

[Subscribe](#)[Past Issues](#)[Translate ▼](#)[View this email in your browser](#)

# The Arkansas United Methodist

## LIVING OUR FAITH

January 7, 2021



## What to Read this Week

---

[Subscribe](#)[Past Issues](#)[Translate ▼](#)

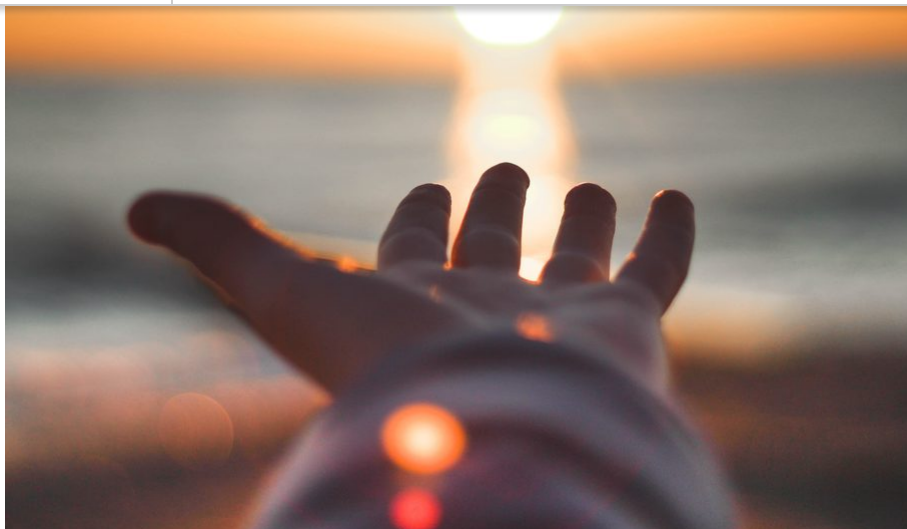
## Statement from Bishop Mueller on Wednesday's Capitol Protests

Bishop Mueller urges everyone to stop and pray for our country, and pray for healing after the chaos that happened at the U.S. Capitol building on Wednesday.

You can read his full statement on our website.

*By Bishop Gary Mueller*

[Read the Letter](#)

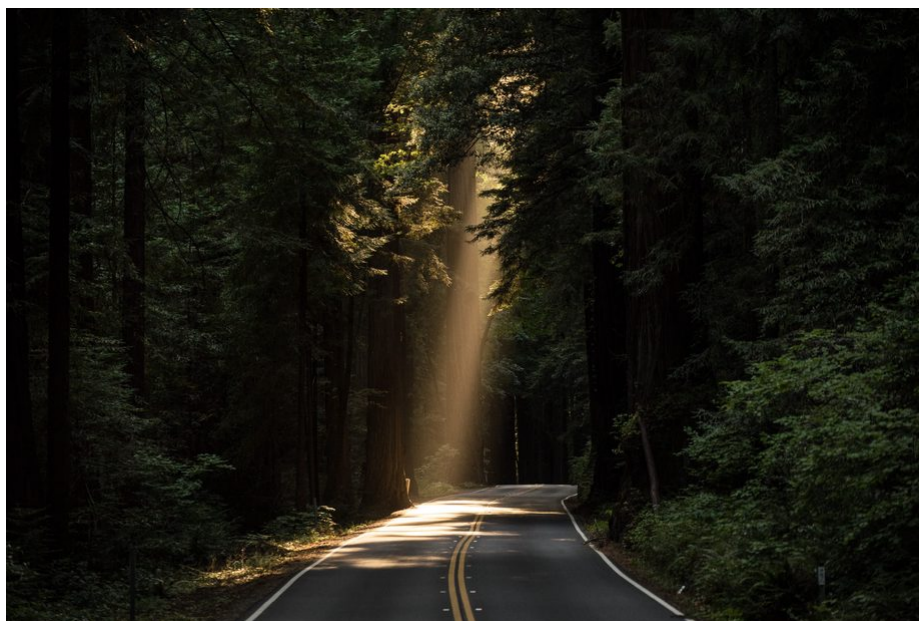


## SAD and CAD

The way so many of you are feeling right now reminds me of something I became acquainted with several years ago: Seasonal Affective Disorder, with its very appropriate acronym of SAD. Recently, it has occurred to me that the pandemic in which we're mired has actually spawned a brand new affective disorder: COVID Affective Disorder, with its acronym of CAD.

*By Bishop Gary Mueller*

[Read More](#)





[Subscribe](#)[Past Issues](#)[Translate ▼](#)

In 2021, for the first time in a while, I set a resolution for myself: I'm going to make a point to be more hopeful, prayerful, and understanding than in years past.

*By Caleb Hennington*

[Read More](#)

## What Does It Mean to Have a Special Needs Ministry?

Is the dream for your congregation to be a faith community that loves each other and takes care of each other? Rev. Stephen Waggoner, Chair of the ARUMC Disability Concerns Committee, explains what it means to have a Special Needs Ministry at your church.

*By Rev. Stephen Waggoner*

[Read More](#)

[Subscribe](#)[Past Issues](#)[Translate ▼](#)

## Mount Eagle Retreat Center Announces Katelyn Hiatt as New Executive Director

The Mount Eagle Board of Directors is pleased to announce Katelyn Hiatt as our new Executive Director to the Mount Eagle Retreat Center. Hiatt, along with her husband and two children, will be moving to Mount Eagle in March.

*By Mount Eagle Retreat Center*

[Read More](#)



## Stoking an Ember into a Flame

[Subscribe](#)[Past Issues](#)[Translate ▼](#)

Learn about Elizabeth Grobmyer's story and how she recovered from addiction and became a program consultant with Arkansas CARES.

*By Kelli Reep*

[Read More](#)

---

The *Arkansas United Methodist: Living Our Faith* is now *The Arkansas United Methodist Newsletter*. If you're looking for older copies of the digital magazines, you can find them at [www.issuu.com/arkansasumc/docs](http://www.issuu.com/arkansasumc/docs).

*Have a story idea? Want to submit an article to be featured online? Contact Caleb Hennington at [caleb.hennington@arumc.org](mailto:caleb.hennington@arumc.org) or call 501-324-8037.*



---

Copyright (C) 2021 Arkansas Conference of the United Methodist Church. All rights reserved.

[Update Preferences](#) | [Unsubscribe](#)

