

# Arkansas Methodist



"SERVING TWO HUNDRED THOUSAND METHODISTS IN ARKANSAS"  
Official Publication of Arkansas Methodism

VOL. LXXI.

LITTLE ROCK, ARKANSAS, JUNE 5, 1952

NO. 23

## International Tensions Increase

PRESS reports out of Moscow state that foreign residents in Moscow feel that relations between the Soviet Union and the major Western Powers have reached the lowest level since the close of World War 2. They feel that this is especially true with regards to the United States.

In Germany, Korea, Indo-China and Japan tensions grow almost by the hour. Despite the fuss and furor, informed sources continue to state that there does not seem to be a likelihood that Russia will start an all-out war in the near future. Usually those assurances are undergirded with a word of caution against becoming too optimistic.

Without question, the Western world is taking a calculated risk in its program of rearmament and the union of its forces. Any other course would seem to court disaster. There is always the possibility that Russia, seeing the growing Western strength, may force the issue before that strength can be fully developed. The next few months are critical months in world history.

## W. M. Stowe Little Rock Conference Preacher

THE Little Rock Conference is especially fortunate in having Dr. William McFerrin Stowe, Oklahoma City, as its Conference Preacher. Dr. Stowe has rendered the Church distinguished service in many fields and is now serving St. Luke's Methodist Church, Oklahoma City, having been appointed there as pastor in June, 1951.

Dr. Stowe is a graduate of Hendrix College, Duke University, (BD) and Boston (PhD). After serving two pastorates in Texas, Dr. Stowe served on the staff of the General Board of Education, 1944-49, working with the Division of Educational Institutions. He was appointed pastor of the First Methodist Church, Stillwater, Oklahoma, in March, 1949, which appointment he served until being reappointed to the Oklahoma City pastorate. Dr. Stowe has taught special courses in the Illiff School of Theology, Denver; Scarritt College, Nashville; Boston University School of Theology; Perkins School of Theology; Graduate School of Religion, University of California; and the Gammon School of Theology, besides contributing numerous articles to religious journals.

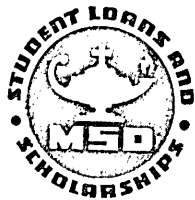
Dr. Stowe is the son of the late Dr. J. J. Stowe who served with great effectiveness in the Little Rock Conference, from 1922, when he was transferred here from the Tennessee Conference, until 1931 when he was transferred back to the same conference. The late Dr. Stowe will be long remembered.

(Continued on page 5)

## Observe Methodist Student Day

ATTENTION of local church leaders should be directed at this time to the annual observance of Methodist Student Day, scheduled in most conference programs for the second Sunday in June. This special day, sponsored by the Division of Educational Institutions of the General Board of Education, points up the church's responsibility in assisting worthy students to receive college training in order that they may more helpfully serve the church. Funds contributed in the Methodist Student Day offering are used to provide scholarships to deserving Methodist youth for use in Methodist colleges.

The record of giving to this fund



by the conferences of the Arkansas-Louisiana Area is certainly nothing to brag about. As a matter of fact the Fund is consistently putting more money back into Hendrix College and Centenary College through scholarships than the three conferences are putting into the Fund. Which is to say that other conferences are helping to pay for the college education of our young people who are attending our colleges on Methodist Student Fund scholarships. We submit that the Arkansas-Louisiana Area has ample resources to at least put as much into this Fund as it gets out of it.

We believe that one of the reasons for the little attention which this matter receives is the date of the observance. Coming as it does in the Annual Conference season, or immediate post conference season, many local churches doubtless find it difficult to focus serious attention on this matter and thus the observance is simply passed by on the other side. We cannot believe that pastors and local church leaders do not realize the value in the church investing in such a scholarship Fund.

We would like to suggest that this day be re-scheduled, if necessary, to provide an opportunity for Methodists in this Area to have this matter presented to them for their consideration. The Church, the college and youth all benefit by this program.

## Hendrix Commencement Marks New Day

LAST Sunday was a great day at Hendrix College. The Commencement Day exercises embodied all of the fine features of that high day at their best. One gratifying feature of the day, that set it apart from all former Commencement Day exercises, was the fact that the program for the entire day was presented in the new auditorium on the campus for the first time. It was a long-time dream come true. All in attendance must have thrilled with pride as they realized that Hendrix College now has an adequate, attractive auditorium on the campus in which large assemblies can meet.

The baccalaureate sermon, delivered by Dr. Merrimon Cuninggim, dean of Perkins School of Theology at Dallas, Texas and the Commencement address delivered by Dr. Fletcher Nelson, President of Lees-McRae College at Banner Elk, North Carolina, were of the highest order. They were character building, character stabilizing messages that will linger long in the hearts of all present.

Methodism in Arkansas may well be proud of the large graduating class, approaching a hundred in number, that will go out from Hendrix College this year to take their places in helping to build a better world. Rev. Claud D. Nelson of New York received the honorary degree of Doctor of Laws. The honorary degree of Doctor of Divinity was conferred on Dr. Fletcher Nelson, Rev. Arthur Terry, pastor of Asbury Methodist Church, Little Rock and Rev. Fred G. Roebuck, pastor of First Methodist Church, Ft. Smith.

## Write Your Congressman

CONGRESSMAN JOSEPH BRYSON has again introduced a Bill in the House of Representatives which would prohibit all interstate advertising of all alcoholic liquors.

Dry forces have been supporting such a measure for some years now. Several attempts have been made to pass such a Bill in Congress. Each time it has been defeated. However, enough progress has been made each time to encourage its supporters to try again. Perhaps this is the time.

All who are interested in such a measure should write their Congressmen urging them to support the present measure. The Bill is H. R. 2188. Telegrams, letters and petitions should be sent to Hon. Lindley Beckworth, House Office Building, Washington, D. C.

Our nation certainly does need to slow down the high-priced advertising campaign that is made so attractive and mis-leading. If people want liquor as badly as liquor people claim, such an advertising campaign should not be necessary. We do not need to increase the number of users of intoxicating

(Continued on page 5)

# Louisiana Conference In Annual Session

THE 600 members and visitors of the Louisiana Conference which met last week in annual session at the First Methodist Church, Shreveport, enjoyed a four-day session which saw the conclusion of the 1948-52 quadrennium and the beginning of the 1952-56 four year period. Officers of the conference included: Bishop Paul E. Martin, Chairman, Rev. Jack Midyett, Bastrop, Secretary; Rev. George Pierce, Jr., DeRidder and Rev. Ralph Cain, Monroe, Assistant Secretaries; and Rev. J. E. Hearn, Ruston, Conference Statistician. Dr. Guy M. Hicks and Rev. Cleburne Quaid, First Methodist Church pastors, and Dr. J. Henry Bowdon, Shreveport District Superintendent, were host ministers.

One of the early highlights of the busy session was the election of the various conference boards, committees, and commissions for the 1952-56 quadrennium. Officers of these groups include: Board of Education, Chairman, Guy M. Hicks; Vice-Chairman, R. R. Branton, Secretary, James T. Harris, Treasurer, R. H. Nelson; Board of Missions, Chairman, Luman Douglas, Vice-Chairman, J. R. Russell, Secretary, E. J. Barksdale, Treasurer, T. H. Arnold; Hospitals and Homes, Chairman, E. P. Drake, Vice-Chairman, W. A. Baker, Secretary-Treasurer, C. W. Quaid; Commission on World Peace, Chairman, John T. Redmon, Vice-Chairman, A. N. Goldthwait, Secretary, Preston Holley; Committee on Minimum Salary, Chairman, E. L. Tatum, Vice-Chairman, Jack Cook, Secretary, John G. Gieck; Group Insurance, Chairman, Carl Lueg; Committee on Student Centers, Chairman, B. A. Galloway, Vice-Chairman, Charles Chisholm, Secretary, J. J. Caraway; Publishing Committee, Chairman, Virgil D. Morris, Secretary, Henry A. Rickey; Town and Country Commission, Chairman, R. C. Carter, Secretary, Pat Strother; Ministerial Training, Chairman, A. M. Serex, Vice-Chairman, Fred Flurry, Registrar, Robert Crichlow, Treasurer, George Harbuck; Committee on Christian Vocations, Chairman, Don Wineinger, Secretary, James E. Christie; Council on World Service and Finance, Chairman, W. E. Trice, Vice-Chairman, J. C. Love, Secretary, W. A. Bengston; Committee on Conference Claimants, Chairman, S. A. Seegers, Vice-Chairman, D. E. Hays, Secretary, W. D. Milton, Treasurer, Judge Robert J. O'Neal; Committee on Conference Relations, Chairman, Don Risinger, Secretary, Don Wineinger; Board of Managers Pastor's School, Chair-

man, Douglas McGuire, Dean, Earl Emmerich.

In the opening session on Tuesday afternoon, Rev. W. H. Giles, Monroe District Superintendent, delivered the annual commemoration sermon in memory of ministers and their wives who had died during the past year. Those commemorated included: D. B. Rawlins, R. H. Bamburg, G. J. L. Brown, W. F. Henderson, Jr., J. C. Sensintaffar, T. J. Holladay, C. M. Hughes, James T. McVey, H. D. Marlin, Dr. Anna Ruth Nuttall, Mrs. J. W. Booth, Mrs. J. H. Lewis, Mrs. R. H. Staples, Mrs. Jack Midyett, and Mrs. Hoyt M. Dobbs.

Two ministers whose services totaled approximately eighty-seven years assumed the retired relationship: Dr. R. H. Harper, pastor for the past five years at Opelousas, and Rev. L. P. Moreland, pastor for the past two years at Bienville.

Fourteen ministers were received on trial into the conference. These included Nollau Harwood, Carlos A. Welch, Sherman Lee Beird, Manasseh Curtis Cady, Donald E. Barnes, Robert E. Taylor, Claud Edward Henkel, Thomas Burton Boone, Jr., James Woodrow Hearne, L. M. Sawyer, Lawrence Gilbert, Bobby Lee Lawton, Glen Allen Smith, and Stephen Wendt.

Five ministers were admitted into Full Connection; Robert William Bengston, Angus Lee Caruth, Samuel Burl Dampier, William Vincent Serman, and James Robert Woodward.

On Thursday evening after Dr. Warren Johnston, pastor of the First Methodist Church, Baton

Rouge, delivered the ordination sermon, Bishop Martin ordained the following men as Deacons: Robert William Bengston, Cloward K. Brooks, Angus Lee Caruth, Brady B. Foreman, Raymond Crofoot, Samuel Burl Dampier, M. L. Davis, D. R. Deen, Donald E. Barnes, George P. Goodwin, William Thomas Hall, Isaac A. Patton, James M. Poole, Glendon P. Messer, Daniel W. Tohline, James Philip Woodland, Carlos A. Welch, L. W. Taylor, and Oliver Wendell Barbaree.

Following the ordination of the deacons, Bishop Martin, assisted by the district superintendents, and other invited elders, ordained the following ministers as elders: Hugh Leon Baker, Jr., Lael S. Jones, Collins D. Pinkard, William V. Sirman, Leo Westbrook, Oliver W. Barbaree, H. D. Fisher, R. L. Bordelon, and Nollau Harwood.

Featured in the conference program were devotional messages and sermons given by Louisiana Conference ministers who last summer attended the Methodist Ecumenical Conference at Oxford, England. These messages were based on the travel experiences of these ministers. Included among those delivering messages were: Dr. B. C. Taylor, "The Ways of Men and the Way of God," Rev. Virgil Morris, "Methodism Across Europe," Rev. Carl Lueg, "Rome, A City of Contrast," Dr. W. E. Trice, "Methodism and Christian Education," and Rev. Sam Nader, "The New Jerusalem."

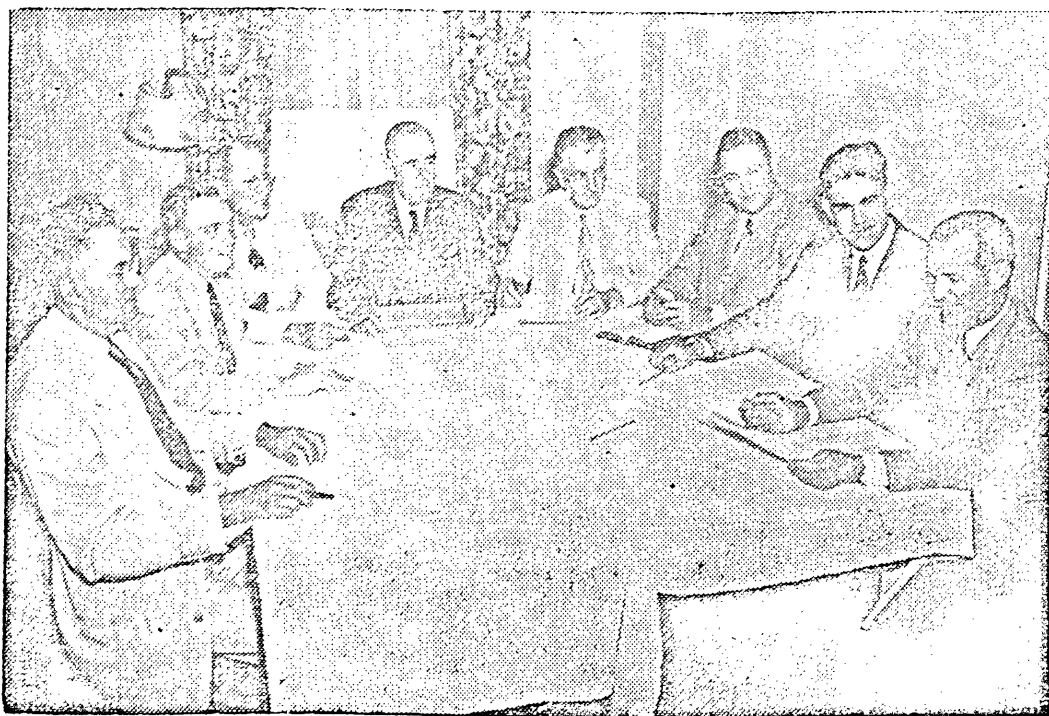
On Tuesday evening Dr. W. Ferrell Pledger, for thirteen years a missionary and leader in India,

addressed the conference with special reference to Methodist missions in India. On Wednesday evening, Dr. Merrimon Cunnigim Dean, Perkins School of Theology, addressed the conference. On Thursday evening prior to the ordination service, Bishop Martin installed the officers of the Louisiana Conference Methodist Youth Fellowship organization.

The Conference adopted on Friday morning the recommendations of the Conference Council on World Service and Finance, which provided for the acceptance on an annual conference level the 35% increase of the World Service apportionment. The Conference benevolent program was expanded to include an annual apportionment for *The Louisiana Methodist*, conference organ, and an additional apportionment for a new Episcopal Area agency, Methodist Information. The World Service Budget and the Conference Benevolent budget, taken together, represents an approximate increase of 23% over the 1948-52 budget. The Conference had voted in an earlier session in the week to join with the Little Rock and North Arkansas Conferences of Arkansas-Louisiana Area to set up a Department of Public Relations (Methodist Information), which will have as its major function the gathering and the dissemination of church news. It is expected that the *Arkansas Methodist* and *The Louisiana Methodist* will have direction of this program in the Area.

Other financial matters con-

(Continued on page 5)



LOUISIANA CONFERENCE CABINET, left to right: Rev. W. H. Giles, Monroe District, Rev. G. W. Pomeroy, Ruston District, Rev. Jolly B. Harper, Alexandria District, Bishop Martin, Dr. J. Henry Bowdon, Shreveport District, Dr. H. L. Johns, New Orleans District, Rev. Edward W. Harris, Baton Rouge District, Rev. Karl Tookey, Lake Charles District.

# CURRENT RELIGIOUS NEWS BRIEFS

## Selected From Religious News Service

### Religious Films Get 'Oscars'

Religious movies got their own "Oscars" for the first time in a ceremony in Philadelphia sponsored by Christian Youth Cinema Inc., a non-profit film distributing agency that circulates 16-mm. movies to Protestant churches throughout the country. Church leaders engaged in film production attended a dinner in which the principal honor, for the best Christian characterization in 1951, was awarded to Colleen Townsend for her work in a religious movie, "Great Discovery." Miss Townsend, who two years ago gave up Hollywood stardom to become a missionary, could not be present. In her absence the award was accepted by Mrs. Barbara Crawford of the Hollywood Presbyterian church, of which Miss Townsend's father-in-law, the Rev. Louis Evans, is pastor.

### Bonneville Dam Gets Plaque With Bible Verse

"The Lord on high is mightier than the noise of many waters; the strength of the hills is His also." This beautiful verse from the book of Psalms, engraved in bronze, now stands embedded in an ancient petrified log in front of the visitors' center here at Bonneville dam, on the Columbia river. The bronze plaque bearing the Bible verse was dedicated at ceremonies sponsored by the Oregon Council of Churches. Dr. Ernest Jaqua, president of the council, expressed the purpose of the plaque: "We hope this Bible text, located here in full view of Bonneville dam and the eternal hills, will symbolize the harmony of scientific achievement and spiritual life."

### Nazarene Church Reports Record Contributions

Members of the Church of the Nazarene gave an all-time high of \$7,580,000 for its general budget and mission specials in the 1948-52 quadrennium ending April 30, it was announced at denominational headquarters in Kansas City, Mo. Of this amount \$5,200,000 was for foreign missions. The \$7,580,000 represents an increase of 60 per cent over the amount given in the previous quadrennium of 1944-48. It also is more than six times the amount reported 20 years ago. In 1951, per capital giving in the Church of the Nazarene was \$111.76. This compares with \$33.63 per capital 20 years ago.

### North India Church To Establish First Foreign Mission

The first missionary to be sent overseas by the United Church of North India will leave for East Africa this summer, and will set up headquarters at Nairobi in

Kenya. United Church headquarters at Kharar, in the Punjab, reported that the Rev. Piyare Lal Khazan Singh would work at Nairobi in association with the Church of Scotland's St. Andrew's kirk there. (The Church of North India was formed by a merger of Congregational and Presbyterian church in northern India.) Mr. Khazan Singh's mission, it was said, is not restricted but will aim principally at reaching the 160,000 Indians and Pakistanis in the three colonial territories of Kenya, Uganda and Tanganyika.

### Says Prisoners Need Radical Religious Experience

Trenton, N. J. — New Jersey's recent prison riots demonstrate that the "radically bad men who are inmates of our penal institutions can become radically good men only when they have a radical religious experience." So declared Dr. John B. Oman, minister of First Methodist church here, who was chaplain of Trenton's State Prison for five years. "After all, the only plan of rehabilitation that really works is that of Christ through whom life can be made pure and whole again," he said. "Come, follow me," is the call that come from Christ. And to the man in prison that call can be the key that unlocks the barred doors and sends him on his way to a wholesome, happy life."

### Baptists To Form 'Fun Clubs' In Churches

"Fun Clubs" will be formed in Baptist churches over the country next fall as the result of a successful experiment in Lansing, Mich., in a new recreational program for children. The program was developed by the Juvenile Protection Committee of the American Home Mission Society as a means of aiding churches and communities in dealing with juvenile delinquency. The Rev. Edward D. Rapp is director of the committee's juvenile program.

### Ministers And Clean-Up Week

Local ministers at Kilgore, Tex. got the annual "Clean-Up, Paint-Up and Fix-Up Week" off to a flying start. They stressed the theme, "Cleanliness is Next to Godliness" in their sermons as part of Church Cooperation Day which opened the week.

### Ministers Fly Own Planes To Civil Air Patrol Chaplains Conference

More than 250 flying chaplains who serve the Civil Air Patrol attended the largest CAP national chaplains conference ever held at Washington, D. C. Some 50 of the ministers, priests, and rabbis flew their own planes in. Most

## FROM PRECIPICE TO PRECIPICE

By Charles A. Wells



of the others arrived by "thumbing" rides on Air Force planes. Chaplains attended the three-day session at Bolling Air Force Base here from points as far distant as Alaska, Hawaii, and the Virgin Islands.

### Communion Table Hewn From Carpenter's Bench

Wellington, N. Z. — A novel Communion table, hewn from a carpenter's bench, will soon be placed in the sanctuary of St. Luke's Methodist church in the suburb of Pukerua Bay, New Zealand.

Church officials said that the table, made of plain dark wood and showing the bench vise at one end, will be appropriate not only because Christ was a carpenter but also because the church was largely built by the voluntary labor of its members.

### Charge New Attack On Bogota Protestant Chapel

Three persons were injured during worship services in a Protestant chapel at Bogota, Columbia when the building was stoned by a crowd of demonstrators led by a Roman Catholic priest, according to the Confederation of Protestant Churches in Columbia. Pastor Luis Quiroga, general secretary of the Confederation, said that a woman teacher and two other persons were struck by the stones and the chapel's window panes were smashed. He said that the priest led the demonstrators into the chapel and ordered them to haul its benches and books into the

street and burn them. Meanwhile, dispatches from Armenia, 100 miles west of Bogota, reported that a woman and a child had been shot in a similar attack on a Protestant church there.

### Senator Asks New Diplomacy Based On Moral Issues

Spiritual forces "above and beyond the line of armed defenses" and a "new diplomacy based on moral issues" were urged by U. S. Senator Ralph E. Flanders (R.-Vt.) in an address to the International Council for Christian Leadership which met at Noordwijk-ann-Zee, near The Hague. "If we can do this," he said, "we can attract universal support by mutual interest instead of driving it to us by negative means."

### Methodist Churches Plan United Fund Drive

Thirty-five Columbus area Methodist churches will conduct a \$1,500,000 united fund drive which spokesmen said will be watched nationally with a great deal of interest. The campaign is to raise funds to support their programs. It will be the first time that a united canvass has been held by the denomination. Previously, local Methodist congregations held individual canvasses to obtain funds to support their own church. They also conducted drives throughout the year to aid Methodist-supported institutions. The Rev. John Dickhaut, minister of Trinity Methodist church and chairman of the united drive, said it is hoped that this year's program would eliminate any special drives.

## NEWS AND NOTES ABOUT FACTS AND FOLKS

**B**ORN to Mr. and Mrs. Melvin H. Wester of Longview, Texas, on May 24, a daughter, Deborah Ann. Mrs. Wester is the daughter of Rev. and Mrs. J. M. Harrison of Keiser.

**R**EV. ROBERT O. BECK, pastor of the Methodist Church of Gurdon, has been elected president of the newly organized Ministerial Alliance of Gurdon.

**R**EV. G. A. McKELVEY, pastor of the Methodist Church of Monette was elected president of the Monette Lion's Club, at its recent meeting.

**R**EV. J. HARMON HOLT, pastor of Griffin Memorial Church, Paragould, preached the commencement sermon for the Senior Class of the Paragould High School on Sunday evening, May 18.

**A** VACATION CHURCH SCHOOL held at the First Methodist Church, Magnolia, from May 26 to June 6, with Mrs. Archie Monroe as supervisor. Four courses will be offered. Rev. Elmer L. Thomas is pastor.

**D**R. AND MRS. C. M. REVES of Conway were presented with andirons and a fireplace set at a meeting in Conway on Monday, May 26, of the preachers of the Conway District.

**B**ILL MARTIN, son of Dr. and Mrs. A. W. Martin of Dallas, and ministerial student at Southern Methodist University, is serving as associate pastor at the First Methodist Church, Jonesboro, during the summer. Dr. Martin is a former pastor of First Church.

**M**ISS ANN WILFORD, daughter of Rev. and Mrs. S. B. Wilford of Batesville and student at Hendrix College, has accepted a position as youth director for the First Methodist Church, West Memphis, for the summer. Rev. Alfred A. Knox is pastor.

**A** RRCEPTION, honoring Mrs. Paul E. Martin and visitors, will be given at the home of Mrs. W. L. Horner, Blytheville, from 3:30 to 5:30 p. m. on Saturday, June 14, during the session of the North Arkansas Conference.

**T**HE MEN'S CLUB of the First Methodist Church, Fort Smith, met on Wednesday, May 28, with Dr. Henry Goodloe, district superintendent of the Fort Smith District, as guest speaker. Dr. Goodloe reported on the recent General Conference.

**C**HAPLAIN ALVIN C. MURRAY, who has just returned from active duty as chaplain in the Army and serving in Korea, will be speaker at the morning service at the Methodist Church in Atkins on Sunday, June 8. Captain Murray will tell of experiences in the Army and observations of Korea.

**D**R. JOHN R. ROGERS, head of the Department of Elementary Education, Southern State College, will be the speaker at the Student Day service at the First Methodist Church, Magnolia, on Sunday, June 8. Dr. Rogers will speak on "Date Line Tomorrow."

**D**R. D. L. DYKES, JR., pastor of Central Methodist Church, Fayetteville, is the inspirational speaker for the Youth Assembly of the North Arkansas Conference, now in

session at Hendrix College. The meeting began on Wednesday, June 4, and will run through Saturday, June 7.

**T**HE SPADRA METHODIST CHURCH observed Home-coming Day on Sunday, June 1, with Governor Sid McMath as the featured speaker. This was the twentieth annual home-coming. A basket dinner was served at noon. Rev. Paul Kelley is the pastor.

**D**R. WARREN JOHNSTON, pastor of the First Methodist Church, Baton Rouge, delivered the Ordination Sermon at the session of the Louisiana Annual Conference last week. Dr. Johnston is a former member of the North Arkansas and Little Rock Conference.

**O**PEN HOUSE was held on Sunday afternoon, June 1 by Dr. and Mrs. Ralph Hon of Memphis, and Miss Helen Hon of St. Louis, at the home of her parents, Mr. and Mrs. Gus Hon in Jonesboro, in honor of their fiftieth wedding anniversary. Mr. and Mrs. Hon are members of the First Methodist Church of Jonesboro.

**R**EV. ALF EASON, pastor of the Marion Methodist Church, preached the sermon for the graduating class of the Marion High School on Sunday, May 18. Dr. N. C. McPherson, pastor of St. John's Methodist Church, Memphis, Tenn., was the speaker at graduation exercises on Thursday evening, May 22.

**T**HE BERRYVILLE METHODIST CHURCH has a visitation program each Sunday evening with workers meeting at the church for a brief devotional service at 7:30 p. m., after which visits are made in the homes of new members and newcomers in the community. Refreshments are later served in the basement of the church to the workers. Rev. Edwin B. Dodson is pastor.

**J**OE PIERCE, lay leader of the Searcy District, spoke to the Methodist Men of the First Methodist Church, Conway, at the meeting at the church on Wednesday, May 21. Mr. Pierce spoke on the recent General Conference to which he was a lay delegate. Mr. Pierce was accompanied to Conway by Rev. Ralph Hillis, pastor of the First Methodist Church, Searcy.

**J**AMES LINAM, son of Rev. J. E. Linam, pastor of the Swifton-Alica-Charge, was recommended for license to preach at the last Quarterly Conference and later was granted license by the Ad-interim Committee, James is the second son of the family to enter the ministry. Joe, the oldest son, has finished his freshman year at Arkansas College, Batesville, having been licensed last year. He hopes to enter Hendrix this fall with James who was graduated this month from Swifton High School.

**T**HE SIXTY-FIFTH ANNIVERSARY of Grand Avenue Methodist Church, Hot Springs, was celebrated with special services at the church on Sunday, June 1. Former pastors brought special messages during the morning and evening services. Dr. Leland Clegg, district superintendent of the Oklahoma City District, spoke at the morning hour and Rev. J. D. Baker, pastor of Shore-

wood Hills Methodist Church, Hot Springs, brought the message at the evening hour. Rev. C. Ray Hozendorf is the present pastor.

**H**ONORARY DOCTOR OF DIVINITY DEGREES were conferred upon Rev. Arthur Terry, pastor of Asbury Church, Little Rock, Rev. Fred G. Roebuck, pastor of the First Methodist Church, Fort Smith, and Rev. Fletcher Nelson, president of Lees-McRae College, Banner Elk, N. C., at the commencement exercises at Hendrix College on Sunday, June 1. An honorary doctor of laws degree was conferred upon Claude D. Nelson, for many years prominent in Y.M.C.A. work in both Europe and America. He is now connected with the National Council of Churches in New York. Mr. Nelson's home town is Conway.

**M**ISS MARJORIE BOWDEN, daughter of Mr. and Mrs. Paul Bowden of Swifton, and graduate of Arkansas State Teachers College, May 18, with a Home Economics major, has been chosen by the Mission Board of the Methodist Church as a missionary (J-3) to India. She will leave September 1. Miss Bowden was Founders' Day queen at the college this year. She was graduated from the Swifton High School and has been active in all phases of church work. During her college career she was a member of the Student Christian Association and was a delegate to the National Conference of that organization in Tulsa, Oklahoma, last year. She has been program chairman of the Wesley Foundation at Conway and sang in the choir of the First Methodist Church. She will go to Hartford, Conn., the last of June for a period of training.

### REV. JOHN HEFLEY TO LOUISIANA

Bishop Martin announced at the conclusion of the Louisiana Annual Conference last week in Shreveport that Rev. John Hefley, pastor for the past 7 years at the First Methodist Church, Arkadelphia, was being transferred to the Louisiana Conference and appointed to the University Methodist Church, Lake Charles. He announced at the same time that Rev. W. O. Byrd, who has been the pastor of the Lake Charles Church, is being transferred to the Little Rock Conference.

## Arkansas Methodist

An Official Publication of  
The Arkansas-Louisiana Episcopal Area

PUBLISHED EVERY THURSDAY  
Except the Weeks of July 4 and December 25

SUBSCRIPTION PRICE, \$1.50 PER ANNUM  
Retired Ministers and Wives of Deceased Ministers  
of the Little Rock and North Arkansas Conference  
Complimentary

Office of Publication, 1136-1137 Donaghey Building  
LITTLE ROCK, ARKANSAS

E. T. WAYLAND Editors and Business Mgrs.  
EWING T. WAYLAND Assistant to Editors  
ANNIE WINBURNE

CONTRIBUTING EDITORS: H. O. Bolin, Mrs. Ewing  
T. Wayland, Roy I. Bagley, Forney Hutchinson.

OWNED, MANAGED AND PUBLISHED BY  
THE METHODIST CHURCHES OF  
ARKANSAS AND LOUISIANA  
COMMISSIONERS:

Little Rock Conference—J. S. M. Cannon, Charles W. Richards, O. C. Landers, Fred W. Schwendemann, Arthur Terry, Aubrey G. Walton, Burney Wilson.  
Louisiana Conference—To be named June, 1952.  
North Arkansas Conference—John Bayliss, W. Glenn Bruner, J. G. Moore, Joe Pierce, I. L. Claud, R. J. Rice, J. William Watson.

Entered as second-class matter, January 31, 1903, at the Post Office at Little Rock, Ark., under the Act of Congress of March 3, 1879.

When asking for change of address, please include charge key number, former address, new address and name of pastor.

Articles other than editorials do not necessarily reflect the opinions of the editors of the Arkansas Methodist.

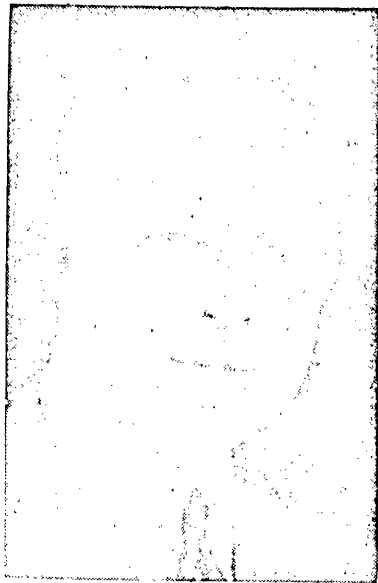
ARKANSAS METHODIST



## SPEAKER AT NORTH ARKANSAS CONFERENCE

**D**R. ROY L. SMITH, one of the two Publishing Agents of The Methodist Church and as such one of the heads of The Methodist Publishing House, will address the North Arkansas Conference of The Methodist Church on the evening of June 14 in the First Methodist Church, Blytheville, Arkansas. His topic will be "The Interpreter's Bible", the twelve-volume Bible commentary being published by Abingdon-Cokesbury Press, publishing division of The Methodist Publishing House.

The first comprehensive commentary in 130 years, "The Interpreter's Bible" will, it is predicted, have far-reaching effects on the preaching of the gospel throughout the English-speaking world by the time the last volume comes out in 1957. One volume—Volume VII—has already been published, while Volume VIII, continuing the New Testament exposition, is scheduled to be published April 21 of this year. When the final volume is published the whole venture will represent the efforts of scores of writers and editors from fourteen Protestant denominations, and thirteen years and approximately one million dollars will have been spent on it.



DR. ROY L. SMITH

Dr. Smith, one of the best known of Methodist leaders and one of the denomination's most popular speakers, is well-known as an author of books and newspaper columns. Prior to his election he was editor of "The Christian Advocate," official newspaper magazine of The Methodist Church.

## HE WANTS TO BE A CHRISTIAN PHARMACIST

A Japanese boy who lost both legs during World War II when American planes bombed his village is now a senior in the Kyoto College of Pharmacy. Mr. Shuji Fukumura's college expenses have been financed by American Methodists — particularly by the Methodist Youth Fellowship of the Philadelphia Conference.

Mr. Fukumura gets around in a hand-operated tricycle which was furnished by officials of his prefecture.

Unless additional funds come soon, Mr. Fukumura will not be able to continue his education. A Christian, Mr. Fukumura says of his donors: "I would like to repay them by devoting myself to helping create a better world, by leading others to the bright way of living."

Funds designated for Mr. Fukumura's scholarship may be sent to the Treasurer, Division of Foreign Missions, Board of Missions and Church Extension of the Methodist Church, 150 Fifth Avenue, New York 11, N. Y.

## W. M. STOWE LITTLE ROCK CONFERENCE PREACHER

(Continued from page 1)

by those who knew him for the immediate place of leadership given him in conference affairs. His son will be heard with much appreciation because of the wide experience which has been his and the place which he has made for himself in the affairs of the church.

Dr. Stowe will preach on Wednesday, Thursday, and Friday nights and on Thursday and Friday afternoons.

## WRITE YOUR CONGRESSMAN

(Continued from page 1)

liquors. This effort to limit the advertising of alcoholic liquors deserves the full support of all soberminded people throughout the nation.

## LOUISIANA CONFERENCE IN ANNUAL SESSION

(Continued from page 2)

considered by the conference included plans for the raising of \$50,000 annually for Centenary College. Local churches of the conference are being asked to contribute an amount equal to fifty cents for each member. Wesley Foundation work, which is located on the campuses of state supported schools, will receive additional financial assistance through a program which calls for the contribution of fifteen cents for each member in each local church.

During the Thursday morning session the conference gave consideration to the reports by three of the General Conference delegates who attended the recent General Conference sessions at San Francisco. Rev. Virgil D. Morris discussed "Democracy in the Methodist Church," Judge Vincent M. Mouser, "The Survey Commission and The Committee of Six," Dr. Guy M. Hicks, "Continuing the Advance." To conclude this feature of the program, Bishop Martin spoke concerning the program for the Arkansas-Louisiana Area in the 1952-56 quadrennium.

The Conference considered and adopted a new program of Insurance for ministers. The new policy features a combination life insurance and hospitalization policy which will be issued by the Travelers Insurance Company.

Included in the Statistician's Report were figures which revealed that during the past year 3,863 were received from Preparatory memberships and Profession of Faith, 1333 members were received from other denominations, 7554 were received by transfer. The Conference now has a total membership of 112,464, or a net gain of 4197 members. The statistician also reported 66,354 church school members, a net gain of 120.

444 preaching places were reported. There has been a net

## NEW WORK CAMPS FOR COLLEGE STUDENTS

Two new work camps for college students have been added to the list of summer service projects of the Methodist Student Movement, the Rev. R. C. Singleton, secretary for Student work, Methodist Board of Missions, says.

Methodist students will live and work among the Cherokee Indians and other residents of the Cookson Hills of eastern Oklahoma. Sponsored by Methodist youth and the Oklahoma Indian Mission of the Methodist Board of Missions, the camp will be "an experience of work, worship, study and fellowship with Indians in a rural situation." The new work camp near Minot, North Dakota is a six-weeks' session dealing with rural problems as the church faces them in the Northwest.

The Rio Grande Work Camp on the Mexican border at Pharr, Texas, a camp in the mountains of western Kentucky, and the New York City work camp, offer other opportunities to college students. The Mexico Work Camp is the only camp which restricts membership to males. It is for seven weeks instead of the usual six.

Requirements vary from place to place. In all camps Christian young people of college age and differing racial and geographical backgrounds live and work together. The Rio Grande Camp specifies skill in carpentry and experience with children in vacation church schools as desirable qualifications.

Applications and requests for information should be sent to the Rev. R. C. Singleton, Methodist Board of Missions, 150 Fifth Avenue, New York 11, N. Y.

gain in the estimated value of church buildings, equipment and land, of \$1,924,627 and \$124,497 in estimated value of parsonages, furniture and land.

The meeting place of next year's annual conference session will be announced at a later date.

## SPENCER AND TOWER TO HEAD RADIO AND FILM COMMISSION

The Rev. Harry C. Spencer of New York was elected executive secretary of the Radio and Film Commission of The Methodist Church at a special meeting of the commission held in Chicago, May 27 at the call of the chairman, Bishop Donald H. Tippet.

To serve in close relationship to Mr. Spencer, the Rev. Howard Tower of Nashville was made associate secretary and director of Program and Production.

These elections become effective June 1 when the commission, by vote of the recent General Conference, comes under the support of World Service. A little less than two cents of each World Service dollar (1.84%) is to be earmarked for Methodism's general program of radio, television and films.

The commission was created by order of the 1948 General Conference.

## RELIEF WELCOMED IN KOREA

"Methodist leaders in Korea are rejoicing over the fact that relief packages have begun to arrive through the Korean postoffice. The need is very great and they are hoping that this flow of relief will continue," reports Methodist Missionary Charles A. Sauer.

Packages may be addressed to:

**Methodist Mission**

**P. O. Box 112, Pusan, Korea; or**

**Methodist Mission,**

**34 Chung Dong, Seoul, Korea**

All kinds of clothing — men's suits, shoes, women's garments, children's clothing, clothing for babies are needed, as well as blankets, quilts, comforters. The one thing not wanted is women's high heel shoes. It is not advisable to send food packages, as it is much cheaper to purchase local products. Vitamins or "multi-purpose food" are very acceptable.

# North Arkansas Conference Program

FIRST METHODIST CHURCH, BLYTHEVILLE, JUNE 11-15, 1952

WEDNESDAY, JUNE 11

## Morning

- 9:00 Board, Commission and Committee Meetings as announced
- 10:30 Meeting of The Town and Country Commission

## Afternoon and Evening

- 1:30 Annual Conference convenes for organization and roll call
- 1:45 Report of Planning Committee
- 1:50 Nominations by Cabinet
- 2:00 Greetings from Host Church
- 2:15 Report No. 1 Board of Missions and Church Extension
- 3:00 The Annual Service of Commemoration and The Sacrament of the Lord's Supper. Sermon by Rev. John A. Womack
- 4:00 Adjournment
- 4:15 Meeting of Boards, Commissions, and Committees
- 5:45 Training Council Dinner
- 7:30 Worship Service. Sermon by Bishop J. Waskom Pickett, Presiding Bishop of the Delhi (India) Area

THURSDAY, JUNE 12

## Morning

- 8:30 Devotional Service, Dr. Ira A. Brumley
- 9:00 Report of the District Superintendents
- 9:20 Report of the Board of Conference Claimants
- 9:45 Report of the Town and Country Commission
- 10:30 Report of the Committee on Courtesies
- 10:35 Report of the Board of Education
- 10:50 Report of the Board of Evangelism
- 11:20 Report of the Board of Christian Literature and THE ARKANSAS METHODIST
- 11:40 Report of the Special Committee on Pensions
- 12:00 noon Report of the Committee on World Peace

## Afternoon and Evening

- 12:30 Adjournment
- 12:45 University Luncheon
- 12:45 Board of Conference Claimants Luncheon
- 2:00 Conference Advisory Board For Rural Work
- 4:00 Worship Service, Bishop J. Waskom Pickett, Conference Preacher
- 5:30 Town and Country Commission and Methodist Rural Fellowship Dinner
- 7:30 Worship Service, Sermon by Bishop J. Waskom Pickett

FRIDAY, JUNE 13

## Morning

- 8:30 Devotional Service, Rev. R. E. L. Bearden
- 9:00 Report of the Committee on Journal
- 9:05 Report of the Board of Ministerial Training
- 9:35 Report of the Board of Hospitals and Homes
- 10:00 Report of the Board of Lay Activities
- 10:35 Report of the Committee on Courtesies
- 10:40 Report of the Committee on Conference Relations
- 10:50 Report of the Committee on Group Insurance
- 11:00 "FACING THE NEW QUADRENNIUM" Hour
- 12:00 noon Report No. 2 the Board of Education

## Afternoon and Evening

- 12:30 Adjournment
- 12:45 Board of Lay Activities Luncheon

PAGE SIX



Blytheville First Methodist Church has a new sanctuary. Formally opened for worship on Sunday, May 18, these pictures were made at the beginning and after the second service of worship. Two services were held to accommodate the one thousand persons present.

L to R, top: Processional of choir and ministers about to enter sanctuary. View of church showing tower.

L to R, lower: Rev. Roy I. Bagley, pastor, and Rev. H. O. Bolin, Benton pastor, and uncle of Brother Bagley, who assisted in the second service. Rev. E. B. Williams, Jonesboro District Superintendent, assisted in the first service. Second view shows crowd leaving following conclusion of service.

- 2:15 Report of Mt. Sequoyah
- 2:30 Report No. 2 of the Board of Missions
- 3:00 Report No. 2 of the Board of Evangelism
- 3:15 Report of the Board of Temperance
- 3:45 Adjournment
- 4:00 Worship Service, Sermon by Rev. Alvin Murray
- 5:30 Hendrix College Dinner
- 7:30 The Service of Ordination. Sermon by Rev. Cecil R. Culver

SATURDAY, JUNE 14

## Morning

- 8:30 Devotional Service, Rev. Ewing T. Wayland
- 9:00 Report of the Committee on Journal
- 9:05 Report of the Conference Statistician
- 9:15 Report of the Conference Treasurer
- 9:25 Report of the Commission on World Service and Finance
- 10:00 Report of the Committee on Accepted Supplies
- 10:10 Report of the Arkansas Historical Commission
- 10:20 Report of the Committee on the American Bible Society
- 10:30 Report of the Committee on District Conference Journals
- 10:35 Selection of the meeting place for the 1953 Annual Conference session
- 11:00 Adjournment

## Evening

- 7:30 Address by Dr. Roy L. Smith

SUNDAY, JUNE 15

## Morning

- 10:45 Morning Worship Service, Sermon by Bishop Paul E. Martin
- 12:00 noon Concluding business of the Conference and Reading of the appointments.

ARKANSAS METHODIST

# Cooperating In Conference Entertainment

## YARBRO CHURCH

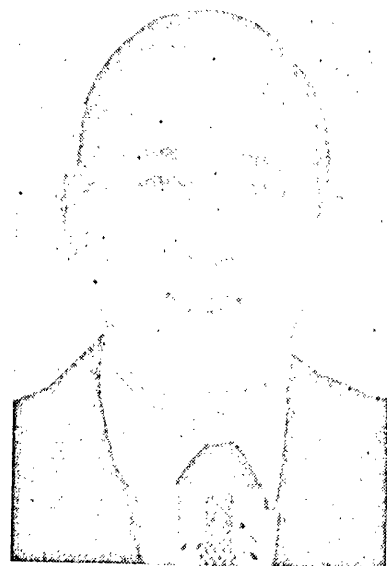
The people of the Yarbro community began worshipping in a log house just east of where the Yarbro school now stands. This was about the year 1887. In 1890 a frame building, which served as a church and a school, was constructed on the site of our present church, the ground being donated by Dr. B. A. Bugg. Levi Bunch, Pleas Yarbro, and J. M. Bunch were responsible for the construction of this building. John Sisk was Sunday School superintendent.

Through the efforts of Levi Bunch, J. M. Bunch, Bob Graves, John Sisk, B. B. Akin, and H. A. Stickman, another church building was erected in 1905. John Sisk continued as Sunday School Superintendent. At this time the Yarbro Church had one of the best choirs in the county. Bob Graves was director. The choir of this church won a banner year after year for being the best choir in Mississippi County.

In 1939 plans were formulated during the pastorate of Reverend A. W. Harris, for the building of a new church. Mr. Dan Ross, as well as all of the members of the church, helped. Rev. Mr. Harris in securing funds for building the church as well as actually working on the church.

## PROMISED LAND CHURCH

For many years the Promised Land Community worshiped in the school house which adjoins the present building. At a 4th of July picnic in 1915, when Reverend Eli Craig was pastor, a movement was started for the erection of a church. That fall the Harvest Supper came into being in this area when the in-



REV. FRANK M. STAGE, JR.

terested community used this method to help raise funds. Under the building committee, composed of Luther Gaines, Wylie McGaughey, and D. G. Moore, the building was planned and constructed by Simon Smotherman. The entire community assisted in its construction by giving of their labor. This church has been in continuous use since that time and is on the charge with Yarbro.

## LAKE STREET METHODIST CHURCH

(Continued from page 9)

in 1950. During the two years of his pastorate the sanctuary has been remodeled with new choir, altar rail and pulpit furniture. \$2,500 has been paid on indebtedness. Twenty-eight members have been added to the church and Sunday School enrollment has increased from 156 to 182. Six hundred dollars has been spent on redecorating the parsonage.

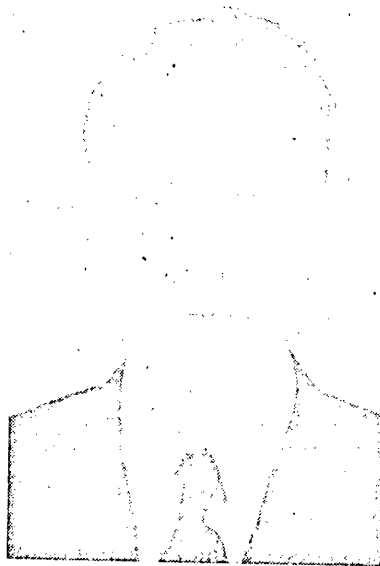
## WESLEY MEMORIAL

The "Wesley Memorial" Methodist Church was organized in August, 1949 and named in honor of John Wesley, founder of Methodism.

The building for the new church was moved to a site on Howard and Marguerite streets in the west end of Blytheville from the Lone Oak community. The sixty charter members included the membership of the former Lone Oak church. This was under the leadership of Rev. W. B. Yount as pastor and Rev. E. B. Williams as district superintendent.

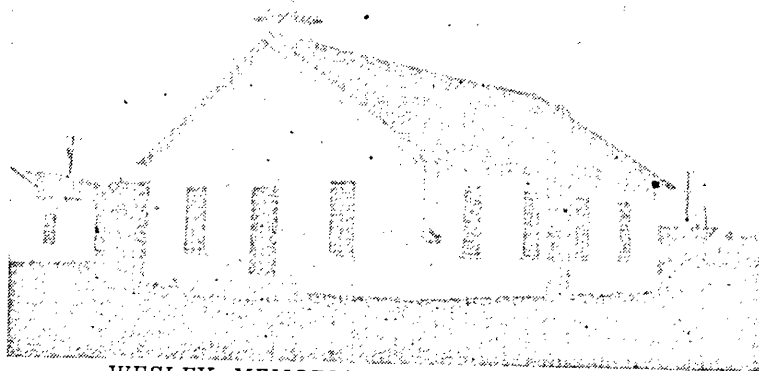
The favorable site of the new church offers wonderful opportunities for expansion and development of Methodism in West Blytheville. The present membership is 112.

The church has enjoyed a good year, all askings of the church are paid in full. The Sunday School has grown and the W.S.C.S. is very active. Under a unified



REV. B. W. STALLCUP

budget system the congregation has increased its giving 50%. —Rev. B. W. Stallcup, pastor



WESLEY MEMORIAL METHODIST CHURCH

VISITORS AND DELEGATES  
WELCOME TO BLYTHEVILLE

AND

**PENNEY'S**

Where Methodists  
Meet

## Guards Jewelry Store

STERLING SILVER

By Reed and Barton,  
Wallace, Hunt  
Towle, Gorham

CHINA

By Castleton, Spade,  
Haviland

GLASSWARE

By Tiffin, Fostoric  
Cambridge

Blytheville

Arkansas

# North Arkansas Annual Conference



FIRST METHODIST CHURCH, Seat of Conference

## FIRST METHODIST CHURCH

Recorded history of Mississippi County begins with the landing of De Soto at Barfield, an Indian village, in 1541. Father James Marquette landed at Barfield in 1673, La Salle in 1682 and Spanish soldiers were in charge of Barfield in 1785. It was a high country until the New Madrid earthquake of 1812.

The first Methodist Church built in Blytheville was Blythe Chapel erected in 1875. This building burned in 1891. The next building was erected on Lake Street where the Sudbury School now stands. In 1909 a brick church was built on the

present site at 7th and Main. This building was burned in 1926. The present building was begun in 1927.

Blytheville received its name as a post office in 1879. It had a population of 200. The Blytheville church had been on the Osceola Circuit since 1846. In 1895 the name was changed to the Blytheville Circuit. Blytheville became a station in 1901. In 1912 the name was changed to First Methodist Church.

The White River Annual Conference held its annual session in Blytheville in the fall of 1911. Pastors since that date have been: 1912-15, A. E. Holloway; 1916-19, R. E. L. Bearden Sr.; 1920, W. T.

Thompson; 1921-23, W. C. Watson; 1924, G. G. Davidson; 1925, J. M. Hughey; 1926-29, Jefferson Sherman; 1930-33, Paul Q. Rorie; 1934-36, W. Vance Womack; 1937-38, H. L. Wade; 1938-41, E. B. Williams; 1941-46, S. B. Wilford; Acting pastor three months 1946, Roy I. Bagley; 1946-49, A. D. Stewart. Since 1949 Roy I. Bagley has been the pastor.

Ground was broken for the new sanctuary on October 30th, 1949. The foundation was poured the following spring. The opening service was held in the new sanctuary on Sunday, May 18th, 1952. During that time a new red brick veneer parsonage was erected on the corner of 9th and Walnut and very tastefully and attractively furnished. The pas-



REV. ROY I. BAGLEY  
Pastor First Church

BISHOP PAUL E. MARTIN  
Presiding Bishop

tor and his family moved in the new parsonage in March 1950. The parsonage and furnishings cost approximately \$27,000. U. S. Branson, a member of the First Methodist Church, whose father was Reverend A. M. Branson, a former pastor, drew the plans and supervised the construction.

The educational building was constructed about 27 years ago during the pastorate of Reverend Jefferson Sherman. Since that time the assembly room has been used as the sanctuary. The total cost of the building program, both the church and the parsonage, approximately \$400,000.00. When the present pastor was appointed in June 1949 there was \$131,910

A Sincere Welcome  
To Our City  
**THE  
NOBLE HOTEL**

Enjoy Extra Conveniences  
Visit Our Coffee Shop

Blytheville

Arkansas

WELCOME  
To  
Ministers and Delegates  
of the  
North Arkansas Conference

**FARMERS BANK  
AND TRUST CO.**

Blytheville

Arkansas

Welcome  
To  
Delegates  
**RUST**

FOOD

Highway 61

Blytheville



# Conference, Blytheville, June 11-15



**BISHOP J. WASKOM PICKETT**

*Conference Preacher*

in the building fund. This fund was started in 1942 under the leadership of Mr. B. A. Lynch and Chairman Harvey Morris. Since that time \$201,765.00 has been collected in cash. There is some remaining indebtedness which is covered by adequate pledges.

The interior of the old educational building has been redecorated by the members of the church without remuneration.

## LAKE STREET METHODIST CHURCH

Rev. Eli Craig was assigned as pastor to the Blytheville Circuit in 1912. He became interested in Sunday School being held in

Blytheville in an old school building by a Mrs. Davis. In June, 1913, Brother Craig and Rev. A. E. Hollaway, then pastor of First Church, held a revival meeting under a brush arbor on Lilly Street. At the close of the meeting they organized a church, later to become Lake Street Church. Through 1913 and 1914 services were held in the home of Iverson Morris at 515 Lake Street.

Lake Street was originally organized as Second Church. Rev. W. L. Oliver was the Presiding Elder, Rev. Eli Craig was pastor. The first members of the Board of Stewards were Iverson Morris and W. J. Webster. Trustees were Charles Nerly, W. W. Crowder and Iverson Morris. Iverson Morris was also the first



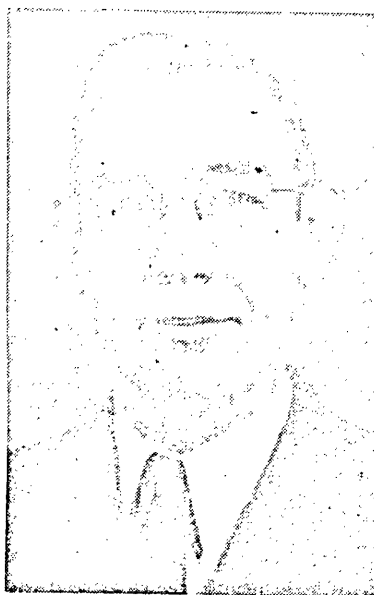
**LAKE STREET**

Sunday School superintendent and served until 1946.

The name of the church was changed to Lake Street in July, 1915 when the first building on the present site was begun. It was not finished until the summer of 1920. The auditorium was remodeled in 1924, and some class rooms added in 1928, while Rev. Bates Sturdy was pastor.

The present building was begun in 1959. Rev. Theron McKisson was pastor. The building was completed sufficiently for use by the time of the meeting of the Annual Conference of 1950. The educational building contained six class rooms, a junior assembly room and a recreation hall. It was valued at \$35,000, with \$8,000 indebtedness.

Rev. George L. McGhehey was assigned to the charge as pastor  
(Continued on page 7)



**REV. G. L. MCGHEHEY**  
*Pastor Lake Street*



**REV. E. B. WILLIAMS**  
*District Superintendent*

Best Wishes

and Visitors

**INN**

ALL LIKE

Walnut St.

Arkansas

We Welcome You  
To Blytheville

## THE FIRST NATIONAL BANK

Blytheville, Arkansas

The Only National Bank  
In Mississippi County

**MEMBER**  
**FEDERAL RESERVE SYSTEM**  
**FEDERAL DEPOSIT INSURANCE CORPORATION**

Blytheville

Welcome To Blytheville

**HUDSON**

DIAL 261

**Summer Suit \$25.00**

Cleaning Service  
8 Hours For the Asking

**CLOTHIER AND CLEANER**

Arkansas

## SIXTH ANNUAL WORKSHOP ON MUSIC

Nashville, Tenn. — Leaders of national reputation will compose the faculty of the Sixth Annual Workshop on Music in the Church, a cooperative enterprise of Scarritt College and the Division of the Local Church, General Board of Education, scheduled to be held at Scarritt August 10-15.

J. Edward Moyer, professor of church music and speech at Westminster Theological Seminary, Westminster, Maryland, will lead a group in conducting and repertoire and an interest group on "The Organist in the Services of Worship."

Miss Edith Lovell Thomas, editor and compiler of outstanding church school music books, will have as her major responsibility music for junior boys and girls. Miss Thomas' latest book, "Music in Christian Education," is being published by Abingdon-Cokesbury Press.

Dr. S. Paul Shilling, professor of systematic theology of Westminster Seminary, will present and lead the discussions of theological concepts and their expression in music. He has lectured and taught in many conferences, institutes, pastors' schools and leadership training schools.

Division staff members who will participate in the workshop include Rev. Richard G. Belcher, Miss Emeline Crane and Rev. Larry Eisenberg.

The workshop is designed to PROSPECTIVE, published by help directors of Christian education, pastors, organists, church

## TEACHER AT PASTORS' SCHOOL

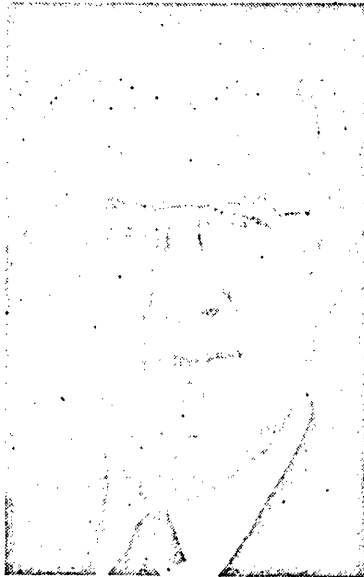
**D**R. EDWARD T. RAMSDSELL will lead the course on Christian Doctrine in the Arkansas Pastors' School July 7-11. The general theme of the course will be "The Faith of the Christian Church."

Dr. Ramsdell is Professor of Systematic Theology in the School of Religion at Vanderbilt University, Nashville, Tennessee, where he has been a member of the faculty since 1937. He holds B. A. and M. A. degrees from the University of Michigan and S. T. B. and Ph. D. degrees from Boston University. He also studied at Harvard, Edinburgh, and Marburg. He taught English and Public Speaking at the University of Colorado from 1923-26.

He is a member of the Tennessee Annual Conference, a Fellow of the National Council on Religion in Higher Education; and a member both of The American Philosophical Association and of the Southern Society for Philosophy and Psychology. He is the author of THE CHRISTIAN

school superintendents, choir directors, and church school teachers in their efforts to make music meaningful in the church's program.

The teacher is the most important classroom gadget so far as the youngsters are concerned — the audio-visual aid that dwarfs all others. — Editorial, Kansas Teacher.



DR. EDWARD T. RAMSDELL

Abingdon-Cokesbury in 1950, and of numerous articles in scholarly journals and magazines of the Church. — Roy E. Fawcett

## YOUNG ADULTS PLAN

The Louisiana Conference Young Adult Council met April 22, and completed plans for the Young Adult Conference Assembly, August 2, 3, at Camp Brewer. Mrs. Bert Denham, Maplewood, is president of the Council and is Assembly dean.

Miss Virginia Stafford of the General Board staff will serve as chief resource leader.

Each district has been assigned a quota of 20 young adults for this Assembly.

## VACATION SCHOOL INSTITUTES REPORT

Under the direction of Mrs. C. E. Mahaffey and the District Directors of Children's Work, twenty-two Institutes for Vacation Church School workers were held in March and April, in the Louisiana Conference, reaching 850 local church teachers and superintendents.

## A NATIONAL AT CAMP TANAKO

**O**SCAR ESCAMILLA will be an employee of Camp Tanako, Little Rock Conference, where he will spend the summer, June to September. He was born at Sabinas Hgo, Mexico, May 8, 1934. He graduated from the secondary schools of Mexico, after which he entered Holding Institute, Laredo, Texas, where he is now a Junior. When he finishes at Holding, it is his plan to go on to college for further training for the work of the Christian ministry.

Since he is from a family of limited means, it has been necessary for Oscar to work his way through school, except for the little assistance he has had from interested friends who know him and appreciate his fine spirit and purpose. We believe he will make a contribution to the camping season over and above the investment of his time and services. We are looking forward to



OSCAR ESCAMILLA

having him with us for the summer. — Roy E. Fawcett

## OLDER ADULT CAMPS OPEN SEASON

Three Older Adult Camps covering the entire Louisiana Conference will open the Methodist program, June 4, 5, 6.

These camps for older people beyond 65 years of age represent a new program in the Louisiana Conference. The schedule of the camps moves at a leisurely pace and includes crafts, worship, Bible study, discussions on local church work, group singing, and various form of recreation.

The three camps are scheduled as follows:

**Caney Lake**, for the Shreveport, Ruston and Monroe Districts. Rev. A. W. Townsend, Jr., director, Rev. Ira Barnett, Lakeland, Florida, General Board representative, and Mrs. Bryant Davidson, recreation leader.

**Camp Brewer**, for Alexandria and Lake Charles Districts. Rev. J. W. Ailor, director, and Rev. Robert S. Clemmons, representative from the General Board.

**Seashore Camp Grounds**, to be held June 11, 12, 13, for New Orleans and Baton Rouge Districts. Miss Elizabeth Thompson, director, Rev. Merlin Merrill, assistant, and Mrs. Leo Rippey, Nashville, Tenn., resource leader.

The groups will be in camp from Wednesday morning until Friday noon.

The easiest way to crush your laurels is to lean on them. — Highways of Happiness.

1872

808  
SARREY



TO  
CUMS

1952

Methodist Student Day  
June 8, 1952

WILL YOU HAVE A PART?

BOARD OF EDUCATION  
DIVISION OF EDUCATIONAL INSTITUTIONS  
106 BROADWAY NASHVILLE, TENN.

# WOMAN'S SOCIETY OF CHRISTIAN SERVICE

MRS. EWING T. WAYLAND, Editor

## CONFERENCE SCHOOLS OF MISSIONS ANNOUNCED

THEME: Proclaim The Good News

**North Arkansas Conference** — Hendrix College, Conway, June 23-27  
Courses: Africa — Teacher, Mrs. E. H. Farmer  
Home Missions and Human Rights — Miss Lydia Gearhart  
Preface to Bible Study — Dr. A. M. Serex  
Cost of Room and Board — \$10.00 Send \$3.00 Registration fee to  
Mrs. W. C. Buthman, 1160 Winfield, Conway

**Little Rock Conference** — Camp Aldersgate, Little Rock, July 23-25  
Courses: Africa — Mrs. Leo D. Wylie  
Home Missions and Human Rights — Mrs. J. Russell Henderson  
Preface to Bible Study — Dr. Aubrey G. Walton  
Platform Speaker — Miss Elizabeth Johannaber, missionary  
Cost of Room and Board — \$7.50 Send \$2.00 Registration fee to  
Mrs. Rufus Sorrells 4011 W. 12th, Little Rock

**Louisiana Conference** — Centenary College, Shreveport, August 25-29  
Courses: Africa — Mrs. E. H. Farmer  
Home Missions and Human Rights — Miss Emma Burris  
Preface to Bible Study — Dr. R. E. Smith  
Platform Speaker — Miss Beulah Reitz, missionary

All Schools will have the departmental clinics which will be held at Mt. Sequoyah for:  
Presidents, Vice-Presidents, Recording Secretary, Promotion, Missionary Education, Spiritual Life, Christian Social Relations and Local Church Activities, Literature and Publications  
Workshops: Program Building, Channeling Missionary Education, Administration and Publicity, and Study and Action

## NEWS IN BRIEF

Harmon, Elm Springs and Mount Hebron societies met May 22 at Elm Springs to hear the discussion by Mrs. Jessie Gilstrap, Mrs. R. K. Bent, Mrs. Bessie Andrews, Mrs. Howard Pearce, and Miss Betty Letzig of the plans for the new quadrennium.

Mrs. D. E. Wilson, Sr. is the new President of the Henderson Society in Little Rock; Mrs. P. F. Davis is Vice-President, Mrs. L. W. Heitman, Recording Secretary, Mrs. Bernard Creech, Promotion and Mrs. D. E. Wilson, Jr., Treasurer.

A study on Family Life in which the entire church participated was completed recently at Waldron under the leadership of Mrs. Gentry Priest. Worship services by the children, a round table discussion by the Young Married Couples Class, the White House Conference on Children and Youth, and an original talk by Mrs. B. J. Spillsbury were part of the programs. At the last session Mrs. Dora May was presented a Life Membership.

Rev. John Rushing, pastor at Emmet, installed the new officers of the W.S.C.S. at the evening service, May 18. Mrs. Ramey Garland is President; Mrs. Denman Wylie, 1st Vice-President; Mrs. Shelby Jones, Secretary; Mrs. Meredith Crumby, Promo-

tion; Mrs. Sam Townsend, Treasurer.

The first meeting of the Hot Springs Sub-District was held May 21 at which time Program Planning was presented as an actual demonstration of planning for June, July and August. Those taking part were Mrs. H. King Wade, Mrs. B. W. McCrary, Mrs. Archer Smith, Mrs. Higgins, Mrs. Lutterloh, Mrs. C. L. Harlan, and Miss Margaret Marshall. Worship centers for the three programs were made by Mrs. Smith.

Wesleyan Service Guild No. 1 of the First Methodist Church, Baton Rouge at its meeting May 27 presented a Baby Membership to Douglas Carroll Bonnacarrere, grandson of Mrs. Janie Pratt. An Adult Life Membership was presented to Mrs. Mabel Carson. Miss Eleanor Fleming is the new President of the Guild.

Two experienced women missionaries have been added to the staff of Kobe College, oldest college for women in all Japan, by the American Board of Foreign Missions of the Congregational Christian Churches. One is Miss Constance Buell, of Wellesley Hills, Mass., who was one of the last missionaries to leave China, having been "behind the bamboo curtain" under communist rule from 1946 to 1951. The other is Miss Angie Crew of West Milton, Ohio. Miss Crew has been in

## ANNUAL FINANCIAL REPORT—LITTLE ROCK CONFERENCE W. S. C. S.—1951-1952

Balance May 19, 1952	\$ 3,081.85	Projects, W. S. C. S.	12,317.15
<b>RECEIPTS:</b>		State Sanatorium, W. S. C. S.	600.00
Undirected Pledge:		Special Memberships, W. S. C. S.	5,535.00
W. S. C. S.	\$50,532.33	In Remembrance Gifts	163.50
W. S. G.	5,537.28	W. S. C. S. Credit on Pledge	60,749.79
Lenten Offering:		Pledge to Missions, W. S. G.	5,203.88
W. S. C. S.	532.73	Projects, W. S. G.	1,393.31
W. S. G.	14.50	Special Memberships, W. S. G.	680.00
Projects:		W. S. G. Credit on Pledge	7,282.19
W. S. C. S.	1,950.83	Total Credit on Pledge, W. S. C. S. & W. S. G.	68,031.98
W. S. G.	1,360.41	Youth Fund	2,194.44
Orlene McKimmey:		Children's Serv. Fund	156.08
W. S. C. S.	2,013.17	Total on Appropriations	70,382.50
W. S. G.	17.00	Week of Prayer	3,595.63
Wanda Stahley:		Foreign Supplies	1,507.51
W. S. C. S.	1,613.81	Home Supplies	2,232.53
W. S. G.	20.00	Supplementary Gifts:	
State Sanatorium	1,001.48	W. S. C. S.	270.00
Special Memberships:		W. S. G.	46.50
Hon. Baby	515.00	Cultivation Fund	29.51
Hon. Youth	45.00	Itineration—	
Adult Life:		Julia Vissota	80.00
W. S. C. S.	4,575.00	Car Insurance	44.63
W. S. G.	580.00	Bonding of Treasurers	33.39
In Remembrance Fund	153.50	Total to Division	\$78,222.25
Conf. Rural Work	893.66	<b>OTHER DISBURSEMENTS:</b>	
Little Rock Meth. Council	1,503.80	Administrative Expense	\$ 586.91
Credit on Pledge:		Printing & Mimeographing	355.10
W. S. C. S.	65,335.31	Annual Meetings:	
W. S. G.	7,529.19	W. S. C. S. & W. S. G.	568.91
Total Credit on Pledge	72,864.50	Jurisdiction Meeting	420.78
Youth Fund	2,194.44	Jur. School of Missions	187.26
Children's Serv. Fund	156.08	Conf. Inst. of Missions	146.74
Total on Appropriations	75,215.02	Cultivation Refunds—	
Cash for Supplies:		W.S.C.S. & W.S.G.	2,062.81
W. S. C. S.	2,933.17	Student Loan	622.57
W. S. G.	594.71	Alcohol Education	750.00
Supplementary Gifts:		Rural Work (Direct)	540.00
W. S. G.	46.50	E.T.W. Work	475.00
Cultivation Fund:		L.R.M.C. Expense	75.00
W. S. C. S.	1,699.21	Missionary Tour for Youth	93.04
W. S. G.	363.60	Peace Seminar	200.00
Week of Prayer:		Fellowship Training Lab.	125.00
W. S. C. S.	3,245.84	Purchase of car and repairs	798.16
W. S. G.	349.79	Scarritt Nat'l Seminar	80.00
Student Loan:		World Friendship Workshop	14.50
W. S. C. S.	587.57	Jur. Leadership School	35.50
W. S. G.	15.00	Auditing—1951	35.00
Alcohol Fund:		Julia Vissota—Honorarium	50.00
W. S. C. S.	766.46	Ark. Legislative League	26.00
W. S. G.	14.51	Jurisdiction Cultivation Fund	354.15
E. T. W. Fund:		Visitation Day Speech Del. to Convocation	50.14
W. S. C. S.	809.60	at Perdue	40.00
W. S. G.	13.00	Council Church Women Meth. Comm. Overseas Relief	50.31
Other Receipts	138.16	Rent on Safety Box	15.00
Total Receipts:		Other Expenses	69.68
W. S. C. S.	77,915.84	<b>TOTAL DISBURSEMENTS</b>	\$87,034.21
W. S. G.	8,926.30	Balance May 20th, 1952	\$5,215.31
Total Receipts from Districts	86,842.14	MRS. C. I. PARSONS, Conference Treasurer	
Other Receipts:			
From Taylor Endowment Fund to apply on Miss Marshall's salary	990.00		
From sale of car at Booneville	675.00		
From Bd. of Education on E. T. W. work	150.00		
Refunds	238.08		
Offerings from annual meetings	322.45		
<b>GRAND TOTAL</b>	\$89,217.67		
Add balance—total to account for	\$92,293.52		
C.S.R. & L.C.A. reported	\$52,621.86		
<b>DISBURSEMENTS:</b>			
Pledge to Missions:			
W. S. C. S.	\$42,134.14		

## MRS. PAUL E. MARTIN HONORED

The Woman's Society of Christian Service of the First Methodist Church, Shreveport, honored Mrs. Paul E. Martin, wife of the bishop of the Arkansas-Louisiana Area, at a tea on Wednesday afternoon, May 28, in the home of Mrs. W. O. Crain.

The guests were welcomed at the door by Mrs. Clarence O. Day and ushered into the living room, where Mrs. Crain, Mrs. C. B. McEachern, president of the society; missionary service in Turkey and in Japan since 1923.

Mrs. Martin, Mrs. Guy Hicks, Mrs. J. H. Bowdon, Mrs. C. W. McQuaid and Mrs. F. M. Freeman formed the receiving line.

Mrs. W. M. Ledbetter and Mrs. George Sexton, Jr., alternated at the silver punch bowl in the dining room and Mrs. A. J. Peavy and Mrs. J. J. Mickle served in the library.

Members of the executive board were included in the house party and assisted in the serving.

The ladies of the church, wives of the delegates attending the Louisiana Conference and other ladies attending the conference were invited to call.

# CURRENT NEWS IN ARKANSAS METHODISM

## MR. COPEs ON LEAVE OF ABSENCE



V. Earl Copes, associate professor of music at Hendrix College, Conway, and minister of music at Pulaski Heights Methodist Church, Little Rock, is taking a leave of absence from the college and the church. He will leave

## MINISTERS' WIVES OF CAMDEN DISTRICT MEET

The Ministers Wives of the Camden District met in Magnolia May 14, 1952 for a "Tea" and the third and last meeting in this Conference year.

Mrs. E. L. Thomas was hostess to the group. Fifteen wives of ministers of the District and a special guest, Mrs. Subhan, wife of Bishop Subhan of India, were present.

Mrs. J. D. Montgomery of El Dorado as president conducted the business meeting.

A beautiful embroidered linen cloth covered the dining table which held a crystal punch bowl. Decorative cakes and sandwiches were served from silver trays. Sweet peas in a cut glass bowl centered the table. Roses and magnolias were placed at vantage point throughout the house.

All the meetings of this organization have been well attended

with his family this week for the University of Texas where he has a teaching fellowship in organ and church music.

## FESTIVAL OF HYMNS AT WINFIELD

Sunday night, May 25th, Winfield Methodist Church choir presented a Festival of Hymns.

The service was based on the theme of the Life of Christ in Hymns. Portions of scripture were read by the Rev. Jeff E. Davis and Ellen Upton. The

and enjoyed by every one. — Reporter.

Hymns of the Month which had been learned during the year were reviewed and appropriate stories given by Patricia Lee, Bob Ellis and M. L. Scott, Jr. Special organ arrangements of hymns were played by Mrs. Everett Bowman and Miss Clairetta Weidemeyer.

Quartet and solo parts were sung by Wesley Weidemeyer, Bob Pollock, Bing Casey and R. A. Major. C. E. McMeans is director and Mrs. Bowman, organist for

(Continued on page 13)

## STEPHENS CHOIRS AT EASTER

Below is pictured the three combined choirs of Stephens Methodist Church, made immediately following the Easter Sunday morning service.

The two children's choirs are under the direction of Mrs. Alfred I. Doss, with a total of forty-five voices. Each child carried an Easter lily in the lily processional at the beginning of the service. Both choirs gave anthems: The Juniors — "Lilies" by Tillotson, The Primaries — "When Easter

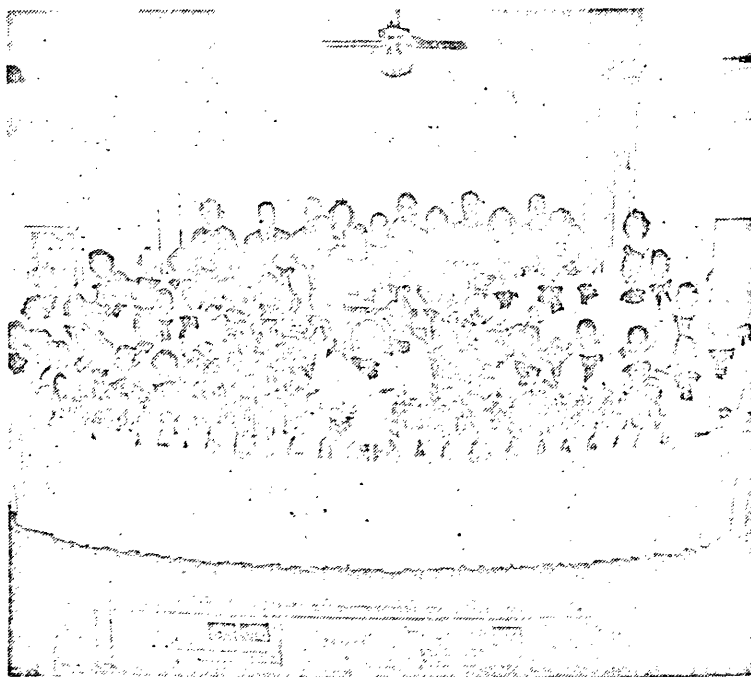
Comes". Mrs. Ima Morgan is the pianist.

The Adult Choir sang "O Tell the Triumph Tidings" by Walter. Mrs. Nora May Hare is the director and Miss Nora Morgan the organist. At the evening hour the Adult Choir gave the Easter cantata: "Portals Everlasting" by Walter.

The church enjoyed record attendance upon all activities of the day.



New Parsonage, FIRST METHODIST CHURCH, BLYTHEVILLE, erected in 1949-50.



Welcome Visitors  
To  
**SNYDERS CAFE**  
You'll Like Our Service

Blytheville

Arkansas

See The  
**New Ritz Theater**

Modern In Every Way  
Every Need of Patrons Met

Blytheville

Arkansas



## "Along A Country Road" The Town and Country Commission

The Methodist Church  
The North Arkansas Conference  
Hendrix Station, Conway, Arkansas  
Paul E. Martin, Bishop  
Rev. Floyd G. Villines, President  
Mr. Lester Hutchins, Vice-President  
Rev. N. Lee Cate, Secretary  
Rev. J. Albert Gatlin, Executive Secretary

### AT NEW HAVEN, RECTOR AND VANNDALE

Sunday, May 18, the writer preached for the fine people at New Haven on the Brooklyn Charge. A small but attentive congregation was present. They are continuing their work in a splendid way.

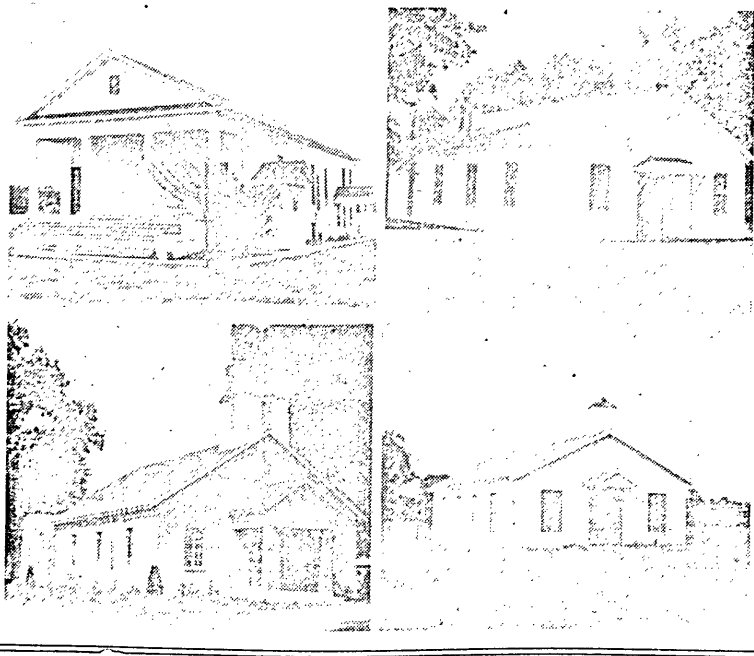
Sunday night it was a high privilege to bring the commencement sermon to the high school graduates at Rector. A large class, assembled with their families and a great host of friends in the new and beautiful gymnasium, made the service most inspiring. A most beautiful picture of one of the later artist conceptions of the head of Christ and painted by the Rev. Mitchell Sanford was presented to the speaker as a gift of appreciation on that occasion. Brother Sanford did a marvelous job. He was the sponsor of the class for this year. We were privileged to be in a fellowship supper sponsored by the Lawson Swindle and Robert Mebane families preceding the service.

Sunday, May 25, we were delighted to be with Rev. J. H. Richardson, who has had the unusual privilege of building a church or an addition to a church at every point on his charge. At

Pleasant Hill a new church building valued at \$2000 was erected, at Cherry Valley a new building of tile brick costing \$10,000 was completed and at Vanndale a beautiful new annex at a cost of more than \$4000 was constructed. Now, to complete the church building program, a splendid \$3,000 church has been built at Farm Hill.

The parsonage at Vanndale was destroyed by the tornado and plans have already been made to rebuild a modern three bedroom brick parsonage.

At Cherry Valley the attendance at the Sunday School over the four year period of this pastorate has increased from an average of thirty to over a hundred. An increase of twenty per cent has been achieved at Vanndale and there has also been an increase at the other churches. A large number of additions have been received on the charge. The W.S.C.S. has been re-organized at Cherry Valley and Pleasant Hill. Interest on the charge in all other lines has been in proportion. Indeed this had been a magnificent achievement on the Vanndale Charge. — J. Albert Gatlin



Nothing on earth can remain motionless without decaying. The airplane remains aloft because it moves forward. If peace is to be preserved, we must give peace a motor. And what could such a

motor be if not the ideal of human progress, the will to live under the law a worthier life? — Jaime Torres Bodet, "Crusade Against Ignorance."

### OBSERVES GOLDEN WEDDING DAY

Mrs. Patchell and I had our Golden Wedding Day May 20. The church people of Newport gave us a lot of recognition and much else besides.

Newport is a mighty fine place for a retired preacher and his family to live. It is all kindness and sympathy and help on the part of the people here in their attitude toward us. We could not have selected a more favorable place for our home. We are thankful for everything.

And as the shadows lengthen and evening advances toward inevitable night we find that the best part of life's road is the part we are traveling together now. — George E. Patchell.

### SUMMER AGENCIES

Nashville, Tenn. — Reports for 1951 from 153 Methodist youth summer agencies reveal an attendance of 19,924, according to the Rev. Harold W. Ewing, director of the Youth Department, General Board of Education. This total does not include the 252 staff members used in these agencies.

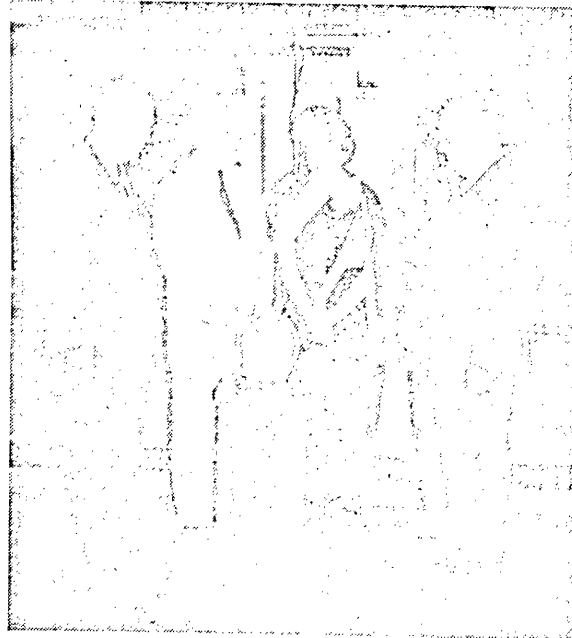
### FESTIVAL OF HYMNS AT WINFIELD

(Continued from page 12)  
the Sanctuary and Chapel Choirs. Mrs. C. E. McMeans is director of the Intermediate and Winfield Junior Singer Choirs assisted by Miss Margaret Fiser, Miss Clair-etta Weidemeyer, and Mrs. Wm. R. Wilson. — Reporter

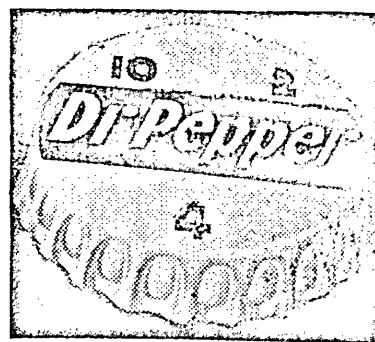
The report covers something over half the total number (306) of Methodist institutes, camps and assemblies held during the summer months for seniors and older youth, estimated attendance of which was given as 39,841. The total attendance of staff in all agencies was estimated to be 5049, making a total estimated attendance of 44,890.

A breakdown of the total reported, according to age groups, showed that seniors had the largest attendance — 17,655, while 1764 older youth attended, and 505 adults.

Of the agencies reporting, those in the North Central Jurisdiction had the largest attendance—7997. The South Central ranked second with 4116. Attendance in the other four jurisdictions was: Southeastern, 3376; Northeastern, 2346; Western, 1675; Central, 414.



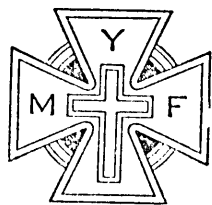
Bishop John A. Subhan, India, recently concluded a tour of all the Arkansas Districts, speaking in missionary rallies. Pictured here are Rev. E. B. Williams, Jonesboro District Superintendent, Bishop and Mrs. Subhan and Rev. A. N. Storey, Paragould District Superintendent. Bishop Subhan is pointing out his field of service to Brother Williams and Brother Storey at the Jonesboro-Paragould Missionary Rally held at the First Methodist Church, Paragould, Wednesday evening, May 21.



Look For  
**DR. PEPPER**

311 East Main  
Blytheville, Ark.





## ARKANSAS-LOUISIANA

Methodist

Youth

Fellowship

NEWS

### NEW LOUISIANA CONFERENCE YOUTH OFFICERS

The Annual Conference of the Methodist Youth Fellowship met in Alexandria, May 3, at which time the new Conference Youth Council was elected. The new officers are:

Kennon Moody, president; Lamar Robertson, vice president; Betty Willis, secretary; Jimmy Donaldson, treasurer; Peggy Donaldson, publicity; Joan Boyd, worship; Mary Law, community service; Ed Lucas, world friendship; Lynn Jordan, recreation.

Highlight of the program was the Wiley College Choir of Marshall, Texas, which presented a musical program.

Betty Willis gave her prize winning speech, "What You Should Know and Do About Alcohol and Other Narcotics." And concluding the program was the inspiring address, "Still He Calls," by the Rev. George Ivey.

These officers were installed by Bishop Paul Martin, Thursday night, May 29, at 7:00 p. m., at the Annual Conference.

### SWIMMING POOL READY

Work has begun on the deep well and concrete swimming pool at Camp Brever, in the Louisiana Conference, according to Rev. Jolly B. Harper, district superintendent.

The Methodist Youth Conference brought in about \$1,000 on this project and many other donations are yet to be made.

The pool will be ready for the June camping season.

What we need is a return to the morality that says, "Right is right even tho nobody is right; and wrong is wrong even when everybody is wrong." — Clement C. O'Sullivan, Missions.

### LITTLE ROCK DISTRICT METHODIST YOUTH FELLOWSHIP

The Little Rock District M. Y. F. met at the Salem Campground for the final business meeting of this year.

Emogene Dunlap led in the recreation and fellowship period. Supper was spread at 6:00 o'clock, each person having brought his own lunch.

President Billy Joe Hogue gave the president's annual report, including the goals set up the council, recommendations to the new council and a list of last year's activities.

Since the District Council operated last year without funds, an offering was taken, resulting in \$23.33.

Election of officers was held with the following officers being elected: President, Bill Hayes, Benton; Vice-president, Virginia Bearden, Asbury; Secretary, Patricia Couch, Salem; Treasurer, Buddy Worden, Twenty-eighth Street Church; Publicity, Carl Miller, First Church. Commission Chairmen are: Worship and Evangelism, Martha Sanders, Pulaski Heights; Recreation, Martha McOsker, First Church; Missions and World Friendship, Janice Miller, Bauxite; Community Service, Judy Tabor, Oak Forest; District Director, J. Russell Henderson. Dr. F. A. Buddin, district superintendent of the Little Rock District, installed the new officers.—Secretary

### Church Furniture

Circular and Straight

Pews-Pulpit Furniture

Special Designs—

Write for Catalog

BUDDE & WEIS MFG. CO.  
DAVISON, TENNESSEE

### Razorback Cafe

On Highway 61

Air Conditioned

Blytheville

Arkansas

PAGE FOURTEEN

## "Dramatics Workshop" Held In India

By BETTY L. JOHNSON

Byculla, Bombay, India

A "Dramatics Workshop," the first of its kind to be held in Bombay, India, was sponsored by the Bombay Sub-District Methodist Youth Fellowship. Harold Ehrensperger, eminent in the fields of religious drama and journalism, spent three weeks with the group of young people in this unique experiment. The young people who participated had an opportunity to act, as well as learn some of the techniques of directing religious drama.

The final evening of the Workshop was opened to interested persons, and a large group of young people and others attended this session. It was conducted in the same manner as the previous sessions, and the young people gave two scenes from the "Family Portrait," which they had been using in the Workshop for practical experience.

Here is an account written by one of the members: "Generally the family life of our Lord Jesus is not shown in a drama. Such an attempt was made recently in Bombay at Taylor Methodist Church. The story of the 'Family Portrait' was explained to the young men and young women who had volunteered. A strict course of three weeks was given under the direction of Mr. Ehrensperger. Each person who agreed to take part in the Workshop had the opportunity to be trained for the part he was to act. The first scene depicting the family at breakfast was shown in a most natural way. This scene gave the

idea of the simple way the Jews in Palestine lived in the time of Christ. In the second scene we see Mary the mother of Jesus, telling the family how Jesus had gone about preaching, healing, comforting, blessing children. She also told how Jesus in his three years ministry taught people to love their enemies, and to be kind to those that hate you. This drama created a very good impression I am told, and showed how badly we need religious dramas of this type. It served the purpose of a good sermon. (Mary Mane)."

Members of the Methodist and other churches took part; also young people from the Y. M.-C. A., Y. W. C. A., and the Neighborhood House. This loyal group of young people spent three weeks of hard work because they were interested in having religious drama used as a means of reaching people for Christ. Plans are underway for carrying out the ideas gained during this Workshop.

### GOWN'S

PULPIT • CHOIR  
CONFIRMATION • BAPTISMAL

DOCTORS • MASTERS

BACHELORS

CAPS  
GOWNS  
AND  
HOODS

EST. 1912

BENTLEY & SIMONS  
7 WEST 36 ST. • NEW YORK 18, N.Y.

Welcome Visitors

DRINK  
Coca-Cola

Blytheville, Arkansas

ARKANSAS METHODIST

## METHODISTS MAY CREATE THREE NEW EPISCOPAL AREAS

**T**HE Methodist Church may create three new episcopal areas at jurisdictional conferences this summer.

Even before the current spring conferences which are registering additional membership increases, the Northeastern Jurisdiction had increased its membership to the point where it might add an episcopal area at its session in Harrisburg, Pa., June 11-15. Its 1,857,845 members as reported in the 1951 General Minutes now entitle it to seven episcopal areas—four as a minimum for each jurisdiction under Par. 439 in the Discipline and one additional bishop for each 500,000 church members or two-thirds thereof beyond the first 500,000.

Just where the new episcopal area would be created in the Northeastern Jurisdiction would have to be determined at the Harrisburg meeting, although popular opinion has seemed to favor separating West Virginia from the Pittsburgh Area because of the great strength of Methodism in that state and the fact that the Pittsburgh Area has a much larger total membership than any other area in the jurisdiction. Latest reports show it to have 465,452 members, with the Washington Area coming next in membership with 370,795.

As a result of legislation amending Par. 439 at the 1952 General Conference, the North Central and South Central Jurisdictions may each add another episcopal area at their forthcoming sessions in Milwaukee, Wis., July 9-13, and Wichita, Kan., June 27-July 1, respectively.

The permissive legislation affecting these two jurisdictions at this time makes it possible for the jurisdiction to lower its test figures for the election of bishops when the average area in the jurisdiction is more than 70,000 square miles.

When the average episcopal area exceeds the 70,000-square-mile limit, then the jurisdiction shall be entitled to four bishops for the first 400,000 church members or less, and for each additional 400,000 church members or two-thirds thereof shall be en-

titled to one additional bishop.

The resolution adopted at San Francisco cited the South Central Jurisdiction as having 131,621 square miles as the average size of its episcopal areas. While the North Central Jurisdiction's areas' average size is much smaller than their neighbor to the south, they do exceed the specified 70,000 square miles figure.

"The effectiveness of a bishop, both physically and administratively, is impaired in ministering to episcopal areas covering extremely large land areas," the resolution declared as one of the reasons for the modification of the existing rule.

The 1951 figures for the South Central Jurisdiction showed 1,739,045. When tested by the revised rule of 400,000 members entitling a jurisdiction to four bishops, and an additional bishop for each additional 400,000 members or two-thirds thereof, the South Central could increase its episcopal areas from six to seven.

Anticipating the difficulty in knowing where to draw the lines if a new area is to be created, the Jurisdictional Council at a recent meeting in Oklahoma City named a special committee, consisting of one representative from each area, to work on possible plans for a new area. The Kansas-Nebraska Area has the largest membership—336,027—and in geographical extent is second in size to the Oklahoma-New Mexico Area. Many observers have felt that the break may be simply to divide Kansas and Nebraska into separate areas if the jurisdiction decides to take advantage of the new legislation, which is not mandatory.

In the North Central Jurisdiction there is a well-defined move to break the Dakotas off from Minnesota, thus creating a new area out of what has been the St. Paul Area. This three-state area is the only one in the jurisdiction having more than one state at the present time, and while its membership is not large, its potential is great with new developments under way in the Dakotas.

Methodist leaders from the

## OBITUARY

**LUCK** — Mrs. Ada Belle Luck was born in the Bingen community on March 5, 1883, the daughter of William Thomas and Martha Higgins Hyatt. Her father was one of the pioneers of this community. She spent her entire life here. She was married to Gaston I. Luck who preceded her in death by some five years. Surviving is a son, Jerome Luck of Shreveport, La.

Mrs. Luck was a member of the Bingen Methodist Church for more than fifty years and a teacher in the Sunday School as long as her health would permit. In all my ministry I have not known a greater Christian spirit. She loved God and His kingdom and spent her life trying to ad-

vance His cause. The Bingen Church and the community have lost a friend and a choice Christian spirit.

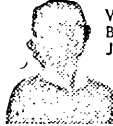
Other survivors are a brother, E. M. Hyatt of Roswell, New Mexico; three sisters, Mrs. F. A. Holt, Antlers, Oklahoma, Mrs. R. P. Leslie, Purcell, Oklahoma, and Mrs. H. O. Hembey, Little Rock.

Burial was in the Ozan cemetery at Bingen on December 13, 1951. — T. M. Armstrong, former pastor.

## CHRISTIAN GREETING CARDS

Our box of 21 beautiful Scripture Text Christmas folders is value unexcelled. These cards add spiritual quality to the Christmas season and make people conscious that CHRISTMAS is Christ's birthday. As Special Sample Offer we will mail, postpaid for \$1, these 21 folders plus a box of 16 Scripture Christmas Notes. Money refunded if not satisfied. Groups raise funds, agents make money. Profit up to 100%. Write for approval samples. SHEPHERD'S TOWN CARD CO. Shepherds town, Pa. Box

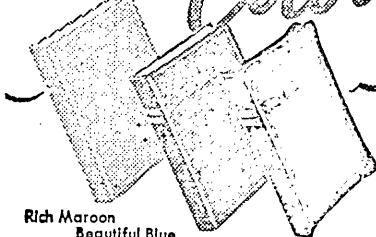
## GOWNS



Write for FREE Choir Gown Style Book J4, Pulpit Apparel Style Book JP54. Ask for Budget Payment Plan. Confirmation Gowns—rental or sale  
**E • R • MOORE COMPANY**  
932 Dakin St. Chicago 13, Ill. 11 West 42nd St. New York 18, N. Y.

## The Traditional Bible with COVER

in *Color*



Rich Maroon  
Beautiful Blue

Traditional Black

Crystal Clear type—easy to read!

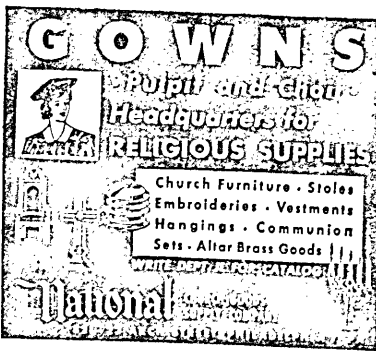
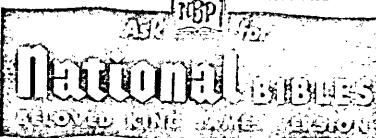
America's Most Beautiful Bible... now with covers in color! The perfect gift to meet every Bible need.

No. 455CM—Maroon leather; limp covers; gold edges; silk marker; concordance and maps.

No. 454CB—Same; Blue leather.

No. 453C—Black leather; overlapping covers; gold edges; silk marker; concordance.

AT YOUR BOOKSTORE



## THE MOORE'S CAFETERIA



415 MAIN STREET

LITTLE ROCK, ARK.

We Specialize In

**Fresh Frozen Vegetables And Fruits**

From Our Own Deep Freeze Lockers  
Owned and Personally Supervised By

**Mr. and Mrs. Merlin M. Moore**

"In the heart of the shopping district"

## Scotty's Service Station

**PHILLIPS 66**

Arkansas-Missouri State Line

Blytheville, Ark.