

# Arkansas Methodist



"SERVING TWO HUNDRED THOUSAND METHODISTS IN ARKANSAS"  
Official Publication of Arkansas Methodism

VOL. LXXI.

LITTLE ROCK, APRIL 24, 1952

NO. 17

## A Real Opportunity

ONE of the most inspiring and worthwhile projects undertaken by The Methodist Church in recent years is the making of a full length sound movie based on the life of John Wesley, founder of Methodism. This \$120,000.00 project is being sponsored by the Methodist Radio and Film Commission and its leaders are now securing the necessary funds for financing this endeavor.

It would be difficult indeed to estimate the value that such a film would have in furthering the cause of Christ by portraying the life and work of Wesley. The surprising thing is that this project has not already been completed years ago. Present plans are to have this production made by the J. Arthur Rank Company, London.

It is quite likely that many Arkansas and Louisiana Methodists would like to have a part financially in this production. Indeed, a few have already made contributions. Bishop Charles Selecman, who is representing the Radio and Film Commission in this production, reports that already more than one-third of the necessary funds are in hand. Those interested in having a part in making possible this needed movie may send their contributions to the Radio and Film Commission, marked "John Wesley Film", % Bishop Charles C. Selecman, 6001 Hillcrest, Dallas, Texas.

## Methodism's Successful J&M In Washington

UNDER the caption, "Washington Methodists Hold Largest Conclave in History Here," the Washington Religious Review writes about the ten-day United Evangelistic Mission held by the Methodist Churches in Washington D. C., beginning March 1st.

According to this Washington News Letter, the results in the Washington United Evangelistic Mission were little short of marvellous. In the ten-day campaign by the Methodist Churches in Washington, the total attendance in the church services was 100,000, or an average daily attendance of 10,000. The number of commitments for membership in the cooperating Methodist churches was 8,976, or an average of 898 for the time the campaign ran.

We may have a better conception of the amazing success of this evangelistic campaign if we compare the results with the results of the interdenominational, nationally publicized revival held in Washington by Evangelist Billy Graham and his party, which ran from February 17th to March 17th. The Billy Graham revival ran thirty-five days, with a total attendance of 310,000, or an average daily attendance of 9,593 from all of the churches in Washington. The number of commitments

(Continued on page 4)

## Church Must Meet Challenge Of Materialism

THE Christian church faces a different situation today than any it has known since the days of Constantine. Not since the Roman Empire attempted to annihilate the Christian church has it faced such a combination of world powers as now propose to destroy it.

Communistic nations, with a total population approaching and possibly exceeding eight hundred million people, are positively and aggressively anti-Christian. Holding to this god-



less theory means that their philosophy of life is purely materialistic. We must realize that a materialistic force of this character and size is an open challenge to the Christian church.

Christianity also faces the challenge of materialism in nations commonly considered Christian. The spirit of materialism is rampant in our American life. Only a little more than half of the total population of our nation have membership in any church. This means, of course, that a great mass of people in America outside the church are basically materialistic in their philosophy of life.

Unfortunately membership in the Christian church does not guarantee the absence of the spirit of materialism in the life of an individual. Any student of the church recognizes that it must carry forward its work many times in the face of the fact that numbers of its members lack the spiritual viewpoint.

Present world conditions furnish an ideal sounding-board for the proclamation of the fact that a materialistic approach to life's problems has brought the world to the brink of self-destruction. The world must be made to see that "righteousness exalteth a nation" and would save the world.

## America Needs Statesmen

AMERICA has an overproduction of politicians and a critical, dangerous shortage of statesmen. Without question, our nation faces today the most critical period in its history. There are so many cross currents in the world and so many cross currents even in our own nation that the official who always tries to discover which way the wind is blowing before he decides how he is to cast his vote on pending issues is about as useless and worthless as any other "me too" timesaver.

Never before has America needed so badly capable, conscientious, sincere statesmen. Whether we like it or not, America is in a position of world leadership. We cannot possibly meet the responsibilities such a position carries if our national and international policies are to be determined by petty politicians who feel that they must always lie down with their ear to the ground before they can stand up and vote. We need statesmen who place the welfare of the nation and the world above personal, political ambitions. The destiny of our nation, and possibly the peace of the world, in this critical period, is in the hands of our national leaders. Such a responsibility should make statesmen even out of self-seeking politicians.

## Methodism At The Crossroads

AT the time of this writing it is the eve of the 1952 session of the Methodist General Conference, and delegates and visitors are gathering in San Francisco, California, for the quadrennial meeting. Perhaps never before has so much depended upon a Methodist General Conference. After more than a dozen years since unification, there are certain observable trends which if allowed to come to maturity would do anything but strengthen Methodism. On the other hand there are other signs that Methodism is on the brink of entering into a great period of increased usefulness in the world. The great mission of the General Conference, as we see it, is to cast off the shackles that would cause it to simply maintain the status quo and launch out with courage and vision to fulfil its mission and destiny.

A General Conference is a gathering of the best in leadership of Methodism. These Annual Conference Leaders, elected by their respective Annual Conferences, merit every confidence and hope of those they represent. During the course of the Conference they will be called upon to make some rather significant decisions, many of which will determine the course of Methodism at the crossroads. We have every confidence that what will be done at General Conference

(Continued on page 4)

# Struggling To Keep Faith

By ARTHUR TERRY, Pastor, Asbury  
Methodist Church, Little Rock

John 21:2-5—"There were together Simon Peter, and Thomas called Didymus, and Nathanael of Cana in Galilee, and the sons of Zebedee, and two other of his disciples. Simon Peter saith unto them, I go a fishing. They say unto him, We also go with thee. They went forth, and entered into a ship immediately; and that night they caught nothing. But when the morning was now come, Jesus stood on the shore; but the disciples knew not that it was Jesus. Then Jesus saith unto them, Children have ye any meat? They answered him, No."

**F**OLLOWING the resurrection several of the disciples had returned to Galilee. Perhaps they returned there because it was home and there was no longer anything to occupy them away from home. Or perhaps they were afraid in Jerusalem and felt a sense of security at home. Certainly, the fact that Jesus had told those women to whom he had appeared on Easter, "Tell my disciples I go to Galilee," had some effect upon their going there.

You and I know enough about human behavior to know that these seven, or more, unemployed men met daily to discuss their common problem and their common experience. Their problem was they had lost their Master. Their common experience being they had had fellowship with their risen Lord. One day they would meet in the courtyard in the home of Salome, the mother of James and John. The next day down by the sea, and having been fishermen, some days they would row out to their idle fishing ships riding at anchor.

Always they talked about the glorious experience of His risen Presence. Always they ended up by expressing their inability to understand how it could be so. Here was something they knew they had experienced but because they were unable to explain it, even to themselves, they found it difficult to believe. I can imagine Thomas saying, "I just don't see how it is possible for Him to be alive" and soft spoken Nathanael replying, "But Thomas you have to believe. He gave you the opportunity to put your finger in the nail prints in His hands and told you not to lose faith. You have to believe." "I know," said Thomas, "and I want to believe, but I can't understand."

As I study the lives of the disciples I am both amazed and gratified to discover that they undoubtedly passed through experiences exactly like you and I pass through. They certainly must have had a struggle to keep faith and you and I have to struggle to keep faith. Deep in our hearts we do believe and yet we find it difficult to understand some things about our own Christian experience. On every hand we find things challenging our faith.

For one thing catastrophe is hard on our faith. In our last extremity on a rubber raft, in a fox hole, we can have faith. When

a lad's plane is shot to pieces he can come in "on a wing and a prayer." But out on the periphery of that catastrophe we are asking "Why doesn't God stop the war?" You see we were expressing our desire to keep faith and our difficulty to keep it. That same thing happens to us when in our great sorrow we ask, "Why did God let this happen to me?" You see, we want to believe that God is good, but how can He be if He lets this happen to me? Notwithstanding our concept of God may be wrong, we are struggling to keep faith, just as these disciples were.

Then the secularism in which we live is always hard on our faith. Our faith teaches us that there are certain things that are right and certain things that are wrong in human relationships, but the competitiveness of our secularism not infrequently challenges our Christian principles. Deep down in our hearts we want to abide by the teachings of our Christian faith but we often find it impossible to do so and hold our own in a competitive secularism.

It can be so easy for a minister to lose sight of the struggle men have to keep faith for of necessity he lives in the spiritual realm. I have often had occasion to compare the Christian faith of one of the most deeply consecrated Christian ministers I have ever known — Dr. Forney Hutchinson, with that of one of the finest Christian laymen I have ever known, — his brother Tom. And I always say Tom has a greater faith than Forney because he has had to struggle harder to keep it. Forney breathes a spiritual air. He prays twenty times in a day. In fact he never stops praying. He quotes scripture by the page and "hists" a hymn anywhere. Tom spends his days in a secular world — or did until recently — and went home to a sick wife. Nevertheless he has maintained a great faith — but not without a struggle.

Certainly, none of us escape the temptations by which the secularism in which we live challenges our faith. The minister is tempted to be "a hale fellow well met" with whom men of the world are at ease, when he should be a man who lives so close to God that when men in difficulty come to him they find God. Young people want to have faith. They want to believe but our secularism insists that it is smart to do what our faith does not allow.

The disciples were face to face with catastrophe. Their Master had been crucified. Their very lives might be in danger. They faced a secular world in which they had to live. They were struggling to keep faith.

I can imagine they were out on Simon Peter's boat, bobbing at anchor. It was nearly sundown. Soon they would be getting in a little boat and going ashore. They had come to that closing part of each day's discussion where they were saying, "The experience of witnessing the Presence of



the Risen Lord was wonderful — but — but I can't understand it. I want to believe, but can't" Simon Peter looked out across the sea of Galilee — the waters looked like they had looked so many evenings when they had gone out in the night and made a great catch. He looked at the nets, heaped limp upon the deck. He eyed the furling sails of the ship. Suddenly he said, "I'm going fishing." Without discussion they all said, "We are going with you."

We have said a great deal about these men going back to their former occupation with the implication that they had turned their backs on their call to preach and had become backsliders. But having lived in close fellowship with these men for thirty years, and having been daily in their company, in a spiritual sense, for the past six weeks, I am confident they were not backsliding. This was a part of their struggle to keep their faith. You remember, my friends, Jesus called these men right out of their boats. I have a very strong conviction that these men were going out to live in an atmosphere which was clean and wholesome, one to which they were accustomed and one out of which they came to Christ, that there they might relive their experience and maintain their faith.

Up came the anchor, which for well over a year had rested on the bottom of the sea. The ship was suddenly alive. It seemed good to be back in the accustomed groove. The pulley screeched on its axle as the sail was unfurled. But, from the first, things went wrong. The sails had mildewed and rotted and the first puff of wind slit the main sail. Just as Andrew made fast the rope that hoisted the sail, the rotten rope broke and the sail lay in a heap on deck. It was long after dark when they got under way. The first cast of the net brought that rewarding tug of caught fish lashing into the net but when the net was hauled in there

(Continued on page 3)

# General Conference Now In Session

BY METHODIST INFORMATION

**T**HE fourth quadrennial General Conference of The Methodist Church opened in the Civic Auditorium in San Francisco, April 23. At least twenty-five countries are represented.

This is the supreme law and policy-making body of the church which was formed in 1939 by the reunion of three Methodist bodies and which now numbers, at home and abroad, about ten million members.

Seventy bishops, active and retired, occupy the platform along with the nine-man Judicial Council, Methodism's supreme court. At tables on the floor of the arena are seated the 720 elected delegates.

Fraternal messengers are in attendance from other autonomous Methodist bodies, as well as official spokesmen for sister denominations and the National and World Councils of Churches.

The traditional episcopal address, a corporate utterance signed by all the bishops, was read on the first evening by Bishop Paul B. Kern of Nashville, Tenn., its author. This lengthy document is similar in purpose to the President's message at the opening of a new Congress.

Following its delivery the bishops, according to Methodist usage, take no further part in influencing legislation. While they have neither voice nor vote during the two weeks of the Conference, they do preside over business sessions and speak at devotional services.

The election of bishops, once a central feature of General Conferences, was removed from the agenda by the Plan of Union. Episcopal vacancies are now filled by elections held in quadrennial conferences of the six Jurisdictions into which the church was partitioned for administrative purposes. These Jurisdictional Conferences meet this June and July.

Of top interest on the San Francisco agenda is the controversial report of the Survey Commission, a group empowered by the 1948 General Conference to study Methodist organization and to present in 1952 a kind of "Hoover plan" for such changes as might prevent overlapping, effect economies and improve administrative efficiency. The Commission has been aided in its survey by a firm of industrial engineers, the project costing \$240,000.

Opposition to the Survey Commission's proposals which was presented to delegates last December, is largely on the grounds that the recommendations demand more sweeping changes than are deemed necessary to correct present inadequacies, that the economies promised are not certain and that undemocratic concentrations of power would result from certain top coordinating bodies called for in the report.

The Conference will hear protests against the use of the word "Methodist" in the title of the unofficial Methodist Federation for Social Action, as well as demands for its eviction from the Methodist building in New York, where it has had its office since 1907. At the same time others will ask the Conference to set up an official social action body within the framework of the Church to implement the denomination's long-standing "Social Creed."

Woman's right to full ministerial privileges will again be debated by the Conference. At present women may be licensed as lay-preachers and may receive lay-ordi-

nation, but they are not now eligible to ministerial membership in annual conferences nor are they entitled to episcopal appointment.

A report on the ministry will uphold rigid educational standards for the clergy and urge retention of the present denial to all but fully ordained Conference members the right to administer Holy Communion. One recommendation in this report seeks to eliminate the pledge required of ministerial candidates that they will not smoke.

Legislation comes to the Conference through "memorials" filed with the secretary, Dr. Lud H. Estes of Milan, Tenn. These memorials (petitions for legislative action) are referred to appropriate committees. The committee reports, after publication in the Conference daily, are presented to the plenary session by the respective chairman for debate and action. More than 1,000 memorials have already been received and 1,500 are expected.

Outstanding event in the Methodist fortnight was the Sacrament of the Lord's Supper administered the first morning under the direction of senior Bishop Herbert Welch of New York, now in his 90th year. The issuance of the first volume of "The Interpreter's Bible" will be commemorated in an evening program. There will be a Youth Night, A California night, a pageant celebrating the 1948-52 "Advance for Christ and His Church", among other evening programs. Special events, however, will be fewer than usual to permit sufficient business sessions to care for the large amount of legislation.

The Rev. Dr. Fred B. Newell of New York is chairman of the Commission on Entertainment of the General Conference and the Rev. Dr. Aubrey S. Moore of Chicago, secretary. The chairman of the San Francisco committee is host-Bishop Donald H. Tippet.

## STRUGGLING TO KEEP FAITH

(Continued from page 2)

were no fish; only holes where the rotted net had given way. Rapidly the holes were mended and efforts made to strengthen the net. Other nets were tried but to no avail. Always it was the same.

The dawn began to break. They were sailing into port. Just as they were about to drop anchor a figure appeared on the shore. They were in shouting distance. The person on shore calls out "What luck?" and they answer "None." They do not yet realize it, but they have made contact with the risen, ever living Christ.

Now let me ask you, where did you find your faith in Christ? Most of us will answer; It began as I prayed, "Now I lay me down to sleep," and grew when I memorized verses of scripture in Sunday School; and it came to fruition when I consciously recognized Jesus as my Savior, either through the work of the church school, or through a stirring revival meeting, or through the earnest invitation of some minister or layman friend. What I am saying is your discovery of Jesus Christ as your personal Lord and Savior, and your faith in Him grew out of your experience in Christian Worship.

You can fully understand now, how apt is the ritual declaration, "The Church is of

## TO OBSERVE RURAL LIFE SUNDAY

Rural Life Sunday may be observed on either of two days: April 27, or May 18, according to Rev. Glenn F. Sanford, Department of Town and Country Work, Methodist Board of Missions. The important thing, he adds, is not the date but the emphasis this special day is given.

This day is set apart by Protestant churches for stressing the meaning of Christianity in Rural Life "for the invocation of God's blessing upon seed, the fruits of the soil, and the cultivators of the earth; for the consideration of justice for agriculture and the spiritual values of rural life."

City churches as well as those in town and country are asked to observe this special day. In some places city and country pastors exchange pulpits on Rural Life Sunday. Often a number of rural churches come together for a joint observance which features a mid-day meal and afternoon program. Agricultural organizations in the community often participate and contribute speakers. Rural plays or pageants and discussion groups are also featured.

Rural Life Sunday had its roots in the Rogation Days (the three days before Ascension). First observed in 1929, it came as a suggestion from the International Association of Agricultural Missions.

An order of service may be secured from the Department of Town and Country Work, 150 Fifth Avenue, New York 11, N. Y., at the following rates: single copy, five cents; 100 copies, \$2.60. The leaflet is prepared by the National Council of Churches of Christ in the U. S. A. Other services are available from Christian Rural Fellowship, 156 Fifth Avenue, New York City (single copy, five cents; 100 copies, \$2.50) and the Rev. J. W. Sells, 408 Wesley Memorial Bldg., Atlanta 3, Georgia, (100 for \$7.75).

Mr. Sanford urges all Methodist churches, rural and urban, to participate in this important observance.

God and will be preserved to the end of time — for the maintenance of Christian fellowship." And how important it is that this fellowship be maintained, for as you and I go out each week to live in a competitive secularism that is constantly challenging our faith and making it necessary for us to struggle to keep our faith, we need the experience of Christian worship in Sunday school and church to reconstruct our faith.

## EVANGELIST ADDRESSES INDIAN COMMUNISTS

BOMBAY—(RNS)—Talks in South India on Christianity by Dr. E. Stanley Jones, noted American missionary-evangelist, attracted large numbers of Communists, he reported.

"We had a wonderful meeting at Maramon in the Province of Travancore," Dr. Jones said. "A crowd of 30,000 turned out for my talk on Christianity and Communism instead of the usual 10,000 who ordinarily attend the Men's Night Meeting. Great interest was shown. All the Communist leaders were there."

At Alleppy, center of Communist influence, Dr. Jones drew a crowd exceeded only by the turnout which greeted Prime Minister Nehru when he spoke there.

Dr. Jones is now visiting New Delhi, Merrut and other places in North India before going to Sat Tal in May for a conference of Methodist pastors and laymen.

PAGE THREE

## NEWS AND NOTES ABOUT FACTS AND FOLKS

**D**R. R. K. BENT, of the University of Arkansas, spoke to the Methodist Men of the First Methodist Church, North Little Rock, on Wednesday, April 23.

**R**EV. Y. D. WHITEHURST, pastor at Melbourne, preached the commencement sermon for the Violet Hill High School on Sunday, April 13.

**O**FFICERS of the Methodist Men of Gardner Church, North Little Rock, elected at the April 8th meeting are: President, E. B. Jones; Vice-president, C. Robert Goss and Secretary-treasurer, E. R. Brummett.

**R**EV. D. L. DYKES, JR., pastor of Central Methodist Church, Fayetteville, will preach the baccalaureate sermon for the graduating class of Centenary College, Shreveport, La., on Sunday, May 25.

**R**EV. BARRY BAILEY, pastor of the Rison Baptist Church, was the speaker at the meeting on Monday night, April 14, at the Methodist Men's meeting of the First Methodist Church of Star City.

**O**FFICERS of the newly organized Methodist Men at Bay are: President, J. L. Barnes; First vice-president, Carl Lamberon; Second vice-president, E. J. Wiles and Secretary-treasurer, Bill Stone.

**S**PECIAL evangelistic services were held in the Methodist Church at Bonanza last week with Rev. Robert Sessions, pastor of St. Johns Church, Van Buren, doing the preaching. Bob Norvell of Ft. Smith had charge of the music.

**D**R. FRED R. HARRISON, pastor of the First Methodist Church, Texarkana, was the speaker at the Family Night service of the First Methodist Church of Malvern on Wednesday, April 16. Dr. Harrison is a former pastor of First Church, Malvern.

**T**HE FIRST METHODIST CHURCH of Clarksville is having open house in the parlor of the educational building on Wednesday, April 30, from 8 to 10 p. m. honoring Rev. and Mrs. C. Norman Guice on their Golden Wedding Anniversary.

**O**THER radio stations in Arkansas carrying the General Conference broadcasts are KVRG, Arkadelphia, on Friday April 25, May 2, and May 9 at 9:15 a. m.; KTHS, Hot Springs same dates at 4:30 p. m. and KDAS Malvern, April 25, May 2 and May 8.

**R**EV. AND MRS. A. J. BEARDEN of Ashdown write, expressing thanks to the district superintendent and preachers of the Hope District for the kindness and sympathy shown them during their recent illness and for the beautiful flowers sent them.

**A**N upholstered chair has been placed in the study of Rev. John M. McCormack, pastor of the First Methodist Church, Jonesboro, as a memorial to Rev. W. L. Oliver, long-time member of the North Arkansas Conference. The chair is the gift of Mr. and Mrs. Roland Hughes of Jonesboro.

**R**EPORTS from the General Conference in San Francisco will also be broadcast by station KBTM, Jonesboro, in addition to the stations listed in last week's *Arkansas Methodist*.

PAGE FOUR

odist. These broadcasts will begin on April 25 and will be heard at 4:45 p. m. on the Jonesboro station.

**C**OACH IVAN H. GROVE, of Hendrix College, will be the speaker at the Father-Son banquet on Thursday, April 24, at the Bauxite Community Hall, sponsored by the Men's Bible Class of the Methodist Church of Bauxite.

**R**EV. PORTER WEAVER, pastor at Weiner, has been given a month's vacation by the churches of Hickory Ridge and Weiner with all expenses paid to attend the General Conference in San Francisco. He left by plane from Memphis on April 15. Brother Weaver will also visit his mother in Denver.

**T**HE CHOIR of the Hampton Methodist Church sang the Easter cantata, "The Seven Last Words", on Sunday evening, April 6. Mrs. H. O. Splawn directed the cantata with Mrs. Searcy Harrell at the organ. Rev. George W. Warren is pastor at Hampton.

**M**ISS JESSIE MAE STELL of Delight has been secured as Adult Counselor for Youth Caravans in the Little Rock Conference. The caravan can work in five different churches this summer. Churches interested in securing a caravan should write Miss Emogene Dunlap, 326 Exchange Building, Little Rock, immediately.

**G**OOD FRIDAY services were held at the First Methodist Church, Mena, with seven ministers of the various denominations of the city speaking on the Seven Last Words of Jesus from the cross. Rev. J. E. Dunlap, pastor of the First Methodist Church, and Rev. W. C. Lewis, pastor of Mountain View Methodist Church, took part.

**A** Community Sunrise Easter service, sponsored by the Ministerial Alliance of Lake Village, was held on the lawn of the Lakeside Methodist Church which overlooks Lake Chicot. Rev. John Toppins, pastor of the Presbyterian Church, brought the message of the morning. Rev. Fred Schwendimann, pastor of the Methodist Church, read the Scripture lesson.

**T**HE FIRST METHODIST CHURCH, Morilton, had a record attendance at Church School and church services on Easter Sunday. Eighteen were received into the church on profession of faith and one by transfer, making a total of 95 additions for the Conference year. The balance of \$3,000 apportionment on Advance for Christ has been raised and all finances are up to date. Rev. H. J. Couchman is pastor.

**R**EV. WILLIAM EDWARD BISHOP, age 84, passed away at Bentonville on March 28 following a long illness. Brother Bishop, a member of the North Arkansas Conference, retired in 1927 and moved to Bentonville where he has since made his home. He served many churches in Arkansas in his 39 years of work in the active ministry. Surviving are his wife, two daughters, Mrs. Mary Sumner and Mrs. Ella Mae Brown; a son, Taylor Bishop, all of Bentonville; two brothers, two sisters, six grandchildren and nine great grandchildren. Funeral services were held on Sunday, March 30, by Rev. W. F. Cooley and Rev. William Sherman of Fayetteville.

## METHODISM'S SUCCESSFUL UEM IN WASHINGTON

(Continued from page 1)

in this revival was 6,244, or an average of 195 daily for the time the campaign ran.

In making this comparison, there is not the slightest inclination to speak disparagingly of the work of Billy Graham. He is possibly the world's greatest, living, full-time evangelist. He does a wonderful work wherever he goes. His meeting in Washington stirred that political center as it has not been stirred spiritually before.

Nevertheless, there is but one Billy Graham. Even if he remains effective for years he will be able to touch only a comparatively few of the centers of our American life. The point we would emphasize here is that we feel it is a marvelous thing that our Methodism has been led to discover an inexpensive, evangelistic approach to people, usable on a large or small scale anywhere, that is so amazingly effective in bringing people to a decision for Christ and the church.

## METHODISM AT THE CROSSROADS

(Continued from page 1)

will be right. We believe that Methodism will not yield to the temptation of every generation to be satisfied with what has been attained thus far in the many areas of the Methodist program and organization. More than one great denomination in history has lost in influence and numbers because it became content to rest on past accomplishments.

Methodism is at a crossroads. To turn directly to the right and yield to the pressure of reactionaries would spell the end to the church's place of leadership at a time when the world desperately needs for the church to be out in front. To turn to the left and yield to the visionaries who would bring in the kingdom overnight by edict and pressure would be unrealistic at a time when the world desperately needs practical solutions to its many problems. Let Methodism continue its advance, certain and sure, with a warm brotherly concern for all peoples, developing an ever widening fellowship for Christ and His Church.

## Arkansas Methodist

An Official Publication of  
The Arkansas-Louisiana Episcopal Area

PUBLISHED EVERY THURSDAY  
Except the Weeks of July 4 and December 25

SUBSCRIPTION PRICE, \$1.50 PER ANNUM  
Retired Ministers and Wives of Deceased Ministers  
of the Little Rock and North Arkansas Conference  
Complimentary

Office of Publication, 1136-1137 Donaghey Building  
LITTLE ROCK, ARKANSAS

E. T. WAYLAND  
EWING T. WAYLAND Editors and Business Mgrs.  
ANNIE WINBURNE Assistant to Editors

CONTRIBUTING EDITORS: H. O. Bolin, Mrs. Ewing  
T. Wayland, Roy I. Bagley, Forney Hutchinson.

OWNED, MANAGED AND PUBLISHED BY  
THE METHODIST CHURCHES OF  
ARKANSAS AND LOUISIANA

COMMISSIONERS:  
Little Rock Conference—J. S. M. Cannon, Charles W. Richards, O. C. Landers, Fred W. Schwendimann, Arthur Terry, Aubrey G. Walton, Burney Wilson.  
Louisiana Conference—To be named June, 1952.  
North Arkansas Conference—John Bayliss, W. Glenn Bruner, J. G. Moore, Joe Pierce, I. L. Claud, R. J. Rice, J. William Watson.

Entered as second-class matter, January 31, 1908,  
at the Post Office at Little Rock, Ark., under the Act  
of Congress of March 3, 1879.

When asking for change of address, please include  
charge key number, former address, new address  
and name of pastor.

Articles other than editorials do not necessarily  
reflect the opinions of the editors of the *Arkansas  
Methodist*.

ARKANSAS METHODIST

LOUISIANA CONFERENCE NOTES

By Bentley Sloane

Youth Work Camp At Houma

A small group of Methodist college students from the Louisiana Conference will spend a month this summer as home missionaries in South Louisiana. They will serve in and near Houma and Dulac, and will live at the MacDonell Center.

The date of this work camp is June 16 - July 12.

The students will work at light carpentry, lead recreation activities, develop worship programs, survey certain rural and bayou sections, and assist in directing children and youth groups.

Only about 15 students will be allowed to enroll for this work camp.

Board and room will be furnished. Each student will provide his or her own transportation to and from the work center at Houma.

This is a project of the Methodist Student Movement in co-operation with the MacDonell Methodist Center. All inquiries should be directed to Miss Lillian Hay, Conference Director of Student Work, Hammond, Louisiana. Miss Elizabeth Thompson, our Rural Worker, will assist in the project.

Camp Leaders To Meet

Each district camp staff will meet in May for a final coaching and planning session before the seasons opens, June 4. At this meeting the full staff will study its duties and responsibilities. Every effort is being made by the District Superintendents to secure a mature and well trained staff for our 27 camps scheduled for the coming summer. Any member of a camp staff should be qualified as follows:

1. A genuine Christian character.
2. Mentally and emotionally mature. Must be graduated from high school.
3. Knowledge of age group with which work is to be done.
4. Some experience in teaching or counseling.
5. Willingness to work with whole group.

Dean Wilson Elected

Dean John B. Wilson of Centenary College was elected president of the Louisiana College Conference at its session in March. Dean Wilson and his family are members of the Broadmoor Methodist Church where he teaches the Men's Bible Class.

Methodist Student Day is June

8, and focuses attention on the work of our Wesley Foundations. Offering on this Sunday goes to the Conference treasurer, who forwards it to the Nashville office where it is used for scholarship and loan funds.

APRIL 24, 1952

NORTH ARKANSAS CONFERENCE NOTES

By Ira A. Brumley

Leachville Area Training School

The Leachville Area Training School for the churches of that section of Jonesboro District was held April 14-16 at Leachville with three courses being offered as follows:

How to Teach in the Church School, Gaither McKelvey  
Friendship and Marriage, Lee Cate

How to Improve the Church School, Ira A. Brumley.

The following churches were represented in the school: Leachville, Manila, Delforte, Monette, Caraway, Black Oak, Lake City, and Lake View. There was an enrollment of 68 with 52 completing work for course cards. This was the first Area School that this section has ever had. There have been local schools in a number of these churches, but for the first time the area got together on a real co-operative basis in a training school.

The spirit of the school and the interest taken by the various groups leads us to believe that the program of Christian education is going to be an expanding program in this section.

Conference-Wide Youth Rally

Dr. W. McFerrin Stowe of St. Luke's Methodist Church, Oklahoma City, is to be the Inspirational Speaker for the Conference-wide Youth Rally to be held in the Hendrix College Auditorium on Friday night, May 2.

The program is to begin with a 30-minute band concert given by the Hendrix College Band, this program beginning at 7:00 p. m.

The total program is to be concluded at 9:00 p. m.

A number of groups have already made plans to have splendid delegations in this Conference-wide Rally.

The purpose of this Rally is to provide inspiration and fellowship on a Conference basis.

May Conference Bulletin

The May issue of the North

The Annual Conference opens on Tuesday, May 27 at 2:00 p. m. at the First Methodist Church, Shreveport. A number of Boards will meet the evening of May 26 and the morning of May 27.

Dr. Johnson Certified For Courses

Our new pastor at First Church, Baton Rouge, Dr. Warren Johnson, has been active in leadership training for some time. He is certified to teach the following courses:

- "The Church and Its Work"
- "Teachings of the Prophets"
- "Youth and Worship"
- "The Pastor and Christian Education"
- "Christian Beliefs"
- "The Pastor as Teacher"

PROGRAM FOR OLDER PEOPLE

Nashville, Tenn. — That the Methodist Church's program for older people is fast becoming of major interest throughout the church is shown by the results of work done in this field by the Department of the Christian Education of Adults of the General Board of Education.

In 1951 conference-wide meetings for this age group were held in 33 annual conferences, with an attendance of 1747. All the jurisdictions and 27 episcopal areas were represented. Already more than that number of annual conferences are planning for definite work with older people in 1952.

Miss Virginia Stafford of the Adult Department staff, who gives major time to work with this age group, has listed the following significant trends growing out of these meetings:

1. Many churches are providing round-the-year programs for their older people. These include fellowship, recreation, study, and opportunities for service.
2. Visiting Methodist homes for the aged and other agencies.

Arkansas Conference Bulletin should reach the pastors and church school superintendents about the time you are reading this material. This Bulletin is double size and is made in poster form so that local churches may use it as a poster to display the summer program of camps and assemblies. Please be sure that one is posted in your church.

3. Training carefully selected leaders.

The training of leaders is considered to be of great importance. Training conferences were held in Nashville in 1950 and in Chicago in 1951, and a series of seminars for pastors in the Michigan conference, dealing with down-to-earth planning for older adults in the local church, was held.

Miss Stafford reports that two observation situations are being set up for the spring of 1952. (1) about 20 persons in the North Central region will participate in a three-day period of laboratory work with older adults in a church in the Wisconsin conference and (2) approximately 35 pastors, directors of Christian education and others will take in a seminar in connection with the Texas conference (SCJ) older adult camp.

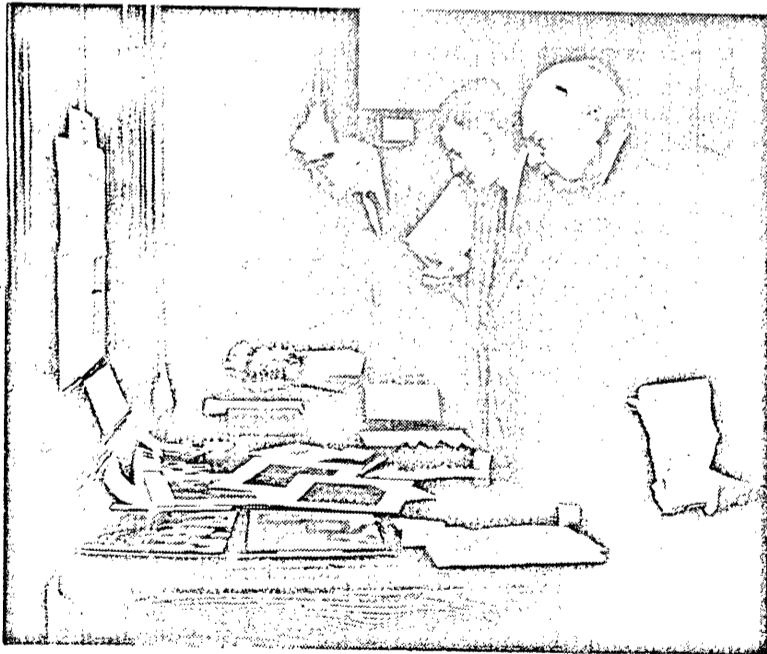
The Adult Department maintains relationships with various Methodist and other denominational agencies concerned with older persons, and the National Gerontological Society. Miss Stafford was a delegate to the National Conference on Aging in Washington, D. C., in 1950 and the International Gerontological Congress at St. Louis in 1951.

Work with older people in Methodist local churches, since it began in 1944, has been summarized by Miss Stafford as follows: "The church is gradually becoming aware of its responsibility and its opportunity to take advantage of the gold mine of ability, loyalty, interest, and consecration of its older members and constituents."

AT THE BOARD OF EDUCATION MEETING

Interested examiners of the exhibit of Church School literature and of audio-visual resources are Dr. Ira A. Brumley (left), North Arkansas Conference Secretary of Education, Rev. Ewing T.

Wayland, one of the editors of the Arkansas Methodist and The Louisiana Methodist and Dr. Frank D. Slutz, educator of Dayton, Ohio.





# Little Rock Conference Treasurer's Report



FOR PERIOD JUNE 15, 1951, THROUGH APRIL 10, 1952

Charge & Church	Bishops Fund	Conference Claimants	Benevolences	4th Sunday Offerings	Dist. Supt. Salary Fund	Charge & Church	Bishops Fund	Conference Claimants	Benevolences	4th Sunday Offerings	Dist. Supt. Salary Fund
ARKADELPHIA DISTRICT						MINIMUM SALARY FUND—CHURCH:					
AMITY CT.						First Church, Arkadelphia \$100.00, Bethlehem \$6.00, Manchester \$14.00, Rock Springs \$3.00, Antoine \$8.00, Delight \$34.00, Gurdon \$66.66, Whelen Springs \$3.00, First Church, Hot Springs \$104.50, Grand Avenue \$96.00, Pullman Heights \$84.00, Keith Memorial \$39.00, First Church, Malvern \$112.00, Mt. Ida \$55.00, Norman \$2.50, Oden \$3.00, Murfreesboro \$48.00, Sardis \$28.00, Sparkman \$44.00, Congo \$3.00, New Hope \$6.00.					
Amity	\$ 32.00	\$ 135.00	\$ 125.00	\$	\$ 90.00	TOTAL					\$859.66
1st. CH.—Arkadelphia	87.50	350.00		1000.00	375.00	ADVANCE FOR CHRIST:					
ARKADELPHIA CT.						First Church, Arkadelphia \$100.00, Bismarck \$23.00, Christian Home \$7.36, Oma \$6.00, Bethlehem \$104.00, Rock Springs \$10.00, Delight \$141.28, Fountain Lake \$25.00, Friendship \$10.00, Midway \$4.00, Social Hill \$8.00, Glenwood \$21.00, Grants Chapel \$10.00, Gurdon \$325.00, Wheelen Springs \$6.00, First Church, Hot Springs \$1109.52, Grand Avenue \$50.00, Oaklawn \$100.00, Pullman Heights \$260.00, Mt. Pine \$25.00, First Church, Malvern \$475.00, Keith Memorial \$160.00, Mt. Ida \$50.00, Murfreesboro Church \$100.00, Center Grove \$31.25, Okolona \$45.00, Trinity \$31.25, Piney Grove \$8.00, Congo \$5.00, Point View \$2.50.					
Harts Chapel	3.00	12.00		30.00	15.00	TOTAL					\$3193.16
Hollywood	7.00	32.00		35.00	40.00	WESLEY FOUNDATION FUND:					
Mt. Pisgah	2.00	8.00		25.00	10.00	First Church, Arkadelphia \$100.00, Bethlehem \$7.00, Dalark \$6.00, Rock Springs \$3.00, Gurdon \$100.00, First Church, Malvern \$250.00, Murfreesboro \$35.00.					
Mt. Zion	2.00	8.00		25.00	10.00	TOTAL					\$501.00
Smyrna	4.00	16.00		35.00	11.00	AREA FUND:					
Total	18.00	76.00		150.00	86.00	First Church, Arkadelphia \$15.00, Gurdon \$10.00, First Church, Hot Springs \$18.00, Grand Avenue \$8.00, Oaklawn \$7.00, Pullman Heights \$7.00, First Church, Malvern \$15.00, Keith Memorial \$3.00, Mt. Ida \$5.00, Murfreesboro \$8.00, Sardis \$3.00, Sparkman \$4.00, Congo \$3.00, New Hope \$3.00.					
BISMARCK CT.						TOTAL					\$110.00
Bismarck	9.00	36.00	27.00	3.00	45.00	RACE RELATIONS OFFERINGS (PHILANDER SMITH COLLEGE):					
Christian Home		1.00		11.00	2.00	First Church, Arkadelphia \$15.00, Arkadelphia Ct. \$7.35, Bethlehem \$3.00, Gurdon \$18.00, First Church, Hot Springs \$124.00, Grand Avenue \$40.00, Tigert \$1.00, Murfreesboro \$8.00, Magnet Cove \$10.61, Sardis \$13.00.					
Oma	2.00	4.00		7.00	5.00	TOTAL					\$279.96
Total	11.00	41.00	27.00	21.00	52.00	METHODIST STUDENT DAY OFFERINGS:					
DALARK CT.						First Methodist Church, Arkadelphia					\$15.00
Bethlehem	6.00	33.00	16.00		30.00	KANSAS CITY FLOOD RELIEF:					
Dalark	8.00	53.00		50.00	48.00	Keith Memorial, Malvern \$16.50, Sparkman Church \$17.00.					
Manchester	15.00	92.00		168.00	63.00	TOTAL					\$33.50
Rock Springs	5.00	15.00	27.00		20.00	WORLD-WIDE COMMUNION OFFERING:					
Total	34.00	193.00	43.00	218.00	161.00	Amity \$17.28, First Church, Arkadelphia \$65.90, Harts Chapel \$6.00, Bismarck \$2.45, Delight \$26.53, Gardner \$8.05, Morning Star \$2.25, First Church, Hot Springs \$104.15, Grand Avenue \$58.00, Pullman Heights \$29.12, Tigert \$5.60, Keith Memorial \$10.00, Mt. Ida \$16.70, Murfreesboro \$20.00, Okolona \$19.00, Butterfield \$10.25, Magnet Cove \$4.00, Rockport \$7.25, Shorewood Hills \$13.00, Sardis \$11.50, Sparkman \$26.85, First Church, Malvern \$95.00.					
DELIGHT CT.						TOTAL					\$549.28
Antoine	7.00	22.00	15.00	5.00	20.00	WEEK OF DEDICATION OFFERINGS:					
Delight	30.00	184.00	210.00		167.00	Amity \$9.00, First Church, Arkadelphia \$100.00, Harts Chapel 75c, Hollywood \$3.20, Mt. Pisgah \$1.05, Mt. Zion \$1.49, Smyrna \$2.00, Bismarck \$5.50, Bethlehem \$10.00, Dalark \$5.00, Friendship \$11.75, Morning Star 50c, Gurdon \$75.00, Grand Avenue, Hot Springs \$119.48, Pullman Heights \$46.00, First Church, Malvern \$52.55, Mt. Ida \$10.00, Murfreesboro \$25.00, Center Grove \$2.00, Okolona \$10.00, Trinity \$2.00, Piney Grove \$6.00, Butterfield \$2.25, Magnet Cove \$15.00, Shorewood Hills \$22.16, Ebenezer \$9.00.					
Saline	3.00	12.00	30.00		18.00	TOTAL					\$546.68
Total	40.00	218.00	255.00	5.00	205.00	GRAND TOTAL FOR DISTRICT					\$30,559.46
FOUNTAIN LAKE FRIENDSHIP CT.						CAMDEN DISTRICT					
Friendship	4.00	20.00	50.00		25.00	BEARDEN					
L'eau Fraiss	3.00	13.00		35.00	17.00	Bearden	\$ 34.12	\$ 228.00	\$	\$ 161.25	\$ 194.94
Midway	4.00	10.00		23.00	16.00	Lakeside	2.63	15.00	5.00	5.00	15.00
Rolla	1.00	3.00	7.00		4.00	Total	36.75	243.00	5.00	166.25	209.94
Social Hill	4.00	16.00		25.00	20.00	BRADLEY CHARGE					
Total	16.00	62.00	57.00	83.00	82.00	Bradley	18.50	114.50		100.00	105.00
GARDNER-MORNING STAR						BUCKNER CT.					
Gardner	6.00	30.00		18.75	37.50	Buckner	12.00	46.00		48.09	50.00
Morning Star		15.00			10.00	Kilgore	3.00	20.00			15.00
Total	6.00	45.00		18.75	47.50	Mt. Vernon	6.00	32.00	12.00		25.00
GLENWOOD CT.						Oak Grove	5.00	25.00	5.00		20.00
Glenwood	16.00	90.00		90.00	90.00	Sardis	6.00	32.00			26.00
Grants Chapel	.65	3.75			3.75	Shiloh	2.00	12.00		12.00	12.00
Total	16.65	93.75		90.00	93.75	Total	34.00	167.00	17.00	60.09	148.00
GURDON STATION						FIRST CHURCH—Camden	126.00	1008.00	3650.00		660.00
Gurdon	70.00	560.00	844.15		333.33	FAIRVIEW—CAMDEN	48.00	378.00	375.00		270.00
Wheelen Springs	6.00	25.00	50.00		10.00	CHIDESTER CT.					
Total	76.00	585.00	894.15		343.33	Missouri	4.00	16.00	25.00		20.00
HOT SPRINGS CHURCHES						Red Hill	2.00	9.00	9.00		10.00
First Church	96.29	731.50	2454.15		550.00	Rocky Hill		4.00	6.00		10.00
Grand Avenue	84.00	672.00	800.00	3.00	400.00	Rushing Memorial	36.00	125.00	230.00		105.00
Oaklawn	46.00	429.00		100.00	247.50	Shady Grove		4.00			8.00
Pullman Heights	74.00	294.00		535.00	350.00	Silver Springs	5.00	19.00	60.00		29.00
Tigert Memorial			15.00		30.00	Total	47.00	177.00	330.00		182.00
HOT SPRINGS CT.						COLUMBIA CT.					
Gum Springs	1.00	7.00	20.00		9.00	Harmony	7.87	23.00		35.00	32.00
Mt. Pine	7.00	32.00	50.00		40.00	New Hope	7.87	45.00		49.16	32.31
New Salem	5.00	7.00		10.00	7.00	Philadelphia	9.00	30.00	20.00	12.00	35.00
Total	13.00	46.00	70.00	10.00	56.00	Sharman	8.75	50.00	25.00	42.00	50.00
FIRST CH.—MALVERN	98.00	784.00	1500.00		422.00	Total	33.49	148.00	45.00	138.16	149.31
KEITH MEM.—Malvern	33.75	234.00	112.50		195.00	CENTENNIAL					
MOUNT IDA CHARGE						Centennial	13.00	75.00		75.00	75.00
Mt. Ida	48.13	330.00	250.00		275.00	Ebenezer	3.00	15.00		25.00	15.00
Norman	2.20	8.75	5.00		12.50	Hi-Bank	2.00	10.00	10.00		10.00
Oden	2.60	4.50			10.00	Lisbon	6.00	35.00		26.00	35.00
Total	52.93	343.25	255.00		297.50	Quinn	4.00	24.00		40.00	24.00
MURFREESBORO CHG.	42.00	220.00	375.00		200.00	Wesley	6.00	35.00	25.00		35.00
MURFREESBORO CT.	.94	4.03		1.30	5.71	Total	34.00	194.00	35.00	166.00	194.00
OKOLONA CT.						DUMAS MEMORIAL					
Beirne	3.50	20.00	33.00		20.00	Calion	15.75	90.00	50.00		90.00
Center Grove	6.00	35.00	83.34		35.00	Dumas Memorial	17.75	100.00	100.00		100.00
Okolona	17.00	100.00	100.00		100.00	Total	33.50	190.00	150.00	50.00	190.00
Trinity	7.00	40.00	95.00		40.00	FIRST CHURCH, EL DORADO					
Total	33.50	195.00	311.34		195.00	131.00	1050.00	1000.00	3100.00		750.00
PINEY GROVE						VANTREASE MEMORIAL					
Rockport CT.						Vantrease	67.00	532.00	450.00		380.00
Butterfield	4.00	18.00		35.00	20.00	EMERSON CT.					
Magnet Cove	5.00	27.00	34.00	6.00	30.00	Atlanta	5.00	12.30	6.75	26.15	23.00
Rockport	11.00	54.00			60.00	Christie Chapel	3.00	11.00	10.00		10.00
Total	20.00	99.00	34.00	41.00	110.00						
SHOREWOOD HILLS	12.00	55.00		30.00	69.00						
SPARKMAN-SARDIS											
Sardis	24.00	193.00	313.00		138.00						
Sparkman	39.00	311.00	412.00		222.00						
Total	63.00	504.00	725.00		360.00						
TRASKWOOD CT.											
Congo	4.00	25.00	27.00	20.00	25.00						
Ebenezer	5.00	30.00		40.00	40.00						
New Hope	6.00	20.00		20.00	20.00						
Pt. View	2.00	10.00	10.50	11.50	10.50						
Traskwood		28.00		10.00	50.00						
Total	17.00	113.00	37.50	101.50	145.50						
DISTRICT TOTALS	\$1058.06	\$6629.53	\$8165.64	\$2413.23	\$5289.79						
GEN'L ADMINISTRATION AND JURISDICTIONAL CONF. EXPENSE FUND:											
First Church, Arkadelphia \$65.00, Harts Chapel \$4.00, Hollywood \$10.00, Mt. Pisgah \$4.00, Mt. Zion \$4.00, Smyrna \$4.00, Bismarck \$3.00, Oma \$2.00, Bethlehem \$5.00, Manchester \$10.00, Rock Springs \$5.00, Antoine \$6.00, Delight \$12.00, Fountain Lake \$10.00, Friendship \$6.00, L'eau Fraiss \$4.00, Midway \$2.00, Social Hill \$4.00, Gardner \$6.00, Glenwood \$19.00, Gurdon \$37.50, First Church, Hot Springs \$137.50, Grand Avenue \$30.00, Oaklawn \$25.00, Pullman Heights \$30.00, Gum Springs \$1.00, Mt. Pine \$8.00, New Salem \$4.00, First Church, Malvern \$60.00, Keith Memorial \$18.00, Mt. Ida \$15.00, Murfreesboro \$25.00, Center Grove \$6.22, Okolona \$15.00, Trinity \$6.00, Butterfield \$6.00, Magnet Cove \$8.00, Rockport \$8.00, Shorewood Hills \$5.00, Sardis \$19.00, Sparkman \$27.00, Congo \$5.00, New Hope \$5.00, Point Cedar \$2.00, Traskwood \$7.00.											
TOTAL											\$695.22
MINIMUM SALARY FUND—PASTOR:											
First Church, Arkadelphia \$50.00, Gurdon \$20.00, Grand Avenue \$24.00, Pullman Heights \$42.00, Keith Memorial \$26.00, Mt. Ida \$15.25, Murfreesboro \$12.00, New Hope \$3.00, First Church, Hot Springs \$27.50.											
TOTAL											\$219.75

(Continued on page 7)

# LITTLE ROCK CONFERENCE TREASURER'S REPORT

(Continued from page 6)

Charge & Church	Bishops Fund	Conference Claimants	Benevolences	4th Sunday Offerings	Dist. Supt. Salary Fund
Emerson	5.25	21.00			
Ware's Chapel	2.00	7.00		50.00	30.00
Total	15.25	51.30		12.00	10.00
GARLAND	19.00	99.00	16.75	88.15	73.00
HARMONY GROVE CT.				170.00	110.00
Buena Vista	10.50	49.50			
Harmony Grove	11.25	74.25		45.00	45.00
Westside	10.40	73.60		60.00	67.50
Total	32.15	197.35		150.00	172.50
HOLLY SPRINGS CT.					
Holly Springs	9.75	50.25		56.25	56.25
Mt. Carmel	2.25	10.50		18.75	14.25
Mt. Olivet	9.00	35.25	12.50	25.00	39.75
Total	21.00	96.00	12.50	100.00	110.25
JUNCTION CITY CT.					
Beech Grove	1.00	9.00	15.00		8.00
Blanchard Springs	1.00	9.00	15.00		8.00
Junction City	31.50	216.00	90.00	45.00	180.00
Olive Branch	3.00	15.00	15.00		12.00
Total	36.50	249.00	135.00	45.00	208.00
LEWISVILLE					
Bethel	1.00	6.00		25.00	10.00
Lewisville	52.50	420.00	480.00	35.00	375.00
Old Lewisville	2.00	8.00		60.00	15.00
Total	55.50	434.00	480.00	60.00	400.00
LOUANN CT.					
Liberty	8.00	37.50		33.75	33.75
Louann	18.00	30.00		25.50	50.00
Silver Hill	11.00	66.00		50.00	60.00
Total	37.00	133.50	50.00	59.25	143.75
FIRST CH.-MAGNOLIA	115.00	924.00	50.00	2750.00	660.00
JACKSON ST.-MAGNOLIA	45.93	341.25	300.00		262.50
MAGNOLIA CT.					
Greer's Chapel	1.00	4.00		6.00	5.00
Mt. Pisgah	1.00	4.00		6.00	5.00
New Era	1.00	4.00		6.00	5.00
New Hope	1.00	4.00		6.00	5.00
Wingfield	2.00	6.00		9.00	7.50
Total	6.00	22.00		33.00	27.50
MARYSVILLE-FREDONIA					
Bethel	6.66	45.00	8.75	7.50	37.50
Fredonia	17.50	90.00	131.25		100.00
Friendship	7.00	36.00	32.00		30.00
Marysville	13.25	90.00	42.50	25.00	75.00
Total	44.41	261.00	214.50	32.50	242.50
NORPHLET	37.65	236.50	77.77	97.23	215.00
PARKERS CHAPEL					
Pleasant Grove	33.00	242.00	130.00	110.00	186.00
Total	20.25	151.50		60.00	116.25
PRINCETON CT.	53.25	393.50	130.00	170.00	302.25
Princeton	3.00	16.00	24.00	5.00	27.00
Macedonia	4.00	13.00	50.00		35.00
Providence	2.00	9.00	30.00		13.00
Waverly	2.00	9.00	28.00		13.00
Zion	2.00	8.00	18.00		13.00
Total	13.00	55.00	150.00	5.00	98.00
SMACKOVER	74.00	539.00	605.00	393.75	195.00
TAMPS		200.00	200.00		
STEPHENS-MT. PROSPECT					
Stephens	70.00	280.00		300.00	400.00
AYLOR CT.					
Pine Grove	2.00	10.00		20.50	10.00
Taylor	22.00	97.50		90.00	97.50
Welcome	8.55	48.75		45.00	60.95
Total	32.55	156.25		155.50	168.46
MOTHY-MCNEIL					
Timothy	10.50	42.00	50.00	50.00	60.00
CLAGE CT.					
Ebenezer	6.00	33.00	61.00	30.00	30.00
Lydesdale	4.00	22.00	32.00	8.20	20.00
illage	21.00	132.00	95.66	8.20	120.00
Total	31.00	187.00	188.66		170.00
LDO CHARGE					
aldo	47.25	351.00		450.00	135.00
illiesville	14.00	104.00		83.00	80.00
Total	61.25	455.00		533.00	215.00
DISTRICT TOTALS	\$1420.18	\$9554.15	\$8062.18	\$9192.33	\$7865.71

ADMINISTRATION AND JURISDICTIONAL CONF. EXPENSE FUND:  
 Bearden \$18.75, Lakeside Extension \$2.50, Buckner \$3.00, Kilgore Lodge \$1.00,  
 den \$2.00, Oak Grove \$1.00, Sardis \$2.00, Shiloh \$1.00, First Church,  
 orial \$15.00, Fairview, Camden \$32.00, Missouri \$2.00, Red Hill \$1.00, Rushing  
 mon \$5.00, Centennial \$2.00, New Hope \$5.00, Philadelphia \$5.00,  
 Extension \$3.00, Wesley \$2.00, Ebenezer \$2.00, HiBank \$1.00, Lisbon \$3.00,  
 Church, El Dorado \$155.00, Vantrease Memorial \$38.00, Atlanta \$2.00,  
 the Chapel \$2.00, Emerson \$5.00, Wares Chapel \$1.00, Garland \$10.00, Buena  
 \$2.50, Harmony Grove \$3.75, Westside \$5.00, Holly Springs \$3.75, Mt. Carmel  
 Mt. Olivet \$4.00, Beech Grove \$3.00, Blanchard Springs \$3.00, Junction City  
 \$5.00, First Church, Lewisville \$30.00, Liberty \$5.00, Louann \$5.00, Silver  
 nia \$10.00, Friendship \$5.00, Marysville \$10.00, Norphlet \$20.00, Parkers  
 \$1.00, Waverly \$1.00, Zion \$1.00, Smackover \$65.00, Stephens \$25.00,  
 \$8.00, Welcome \$5.25, Timothy \$5.00, Ebenezer \$4.00, Lydesdale \$2.00,  
 \$4.00, Waldo \$20.00, Williesville \$10.00.

TOTAL SALARY FUND—PASTOR: \$972.00  
 Bearden \$19.50, Lakeside Extension \$75c, First Church, Camden \$72.00,  
 w, Camden \$36.00, Silver Springs \$15.00, Bethel \$2.00, Vantrease \$38.00,  
 on Ct. \$7.50, Junction City \$26.75, Bethel \$1.00, Lewisville \$20.00, Old  
 ile \$1.00, Louann \$21.00, First Church, Magnolia \$33.00, Jackson Street,  
 ia \$32.50, Magnolia Ct. \$7.50, Norphlet \$21.45, Stamps \$39.00, Village  
 Waldo \$27.00, Williesville \$8.00.

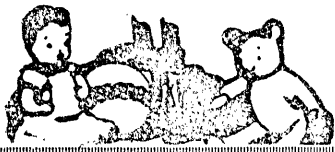
TOTAL SALARY FUND—CHURCH: \$440.95  
 Bearden \$39.00, Lakeside Extension \$1.50, First Church, Camden \$144.00,  
 w, Camden \$54.00, Missouri \$4.00, Rushing Memorial \$41.00, Silver  
 armony Grove \$13.50, Westside \$12.00, Beech Grove \$2.00, Blanchard  
 \$2.00, Junction City \$36.00, Olive Branch \$4.00, Bethel \$2.00, Lewisville  
 id Lewisville \$2.00, Liberty \$10.00, Louann \$20.00, Silver Hill \$12.00, First  
 Magnolia, \$132.00, Jackson Street, Magnolia \$52.50, Bethel \$7.50,

24, 1952

Charge & Church	Bishops Fund	Conference Claimants	Benevolences	4th Sunday Offerings	Dist. Supt. Salary Fund
Fredonia \$20.00, Friendship \$8.00, Marysville \$15.00, Norphlet \$43.00, Parkers Chapel \$37.00, Smackover \$84.00, Stephens \$80.00, Ebenezer \$8.00, Lydesdale \$4.00, Village \$24.00, Waldo \$54.00, Williesville \$16.00.					
TOTAL					
ADVANCE FOR CHRIST:					
Vantrease Memorial \$72.55, Buena Vista \$25.00, Harmony Grove \$25.00, Westside \$50.00, Lewisville Church \$191.00, First Church, Magnolia \$500.00, Norphlet \$20.50, Parkers Chapel \$200.00, Stamps \$150.00, Stephens \$273.00, Waldo \$34.35.					
TOTAL					
AREA FUND:					
Bearden \$3.00, Lakeside Extension \$1.00, Buckner \$1.00, Mt. Vernon \$1.00, First Church, Camden \$15.00, Fairview, Camden \$4.00, Rushing Memorial \$3.00, Harmony \$1.00, New Hope \$1.00, Philadelphia \$1.00, Sharmon \$1.00, Centennial \$1.00, Ebenezer \$1.00, Hi-Bank \$1.00, Calion \$2.00, Dumas Memorial \$1.50, First Church, El Dorado \$15.00, Vantrease \$5.00, Atlanta \$1.00, Christie Chapel \$1.00, Beech Grove \$1.00, Westside \$1.00, Garland \$2.00, Buena Vista \$1.00, Harmony Grove \$1.00, Louann \$1.00, Silver Hill \$1.00, First Church, Magnolia \$5.00, Jackson Street \$5.00, Greer's Chapel \$1.00, Mt. Pisgah \$1.00, New Era \$1.00, Marysville \$1.00, Wingfield \$1.00, Bethel \$50c, Fredonia \$1.00, Friendship \$50c, Princeton \$1.00, Smackover \$8.00, Parkers Chapel \$3.00, Pleasant Grove \$2.00, Timothy \$1.00, Ebenezer \$1.00, Lydesdale \$1.00, Waldo \$5.00.					
TOTAL					
RACE RELATIONS (PHILANDER SMITH COLLEGE):					
Buckner \$5.14, First Church, Camden \$75.00, Fairview, Camden \$30.00, Calion \$15.00, Dumas Memorial \$12.50, First Church, El Dorado \$304.67, Vantrease \$26.87, Junction City \$10.00, Marysville \$4.00, Princeton \$5.00, Stamps \$19.51, Timothy \$6.50, Lydesdale \$16.69.					
TOTAL					
KANSAS CITY FLOOD RELIEF:					
Dumas Memorial \$10.00, Calion \$10.00.					
TOTAL					
WORLD-WIDE COMMUNION OFFERING:					
Bearden \$17.15, First Church, Camden \$120.42, Rushing Memorial \$3.00, Columbia Ct. \$17.40, Calion \$10.00, Vantrease Memorial \$47.10, Holly Springs \$6.00, Junction City \$7.10, Lewisville \$20.00, Liberty \$3.20, Jackson Street, Magnolia \$31.40, Bethel \$8.30, Fredonia \$13.25, Marysville \$15.22, Norphlet \$18.61, Parkers Chapel \$56.55, Pleasant Grove \$11.15, Macedonia \$20.00, Smackover \$46.25, Stamps \$51.15, Stephens \$63.50, Taylor \$10.00, Waldo \$13.55.					
TOTAL					
WEEK OF DEDICATION OFFERINGS:					
Buckner Ct. \$29.69, First Church, Camden \$981.00, Fairview, Camden \$135.93, Rushing Memorial \$100.00, New Hope \$7.33, Philadelphia \$11.00, Sharmon \$3.00, Centennial \$7.00, Calion \$81.35, Dumas Memorial \$25.00, First Church, El Dorado \$1800.00, Vantrease Memorial \$85.80, Harmony Grove \$15.00, Westside \$4.00, Holly Springs \$25.00, Junction City \$19.53, Liberty \$3.25, Louann \$7.15, Silver Hill \$5.30, First Church, Magnolia \$410.95, Jackson Street \$76.85, Bethel \$14.11, Fredonia \$13.00, Friendship \$12.00, Norphlet \$100.00, Parkers Chapel \$60.00, Pleasant Grove \$20.00, Princeton \$3.18, Macedonia \$4.00, Providence \$3.22, Waverly \$2.65, Zion \$6.65, Stamps \$47.40, Taylor and Welcome churches \$12.00, Timothy \$13.35, Ebenezer \$7.00, Williesville \$12.00.					
TOTAL					
GRAND TOTAL FOR DISTRICT					

Charge & Church	Bishops Fund	Conference Claimants	Benevolences	4th Sunday Offerings	Dist. Supt. Salary Fund
AUSTIN CT.					
Concord					
Mt. Tabor	\$ 9.34	\$ 53.60	\$ 65.00	\$ 53.60	\$ 53.60
Mt. Zion	9.34	53.60		66.00	53.60
South Bend	7.00	40.40		35.00	40.00
Total	4.09	23.50		35.00	23.50
BAUXITE	29.77	171.10	65.00	136.00	170.70
BENTON	63.00	504.00	300.00	360.00	500.00
BETHLEHEM CT.	88.00	525.00	1500.00		
Bethlehem					
Providence	4.00	5.00			
Total	2.00	20.00	7.00	18.00	23.00
BRYANT-SARDIS	6.00	25.00	23.00	8.00	25.00
Bryant				26.00	48.00
Sardis	15.76	90.00			
Total	15.75	90.00			
CARLISLE STATION	31.51	180.00	80.00	80.00	90.00
CARLISLE CT.	70.00	560.00	700.00	80.00	180.00
Hamilton					
Shiloh	7.00	38.00	3.00		400.00
Zion	2.00				
Total	3.00				38.00
DES ARC	12.00	13.00			13.00
DEVALLS BLUFF CT.		51.00	3.00	15.00	13.00
DeValls Bluff				15.00	64.00
Brasfield	12.60			56.97	
New Bethel		72.00			
Pepper's Lake				33.00	72.00
Total					19.00
DOUGLASSVILLE	12.60	72.00			15.00
GEYER SPRINGS	19.23	143.00		33.00	5.00
HAZEN	26.25	38.50	100.00		111.00
HICKORY PLAINS CT.	63.00	100.00	100.00		110.00
Cross Roads					35.00
Hebron	2.00	4.50			100.00
Hickory Plains	2.00	10.00			
Circuit	1.00	3.00			
Total	5.00	5.00	4.00	4.00	5.00
LITTLE ROCK CHURCHES					
ASBURY	131.00	1050.00	3575.00		610.00
CAPITOL VIEW	70.00	252.00	250.00		333.25
FIRST CHURCH	252.00	2016.00	4200.00	225.00	675.00
FOREST PARK	15.00	25.00	25.00		50.00
HENDERSON	79.00	630.00			450.00
HIGHLAND	87.50	700.00	1200.00	500.00	500.00
HUNTER	70.00	560.00	660.00		400.00
OAK FOREST	42.00	250.00	65.21		200.00
PULASKI HEIGHTS	94.50	756.00	2250.00		660.00
SCOTT STREET	59.07	472.50	300.00		337.50
28th ST. CHURCH	57.50	429.00	400.00		275.00
WINFIELD	217.00	1157.33	5000.00		840.00
LITTLE ROCK CT.					
Bethel	6.00	24.50			
Pleasant Hill	1.00	4.00			
Walnut Grove	3.00	12.00	5.00	45.00	30.00
Total	10.00	40.50	15.00		5.00
LONOKE-EAGLE					
Lonoke	33.00	297.00	167.50		185.00

(Continued on page 14)



# THE CHILDREN'S PAGE

ANNIE WINBURNE, Editor



## IN STORYLAND

### THE BEAR THAT NEEDED A SPANKING

By T. Chambers Atkinson

Last summer we camped out in one of the big national parks. Deer and squirrels and chipmunks came to the table and ate with us. Each night bears raided the camp-ground and had a picnic overturning garbage-cans.

Early one afternoon, while all the campers were out hiking, a bear caught the odor of bacon in a nice big sedan. Now bears are so fond of bacon and ham that every wise camper hangs his meat on a wire high above the ground and far from the trees, so that bears cannot reach it by climbing. But these campers were careless, so Bruin made the most of the opportunity.

Oh, the doors were locked and the windows were closed. Yes, indeed; But doors and windows will not stop a bear when he smells bacon. He climbed up on the hood (his footprints told the story) and thrust his long, sharp claws deep into the fabric that covered the top. Then he just pushed his paws apart, as we do when we take a breast-stroke in swimming, and something had to give. That top opened up like a paper bag.

After that we were not very enthusiastic about bears. They were the clowns of the forest, there was no doubt about that, but no one ever knew just when a bear might carry his fun too far. Rangers who live in the national parks throughout the year have some remarkable experiences with the bears. It was a ranger who told us about Old Brownie. Old Brownie was one of the clowns who had a habit of bringing home someone's bacon.

Old Brownie was not entirely satisfied with stealing supplies from tender-foot campers. He decided to go in for crime in a big way, and in time he got what was coming to him. One night he tore the shingles off the kitchen roof at the lodge and helped himself to several dozen fresh pies. He ate most of them and sat on the others.

That gave Brownie a bad reputation. They knew it was Brownie, because after entering he could not get out. When the cook opened the door at day-break Brownie bumped into him on the way out, and not at all gently.

PAGE EIGHT



### OUR WALKS

*When Jane and I go for a walk  
In lovely Springtime weather,  
We always have a happy time  
Just being together.*

*I sometimes take Jane's cart along,  
She can't keep up with me,  
She really cannot walk at all  
For she's my doll, you see.*

*I like to think she's happy  
And loves the Springtime, too,  
And that she likes these walks of ours  
The same way that I do.—A.E.W.*

Not long afterward Brownie was caught raiding a camp. The rangers actually caught him this time, roped him like a cow. Then they loaded him into a truck, drove several miles down the mountainside and drew off to the side of the road. Before they turned Old Brownie loose they gave him the hardest spanking any trouble-maker ever received. And they promised him that if he made more trouble they would present him to some zoo—which is the rangers' way of sentencing a national park bear to "life in the pen."

An entire year passed before Old Brownie appeared near the camps. And to this day he will not even accept a lump of sugar from a camper. — Girls' World

## JUST FOR FUN

A minister relates the following experience: After the service one Sunday morning he was approached by an old lady who expressed great appreciation over his discourse. "You can never know what your service meant to me," she said, "Why it was just like water to a drowning man."

"Do you know any reliable rule for estimating the cost of living?"  
"Yes. Take your income, whatever that may be, and add 25%."

"You don't seem to know which side your bread is butter-

## IN THE WORLD OF BOYS AND GIRLS

### THREE LITTLE PANSIES

*Three little pansies  
Bloomed in a row,  
Looking up brightly,  
Faces aglow.*

*The yellow one said to  
The purple one near,  
"I'm feeling so happy  
And full of good cheer."*

*The purple one said to  
The blue one near by,  
"I'm sure you're not feeling  
As bouncy as I."*

*The blue one laughed gaily  
And said to the two,  
"Do you know what I'm wishing  
And longing to do?"*

*"Have somebody pick me  
And take me today  
To a child who is sick and  
Whom I could make gay."  
—Marjorie A. Anderson  
in The Christian Advocate*

### THE LOST KITTY

By L. E. Thompson  
*I'm lonesome for my pussy cat,  
She's been so long away,  
Her dish of milk for breakfast  
Has not been touched today.*

*Here's Daddy splashing from the  
barn  
Across the muddy ground;  
His face has such a big smile,  
I think my kitty's found.*

*You'd never guess where pussy is,  
She's hidden far away  
With four black baby kittens;  
Their bed is in the hay.  
—In the United Church Observer*

ed on."  
"Who cares? I eat both sides"  
— Arizona Kitty Kat.

Guide: "This, sir, is the leaning tower of Pisa."

Tourist: "Pisa! Let me think. No, that doesn't sound like the contractor's name who built my garage, but it looks like his work."

"Your methods of cultivation are hopelessly out of date", said the agricultural student to the old farmer. "Why, I'd be astonished if you got even ten pounds of apples from that tree."  
"So would I," said the farmer, "it's a pear tree."

ARKANSAS METHODIST

## Bishop Corson Heads Council Of Bishops

San Francisco — Bishop Fred Pierce Corson, of Philadelphia, was elected president of the council of Bishops of The Methodist Church in a session held here prior to the opening of the denomination's quadrennial General Conference, April 23.

Elected to the episcopacy in 1944 from the presidency of Dickinson College, Carlisle Penna., this is the first time that a bishop of but eight years tenure has held this top office.

Other officers elected were Bishop William C. Martin, vice president of Dallas, Texas; Bishop G. Bromley Oxnam, secretary, of New York, N. Y.; and to serve with the three officers on the Executive Committee were Bishop Willis J. King, of Monrovia, Liberia, West Africa; and Bishop Costen J. Harrell, of Charlotte, N. C.



BISHOP FRED P. CORSON

# Methodist CHILDREN'S Home

## REPORT FOR MARCH, 1952

### ADDITIONAL CHRISTMAS OFFERINGS RECEIVED

We publish the second report of the Christmas Offering to the Methodist Children's Home. As the report indicates it is the largest in the history of the Home, for which the Director, the entire Staff and the children are deeply grateful.—T. T. McNeal

### ARKADELPHIA DISTRICT

Antioch, (formerly included in Delight)	\$ 6.00
Hot Springs, Grand Ave. Ch.	17.00
Total for Grand Ave.—\$241.85	
Boto	5.00
Piney Grove	5.00
Total for Piney Grove—\$27.05	
Point View	6.50

Total for Arkadelphia District \$ 33.50  
\$ 4,598.16

### CAMDEN DISTRICT

Lakeside	\$ 7.00
Bradley	50.00
New Hope	6.00
Centennial	15.00
Ebenezer	5.05
Taylor	10.00
El Dorado, First Church	30.00
Total for El Dorado 1st Ch.—\$3758.87	

Total for Camden District \$ 123.05  
\$ 9,540.63

### HOPE DISTRICT

Holly Grove	\$ 15.91
Midway	27.63
Hope	20.00
Total for Hope—\$1,395.53	
Mena	20.00
Total for Mena	260.00
Texarkana, First Church	10.00
Total for Texarkana First Church—\$1,861.86	
Few Memorial	20.00
Sardis	3.26

Total for Hope District \$ 116.85  
\$ 5,607.26

### LITTLE ROCK DISTRICT

Bauxite	\$ 65.00
Total for Bauxite—\$80.00	
Benton	5.00
Total for Benton—\$531.00	
Little Rock Churches:	
Asbury	40.00
Total for Asbury—\$2,598.00	
First Church	1,699.35
Total for First Church—\$1,929.35	
Henderson	20.00
Total for Henderson—\$192.00	
Winfield	266.89
Total for Winfield—\$2,145.85	
Bethel	9.00
Pleasant Hill	5.71
Lonoke	25.00
Total for Lonoke—\$153.00	
Walnut Grove	8.50
Martindale	1.63
Total for Martindale—\$9.45	
Salem	50.75
Total for Salem—\$65.00	

Total for Little Rock District \$ 2,076.83  
\$10,891.29

### MONTICELLO DISTRICT

Hampton	\$ 16.15
Wagon	3.50

Total for Monticello District \$ 19.65  
\$ 5,199.85

### PINE BLUFF DISTRICT

Lakeside	\$ 10.00
Total for Lakeside	993.32

Total for Pine Bluff District \$ 7,093.86

### BATESVILLE DISTRICT

Batesville Central Church	\$ 20.00
Total for Central Ch.—\$191.00	
Batesville First Church	5.00
Total for First Ch.—\$341.00	
Calico Rock Church	26.15

APRIL 24, 1952

Newport, First	15.00
Total for First Ch.—\$355.00	
Swifton	30.00

Total for Batesville District \$ 96.15  
\$ 1,528.92

### CONWAY DISTRICT

Atkins	\$ 25.17
Total for Atkins	50.27
N. L. R., Gardner Memorial	108.14
Total for Gardner Mem.—\$127.14	
N. L. R., Washington Ave.	5.00
Total for Wash. Ave.—\$129.54	
Russellville	40.00
Total for Russellville—\$365.00	

Total for Conway District \$ 178.31  
\$ 2,705.62

### FAYETTEVILLE DISTRICT

Alpena	\$ 17.50
Omaha	12.50

Total for Fayetteville District \$ 30.00  
\$ 3,951.73

### FORREST CITY DISTRICT

Forrest City	\$ 158.00
Total for Forrest City—\$578.00	
Marianna	20.00
Total for Marianna—\$195.00	
Marion	48.75
Total for Marion—\$539.97	
Lexa	15.00
Total for Lexa—\$27.00	

Total for Forrest City District \$ 241.75  
\$ 4,083.63

### FORT SMITH DISTRICT

Fort Smith, 1st Ch.	\$ 6.00
Total for 1st Ch.—\$1,562.00	
Mt. Zion (formerly included in Hartman Church)	7.50
Dyer	3.00
Paris	20.00
Total for Paris	252.50
Van Buren, St. John's	50.00

Total for Fort Smith Dist. \$ 79.00  
\$ 4,255.66

### JONESBORO DISTRICT

Jonesboro First Church	\$ 157.75
Total for 1st Ch.—\$1,145.35	
Manila	60.00
Total for Manila—\$320.00	
Bay	20.00
Total for Bay—\$40.00	
Truman	20.00
Total for Truman—\$155.00	
Turrell	12.00
Gilmore	6.00
Wilson	50.00
Promised Land	10.00

Total for Jonesboro District \$ 335.75  
\$ 3,531.26

### PARAGOULD DISTRICT

Eoydsville	\$ 9.00
------------	---------

Total for Paragould District \$ 1,926.63

### SEARCY DISTRICT

DeView	\$ 4.39
Patterson	9.32
Pangburn	17.00
Mt. Pisgah	4.00
Searcy	40.00
Total for Searcy—\$675.75	

Total for Searcy District \$ 74.71  
\$ 2,151.50

Total for North Ark. Conf. \$24,134.95

### SUMMARY

Total for Little Rock Conf.	\$42,931.10
Total for North Ark. Conf.	24,134.95
Individuals	852.29

GRAND TOTAL Christmas Offerings \$67,918.34

We want to express our sincere thanks to the groups and participants listed below who have rendered a service or presented gifts to the Home during the month of March.

### MISCELLANEOUS GIFTS

Mr. and Mrs. Dougherty, Little Rock, bread

Awilda M. Scheer for Pullman Heights Methodist Church, Hot Springs, cookies

Mrs. J. E. McGuire, Little Rock, miscellaneous gifts

R. S. Herron, Representative of General Foods Corporation, Little Rock, Jello

Chas. H. Baber, U. S. Veterans Hospital, N. Little Rock, candy

Mrs. Wm. Heibach, Little Rock, plants

The Friendly Couples Class, Winfield Methodist Church, March birthday presents

Mrs. Graves Hardcastle, Rt. #4, Springdale, quilt

Mrs. Summers, Arkadelphia, clothing

Mrs. Everett N. Salley, 1607 S. Pierce, Little Rock, puzzles and magazines

### MEMORIALS

IN MEMORY OF:

Mrs. Effie Womack by Neighborhood Friends

Mrs. J. Randle Luten by R. L. Bankson

Sharon Kay Gober, Infant, by Mr. and Mrs. Lee Collard, Jr.

Rev. L. C. Gatlin by Hebron Church

Mr. Perry J. Bott by Mr. and Mrs. T. N. Almond and Mr. and Mrs. A. G. Brasfield

Mrs. Cynthia Woods by Mr. and Mrs. L. J. Blanchard

Mr. Oscar Fawcett by Mr. and Mrs. J. E. Highfill

Mr. Eugene C. Fohrell by Gurdon Hoo-Hoo Club

Mrs. J. H. Cummins by Mr. and Mrs. Fay Joyner

Mrs. J. H. Cummins by Mr. and Mrs. S. A. Parriss

Judge M. F. Elms by Mr. and Mrs. Mark Townsend

Mrs. Wesley Willoughby's mother by McGehee Methodist Church Men of Galilee Class

Mr. W. R. Norton by Mrs. Mary McG. Nobles

Mr. W. R. Norton by Edna Raines Class

Mrs. Henry Bennett by Mr. and Mrs. Lee W. Brasfield

Miss Jennie Hardaway by Mr. and Mrs. Yancey

Mrs. Margaret C. Harris by Circle IV, Forrest City Methodist Church

Mrs. Edna Roe by Marianna Methodist W. S. C. S.

Mrs. H. T. Ingram by Mr. and Mrs. John Mac Smith

Mrs. H. T. Ingram by Mr. and Mrs. John Cooper

Mrs. D. Mouzon Mann's father by First Methodist Church, McGehee

Mr. Cullen Tarver by Mrs. Mary McG. Nobles

Mrs. Biddie McGinnis by the W. S. C. S. of Marianna Methodist Church

Mrs. Biddie McGinnis by Mr. and Mrs. G. R. Felton

Mrs. Mary Naylor Moore by Mrs. F. A. Naylor

Mr. W. Frank Ault by Mr. and Mrs. Clarence Cothern

Mrs. R. J. Lybarger by Miss Annie Winburne, Mrs. Martha Pinkley and Miss Jo Pinkley

For Jackson Coleman Memorial by Blackwell Vanguard Class, First Methodist Church, Jonesboro, Ark.

Mrs. Allen H. Neely by Mr. and Mrs. Cecil B. Nance

Mrs. Allen Neely by Mr. and Mrs. Louis Barton

Mrs. Allen Neely by Mr. and Mrs. John Mac Smith and Mrs. Dolph Smith.

TOTAL Memorials \$157.00

### OTHER GIFTS

Builders Class, Paris Methodist Church \$ 10.00

P. E. Cooley, Treasurer, North Arkansas Conference 128.97

Yancey Sunday School Class, Marianna Methodist Church 10.00

Mrs. Chas. B. Thwatt, First Meth. Church, Little Rock 30.00

Mr. and Mrs. H. W. Dean 10.00

Mrs. Vera L. Maxwell 18.00

Mrs. Vera L. Maxwell 10.00

Mr. O. G. Robison 1.00

Men's Bible Class, Forrest City Methodist Church 30.00

Jett B. Graves Sunday School Class, Hope Meth. Church 10.00

C. E. Hayes, Treasurer, Little Rock Conference 214.52

Circle No. 4, Forrest City Methodist Church 13.00

Men's Bible Class, Central Ave. Meth. Ch., Batesville 10.00

The Second Mile Class, First Meth. Church, Jonesboro 30.00

Winsome Workers Sunday School Class, 1st Meth. Church, Batesville 5.00

W. S. C. S., First Meth. Ch., Manila 60.00

Mr. and Mrs. Sam Sullivan, Searcy, Meth. Ch., Searcy 10.00

Mr. and Mrs. Billy Rogers, 1st Meth. Ch., Searcy 30.00

W. S. C. S., Bay Meth. Ch., Little Rock 10.00

Men's Bible Class, Russellville Methodist Church 10.00

Susanna Wesley Class, First Meth. Ch., Texarkana 5.00

Men of Marion Meth. Ch. 38.75

W. S. C. S., Truman Meth. Ch. 10.00

Mr. Marsh Broughton, Hot Springs, Ark. 10.00

Evelyn Whitcomb Class, Asbury Methodist Ch., Little Rock 10.00

Mr. and Mrs. Wade W. Bell of Asbury Meth. Ch., Little Rock 10.00

Mr. P. A. Dulin, Winfield Meth. Ch., Little Rock 120.00

Winfield Methodist Church 89

The Mabel Crawford Class, Lakeside Meth. Ch., Pine Bluff 10.00

Men's Bible Class, Marion Methodist Church 50.00

Circle No. 4, Forrest City Methodist Church 15.00

W. S. C. S., Winfield Church, Little Rock 15.00

Total in Miscellaneous Gifts \$ 168.42

TOTAL \$1,113.55

TOTAL for MARCH, 1952 \$1,270.55

## 5,000 CHRISTIAN WORKERS WANTED

to sell Bibles, Testaments, good books, handsome Scripture mottoes, Scripture calendars, greeting cards. Good commission. Send for free catalog and price-list.

George W. Noble, The Christian Co. Dept. D, Pontiac Bldg., Chicago, 5, Ill.

## BISHOPS COMMEND CHAPLAINS



**BISHOP ARTHUR J. MOORE**, President, Council of Bishops, Visiting Methodist Chaplains in Korea.

Three Methodist Bishops, recently returned from world travel, have commended Methodist Chaplains in glowing terms.

In a recent statement, Bishop Arthur J. Moore, President of the Council of Bishops, said:

"In connection with my other duties, it has been my privilege to spend considerable time in conference with our Chaplains who are with our men in the armed services. These Chaplains richly deserve an increasing place in our appreciation. They risk their lives to be with our sons and fathers who fight and die to preserve freedom. In Korea recently I spent much of one entire day with thirty-one Methodist Chaplains who had been pulled back from the front lines for this conference. Already some Chaplains have died alongside our men on those fiery mountainsides and others will. In hospitals with the wounded, or in training camps they carry on a ministry of courage and consolation. They help to keep our lads clean in life, strong in faith, and worthy of the loved ones back home."

Bishop Gerald C. Kennedy

(Portland, Oregon Area) said:

"On a recent journey around the World I was impressed by the outstanding work being done by our chaplains. I found them to be devoted ministers of Christ, doing one of the most difficult but important jobs which the Church gives to its ministers. They represent Methodism just as any Methodist minister represents it, and they must have the assurance of the loyal affection and support of their Church. The Methodist Commission on Chaplains is to be commended for its efficient and understanding administration of this part of our ministry."

Bishop Richard C. Raines (Indianapolis Area) also recently made a statement with emphasis for "only the abler men to enter the chaplaincy."

"I am very happy to write a word of sincere and wholehearted commendation of the work being done by the Chaplains in Japan and Korea."

"I had opportunity to meet those in charge of the headquarters—Chaplains serving in Tokyo and all along the line from Pusan and Seoul clear up to the

very front line where Chaplain Oliver E. Porter was my guide and companion.

"I was particularly impressed with the quality of the men in places of leadership — their administrative capacity, their spiritual size and earnestness, their concern for the men, and for the civilians as well. I had the distinct conviction that the work of the chaplain had been thought through in a more thorough and satisfactory way than ever before; that the men knew now what they were there for and were fulfilling their missions; that the Commanding Officers have increasing respect for the Chaplains and are making better use of them now than at any time in my experience."

"I came back convinced that only the abler men should go into the Chaplaincy for the work there is of equal importance with the ministry in the local church and of greater difficulty."

Oxford's Famous

### Scofield Reference Bible

A Bible and a Commentary combined. A King James Version.

We carry a complete stock in two sizes. Priced from \$2.25 to \$23.50. Twenty-eight bindings and styles to choose from.

If you plan to purchase a Bible for yourself or as a gift, write for our descriptive folder.

**NORRIS BOOKBINDING CO.**  
102 Nichols Ave., Greenwood, Miss.

## IN KOREA—

### the boy who can't stop crying

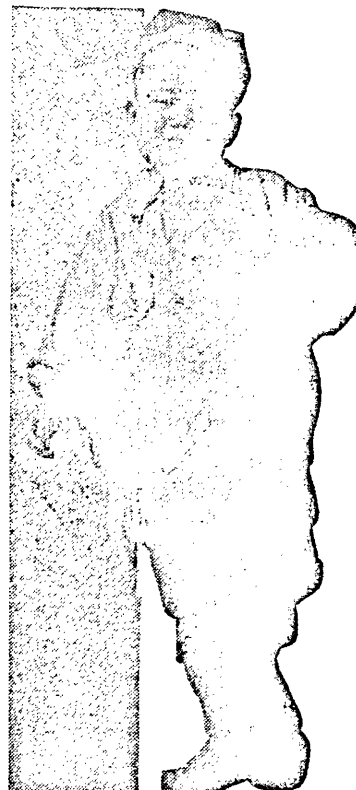
Kang Suk's widowed mother, sitting on her doorway step, called him. Playing across the road from her, he pretended not to hear. He loved his mother but he did not want to stop playing. When she called again, he started toward her. And then it happened—a roar, thunder in his ears, the earth shook and he fell. When he got to his feet again and looked, his mother was gone, his home was gone. There was only smoke and burning debris. Calling, "mother," he stumbled toward her but young as he was, he knew she was in the flames and he could not reach her.

Kang Suk's experiences from then on were much the same as thousands of other children. There was the trudging for mile after mile with the other refugees, all hungry, too. As he grew weaker, he stumbled more and more. But he kept walking and stumbling and—crying. Finally he was picked up

by Operation Kiddie Car and flown with other dirty, ragged, vermin-infested boys and girls to a Christian Children's Fund orphanage on Cheju Island. His teachers, the other children, even food does not interest him much. He seems to want to be alone and he stands by himself and cries. When he is spoken to, he only repeats, "I did not come when my mother called me and now she will not call me anymore."

How much tact, patience and love will it take to cause him to stop crying? And what of the other thousands like him, who lost home and parents and have not been admitted to an orphanage and still are homeless orphans, wandering and starving and freezing in the snow? Such children can be "adopted" by individuals and groups at ten dollars a month. The child will be cared for in a CCF orphanage-school. You will receive the child's name, address, picture and information about the child. You can correspond with the child. You are not obligated to continue the "adoption" beyond a year, unless you should wish to do so. Gifts of any amount are very gratefully accepted.

CCF assists children in 26 orphanages in Korea and children may also be adopted, at the same cost, in CCF orphanage-schools in Brazil, Burma, Finland, Free China, India, Indonesia, Italy, Japan, Lapland, Lebanon, Malaya, Mexico, Okinawa, Pakistan, Philippines, Puerto Rico, United States and Western Germany.



For information write to:

Dr. J. Calvitt Clarke

**CHRISTIAN CHILDREN'S FUND, INC.**  
RICHMOND 4, VIRGINIA

## THE MOORE'S CAFETERIA



415 MAIN STREET

LITTLE ROCK, ARK.

We Specialize In

**Fresh Frozen Vegetables And Fruits**

From Our Own Deep Freeze Lockers  
Owned and Personally Supervised By  
**Mr. and Mrs. Merlin M. Moore**  
"In the heart of the shopping district"

# WOMAN'S SOCIETY OF CHRISTIAN SERVICE

MRS. EWING T. WAYLAND, Editor

## JULIA VISSOTTO WRITES

Miss Julia Vissotto, Crusade Scholar from Brazil to Scarritt during the past two years, and a visitor in both Arkansas and Louisiana last fall, writes as follows:

"To come back home after all that time away is very trying in many ways. It has been for me a period of readaptation and challenging days. Life is quite different, you know, and more than ever I am in need of your prayers and love. I have been trying my best to be able to follow the way of living and not try to do changes in a hurry, all the care and patience are needed in order to give what one has received in a way of education and way of living as I received there.

Every day I am thankful for my experience in the United States and all the blessings and goodness I want to share and give through my life here and my work.

I am at Bennett College, some of my plans changed after I came. Here I teach the primary 3rd grade. I am counselor for a Junior High group in our high school; in the normal school I am helping the girls with practice teaching and hand work; in the school's program of Religious education I am responsible for our daily vespers for our boarding girls of the High School and also Religious Education director for our Student Association for the whole school. Besides these I have many other jobs in the school, committees, a Sunday School class in the Senior Department."

## LETTER FROM ORLENE McKIMMEY



Miss McKimney with new car.

Dear Friends of the Little Rock Conference:

I am so happy to have the opportunity of thanking each of you through our Arkansas Methodist for your share in helping buy the car for our work.

Four years ago, you extended helping hands across the border to buy a 1947 Studebaker which replaced a tired and faithful Ford of 1939 vintage. Now, as the upkeep of the Studebaker became a burden and its trade-in value considerably lessened, you have once again generously responded.

I wish you could see our car in action in Mexico. No one worker is indispensable, but a car — yes. Every Monday morning it is loaded with fruit as we go marketing for the girls. Three times a week from five to ten children are taken to the dentist.

Its use is constant in purchases for home, farm, and school, and seldom does it run an errand in the girls free hours that it is not filled with laughing, singing children who cry, "Take me, take me!"

So not only a faithful worker in the essentials but also a means of enjoyment for many a child throughout the year, our Plymouth '52 has years of joyful service ahead of it in Mexico.

We thank you, and we thank Mr. Sadler of Sadler-Ross Motor Company for the especial consideration in price he gave us.

As we work together for His kingdom may each be blessed with His joy and peace.

Gratefully,  
Orlene McKimney  
Mariano Escobedo 291  
Colonia Anahuac, D. F. Mexico

## SOCIETIES ELECT NEW OFFICERS

Officers of the newly-organized Gosnell Society were installed in a candlelight ceremony March 16 with Mrs. Roy I. Bagley in charge. Mrs. Damon Cook is President; Mrs. Clyde Fowler, Vice-President; Mrs. Bill Wagon, Secretary and Mrs. Mervin Cook, Treasurer. The society will meet semi-monthly.

At this time of the year all of the societies are electing new officers; among those reported are:

**Geyer Springs:** President, Mrs. S. E. Whitwell; Vice-President, Mrs. Roy Huffstutlar; Recording Secretary, Mrs. C. E. Marshall; Promotion Secretary, Mrs. Robert Barron; Treasurer, Mrs. J. L. Jaynes.

**Clinton:** President, Mrs. Bill Jennings; Vice-President, Mrs. A. L. Stephens; Promotion Secretary, Mrs. R. E. O'Bannon; Recording Secretary, Mrs. Brice Smith; Treasurer, Mrs. Kermit Davenport.

**Hampton:** President, Mrs. Sloan Rainwater; Vice President, Mrs. Wister Adams; Recording Sec-

## NEWS IN BRIEF

The Spring meeting of the Wesleyan Service Guild of the Forrest City District will be held Sunday afternoon, April 27, at 2:30 in the Methodist Church at Forrest City, with Miss Virginia Hine, Secretary, presiding.

Mrs. J. Russell Henderson of Little Rock, WSCS Jurisdiction Secretary of Christian Social Relations and Local Church Activities, will be the guest speaker of the afternoon.

Members of the newly organized guild at Central will be presented to the group, and the District Secretary to succeed Miss Hine, who has served the past quadrennium, will be elected to take office June 1. Representation from each Guild is urged.

Miss Elizabeth Thompson spoke to a joint meeting of the WSCS and the Wesleyan Service Guild of the Jennings First Methodist Church in March. The devotional for the meeting was led by Mrs. Flavia Lambert of Crowley. Visitors to the meeting included members of the Guild from Welsh.

Mrs. George Stilwell led the program at Lake Street, Blytheville, which honored the nine new members gained during the progressive visitation. She was assisted by Mrs. C. T. Shamlin, Mrs. Billy King, Mrs. George Shanks, Mrs. W. L. Green, Mrs. Don Lutz, Mrs. C. M. Baxter, and Mrs. George McGhehey.

Mrs. J. R. Jordan was honored at a surprise tea at Clinton, March 19, when the Society met for its monthly meeting. Mrs. Howard Francis was in charge.

## WOMEN IN THE CHURCH

By Mary Fowler

Among the members of the "General Board"—directing body of the National Council of the Churches—who spoke against universal military training proposals now before Congress and branded the move "a long step in the direction of a garrison state," were Mrs. Douglas Horton, wartime director of the WAVES, and Mrs. Clifford C. Cowin of Cleveland.

retary - Treasurer, Mrs. Jack Thomason; Promotion Secretary, Mrs. Victor Nutt.

## GOWNS



Write for FREE Choir Gown Style Book J4, Pulpit Apparel Style Book JP54. Ask for Budget Payment Plan.

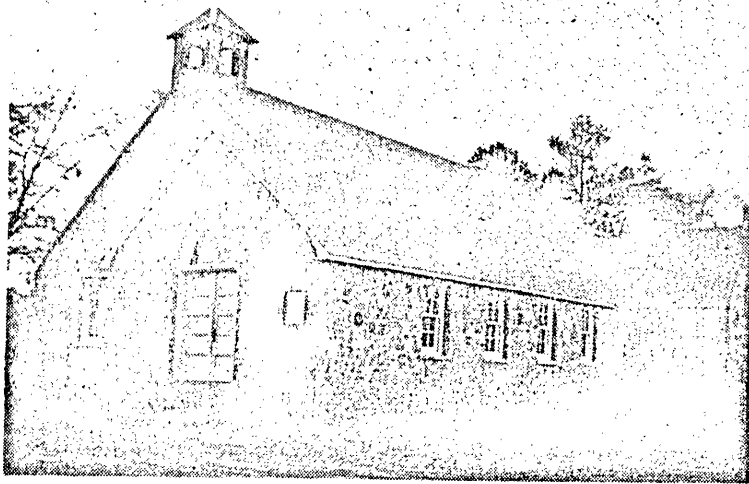
Confirmation Gowns—rental or sale

E. R. MOORE COMPANY

932 Dakin St. Chicago 13, Ill. 11 West 42nd St. New York 18, N. Y.

# CURRENT NEWS IN ARKANSAS METHODISM

## Dedication of Morning Star Church



The Morning Star Church on the Garner-Morning Star Charge was dedicated on Sunday, March 30, with Rev. J. M. Hamilton, district superintendent of the Arkedalphia District, preaching the dedication sermon. The native

stone church was erected in 1946. Rev. Albert Burroughs was pastor at the time the church was built.

Rev. Cleve H. Gilliam is the present pastor.

## NEWS FROM THE MENA CIRCUIT

Every church on this charge is making progress, and we are completing the new parsonage, which will soon be ready to move in to. It is a beautiful red tile brick, with 5 rooms and bath, composition roof, and plastered inside, and is modern in every respect, with hot and cold water and city sewerage connection, and butane gas. The First Methodist Church of El Dorado, through Dr. Neill Hart, the pastor, sent us a nice donation on the parsonage, and we are indeed grateful to them. We will not have a debt hanging over the parsonage, for we are paying as we go. This is as good as the best among the parsonages of our Conference, not as large as some, and has not cost as much

as some, but it is a perfect home. Our Sunday Schools are doing well, and our Woman's Society of Christian Service is doing splendid work.

I have 20 volumes of Hastings Great Text of the Bible, in perfect condition. Anyone desiring them might write me. — W. C. Lewis, Pastor, Box 648, Mena, Arkansas.

Give a man a very mild dose of a disease and he develops an immunity to the real thing. This can happen in religious life as well. It is easy to become immune to real religion by becoming partially infected with small doses . . . or by exposure to the wrong kind of religion.—Halford E. Luccock & Robert E. Luccock, Pulpit Digest

## Hendrix Chapel Choir On Spring Tour

The Hendrix Chapel Choir began its Spring tour into cities in Southern Arkansas Sunday, April 20th. Included in the itinerary are concerts in El Dorado, Texarkana, Hope, and Hot Springs. The choir also sang for the regular Sunday morning church services at Pulaski Heights Church, Little Rock, on the 20th.

The music to be presented for the evening concerts includes a wide variety of religious masterworks from the 16th century to compositions by contemporary composers. A group of American Spirituals is always included in each program.

Earle Copes, director, has the philosophy that churches and schools should have the opportunity to hear more of the great religious music performed in highly artistic manner. College singers are capable of such performance and therefore should be trained to present some of the more difficult works, which the average church choir cannot do, Mr. Copes believes.

Although a large percentage of each program is sung a capella, there is usually at least one major work with organ accompaniment. Frequently, this selection is a chorus from one of the great oratorios. On their Christmas tour, the choir sang the famous "Hallelujah" chorus from Handel's Messiah. The Spring tour will feature the chorus "How Lovely



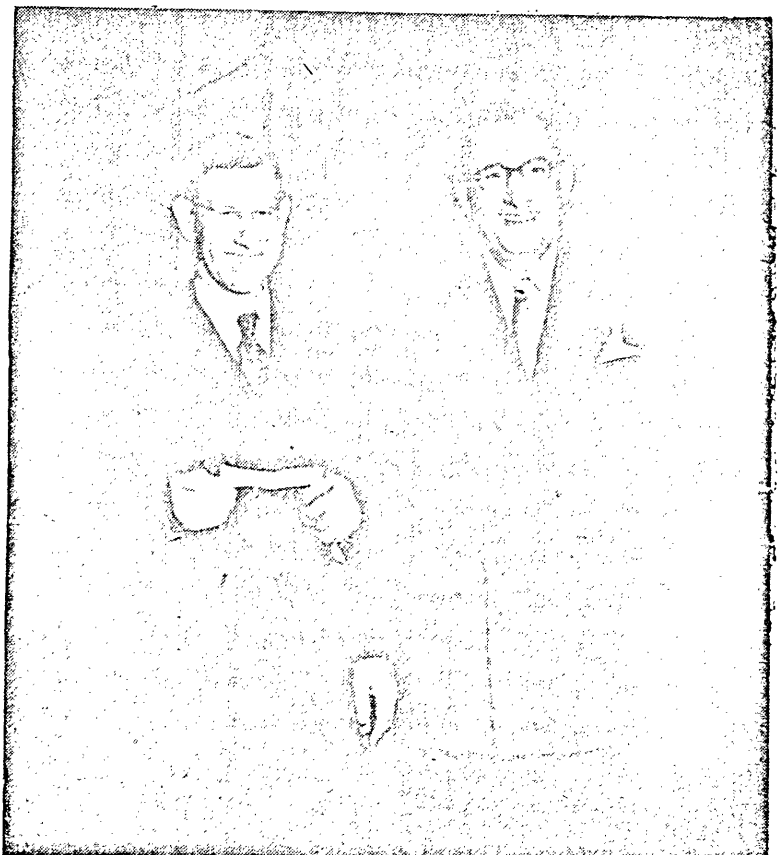
V. Earle Copes, Director

Is Thy Dwelling Place" from the German Requiem by Brahms.

Day-time programs given in High Schools are composed of lighter works, often secular in nature, in addition to a group or two from the sacred repertoire.

The choir is in constant demand for concerts in churches and schools throughout the state, and it is regrettable that all invitations cannot be accepted. By the end of the current school year, the Chapel Choir will have made 29 individual appearances in Arkansas this season.

## Helena Pays Balance On Quota For Camp



Claud Harris, Chairman of the District Finance Committee of the Youth Camp at Bear Creek Lake of the Forrest City District, presented to Rev. E. W. Dodgen, District Superintendent, a check of \$1,090.00, the balance due on the quota for the Camp of the First Methodist Church, Helena, at a meeting of 200 laymen of the District at the First Methodist Church, Friday night, March 28.

Helena is cooperating with the other Methodist Churches in the

Forrest City District in raising \$20,000.00 to build a youth camp at Bear Creek Lake where a camping program for the youth of this District can be conducted.

The District Committee, in charge of erecting the camp is as follows: C. L. Harris and E. J. Holifield of Helena; C. W. Hoyle, J. T. Randle, and Neal Dooley of Marianna; Rev. E. W. Dodgen, T. W. Stout of Forrest City; Alfred Knox of West Memphis; and Clay Bumpers of Elaine.



## "Along A Country Road" The Town and Country Commission

The Methodist Church  
The North Arkansas Conference  
Hendrix Station, Conway, Arkansas  
Paul E. Martin, Bishop  
Rev. Floyd G. Villines, President  
Mr. Lester Hutchins, Vice-President  
Rev. N. Lee Cate, Secretary  
Rev. J. Albert Gatlin, Executive Secretary

### THE TOWN AND COUNTRY COMMISSION

Sunday, March 30th, was a very pleasant day, as the writer visited the Paragould Circuit and the Wood's Chapel Church. This is one of the old churches of Green County with a long and distinguished record of service. The congregation of Pruitt's Chapel visited with the Wood's Chapel congregation for the morning service and the Sunday School session. There was a very splendid congregation and the fellowship was most enjoyable. Rev. Robert Montgomery has served this church the past three years in a splendid manner.

On Sunday morning, April 6th, it was the writer's privilege to visit the Plainview Church, where Rev. David Crouch, Hendrix ministerial student, has served as pastor. A splendid congregation assembled for the worship service, which included the observance of the Lord's Supper. The Sunday School session was interesting and inspiring, as was the Sunday School session at Wood's Chapel. One cannot visit in the rural and small town Sunday School sessions and hear the splendid lessons presented by the teachers and the discussions on the part of class members without having a deep sense of appreciation of the fine service being rendered to our great church.

This past week the writer was engaged in services at Plummerville, where Rev. Bill Walker is the pastor. The attendance on the part of the Plummerville people and surrounding communities has been most encouraging. Decisions for Christian discipleship were made and rededication to a closer walk with the Lord was experienced by members of the church. The song services were directed by Mr. Bill Fleming of Conway in a most splendid manner. Special music each evening added to the inspiration of the services.

One of the outstanding experiences enjoyed by the Secretary of the Town and Country Commission has been the fellowship with ministerial students on the Hendrix campus, as well as other students with whom we come in contact. There is no finer group of disciples than the student workers serving charges over our conference. As they endeavor to meet the standards of college

training, meet the challenge of service on their charges and meet their own responsibilities personally and to their families, they carry a tremendous load. They are truly heroic in spirit. The Methodist Church can look forward to greater days, as these young men go out for full-time Christian service.

Holy Week is one that brought great joy to all of us who are having the privilege of service in the Master's Kingdom. One of the inspiring facts before us is that more and more of our rural churches are making much of Holy Week with special services during the week and on Easter Sunday itself. With the growing concern of our laymen in the matter of worship services, the day will not be too far away when there will be great fellowship services in every one of our churches every Sunday.

### ASHDOWN MEN ELECTED HONORARY STEWARDS

On Thursday night, April 3, two men were elected honorary stewards in the Methodist Church at Ashdown. These two men represented about 100 years of service to the church as stewards.

E. E. Franklin, the first of the two, was born at Houstonia, Mo., Nov. 22, 1879. He joined the Methodist Church when he was 16 years of age. The pastor then was a Rev. Billy Snow. Mr. Franklin came to Arkansas January 11, 1911. He served as Sunday School superintendent a number of years, and has been a steward for more than 40 years.

Seth C. Reynolds, a native of Faulkner County, Ark., joined the Pleasant Valley Methodist Church, Naylor, Arkansas, when he was a young man. The pastor then was a Rev. Mr. Hamilton. He was first made a steward in 1894 at Wing, Arkansas in Yell County, and has been a steward since that time. He served as superintendent of the Sunday School in Ashdown a number of years. He is the brother of the Rev. James A. Reynolds, now a retired member of the North Arkansas Conference, and living at Conway, and of Dr. John H. Reynolds, who served many years as president of Hendrix College.

In appreciation of their many years of service in the Methodist

### PRIMROSE MEN HOST AT DINNER

On Wednesday evening, April 2, the members of the Men's Fellowship of the Primrose Methodist Church served a delicious dinner to the women of the church. Luther Dixon, Ed Wright and Clark Young were the committee in charge assisted by the members of the fellowship and the pastor, Rev. H. D. Ginther.

This dinner was given in appreciation for the dinners the men have enjoyed once each month for the past two years.

The men, with white towels tied around their waist served the thirty-six women baked ham, candied sweet potatoes, English peas, fruit salad, hot rolls, home made ice cream, cake and tea or coffee.

The men arranged the flowers, set the table, prepared and served the dinner and washed the dishes. Of course, it was quite a treat to the women to sit back and relax while the men took full charge.

After the good dinner the women were asked to join in group singing. As an added treat the chefs formed a choir and sang "All Hail the Power of Jesus Name" and "Shall We Gather at the River?"

We, the women of the church, enjoyed every minute of this gathering and hope this will be only the beginning and that many more dinners just such as this will follow in the future. — Reporter.

In the picture a child draws of the world there is always a sun shining—even on a rainy day.—Marcelene Cox, Ladies' Home Jnl.

Just praise is a debt, and must be paid.—Address Book

Church, the church at Ashdown elected these men as honorary stewards for the remainder of their lives. — Reporter.

### ORGAN DEDICATION AT GRAVETTE

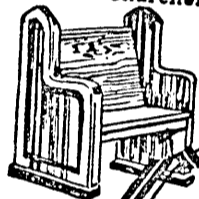
The new Hammond organ of the Gravette Methodist Church was dedicated Sunday evening, April 6 by Rev. W. F. Cooley, District Superintendent. Just prior to the dedication W. A. Fisher, Chairman of the Board of Stewards, presented the organ on behalf of the Board and the Church to Bro. Cooley for dedication. Rev. H. W. Jinske, pastor, opened the service with prayer. Mrs. Clarence Teeter and Mrs. Joe McAllister played organ solos as features of the dedication. Bro. Cooley conducted the dedicatory ritual responsively with the congregation, concluding with the dedicatory prayer.—H. W. Jinske, pastor.

Some people are making such thorough preparation for rainy days that they aren't enjoying today's sunshine.—Baptist Evangel.

**TENNESSEE MILITARY INSTITUTE**  
Founded 1874 79th Year  
Limited to 200 boys. Grades 8 through 12. Over 90% of graduates enter college. Small class sections. Personal attention. A school where the Bible is taught. Facilities for all intramural and interscholastic sports, including swimming and golf. Tuition \$1150.00. For catalog, write:  
Colonel C. R. Endsley, Pres., Box 10, Sweetwater, Tennessee

### PEWS & CHANCEL FURNITURE

For All Churches, Large or Small



Quick Delivery!  
Reasonable  
Prices.  
Write for  
Catalog ...  
No Obligation.

**Leird**

**MANUFACTURING COMPANY**  
P. O. Box 1820  
2816 W. 16TH ST., LITTLE ROCK, ARK.

### Little Rock's Favorite Eating Place

"Quality Food at Popular Prices"

Stop in and enjoy our excellent variety of delicious foods at reasonable prices.

**LIDO**  
CAFETERIA  
615 MAIN STREET



# The Sunday School Lesson

By REV. H. C. BOLIN

Lesson based on "International Sunday School Lessons; the International Bible Lessons for Christian Teaching," copyrighted 1951 by the Division of Christian Education, National Council of the Churches of Christ in the U. S. A.



LESSON FOR MAY 4, 1952

## WHAT IS PROFANE LIVING?

READ THE ENTIRE LESSON FROM YOUR BIBLE:

Exodus 20:7; Matthew 5:33-37; Matthew 23:16-22; Mark 7:5-8; Luke 6:46, 11:1-4.

AIM OF UNIT: To lead adults to a more spiritual conception of life and to take steps to increase the spirituality of their own lives.

GOLDEN TEXT: *Thou shalt not take the name of the Lord thy God in vain.* (Exodus 20:7)

### A Look At The Scriptures

The first passage of our lesson (Exodus 20:7) is the third of the Ten Commandments. "Thou shalt not take the name of the Lord thy God in vain." We are still dealing with that group of the commandments which has to do with one's relationship to God. If one will faithfully keep the two commandments with which we have already dealt, he will naturally keep the one of our present lesson. These two deal largely with the matter of putting God first in life and no one can do this and at the same time profane his name.

### Importance Of A Name

Some people feel that names do not amount to much. We have heard the old saying, "A rose called by any other name would smell just as sweet" and again the question, "What's in a name?" Both of these imply that names are not important. But such is not the case. This is especially true when the name applies to a person. The name stands for the person and is as sacred as the person. Let me illustrate, here is a person whom you know well. You know as much about him as it is possible for one person to know about another. Some one calls his name. There comes before your mind not only a mental picture of his appearance but also something of the traits of his character. The name stands for all these. It is what the name stands for that counts most rather than the name itself. Here are two men with identical names. The name of one on a check or bank draft is worth a million dollars while the name of the other is worth nothing.

So it is with the name of God. His name stands for his character. He was known to the ancient Hebrews as the Almighty. He revealed himself to Moses as Jehovah. Christ revealed God as Father. This implies his kinship to humanity.

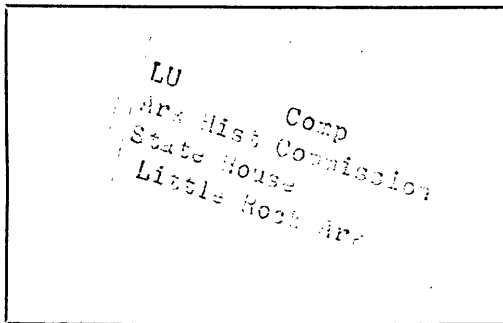
Thus we see the terrible sin of taking God's name in vain. It is an attempt to bring reproach upon God. It is a terrible thing to even take a good man's name in vain. Think of the smear tactics that are going on in this nation today. Literally scores of people in high places are taking the names of others and deliberately smearing them with their lies. Now, if individuals who are trusted as leaders of this nation are corrupt and crooked, they ought to be exposed. The continued health of the nations demands it. But the individual who does the exposing ought to be very careful to tell the truth and nothing but the truth when he calls the name of another and, too, he ought to be careful that he himself is not as guilty as the one whom he attempts to expose.

### How God's Name Is Taken In Vain

There is more than one way of taking

God's name in vain. May we note them.

A person is taking God's name in vain when he takes it upon his lips irreverently and attaches to it such epithets as "by", "damn", etc. This is a terrible sin and in addition it is a silly sin. The sinner gets something for every other sin he commits except this one. But here he gets absolutely nothing except a guilty conscience. He foolishly barter his eternal welfare for that which brings him nothing in return. Many claim that God will not hold them accountable for thus taking his name because it has become a habit with them. They profane his name without thinking about it. This



will never excuse them. To be a Christian means that one must love God with all the soul, mind, and strength and no intelligent person can thus love God and at the same time take his name in that way without knowing it. Therefore, if one were not damned for taking God's name in vain, he would be so for not loving God supremely and putting him first in life. There is nothing in life that more readily shows that one's life is honey-combed with evil than the habit of profaning the name of God.

Our next passage (Matthew 5:33-37) gives another way of taking God's name in vain. This has to do with taking an oath in the name of the Lord and then swearing falsely. For example, one goes into the law court as a witness. He is required to hold up his right hand and swear to tell the truth and nothing but the truth so help him God. He then sits down in the witness chair and lies. He thus commits two vile sins; he has taken the name of God in vain and he has sworn a lie.

The statement made by Christ in this passage — "do not swear at all" — is not to be taken as applying to law courts. As a matter of fact Christ himself was put on oath before the Sanhedrin (the Jewish law court). The High Priest Caiaphas said to him "I adjure you by the living God to tell us plainly whether thou be the Christ." The Lord replied "Thou hast said" which was the Hebrew way of saying "yes". Under oath Christ replied to this question.

What Christ was really condemning was the fact that the Pharisees had no compunction of conscience against lying so long as they were not under oath. What Christ was saying here is that there is no distinction in truth, whether it be taken under oath or merely repeated. He was insisting that a person's mere word should be his bond. Some years ago the writer heard of a man who was swearing before a law court. In his oath he went on to make a certain statement. One of the lawyers went on to remind him that off of the witness stand he had made a different statement. The man replied, "I was just talking then; I am swearing now." It was that spirit that Christ was condemning. He was insisting that a person be so truthful that a mere statement from him would be just as truthful as an oath. How badly we need that kind of morals in our world today!

### Dodging The Issue

In the next passage (Matthew 23:16-22) Christ warned the Pharisees and scribes against making loopholes through which they crawled to dodge the seriousness even of oaths they had taken. Through their traditions they had made void much of the law of Moses. They argued that one could swear by the temple alone and his oath was not binding; he could handle the truth carelessly without bad consequence. On the other hand if he swore by the gold of the temple then his oath was binding. Christ further condemned them for permitting people to swear falsely by the altar just so they did not include in their oath the gift upon the altar. If they did this then their oath was binding. The Lord pointed out to these blind guides the fact that they were misleading the people. He contended that if the temple sanctified the gold that was used in overlaying certain portions of it, then the temple was greater than the gold. All gold was not sanctified. Only that which was used in the temple was. The temple, therefore, is the greater. To release one from an oath where only the temple is mentioned is to reverse the order of importance. The same is true with regards to the altar and the gift upon it. The fact that the gift is on the altar is what gives it such great value. To release one, therefore, from an oath where only the altar is mentioned and to make the oath binding if the gift is also spoken of is to get the cart before the horse; to give the thing of lesser importance first place. They were doing all of this to dodge the real issue. Their motive was to make a loophole for false swearing and furnish themselves with an alibi for failure to stick to the truth. Little wonder Christ called them "Blind leaders of the blind."

### Honoring God's Name

The passage from Luke (11:1-4) not printed in lesson gives the Lord's Prayer in brief form. The particular statement we wish to deal with here is "Hallowed by thy name". It isn't enough merely to refrain from profaning the name of God. There is a positive as well as negative side to religion. This term "hallowed" means to revere, hold sacred, praise, and adore the great name of God. This statement is made before a single petition of the prayer is offered. One cannot get his petitions before God without first assuming the right attitude toward him. That is why profanity is such a terrible sin. It prevents one from praying in the proper way and keeps him from having harmonious fellowship with God. God must come first in life and we prove our great love for him by holding his name in highest reverence.

ARKANSAS METHODIST