

Arkansas Methodist



"SERVING TWO HUNDRED THOUSAND METHODISTS IN ARKANSAS"
Official Publication of Arkansas Methodism

VOL. LXXI.

LITTLE ROCK, ARKANSAS, JANUARY 24, 1952

NO. 4

Circulation Campaign Report No. 2

REPORT NO. 2 of the Eleventh Annual Circulation Campaign of the Arkansas Methodist on page 8 and 9 shows that as of Saturday noon, January 19, a total of approximately 17,500 subscriptions had been reported by the pastors of Arkansas Methodism. By way of comparison with Report No. 2 of the 1951 Circulation Campaign, Report No. 2, 1952, exceeds Report No. 2, 1951, more than 500 subscriptions, which indicates that final reports will show a larger list for 1952 than any previous year in Arkansas Methodist history. There are a few charges which as yet for various reasons have not made their reports. When these have been received we are confident that the foregoing statement will be realized.

No one is more conscious than the Arkansas Methodist staff of the handicaps under which Arkansas District Superintendents, District Directors and the pastors have labored to make this circulation effort the success that it has been. Coming in the midst of a crowded conference calendar, and so close to the Christmas season plus the fact that inclement weather prevailed in many sections of the state during the actual date of the campaign makes the achievement all the more significant. However, in some sections which were the most affected by weather conditions, the response has been exceptionally good. All this adds up to the conclusion that a most remarkable job has been done.

The final charge by charge report will be published in next week's issue of the Arkansas Methodist and will include all reports received by Saturday noon, January 26. Obviously your staff is anxious to conclude this period of circulation emphasis as early as possible, but we trust that every charge will continue to receive subscriptions and report them even after the full reports are discontinued.

The report this week shows that Hope, Conway, Forrest City, Monticello and Paragould Districts in Arkansas and the Alexandria District in Louisiana have exceeded their quota. Reports received in our office too late for tabulation put the Fayetteville and Searcy Districts also over their quota.

The Racing Commission Reverses The Decision

LAST Monday, in a meeting called for the special purpose of reconsidering its action in granting a franchise to Dixie Downs for a race track at West Memphis, The Arkansas Racing Commission voted eight to one to reverse its action. This leaves Dixie Downs without legal authority to build and operate a race track.

(Continued on page 4)

Old Time Revivals

EVANGELISM is the Christian Church's first responsibility and its most important activity. Jesus often stresses the necessity for evangelism but nowhere did He set up a specific, exclusive method by which it should be carried on.

It is not uncommon to hear some one say, "I believe in the old time revival." In that they refer to the protracted meeting or mass evangelism, as it has been practiced in America for the past two hundred years. The writer strongly believes in that method of evangelism wherever effective. For the first twenty-five years of his ministry our church gave little emphasis to evangelism except through the "revival season" when a protracted meeting was the center of the effort.

While mass evangelism was the major

Let your light so shine before men that they may see your good works and glorify your Father which is in heaven. (Matt. 5:16)

method used during the larger portion of our ministry, we are thankful that it is not the only effective method of reaching the unsaved because, in many places today, mass evangelism itself, as a method, has lost much of its effectiveness.

Furthermore, it might be interesting to remember that mass evangelism, as we know it, is a comparatively modern method of promoting the kingdom. The two hundred years in which mass evangelism has been so effective are the "latter years" in the two thousand years of Christian history.

In the early centuries of the Christian movement, mass evangelism was practically impossible. Jesus never held a "protracted meeting." He was, of necessity, a traveling evangelist. His enemies saw to that. Christianity, in its early centuries was an "under cover" movement. No loudly advertised mass meetings were possible. The Roman government saw to that. Nevertheless, by personal contact, by word of mouth and by personal living, Christianity grew in those early years like fire in dry stubble. If we want to go back to the real "old time" revival, we should re-study the first three hundred years of Christian history. Today we are combining the modern method of mass evangelism with the "old time" method of personal evangelism and the results give promise of a new day for the Christian church.

The Harvest Is Here

AT this writing the Unit B Period of Operation of the United Evangelistic Mission is in full swing in the twelve participating districts of the Unit and there is every indication that it will be the success which all the planning, praying and preparation have hoped for. Your writer has had the opportunity thus far to have made actual contact with seven of the twelve districts and the report is the same everywhere—the mission is off to a great start with fine interest being manifest by Methodists everywhere. This evangelistic program is the largest ever undertaken by Methodists in Arkansas and there is every reason to expect it will be the best.

We have been impressed by the enthusiastic response on the part of the membership of local churches to the challenge of the U.E.M. program. The first hand reports from pastors and what we have seen for ourselves have convinced us that Methodist lay people have responded marvelously to the opportunity which this evangelistic endeavor affords. They have caught something of the vision of the program's potential possibilities and through the program's various opportunities they are working to achieve the desired ends. Pastors are proud and grateful that their people have responded to the call to help win others to Christ and His Church.

We have also been impressed by the response of the pastors to the program. Methodist preachers, who for various reasons are sometimes slightly suspicious of many of the "programs" which come their way, have from the start gone "all out" in this particular program. Needless to say, without the promotional assistance and direction of the local pastor, the U.E.M. program in any local church would be a dismal failure from the start. On the other hand, there has been nowhere the half-hearted lukewarm attitude with which some programs are undertaken. The lack of emphasis on the financial aspects of the program may account in part for the leadership which Methodist preachers have given, but we believe that they have done what they have done because of their genuine concern for the unchristian and unchurched persons in their communities, and the pastors have recognized here an unprecedented opportunity to reach many of them for the Kingdom.

We too have been impressed by the way the connectional system of Methodism lends itself so readily to the development and promotion of such a program and without which such a program would be handicapped. The leadership which the various District Superintendents have given in the A and B Units has been superb. These ministers have worked long and hard, attending to a multitude of details which they alone know about. The cooperation of the various conference agencies involved, not only in clearing cal-

(Continued on page 4)

Assignments Of Guest Ministers In Unit "B" U. E. M.

The following assignments were announced recently of the guest ministers from the Louisiana Conference and the Camden and Hope Districts of the Little Rock Conference to work in the various pastoral charges of the twelve districts comprising the "Unit A" of the Arkansas-Louisiana United Evangelistic Mission, January 18-27. With only a few exceptions the assignments as announced here are the ones which are now being worked out this week.

Personnel Committees in each of the Districts assisted the District Superintendents in the assignment of these men within the districts after a certain number of car pools had been assigned to each district.

The Guest Pastors have been assigned as follows:

MONTICELLO DISTRICT

Dr. W. E. Brown, District Superintendent

Crossett, W. D. Boddie, Springhill, La.

Dermott, W. D. Milton, Haynesville.

Dumas, Frank C. Tucker, Jr., Baton Rouge, La.

Eudora, D. W. Poole, Lafayette.

Fordyce, Oakley Lee, Baton Rouge, La.

Hamburg, A. A. McKnight, Tallulah, La.

Hampton, Ned Stout, Eunice, La.

Hermitage, J. F. Kellogg, Weaver, La.

Huttig, G. H. Corry, Ville Platte, La.

Lake Village, G. W. Dameron, Pineville, La.

McGehee, B. A. Galloway, Natchitoches, La.

Monticello, Dawson C. Bryan, Houston, Texas.

Parkdale, Lael S. Jones, Mangham, La.

Portland-Montrose, Earl B. Emerick, Rayville, La.

Star City, Don Wininger, Delhi, La.

Thornton, J. W. Lee, Natchitoches.

Tillar-Newton's Chapel, D. B. Boddie, Gueydan, La.

Strong, Robert Walker, Houston, Texas.

Warren, James T. Harris, Baton Rouge, La.

Watson, M. L. Davis, Choudrant, La.

Wilmot, J. P. McKeithen, Cotton Valley, La.

Fountain Hill, Leo Westbrook, Oberlin, La.

PINE BLUFF DISTRICT

Dr. J. L. Dedman, District Superintendent

Almyra, R. R. Miller, Crowley, La.

Alzheimer, W. F. Howell, Iowa, La.

Bayou Meto, A. D. St. Amant, Zwolle, La.

DeWitt, J. C. Whitaker, Sulphur, La.

England, B. R. Shelton, New Boston, Texas.

Gillett, E. W. Day, DeQuincey, La.

Good Faith, Eldred Blakeley, New Orleans.

Grady, Glen Smith, Pleasant Hill, La.

Gould, Phillip Pallotta, New Orleans, La.

Carr Memorial, Bentley Sloan, Shreveport, La.

First Ch.—Pine Bluff, George Ivey, Shreveport.

Lakeside, N. H. Melbert, New Orleans.

Hawley Memorial, A. T. Law, Welsh, La.

Rison, Lewis G. Hunter, Maplewood, La.

Sheridan, R. B. Crichlow, Ginnings, La.

Grand Avenue—Stuttgart, H. A. Rickey, New Orleans.

LITTLE ROCK DISTRICT

Francis A. Buddin, District Superintendent

Bauxite, Roy Mouser, Baton Rouge, La.

Benton, A. M. Freeman, Ponchatoula, La.

Carlisle, John Koelemay, Shreveport, La.

Carlisle Ct., Fred W. Campbell, Lacombe, La.

Des Arc, Robert C. Carter, Covington, La.

Douglassville, J. B. Grambling, Shreveport, La.

Geyer Springs, Garland C. Dean, Jr., Shreveport, La.

Hazen, George W. Ross, Bronson, Texas.

LITTLE ROCK CHURCHES:

Asbury, Alfred Freeman, Wichita Falls, Texas.

Capitol View, Robert A. Greaves, Jr., San Augustine, Tex.

First Church, Wm. E. Trice, Baton Rouge, La.

Henderson, Marvin H. Corley, Baker, La.

Highland, Carl Lueg, Lake Charles, La.

Hunter, Fred S. Flurry, Hammond, La.

Oak Forest, James D. Jenkins, Memphis, Tenn.

Pulaski Heights, Earl Hoggard, Wichita Falls, Texas.

Scott Street, Karl Tooke, Lake Charles, La.

St. Paul, James Stone, Zachary, La.

Twenty-Eighth St., Ted Weber, Lake Charles, La.

Winfield, Guy Hicks, Shreveport, La.

Little Rock Ct., J. Cude Rouseaux, Pearl River, La.

Lonoke, Don Risinger, Amity, La.

Mabelvale, Ted Howes, Lake Charles, La.

Primrose, A. D. Roberts, Slidell, La.

Salem-Mt. Carmel, A. E. Goode, Conway, Ark.

Mt. View, A. G. Taylor, Kentwood, La.

FORT SMITH DISTRICT

Dr. W. Henry Goodloe, District Superintendent

Alma, Rev. D. T. Williams, Sterling, La.

Booneville, Rev. Ralph Cain, Monroe, La.

Branch, Rev. D. R. Deen, Vandalia, La.

Charleston, Rev. B. E. Bond, Farmersville, La.

Clarksville, Rev. Jack Midyet, Bastrop, La.

FORT SMITH CHURCHES:

First Church, Rev. Nuell C. Crain, Oklahoma City, Okla.

Goddard Memorial, Dr. A. M. Serex, Monroe, La.

Fifth Street, Rev. A. M. Martin, Jeanerette, La.

Grand Avenue, Rev. Robert H. Jamieson, New Orleans, La.

Massard, Rev. William C. Barham, Lisbon, La.

Midland Heights, Rev. Virgil D. Keeley, Hope, Ark.

St. Luke, Rev. Lea Joyner, Monroe, La.

St. Paul's, Rev. Louis Hoffpauir, New Iberia, La.

Towson Avenue, Rev. J. F. Glover, Paris, Ark.

Greenwood, Rev. James Simpson, Lewisville, Ark.

Hartford, Rev. W. Spencer Wren, New Orleans, La.

Hartman, Rev. Joe W. Hunter, Blevins, Ark.

Dyer, Rev. Raymond Peirson, Indian Bayou, La.

Huntington, Rev. W. Henry Goodloe, Fort Smith, Ark.

Lamar, Rev. James L. Beasley, Gibsland, La.

Lavaca, Rev. O. W. Hoover, Bradley, Ark.

Magazine, Rev. John W. Rushing, Emmet, Ark.

Mansfield, Rev. W. R. Burks, Prescott, Ark.

Mulberry, Rev. Hubert A. Gibbs, Arcadia, La.

Ozark, Rev. Virgil M. Culpepper, Jonesville, La.

Paris, Rev. Luman E. Douglas, Homer, La.

New Blaine, Rev. Samuel B. Dampier, Athens, La.

Van Buren—First Church, Rev. E. P. Drake, Abbeville, La.

Van Buren—City Heights, Rev. J. J. Davis, Sicily Island, La.

Van Buren—St. John's, Rev. Don. W. Alverson, Ferriday, La.

Waldron—First Church, Rev. W. H. Bengston, Winnsboro, La.
Waldron Ct., Bird View, Rev. J. C. Rosseaux, Jr., Simmsboro, La.

PARAGOULD DISTRICT

Rev. A. N. Storey, District Superintendent

Knobel, C. E. Davis, Watson, La.

Black Rock, Webb Pomeroy, Deerford, La.

Corning, A. C. Cavanaugh, Lafayette, La.

Hoxie, W. D. Golden, Ashdown, Ark.

Imboden, W. B. Yount, Blytheville, Ark.

Simmons Ch., Robert Corcoran, El Dorado, Ark.

Mammoth Spring, W. R. Boyd, Magnolia, Ark.

Ravenden Springs, K. K. Claiborne, Magnolia, Ark.

Paragould—1st, L. M. Starnes, St. Joseph, Mo.

Paragould—Griffin Mem., Howard Williams, Foreman, Ark.

Shiloh, J. A. Knight, Church Point, La.

Piggott, W. O. Byrd, Lake Charles, La.

Pocahontas, George Meyer, Nashville, Ark.

Rector, 1st, A. C. Carraway, Smackover, Ark.

Rector, 4th St., John B. Shearer, Marksville, La.

Schugtown, D. J. McCammon, Texarkana, Ark.

Walnut Ridge, C. H. Farmer, Texarkana, Ark.

Marmaduke, Van Carter, Priddy, La.

FAYETTEVILLE DISTRICT

Rev. W. F. Cooley, District Superintendent

Alpena, Geo. Leo Glasgow, Dierks, Ark.

Bentonville, Robert L. Mader, Tahlequah, Okla.

Oakley Chapel, Raymond C. foot, Pollock, La.

Berryville, J. Ed Dunlap, Mena, Ark.

Centerton, W. S. Hollingsworth, Franklinton, La.

Decatur, O. D. Van Horn, Nolia, Mo.

Elm Springs, L. O. Lee, Centerville, Ark.

Eureka Springs, Kenneth McDowell, Many, La.

Farmington, E. J. Reaves, Fayetteville, Ark.

Fayetteville, Central, Virgil D. Morris, Alexandria, La.

Fayetteville, Wiggins Memorial, W. F. Mayo, Alexandria, La.

Gentry, R. A. Anderson, Hope, Ark.

Goshen, Roy Grant, Choudrant, La.

Green Forest, Alfred DeBlack, Camden, Ark.

Gravette, Fred A. Mead, Downsville, La.

Lincoln, Alfred I. Doss, Stephens, Ark.

Huntsville, The Rev. Mrs. Ed-

(Continued on page 5)

ARKANSAS METHODIST

THE DEVOTIONAL PAGE

REV. ROY I. BAGLEY, Editor

POEM OF THE WEEK

He came to my desk with quivering lip—
The lesson was done.
"Dear teacher, I want a new leaf," he said,
"I have spoiled this one."
I took the old leaf, stained and blotted,
And gave him a new one all unspotted,
And into his sad eyes smiled,
"Do better, now, my child."

I went to the throne with a quivering soul—
The old year was done.
"Dear Father, hast thou a new leaf for me?
I have spoiled this one."
He took the old leaf, stained and blotted,
And gave me a new one all unspotted,
And into my sad heart smiled,
"Do better, now, my child."

—Kathleen Wheeler

A NEW WAY BECKONS

TEXT: You have never gone over this road before. (Joshua 3:4)

D R. HARRY DENMAN told a group of ministers in Philadelphia, "This is high noon for the Twentieth Century." As we look backward over the years of the first half of the Twentieth Century there are many things that are pleasing. We have developed our technological skills so that we enjoy conveniences that were beyond our imagination at the beginning of the century. Great developments have been made in medical science that help to relieve physical suffering. And in almost any field that you want to go there are many things that have been accomplished that bring to us a sense of satisfaction.

On the other hand thoughtful men find a lot that is disturbing. With us giving ourselves over to materialism it can be readily recognized that many things ought to disturb us as we look backward over the first half of the Twentieth Century. We have come to rely more on gadgets than we have on God. We have trusted that the Good Life could be achieved through conveniences. Two great wars have been fought that stagger the wildest imagination of man. The age of prison inmates has been sliding downward until now teen-age is the average age for those incarcerated for major crimes. A rabid humanism has laid its grip upon us.

We all stand with a sense of another opportunity as we look upon the road ahead of us for this new year. How we travel this road is more dependent upon us than it is upon the road itself. A good and happy new year is found in the personal integrity and fidelity of each one

to the highest that he knows.

Hope must fire our hearts if we are to travel this road with any degree of satisfaction. A short time ago hope was the easiest thing in the world; now it is very difficult. We were saturated with a philosophy of inevitable progress. We believed in a kindly deity who no matter what happened everything would come out all right. We had an optimism that makes us look foolish now. We could sing "Every day in every way I'm getting better and better."

If we are going to have hope—a hope that is more than wishful thinking—then we must rethink our way of attaining it. Paul has a stairway that leads to hope and the steps are made up of "trouble, endurance, character, and hope." This hope he declares "will not disappoint us." He contradicts our modern attitude toward hope and lets us know that hope is built upon a firmer foundation than just a rosy situation. We commonly think that hopeless situations make people hopeless; but, the very opposite is true. Hopeless people create hopeless situations. And so one of the first qualities with which we will travel this new road is a genuine Christian hope that fires us with a zeal for "His kingdom on earth as it is in heaven." It is a hope that makes us know that if we fall in the battle there is the assurance that we have an abode with God.

This new road beckons but if we are to travel it with any degree of satisfaction we must have faith. We need to keep constantly reminding ourselves that faith is an activating force. It is an expulsive power of a new center of our loyalties that can-

not be bound with mere creeds. Faith is always impatient when men stop with merely stating what they believe. Faith pushes on into the frontiers exploring and claiming those frontiers for God. John in his Epistle sounds the keynote when he says, "Our faith is the victory that has triumphed over the world."

Faith always carries on its shoulders the crippled and plodding intellect. It compels the scientist to remain in his laboratory seeking the answers to questions that his faith assures is there. Faith constrains the Christian to live in his world assured that the answer to the devastating problems of any age has a solution. Faith is dynamite that blasts away at the forces of evil. It cannot tolerate skepticism and cynicism but crowns the effort of honest and sincere doubt with the laurels of satisfaction and understanding.

This new road beckons us but if we are to face it with any degree of satisfaction we must face it with courage. Foolishly we hide from life. We try to lose ourselves in a whirl of activity knowing all the time that we must come back and stand face to face with life itself. We have been kidding ourselves with a false anesthesia that has lulled the sensitiveness of our spirits into a complacency that has denied us of the true battle for righteousness.

Courage comes from the heart that is pure and sincere. Too often we have jested at the speech that speaks of, "he had the strength of ten because his heart was pure;" nevertheless, it is a truth that we need to reaffirm. Courage is not an injection that can be put into the veins of a man, it is a Presence that comes from within the depth of his soul.

It will take courage, more courage than we have ever had, to stand by our honest and sincere Christian convictions. It will take courage to pursue those convictions to their logical conclusions. We must be strong to face this new day that God has graciously given to us. This is an hour when the men of God must arise and prepare for the conquest of righteousness armed with love, mercy, and eternal truths.

Joshua was encamped with his people beside the Jordan River. The Ark of the Covenant was to go before them. This fact inspired the hearts of his followers and they were successful in entering the Promised Land. We too must realize that the presence of God will guide us each mile of the

(Continued in column 1)

PAGE THREE

WHAT IS VICTORIOUS LIVING?

What is victorious living? It is living in the power of the Holy Spirit, who is the source of all our strength and victory. It is living in the love of God, who is the source of all our joy and peace. It is living in the truth of the Bible, which is the source of all our wisdom and knowledge. It is living in the fellowship of the saints, who are the source of all our encouragement and support. It is living in the service of God, who is the source of all our purpose and meaning. It is living in the obedience of God, who is the source of all our freedom and liberation. It is living in the faith of God, who is the source of all our hope and confidence. It is living in the grace of God, who is the source of all our mercy and forgiveness. It is living in the glory of God, who is the source of all our honor and praise. It is living in the kingdom of God, who is the source of all our power and authority. It is living in the life of God, who is the source of all our eternal happiness and joy.

Y 17, 1952

NEWS AND NOTES ABOUT FACTS AND FOLKS

MRS. H. C. FREEZE has been elected director of the choir of the Huntington Avenue Church, Jonesboro. Rev. Elmus C. Brown is pastor.

THE METHODIST MEN of Nettleton have their project of putting in a ceiling and painting the annex to the church about completed.

REV. E. D. GALLOWAY, Hope District Superintendent, announces that Bishop Paul E. Martin has appointed Rev. L. A. Peters to the Hatfield Charge.

REV. LYMAN T. BARGER, pastor at Lepanto, will report for duty on February 15, at the Army Chaplain's School at Ft. Slocum, New York.

REV. HAROLD O. EGGENSPERGER, pastor of the First Methodist Church, Russellville, was elected president of the Russellville Ministerial Alliance at its meeting on Friday, January 11.

REV. J. ALBERT GATLIN, secretary of the Town and Country Commission of the North Arkansas Conference, was the speaker at the meeting of the Van Buren County Methodist Laymen on January 16 at Damascus.

REV. ARTHUR TERRY, pastor of the Asbury Methodist Church, Little Rock, was the guest speaker at the meeting of the Methodist Men's Fellowship at the First Methodist Church, Russellville, on Wednesday evening, January 16. Rev. Harold Eggensperger is the Russellville pastor.

HAMILTON MOSES, Arkansas Power and Light head and prominent Arkansas Baptist layman, was the featured speaker at the Methodist Men's Fellowship of the Altheimer Methodist Church on Tuesday evening, January 8. Rev. Harould Scott is the pastor at Altheimer-Wabbaseka charge.

REV. J. KENNETH SHAMBLIN, pastor of Pulaski Heights Methodist Church, Little Rock, will be the speaker at the meeting of the Methodist Men's Fellowship on Thursday, January 31, at the First Methodist Church of West Memphis. Brother Shambelin is a former pastor of First Church, West Memphis.

MRS. MARK F. VAUGHT, who suffered a stroke of paralysis on December 25, is recovering slowly in the Drennen Hospital, Stuttgart, and it is expected that she will be released in the near future to be removed to her home. Mrs. Vaught is the wife of Rev. Mark F. Vaught, pastor of the First Methodist Church, Stuttgart.

TOMMY THOMPSON, member of the Asbury Methodist Church, Little Rock, and member of the Asbury Board of Stewards, has been named Assistant to the Pastor, it has been announced by Rev. Arthur Terry, Asbury pastor. Mr. Thompson will begin his new duties February 15. Mr. Thompson has been associated for several years with the Arkansas-Louisiana Gas Co.

DR. WILLIAM E. TRICE, pastor of the University Methodist Church, Baton Rouge, La., was the guest speaker at the monthly meeting of the Methodist Men of

Asbury, Friday evening, January 18. Paul E. Speirer was chosen by the organization to serve as president during 1952. Other officers chosen include John B. Honea, Vice-president; Phil McDonnell, Secretary; Dr. Bryant B. Pake, Treasurer; and C. L. Tipton, chef.

REV. RALPH RUHLEN will join the Hendrix College teaching staff this month as instructor in religion and philosophy. A Methodist pastor for eight years, Mr. Ruhlen received an A. B. degree from Baker University and a B. D. degree from Garrett Biblical Institute. He has done considerable work toward his doctorate at Boston University. He succeeds George Avent, who left Hendrix this year to become director of the Wesley Foundation at the University of Houston, Houston, Texas.

REV. MARTIN BIERBAUM, pastor of St. Paul's Methodist Church, Fort Smith, and North Arkansas Conference Missionary Secretary, returned recently from the annual meeting of the General Board of Missions and Church Extension at Buck Hill Falls, Pa. Mr. Bierbaum was one of the eight missionary secretaries invited this year to attend the meeting as a guest of the General Board. He reports a most inspiring session, and announced that Bishop Martin has secured Dr. C. H. Conley, returned missionary from the Gujarat Conference, India, Arkansas Methodism's Advance Special Area, to be the speaker in a series of District Rallies in the North Arkansas Conference February 17-24, exact location of the rallies to be announced soon.

FIRST REPORT OF CHRISTMAS OFFERING

The first report of the Christmas Offering for The Methodist Children's Home will appear in the issue of February 7 of **The Arkansas Methodist**. Offerings must reach us by January 31 to be included in this report.—T. T. McNeal, Director.

THE HARVEST IS HERE

(Continued from page 1)

enders and programs, but in contributing leadership and actively supporting the U.E.M. program, has been a contributing factor in the success. The cooperation, the leadership, and the backing which the General Board of Evangelism has contributed has given the program an ever wider aspect of connectionalism, and without a doubt the relationship has enriched the program all along the line. We know also of ministers who have borne efficiently heavy responsibilities in planning and directing this program on the top level, and we have certainly been impressed with the willingness with which they have accepted these additional responsibilities. Bishop Martin has been a real inspiration as he has given general direction to the whole program throughout the Area. All of this leadership has been readily available because of the connectional system of Methodism.

We firmly believe that God has been and is now working through ministers and laymen alike to face persons without Christ with an opportunity to accept Christ. We have worked and planned together. God is blessing our efforts abundantly.

BISHOPS SPEAK OUT ON VATICAN ISSUE

Atlantic City, N. J.—The Council of Bishops of The Methodist Church, meeting here, responded with a statement to the newspaper report of January 14 that President Truman will submit another name in place of General Mark W. Clark as U. S. Ambassador to the Vatican. The following action was taken at the last session of their five-day, semi-annual meeting:

"We are determined to defend American religious and civil liberty against all attacks from all quarters. We shall resist all attempts of the Roman Catholic hierarchy to breach the wall that separates church and state, to gain special privilege, and to secure public funds for the support of sectarian institutions.

"We are unalterably opposed to the appointment of anyone, at any time, or from any place, as an Ambassador from the United States to the Vatican. This is an issue of principle, not of persons. It is but to compound a blunder to name a substitute for General Clark.

"We trust the Pope and the President will understand that Americans want religious liberty for all and special privilege for none. We refuse to compromise American convictions in order to appease a Roman hierarchy."

THE RACING COMMISSION REVERSES ITS DECISION

(Continued from page 1)

This action came only a day preceding an election on the race track issue in Crittenden County. Our forms went to press while the election was being held.

The better citizenship of Arkansas appreciates the active opposition to this matter by the good people of Crittenden County. Governor McMath is to be commended for the positive stand he has taken in the fight. Whatever prompted the action, the Commission has done Arkansas a real service in reversing its former decision.

Opposition to Dixie Downs revived also the smoldering opposition to the race track at Hot Springs. It is quite a probability that the final results of the fight will be action by the people which will make illegal all race track gambling in Arkansas.

The Arkansas Methodist

An Official Publication of
The Arkansas-Louisiana Episcopal Area
PUBLISHED EVERY THURSDAY
Except the Weeks of July 4 and December 25
SUBSCRIPTION PRICE, \$1.50 PER ANNUM
Retired Ministers and Wives of Deceased Ministers
of the Little Rock and North Arkansas Conference
Complimentary
Office of Publication, 1136-1137 Donaghey Building
LITTLE ROCK, ARKANSAS

E. T. WAYLAND Editors and Business Mgrs.
ANNIE WINBURNE Assistant to Editors

CONTRIBUTING EDITORS: H. O. Bolin, Mrs. Ewing
T. Wayland, Roy I. Bagley, Forney Hutchinson.

OWNED, MANAGED AND PUBLISHED BY
THE METHODIST CHURCHES OF
ARKANSAS AND LOUISIANA
COMMISSIONERS:

Little Rock Conference—J. S. M. Cannon, Charles W. Richards, C. C. Landers, Fred W. Schwendemann, Arthur Terry, Aubrey G. Walton, Burney Wilson.
Louisiana Conference—To be named June, 1952.
North Arkansas Conference—John Bayliss, W. Glenn Bruner, J. G. Moore, Joe Pierce, I. L. Claud, R. J. Rice, J. William Watson.

Entered as second-class matter, January 31, 1908, at the Post Office at Little Rock, Ark., under the Act of Congress of March 3, 1879.

When asking for change of address, please include charge key number, former address, new address and name of pastor.

Articles other than editorials do not necessarily reflect the opinions of the editors of the Arkansas Methodist.

ARKANSAS METHODIST

**ASSIGNMENTS OF GUEST
MINISTERS IN UNIT "B"
U.E.M.**

(Continued from page 2)

win Brock, Marion, La.
DeLaney, J. Albert Gatlin, Con-
way.
Pea Ridge-Brightwater, E. W.
Eaton, Muldrow, Okla.
Prairie Grove, M. E. Scott,
Stamps, Ark.
Rogers, Jack S. Wilkes, Musko-
gee, Okla.
Siloam Springs, Jerome Cain,
Bogalusa, La.
Springdale, First, J. H. Sewell,
Franklington, La.
Springdale, Wesley, James Rob-
ert Scott, Bearden, Ark.
Springtown, Douglas Dexter,
Bingen, Ark.
Highfill, J. R. Callicott, Lockes-
burg, Ark.
Sulphur Springs, C. Raymond
Cooley, Westville, Ark.

FORREST-CITY DISTRICT

Rev. Ethan Dodgen, District
Superintendent

Brinkley, Jack Cooke, Cough-
atta, La.
Clardendon, Hugh L. Baker,
Jr., Donaldsonville, La.
Colt, C. J. T. Cotten, Mont-
gomery, La.
Forrest Chapel, Claud Clark,
Hope, Ark.
Wesley Chapel, J. W. Glass,
Crawfordsville, Ark.
Cotton Plant, E. L. Tatum, Mor-
gan City, La.
Earle, F. L. Durham, Berwick,
La.
Elaine, W. M. Allen, Haughton,
La.
Forrest City, E. D. Galloway,
Hope District.
Helena, Fred R. Harrison, Tex-
arkana, Ark.
Holly Grove, Virgil Bell, Tex-
arkana, Ark.
Hughes, E. H. Hook, Mt. Sequo-
yah.
Marianna, W. L. Watson,
Shreveport, La.
Marion, Minns S. Robertson,
Melville, La.
Marvell, A. E. Wingfield, Eros,
La.
Parkin, James Christie, Alex-
andria, La.
Vandale, W. M. Crowe, Dodd-
ridge, Ark.
West Helena, W. O. Lynch,
Jonesboro, Ark.
Wheatley, Rex Squyres, Hall
Summit, La.
Round Pond, C. T. Rather, La-
fayette, La.
Wynne, E. R. Haug, Franklin,
La.

CONWAY DISTRICT

Dr. C. M. Reves, District
Superintendent

Atkins, Rev. Kenneth Rorie,
Mooringsport, La.
Conway, First Church, Rev.
John J. Rasmussen, Shreveport,
La.
Conway, Wesley, Rev. Ira A.

Brumley, Conway, Ark.
Danville, Rev. S. L. Lantrip,
Belcher, La.
Dardanelle, Rev. Preston Hol-
ley, Ducach, La.
Dover, Rev. Tom Kinslow, Rus-
sellville, Ark.
Morrilton, Rev. R. R. Branton.
NORTH LITTLE ROCK:
First Church, Rev. B. C. Taylor,
New Orleans, La.
Gardner, Rev. Alfred Brown,
Crowley, La.
Levy, Rev. Douglas McGuire,
Ruston, La.
Sylvan Hills, Rev. Cleburne
Quaid, Shreveport.
Washington Ave., Rev. A. S.
Hurley, New Orleans, La.

Perry-Perryville, Rev. Henry
Stroup, Perry, Ark.
Russellville, Rev. George W.
Pomeroy, Ruston, La.

SEARCY DISTRICT

Rev. Coy E. Whitten, District
Superintendent

Antioch, John W. Keller, New
Orleans, La.
Augusta, Ira W. Flowers, Min-
den, La.
Bald Knob, A. Leroy Dicker-
son, Thibodeaux, La.
Beebe, J. W. Matthews, Jr., New
Orleans, La.
Cabot, T. O. Rorie, Jr., New
Orleans, La.
Clinton, Ross Pickett, Houma,
La.
Patterson (DeView Ct.), Paul
Cassells, Glenmora, La.
Griffithville, T. O. Carlstrom,
New Orleans, La.
Harrison, W. Neill Hart, El
Dorado, Ark.
Heber Springs, T. T. McNeal,
Little Rock, Ark.
Jacksonville, H. G. Williamson,
Minden, La.
Judsonia, H. M. Law, Doyline,
La.
Marshall, Cagle E. Fair, Junc-
tion City, Ark.
McCrary, Clyde E. Frazier, Jr.,
New Orleans, La.
McRae, S. B. Mann, Norphlett,
Ark.
Newton County (Jasper), J. D.
Montgomery, El Dorado, Ark.
Searcy, Sam Nader, Houma, La.
Valley Springs, G. C. Bailey,
Louann, Ark.

ARKADELPHIA DISTRICT

Rev. J. M. Hamilton,
Superintendent

Malvern, Rev. George Harbuck,
Mansfield, La.
Gurdon, Rev. R. M. Bentley,
Cedar Grove, La.
Oaklawn, Hot Springs, Rev. F.
C. Collins, Plain Dealing, La.
Mount Ida, Rev. W. B. Shaw,
Shreveport, La.
First Church, Hot Springs, Rev.
Jolly B. Harper, Alexandria, La.
Morning Star, Hot Springs,
Rev. J. A. Ailor, Montgomery,
La.
Sparkman-Sardis, Rev. R. E.
Walton, Colfax, La.

Okolona, Rev. J. B. McCann,
Palestine, La.
Arkadelphia, Rev. Leonard
Cooke, Shreveport, La.
Pullman Heights, Hot Springs,
Rev. C. R. Hardy, Shreveport, La.
Traskwood, Rev. H. C. Nors-
worthy, Bossier City, La.
Bismarck, Rev. J. J. Carraway,
Shreveport, La.
Murfreesboro, Rev. Otis W.
Spinks, Gena, La.
Tigert, Hot Springs, Rev. E. A.
Keasler, Trout, La.
Grand Avenue, Hot Springs,
Rev. P. M. Carraway, Winfield,
La.
Manchester Church, Dalark
Circuit, Rev. W. H. Carroll, Olla,
La.
Glenwood, Rev. Narau Far-
wood, Urania, La.
Delight, Rev. John G. Gieck,
Waterproof, La.
Fountain Lake, Hot Springs,
Rev. A. L. Smith, St. Joseph, La.
Keith Memorial, Malvern, Rev.
Ira A. Love, Wisner, La.
Amity, Rev. A. W. Coody, Gil-
bert, La.

BATESVILLE DISTRICT

Rev. S. B. Wilford,
Superintendent

Batesville, Central Avenue, M.
W. Merrill, New Orleans, La.
Batesville, First Church, Dr.
Homer Vanderpool, Baton Rouge,
La.
Calico Rock, Rev. J. R. Wood-
ward, Boyce, La.
Cave City, Rev. Aubra O.
Hayes, Evening Shade.
Cotter, Rev. J. A. Jones, Le-
compte, La.
Salado, Rev. Brady Cook, Mar-
maduke.
Melbourne, Rev. E. E. Sylvest
Sr., Lutch, La.
Mountain Home, Rev. E. J.
Barksdale, Oakdale, La.
Norfolk, Rev. R. E. Carter,
Minden, La.
Mountain View, Rev. David T.
Lowery, Kenner, La.
Newark, Rev. W. W. Allbright,
Heber Springs.
Newport, First Church, Rev.
Elmer Thomas, Magnolia.
Newport, Umsted Memorial,
Rev. E. R. Thomas, Denham
Springs, La.
Pleasant Plains, Rev. G. B. Pix-
ley, Magnolia.
Salem, Rev. Robert McCam-
mon, Plaquemine, La.
Swifton-Alicia, Rev. W. B.
Savage, Waldo.
Tuckerman, Rev. J. L. Tucker,
DeQueen.
Viola, Rev. C. E. Lawrence,
Taylor.
Yellville, Rev. C. D. Pinkard,
Lottie, La.

JONESBORO DISTRICT

Rev. E. B. Williams,
Superintendent

Black Oak, Rev. George Har-
kins, Clinton, La.
Blytheville, First Church, Rev.
A. W. Townsend Jr., Shreveport,
La.

Blytheville, Lake Street, Rev.
M. D. Felder, Monroe, La.
Blytheville, West Parish, Rev.
Clarence H. Snelling, New Or-
leans, La.
Bono, Rev. L. M. Sawyer, Sib-
ley, La.
Brookland, Rev. D. P. Durbin,
Heflin, La.
Caraway, Rev. W. H. Sanders,
Merryville, La.
Dell, Rev. Al A. Collins, Lake
Providence, La.
Whitten, Rev. T. A. Brown,
West Monroe, La.
Harrisburg, Rev. J. F. Kilpat-
rick, Leesville, La.
Joiner, Rev. Harold Hine,
Greensburg, La.
Jonesboro, First Church, Rev.
George Pearce Jr., DeRidder, La.
Jonesboro, Fisher Street, Rev.
F. L. Hearne, Claiborne, La.
Jonesboro, Huntington Avenue,
Rev. W. R. Wendt, Bossier City,
La.
Keiser, Rev. Sydney A. Seegers,
Logansport, La.
Lake City, Rev. L. A. Carring-
ton, Benton, La.
Leachville, Rev. W. R. Irving,
Jackson, La.
Lepanto, Rev. Luther H. Booth,
New Orleans, La.
New Hope, Rev. Irl S. Lancast-
er, Greenwood, La.
Pleasant Valley, Rev. J. T. Gar-
rett, Chatham, La.
Luxora, Rev. Dan Anders,
Ringgold, La.
Manila, Rev. R. H. Staples,
West Monroe, La.
Marked Tree, Rev. J. H. Bow-
don, Shreveport, La.
Calvary, Rev. J. R. Strozier,
Ida, La.
Monette, Rev. Sam S. Holla-
day, Columbia, La.
Mount Carmel, Rev. Bruce H.
Bean, Princeton.
Nettleton, Rev. Howard Hud-
son Jr., Pioneer, La.
Osceola, Rev. R. B. Moore,
Camden.
St. John, Rev. E. Lee McKay,
St. Francisville, La.
Trumann, Rev. W. C. Mason,
West Monroe, La.
Turrell, Rev. H. T. Isgitt, Con-
verse, La.
Tyronza, Rev. Ralph Clayton,
McGehee.
Hickory Ridge, Rev. T. M. Lan-
caster, Greenwood, La.
Weona, Rev. Rayford L. Diffie,
Chidester.
Wilson, Rev. Clark W. Bell,
Gretna, La.
Yarbro, Rev. S. P. Emanuel,
Grayson, La.

GOWNS
Pulpit and Choir
Headquarters for
RELIGIOUS SUPPLIES

Church Furniture • Stoles
Embroideries • Vestments
Hangings • Communion
Sets • Altar Brass Goods

National

Φ

(Continued from last week)

ARKANSAS METHODIST

(Continued on page 11)

LITTLE ROCK CONFERENCE TREASURER'S REPORT

(Continued from page 10)

Charge & Church	Bishops Fund	Conference Claimants	Benevolences	4th Sunday Offerings	Dist. Supt. Salary Fund
MINIMUM SALARY—CHURCHES:					
Dermott \$20.00, Dumas \$45.00, Eudora \$36.00, Fordyce \$100.00, Hamburg \$40.00, Faustina \$4.00, Hampton \$20.00, Harrell \$6.00, Lake Village \$33.35, McGhee \$50.00, Monticello \$54.00, Parkdale \$24.00, Montrose \$12.00, Portland \$11.50, Star City \$30.00, Strong \$24.50, Newton's Chapel \$8.00, Tillar \$13.00, Winchester \$8.00, Warren \$56.00, Martin's Chapel \$1.00, Kelso \$4.00, Miller's Chapel \$6.00, Wilmot \$30.00.					
TOTAL					\$626.35
GENERAL ADMINISTRATION AND JURISDICTIONAL CONF. EXPENSE FUND:					
Dermott \$11.25, Green Hill \$3.00, Lacey \$2.00, Prairie Chapel \$3.00, Valley \$2.00, Dumas \$60.00, Eudora \$17.50, Fordyce \$50.00, Hamburg \$25.00, Faustina \$2.50, Hampton \$5.50, Harrell \$5.00, Sardis, Hermitage Ct. \$1.00 (for 1950-51), Kingsland \$5.00, Lake Village \$26.72, McGhee \$27.50, Monticello \$42.50, Good Hope \$2.00, Hebron \$2.00, New Edinburg \$3.00, Wagon \$2.00, Wheelen Springs \$1.00, Parkdale \$3.00, Montrose \$7.50, Portland \$10.00, Star City \$11.00, Strong \$5.00, Chambersville \$2.00, Stony Point \$1.00, Temperance Hill \$2.00, Thornton \$5.00, Newton Chapel \$5.00, Tillar \$20.00, Warren \$49.49, Kelso \$2.00, Mt. Pleasant \$3.00, Wilmer \$2.00, Wilmot \$10.00.					
TOTAL					\$410.46
ADVANCE FOR CHRIST OFFERINGS:					
Fordyce \$450.00, Strong \$32.50, Wilmot \$94.00, various churches in District \$1,000.00.					
TOTAL					\$1576.50
AREA FUND:					
Crossett \$15.00, Dermott \$2.50, Eudora \$5.00, Fordyce \$10.00, Hampton \$2.00, Harrell \$2.00, Lake Village \$4.20, McGhee \$10.00, Monticello \$7.50, Montrose \$1.00, Portland \$5.00, Star City \$5.00, Strong \$2.00, Warren \$15.00, Martins Chapel \$1.00.					
TOTAL					\$87.20
WESLEY FOUNDATION FUND:					
Wilmot Church					\$12.50
WORLD-WIDE COMMUNION OFFERING:					
Dermott \$25.00, Dumas \$30.83, Eudora \$19.71, Fordyce \$72.45, Hampton \$9.00, Harrell \$6.00, Huttig \$9.45, Kingsland \$20.00, Lake Village \$28.10, Parkdale \$11.00, Montrose \$7.75, Portland \$22.10, Star City \$15.00, Strong \$10.00, Thornton \$10.00, Newton Chapel \$11.00, Selma \$5.00, Tillar \$29.95, Winchester \$7.00, Union \$10.00, Kelso \$7.00, Watson \$18.00.					
TOTAL					\$434.94
KANSAS CITY FLOOD RELIEF:					
Dumas \$36.18, Lake Village \$20.42, Strong \$10.00, Wilmot \$34.00, Miller's Chapel \$6.00.					
TOTAL					\$106.60
GRAND TOTAL FOR DISTRICT					\$21,120.26
PINE BLUFF DISTRICT					
ALMYRA	\$ 22.00	\$ 275.00	\$	\$ 210.00	\$ 125.00
ALTHEIMER-WABBASEKA:					
Altheimer	8.00	45.00		60.00	35.00
Wabbaseka	8.00	45.00	60.00		35.00
Whitehall	6.00	30.00		35.00	38.00
TOTAL	22.00	120.00	60.00	95.00	108.00
BAYOU METO CT.					
Bayou Meto	16.00	99.00	88.00		50.00
Brewer	5.00	33.00			30.00
Lodges Corner	16.00	99.00			40.00
TOTAL	37.00	231.00	88.00		120.00
CARTHAGE CIRCUIT:					
Carthage	20.00	98.00		46.00	100.00
Mt. Zion	1.00	10.00		10.00	10.00
Tulip	2.00	12.00		12.00	12.00
TOTAL	23.00	120.00		68.00	122.00
DEWITT	43.75	100.00			250.00
ENGLAND	74.37		450.00		210.00
GILLET	26.25	180.00		187.00	150.00
GOOD FAITH	38.50	246.00	230.00		220.00
GRADY-GOULD:					
Gould	13.00	45.00		20.00	22.00
Grady	30.00	75.00	75.00		90.00
Crigger	5.00	24.00	30.00		23.00
TOTAL	48.00	144.00	105.00	20.00	140.00
HUMPHREY	35.00			80.97	86.50
KEO-TOMBERLIN-HUMNOKE:					
Keo	12.00	74.00		97.50	67.50
Humnoke	5.00	40.00	40.00		35.00
Tomberlin	10.00	30.00		32.00	33.00
TOTAL	27.00	144.00	40.00	129.50	135.50
LEOLA CT.					
Hunters Chapel	3.00	7.00	20.00		10.00
Leola	17.00	70.00	107.00		100.00
TOTAL	20.00	77.00	127.00		110.00
LITTLE PRAIRIE CT.					
Camp Shed	15.00	101.00		95.00	92.00
DeLuce	6.00	5.00			24.00
LaFargue		5.00		12.00	6.00
Prairie Union	11.00	10.00	12.50	5.07	31.50
TOTAL	32.00	121.00	12.50	112.07	153.50
PINE BLUFF CHURCHES:					
CARR MEMORIAL	63.00	304.00		410.00	220.00
FIRST CHURCH	65.00	525.00	1800.00		375.00
HAWLEY MEMORIAL	52.50	160.00		175.00	150.00
GLENDAL		36.00			
LAKESIDE CHURCH	50.00			1136.59	800.00
RISON	21.00	132.00		187.50	120.00
ROE CIRCUIT:					
Hunter	5.00				
Shiloh	5.00	15.00		10.00	15.00
Ulm	5.00	15.00		25.00	15.00
TOTAL	15.00	30.00		35.00	30.00
ROWELL CIRCUIT:					
Center	1.25	6.25			
Prosperity	6.00	20.00	3.00	15.00	7.50
Union	8.00	25.00	6.00	26.53	30.00
TOTAL	15.25	51.25	9.00	41.53	55.00
ST. CHARLES CIRCUIT:					
Pleasant Grove	10.00				
St. Charles	19.00			31.00	
TOTAL	29.00			58.50	
SHERIDAN CHARGE:					
New Hope	1.75	3.50	15.00		5.00
Sheridan	57.00	105.25		100.00	162.00

JANUARY 24, 1952

Charge & Church	Bishops Fund	Conference Claimants	Benevolences	4th Sunday Offerings	Dist. Supt. Salary Fund	
Total						
SHERRILL-TUCKER:	53.75	108.75	15.00	100.00	167.00	
Sherrill	32.00				90.00	
Tucker	3.50	22.00	50.00	11.33	20.00	
Redfield				13.42		
Total	35.50	22.00	50.00	24.80	110.00	
FIRST CHURCH—STUTTGART	21.87	174.59	195.84	97.92	124.98	
GRAND AVENUE—STUTTGART	40.00	320.00				
SULPHUR SPRINGS CT.:					235.00	
Center Grove			9.60			
Sulphur Springs		20.00				
Total		20.00	9.60		7.00	
SWAN LAKE	21.00	132.00		59.17	7.00	
DISTRICT TOTALS	\$ 936.74	\$3773.99	\$3191.94	\$3170.05	\$4091.48	
MINIMUM SALARY FUND—PASTORS:						
Bayou Meto \$9.00, Carr Memorial \$18.00, Lakeside \$30.00, Rison \$24.00, Grand Avenue—Stuttgart \$25.00, Swan Lake \$24.00.						
TOTAL					\$120.00	
MINIMUM SALARY FUND—CHURCH:						
Almyra \$50.00, Altheimer \$8.00, Wabbaseka \$8.00, Bayou Meto \$18.00, Lodges Corner \$18.00, Carthage \$25.00, DeWitt \$50.00, England \$35.00, Gillett \$30.00, Good Faith \$44.00, Crigger \$3.00, Gould \$14.00, Grady \$18.00, Humnoke \$14.00, Keo \$13.50, Tomberlin \$12.00, Leola \$4.00, Carr Memorial \$72.00, First Church, Pine Bluff \$75.00, Hawley Memorial \$60.00, Rison \$24.00, Sheridan \$65.00, Sherrill \$18.00, Tucker \$8.00, Grand Avenue, Stuttgart, \$25.00, Swan Lake \$48.00.						
TOTAL					\$309.50	
GENERAL ADMINISTRATION AND JURISDICTIONAL CONF. EXPENSE FUND:						
Almyra \$20.00, Altheimer \$9.00, Wabbaseka \$9.00, Whitehall \$4.00, Bayou Meto \$10.00, Lodges Corner \$10.00, Carthage \$12.00, DeWitt \$30.00, England \$30.00, Gillett \$12.50, Good Faith \$15.00, Crigger \$4.00, Gould \$6.00, Grady \$12.00, Keo \$5.00, Tomberlin \$5.00, Hunters Chapel \$4.00, Leola \$10.00, Camp Shed \$5.00, Prairie Union \$5.00, Carr Memorial \$40.00, First Church, Pine Bluff \$5.00, Memorial \$25.00, Lakeside \$50.00, Rison \$12.51, Hunter \$3.00, Shiloh \$3.00, Ulm \$3.00, Prosperity \$12.00, Pleasant Grove \$2.00, St. Charles \$5.00, New Hope \$3.00, Sheridan \$30.00, Sherrill \$20.00, Tucker \$2.50, First Church, Stuttgart \$15.00, Grand Avenue, Stuttgart, \$40.00, Swan Lake \$18.00.						
TOTAL					\$604.01	
ADVANCE FOR CHRIST OFFERINGS:						
Almyra \$180.00, Altheimer \$35.00, Wabbaseka \$35.00, Whitehall \$10.00, Bayou Meto \$63.00, England \$300.00, Gillett \$144.00, Good Faith \$50.00, Grady \$25.00, Tomberlin \$10.00, Carr Memorial \$254.14, Lakeside \$100.00, New Hope \$6.94, Swan Lake \$10.50.						
TOTAL					\$1223.58	
AREA FUND:						
Altheimer \$3.00, Wabbaseka \$3.00, Whitehall \$2.00, Bayou Meto \$2.00, Lodges Corner \$2.00, Carthage \$2.00, DeWitt \$5.00, England \$3.00, Gillett \$2.50, Good Faith \$5.00, Crigger \$2.00, Gould \$1.00, Grady \$2.00, Humnoke \$2.00, Keo \$2.00, Tomberlin \$2.00, Hunter's Chapel \$1.00, Leola \$2.00, Camp Shed \$2.00, LaFargue \$1.00, Prairie Union \$1.00, Carr Memorial \$6.00, First Church, Pine Bluff \$9.00, Hawley Memorial \$3.00, Lakeside \$12.00, Rison \$1.50, Hunter \$3.00, Shiloh \$2.00, Ulm \$2.00, Prosperity \$2.00, Union \$2.00, Pleasant Grove \$2.00, St. Charles \$3.00, New Hope \$1.00, Sheridan \$5.00, Sherrill \$3.00, Tucker \$1.00, First Church, Stuttgart \$8.00, Grand Avenue, Stuttgart \$10.00, Swan Lake \$3.00.						
TOTAL					\$131.00	
WESLEY FOUNDATION FUND:						
Gillett \$112.50, Rison (for 1950-51) \$10.00.						
TOTAL					\$122.50	
METHODIST STUDENT DAY OFFERINGS:						
Carr Memorial Church, Pine Bluff						
TOTAL					\$110.50	
WORLD-WIDE COMMUNION OFFERINGS:						
Almyra \$3.80, Carthage \$12.00, England \$30.00, Good Faith \$10.00, Keo \$7.00, Leola \$8.30, Carr Memorial \$30.00, Lakeside \$55.10, Sheridan \$10.00, Sherrill \$20.00, First Church, Stuttgart \$32.90, Grand Avenue \$66.35, Center Grove \$2.00.						
TOTAL					\$287.45	
GRAND TOTAL FOR DISTRICT						
					\$18,582.74	
RECAPITULATION OF RECEIPTS FROM THE LITTLE ROCK CONFERENCE FOR PERIOD JUNE 15, 1951 THROUGH JANUARY 5, 1952						
District	Bishops Fund	Conference Claimants	Benevolences	Fourth Sunday Offerings	Dist. Supt. Salary Fund	
Arkadelphia	\$ 788.93	\$ 4,223.51	\$ 5,285.17	\$ 1,745.98	\$ 3,797.93	
Camden	1,150.38	6,404.90	4,430.44	5,890.72	4,904.18	
Hope	606.10	3,196.00	5,301.85	2,129.75	3,428.50	
Little Rock	1,256.32	6,318.95	12,108.33	776.97	5,601.55	
Monticello	825.21	5,032.69	3,412.93	4,065.57	4,332.90	
Pine Bluff	936.74	3,773.99	3,191.94	3,170.05	4,091.48	
TOTAL	\$ 5,563.68	\$28,949.95	\$34,730.66	\$17,779.04	\$26,156.54	
District	Gen'l. Adm. & Jurisdictional Conf. Exp. Fund	Minimum Salary Fund (Pastor)	Min. Salary Fund (Church)	Area Fund	Advance For Christ Offerings	
Arkadelphia	\$ 541.14	\$ 172.25	\$ 765.67	\$ 97.00	\$2,353.87	
Camden	797.10	213.95	954.75	128.20	306.05	
Hope	497.65	82.25	480.75	62.50	533.25	
Little Rock	835.46	322.00	968.60	172.73	2,332.18	
Monticello	440.46	156.50	636.35	87.20	1,576.50	
Pine Bluff	604.01	130.00	809.50	131.00	1,223.58	
TOTAL	\$3,715.82	\$1,076.95	\$4,615.62	\$ 678.63	\$8,335.43	
District	Wesley Foundation	Methodist Student Day	World-Wide Communion	Kansas City Flood Relief	Race Relations	Grand Total of Receipts
Arkadelphia	\$ 276.00	\$ 15.00	\$ 549.28	\$ 33.50	\$	\$ 20,655.23
Camden			615.29	20.00		25,815.96
Hope	275.00		561.82	25.00	300.00	17,480.42
Little Rock	3,874.31		743.27	28.00		36,338.67
Monticello	12.50		434.94	106.60		21,120.26
Pine Bluff	122.50	110.50	287.45			18,582.74
TOTAL	\$4,560.31	\$125.50	\$3,192.05	\$213.10	\$300.00	\$139,993.28
—C. E. HAYES, Treasurer Little Rock Conference January 7, 1952						

—C. E. HAYES, Treasurer
Little Rock Conference
January 7, 1952



Area Methodist Circulation Campaign



REPORT NO. 2—THROUGH SATURDAY NOON, JANUARY 19, 1952

Not
New Ren. Due Total

ARKANSAS METHODIST

BATESVILLE DISTRICT—Quota 935

Batesville—Central Ave., David Conyers	5	66	71*
Batesville—First Ch., E. G. Kaetzell	23	89	6 118**
Bethesda-Cushman, Grover Sutherland	9	24	33
Calico Rock Ct., L. K. Wilson	4	19	2 25
Cave City-Sidney, James Smith	6	23	29**
Cave City Ct., Kera Johnson	5	11	16
Charlotte Ct., T. O. Love	6	12	3 21
Cotter, E. W. Faulkner	5	22	27**
Desha Ct., Hilman Byram	4	16	21
Evening Shade Ct., Aubra Hayes	5	38	1 44**
Melbourne, Y. D. Whitehurst	12	38	2 52**
Moorefield-Asbury, W. W. Allbright	10	25	1 36**
Mountain Home Parish, J. C. Wilcox	13	28	1 42
Mountain View, M. A. Graves	5	17	2 24**
Newark, B. L. Wilford	8	31	39*2
Newport First Ch., Guy C. Ames	7	63	4 74
Newport Umsted Mem., M. L. Kaylor	3	30	2 35**
Salem, Maurice Lanier	4	33	37**
Sulphur Rock	3	5	4**
Swift-Alicia, J. E. Linam	9	35	44**
Tuckerman, Golder Lawrence	4	57	1 62**
Viola Ct., Carl Strayhorn	1	15	16
Weldon-Tupelo, W. L. Dillon	1	1	1
Yellville Parish, Theron McKisson	6	19	1 26**
TOTALS	157	717	26 900

CONWAY DISTRICT—Quota 1319

Atkins, George Stewart	10	26	1 37**
Bellville-Havana, Ed Hollenbeck	22	2	24**
Bethel-Cato, J. W. Workman	5	16	21**
Conway First Ch., Joel Cooper	65	68	23 156
Conway Wesley Mem., J. R. Shelton	13	28	1 42**
Danville, H. C. Minnis	33	33	33*
Dardanelle, Ray L. McLester	10	43	2 55**
Dardanelle Ct., Frank Weather- ford	8	16	24**
Dover-London, Elvis Wright	8	20	28**
Gravelly Ct., Paul D. Davis	6	13	19
Greenbrier Ct., C. E. Martin	14	5	19**
Morrilton First Ch., H. J. Couchman	21	100	121**
Morrilton Ct. No. 1, A. A. Noggle	3	21	24**
Morrilton Ct. No. 2, Vernon Paysinger	12	4	16
Naylor Ct., Thomas Nation	10	6	2 18**
N. L. First Ch., Wm. T. Watson	12	170	182**
N. L. Gardner Mem., I. Bridenthal	20	80	2 102
N. L. Levy, Raymond Dorman	12	35	1 48
N. L. Sylvan Hills, Wm. Wilder	12	13	25**
N. L. Washington Ave., I. L. Claud	4	55	59*
Oppelo, James Beale	1	13	14**
Perry-Perryville, H. A. Stroup	1	15	17
Perry County, Wm. Yarbrough	8	8	8
Plainview, David Crouch	4	26	30**
Plummerville, Wm. Walker	9	25	34*2
Pope County Ct., Thomas Kinslow	1	20	21**
Pottsville, Wm. C. Hightower	13	22	35**
Russellville, Harold Eggen- sperger	14	91	105
Salem, Fred Mooring	4	9	13**
Vilonia, Maurice Webb	5	23	33*2
Vilonia Ct., J. M. Kitchens	2	5	7
TOTALS	299	1036	35 1370**

FAYETTEVILLE DISTRICT—Quota 1167

Alpena, Frank Shell	4	15	3 22**
Avoca, W. C. Hutton	3	11	14
Bentonville, Hubert Pearce	4	73	4 81**
Bentonville Ct., R. L. Ritter	6	12	2 20
Berryville, Edwin Dodson	6	39	1 46**
Centerion Ct., Charles Wages	7	26	1 34**
Cincinnati, E. J. Reaves	5	4	9*
Decatur, O. R. Findley	13	13	13**
Elm Springs, Woodrow Woods	6	46	52**
Eureka Springs, Wm. A. Stewart	1	1	1
Farmington Ct., A. L. Riggs	8	15	23**
Fayetteville, Central, D. L. Dykes	3	1	4
Fayetteville, Wiggins Mem., Arnold Simpson	8	30	1 39*
Gentry, O. L. Cole	9	34	2 45**
Gravette, H. W. Jinske	7	18	2 27**
Green Forest, C. H. Harvison	3	24	1 28**
Lincoln, Thos. R. Whiddon	13	24	2 39**
Madison County No. 1, Kermit Van Zant	6	53	2 61**
Madison County No. 2, James Weatherford	2	15	17*
Morrow-Evansville, Walter Pennell	3	15	18*2
Pea Ridge-Brightwater, Geo. J. Kleebe	8	22	30
Prairie Grove, S. O. Patty	4	63	1 68**
Siloam Springs, Allen D. Stewart	20	65	7 92
Springdale Wesley, J. W. Workman, Jr.	8	3	2 13

Not
New Ren. Due Total

Sulphur Springs, O. W. Barbaree	2	16	1 19
Viney Grove, Wm. D. Gray	6	6	6
Winslow, Chaplain J. A. Burris	4	5	1 10**
TOTAL	149	649	33 831

FORREST CITY DISTRICT—Quota 1222

Aubrey, J. C. Richey	10	39	2 51**
Brinkley, Jesse Johnson	12	77	89**
Clarendon, G. B. Ames	26	22	1 49**
Colt Ct., L. L. Langston	2	23	35
Cotton Plant, J. R. Chandler	6	20	4 40**
Crawfordsville, J. W. Glass	4	29	2 35**
Earle, L. F. LaFavers	3	29	32
Elaine, Glenn Bruner	8	46	1 55**
Forrest City, Raymond Franks	11	143	3 157**
Havnes-LaGrange, J. O. Davis	8	12	20**
Helena, E. J. Holifield	6	110	3 119**
Holly Grove, C. P. McDonald	1	35	36**
Marianna, James T. Randle	16	74	4 94**
Marion, Alf A. Eason	36	65	191*3
Marvell, J. L. Pruitt	13	53	66*2
Parkin, H. F. McDonald	7	15	3 25
Vandale, G. H. Richardson	1	5	1 7
Wheatley, G. C. Johnson	10	24	1 35**
West Helena, J. J. Decker	19	63	82**
Widener, Robert T. McMaster	5	38	1 44**
Wynne, Lloyd Conyers	8	98	3 109**
TOTALS	212	1040	29 1281**

FORT SMITH DISTRICT—Quota 1760

Alix Ct., Dewey Dark	6	16	22
Alma-Mt. View, T. C. Chambliss	4	35	39
Booneville, W. J. Spicer	13	106	3 122**
Branch Ct., Fred Thompson	8	21	1 30**
Charleston, O. D. Peters	17	33	55**
Clarksville, Norman C. Guice	21	85	3 109**
Forrester, R. M. Holland	4	2	6
Fort Smith 1st Ch., Fred G. Roebuck	84	168	4 256
Fort Smith Goddard Mem., R. E. L. Bearden	28	92	1 121
Fort Smith Grand Ave., C. B. Wyatt	25	11	36**
Fort Smith Massard-Barling, Van Hooker	14	28	42**
Fort Smith Midland Heights, W. A. Downum	4	53	57
Fort Smith St. Paul, Martin Bierbaum	12	35	1 48
Fort Smith St. Luke, D. G. Hindman	8	25	33**
Fort Smith Townson Ave., J. P. Glover	8	1	1 10*2
Greenwood, J. J. Clark	10	44	2 56**
Hackett, Chas. Pachl	6	6	6
Hartman, Paul Kelley	13	51	1 65**
Huntington, M. L. Edgington	2	10	12*
Kibler Ct., Uriah Smith	13	27	40**
Lamar, Carl Adams	12	19	2 33**
Lavaca, W. B. Johnson	1	11	12
Magazine Ct., J. R. Welch	7	21	28
Mansfield, James Meadors	3	30	2 35**
Mulberry, W. L. Byers	8	20	1 29**
Ozark, O. M. Campbell	6	33	3 42
Paris, B. C. Few	12	90	102**
Prairie View-Scranton, C. R. Nance	5	32	2 39**
Van Buren, J. H. Hoggard	4	52	2 58**
City Heights and Bethel, Felix Holland	17	14	1 32**
St. Johns, R. P. Sessions	5	29	1 35**
Waldron, Elmo Thomason	10	50	60**
Waldron Ct., J. W. Sandage	5	9	3 17
TOTALS	339	1264	34 1687

JONESBORO DISTRICT—Quota 1463

Black Oak-Delfore, Hascle O. West	10	23	33**
Blytheville 1st Ch., Roy I. Bagley	54	112	5 171
Blytheville, Lake Street, George L. McGhehey	7	25	32*2
Blytheville West Side Parish, B. W. Stallcup	8	23	31**
Bono, J. C. Crenshaw	2	17	19
Brookland, Lyman L. Bounds	5	27	32
Caraway, J. W. Moore	4	23	1 28**
Dyes-Whitten, M. J. Pollard	7	18	1 26**
Harrisburg, J. T. Byrd	10	68	78**
Joiner, E. E. Stevenson	6	44	50*2
Jonesboro—First Ch., John McCormack	13	73	13 99
Jonesboro Fisher St., Wm. M. Womack	5	27	32**
Jonesboro Huntington Ave., Elmus Brown	14	53	67**
Keiser, J. M. Harrison	5	13	18**
Lake City, Gail G. Anderson	11	20	41**
Leachville, Carl C. Burton	5	27	6 33
Lepanto, Lyman T. Barger	7	33	1 41**
Lundsford-Pleasant Valley, Norris Greer	1	27	28*2
Luxora, H. L. Robinson	5	31	1 37**
Manila, N. Lee Cate	13	28	3 44**
Marked Tree, Paul M. Bumpers	22	71	93**
Monette, G. A. McKelvey	3	29	3 35**
Nettleton-Bay, Clyde Crozier	4	53	1 58**
Osceola, G. C. Taylor	13	85	1 99**
St. John Ct., M. A. Thompson	8	14	22
Truman, Byron McSpadden	7	29	1 37**

New Ren. Due Total
Not

Turrell-Gilmore, Lester Weaver	2	27	1 30**
Weiner, Porter Weaver	3	24	2 44**
Yarbrough-Promised Land, Frank Stage	7	42	1 50**

TOTALS 263 1166 41 1413

PARAGOULD DISTRICT—Quota 924

Beech Grove, W. C. Smith	9	23	37**
Biggers-Knobel, Wm. Paul Lanier	20	12	1 33**
Black Rock-Clover Bend, A. L. Peterson	6	33	42*
Boydsville Ct., Corning, A. W. Harris	4	13	1 18
Dean, Earl Birmingham	5	54	1 60**
French Grove-Harvey Chapel, Elbert Marlar	1	5	6**
Hardy-Willford, W. B. Yount	10	16	26**
Hoxie, W. T. Lingo	6	30	36**
Imboden-Smithville, W. T. Watson	8	26	1 35
Leonard Ct., Robert Sykes	6	25	34
Mammoth Spring, M. B. Short	2	10	12**
Marmaduke, Miss Fern Cook	5	34	39*2
Maynard-Ravenden Springs, Alvin Gibbs	14	18	32**
Paragould—First Ch., R. E. Connell	32	145	4 181**
Paragould Griffin Mem., J. H. Holt	17	37	4 58**
Paragould Ct., Robert Montgomery	19	20	39
Piggott, W. O. Scroggin, Jr.	13	99	112 3
Pocahontas, John Bayliss	1	52	53**
Rector First Ch., J. M. Barnett	9	61	70**
Rector Fourth St., H. M. Sanford	4	21	25
Sedgwick-Egypt, John H. Barrett	7	15	22
Stanford-Morning Star, Lloyd Turner	5	24	1 30
Walnut Ridge, O. J. Evanson	32	59	3 94**
TOTALS	238	852	16 1106**

SEARCY DISTRICT—Quota 1086

Augusta, H. Lynn Wade	7	43	9 58**
Bald Knob-Pharis J. Holifield	23	43	66**
Beebe, Floyd G. Villines Jr.	15	64	2 81**
Cabot, C. W. Good	9	43	3 60**
Clinton, Verlie Harris	9	32	1 42**
DeView Ct., Griffithville, Ray Edwards	3	10	13
Harrison, Earle Cravens	6	18	24**
Heber Springs, W. Vance Womack	4	64	1 69**
Jacksonville, Harold Spence	13	37	50**
Kensett, W. W. Peterson	3	27	1 31**
Leslie, W. A. Lindsey	1	16	17**
Marshall, E. C. Hance	1	28	2 31
McCrory, John W. Glover	18	47	2 67**
McRae, Roy Moyers	8	29	37
McRae Extension, D. H. Wilson	4	5	9
Newton County, C. A. Simpson	3	3	6
New Hope, R. M. Porter	3	2	5*
Pangburn, J. M. Talkington	4	15	19
Rosebud Ct., Harold Brent	5	20	25**
Searcy, Ralph Hillis	8	107	11 126**
Tumbling Shoals, J. H. Smith	2	5	7**
Valley Springs, Kenneth Renfro	4	21	1 26
Van Buren Co. No. 1, Calvin Roetzell	8	14	22**
Van Buren Co. No. 2, James Gatlin	6	3	1 10
Van Buren Co. No. 3, Travis Williams	7	10	17**
Ward-Wilborn, J. G. Gering	14	12	26**
TOTALS	234	783	34 1051

ARKADELPHIA DISTRICT—Quota 1234

Amity Ct., Forney Harvey	6	11	6 23
Arkadelphia, First, J. B. Hefley	9	92	6 107**
Arkadelphia Ct., W. H. Watson	9	18	27**
Bismark Ct., Hollis Simpson	2	12	14**
Dalark Ct., Horace Grogan	17	27	1 45**
Delight Ct., Hershel Richert	5	47	52*2
Fountain Lake, J. A. Wade	10	10	20*2
Friendship Ct., V. C. Holliman	5	12	17
Gardner-Morning Star, C. H. Gilliam	1	8	9**
Glenwood, C. V. Mashburn	12	13	25**
Gurdon, R. O. Beck	16	57	3 76**
Hot Springs, 1st Ch., E. C. Rule	10	78	88
Hot Springs, Grand Ave., C. Ray Hozendorf	26	89	8 123**
Hot Springs-Oaklawn, Noel Cross	20	33	7 60
Hot Springs, Pullman Heights, H. R. Holland	22	40	1 63**
Hot Springs Ct., Albert Burrough	11	11	11
Malvern 1st Ch., Van W. Harrell	22	100	122
Malvern, Keith Memorial, W. S. Cazorl	7	25	32*2
Mt. Ida, Osbourne White	7	34	41**
Murfreesboro, A. W. Hamilton	8	47	55**
Murfreesboro Ct., A. N. Youngblood	7	13	20**
Okolona Ct., E. T. McAfee	10	46	56*
Rockport Ct., J. R. Diffe	11	30	2 43**
Shorewood Hills, J. D. Baker	2	8	1 11**
Sparkman-Sardis, Orrie L.			

(Continued on page 9)

AREA METHODIST CIRCULATION CAMPAIGN

(Continued from page 8)

	New	Ren.	Not Due	Total
Thompson	3	40	1	44**
Traskwood Ct., A. E. Jacob	12	23		35
TOTALS	259	924	36	1219

CAMDEN DISTRICT—Quota 1888

Bearden, J. R. Scott	11	20	1	32**
Bradley, O. W. Hoover	3	24		27**
Camden 1st Ch., Robert B. Moore	38	98	12	148
Camden, Fairview, Alfred DeBlack	15	53	2	70**
Chidester Ct., Rayford L. Diffie	5	23	2	30
Columbia Ct., G. B. Piskey	8	40		48
Dumas Memorial, Ralph S. Mann	20	26	5	51*2
El Dorado, Chattanooga, Ernest E. Hays	13	12		25*2
El Dorado, VanHorn, J. D. Montgomery	23	64	1	88**
Emerson Ct., C. B. Harris	2	13		15
Garland, T. M. Armstrong	8	2		10**
Harmory Grove, H. R. Nabors	22	56		78*2
Holly Springs Ct., Irl S. Lancaster	2	29	1	32
Jamez City, C. E. Fair	35	34	1	70**
Lewisville, James A. Simpson	12	68		80**
Louann Ct., Geo. C. Bailey	3	31		34**
Magnolia, Jackson St., W. R. Boyd	31	72	1	104*2
Marysville-Fredonia, K. K. Carithers	1	43		44**
Naphlet, S. B. Mann	6	36		42*2
Parsonage Ct., Bruce H. Bean	5	33		38**
Shackelford, A. C. Carraway	18	53		71**
Stamp, M. E. Scott	7	71		78**
Stephens, Alfred I. Doss	11	19	1	25
Taylor Ct., C. E. Lawrence	5	19	1	25
Village Ct., D. L. McCauley	10	60	5	75**
Waldo, W. Braska Savage	8	75	1	84*2
Wimot-McNeal, Maurice Burroughs	6	6		12
TOTALS	328	1121	33	1482

HOPE DISTRICT—Quota 1396

Ashdown, W. D. Golden	21	87	2	110*2
Bingen Ct., Douglas Dexter	1	8		9
Blevins, Joe W. Hunter	4	50		54**
Center Point, L. O. Lee	8	3		11
DeQueen, John L. Tucker	8	59	2	69
Dodderidge Ct., W. M. Crow	7	23	4	34**
Dierks, G. L. Glasgow	5	21	9	35**
Emmett Ct., John W. Rushing	34	45		79**
Foreman, Howard Williams	6	23		29
Hope, Virgil D. Keeley	128	139	1	268*2
Horatio Ct., T. Miller	9	33		42**
Lockesburg, E. R. Callicot	5	34	1	40
Mineral Springs, R. A. Anderson	11	17	6	34
Nashville, Geo. G. Meyer	14	50	5	69
Prescott, W. R. Burks	4	60		64
Richmond Ct., J. Wayne Mann	3	21	4	28
Springhill Ct., Claude Clark	13	20	1	34**
Texarkana, College Hill, D. J. McCammon	15	36	2	53**
Texarkana, Fairview, C. H. Farmer	13	73	1	87**
Texarkana, 1st Church, Fred R. Harrison	46	172	2	220**
Texarkana Ct., Virgil Bell	9	14	2	25
Washington Ct., H. W. Worthy	5	14		19
Mcna Ct., W. C. Lewis		5		5
TOTALS	361	1007	42	1410**

LITTLE ROCK DISTRICT—Quota 2434

Austin Ct., J. R. Martin	12	15	1	28
Bauxite, O. C. Birdwell	15	31	2	48**
Bethlehem Ct., C. C. VanZant	23	11	1	35**
Carlisle, Curtis Williams	8	24	4	36
Dcs Arc, A. C. Rogers	5	29	1	35**
D-Valls Bluff, Albert Oliver	4	7		11
Douglasville, J. R. Sewell	22	20		42**
Geyer Springs, S. T. Baugh	5	25	1	31**
Hazen, Harold Sadler	8	53	3	64**
Hickory Plains, Fred H. Arnold	15	13		28
Little Rock Churches:				
Asbury, Arthur Terry	49	134	2	185
Capitol View, D. T. Rowe	10	38		48
1st Ch., Aubrey G. Walton	38	158	10	206
St. Paul, C. W. Richards	39	37	2	78*2
Henderson, Kirwin Hale	17	51		68**
Highland	9	37		46
Hunter, Fred L. Arnold	13	59		72
Oak Forest, D. Mouzon Mann	28	48	1	77**
Pulaski Heights, J. Kenneth Shamblin	22	67		89
Scott St., R. F. Sorrells	13	47		60
Twenty-Eighth St., Clyde Parsons	6	21		27
Winfield, Cecil R. Culver	38	118	7	163
Lonoke, Geo. E. Reutz	10	28	2	40
Mabelvale, Richard Perry	7	23	1	31
Primrose, H. D. Ginther	12	19	2	33
Salem-Mt. Carmel, Kenneth Goode	23	2		25**
TOTALS	455	1119	40	1614

MONTICELLO DISTRICT—Quota 1113

rossett, Dan R. Robinson	16	79		95**
ermott, Clint M. Atchley	6	45	1	52
rew Ct., A. C. White	4	35		39**
umas, R. A. Teeter	5	61		66**
udora, C. Everette Patton	1	29	3	33**
ordyce, L. W. Averitt	37	58		95**

New Ren. Due Total

Fountain Hill, W. E. West	11	4		15
Hamburg, M. W. Miller	4	60	9	73**
Hampton-Harrell, G. W. Warren	10	32		42**
Hermitage Ct., S. W. Mooty	2	27		29**
Huttig, P. D. Alston	3	33		36**
Lake Village, Fred W. Schwendemann	22	30		52**
McGhee, J. Ralph Clayton	17	51	4	72**
Monticello, Roland E. Darrow	5	57	4	66
New Edinburg Ct., C. R. Andrews	7	26		33
Parksdale, J. C. VanHorn	1	29		30**
Portland, Clem Baker	4	43	1	48*2
Star City, George Kerr	12	41		53**
Strong Ct., Joe H. Robinson	7	12		19**
Thornton Ct., W. W. Barron	5	23		28**
Tillar-Winchester, O. L. Daniel	5	42		47**
Warren-Martin Chapel, J. E. Cooper	15	87	4	106**
Watson-Kelso, W. T. Bone	3	43	2	53**
Wimot-Miller Chapel, C. D. Cade	11	21		32**
TOTALS	214	977	28	1219**

PINE BLUFF DISTRICT—Quota 1332

Almyra	4	11		15**
Altmeier-Wabbaseka,	7	38		45**
Harold Scott	7	23		30**
Bayou Meto, Palmer Garner	7	30	1	38**
Carthage-Tulip, L. R. Sparks	7	30	1	38**
Center Grove, G. W. Robertson	11	64	4	79
DeWitt, O. E. Holmes	6	55	4	65**
England, John L. Hoover	3	18	1	22
Gillett, Everett Vinson	5	25	1	31*2
Good Faith, B. F. Fitzhugh	12	16	3	30**
Kco, R. L. Riggan	9	16	3	28
Leola, J. W. Camell	9	22		31**
Little Prairie Ct., Connie Robins	9	24		33
Pine Bluff Churches:				
Hawley Mem., Claude O. Hall	6	44	13	63
Lakeside, Otto Teague	13	37	1	51
Rison, Barry L. Bailey	2	13	7	22
Roe Ct., James Constable	10	45	4	59**
Rowell Ct., W. C. Onstead	8	24	3	35**
Sheridan, Bryan Stephens	18	84		102**
Sherrill-Tucker, H. A. F. Ault	25	100		125**
Stuttgart, First Ch., Mark F. Vaught	21	11		32**
Stuttgart, Grand Ave., A. J. Christie	192	715	38	945
Sulphur Springs, R. H. Cannon	21	11		32**
Swan Lake, R. M. Crain	192	715	38	945
TOTALS	192	715	38	945

ARKANSAS METHODIST DISTRICT SUMMARY REPORT NO. 2

District	Quota	New	Ren.	Not Due	Total	% of Quota
Fort Smith	1760	389	1264	34	1687	96%
Little Rock	2434	455	1119	40	1614	66%
Camden	1888	328	1121	33	1482	78%
Jonesboro	1463	266	1106	41	1413	97%
Hope	1396	361	1007	42	1410	101%
Conway	1319	299	1036	35	1370	104%
Forrest City	1222	212	1040	29	1291	105%
Monticello	1113	214	977	28	1219	110%
Arkadelphia	1294	259	924	36	1219	94%
Paragould	924	238	852	16	1106	120%
Searcy	1062	234	783	34	1051	99%
Pine Bluff	1332	192	715	38	945	71%
Batesville	935	157	717	26	940	100%
Fayetteville	1167	149	649	53	831	71%
TOTALS	3753	13310	465	17528		

THE LOUISIANA METHODIST

ALEXANDRIA DISTRICT—Quota 902

	New	Ren.	Not Due	Total
Alexandria, 1st Ch., V. D. Morris	17	91	1	109
Trinity, Wm. F. Mayo	51			51**
Wesley, James E. Christie	17	7		24*2
Ball, H. D. Fisher	17			17**
Boyce, J. A. Woodyard	9	2	1	12**
Bunkie, W. L. Doss Jr.	8	23		31
Colfax, R. E. Walton	4	12		16
Effie	7			7
Elizabeth, G. A. La Frange	8	29		37**
Glennora, R. E. Carter	5	21		27**
Jena, Otis W. Spinks	39			39
Lecompte, J. A. Jones	28	8	1	37**
Marksville, J. B. Shearer	35	20		55*2
Melville, M. S. Robertson	39	3		42**
Krotz Springs, J. C. Zerrangue	5	1		6**
Many, Kenneth G. McDowell	18	24	2	44**
Montgomery, James W. Ailor	23	2		25**
Mt. Zion, C. J. T. Cotton	17	11		28**
Natchitoches, B. A. Galloway	40	57		97**
Oakdale, Edwin J. Barksdale	8	12		20
Oak Grove, J. W. Lee	24			24**
Olla, W. H. Carrol	19			19**
Palestine, J. B. McCann	22	44		66*2
Pollock, R. M. Crofoot	13	6		19*
Trout, E. A. Keasler	12	2		14
Shamrock, W. E. Anding	7			7**
Weaver, John Kellogg	52	6		58*2
Winnfield, P. M. Caraway	70	10		80**
TOTALS	615	396	5	1016**

BATON ROUGE DISTRICT—Quota 1828

Amite, Donald M. Risinger	19	1		20
Angie, A. D. George	18	11		29**
Baker, Marvin H. Corley	22	7		29
Baton Rouge Churches:				
1st Ch., Homer Vanderpool	265			265
Istrouma, James T. Harris	51	5		56
W. B. Reilly Mem. Univ., W. E. Trice	48	10		58
Clinton, George W. Harkins	12	2	1	15*

New Ren. Due Total

Bluff Creek, Carl D. Wood	6			6
Dorford, Webb D. Pomeroy	11	4		15
Fisher, W. B. Hollingsworth	15			15
Frankinton, J. H. Sewell	50	9		59**
Gonzales Ct., A. H. Carry	21	6		27**
Greenburg, H. R. Hine	10	6		16**
Jackson, W. R. Irvin	23	2		25**
Kenwood, A. G. Taylor	22	1		23**
Livingston, T. J. Smith	1			1
Lave Oak, Clifford E. Davis Jr.	7	4		11
Magnolia-Gonzales, L. W. Taylor	2	1		3
Pine Grove	9	3		12
Paquimine, C. R. McCammon	17	29		46*2
Ponchatoula, A. M. Freeman	21	32		53**
St. Francisville, E. Lee McKay	4	3		7
St. Helena, J. N. Lambert	2	15		17
Slaughter, Dale Kenneth Smith	1	11		12
Tangapahoa, W. R. Davis	1			1
Tickpaw, J. M. Wilkes	3			3
Walker, George M. Horne	9			9
Zachary, James F. Stone	45	15		60**
TOTALS	739	175	1	935

LAKE CHARLES DISTRICT—Quota 1454

Bell City, C. J. Thibodaux	1	21		22**
Church Point, James A. Knight	6	2		8
Crowley, 1st Ch., A. M. Brown	5	15		20**
Crowley, Wesley, Robert R. Miller	3	1		4
D-Quincy, E. W. Day	61			61**
DeRidder, George Pearce Jr.	8	13		21
Eunice, Ned L. Stout	9	2		11
Gueydan, D. B. Boddie	12	18		30**
Iowa, W. F. Howell	12	3		15
Jennings, Robert B. Crichtlow	25	1		26
Kinder, Abe M. Conerly	8	1		9
Lafayette First Ch., D. W. Poole	30	17		47
Lake Arthur, Robert M. Brown	30			36**
Lake Charles Churches:				
1st Ch., Carl F. Lueg	64	9		73
Simpson, Ted Howes	2	15	1	17
Oak Park, Ted R. Weber	1	3		4
University, Wm. O. Byrd	60	1		61
Leesville, John F. Kilpatrick	15			15
Maplewood, Louis Hunter	4	2		6
New Iberia, Louis Hopman	30	2		32
Gberlin, V. L. Westbrook	6	2		8**
Rayne, Edgar C. Dufresne	10			10
Vinton, John W. Wayne	31			31*
TOTALS	441	123	1	570

MONROE DISTRICT—Quota 1609

Bastrop, Jack H. Midyett	142	9	11	162**
Bonita, W. F. Ragsdale	50	6	5	61**
Brownville, Tillman A. Brown	19			19**
Claiborne, F. L. Hearne	8	5	3	1

NORTH ARKANSAS CONFERENCE NOTES

By Ira A. Brumley

Russellville Training School

There is to be a three-unit training school held at Russellville, February 11-13, with the following courses being offered: Personal Religious Living, Dr. Fred R. Harrison.

Teaching Children, Mrs. W. A. Wooten.

Teaching Youth, Rev. James S. Upton.

This school has been arranged for the churches within reach of Russellville.

North Little Rock Training School

A five-day Second-Series training school has been organized for the churches of the North Little Rock Area, with the following courses to be offered, the school being held at First Church, North Little Rock February 24-28:

Understanding Children, Mrs. M. G. Joyce.

Preparing for Marriage, (youth only), Rev. Harold Spence.

Christian Home-Making, Rev. E. J. Holifield.

Christian Stewardship, Rev. Irl Bridenthal.

Audio-Visual Aids, Rev. Alfred A. Knox.

How We Got Our Denominations, Rev. William Wilder.

Rev. I. L. Claud has been selected as Dean of the school.

Conway Training School

A four-unit training school has been arranged for the churches within reach of Conway, the school being held March 16-20, Conway First Methodist Church. The following courses are to be offered:

The Children's Division, Mrs. Uel D. Crosby.

Counseling Seniors and Older Youth, Rev. Paul Bumpers.

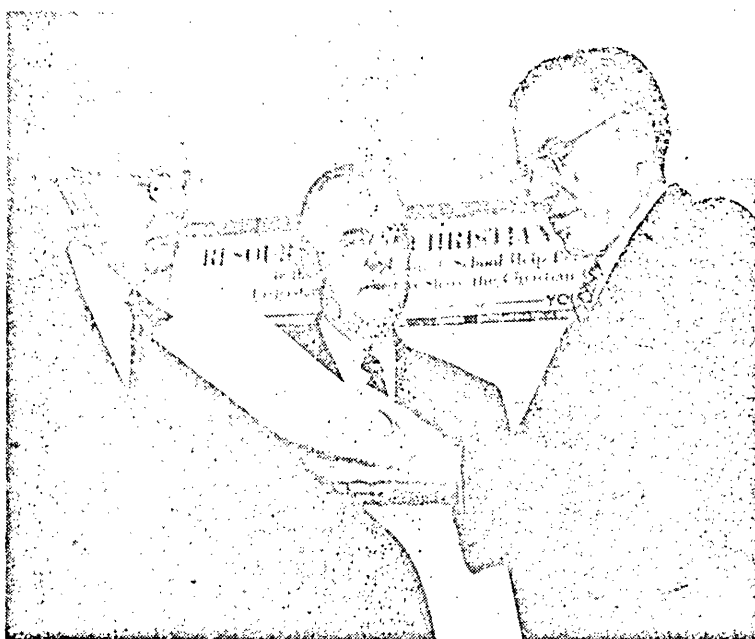
The Church Working With Young Adults, Rev. Robert Clemmons.

The Book of Acts, Instructor to be announced.

The school will begin on Sunday afternoon at 2:30 p. m., closing on Thursday night.

Institutes On Christian Education

When these materials are read next week the program of Evangelism will be moving toward a climax. The big task will still be ahead that of developing persons reached by this program. The North Arkansas Conference is planning for a series of Christian education institutes, which we hope, when completed, will have been within reach of every church school of the North Arkansas Conference, even though



Dr. J. Phillip Hyatt, of Vanderbilt School of Religion, examines the proofs of the new Revised Standard Version of the Old Testament, scheduled for release next October. Dr. Hyatt attended one session of the Methodist Curriculum Committee in Nashville on January 3, at which

Bishop Paul E. Martin (center) of Little Rock, presided. Dr. C. A. Bowen, editor of church school publications, requested the Curriculum Committee to approve use of the new version in the church school literature, beginning with October, 1952.

the present list of institutes does not provide for some of the churches. The purpose of these institutes is to discuss the objectives, types of experiences, and materials needed to help persons grow as Christians.

We are to have Rev. Walter Vernon of the Editorial Division of the General Board of Education for three of these institutes: Forrest City, Jonesboro, and Searcy.

The following institutes have already been listed:

North Little Rock, January 28; Conway, January 29; Morrilton, January 30; Russellville Area, January 31; Forrest City, February 11; Jonesboro, February 12; Searcy February 13; Fort Smith, February 14; Ozark, February 15; Harrison, February 17; Berryville, February 18; Springdale, February 19.

We are suggesting that, with the exception of the Harrison institute, these institutes begin at 7:00 p. m. and close at 9:00 p. m.

We expect to have available for each general superintendent a copy of the Literature Chart showing objectives, experiences, and types of literature. These are to be distributed only to superintendents in attendance, as they should be explained before being passed out.

We are inviting each church to be represented by the following persons: pastor, general superintendent, and three divisional superintendents:

children, youth, and adults. Should a church school not have the three divisional superintendents, such a school should plan to be represented by a worker with children, a worker with youth, and a worker with adults, along with the pastor and general superintendent.

We hope to arrange at a later date institutes for churches or groups of churches not included in this series of institutes.

The month of March has been designated as a time for increasing the church school membership and attendance. It is important that we prepare our leadership to do a better job with those already enlisted, as well as to provide adequately for those new ones to be enlisted.

Coaching Conference

We are having a Coaching Conference at Conway, Hendrix College Campus, February 21-22, for persons interested in becoming certified on the First and Second Series Courses on Teaching:

How to Teach in the Church School (First Series)

Ways of Teaching (Second Series).

Rev. M. Earl Cunningham, Director of Training Work of The Methodist Church, is to be with us and direct the Coaching Conference.

Thirty people have been invited for the Coaching Conference

TRAINING SCHOOL ON THE WIDENER-ROUND POND CHARGE

The Widener, Round Pond, Madison, and Tuni Methodist Churches recently participated in a very successful two-unit training school. Forty-three were enrolled and twenty-five received credit for satisfactory completion of the course requirements.

The courses taught were: Christian Beliefs, with the Rev. Alf Eason of Marion as instructor; and How to Teach in the Church School, with the Rev. Alfred Knox of West Memphis as instructor. District Superintendent Ethan Dodgen of Forrest City served as dean. According to all reports, the instructors were extremely capable and very well prepared. The truth of this is attested by the very fine attendance which continued through each session of the school.

The schedule of the school deviated somewhat from the usual by having one session each week for five weeks. The students seemed to enjoy this arrangement and also seemed to get more out of the courses through having more time to study and digest the material.

Another unusual feature of the school was a turkey dinner given on the closing night for all who had earned credit. This treat was the generous gesture of Mr. R. C. McNeil, of Round Pond, in honor of the faculty and students. In view of the reaction, it is highly recommended as a fitting, and filling, way of closing a training school.

The Widener-Round Pond Charge feels greatly indebted to the instructors, the dean, and to the Conference Board of Education, for a highly helpful training experience.

and are being provided with guidance materials.

These two courses are perhaps needed as badly as any courses in our training series. We hope to have a large number of certified instructors ready within a few months to give leadership in this field.

The Coaching Conference will begin at 10:00 a. m., January 21, and close at 3:00 p. m., January 22.

PEWS, PULPIT & CHANCEL
Furniture
• EARLY DELIVERY •
WRITE FOR CATALOGUE
J. P. REDINGTON & CO.
DEPT. 108, SCRANTON 2, PA.

WOMAN'S SOCIETY OF CHRISTIAN SERVICE

MRS. EWING T. WAYLAND, Editor

MONTICELLO DISTRICT BOARD MEETS

The Monticello District W. S. C. S. Executive Board met Thursday, December 6th, at 11:00 a. m. in the district parsonage at Monticello for an all day meeting and covered dish luncheon with Mrs. W. E. Brown and Mrs. J. R. Echols as hostesses.

The meeting opened with a devotional on "Love" given by Mrs. Argie Henry, Spiritual Life Secretary.

Mrs. Leslie Jeffress, District President, presided over the business session of the day.

Mrs. A. B. Cone, District Treasurer, reported 33 societies reporting in district with a membership of 794.

Amount in cultivation fund, \$246.96.

A motion was made by Mrs. J. R. Echols that rugs be bought for district parsonage living room and dining room, money for same to be paid in by societies of district. Second by Mrs. J. H. Everett, motion carried, Mrs. Jeffress to ask all societies to contribute as soon as possible so rugs may be purchased.

The following committee was named to do the buying: Mrs. Carl Mells, Mrs. George White, Mrs. J. R. Echols and DuVal Purkins.

Mrs. Zeb Haynes, Treasurer of district parsonage fund, reported \$34.22 in fund at this time.

The amount which has been spent on furnishings for new parsonage, \$734.84.

Following the luncheon Mrs. Jeffress presented Mrs. T. S. Lovett, Conference President, who was a guest for the meeting. She presented the plans for setup of W. S. C. S. district meetings which would correspond in part to former zone meetings.

Mrs. T. G. Poss made a motion with a second by Mrs. C. D. Cade that the plan be worked out in Monticello District and that the first meeting be called soon after January 1st. Motion carried. Motion made by Mrs. Henry for the adoption of Standing Rules of Order, and the recording secretary was instructed by Mrs. Jeffress to send copies of Minutes and Standing Rules of Order to each district officer.

Mrs. J. H. Everett moved, with a second by Mrs. Booth Hope, that \$10.00 be placed in the "Remembrance Fund" as a Memorial to the late Mrs. Rowan Prewitt of Tillar who was District Secretary of Christian Social Relations. Motion carried.

There being no further business the meeting closed with prayer by Mrs. Henry.

Officers present for the meeting were: Mrs. Leslie Jeffress,

WORLD PEACE TO BE MAJOR EMPHASIS



MORE than 1000 new missionaries and workers in home and foreign fields will be sought by the Woman's Division of Christian Service of the Methodist Church in the coming four years, leaders of the organization at Buck Hill Falls, Pa., reported at the 12th annual meeting of the Division. Mrs. F. G. Brooks, Mt. Vernon, Iowa, is president of the organization of more than a million and a half women.

World peace will be a major emphasis for the nearly three thousand local societies of the Woman's Division of Christian Service in the coming four years. Nation-wide workshops on peace are planned by the Department of Christian Social Relations and Local Church Activities to "arouse groups of Christian leaders to a recognition of their responsibility for generating a climate of peace and working with other Christians to strengthen the United Nations."

"Recapturing the moral leadership once held by the Church" was named an important goal by the Christian Social Relations Department which urged women to fight against political corruption, gambling, alcoholism and narcotics, "the scaling down of civil liberties" and "other crucial problems of social welfare."

If peace is to come to the people of the earth, it will come because men of goodwill have faith to overcome defeatism and the spirit that considers war inevitable," the women were told in the report presented by the Christian Social Relations Department.

NEWS IN BRIEF

The Woman's Society of Christian Service, Logansport, recently completed a course of study on the Family and the Home. The last program was put on at the evening worship hour, in the nature of a playlet. Each phase of the church program and the meaning of the vows and sacraments and services to the family and members of the church was presented. When it came to the item of the meaning of infant baptism, a father and mother presented their infant for baptism. It was very realistic and impressive.

Mrs. William Hightower, wife of the pastor of Pottsville, was honored by being given a Life Membership by the Woman's Society. Ricky and Steine, the two boys, have been given Honorary Baby Memberships.

Minden Woman's Society honored thirty-three new members at a luncheon on January 7, at Fellowship Hall. The President,

Mrs. L. T. Sandborn, Mrs. J. R. Echols, Mrs. DuVal Purkins, Mrs. A. B. Cone, Mrs. George Renfro, Mrs. Argie Henry, Mrs. C. B. Nelson, Mrs. Ralph Clayton, Mrs. J. H. Everett, Mrs. Booth Hope, Mrs. J. A. Janes, Mrs. T. G. Poss, Mrs. C. D. Cade.

Guests other than Mrs. Lovett were: Mrs. Zeb Haynes, Mrs. Roland Darrow and Mrs. M. D. Hughes.—Reporter.

Mrs. Davidson Brown, welcomed the new members. A short business meeting was held.

A skit entitled "The Advance of Ann Skeptical" was presented with the following cast: Mrs. Brown, Mrs. H. G. Williams, Mrs. J. N. Davis, Mrs. C. B. McDonald, Mrs. J. L. Almond, and Mrs. Don Hinton.

Lewisville Society held its annual Christmas party on December 13, at which time clothes

were brought for Overseas Relief, and gifts for their project.

On January 7, the Epiphany program was given by Mrs. W. L. Woods, with anglabra used at the worship center.

Mt. Zion Church, Louisiana, held its special Christmas service at the parsonage December 13. Rev. C. J. T. Cotton gave the message of the meaning of Christmas to twenty-two members and ten visitors.

Lewisville Society took as its November project the redecorating of the parsonage kitchen; they were assisted by the Bessie McKnight Circle.

A third Wesleyan Service Guild for Goddard Memorial Methodist Church, Fort Smith, was organized January 7, with a nucleus of members from the original Guild. With nine members at present, the new group will be called the Ella Galloway Guild, named for Mrs. J. J. Galloway, who was the wife of Rev. J. J. Galloway, retired Methodist minister, and mother of Rev. Paul Galloway.

Officers elected were as follows: Mrs. Ed Haynes, president; Mrs. J. Kemp Johnson, vice-president; Mrs. George Shamlin, treasurer; Mrs. W. G. Walker, recording secretary; and Mrs. Francis Winter, promotion secretary. Mrs. Bud Spangler is coordinator.

Mrs. Galloway Speaker At Texarkana

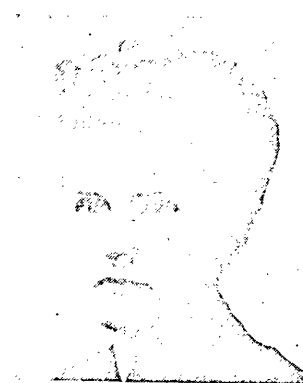
MRS. E. D. GALLOWAY of Hope, past president of the Woman's Society of Christian Service of the Little Rock Conference and wife of the district superintendent of the Hope District, Arkansas Methodist Church, spoke Monday evening, January 7, at the First Methodist Church, Sixth and Laurel, on "Conditions in Europe."

She addressed about 200 persons as she related her impressions of a recent trip to England and Europe. She and her husband were members of a good will troupe sponsored by the Methodist Travel Service, and attended the Methodist Ecumenical Conference held in Oxford, England, August 28 to September 8.

Mrs. Galloway discussed three principal questions in her talk, British socialism, the British economic crisis, and European opinion of the U. S.

Mrs. O. B. Poland, program

chairman of the W. S. C. S., introduced Mrs. Galloway. Mrs. W. A. Bengé, president of the local W. S. G., also made a talk about



MRS. E. D. GALLOWAY

the speaker. The Rev. Fred Harrison gave the invocation. The Rev. E. D. Galloway closed the meeting with prayer.—Mrs. J. T. Jarvis.

CURRENT NEWS IN ARKANSAS METHODISM

BENTON COUNTY MINISTERIAL ALLIANCE

The Benton County Ministerial Alliance in their meeting at Pea Ridge January 14 went on record as strongly opposed to the appointment of an Ambassador or an Envoy to the Vatican State in Rome.

Rev. Hubert Pearce led a round-table discussion on this issue. Fifteen Protestant ministers took part in the discussion and all voted their opposition to any appointment at any time.

The ministers were the luncheon guests of the Pea Ridge Ministerial Alliance with Rev. George Klebb as the host minister.

The next meeting of the Alliance will be April 28 in the Rev. Raymond Woodworth, President, Rev. H. W. Jinske, Secretary.

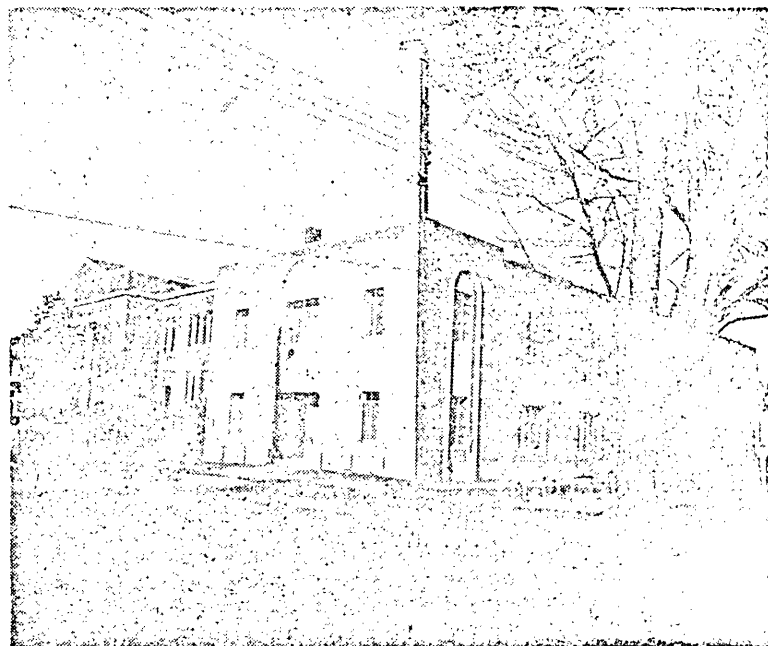
MINISTERS MEET AT PRAIRIE VIEW

The Arkansas Valley Breakfast Conference for Methodist ministers was held recently at Prairie View, with the pastor, Rev. C. R. Nance host to the group.

Women of the Prairie View church prepared a generous and delicious breakfast to the following pastors: Rev. Carl Adams, Lamar; Rev. C. N. Guice, Clarks-ville; Rev. O. M. Campbell, Ozark; Rev. Ben C. Few, Paris; Rev. Fred M. Thompson, Branch; Rev. O. D. Peters, Charleston; the host pastor, Rev. C. R. Nance and the district superintendent, Dr. W. Henry Goodloe, Fort Smith.

The aggregate net paid circulation of English language in the U. S. exceeds 52,000,000 daily.

New Educational Building At Forrest City



By Dot Shaw

GARDNER HAS SUCCESSFUL CAMPAIGN

THE financial campaign at Gardner Memorial Methodist Church, North Little Rock, in progress for the past six weeks to raise \$100,000 closed Monday night when it was announced that \$100,976.13 had been subscribed. The money will be used in construction of an educational building.

The campaign was sponsored by the Wells Organization of Dallas, Tex., with J. Eugene Cecil as the company's representative. Dr. William F. Fulton and W. E. George were general chairmen for the drive. More than 150 men and women made the solicitations.

Proposed Educational Building shown with present Church Building.

At the kick-off dinner, held at the First Methodist Church in Little Rock, 500 members of the church attended. Bishop Paul Martin was the speaker at this meeting.

Gardner Memorial Church Was completely destroyed by fire in 1946 and the sanctuary has been rebuilt. The educational building will complete the two-unit structure.

The church now has a membership of 1200.

The Rev. Irl Bridenthal has been pastor of the church since last June. Fillmon Bledsoe is board chairman.

BISHOP PAUL E. MARTIN was in Forrest City Sunday morning, Jan. 20, to participate in the formal opening and cornerstone laying ceremonies for the recently-completed \$100,000 education unit at the First Methodist Church here.

The ceremonies conducted by Bishop Martin began at 9:30, prior to Church School activities. Rev. Ethan Dodgen, district superintendent of the Forrest City district, assisted Bishop Martin.

The addition of the new education unit to the Methodist Church plant here makes the local Methodist church one of the largest in Forrest City. The new building

was occupied for the first time Sunday, Dec. 30.

Rev. Raymond L. Franks is minister of the Forrest City Methodist Church. Under his direction, a \$25,000 building fund campaign has recently been completed. This amount was secured in cash and pledges.

Bishop Martin delivered the dedicatory sermon and led in the Service of Dedication of the new church plant at Cherry Valley at a service beginning at 11:00 o'clock. Rev. J. H. Richardson is the Cherry Valley pastor.

On Sunday afternoon Bishop Martin led in the dedicatory exercises at the Crawfordsville Methodist Church where a new organ was dedicated. Rev. J. W. Glass is the Crawfordsville pastor.


NOTE OF THANKS

We take this method of thanking all of our church members for their loving kindness in administering to our welfare during our recent illness. We want to express our gratefulness to the Doctors Wade for their masterful surgery, to the special nurses who attended us for seven days, the preachers, Brother Carnal and Brother Farr, who filled the appointments at Gardner and Morning Star, to Chaplain Gannon of the Army and Navy Hospital who preached two Sundays for us.

We are hoping to be able to soon be back on the work.

May God's richest blessings be upon all is our prayer.—Cleve H. Gilliam.





"Along A Country Road"

The Town and Country Commission

The Methodist Church

The North Arkansas Conference

Hendrix Station, Conway, Arkansas

Paul E. Martin, Bishop
Rev. Floyd G. Villines, President

Mr. Lester Hutchins, Vice-President
Rev. N. Lee Cate, Secretary

Rev. J. Albert Gatlin, Executive Secretary

STRAWS IN THE WIND

Often we human mortals are so caught up with general directions that we fail to see the intervening incidents that promise to crack the shell of the status quo and at last change a general direction. There has been a general direction away from the rural communities in the past several years. The great god Centralization has become the ruling diety of the nation and moves on toward rulership of the world. In that mad rush toward deifying the whole, irrespective to the identity and relationship of the parts, individualism is crushed and personal worth is lost in the vague blur of the larger whole. The trees cannot be seen for the woods. The going mad toward the direction of over-emphasizing the individual would have the same final result as the overemphasizing the mass . . . Society would at last come to chaos!

There are happening, however, some very significant things which bode well for the future. There is a trend back toward community and neighborhood life. There is a new alertness toward the necessity of keeping alive human values and ideals that relate to individual human beings.

The American Medical Association, seeing the need of better care for community life, has reached into the field of agriculture and selected a foremost leader in this field from Arkansas and commissioned him to go out and preach health among the rural people. Aubrey D. Gates will be a great apostle for the improvement of health conditions for this great section of our citizenship. In the long run better hospitals and health facilities will be available for them. This is a significant straw in the wind. The medical profession has taken a good step in the right direction toward the problem of better medical care for all.

Very suggestive also is the movement on the part of our agricultural people in the matter of emphasizing better community life by helping set up community councils and programs with the people themselves taking the major part. This will help bring communities together and encourage the spirit of enterprise toward building a better life.

Significant also is the great

movement throughout the Methodist Church toward rebuilding the church life in the open country and village communities. The Town and Community Church movement bids fair to revitalize the entire church. Laymen are being inspired to become active in witnessing to their faith in churches that have few services conducted by ministers. A growing interest is being shown in helping young couples find their places on the farm and become a part of community life. This part of our program needs to be emphasized more. Home ownership of small and medium farms is one of the major needs of the day. Through government and other lending agencies those interested may have assistance in buying their farm.

The pattern of the ministry in our church must be changed to include as successful and respected those men who find it a Christian service to serve the rural people of their land. The rural parish may become a self-supporting institution if the people will lift up their heads and accept the privileges and responsibilities of life. A fine, progressive and hopeful spirit can prevail on these great charges. Pastors, leaders, and people all working together can bring great things to pass.

There are straws in the wind. A new direction of travel is coming to us. We rejoice as we journey and hope for a better day.—J. Albert Gatlin.

YOUTH WEEK OBSERVANCE OF NINTH ANNUAL

"United, Committed, in Christ" is the theme for the Ninth Annual Observance of Youth Week to be held January 27-February 3, 1952. In Arkansas, Youth Week will be observed in individual Protestant churches and through special community-wide programs, according to Danny Adams, chairman of the Arkansas State Call Committee.

Youth Week is sponsored by the United Christian Youth Movement, the official youth agency of the National Council of the Churches of Christ in the USA. It represents thirty-eight Protestant denominations with ten million youth in their ranks, eleven national youth-serving

agencies, and hundreds of interdenominational youth councils across the country.

The major feature of Youth Week, 1952, is "The Call to United Christian Youth Action," a nation-wide program to enlist a million Christian youth and their adult leaders in a united program of Christian action in the community, the nation and the world. For Arkansas, the goal has been set at 15,000 youth to answer "The Call." With 22,000 Methodist youth in the state, it means MYFers are going to have to assume the major responsibility of getting their youth groups out to respond to the various activities and to see that their own community rally goes "over the top."

The program of Youth Week will include youth-led worship services in individual churches on Denominational Sunday, January 27 (in Arkansas where the Evangelistic Mission is being held, Methodist youth will be joining together with the Methodists of their districts in the district-wide Victory Rallies which will mark the close of the special Evangelistic campaign), sharing in a national radio program, youth visitation, and a community-wide youth service on Interdenominational Sunday, February 3. Each MYFer should check up NOW to find out exactly when and where his own community rally will be held and should also pledge his support to help make it a success.

In local communities, this will result in projects of youth evangelism, community service, and world Christian citizenship. In the nation it will mean a sustaining nation-wide radio program, and in the world the strengthening of Christian youth work.

Since the first Youth Week-Christian Endeavor Week in 1944, the observance of Youth Week has grown into one of the largest church events in North America.

As MYFers, let us make sure

MEETING OF NETTLETON M. Y. F.

The Nettleton M. Y. F. had a Watch Night party on New Year's Eve with games and refreshments.

Fisher Street, Jonesboro and our M. Y. F. enjoyed a skating party together on December 9.

We had a good year in 1951 and hope to have one just as good in 1952.—Robbie Gilliam, Reporter.

It is a good thing at this Christmas season to read again the immortal words of Ralph Waldo Emerson: "Rings and jewels are not gifts, but apologies for gifts. The only true gift is a portion of Inspiration

that we all do our part in responding to The Call to United Christian Youth Action.—Emogene Dunlap.



American Auditorium Chairs with pew ends

American

AUDITORIUM CHAIRS

FOR DIGNITY AND COMFORT

Increasingly, modern churches are turning to the dignity and comfort, as well as the beauty and durability of American Upholstered Chairs. This type of seating also lends itself to curved rows. Write to us in detail about your needs.

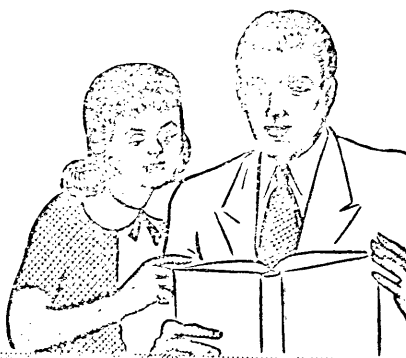
DEPARTMENT 1114

AMERICAN SEATING COMPANY

World's Leader in Public Seating
2930 Canton St., Dallas 1, Texas

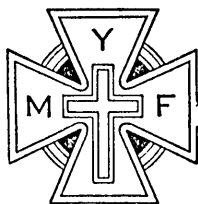
Feb. 10
1952

Educational Opportunities



RACE RELATIONS SUNDAY

BOARD of EDUCATION the METHODIST CHURCH
810 Broadway Nashville 2 Tenn.



ARKANSAS-LOUISIANA

Methodist

Youth

Fellowship

NEWS

NORTH CADDO SUB-DISTRICT MEETS AT MOORINGSPOUT

The North Caddo M. Y. F. Sub-District met at Mooringsport, Louisiana, January 6th, for an afternoon of worship and fellowship. The Sub-District was honored to have Miss Betty Rae Fox, Conference Director of Youth Work, as inspirational speaker. Rev. J. J. Caraway, Director of Youth, brought information of value and help. The meeting concluded with a period of recreation and fellowship led by David Batt, District M. Y. F. Recreation Director. Refreshments were served by Mrs. O. H. Patterson and the local W. S. C. S.

Young people attending represented churches of Ida-Hosston, Oil City, Vivian, and Mooringsport.—Reporter.

SOUTHWESTERN SUB-DISTRICT

The Southwestern Sub-District met at the Bauxite Methodist Church on Monday, January 7, with the president, Jack McDaniel, presiding. There was a total of 144 present with Bauxite having the largest number present and Benton with the second largest number.

Peggy Tull was in charge of the worship program on "World Missions." Taking part on the program were Peggy Tull, Norman Totten, Merilyn Lewis and Corlie Briner.

Recreation and refreshments were directed and served by the Bauxite M. Y. F.

The next meeting will be held at Benton on February 4.—Publicity Chairman.

YOUTH HONORED AT HARRISON

At the morning worship hour on December 30, college students and youth in service were honored at a special worship service at the Harrison Methodist Church. "Above and Beyond" was the theme of a program carried out by students.

Carolyn Sager of the University of Arkansas, led with the Call to Worship, followed by devotional thoughts by Eddie Milburn, Hendrix; Joyce Kent, State Teachers; Bob Kent, State Teachers and Lee Dorsy, University of Arkansas.

Janette Rogers, University of Arkansas, read the Scripture, and Ushers Freddy Newman, on leave from Alaska, and Buddy Rogers, University of Arkansas, received the offering. P. B. Castleberry, State College, sang a solo, accompanied by Annetta Vinson, Oklahoma College for Women.

Frank Backstrom, University of Arkansas, delivered the meditation, "Secret of True Greatness," followed by a talk, "What the Student Expects of the Church and What the Church Expects of the Student," by Ronald Jones, University of Arkansas.

Other students honored were: Richard and Jo Bennett, Shirley Henley, Bill Holt, Judy Jackson, Tommy Milburn, Louis Mogel, John Vincent and Connie Shad-dox, University of Arkansas; Harvey and Joanne Henson and Fred Hudson, State Teachers College; Larry Case, Denver University; Andy Jordan, St. Louis School of Pharmacy and Mary Dawson, Mt. Carmel School of Nursing.

Others in service who were

ELOISE BUTLER SUB-DISTRICT

The Eloise Butler Sub-District Methodist Youth Fellowship met at 7:30 p. m. at Pocahontas Methodist Church on December 17 for the regular monthly meeting.

President Sue Pickens presided. Our sub-district group will cooperate with our district-wide youth rally in Paragould on Saturday night, January 19. We pledged ourselves to have an unusually large group from each church represented.

Our February meeting will be held with the M. Y. F. group at Black Rock.

A skit on "The Call," was presented by the Pocahontas group. Our group had been looking forward to the time when they would know exactly what "The Call" was. Now that we know we are cooperating in every possible way.

The group was delighted with the pretty decorated tables which Mrs. Nickle and Miss Snodgrass, local counselors, had prepared.

The group moved up stairs to the sanctuary to conclude our evening with one of the outstanding programs of our year. Miss Regina Watson, youth director from Newport First Church, was the guest speaker, using for her topic, "Can We Keep the Real Meaning of Christmas." The local group furnished a boys choir which added much to our worship in closing each person was given opportunity to rededicate his life and pledge himself to keeping the meaning of Christmas this year.—Margaret Swan, Reporter.

honored were Bob McClure, Richard Porter, Paul Shillings, Arlie G. Turner, Ernest R. Tims and Paul Bean.

It was a great and inspiring worship service, given by our students and we are indeed proud of them.—Mrs. Floyd Rogers, W. S. C. S. Secretary of Student Work.

METHODIST CHILDREN'S HOME REPORT

MEMORIALS

IN MEMORY OF:

Mr. F. N. Powell, by Mr. and Mrs. H. L. Joines, Mr. and Mrs. Ned Baker and Mrs. F. N. Powell
Rev. W. L. Arnold, by Rev. and Mrs. T. T. McNeal
By Mr. W. E. Wilkins for Children's Christmas
Miss Valerie Cazort, by Methodist Camden District
Mrs. Herbert Smith, by Dr. and Mrs. C. C. Roberts
Mrs. Herbert Smith, by Mr. and Mrs. Roy V. Hill
Mrs. Inez Reder Smith, by Mr. and Mrs. R. M. Knox and Mr. and Mrs. Wayne E. St. John
Miss Valerie Cazort, by Delta Kappa Gamma
Mrs. Eugenia Moore, by Mr. and Mrs. Franklin E. Loy and Diana
Mr. Walter Lee Yeldell, by Mr. and Mrs. Franklin E. Loy
Mr. J. M. Johnson and Mr. Chester Johnson, and Rev. E. D. Hanna, by Miss Kathleen Johnson
Rev. and Mrs. H. C. Adams, by Dr. and Mrs. H. E. Ruff
By O. D. Hadfield for Children's Christmas
By Mr. H. W. Trigg for Children's Christmas
Mrs. Marion Hudson, by Mr. and Mrs. C. W. Meador
Rev. W. L. Arnold, by Rev. and Mrs. George G. Meyer
Mr. George Tafer, by Dr. and Mrs. E. L. Davis
Rev. W. L. Arnold, by Mrs. J. W. Pirtle
Her Mother, Mrs. Charline Person, by Lucy Mae Person
Mr. Wilburn M. Slayton, by Mr. and Mrs. Bob Carlisle and Kay Carlisle
Mr. and Mrs. J. H. Warrick, by Mrs. E. L. Peterson
Mr. John W. Mann, by Mrs. O. L. Williamson
By W. S. C. S. for Children's Christmas
Mrs. J. D. Cargile, by Mr. and Mrs. G. M. Floyd
Mr. S. A. Rolfe, by Mrs. Emory Sweet
Mrs. Loyd (Lydia) Meyers, by Faithful Workers Class
Mr. Herbert Scott, by Mr. and Mrs. R. E. Short and Mr. and Mrs. R. E. Short, Jr.
Mrs. Erica M. France, by Mr. James C. Hale
Rev. W. L. Arnold, by The W. F. Cooleys
Rev. G. G. Davidson, by Methodist Men's Bible Class, Siloam Springs
Mr. G. S. Rumph and Miss Mary Wilkin, by Mr. and Mrs. Charles Wilkin and Bob Wilkin
Mr. R. L. Garner, by Rev. and Mrs. M. L. Kaylor
Mr. W. C. Walker, by Dr. and Mrs. Jack D. Moore and Family
Mr. W. C. Walker, by M. Y. F. Forrest City
Mr. W. C. Walker, by Mr. and Mrs. Chas. S. Shively
Mr. L. W. "Fritz" Reid, by Mr. and Mrs. Harold D. Woodfin
Mrs. E. J. Berry, by Mr. James C. Hale
Mr. Clement Walker, by Mr. and Mrs. Virgil Vandiver
Rev. G. G. Davidson, by Dr. James D. Huskins
Mrs. Ruth Hohenschultz, by Miss Margaret Haley

(Continued on page 15)

AREA METHODIST CIRCULATION CAMPAIGN

(Continued from page 9)

	New	Ren.	Not Due	Total
RUSTON DISTRICT—Quota 1469				
Arcadia, Hubert A. Gibbs	61	9		70**
Athens, Samuel B. Dampier	13	2		15
Bernice, Roy Grant	33	2	1	36**
Bienville, L. P. Moreland	38	14		52**
Calhoun, A. M. Wynne	18	8		26**
Chatham, J. T. Garrett	70	1	10	81*2
Choudrant, M. L. Davis	67			67*2
Clay, J. W. Boyd, Sr.	28	1		29**
Cotton Valley, J. P. McKeithen	27	4		31**
Dubach, H. Preston Holley	17	3		20
Downsville, Fred A. Mead	7	18		25
Doyle, H. M. Law	12	24	1	37**
Eros, A. E. Wingfield	22	2	2	24**
Farmerville, B. E. Bond	16	3		19
Gibbsland, James L. Beasley	48	5		53**
Haynesville, W. D. Milton	46	2		48
Hodge, G. A. Morgan	11	17		28**
Homer, Luman E. Douglas	79			79
Jonesboro, W. O. Lynch	75	17		92**
Lisbon, Wm. C. Barham	25	7		32**
Marion, Edwin L. Brock	3	3	1	7
Minden, Ira W. Flowers	103	4		107
Minden (New Church), Harvey Williamson	44	3		47**

Ringgold, D. G. Anders	20			20
Ruston Churches:				
Grace, D. L. McGuire	27	4		31**
Trinity, R. R. Branton	114	5	2	121
Shongaloo, Paul Cassels	44	11		55*2
Simsboro, J. C. Rousseaux, Jr.	6	1		7
Sibley, L. M. Sawyer	9	6		15
Springhill, W. D. Boddie	73	15		88**
TOTALS	1156	185	21	1362

SHREVEPORT DISTRICT—Quota 2419				
Belcher-Gilliam, L. A. Belcher	6			6
Bethany-Keithville, R. F. Debusk	3			3
Benton, L. A. Carrington	22			22*
Bossier City, First Ch., W. R. Wendt	34	1		35
Bossier City, Curtis Park, H. C. Norsworthy	59			59**
Converse, H. T. Isgitt	9			9**
Grand Cane, Wm. V. Sirman	4	22		23**
Greenwood, T. M. Lancaster	12	23	1	36**
Hall Summit, Rex Squyres	54			54**
Haughton, W. M. Allen	17	24		41**
Ida-Hosston, James R. Strozier	28	3	1	32**
Loganport, Sidney A. Seegers	22	36		58**
Mansfield, George W. Harbuck	58			58**
Mooringsport, Kenneth G. Rorie	10	20		30**
Oil City, Wm. T. Hall, Jr.	10	4		14**
Pelican, Luther A. Bodie	32		1	33
Plain Dealing, Frank C. Collins	8	38		46**
Pleasant Hill, Glen Allen Smith	20			20
Rodessa, Clayton W. Bennett	4	3	1	8
Shreveport Churches:				

Broadmoor, Leonard Cooke	65			65
Caddo Heights, Garland C. Dean, Jr.	8	4		12
Cedar Grove, R. Mack Bentley	136	1		137**
Morningside, J. J. Caraway	31	5		36
Noel Memorial, John J. Rasmussen	186			186
North Highland, John Koelmay	10	4		14*
Park Ave., C. Reginald Hardy	26	8	1	35
Wynne Memorial, J. B. Grambling	17	17		34
Zwolle, A. D. St. Amant, Jr.	5	31		36*
TOTALS	874	266	5	1145

THE LOUISIANA METHODIST DISTRICT SUMMARY

REPORT NO. 2

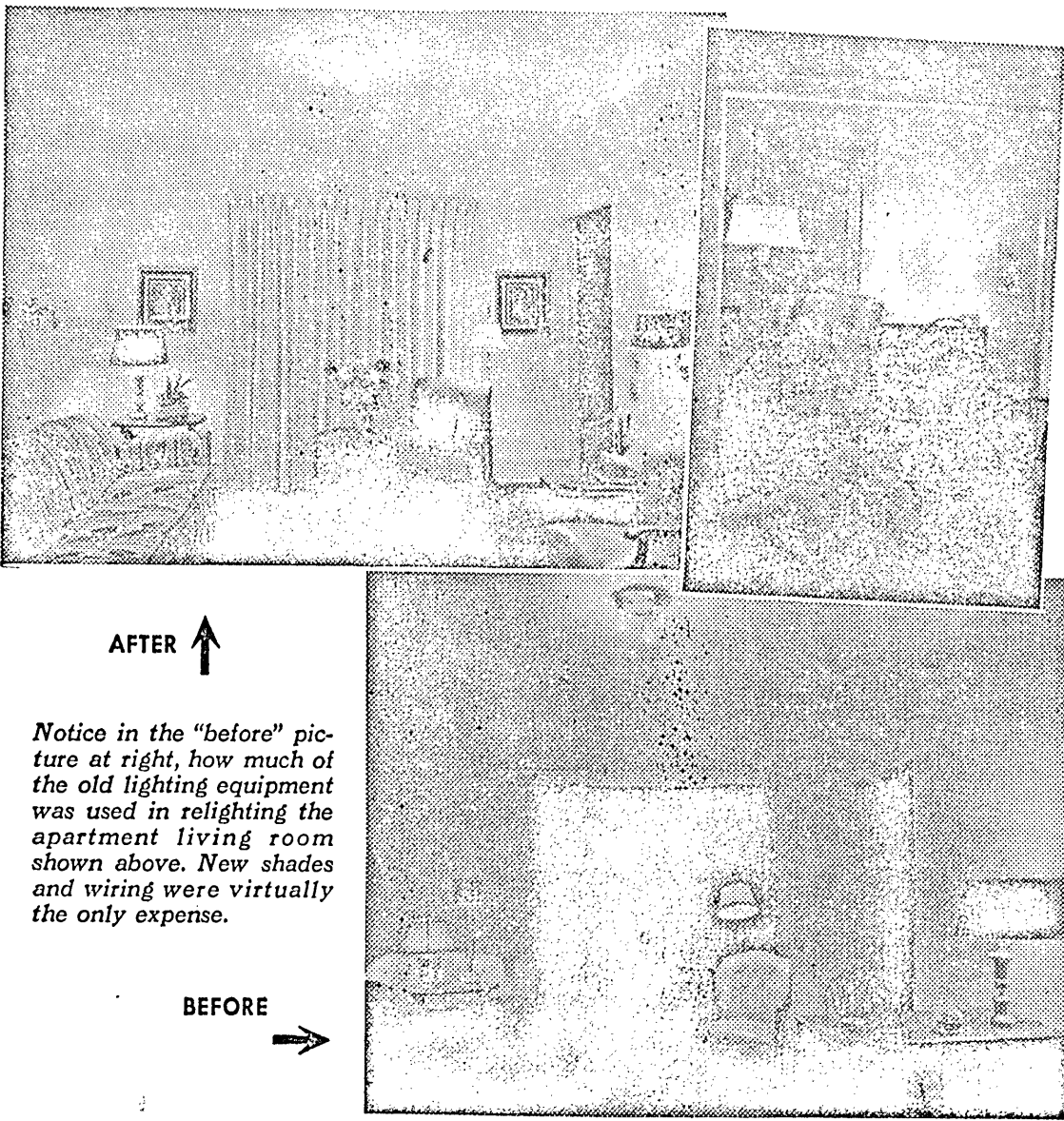
District	Quota	New	Ren.	Not Due	Total	% of Quota
Monroe	1609	918	543	104	1570	98%
Ruston	1469	1156	185	21	1362	93%
Shreveport	2419	874	266	5	1145	47%
Alexandria	992	615	396	5	1016	102%
Baton Rouge	1828	739	195	1	935	51%
Lake Charles	1454	441	128	1	570	39%
New Orleans	1744	447	56	2	505	29%
TOTALS	5190	1774	139		7103	

* Charge has reached quota.
** Charge has exceeded quota.
*2 Charge has doubled quota.
*3 Charge has trebled quota.

METHODIST CHILDREN'S HOME REPORT
(Continued from page 14)

Mr. Wilburn Slayton, by Lydia S. S. Class, Gurdon, Ark.	
Mr. Julius C. Gray, by Mr. Sam Bowman	
Mr. Tom Ed Scott, by Dr. and Mrs. Elmer L. Davis	
Mrs. Eam Austin, by Mr. and Mrs. W. J. Frank	
Miss Inez-Cook, by Mr. and Mrs. W. C. Shepherd	
TOTAL for Memorials	\$508.50
OTHER GIFTS	
Ewing T. Wayland	\$ 5.00
P. E. Cooley, Treasurer North Arkansas Conference	632.15
Circle No. 4, Forrest City Methodist Church	15.00
W. S. G. Methodist Church, Leachville	5.00
Mr. & Mrs. O. G. Robison	1.00
Berean Class, Paris Meth. Ch.	6.04
Miss Betty Derrick	10.00
Cecil R. Culver	17.08
Yancey S. S. Class of Marianna Methodist Church	10.00
Wesleyan Service Guild of Osceola Methodist Church	120.00
G. E. Hayes, Treasurer, Little Rock Conference	321.00
Meth. W. S. C. S. of Bay, Ark.	10.00
Men's Bible Class, Russellville Methodist Church	10.00
Men's Bible Class, Forrest City Methodist Church	30.00
Mr. and Mrs. J. M. Barker, Sr.	10.00
Mrs. Pauline E. McLain	5.00
Jett B. Graves S. S. Class, Hope	5.00
Mr. Poteet	10.00
Mrs. R. H. Wolfe	12.50
Miss Ella Anderson	5.00
Mr. and Mrs. Webb Sweet	120.00
Tomberlin W. S. C. S.	10.00
Mrs. Mona R. Moore	9.14
Mrs. M. R. Stimson	6.00
Mr. W. A. Bruce	25.00
Ed Hirsbruner (Judge Clarks' Class)	120.00
Mr. Carroll Thomas	10.00
Grimes Gold Williams Circle	5.56
Mrs. R. H. Williams	2.04
C. T. Cotham, Executor, Estate of Jessie Hotchkiss Smith	200.00
Harvester S. S. Class, Batesville First Methodist Church	16.00
Mr. and Mrs. C. V. McKinney	25.00
Russellville Sub-District M. Y. F.	25.00
Arkansas Valley Sub-District M. Y. F.	50.00
The Girls' Friendship Group, Brookland Meth. Ch.	5.00
Susanna Wesley Circle, Texarkana	5.00
Mountain Pine Union Sunday School	10.00
Brinkley Louise McCreight Class	7.25
Mayme Smith	20.00
Cecil R. Culver	6.35
E. T. Wayland	6.35
Rev. and Mrs. M. L. Kaylor	5.50
Thomas R. Ramsey	100.00
Mrs. T. E. Scifres	25.00
Men's Bible Class, aBtesville Methodist Church	10.00
Bennie Flerny	5.00
Sue Taylor	5.00
Chas. L. Davidson, c/o Stone Mountain Grit Co., Lithonia, Ga.	50.00
Camille Blankenship, Warren	10.00
Herbert R. Riggan, Men's Bible Class, Marion	50.50
Osceola Men's Bible Class	9.14
Miss Cecelia Dancer	1.00
R. C. Davis	1.00
P. H. Pewitt Royalty	1.92
Men's Bible Class, Gardner Memorial Class, N.L.R.	19.00
Mrs. Oliver M. Lewis	1.00
Ida Chandler	10.00
Mrs. H. W. Richards, Newell-ton, La.	100.00
Mr. E. L. Moseley	20.00
Clyde Higgins	1.00
Sub-District M. Y. F. Bentonville	6.00
Mr. and Mrs. W. E. Greenhaw	5.00
May Tag Sales and Service (Mrs. W. E. Wilson)	100.00
C. E. Hays	2.50
Dr. George W. Parson	25.00
Miscellaneous	25.69
TOTAL	\$2,512.71
	\$3,021.21
T. T. McNEAL, Director	

NEW LIGHTING GIVES NEW CHARM TO APARTMENT HOMES



Notice in the "before" picture at right, how much of the old lighting equipment was used in relighting the apartment living room shown above. New shades and wiring were virtually the only expense.

So many times apartment dwellers are confronted with harsh, uncomfortable lighting, that we are glad to show above how easily and successfully a drab room can be converted into a cheerful one. First, we placed inexpensive clip-on shades on the bare bulb ceiling fixture. All that was needed to improve the bridge lamp was a white shade and a 100-watt white bulb. The table lamp was moved to an end table beside the sofa where it is just right for reading. And across the room, a new pin-to-wall lamp supplies another comfortable reading spot. Simple and economical, it's an idea you might want to use.

Arkansas
POWER & LIGHT
Company
HELPING BUILD ARKANSAS

FOLDING CHAIRS
In Steel or Wood
FOLDING BANQUET TABLES
WRITE FOR CATALOGUE
AND LOW DIRECT PRICES
J. P. REDINGTON & CO.
DEPT. 11 SCRANTON 2, PA.

The Sunday School Lesson

By REV. H. O. BOLIN

Lesson based on "International Sunday School Lessons; the International Bible Lessons for Christian Teaching," copyrighted 1951 by the Division of Christian Education, National Council of the Churches of Christ in the U.S.A.



LESSON FOR FEBRUARY 3, 1952

HOW CAN A SINNER FOLLOW CHRIST?

READ THE ENTIRE LESSON FROM YOUR BIBLE:
Luke 7:36-50.

GOLDEN TEXT: Your sins are forgiven. (Luke 7:48)

Aim of Unit

"To lead men and women to think about some of the ways in which persons follow Christ, inspired by some of the early followers of Jesus."

Time and Place

This event took place in the summer of A. D. 28. The place is not designated in the Scripture, but some scholars think it took place in the village of Nain in Galilee. It will be noted that on another occasion Christ raised the widow's son back to life in this village.

A Look at the Scripture In Simon's House

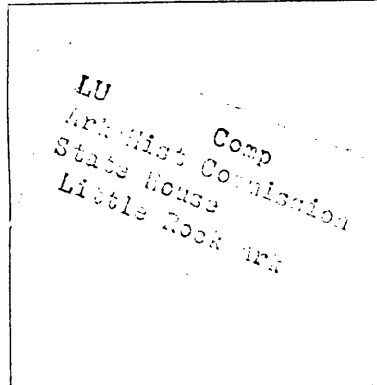
The lesson opens with the account of Christ receiving an invitation to eat in the home of a certain Pharisee by the name of Simon. The English translation goes on to say: "The Pharisee desired him that he would eat with him." The Greek word from which the word "desired" comes implies that Simon pressed Christ; he was very anxious that the Lord eat with him.

This is all to Simon's credit. Like Nicodemus, Simon has been too harshly criticized down through the years. Let it be noted that he was a Pharisee and the Pharisees in general were harshly opposed to the Lord. The rank and file of the Pharisees looked upon Christ as a sinner. Some of them even went so far as to say that he was possessed of a demon. Their religion forbade that they associate with such characters as they considered Christ to be, especially that they eat with them. In spite of all this Simon not only ate with Christ but invited him as a dinner guest into his home.

Simon has also been criticized for not extending to the Lord the common courtesies of his day. But let it be noted that Simon did not intend this as a slight to Christ. Verse 49 shows that other guests were present on that occasion and they had received the same treatment as had the Lord.

Some may wonder how this sinful woman so easily found her way into the house of Simon. This came about through the customs of the East. In our section of the world, a man and his

guests have privacy in his home, but such was not the case then or even now in Palestine. The guest-chamber door is always open and people who so desire (even strangers) can drop in the room while the guests are being entertained. They often did this to listen to the conversations. The chances are that this woman was by no means the only one who came from the street into the guest-chamber on this occasion. We need also to note that the people of that day and place were in the habit of reclining at their meals with their feet protruding



behind them. This made it possible for the sinful woman to bathe the feet of the Lord with her tears, wipe them dry with her hair, and anoint them with nard.

The account given here plainly indicates that the woman had previously met the Lord. Her sins had already been forgiven. Christ was here publicly announcing what had already taken place in the woman's experience. The Lord plainly attributes the woman's great love to the fact that she had been forgiven much. Before coming into Simon's house she had the matter of showing her appreciation all planned. She carried the precious nard, with which to anoint the Master's feet, along with her. One thing she had not anticipated was the fact of her tears. She brought nothing with which to dry his feet. This difficulty was overcome by the use of her long hair. Some connect this woman with the one spoken of in John 8:1-11. This particular woman was caught in the act of adultery, and brought before the Lord for his condemnation. The men who brought her could

not stone her for they, too, were sinners. The Lord forgave her. Some think she came on the occasion of the lesson to express her gratitude.

Simon's Mistake

Simon made a mistake. He misjudged the Lord. His mistake came about through his training as a Pharisee. The Pharisees would have nothing to do with sinners and they considered all to be sinners except their own group. We have some modern Pharisees in a few smaller branches of the Church; people who argue that they are the only one who are, or can be, true Christians.

Simon had been taught that religious people should have nothing to do with sinners. He knew that this woman was a sinner. Christ permitted her to touch him; to even go so far as kiss his feet. Simon reasoned that the Lord did this because he did not know what kind of woman this person was. He had hoped that the Lord would prove to either be the Prophet, whom the Jews expected to come as a fore-runner of the Messiah, or even the Messiah himself. Now doubts begin to come into his mind. This man, he reasoned, could be neither the Prophet nor the Messiah, otherwise, he would know what kind of person this woman was and would not permit her to touch him.

Simon's mistake did not come about through his reasoning, for if what the Pharisees taught were true, then his reasoning was sound. His mistake came about through the fact that the Pharisees did not understand the type of person the Messiah was to be. They did not understand the attitude he would have toward sinners and the fact that in the age of grace the darkest sins could be forgiven.

Lessons for Simon

The Lord taught Simon some great lessons. First, he taught him that sins can be forgiven, even sins of uncleanness. The Law said, "The soul that sinneth it shall surely die;" it shall be cut off from the people of Israel. The Law had but one voice for the adulterer and the adulteress, the voice which was the knell of a sharp and fearful doom, without reprieve or mercy of any kind. Its command was that such should be stoned to death. But Jesus came to man with a message of mercy and hope. He proclaims a deliverance from the sin and a pardon for the sinner. He offers himself as the forgiver of sin and the Saviour from sin. He speaks life where the Law spoke death. He offers hope where the Law has nothing to give but despair.

Christ taught Simon another lesson. He taught him to judge himself as well as others. In fact the Master would have all of us be hard on ourselves and a bit easy on others. It is easy

to see sins in the lives of others but hard to see them in one's own life. It is said that the conception of sin is growing rather dim, but there is still quite a bit of confession going on; people are busy confessing the sins of others rather than their own.

To enable Simon to see himself as he really was Christ held the deeds of the woman up before his face as a mirror. He began this procedure by the use of a parable. There were two debtors. One owed ten times as much as the other. When it was seen that they could not pay, the creditor freely forgave both of them. "Which," asked Jesus, "would love him most?" Simon naturally answered that it would be he who had received the greater amount of forgiveness. Then, the Lord proceeded to compare Simon's omissions to the beautiful deeds of love performed by the woman. Simon had failed as a host to give him water for his feet, but the woman had washed them with her tears. Simon had failed to give him a kiss of friendship, but this woman had not ceased to kiss his feet. Simon had not anointed the Master's head with oil (as was the case when a guest was to be highly honored) but this woman had anointed his feet with ointment; or nard. Then, the Lord declared to Simon that the sins of this woman, which were many, were all forgiven.

A Happy Ending

Then, Jesus went on to say to the woman, "Thy sins are forgiven; thy faith hath saved thee; go in peace." Such is the Divine order everywhere and always—Faith Love, Peace. Faith is the procuring cause, or the condition of salvation; love and peace are its afterfruits.

Now, may we close the lesson with a quotation from Dr. Henry Burton:

"She went in peace, 'the peace of God which passeth all understanding;' but she left behind her the music of her tears and the sweet fragrance of her deed, a fragrance and a music which have filled the world, and which, floating across the valley of death, will pass up into heaven itself!"

"There was still one little whisper of murmuring, or questioning rather; for the guests were startled by the boldness of his words, and asked among themselves, 'who is this that even forgiveth sins?' But it will be noted that Simon himself is no longer among the questioners, the doubters. Jesus is to him 'the Prophet,' and more than a prophet, for who can forgive sins but God alone. And though we hear no more of him or of his deeds, we must rest assured that his conquered heart was given without reserve to Jesus, and that he too learned to love with a true affection even with the 'perfect love which casteth out all fear.'"