

Arkansas Methodist

Serving One Hundred and Sixty

and Methodists in Arkansas

"The World is My Parish" — John

ye into all the world — Mark 16:15

VOL. LXX.

LITTLE ROCK, ARK.

SAS, DECEMBER 13, 1951

NO. 48

A Valuable, Helpful Christmas Gift

THERE are numbers of people our readers could make very happy by sending them THE ARKANSAS METHODIST or THE LOUISIANA METHODIST as a Christmas gift. Such a gift would not only be helpful, but it would be a weekly reminder of your thoughtfulness.

Such gifts, of course, should be made to people who are not now regular subscribers to our church papers. They may be friends or relatives outside of the state; they may be shut-ins who are members of your church who do not receive the paper or they may be families of your church that do not feel able to have the paper.

If you would like to send the paper to a friend, if you will send in that subscription to our office, indicating that the paper is a Christmas Gift, our office will be glad to notify your friend, on an appropriate card, that the paper is being sent by you as a Christmas gift. In doing so, if you will also give us your pastor's name your charge will be credited with the subscription on its quota.

Some of our pastors are urging their people to give their church paper as a Christmas gift to some one that might not otherwise receive it. It would be an inexpensive Christmas gift, but valuable and helpful.

Campaign Materials To Be Mailed Soon

USUALLY the major portion of the materials for use by pastors in the Circulation Campaign in the local charge are mailed immediately following Christmas in order to avoid the rush of the Christmas mail. Since the opening date for the Circulation Campaign comes so soon after Christmas, this year, it is necessary to mail the material before Christmas.

We plan to mail these materials the last of this week or the early days of next week. Unavoidably they will reach our pastors along with the general rush of Christmas mail. We sincerely urge our pastors to watch for these materials and preserve them for use in the Campaign December 30th through January 6th.

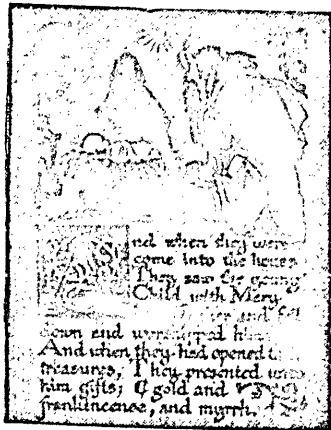
There will be mailed Campaign Posters which we hope will be put up in a prominent place in the church to remain through the Campaign period. Pastors will receive, in duplicate, alphabetical lists of subscribers from the charge. One list will be for the pastor's use in the Campaign, the other for use in reporting renewals to our office. There will be blanks for reporting new subscribers. We are mailing coin envelopes for use in the charge in the Campaign in securing new subscriptions or renewals. There will be inclosed a sheet of suggestions which we hope will be carefully read. District quota sheets will be sent each pastor. Our pastors in Arkansas are familiar with the use of these materials. We hope they will prove equally as helpful to our pastors in the Circulation Campaign in Louisiana.

This will be our first Area-wide Circulation Campaign. We are hoping that in Arkansas this will be the most successful of the eleven Circulation Campaigns we have had in the state. The wonderful response we have in every other way in Louisiana leads us to expect that the Circulation Campaign will go over in a big way in Louisiana.

"Immanuel... God With Us"

A skeptic once said, "The mission of the 20th century is to find God. When we find Him we will find that He does not care." There is one thing wrong with both of these statements—they are both untrue. We have not waited until the 20th century to find God. Since the dawn of creation the better people of earth have been in touch with God and the one outstanding revelation God has given regarding Himself is that He does care.

That earth's people might know just how much God loves and cares, Jesus was born in Bethlehem. Matthew quotes Isaiah as saying of that holy event, "They shall call his name Immanuel, which be-



ing interpreted is, God with us." The most perfect revelation God has given the world of Himself has come through the Christ because Christ was God in Person living "with us."

The word "Immanuel"—God with us—describes the meaning and the purpose of the coming of Christ to the world. If we want to know what God is like, we need but study the life of Jesus from His humble birth until clouds hid Him from the sight of the disciples at the time of His ascension.

A few hours before the arrest of Jesus, Philip said to Him, "Show us the Father." The reply of the Master was, "He that hath seen me hath seen the Father." In the Old Testament we have a marvelous revelation of the might, majesty, holiness and justice of God. We are inspired to reverence, worship and serve such a God. In the New Testament the clear, impressive revelation of the love of God, as demonstrated in the mission and ministry of Jesus, leads us not only to reverential worship and service, but, as John declares, "We love him because he first loved us."

In the world in which we live, needing so badly as we do some Supreme Power that understands us and cares for us, it is a comforting experience to remember that the God we worship is like the Christ of Galilee. As Christ "went about doing good" so the Spirit of God moves in the life of the world today for that one purpose. May this Christmas season bring us a new sense of the fact that a God, who is like Christ, is still at work in the world just as truly as Jesus loved and served humanity in Palestine.

Support Methodist Children's Home

ON Sunday, December 16, Arkansas Methodists will be remembering in a very special way the Arkansas Methodist Children's Home. This remarkable institution, owned and operated by the two Arkansas Conferences, renders in a very real sense a work of love and devotion which any one of us would like to do, yet the combined gifts of all of us make possible this work in a larger and better way than any one of us could do.

Offerings received during the Christmas season for the Methodist Children's Home constitute the major source of income for the operating and expansion program of this institution.

Those who know the program of the Arkansas Methodist Children's Home know that the work of this institution is a credit to the Kingdom. What service it renders it renders well and the amount of the service it renders is limited only by the amount of funds made available for expansion and operation. Almost any day will find the Home's administration forced to deny a Christian home to children who need the redeeming work of love about them.

Arkansas Methodists have responded well, financially, in the past to the Methodist Children's Home, and the building program of recent years at the Home's campus is a tribute to Methodists' concern for children. Still other facilities are needed and these will undoubtedly be provided as your gifts permit. Make your gifts through your church for in this manner your local church will not only be credited with your contribution but such procedure will stimulate greater interest on the part of others in this great institution of Arkansas Methodism. Your gifts will help to continue this great ministry of the church.

Area "Unit A" In Great Victory

ONE of the greatest thrills we have ever experienced has been the United Evangelistic Mission successfully concluded last week in Unit A of the Arkansas-Louisiana Area. We had the unusual privilege of being in each of the nine participating districts during the course of the Period of Operation of this program and everywhere that we went it was the same thrilling story, hundreds of persons being led into a new experience of Christ and His Church. Final figures will reveal that more than five thousand persons will have been reached for Christ and His Church during this period.

The marvelous results obtained can in a large measure be attributed to five factors: (1) the local churches of the Louisiana Conference and the Camden and Hope Districts of the Little Rock Conference had prepared well for the Period of Operation; (2) the leadership of the program proceeded prayerfully with the program as outlined in the beginning; (3) Lay workers responded exceptionally well and convincingly presented the challenge of the Christian gospel to prospects; (4) God was given a chance to work through people to reach people; (5) the Arkansas ministers who were assigned to work with Unit A charges were altogether equal to their tasks. The results as seen in the numbers of persons won does not reflect in any sense the measure of good accomplished. Many persons interviewed will make favorable decisions later. A vast amount of training in evangelistic tech-

(Continued on page 5)

"Unit A" Concludes UEM Program

By EWING T. WAYLAND

IN continuing this account of the Mission A Period of Operation of the United Evangelistic Mission we go next to the Monday morning session of the Shreveport District School of Evangelism. The host and visiting pastors met at the First Methodist Church, Shreveport, 9:45, to turn in reports of the work of Sunday and to join in the period of "coffee" fellowship that either "precedes or succeeds" any meeting in Louisiana. Dr. J. Henry Bowdon, Shreveport District Superintendent had planned his District program well as evidenced by the reports from the first day.

Rev. Paul M. Bumpers, Marked Tree, the Shreveport District instructor in Visitation Evangelism, prefaced his instruction with the thought that God, good men and good methods are needed in any spiritual movement that succeeds. The instruction chart "They went Forth Two by Two" used as a basis for Visitation Evangelism instruction, continues to stimulate the ministers who are to teach others visitation techniques. This chart is like the Scriptures in that everytime its pages are studied one receives new ideas and suggestions. Instruction from it often prompts suggestions among those receiving instruction out of their experience. This particular session was a helpful one in that there was a considerable sharing of experiences by the ministers.

Rev. Rufus Sorrells, Scott Street Methodist Church, Little Rock, was the Pulpit Evangelism instructor for the Shreveport District. In his presentation Brother Sorrells stressed the goals sought in the U.E.M., the seeking of personal commitments of those who need Christ and the Church, and the meeting of the needs of people, whether they are in or out of the church, pointing out that evangelistic preaching that is logical with honest, emotional content and expectant in its outlook, usually has beneficial result among hearers.

Results of Sunday's activity in the Shreveport District, announced by Dr. Bowdon, revealed that out of 652 interviews made Sunday afternoon, 86 commitments on profession of faith and 146 transfers of membership or a total of 232 decisions had been secured. These daily announcements in the District Meetings were naturally received with a great deal of interest.

Rev. J. Kenneth Shamblin, pastor of Pulaski Heights Methodist Church, Little Rock, was the inspirational speaker during the week for the Shreveport District of Evangelism. However, on Monday, Rev. Joe Z. Tower, District Superintendent Longview District, Texas Conference, spoke to the ministers, substituting for Brother Shamblin who had been called to Little Rock for a funeral service. Dr. Tower in his address suggested that first the evangelist must be evangelized, that Christ should have first place in the ministers' lives and that as min-

isters of Christ they must be true to their calling.

During the lunch hour which followed announcements were made of the result of Sunday's work throughout the mission. 4,203 interviews had resulted in 543 persons making first decisions for Christ and 910 persons transferring their membership to become active in a local church.

Monroe District

On Monday evening we visited what would be a typical "new" church in a new section of a city, the Memorial Methodist Church, Monroe, Rev. Ralph Cain, pastor. This congregation, barely six years old, already has an active membership of 500 members, has constructed an Educational Building, acquired a parsonage, and has developed an organized program commensurate with its opportunities. Rev. Mark F. Vaught, First Methodist Church, Stuttgart, was assigned to work with this Church during the U.E.M.

Seven teams of lay men and women were present for the evening meal and to receive instruction in visitation. The instructor, Brother Vaught, stressed the importance of not only using good methods but working in the right spirit, as he gave the visitation lecture on the "Nine Steps of Effective Visitation."

A goodly number of worshippers were present for the worship service which followed the period of instruction and during the period when the lay visitors were visiting prospects for commitments. A helpful feature of the service was the prayer period when worshippers gathered at the altar to offer their own petitions. Brother Vaught's message dealt with the theme "If I were a Layman" in which he pointed out that every lay Christian should unite with and be loyal to a church, should be an active servant of the Church and the Lord, and should be an evangel of the Christian message. The message truly exalted the place of lay persons in the work of the Church.

Following the evening service reports were received in the church office from the lay visitors returning from assignments. One is always thrilled to hear the accounts by lay visitors of their experiences in visiting those who need Christ and an active relationship to a local church.

On Tuesday morning the Monroe District pastors and ministers assigned to work with them met at the First Methodist Church, Monroe, for the third session in the District's School of Evangelism. Dr. W. H. Giles, District Superintendent, Rev. J. Albert Gatlin, Conway, Visitation Evangelism Instructor, Rev. Horace M. Lewis, Springdale, Pulpit Evangelism Instructor, and Dr. W. Henry Goodloe, Inspirational Speaker, led in the morning's program. Brother Gatlin, substituting for Rev. Mark F. Vaught, Stuttgart, on Tuesday, laid special emphasis in his instruction on a continuous program

of evangelism in the local church. Brother Lewis spoke effectively concerning pulpit evangelism on the "Marks of An Evangelist", saying that the evangelist must be willing to follow the will of God, must possess some deep convictions about the Gospel, and must have a profound conviction of the importance of the Christian Church. Dr. Goodloe, Fort Smith, District Superintendent, in his inspirational address spoke understandingly of the "Resurrection Gospel" basing his remarks on passages from II Corinthians. Implications of the Resurrection Gospel, according to Dr. Goodloe, are that the Gospel is eternal, God is never defeated in this world, and that man can be raised from death in sin to righteousness in new life.

During the lunch hour reports from over the Area revealed that on Monday night there had been 3222 persons interviewed, 412 per-

sons making first decisions for Christ and 555 persons pledging to transfer their membership to a local church in communities where they now live. By this time it was quite evident that unusual success would attend the efforts through the program.

Alexandria District

On Tuesday evening at the First Methodist Church, Pineville, Rev. George Dameron, pastor, there were seven teams present for the period of visitation instruction by Rev. Cecil R. Culver, who worked with this church during the week. In this situation there were two different groups of teams visiting, each group alternating with the other on successive nights. The emphasis during the period of instruction was on the matter of getting a decision during the period of an interview. Prior to the Tuesday evening's program.

(Continued on page 3)

Left, center: Adult and Youth Leaders at the Camden District Youth Rally: left to right: Rev. D. L. Dykes, Jr., Fayetteville, featured speaker at Youth Rally; Dr. Connor Morehead, Camden, District Superintendent; Mrs. Frances McLean, Magnolia, Little Rock Conference Director of Student Work; Ronnie Collums, Smackover, President of Camden District Methodist Youth Fellowship Organization; Rev. A. C. Carraway, Smackover, Camden District Director of Youth; and Charles Cook, Chairman of the Little Rock Conference MYF Community Service Commission.

Left, lower: Group of lay visitors of the Memorial Methodist Church, Monroe, Rev. Ralph Cain, pastor, having their evening meal just prior to receiving visitation instruction from Rev. Mark Vaught, Stuttgart, assigned to work with this church. Brother Vaught later delivered the Evangelistic message to the church congregation in the Monday night service.

Right, upper: Reports being received by Lay Visitors of the First Methodist Church, Pineville, Rev. George W. Dameron, Pastor, Alexandria District.

Right, center: Results of the Unit A among the Districts were shared each day during the noon hour by means of a special telephone arrangement. Here is pictured Rev. Earl B. Emmerich, Rayville, and Rev. Ralph Cain, Memorial Methodist, Monroe, participating in the telephone circuit receiving and giving results of the previous night's program. Brother Emmerich is the Monroe District Director of Evangelism.

Right, lower: Rev. Elmer J. Holifield delivered the Inspirational Address at the Ruston District meeting Friday night, November 30. Ruston District meetings were held at the First Methodist Church, Arcadia, Rev. Hubert A. Gibbs, Pastor.

Left, upper: The Capacity crowd of Young People and their Adult Leaders attending the Camden District Youth Rally at Magnolia.

"UNIT A" CONCLUDES UEM PROGRAM

(Continued from page 2)

gram there had been eight decisions and during Tuesday evening five more decisions were secured.

In the congregational worship service that followed the period of instruction Brother Culver brought a stirring message on "Not Ashamed of the Gospel." The report meeting afterwards was an occasion for the sharing of experiences by the visitors who made their reports to the pastor and Brother Culver.

The First Methodist Church, Alexandria, Rev. Virgil D. Morris, pastor, had a worship service each morning at 7:25 for its members. Rev. Mr. Culver was the guest preacher at these services. On Wednesday morning the service was well attended and those present heard Brother Culver speak on "How Do You Think of Religion." These services were recorded and later broadcast by an Alexandria radio station.

At 10:00 a. m. the Alexandria District School of Evangelism met at Alexandria First Church under the direction of Rev. Jolly Harper, Alexandria Superintendent, Rev. John Bayliss, Pocahontas, Pulpit Evangelism instructor, Rev. John Hefley, Arkadelphia, Visitation Evangelism instructor, and Dr. Aubrey G. Walton, inspirational speaker. The visitation instruction dealt primarily on Wednesday with "problem cases." This discussion proved to be very helpful as many problems and experiences with problem prospects were shared by the host and visiting ministers.

Brother Bayliss was heard with much appreciation for his discussion of the "Characteristics of a Good Evangelist," as he continued his instruction in pulpit evangelism. In discussing the evangelist's faith and spirit, the instructor pointed out the evangelist's belief in the gospel he preaches and his concern for people as persons is of primary importance.

Dr. Walton's inspirational message was on the theme "He That Winneth Souls Is Wise," in which he emphasized the worth of the human soul, that human souls can be won, and the wisdom of winning one's own soul as well as the souls of others. Dr. Walton's messages were the means of much inspiration to the host and guest pastors.

During the lunch hour that followed, reports from over Mission A were given of Tuesday night's program, revealing that 2124 lay persons making 2858 interviews had secured 399 first decisions for Christ and 495 transfers of membership. Almost 2,000 persons had been in attendance in the services of worship. The spirit of the whole program was thrilling to experience.

In the Alexandria District was located the headquarters for Unit

pastor, was the U.E.M. program of visitation evangelism. Rev. Martin Bierbaum, St. Paul's Methodist Church, Fort Smith, had been assigned to work with the DeRidder congregation during the week, and any visitor in the evening meal period of instruction and evening congregational worship service would have been impressed with the wonderful, wholesome spirit manifested by these people.

The period of visitation instruction centered on dealing with family situations. The visitors which until that night had secured 22 commitments, were the means of leading 6 other persons to decisions during the course of that evening's work.

Youth night was being observed on Wednesday evening and 33 young persons were present for the service in addition to a large group of children. The service was exceptional for the spirit of participation by the worshippers. A fine youth choir under the director of Louis Blankenbaker, talented DeRidder high school student, was an inspiration to the service. An intermediate group of boys served as ushers for the service and received the evening offering.

Brother Bierbaum's message dealt with the theme "What's The Use, I Don't Count For Much" in which he emphasized that each person possesses infinite importance in the sight of God. The report meeting for the lay visitors following the worship service was the most organized

and formal of any we visited. Each team in turn made its report, sharing its experience with other teams to the profit of all concerned.

On Thursday morning the Lake Charles District School of Evangelism met for its last session, as geographical considerations prompted the holding of only five district training sessions. Rev. George Pearce, Jr., District Director of Evangelism, presided at the morning sessions. Rev. Karl Tooke, Lake Charles District Superintendent, Rev. Ethan Dodgen, Forrest City, Pulpit Evangelism instructor, Rev. J. Ralph Clayton, McGehee, Visitation Evangelism instructor, and Rev. John McCormack, Jonesboro, inspirational speaker, each in turn handled helpfully his assignment.

It seemed to be unusually evident as the program developed during the week that the marvelous spirit present from the start had been quickened by the unusual results being obtained throughout the mission. Results announced just before the adjournment Thursday of Wednesday night's program showed 1906 visitors making 2788 interviews recorded 457 first decisions for Christ and 492 transfers of membership, with an attendance of 21,968 persons in the services of worship.

On Thursday evening at The Methodist Church, Jennings, Rev. Robert Critchlow pastor, the visitation instruction was concerned primarily with the program of continuation of evangelistic visiting. Rev. Jeff Davis, Little Rock, was the

visiting minister at Jennings and this church, though comparatively small in numbers, had been having a great experience under the leadership of Brother Critchlow and Brother Davis. The lay visitors expressed their desire for an organized program of visiting for decisions as a permanent feature of the regular church program.

Brother Davis brought his evening message "Confirming Our Inheritance" to a congregation that comfortably filled the sanctuary of the three year old Educational Building which is serving temporarily as a place of worship. A new sanctuary is to be constructed shortly adjoining the Educational Building. It was interesting to note the large percentage of family groups in the service. Until that Thursday evening more than 20 commitments had been made in homes of prospects and in the worship services, with 9 of these persons having already been received into church membership during the services.

Baton Rouge District

The Baton Rouge District, Rev. Edward W. Harris, District Superintendent, met for its last period of instruction and fellowship on Friday. As these host and guest pastors gathered for this final session there was an atmosphere of victory prompted by the large numbers of persons already reached for Christ and His Church. However, there was an even greater air of expectancy for the last services to

(Continued on page 15)

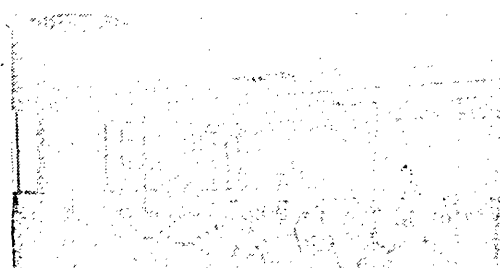
Upper, right: Leaders in the Shreveport District look over the District tally board of the results to date. Persons in pictures include Dr. J. Henry Bowden, Shreveport District Superintendent, who is pointing, and Rev. Rufus Sorrells, Little Rock, Instructor in Pulpit Evangelism, Dr. Joe Z. Tower, Longview District Superintendent, who delivered Inspirational Address Monday, December 3; and Rev. Paul Bumpers, Marked Tree, Visitation Evangelism Instructor. Dr. Tower substituted on Monday for Rev. J. Kenneth Shamblin, Little Rock, called home for a funeral.

Center, right: Monroe District Luncheon which followed the District School of Evangelism. The group had its lunch each day at the First Methodist Church, Monroe, Dr. A. M. Serex, host pastor.

Lower, right: Leaders of the Monroe District U.E.M. program; left to right: Rev. R. H. Staples, Louisiana Conference Director of Evangelism; Rev. Horace Lewis, Pulpit Evangelism Instructor; Rev. W. H. Giles, District Superintendent; Dr. W. Henry Goodloe, Inspirational Speaker; and Rev. G. Albert Gatlin, Visitation Evangelism Instructor, who substituted for Rev. Mark Vaught, called to his home, Stuttgart, for a funeral.

Left: Rev. Cecil R. Culver giving Visitation Instruction at the Pineville Methodist Church. Brother Culver also served as Executive Chairman for the Area program.

Right: Leaders in the Ruston District U.E.M. program. Rev. George W. Pomeroy, Ruston District Superintendent, greets Rev. J. William Watson, pastor of First Methodist Church, North Little Rock, who was inspirational speaker at District School of Evangelism and Youth Night Speaker; and Rev. Elmer J. Holifield, First Methodist Church, Helena, who was Ruston District instructor in Pulpit Evangelism. Rev. Arthur Terry, Asbury Methodist Church, Little Rock and Instructor in Visitation Evangelism, was not present when picture was made.



The Arkansas Methodist

An Official Publication of
The Arkansas-Louisiana Episcopal Area

PUBLISHED EVERY THURSDAY
Except the Weeks of July 4 and December 25

SUBSCRIPTION PRICE, \$1.50 PER ANNUM
Retired Ministers and Wives of Deceased Ministers
of the Little Rock and North Arkansas Conference
Complimentary

Office of Publication, 1136-1137 Donaghey Building
LITTLE ROCK, ARKANSAS

E. T. WAYLAND Editors and Business Managers
EWING T. WAYLAND
ANNIE WINBURNE Assistant to Editors
CONTRIBUTING EDITORS H. O. Bollin Forney Hutchinson
Roy I. Bagley Mrs. Ewing T. Wayland

OWNED, MANAGED AND PUBLISHED BY THE
METHODIST CHURCHES OF
ARKANSAS AND LOUISIANA

COMMISSIONERS:
Little Rock Conference—J. S. M. Cannon, Charles W. Richards, C. C. Landers, Fred W. Schwendimann, Arthur Terry, Aubrey G. Walton, Burney Wilson.
Louisiana Conference—To be named June, 1952.
North Arkansas Conference—John Bayliss, W. Glenn Bruner, J. G. Moore, Joe Pierce, I. L. Claud, R. J. Rice, J. W. Workman.

Entered as second-class matter, January 31, 1908,
at the Post Office at Little Rock, Ark., under the Act
of Congress of March 3, 1879.

When asking for change of address, please include
charge key number, former address, new address and
name of pastor.

Articles other than editorials do not necessarily reflect
the opinions of the editors of the Arkansas Methodist.



A WEEKLY MESSAGE

By FORNEY HUTCHINSON

MY FIRST VISIT TO TULSA

During my fourteen years as pastor of St. Luke's Church in Oklahoma City I had a fine young friend by the name of Clay Doss. He was one of my stewards, taught the Young Men's Class of the Sunday School, and was universally beloved by all who knew him. One day he told me he was soon to be married to a Tulsa girl and wanted me to go with him and perform the marriage ceremony. I recognized his bride-to-be as a member of a prominent Little Rock family. They were staunch Republicans and stood high in the ranks of that great political party. At the appointed time he came and under very agreeable and attractive surroundings the marriage ceremony was consummated.

The young woman was not a Methodist, but when they had established their home in Oklahoma City, she joined our church with her husband. In due time a handsome baby boy was born to their union. Not long afterwards, Mr. Doss came to my office and told me he was being transferred by his company to a city farther north. I assured him of my love and best wishes and urged him to come to see me when his business brought him to Oklahoma City.

In course of time I was transferred to Boston Avenue Church in Tulsa, and Mr. Doss had changed his business connections, becoming an executive of a large corporation with headquarters in an Eastern city. From time to time I heard from him, and occasionally he would come to see me. The last time I saw him was when he visited us in Shawnee a few years ago.

In the meantime, the baby boy of whom I have spoken had grown up, a fine Christian lad, outstanding in his school and college work. His thoughts were turning toward the ministry, or some other form of Christian work, and he was making preparation to that end in a college in California. While home on a Christmas vacation a few years ago, he met a tragic death in an automobile accident not far from his father's home. The parents were heartbroken, for all their thoughts and plans for the future were wrapped up in this fine son.

Recently I had a letter from Mr. Doss saying he was planning to come to Tulsa for a visit in the near future and wished to go to church with me. In my thinking Tulsa and the Doss family are vitally connected. May God bless them as they move toward a reunion with their boy in the Land that knows no separation!

The thinnest thing in the world is flattery—
and the hardest thing to see through.—Lake Mills
(la.) Graphic

NEWS AND NOTES ABOUT FACTS AND FOLKS

MRS. H. B. ALLIS has been named teacher of the Blakeney Class of the First Methodist Church, Little Rock.

THE "Life of Jesus" Christmas parade sponsored by the churches of Greater Little Rock will be held on Saturday afternoon, December 15, beginning at 3:45.

BORN to Chaplain and Mrs. Alvin C. Murray, a son, Sam Wesley, at the Army and Navy Hospital in Hot Springs on December 4. Chaplain Murray is on duty in Korea.

REV. A. N. STOREY, district superintendent of the Paragould District, was the speaker at the meeting of the Lions' Club in Alexandria, La., at their recent meeting.

THE INTERMEDIATE DEPARTMENT of the Central Methodist Church, Fayetteville, held Open House on December 9, from 3:00 to 4:00 in Wesley Hall. A Christmas program was given and refreshments served.

THE MARY-MARTHA BIBLE CLASS of the Methodist Church of Smackover held its annual Christmas party on Friday, December 14, at the home of Mrs. W. W. Smedley. Mrs. George Stevens is president of the class.

REV. KENNETH SHAMBLIN, pastor of Pulaski Heights Methodist Church, Little Rock, will be the speaker for Religious Emphasis Week at Henderson State Teachers College, February 11-14. The four-day program will be sponsored by the campus Student Christian Association.

V. EARL COPES, minister of music at Pulaski Heights Methodist Church, Little Rock, will give an organ recital on Sunday evening, December 15, at the church. Immediately following the recital, Mr. and Mrs. Copes will be honored by the church with a reception in the dining room.

A delegation of men from the Methodist Men's Club of the Mena Church were guests at a dinner meeting with the men of the DeQueen Church on Monday, November 26. The men from Mena are assisting the men from the DeQueen Church in organizing a Methodist Men's Club.

THE WESLEY FOUNDATION at Fayetteville is holding a series of caroling parties on Sunday night following the evening church service. Caroling sessions were held on December 9, December 16 and another session will be held on December 23.

ATTORNEY JAMES E. McDANIEL of Jonesboro spoke at the Sunday evening service on December 3 at the church at Nettleton in the absence of the pastor, Rev. Clyde Crozier. Mr. Jewel C. Robbs, president of the Methodist Men's Club was in charge of the service.

THE PERRYVILLE METHODIST CHURCH has added three new classrooms for the Children's Department in the small building adjoining the new church. Teachers in the Children's Department are: Mrs. Carl Adams, Beginner; Mrs. H. E. Van Dalsem, Primary and Mrs. A. A. Tarvin, Junior.

THE NORTHWEST ARKANSAS TIMES, Fayetteville, is opening its columns for an editorial each Saturday from members of the Ministerial Alliance of Fayetteville. Rev. William F. Cooley, Fayetteville District superintendent, wrote the editorial in the issue of December 1 on the subject "The Church in Our Day".

GROUND-BREAKING ceremonies for the new Methodist Church in City Heights, Van Buren, were held at 9:00 o'clock on Monday morning, November 26. Marvin Davenport, who with Mrs. Davenport, donated the lot for the church, turned the first shovelful of dirt. Dr. Henry Goodloe, Ft. Smith District superintendent, led in prayer. Rev. Felix Holland is pastor.

DR. WILLIAM G. POLLARD, founder and executive director of the Oak Ridge Institute of Nuclear Studies, will be the keynote speaker during Religious Emphasis Week at the Univer-

sity of Arkansas, it has been announced by Harold Doorenbos, president of the Student Christian council, sponsor of Religious Emphasis Week. Several ministers from various parts of Arkansas will be on the University campus the week to conduct seminars and lead the classroom and house discussions. Dr. Pollard is a physicist who is studying for the Episcopal ministry. Religious Emphasis Week will be held sometime in March.

MRS. HERBERT SMITH of Little Rock passed away in a Little Rock hospital on Tuesday, December 4. Mrs. Smith was a charter member of Pulaski Heights Methodist Church and had served in a number of capacities in the church. The Inez Smith Bible Class was named in her honor and the class further honored Mrs. Smith by placing a window in the new sanctuary. Funeral services were held on Thursday in Pulaski Heights Church by Rev. Kenneth Shamblin, pastor of the church, and Dr. Fred G. Roebuck pastor of the First Methodist Church, Ft. Smith, and former pastor of Pulaski Heights Church. Mrs. Smith is survived by her husband and several nieces.

THE MUSIC DEPARTMENT of Hendrix College, Conway, featured five musical events during the Christmas season. Mildred Palmer of Little Rock opened the season's activities last week with a performance of the Khatchaturian Piano Concerto. Dobbs Franks of Forrest City played the second piano part. George Mulacek, pianist, of the faculty played a recital on Thursday. Music of the season was presented in the last of a series of Sunday vespers last week by V. Earl Copes, organist. Tuesday night the Concert Band presented its annual Christmas concert. Monday night will feature caroling excursions. Formal activities preceding the holidays will conclude on Tuesday morning with the Choristers, directed by V. Earl Copes, singing in chapel. The Christmas holidays will begin Wednesday, December 19, at noon. Classes will resume at 8:00 a. m., January 3.

THE PROSPECT METHODIST CHURCH in Bristol, Conn. (the Rev. Lewis H. Davis, minister), has organized a "Methodist Men's Club" which has some new ideas that other church groups are watching with interest. Once a month there will be a meeting with a "vital program," usually with a speaker of some prominence and possibly with a meal served by the women of the church. Then each member of the club will be entitled to join two out of some six or eight "interest groups" sponsored and promoted by the entire club. Already there have been organized a "Cracker-Barrel Discussion Group" meeting once a month (on a night other than the entire club meeting evening) to discuss local and national problems, conduct debates, town-meetings, etc.; a "Photography Group" with classes, laboratory work, etc.; a "Carpentry Group" which it is hoped will do repair work in the church, etc.; a "Sick-Visiting Group" to visit the hospitals and ill members of the church; a "Musical Group" which may develop a chorus or orchestra, or both; and several other groups not as yet formed and depending on the interests of the men as revealed by a questionnaire.

AREA "UNIT A" IN GREAT VICTORY

(Continued from page 1)

niques will prove helpful on out in an undetermined future. Influences set in motion will long continue to work for good. The members of local churches attending services were helped. Who can record all the beneficial good that has been brought to pass, and to God Himself must go the praise for what He has wrought in our midst.

But the story is only half told. The second half of the victory awaits the period January 18-27, when Unit B of the Area will have its Period of Operation. If the same determining factors listed above characterize the Unit B program, then the victory will be largely won.



THE CHILDREN'S PAGE

ANNIE WINBURNE, Editor



IN STORYLAND

LONG AGO AT CHRISTMAS

Once upon a time, and it was a long time ago, when there were no aeroplanes or buses or trains, people rode on camels and donkeys when they went visiting, and sometimes, if they didn't own a camel or a donkey, they would walk great distances.

And in that long time ago, children never heard of Christmas trees and presents or Santa and his reindeer, because there was no Christmas.

But in that long ago, Christmas did come. Something happened one dark night when the little children who lived in Bethany and Bethlehem were sound asleep.

In the morning, when it was still very dark, the children were awakened by loud talking in the street and inside their homes. Everybody was up out of bed. There was a great deal of excitement everywhere. The shepherds had driven down the grassy hillsides, and although some were in the sheep-folds many were still in the street, and nobody seemed to be caring where they were or what they were doing.

It was all very strange. The children, in their night clothes, joined their parents, and nobody seemed to mind a bit that they weren't asleep in their beds.

The children listened but they could not understand. Fathers were telling mothers something about a star, a big star that shone so brightly that they were almost blinded by its light, and they threw themselves to the ground and covered their eyes with their hands. Then they heard angels singing. The children felt sure it must have been very frightening or their fathers would never have been afraid. Yet now they were saying something about a King—a tiny Baby.

Some of the shepherds had left their sheep during the night and had gone to see the Baby. Now the other shepherds were going to go, and were leaving the sheep in the care of the older boys of the village.

None of the children was able to understand it. Nothing like this had ever happened before. Many of the boys who had coaxed and coaxed their parents to let them help care for the sheep had never been allowed to do it, yet now the men were leaving them alone with the sheep and were going away to see a new King.

Days passed, and still the children did not understand what had happened. And now all the mothers seemed as excited as their fathers had been. And they were all so busy!

Ana's mother was polishing all the pretty shells she had gathered when they vacationed along the shores of the Sea of Galilee.

David's mother hunted up little round stones and put them inside a gourd. She fastened up the hole through which she had dropped the pebbles and then began polishing the gourd until it shone as bright as a mirror.

Other mothers were weaving



CHILDREN EVERYWHERE

*Christmas is not far away,
It is such a happy day.*

*Little folks all love it so
As their eyes with wonder glow.*

*Day we honor Jesus' birth,
Singing "Peace, goodwill on earth".*

*May the children everywhere
Know His tender, loving care.*

—A.E.W.

blankets, cleaning the feathers of some pretty white doves, and making garlands. Everybody was busy doing so many different things.

They told the children that when their fathers came back all the mothers were going to see the tiny Baby, who would some day be their King, and all the presents they were making were for the new little Baby, but they didn't know His name or where He lived, and they would not know until the fathers returned.

And before too many days passed, their fathers did come back. They said they had seen the Baby lying in a manger in the little town of Bethlehem. Mary was the mother's name, and she had called her Baby, Jesus. They said that as Jesus lay in His little manger bed a strange, bright light seemed to be around his little head until the whole room was lighted up. "You must go! You must go and see Him at once," the fathers urged.

So everything that was started was finished, and the presents looked very beautiful. The children were sure the Baby would like the surprises their mothers had for Him.

Finally everything was ready and all the mothers started off on their donkeys with the bags of lunches and all the presents—doves, baby lambs, blankets, beads, and all.

There were good-bye kisses! There was much calling and waving, and then all was quiet.

The fathers were all on the hillsides with their sheep. The mothers and many grandmothers were on

their way to Bethlehem.

But the next day the grandmothers who remained began to make plans for the mothers when they returned from Bethlehem. And, of course, the children had to help. There was corn to grind into flour. The houses had to be cleaned and decorated. There was baking to be done, and all kinds of surprises to make. And almost before they knew it, it was time for their mothers to return home again.

What fun they had then! First they heard all about the Baby Jesus. Mary and Joseph had gone to Bethlehem to pay their taxes. When they arrived in Bethlehem, there was no room for them at the Inn, so they had to spend the night in the stable where the oxen and sheep were sleeping. They made a bed on the hay and that night Baby Jesus was born and Mary made a bed for her Baby in a manger. Mary and Joseph were so happy with their Baby. They didn't mind being in the stable, and they were simply delighted to have people come and see Him, and, of course, appreciated all the beautiful gifts.

After the mothers had told the children about the Baby, everybody went to their own homes. The fathers soon returned from the hillsides. The surprises the children had made were opened. A very special dinner was prepared and eaten, and everybody went to bed early, tired and happy. And that was really the very first Christmas season.

We usually have busy, exciting happy Christmas Days, but so often

IN THE WORLD OF BOYS AND GIRLS

WHEN SANTA CAME

"Churrup!" said Santa Claus.

The reindeer sprang forward. Over the snow the sleigh skimmed until it came to a halt on the roof of a large farmhouse. Out jumped Santa Claus.

"What's that?" asked the leading reindeer, staring at a mound of snow.

"It looks like a very small house," said the next reindeer, "but I can't see a chimney."

"Churrup!" said Santa Claus again, as he scrambled into the sleigh, and away they went for miles and miles.

It was nearly morning. There was almost nothing left on the sleigh. Down the last chimney Santa Claus scrambled. Getting back into the sleigh his foot touched something.

"What's this?" he said, stooping and picking up a small sack. "Don't tell me I have forgotten someone?"

"Santa," said the reindeer, "we thought we saw a tiny house not far from the big farmhouse where we first stopped."

"We must go back at once," said Santa Claus, "but it will be past chimney time. You must drive up to the door."

In that little house with the chimney Santa forgot, two children had gone happily to bed. Charles and Christine had hung up their stockings and Grandmother had promised Santa Claus would come while they were asleep.

It was still quite dark when they got up and ran across to their stockings. They were empty.

"Perhaps," said Charles sadly, "the chimney was too small and Santa Claus could not see it. Listen!" he went on. There was a voice outside calling: "Charles! Christine!"

They hurried to the door and ran out. There was Santa and his sleigh.

"What about those stockings?" he said cheerily, and walked in. Out of his sack came presents for both.

"Now," said Santa, "into bed and go to sleep."

Their grandmother woke them. "See what Santa has brought you," she said.

"We know," they answered. "He came to the door with his reindeer."

"How wonderful!" said grandmother, and she smiled.—Children's Newspaper.

JUST FOR FUN

"Johnny," said his mother severely, "someone has taken a big piece of ginger cake out of the pantry."

Johnny blushed guiltily and fidgeted around.

"Oh, Johnny," she exclaimed, "I didn't think it was in you!"

"It ain't all," replied Johnny, "part of it's in Elsie."

We forget about Jesus, and we really should not because without Him we would never have a Christmas.—The United Church Observer.

North Arkansas Conference Treasurer's Report

JUNE 18, 1951, TO DECEMBER 2, 1951

| | World Service and Con. Ben. | Bishops Fund | Conference Claimants | D. S. Salary | Gen. & Jurisd. Administration | Minim. Salary Fund | World Communion | Advance for Christ |
|---|-----------------------------|--------------|----------------------|--------------|-------------------------------|--------------------|-----------------|--------------------|
| BATESVILLE DISTRICT | | | | | | | | |
| BATESVILLE, First | 1500.00 | 43.80 | 375.00 | 276.00 | 42.50 | 73.50 | 100.00 | |
| Central Ave. | 450.00 | 34.98 | 300.00 | 219.96 | 34.98 | 48.00 | 25.00 | 300.00 |
| BETHESDA | 25.00 | | 25.00 | 10.00 | | | | |
| Cushman | 50.00 | | 45.00 | 45.00 | | | | |
| CALICO ROCK | | | | | | | 14.00 | |
| CAVE CITY | 133.00 | 21.00 | 180.00 | 132.00 | 16.00 | 16.00 | 8.00 | |
| Sidney | 16.00 | 3.50 | 30.00 | 22.00 | 2.50 | 3.50 | 10.00 | |
| Palestine | 10.00 | | 10.50 | | | | | |
| CAVE CITY CT., Grange | 20.00 | 8.75 | 20.00 | 16.25 | 5.00 | | | |
| CHARLOTTE CT. | | | | | | | | |
| Cave Creek | 15.00 | 2.79 | 24.50 | 18.15 | 3.00 | | | |
| Oak Ridge | | 1.35 | 13.65 | | | | | |
| Sharpe | 3.00 | | 11.00 | 11.00 | | | | |
| Walnut Grove | 3.50 | 1.75 | 15.00 | 11.00 | | | | |
| COTTER | 150.00 | 21.00 | 130.00 | 132.00 | 26.00 | | 31.35 | |
| DESHA CT., McIlue | 10.00 | 3.00 | 15.00 | 12.00 | 2.00 | | | |
| Jamestown | 11.00 | 1.75 | 4.00 | 2.25 | 2.00 | | | |
| Salado | 15.00 | 2.18 | 18.75 | 13.75 | 1.50 | | | |
| EVENING SHADE | 13.00 | 6.00 | 50.00 | 27.00 | 4.00 | | | |
| Ash Flat | 25.00 | 2.00 | 27.00 | 22.00 | 2.00 | | | |
| Bear Creek | 3.00 | 1.00 | 5.00 | 4.00 | 1.00 | | | |
| Liberty Hill | 9.00 | 1.10 | 9.37 | 6.87 | 1.50 | | | |
| MELBOURNE | | | 35.00 | 27.50 | | 1.50 | 14.67 | |
| Forrest Chapel | 17.50 | 1.26 | 10.50 | 8.26 | 1.00 | | | |
| Franklin | 5.00 | 1.00 | 6.00 | 5.50 | 2.00 | | | |
| Guion | 5.00 | | 10.00 | 11.00 | | | 9.30 | |
| New Hope | 5.00 | | 14.00 | 11.00 | | | | |
| Oxford | | 4.20 | 26.40 | 4.00 | 5.00 | 5.00 | 12.20 | |
| Wiseman | 10.00 | 6.73 | 15.00 | 15.00 | 4.00 | 5.00 | 18.51 | |
| MOOREFIELD | 92.50 | 5.25 | 45.00 | 33.00 | 3.75 | | | |
| Asbury | 50.00 | | | | | | | |
| Sulphur Rock | 5.00 | .83 | 7.00 | 5.50 | | | | |
| MTN. HOME PARISH | | | | | | | | |
| Arkana | 2.50 | 1.75 | 7.50 | 6.00 | 1.00 | | | |
| Fairview | 5.00 | 2.18 | 9.00 | 7.00 | 1.50 | | | |
| Gassville | 55.00 | 7.00 | 60.00 | 44.00 | 7.00 | 1.40 | | |
| Midway | 2.50 | 1.31 | 6.00 | 5.00 | 1.50 | | | |
| Salesville | 5.00 | 1.31 | 6.25 | 4.25 | 1.50 | | | |
| Wesley Chapel | 5.00 | 1.75 | 7.50 | 5.50 | 1.50 | | | |
| MOUNTAIN VIEW | 67.50 | 16.00 | 136.00 | 100.00 | 16.00 | | | |
| St. James | 2.50 | 1.00 | 3.75 | 2.75 | 1.00 | | | |
| NEWARK | 76.00 | 18.00 | 150.00 | 110.00 | 18.00 | 18.00 | 25.00 | |
| NEWPORT, First | 750.00 | 52.50 | 450.00 | 330.00 | 50.00 | 91.00 | 70.00 | |
| Umstead | 75.00 | 15.00 | 127.50 | 93.50 | 3.50 | 9.00 | | |
| Oil Trough | 10.00 | | 11.00 | 10.00 | | | | |
| PLEASANT PLAINS | 12.50 | 2.18 | 18.75 | 13.75 | 1.00 | | | |
| Cedar Grove | 12.50 | 2.18 | 18.75 | 13.75 | 1.00 | | | |
| Corner Stone | 12.50 | 2.18 | 18.75 | 13.75 | 1.00 | | | |
| Oak Grove | 12.50 | 8.70 | 18.15 | 13.75 | 4.00 | | | |
| SALEM | 95.00 | 31.50 | 135.00 | 93.50 | 26.00 | | | |
| Camp | 15.00 | | | 8.25 | | | | |
| Mt. Pleasant | | | | 8.25 | | | | |
| SWIFTON | 87.00 | 30.10 | 158.00 | 100.00 | 23.00 | | | |
| Alicia | 75.00 | 7.81 | 71.25 | 52.25 | 6.50 | 11.25 | | |
| Stranger's Home | 15.00 | 8.40 | 46.00 | 36.40 | 3.00 | 11.40 | | |
| TUCKERMAN | 10.00 | 10.00 | 25.00 | 50.00 | 10.00 | | | |
| VIOLA | 12.60 | | | 1.50 | 1.55 | 2.50 | 7.50 | |
| Bexar | 15.00 | 1.50 | 16.00 | 15.00 | | | 6.75 | |
| WELDON | 55.00 | 8.20 | 66.00 | 49.60 | 8.50 | | 8.00 | |
| Tupelo | | | 70.00 | | | | 10.00 | |
| YELLVILLE | | | | 7.75 | | | | |
| Bull Shoals | 15.00 | | 5.00 | | | | | |
| Cedar Grove | 15.00 | | | | | | | |
| TOTAL | \$4177.10 | 405.82 | 3165.42 | 2324.89 | 345.78 | 297.05 | 370.28 | 300.00 |
| METHODIST YOUTH: Batesville First, \$25.00; Arkana, \$1.45; Newport First, \$11.33; Swifton, \$3.00. | | | | | | | | |
| KANSAS FLOOD RELIEF: Batesville Central, \$25.00; Melbourne, \$5.00; Forrest Chapel, \$5.00; New Hope, \$6.00; Oxford, \$5.00; Wiseman, \$8.00. | | | | | | | | |
| CONWAY DISTRICT | | | | | | | | |
| DISTRICT SUP'T | | | | | | 60.00 | | 15.96 |
| ATKINS | | | | 132.00 | | | | |
| BEACON | 7.50 | 2.00 | 36.00 | 23.50 | 1.00 | | | |
| BELLEVILLE | 24.00 | 5.00 | 45.00 | 33.00 | 6.00 | 4.00 | 5.00 | |
| Havana | 24.00 | 5.00 | 45.00 | 33.00 | 6.00 | 6.00 | | |
| Corinth | 3.00 | | 2.00 | | | | | |
| BETHEL | 21.35 | 2.25 | 18.75 | 13.75 | 2.50 | | | |
| Cato | | | | | | | 9.00 | |
| CONWAY, First | 1323.00 | 43.60 | 375.00 | 276.00 | 50.00 | 73.50 | 157.71 | 600.00 |
| Wesley Memorial | 75.00 | 18.00 | 132.50 | 99.00 | 18.00 | 15.00 | 75.00 | |
| DANVILLE | 276.00 | 49.00 | 210.00 | 154.00 | 56.00 | 80.00 | | |
| DARDANELLE | 259.00 | 27.50 | 236.00 | 173.00 | 25.00 | 35.00 | 25.00 | |
| DARDANELLE CT. | | | | | | | | |
| Liberty Hall | 7.00 | 2.00 | 11.00 | 8.00 | 1.00 | | | |
| Oak Grove | 7.00 | 1.00 | 13.00 | 10.00 | 2.00 | | | |
| Mt. Pisgah | 10.00 | 3.00 | 29.00 | 22.00 | 4.00 | | | |
| DOVER | 50.00 | 17.50 | 59.00 | 35.00 | 20.00 | 12.00 | | |
| London | | 14.00 | | 8.00 | 6.00 | | | |
| GRAVELLY CT., Bluffton | 60.00 | 5.00 | 49.00 | 36.00 | 6.00 | 4.00 | | |
| GREENBRIER | 20.00 | 7.00 | 50.00 | 33.00 | | | | |
| Centerville | 20.00 | 3.50 | 30.00 | 22.00 | 4.00 | 1.50 | | |
| Republican | 15.00 | 1.00 | 7.00 | 5.50 | 1.50 | | 6.50 | |
| MORRILTON, First | 340.00 | 22.00 | 187.00 | 137.00 | 25.00 | 63.00 | 51.00 | 65.00 |
| MORRILTON CT. No. 2 | | | | | | | | |
| Lanty | 33.00 | 3.00 | 26.25 | 19.00 | 1.00 | 2.00 | | |
| Hill Creek | | .50 | 5.50 | 4.00 | 1.00 | | 5.00 | |
| Springfield | 7.00 | 2.00 | 10.00 | 8.00 | 1.00 | | | |
| Mayflower | | 4.00 | 19.00 | 28.00 | 5.00 | | | |
| NAYLOR CT., Oakland | 20.00 | | 4.50 | | | | | |
| Bethlehem | 1.75 | .50 | 4.25 | 3.50 | .50 | | | |
| Mt. Vernon | 13.00 | 5.00 | 20.00 | 15.00 | 7.00 | | | |
| NORTH LITTLE ROCK, 1st | 1416.65 | 43.75 | 375.00 | 276.00 | 50.00 | 150.00 | 555.55 | |
| Gardner Memorial | 678.48 | 42.74 | 375.00 | 274.56 | 27.42 | 123.50 | 300.00 | |
| Levy | 110.00 | 15.75 | 135.00 | 99.00 | 18.00 | 21.00 | 25.00 | |
| Sylvan Hills | 75.00 | 14.44 | 121.00 | 91.00 | 13.00 | 12.50 | 13.00 | 100.00 |
| Washington Ave. | 500.00 | 34.12 | 273.00 | 214.50 | 39.00 | 46.50 | 59.28 | |
| OLA | 75.00 | | 50.00 | 25.00 | | | 7.05 | |
| Centerville | | 4.00 | 33.00 | | 5.00 | 2.00 | | |
| Birta | 8.00 | 2.00 | 15.00 | 11.00 | 2.00 | | | |
| OPPELO | 40.00 | 6.00 | 72.00 | 52.00 | 10.00 | 2.00 | 10.25 | |
| PERRY | 36.00 | 2.50 | 50.00 | 22.00 | 4.00 | 3.75 | | |
| Perryville | 30.00 | 25.00 | 30.00 | 20.00 | | 25.00 | | |
| PERRY CO. CT., Houston | 5.00 | 1.50 | 14.00 | 11.00 | 1.00 | | | |
| Casa | | | 10.00 | | | | | |
| PLAINVIEW | 25.00 | 4.50 | 55.25 | 41.25 | 7.50 | 2.50 | 25.00 | |
| Nimrod | | .50 | 4.50 | | .50 | | | |
| PLUMERVILLE | 44.00 | 10.00 | 60.00 | 65.00 | 12.00 | 6.00 | 12.00 | 40.00 |
| POPE CO. CT., St. Paul | 10.00 | 1.25 | 14.00 | 12.00 | 1.25 | | | |
| Center Valley | 10.00 | 1.25 | 14.00 | 12.00 | 1.25 | | | |
| POTTSVILLE | 84.00 | 16.00 | 123.00 | 110.00 | 15.00 | 12.00 | | |
| Bell's Chapel | 17.00 | 2.00 | 15.00 | 11.00 | 2.00 | 2.00 | 11.00 | |
| RUSSELLVILLE | 1350.00 | 47.26 | 445.00 | 337.00 | 54.00 | 80.50 | 50.00 | 350.00 |
| SALEM | 20.00 | 4.00 | 33.00 | 23.00 | 4.00 | 2.00 | | |
| VILONIA | 14.00 | 26.00 | 88.00 | 16.00 | | 6.00 | 40.00 | |
| VILONIA CT., Mt. Carmel | 10.00 | 1.50 | 15.00 | 11.00 | 2.00 | | | |
| FAYETTEVILLE DISTRICT | | | | | | | | |
| Cypress Valley | 10.00 | 1.50 | 14.00 | 11.00 | 2.00 | | | |
| Mt. Olive | 2.50 | .50 | 3.50 | 2.50 | .50 | | | |
| TOTAL | \$7184.23 | 549.06 | 3989.00 | 3136.78 | 539.23 | 854.75 | 463.13 | 2168.05 |
| GOLDEN CROSS: Washington Ave., \$12.50. | | | | | | | | |
| METHODIST YOUTH: Dist. Intermediates, \$37.30; Conway First, \$26.62; Wesley Memorial, \$9.25; Greenbrier, \$1.00; Morrilton, \$9.00; Gardner Memorial, \$8.00; Levy, | | | | | | | | |

| | World Service and Con. Ben. | Bishops Fund | Conference Claimants | D. S. Salary | Gen. & Jurisd. Administration | Min. Salary Fund | World Comm. Union | Adv. for Christ |
|---|-----------------------------|--------------|----------------------|--------------|-------------------------------|------------------|-------------------|-----------------|
| WYNNE | 600.00 | | 337.00 | 247.60 | 75.00 | | 50.00 | 300.00 |
| TOTAL | \$600.00 | 740.33 | \$793.90 | \$271.21 | \$47.25 | \$257.75 | \$15.25 | \$1777.75 |
| GOLDEN CROSS: Marvell, \$10.00; Turner, \$5.00; West Helena, \$10.00. | | | | | | | | |
| METHODIST YOUTH: Cotton Plant, \$2.00; Blackish Lake, \$6.52; Earle, \$26.00; Forrest City, \$10.00; Helena, \$1.00; Marvell, \$10.00; West Helena, \$10.00; West Memphis, \$26.00; Wheatley, \$12.35; Round Pond, \$1.50; Wynne, \$10.00. | | | | | | | | |
| RACE RELATIONS: Holly Grove, \$10.00; Marvell, \$7.00. | | | | | | | | |
| WESLEY FOUNDATION: Marvell, \$25.00. | | | | | | | | |
| KANSAS FLOOD RELIEF: Aubrey, \$5.00; Brantley, \$34.73; Chardon, \$32.17; Colt, \$16.00; Wesley Chapel, \$6.00; Cotton Plant, \$12.50; Crawfordville, \$10.00; Blackish Lake, \$5.00; Elmore, \$26.00; Forrest City, \$175.00; Haynes, \$3.00; Helena, \$100.00; Holly Grove, \$24.00; Marianna, \$34.00; Marion, \$56.10; Parkin, \$100.00; West Helena, \$19.30; West Memphis, \$148.91; Wheatley, \$7.50; Widener-Round Pond-Madison, \$31.25; Wynne, \$50.00. | | | | | | | | |

FORT SMITH DISTRICT

| | | | | | | | | |
|-------------------|------------|---------|---------|---------|--------|--------|--------|---------|
| ALIX | 12.50 | 5.25 | 15.00 | 33.00 | 4.40 | | | |
| Coal Hill | 37.00 | 10.50 | 66.00 | 6.00 | 2.40 | | | |
| ALMA | 107.50 | 17.50 | 150.00 | 110.00 | 21.00 | 43.00 | | |
| Mountain View | 12.50 | 4.37 | 37.50 | 27.50 | 2.25 | 5.50 | | |
| Newberry | 9.00 | 4.00 | 7.00 | 2.00 | | | | |
| ALTUS | 22.50 | 3.15 | 25.20 | 19.50 | 4.00 | 5.00 | | |
| Gar Creek | 20.00 | 10.00 | 7.00 | 3.10 | | | | |
| Grenada's Chapel | 15.00 | | 15.00 | | | | | |
| BOONEVILLE | 475.00 | 31.50 | 232.00 | 193.00 | 33.00 | 70.00 | 35.00 | |
| Cole's Chapel | 32.50 | 3.24 | 33.76 | 24.76 | 6.00 | 5.72 | 5.00 | |
| BRANCH | 113.00 | 14.00 | 41.00 | 12.00 | | 3.00 | | |
| Low's Creek | 9.00 | 2.62 | 5.25 | 4.00 | 4.40 | | | |
| Cecil | 20.00 | 1.31 | 10.50 | 8.25 | 2.20 | | | |
| CHARLESTON | 62.50 | 13.13 | 112.50 | 82.50 | 11.25 | 13.75 | 25.00 | 31.25 |
| CLARKSVILLE | 900.00 | 43.74 | 375.00 | 274.93 | 45.00 | 75.50 | 60.00 | |
| FORT SMITH, First | 2300.00 | 131.25 | 1125.00 | 637.50 | 159.73 | 231.50 | 500.00 | |
| Goddard Memorial | 875.00 | 40.00 | 236.25 | 234.25 | 49.20 | 71.45 | 70.70 | 30.00 |
| Fifth Street | | 21.00 | | 69.00 | | | | |
| Grand Avenue | 180.00 | 23.62 | 202.50 | 148.50 | 24.00 | | | |
| Massard | 30.00 | 17.50 | 130.00 | 110.00 | 12.00 | 15.00 | 7.76 | 12.50 |
| Barling | 25.00 | 3.50 | 29.25 | 21.50 | 2.75 | | | |
| Midland Heights | 675.00 | | 525.00 | 429.00 | | | | |
| St. Luke | 125.00 | 8.75 | 75.00 | 55.00 | 9.75 | 8.75 | 10.00 | 50.00 |
| Bonanza | 17.50 | 7.50 | 40.00 | 41.00 | 6.00 | 3.75 | 9.05 | |
| St. Pauls | 275.00 | 63.00 | 270.00 | 193.00 | | | 150.00 | |
| Townson Avenue | 16.00 | 8.40 | 39.00 | 29.70 | 5.00 | | 5.00 | |
| GREENWOOD | 100.00 | 47.25 | 105.00 | 71.25 | 43.00 | 47.50 | 38.00 | |
| HACKETT | 5.00 | 4.00 | 24.00 | 16.00 | 4.00 | 3.00 | | |
| Bethel | 10.00 | 2.00 | 8.00 | 6.00 | 3.00 | | 11.00 | |
| HARTFORD | 109.00 | 32.00 | 135.00 | 99.00 | 21.00 | 20.00 | 22.00 | |
| Midland | | 7.00 | 27.00 | | 3.00 | 4.00 | | |
| HARTMAN | 40.00 | 7.94 | 63.07 | 49.91 | 6.00 | | | |
| Hay's Chapel | 15.00 | 3.54 | 13.34 | 10.50 | 3.00 | | 5.00 | |
| Mt. Zion | 25.00 | | | | | | | |
| Spadra | 31.00 | | 30.76 | 21.50 | | | | |
| HUNTINGTON | 35.00 | 26.25 | 112.50 | 82.50 | 26.00 | | | |
| KIBLER | 45.00 | 7.00 | 55.00 | 41.00 | 11.00 | 10.00 | | |
| New Hope | 65.00 | 21.00 | 99.00 | 70.00 | 15.00 | 15.00 | 2.30 | |
| Dyer | 15.50 | 3.56 | 30.00 | 22.00 | | 3.00 | 3.00 | |
| LAMAR | 40.00 | 8.71 | 75.00 | 55.00 | 3.50 | | | |
| Mt. Olive | 22.50 | 3.75 | 31.50 | 23.00 | 3.20 | 2.00 | | |
| Madden Chapel | 10.00 | 1.25 | 11.50 | 8.50 | 3.00 | 5.00 | | |
| LAVACA | 25.00 | 5.00 | 33.00 | 23.00 | 4.00 | | | |
| Central City | 10.00 | 4.5 | 7.25 | 5.50 | 1.50 | | | |
| Vesta | | 2.42 | | 15.71 | 1.50 | | | |
| Grand Prairie | 13.75 | 1.52 | 13.13 | 9.52 | 3.00 | | | |
| MAGAZINE | 50.00 | 10.00 | | 50.00 | 4.50 | | | |
| MANSFIELD | 156.16 | 42.00 | 62.00 | 95.00 | 42.30 | | 17.00 | |
| MULBERRY | 54.00 | 8.00 | 62.00 | 50.00 | 5.00 | | | |
| OZARK | 250.00 | 26.50 | 210.00 | 165.00 | 22.00 | | 23.25 | |
| PARIS | 200.00 | 70.00 | 100.00 | 100.00 | 33.00 | 95.00 | 20.20 | |
| PRAIRIE VIEW | 15.00 | 2.00 | 16.00 | 13.07 | 1.65 | .75 | | |
| Scranton | 30.00 | 5.25 | 16.50 | 9.00 | | | 6.46 | |
| Pioneer Memorial | 10.00 | 3.50 | 10.00 | 6.00 | 2.00 | | | |
| New Blaine | 30.00 | 3.50 | 23.00 | 22.00 | 4.25 | 2.30 | | |
| McKendree | | 2.50 | 23.00 | 22.00 | 4.00 | | | |
| VAN BUREN, First | 750.00 | 67.75 | 209.00 | 166.00 | 68.00 | 52.10 | 75.45 | 250.00 |
| CITY HEIGHTS | 50.00 | 10.00 | 50.00 | 37.00 | 6.00 | | | |
| Bethel | 15.50 | 3.50 | 30.00 | 22.00 | 2.00 | .75 | | |
| ST. JOHNS | 50.00 | 43.78 | 33.75 | 33.75 | 15.00 | 42.50 | | |
| WALDRON | 218.50 | 34.73 | 33.00 | 219.00 | 20.50 | 45.00 | | |
| WALDRON CT. | | | | | | | | |
| Square Rock | 67.50 | 3.07 | 47.07 | 41.07 | 2.25 | 1.50 | | |
| Bird View | 6.75 | | 11.37 | 3.94 | | | | |
| TOTAL | \$10002.25 | 1004.16 | 6060.50 | 4723.53 | 651.27 | 953.26 | 453.25 | 1023.75 |

GOLDEN CROSS: Pioneer Memorial, \$5.00; New Blaine, \$5.00; Van Buren First, \$25.00; St. John, \$15.00.

METHODIST YOUTH: Booneville, \$6.00; Branch, \$2.00; St. Pauls, \$13.42; Mt. Olive, \$7.00; Lavaca, \$12.25; New Hope, \$14.75; St. John, \$50.00.

RACE RELATIONS: Ft. Smith First, \$150.00; Prairie View, 75c; Pioneer Memorial, \$2.00; New Blaine, \$2.00; McKendree, \$2.00; Van Buren First, \$25.00; St. John, \$15.00.

STUDENT DAY: Massard, \$10.50.

KANSAS FLOOD RELIEF: Alma, \$25.00; Mountain View, \$5.00; Booneville, \$30.00; Cole's Chapel, \$15.00; Branch, \$3.50; Charleston, \$50.00; Clarksville, \$102.54; Fort Smith First, \$200.00; Goddard Memorial, \$33.31; Grand Ave., \$7.00; St. Pauls, \$15.00; Greenwood, \$15.00; Hartman, \$5.00; Lamar, \$17.33; Mt. Olive, \$13.20; Madden Chapel, \$7.45; Mulberry, \$21.75; Ozark, \$25.00; Paris, \$12.49; Van Buren First, \$34.10; Waldron, \$6.00.

JONESBORO DISTRICT

| | | | | | | | | |
|---------------------|---------|-------|--------|--------|--------|--------|--------|---------|
| BLACK OAK | 25.00 | 16.00 | 59.00 | 135.00 | 11.00 | 5.00 | 25.00 | |
| Delfore | 50.00 | 12.00 | 112.00 | 83.00 | 6.00 | 4.00 | 25.00 | |
| BLITHEVILLE, First | 1549.00 | 99.00 | 420.00 | 330.00 | 135.00 | | 122.76 | 700.00 |
| Lake Street | 100.00 | | 100.00 | 64.00 | | | | |
| West Parish-Gessell | 50.00 | 14.00 | 120.00 | 73.00 | 14.00 | 13.50 | | |
| Half Moon | 25.00 | 7.00 | 60.00 | 44.00 | 7.00 | 5.50 | 9.00 | 8.50 |
| Wesley Memorial | 25.00 | 7.00 | 60.00 | 44.00 | 7.00 | 6.50 | 9.00 | |
| BONO | 25.50 | | 26.50 | 25.50 | | | | |
| Trinity | 20.00 | 3.75 | 20.00 | 25.00 | 18.00 | | 15.00 | |
| Shady Grove | 40.00 | 8.75 | 40.00 | 25.00 | 18.00 | | | |
| BROOKLAND | 58.25 | 10.00 | 50.00 | 25.00 | 12.00 | 9.50 | 40.00 | |
| Pine Log | | | 7.50 | | | | | |
| New Haven | | | | 23.00 | | | | |
| Pleasant Grove | 50.00 | | | 50.00 | | | | |
| CARAWAY | 100.00 | 31.00 | 270.00 | 130.00 | 8.00 | 30.00 | | |
| DELL | 230.00 | 43.75 | 375.00 | 275.00 | 13.00 | | | |
| DYESS | 30.00 | 12.25 | 165.00 | 77.00 | 13.00 | 16.25 | | |
| Whitton | 30.00 | 21.00 | 150.00 | 132.00 | 13.00 | 12.00 | 7.47 | |
| HARRISBURG | 250.00 | 30.50 | 270.00 | 192.50 | 21.00 | 24.00 | 32.25 | 150.00 |
| Pleasant Valley | 50.00 | | 75.00 | 55.00 | 12.00 | | | |
| JOINER | 225.00 | 62.50 | 181.50 | 181.50 | 18.50 | 75.00 | 23.00 | |
| JONESBORO, First | 2000.00 | 53.00 | 455.00 | 303.00 | 72.00 | 174.00 | 103.05 | 1899.00 |
| Fisher Street | 150.00 | 23.50 | 202.50 | 152.50 | 15.00 | 24.00 | 12.00 | |
| Huntington Avenue | 300.00 | 32.00 | 270.00 | 166.00 | 21.00 | 42.00 | 25.00 | 125.00 |
| KEISER | | 7.00 | | 23.00 | | 24.00 | 13.25 | |
| LAKE CITY | | 7.00 | | 23.00 | | 24.00 | | |
| Lake View | | | | 50.00 | | 5.00 | | |
| Macey | 20.00 | | 24.00 | | 9.00 | 2.00 | | |
| LEPANTO | 250.00 | 63.00 | 270.00 | 200.00 | 21.00 | 59.00 | 40.00 | 100.00 |
| Garden Point | 43.00 | 8.00 | 62.00 | 40.00 | 15.00 | 18.00 | 6.00 | |
| GRADO CT., New Hope | | 4.25 | | 27.50 | | | | |
| Union Grove | | 2.50 | 20.50 | 22.00 | | | | |
| Shoh | 25.00 | 4.25 | | | | | | |
| LUNSFORD | 25.00 | 3.50 | 34.00 | 22.00 | 3.00 | | | |
| LUNORA | 100.00 | 20.00 | 100.00 | 70.00 | 21.00 | 20.00 | 75.00 | |
| MCCORMICK | 32.00 | 6.00 | 40.00 | 30.00 | 2.00 | | | |
| Calvary | 25.00 | 6.00 | 28.00 | 7.00 | 1.00 | | 6.00 | |
| MANILA | 250.00 | 53.00 | 290.00 | 190.00 | 40.00 | 40.00 | 10.00 | |
| MARKED TREE | 750.00 | 74.00 | 630.00 | 402.00 | 61.00 | 161.50 | 60.00 | 230.00 |

| | World Service and Con. Ben. | Bishops Fund | Conference Claimants | D. S. Salary | Gen. & Jurisd. Administration | Min. Salary Fund | World Comm. Union | Adv. for Christ |
|---------------|-----------------------------|--------------|----------------------|--------------|-------------------------------|------------------|-------------------|-----------------|
| MONETTE | 145.53 | 21.70 | 187.30 | 137.30 | 11.25 | | 26.17 | |
| FOREST HOME | 15.00 | 4.50 | 37.50 | 27.50 | 1.50 | | | |
| NETTLETON | 105.00 | 16.00 | 132.25 | 111.00 | 14.00 | 33.00 | 51.00 | |
| OSCEOLA | 1200.00 | 67.50 | 754.00 | 275.00 | 76.50 | 147.00 | 75.00 | |
| ST. JOHN | 60.00 | 15.00 | 67.00 | 59.00 | 21.00 | | | |
| Floodway | 10.00 | | | 11.00 | 9.00 | | | |
| Riverside | 20.00 | 5.00 | 41.00 | 30.00 | 9.00 | | | |
| Sunnyland | 25.00 | 6.00 | 52.00 | 33.00 | 15.00 | | | |
| HERMAN | | 2.19 | 1.53 | 13.75 | | | | |
| TRUMANN | 215.00 | 31.00 | 264.00 | 196.00 | 33.00 | 43.00 | 29.00 | 63.00 |
| ELMORE | 30.00 | 12.00 | 100.00 | 73.00 | 11.00 | | 2.00 | |
| TYRONZA | 240.00 | 63.00 | 237.00 | 193.00 | 25.00 | | 32.00 | 125.00 |
| WEINER | 295.00 | 35.00 | 309.00 | 230.00 | 24.00 | 68.00 | 3.00 | 11.00 |
| Tilton | 31.00 | | 37.50 | 25.50 | | | 25.00 | |
| Hickory Ridge | 160.00 | 17.50 | 150.00 | 110.00 | 18.00 | 30.00 | 160.00 | |
| CENTER VIEW | 90.00 | | 135.00 | 99.00 | 18.00 | | | |
| WILSON | 235.00 | 32.00 | 270.00 | 193.00 | 42.00 | 70.00 | 25.00 | |
| YARBRO | 140.00 | 27.30 | 234.00 | 171.00 | 16.00 | 29.00 | 19.30 | |
| Promised Land | 140.00 | 25.20 | 216.00 | 153.40 | 16.00 | 29.00 | 13.66 | |
| TOTAL | \$10266.72 | 1163.45 | 8651.31 | 6097.65 | 1025.75 | 1260.15 | 731.94 | 3071.50 |

GOLDEN CROSS: Delfore, \$10.00; Tyronza, \$22.00.

METHODIST YOUTH: Turrell-Gilmore, \$10.00; Wilson, \$10.00; Jonesboro Sub-Dist., \$2.14; Black Oak, \$2.00; Blitheville First, \$23.42; Caraway, \$3.00; Jonesboro First, \$22.34; Huntington Ave., \$15.00; Monette, \$2.00; Nettleton, \$10.15; Osceola, \$2.00; Trumann, \$3.00.

RACE RELATIONS: Garden Point, \$10.00; Wilson, \$10.00.

STUDENT DAY: Blitheville First, \$25.00.

KANSAS FLOOD RELIEF: Blitheville First, \$100.00; Caraway, \$10.00; Felter, \$5.00; Lepanto, \$25.00; Manila, \$21.00.

PARAGOULD DISTRICT

| | | | | | | | | |
|----------------------|---------|-------|--------|--------|-------|--------|--------|--------|
| BENCH GROVE | 84.00 | 6.00 | 53.00 | 38.00 | 5.00 | | 4.00 | |
| Rock Springs | 45.00 | 3.00 | 25.00 | 16.00 | | | | |
| Catch Lake | 18.00 | 1.75 | 15.00 | 11.00 | 1.25 | | | |
| HIGGINS | 37.50 | | 15.50 | 10.00 | | | | 5.20 |
| Kuchel | 30.00 | 6.50 | 25.00 | 20.00 | 4.50 | 3.00 | | |
| Peach Orchard | 37.50 | 3.50 | 10.00 | 10.00 | 10.00 | | | |
| Reyno | 75.00 | 15.75 | | | 6.50 | 7.50 | 5.00 | |
| BLACK ROCK | 50.00 | 8.50 | 75.00 | 55.00 | 11.50 | 4.50 | 10.00 | |
| Clover Bend | | | | | | | 10.00 | |
| Portia | 20.00 | 4.00 | 30.00 | 22.00 | 5.00 | 4.00 | 10.00 | |
| BOYDSVILLE | 21.00 | 2.00 | 18.75 | 14.00 | 3.00 | 1.50 | | |
| Cummings Chapel | 31.00 | 5.25 | 22.50 | 16.50 | 6.00 | | | |
| Mars Hill | 21.00 | 2.75 | 22.50 | 16.50 | 3.00 | 1.50 | | |
| CORNING | 1050.00 | 70.00 | 000.00 | 115.00 | 51.00 | 96.00 | 50.16 | |
| DEAN | 40.00 | 5.25 | 42.00 | 35.00 | 4.00 | 1.00 | | |
| Hurricane | 23.00 | 2.75 | 22.50 | 18.50 | 2.50 | 1.50 | | |
| HARVEY'S CHAPEL | 21.00 | | 5.00 | 15.00 | 5.00 | | | |
| HARDY | 70.00 | 14.44 | 123.75 | 99.75 | 5.00 | | 10.00 | |
| Willford | 20.00 | 2.00 | 22.50 | 16.50 | 2.65 | | 2.05 | |
| SMITHVILLE | 44.50 | 7.00 | 60.00 | 41.00 | 4.00 | 4.00 | 5.00 | |
| Eli Lindsey Memorial | 20.00 | 7.00 | | 20.00 | 4.00 | | | |
| Denton | | | 12.00 | | | | | |
| MACEDONIA (Leonard) | 77.00 | 19.00 | 70.00 | 89.00 | 16.00 | | 5.00 | 5.00 |
| Simmons Chapel | 69.00 | 9.75 | 77.00 | 60.50 | 7.50 | 5.70 | 3.00 | |
| Union Grove | 19.50 | 5.00 | 41.00 | 30.00 | 5.00 | | 2.50 | |
| MAMMOTH SPRING | 60.00 | 16.00 | 135.00 | 100.00 | 10.00 | 15.00 | 9.00 | |
| MARMADUKE | 120.00 | 14.47 | 123.75 | 90.75 | 12.50 | 6.75 | 12.50 | |
| Oak Grove (Attica) | 37.00 | 5.25 | 45.00 | 33.00 | 15.00 | 4.00 | | |
| Middlebrook | 19.00 | | 23.00 | 16.00 | 10.00 | | | |
| Ravenden Springs | 60.00 | 11.37 | 97.50 | 71.50 | 12.00 | 3.00 | 10.00 | |
| Ravenden | 15.00 | 4.00 | 15.00 | 15.50 | 5.00 | 1.00 | | |
| PARAGOULD, First | 1399.00 | 43.12 | 439.26 | 302.45 | 49.95 | 80.32 | 200.00 | |
| Griffin Memorial | 275.00 | 28.50 | 226.20 | 178.20 | 27.50 | | 25.00 | |
| PARAGOULD CT. | | | | | | | | |
| Pruett's Chapel | 50.00 | | 25.00 | 25.00 | | | | |
| Shioh | 127.00 | 7.00 | 60.00 | 44.00 | 9.00 | 4.00 | 3.45 | |
| Woods Chapel | 36.00 | | 30.00 | 30.00 | | | | |
| Camp Ground | 24.00 | | 50.00 | | | | | |
| Gainesville | 25.00 | 3.50 | 30.00 | 22.00 | 9.25 | 4.00 | | |
| PIGGOTT | 502.00 | 36.00 | 300.00 | 222.00 | 31.00 | 34.00 | 77.25 | 175.00 |
| POCAHONTAS | 500.00 | 36.75 | 315.00 | 231.00 | 30.00 | 102.00 | 60.30 | |
| RECTOR, First | 750.00 | 63.00 | 450.00 | 264.00 | 50.00 | 112.00 | 88.25 | |
| Fourth Street | 70.00 | | 50.00 | 132.00 | | | | |
| Five Oaks | 32.50 | 7.00 | 60.00 | 44.00 | 6.00 | 5.00 | | |
| RECTOR CT., Ebenezer | 48.00 | 6.12 | 52.25 | 38.50 | 6.00 | 2.00 | 10.00 | |
| Liberty Hill | 24.00 | 1.75 | 18.75 | 14.00 | 4.00 | | | |
| Ramers Chapel | 55.00 | 5.00 | 41.00 | 30.00 | 7.50 | 3.00 | 3.87 | |
| WRIGHT'S CHAPEL | 58.00 | 7.87 | 67.50 | 18.63 | 3.00 | 5.00 | | |
| Mt. Zion | 25.00 | 2.31 | 37.50 | 27.50 | 5.00 | | | |
| Langley's Chapel | 21.00 | 3.31 | 20.00 | 15.00 | 5.00 | | | |
| Gravel Hill | 25.00 | | | | | | | |
| SEEDGWICK | 30.00 | 3.00 | 24.50 | 19.50 | 3.50 | 1.50 | | |
| Egypt | 37.50 | 3.00 | 24.50 | 19.25 | 5.00 | 2.33 | | |
| STANFORD | 25.00 | 13.05 | 52.81 | 82.50 | 14.00 | 12.00 | | |
| Morning Star | 43.00 | 6.50 | 56.25 | 41.25 | 7.00 | 3.00 | | |
| Warrens Chapel | 40.00 | 4.37 | 37.50 | 27.50 | 4.00 | 3.00 | | |
| Bard | 43.00 | 6.56 | 20.00 | 20.00 | 7.00 | 3.00 | | |
| New Liberty | 29.00 | | | | | | | |
| Schugtoun | 43.00 | 6.56 | 56.25 | 41.25 | 7.00 | 3.00 | | |
| WALNUT RIDGE | 500.00 | 63.00 | 252.00 | 202.00 | | 42.00 | 21.56 | |
| SCATTER CREEK | 15.00 | | | | | | | |
| POWATAN | 18.00 | | | | | | | |

ARKANSAS-LO

ANNUAL SIMULTANEOUS

December 30th Through January 6th

Little Rock Conference Quotas

| | | |
|-------------------------|----------------------|------|
| * ARKADELPHIA DISTRICT | Subscription Quota | 1294 |
| J. M. HAMILTON | JOHN B. HEFLEY | |
| District Superintendent | District Director | |
| * CAMDEN DISTRICT | Subscription Quota | 1888 |
| CONNOR MOREHEAD | W. R. BOYD | |
| District Superintendent | District Director | |
| * HOPE DISTRICT | Subscription Quota | 1396 |
| E. D. GALLOWAY | W. R. BURKS | |
| District Superintendent | District Director | |
| * LITTLE ROCK DISTRICT | Subscription Quota | 2434 |
| FRANCIS A. BUDDIN | STANLEY T. BAUGH | |
| District Superintendent | District Director | |
| * MONTICELLO DISTRICT | Subscription Quota | 1113 |
| Wm. E. BROWN | FRED W. SCHWENDIMANN | |
| District Superintendent | District Director | |
| * PINE BLUFF DISTRICT | Subscription Quota | 1332 |
| J. L. DEDMAN | A. J. CHRISTIE | |
| District Superintendent | District Director | |

North Arkansas Conference Quotas

| | | |
|-------------------------|--------------------|------|
| * BATESVILLE DISTRICT | Subscription Quota | 935 |
| S. B. WILFORD | MAURICE LANIER | |
| District Superintendent | District Director | |
| * CONWAY DISTRICT | Subscription Quota | 1319 |
| C. M. REVES | IRL BRIDENTHAL | |
| District Superintendent | District Director | |
| * FAYETTEVILLE DISTRICT | Subscription Quota | 1167 |
| W. F. COOLEY | S. O. PATTY | |
| District Superintendent | District Director | |
| * FORREST CITY DISTRICT | Subscription Quota | 1222 |
| ETHAN DODGEN | LLOYD M. CONYERS | |
| District Superintendent | District Director | |
| * FORT SMITH DISTRICT | Subscription Quota | 1760 |
| W. HENRY GOODLOE | BEN C. FEW | |
| District Superintendent | District Director | |
| * JONESBORO DISTRICT | Subscription Quota | 1463 |
| E. B. WILLIAMS | PAUL M. BUMPERS | |
| District Superintendent | District Director | |
| * PARAGOULD DISTRICT | Subscription Quota | 924 |
| A. N. STOREY | RICHARD E. CONNELL | |
| District Superintendent | District Director | |
| * SEARCY DISTRICT | Subscription Quota | 1086 |
| COY E. WHITTEN | W. VANCE WOMACK | |
| District Superintendent | District Director | |

THE ARKANSAS-LOUISIANA AREA GIVES ONE

The Ministers
In The Arkans

The entire progre
campaign for our pa
METHODIST, during
that these papers, a
manner, exert upon
In view of the
begins January 18th
pleted in the week g
our preachers and p
tions during the wee
I know that I
Circulation Campaig

Every Methodist s

You v

LOUISIANA AREA UNITES IN

CIRCULATION CAMPAIGN

With Goal Of 30,000 Subscribers!

Louisiana Conference Quotas

| | |
|--|--|
| * ALEXANDRIA DISTRICT Subscription Quota | 1099 |
| JOLLY B. HARPER District Superintendent | KENNETH G. McDOWELL District Director |
| * BATON ROUGE DISTRICT Subscription Quota | 1828 |
| EDWARD W. HARRIS District Superintendent | MARVIN H. CORLEY District Director |
| * LAKE CHARLES DISTRICT Subscription Quota | 1454 |
| KARL TOOKE District Superintendent | R. M. WALKER District Director |
| * MONROE DISTRICT Subscription Quota | 1609 |
| W. H. GILES District Superintendent | ALTON A. McKNIGHT District Director |
| * NEW ORLEANS DISTRICT Subscription Quota | 1744 |
| H. L. JOHNS District Superintendent | SAM NADER District Director |
| * RUSTON DISTRICT Subscription Quota | 1469 |
| GEORGE W. POMEROY District Superintendent | BEVERLY E. BOND District Director |
| * SHREVEPORT DISTRICT Subscription Quota | 2419 |
| J. HENRY BOWDON District Superintendent | GEORGE HARBUCK District Director |

Campaign In Local Church

1. Solicit every Methodist Home for a new subscription or renewal for your church paper during the week of Circulation Campaign.
2. Make a report on Monday, Jan. 7th, to your District Superintendent and to the office of publication in Little Rock, of the results of the Campaign.
3. Any necessary follow-up work may be reported as soon as complete.

Watch Reports Of Campaign

Watch your paper in the issue of January 17th for a full report by Districts and by Charges of the results of the Circulation Campaign as received the week of January 6 through January 12th.

The Subscription Price \$1.50

The subscription price remains at \$1.50 per year despite the heavy increase in the cost of paper and printing.

A substantial increase in the subscription list is necessary if we avoid a price increase or some other adjustment.

The Quota And The Goal

The Charge or District has reached its authorized QUOTA when in the Charge or District new subscribers, plus renewals, plus subscriptions not due equal one subscription for each seven active members in the Charge or District.

The Subscription Goal is 30,000 subscribers. Help us reach the goal.

WEEK OF ITS CHURCH PAPERS . . . DEC. 30th Through JAN. 6th

CURRENT NEWS IN THE RELIGIOUS WORLD

Selected from Religious News Service Releases

Bill Asks Church Exemption From Meals Tax

A bill to exempt churches from payment of state meals tax on meals served in their own halls has been filed for consideration by the 1952 Massachusetts legislature by Rep. Thomas E. Key, Winthrop Republican. Similar bills were rejected this year and in other recent years. Also already filed for consideration by the 1952 Massachusetts legislature is a proposal that the five per cent state meals tax be broadened to apply to meals costing 70 cents or more, instead of \$1 or more as at present.

Canadian Anglicans Want Anti-Religious Broadcasts Answered

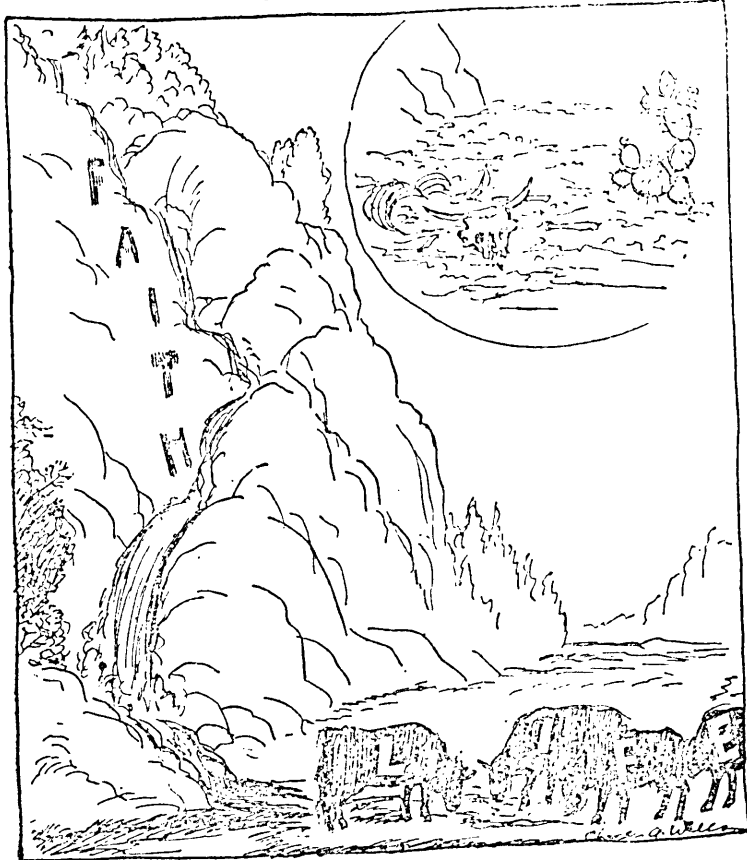
Radio time to counter alleged anti-religious broadcasts over Canadian Broadcasting Corporation stations was asked by the executive committee of the General Synod of the Church of England in Canada. However, the executive committee gave its full support to freedom of speech on the air. Its statement resulted from discussion in the House of Commons, at Ottawa, of the CBC's broadcasting of unconventional or unpopular views on ethical and other matters, including Christian doctrine. Criticism had been launched against such broadcasters as Dr. Brock Chisholm, director of the World Health Organization; and Dr. Anna Freud, psychologist and daughter of the late Dr. Sigmund Freud. It has been charged that some arguments of these and other speakers have been anti-democratic and irreligious. The Anglican body said the CBC has "a public responsibility to broadcast different points of view as expressed by informed persons on questions of current interest."

'Orphan Anonymous' Seeks Gifts For Children

Residents of Tennessee's capital

INSEPARABLE

By Charles A. Wells



The relationship of faith to life is hard to comprehend until we have contemplated life without faith. Where men have had no belief, it has been universally true that the creative fruitful qualities of life die out. Men only create greatness when they are inspired, and how can they be inspired when they do not believe in anything? Faith thus is like a stream of water coming down into a valley—a valley that might be a desert with no life in it, except for the miracle of water mixing with barren sand and clay to make a lush and fruitful scene. If you are finding your life barren, fruitless, look to see if you have forgotten what is inseparable from a fruitful life—a strong and vital faith.

city, Nashville, are being urged to become members of "Orphans Anonymous." The idea is to make some child happy. Membership is

open to all comers. All one has to do is to pledge that between now and Christmas a donation of toys, and Christmas a donation of toys, gift of clothing or money will be

sent to some orphanage of the giver's choice.

Christmas Parade To Depict Life of Christ

The Life of Jesus will be depicted in the second annual Christmas parade to be staged at Little Rock, Ark., Dec. 15 by churches of eight denominations and the Y. M. C. A.

The procession of 44 floats will pass down the main streets of North Little Rock and end at the steps of the State Capitol for a Christmas lighting ceremony to be conducted by Secretary of State C. G. (Crip) Hall. Hamilton Moses, president of the Arkansas Power & Light Co., and teacher of the largest men's Bible class in the State in Immanuel Baptist Church, will speak at the ceremonies on the capitol steps. Music will be provided by the Negro choir of the Arkansas Agricultural and Mechanical College, Pine Bluff. W. H. Moore, employee of the state highway department, will be parade marshal. The Rev. Joseph Sefcik, pastor of Park Hill Presbyterian church, is parade chairman. The parade will be televised by a Memphis station.

Dr. Goodspeed, Bible Scholar, Honored On 80th Birthday

Dr. Edgar J. Goodspeed, internationally known Bible scholar, was honored on his 80th birthday at a dinner party sponsored by members of First Baptist church in Los Angeles, where he has for many years been a deacon. Dr. Goodspeed was presented with an engraved desk set and a sheaf of congratulatory messages from friends and former students all over the nation.

No matter how busy you may think you are, you must find some time for reading, or else surrender yourself to self-chosen ignorance. —Atwood H. Townsend, Air Conditioning & Refrigeration News

NORTH ARKANSAS CONFERENCE TREASURER'S REPORT

(Continued from page 7)

| | World Service and Con. Ben. | Bishops Fund | Conference Claimants | D. S. Salary | Gen. & Jurisd. Administration | Min. Salary Fund | World Communion | Advance for Christ |
|--------------------|-----------------------------|--------------|----------------------|--------------|-------------------------------|------------------|-----------------|--------------------|
| Fake's Chapel | 25.00 | 2.50 | 22.50 | 16.50 | 4.00 | 4.00 | | 12.50 |
| McRAE | 50.00 | 16.25 | 75.00 | 45.00 | 5.00 | 3.00 | | |
| Copperas Springs | | 5.70 | | 35.75 | 6.00 | 6.00 | | |
| McRAE EXT., Garner | | 3.50 | 26.25 | 19.25 | 6.00 | 6.00 | | 15.00 |
| Floyd | 30.00 | | 60.00 | 44.00 | | | | |
| Vinity | 15.00 | | 10.00 | | | | | |
| 16th Section | 30.00 | 4.00 | 20.00 | 20.00 | | | | |
| NEWTON COUNTY | 50.00 | | 65.00 | 50.00 | | | | |
| PANGBURN | 50.00 | | 50.00 | 45.00 | 2.00 | | | |
| PANGBURN | 40.00 | | 40.00 | 24.00 | 2.00 | | | |
| Mt. Pisgah | 40.00 | | 30.00 | 11.00 | | | | 22.70 |
| Oak Grove | 40.00 | | | | | | | 7.00 |
| QUITMAN | | 6.90 | | 8.80 | | 1.50 | | |
| Enders | | 2.27 | | .83 | | 2.25 | | 3.60 |
| Goodloe | | 1.00 | 6.00 | 5.50 | | | | |
| New Hope | | 1.00 | 12.00 | 12.00 | 2.00 | 2.00 | | 4.00 |
| ROSEBUD | 10.00 | | 6.00 | 3.00 | | | | |
| Harmony | 3.00 | | 13.00 | 9.00 | 4.00 | 2.00 | | 6.50 |
| Gum Springs | 13.00 | 2.00 | 11.25 | 8.25 | 1.18 | | | 3.00 |
| Center Hill | 7.50 | 1.25 | | | | | | |

| | | | | | | | |
|---|-----------|--------|---------|---------|--------|--------|--------|
| Smyrna | 833.33 | 4.50 | 8.50 | 15.50 | 65.50 | 77.00 | 5.00 |
| SEARCY | | 45.50 | 390.00 | 286.00 | | | 121.57 |
| VALLEY SPRINGS | | 6.62 | 56.25 | 41.25 | 3.00 | 4.18 | |
| Bellefonte | | 6.62 | 56.25 | 41.25 | 3.00 | 4.18 | |
| Bergman | | 2.65 | 19.00 | 16.50 | 3.00 | 1.63 | |
| Everson | 15.00 | 2.65 | 6.30 | 6.30 | 6.00 | 1.65 | |
| VAN BUREN CO. NO. 1 | | 4.38 | 37.50 | 27.50 | 3.00 | 9.50 | 10.50 |
| Damascus | 25.00 | .86 | 5.00 | 4.00 | 1.50 | | |
| Shirley | 10.00 | .88 | 7.50 | 5.50 | 1.50 | 2.00 | |
| Steele-Hopewell | | | | | | | |
| VAN BUREN CO. NO. 2 | | 3.50 | 4.41 | 2.53 | .92 | | 3.00 |
| Scotland | | | | | | | 3.50 |
| Culpepper | | | | | | | |
| Pleasant Grove | 5.00 | .28 | 2.40 | 1.76 | .64 | | |
| Walnut Grove | 7.50 | .88 | 7.50 | 5.50 | 2.00 | | |
| VAN BUREN CO. NO. 3 | | | | | | | 5.25 |
| Fairbanks | 20.00 | | 10.00 | | | | |
| Dennard | | 2.20 | | 4.30 | 4.00 | | |
| Morganton | | 3.06 | 26.24 | 19.24 | 3.00 | 2.00 | |
| WARD | 39.00 | 8.75 | 18.75 | 55.00 | 1.50 | | |
| Wilburn | | 2.19 | | | | | |
| 16th Section | 7.50 | 1.76 | 15.00 | 11.00 | 3.00 | | |
| TOTAL | \$4658.99 | 533.23 | 3273.35 | 3248.44 | 611.40 | 430.32 | 455.35 |
| GOLDEN CROSS: Augusta, \$75.00; Beebe, \$25.00; Cabot, \$20.00. | | | | | | | |
| METHODIST YOUTH: Augusta, \$14.25; Searcy Sub-District, \$12.48; McCrory, \$10.00; Searcy, \$23.00. | | | | | | | |
| RACE RELATIONS: Cabot, \$20.00. | | | | | | | |
| WESLEY FOUNDATION: McCrory, \$125.00. | | | | | | | |
| KANSAS FLOOD RELIEF: Griffithville, \$15.00. | | | | | | | |

RECAPITULATION

| DISTRICT | World Service and Con. Ben. | Bishop Fund | Conference Claimants | D. S. Salary | Gen. & Jurisd. | Min. Salary Fund | World Communion | Advance for Christ | Golden Cross | Methodist Youth | Race Relations | Student Day | Wesley Foundation | Kansas Flood Relief |
|--------------|-----------------------------|-------------|----------------------|--------------|----------------|------------------|-----------------|--------------------|--------------|-----------------|----------------|-------------|-------------------|---------------------|
| Batesville | 4,177.10 | 405.82 | 3,165.42 | 2,524.89 | 345.78 | 297.05 | 370.28 | 300.00 | 12.50 | 111.57 | 12.50 | 133.35 | 405.72 | 54.00 |
| Conway | 7,184.23 | 549.06 | 3,989.00 | 3,136.78 | 539.23 | 854.75 | 463.13 | 2,168.05 | 12.40 | 66.30 | 5.00 | 10.00 | 55.00 | 81.76 |
| Fayetteville | 6,278.05 | 555.07 | 4,153.25 | 3,072.46 | 517.60 | 767.15 | 623.15 | 1,345.46 | 55.00 | 139.34 | 17.00 | | | 736.10 |
| Forrest City | 8,374.95 | 740.38 | 5,793.90 | 4,271.21 | 747.25 | 1,257.75 | 515.25 | 1,777.75 | 50.00 | 107.48 | 196.75 | 10.50 | | 931.64 |
| Fort Smith | 10,002.26 | 1,004.16 | 6,069.58 | 4,728.53 | 881.27 | 953.26 | 458.26 | 1,023.75 | 82.00 | 123.11 | 20.00 | 25.00 | | 654.29 |
| Jonesboro | 10,266.72 | 1,168.45 | 8,651.31 | 6,007.85 | 1,025.75 | 1,280.15 | 731.94 | 3,931.50 | 25.66 | 138.40 | 5.00 | 10.00 | 10.00 | 161.00 |
| Paragould | 7,126.93 | 615.41 | 4,584.82 | 3,298.71 | 522.63 | 636.08 | 569.64 | 200.00 | 120.00 | 59.73 | 20.00 | | 125.00 | 339.37 |
| | | 533.23 | 3,273.35 | 3,248.44 | 611.40 | 430.32 | 465.35 | 377.10 | 357.55 | 788.71 | 276.85 | 188.85 | 595.79 | 15.00 |

WOMAN'S SOCIETY OF CHRISTIAN SERVICE

MRS. EWING T. WAYLAND, Editor

NEW SOCIETY IN ARKADELPHIA DISTRICT

A Woman's Society of Christian Service was organized at Point Cedar on the Amity Circuit of the Arkadelphia District, on November 27. Miss Margaret Marshall, District Worker, and Mrs. J. H. Shults, District Promotion Secretary, assisted the ladies of the church in the organization. Officers elected were: President, Mrs. C. W. Knight; Vice-President, Mrs. R. E. Skates; Secretary-Treasurer, Mrs. J. E. McCormick; Secretary of Missionary Education, Mrs. J. W. Skates; and Secretary of Christian Social Relations, Mrs. J. A. Brantley. The next meeting will be at the church on December 14.—Reporter.

37 YOUNG WOMEN WANTED FOR ASIA

The Woman's Division of Christian Service of the Methodist Church plans to send 337 young women next summer on three-year assignments to seven foreign countries. Twelve will go to India and Pakistan, 25 to Burma, Malaya, Philippines, Japan, and Korea. India asks specifically for a laboratory technician, physical education director, hospital business manager, office secretary for a large high school, kindergarten and primary school supervisor, nursery school supervisor, public health nurses, nutrition instructor qualified for research studies. "Threes" must be college graduates between the ages of 21 and 28 who qualify for Christian service. Further information may be obtained by writing Miss Kathryn Bieri, Department of Missionary Personnel, 150 Fifth Avenue, New York 11, N. Y.

GENTRY ORGANIZES WESLEYAN SERVICE GUILD

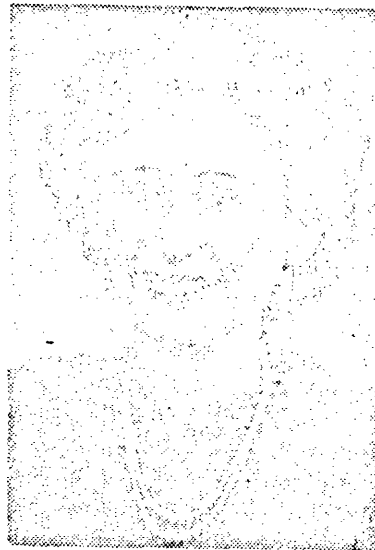
A group of employed Methodist women of Gentry, Arkansas met in the parsonage on the evening of December 4. With the assistance of the District Guild Secretary, Mrs. Velma B. Oakes, they organized themselves into a unit of the Wesleyan Service Guild. The following officers were elected: President, Mrs. Jewel Divens; Vice-President, Miss Virginia Edgett; Promotion Secretary, Mrs. Frances Kelly; Secretary-

Arkansan Enters Special Church Work

MISS ANNETTE WOOD, daughter of Mrs. E. C. Palmer and the late T. H. Wood, Texarkana, has gone to Cedartown, Georgia, where she has begun as a nurse at the Ethel Harpst Home. Miss Wood, a member of Fairview Church, was born in Little Rock, but had lived in Texarkana since early childhood. She is a graduate of Arkansas High School and attended Texarkana Junior College.

Miss Wood was one of the first employees at the Methodist Hospital at Hot Springs, first as Receptionist, later as secretary to R. E. Simpson, Superintendent. In addition, she has served as a nurse's aid at St. Michael's, and has worked at the Central Supply.

Long active in church work, it was at the Wesleyan Service Guild Week-End Retreat in August that Miss Wood determined to enter full-time Christian service, and she has been easily placed in an institution



MISS ANNETTE WOOD

for which her qualifications make her suited.

ALEXANDRIA DISTRICT BOARD MEETS

Members of the executive board of the Woman's Society of Christian Service of the Alexandria District of the Methodist conference gathered recently in the home of Mrs. George E. Powell on Hill avenue. On the agenda was the discussion of district work followed by reports of the secretaries.

Mrs. R. L. Constant of Oklahoma City, as guest speaker, urged the sharing of responsibilities through the work of the W. S. C. S. Mrs. Merb Warren of Cedar Rapids, Ia., state secretary of Christian Social Relations and local church activities in the North Iowa Conference, spoke on projects of the women in Iowa.

Mrs. J. L. Groves, who is district secretary of spiritual life, gave the devotional on "Prayer."

Following the program luncheon was served. Others attending were Mesdames J. I. Roby, Hilton Reynolds, Wiley Jones, Russell Galloway, Warren Constant, Phillip Stanley, C. W. Tebow and Jolly B. Harper.

Treasurer, Miss Frankie Hawkes; Co-ordinator, Mrs. O. L. Cole.

Miss Bertha Crosby of Siloam Springs was a guest.—Mrs. Velma Oakes, Fayetteville District Guild Secretary.

LIFE MEMBERSHIP GIVEN AT TEA

Mrs. B. T. Wilgus was honored on Sunday afternoon, November 25, by a lovely tea given by the W. S. C. S. at the church annex. A Life Membership to the W. S. C. S. was presented to the honoree by Mrs. F. F. Griffin, president of the W. S. C. S. This presentation was in recognition of many years of faithful service Mrs. Wilgus has given the church.

Mrs. F. F. Kaigler presided at the guest book.

Mrs. Henry Rucker, assisted by Mrs. Robert Morris and Mrs. A. E. Chauvin, served cake and tea to many friends who called during the appointed hour.—Reporter.

the support of two children in South America as a project.

Rev. Frank Tucker, pastor at Ingleside Church, Baton Rouge, told of his work as a pastor of a union church in Rio de Janeiro, at the Woman's Society of Baker Methodist Church, Baton Rouge, which was held at the home of Mrs. Joseph B. Loudon.

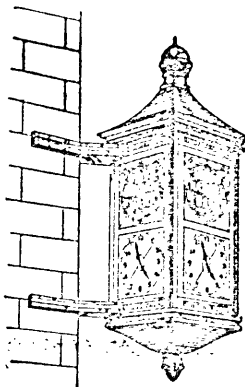
Woman's Society of Christian Service and the Wesleyan Service Guild of Gardner Memorial, North Little Rock, had a joint meeting on December 3, with Mrs. H. H. Fullbright, Conference Secretary of Promotion, as guest speaker.

A preacher, watching a marble cutter at work, exclaimed: "I wish I could deal such clanging blows on stony hearts!" The workman replied: "Maybe you could if you worked like me, on your knees."—Free Methodist

NEWS IN BRIEF

The Woman's Society of Christian Service of Indian Bayou Church, Lake Charles District, sponsored a gumbo supper on November 29th to help with the building project of the church. Mrs. A. E. Robideaux, president of the society, was in charge of the project for a new parsonage.

University Methodist Church Guild in Lake Charles discussed Latin America at their meeting November 20th, in the home of Mrs. R. E. Read. Mrs. Lena Sweeney and Mrs. Read presented the program. Members discussed contributing to



THE UNION NATIONAL BANK

Is Happy To Serve
YOU!

And ALL of us here make EVERY attempt
to emphasize this fact!



UNION NATIONAL BANK

Fourth and Louisiana Streets

Capitol and Surplus \$2,500,000

LITTLE ROCK, ARKANSAS

MEMBER FEDERAL DEPOSIT CORPORATION

Wishes You and Yours
**A Very Merry
Christmas! . . .**
and a Bright New Year . . .

CURRENT NEWS IN ARKANSAS METHODISM

SPECIAL SERVICE AT NEWARK

Old Folks Day, with its three-score-ten choir, on Sunday, Nov. 18, was one of the high days at the Hazel Edwards Memorial Church. The pastor, Rev. B. L. Wilford, had announced the service several weeks ahead, and had worked with his appointed committees to secure a full attendance, and to make it a real worthwhile service. All the old people were given special invitation, and furnished transportation where it was needed; also certain persons were appointed to assist them up the steps where it was necessary.

The choir was filled with old men and women, for the announcement had been made, that no one under seventy years of age was eligible to sing in the choir at that service. The pastor enacted the role of old time circuit rider, entering the auditorium at the proper moment and walking down the aisle with his saddle riders across his shoulders. He walked up into the pulpit, took out his Bible, hymn book (word edition) discipline, laid them on the stand, and announced his hymn, "Amazing Grace". He then lined it off, two lines at a reading, the two lines to be sung, and then pause for the reading and singing of the next two, and so on throughout the entire hymn.

"How Firm a Foundation" was one of the hymns used—supplying the stanza, (omitted in last revision of the Hymnal)

*"Even down to old age, all my people shall prove,
My sovereign eternal, unchangeable love;
And when hoary hairs shall thy temples adorn,
Like lambs they shall still in my bosom be borne."*

The pastor used as a theme for his sermon, "Growing Old Gracefully", stressing the fact, that for a happy old age, we must keep busy and alert, cultivate a spirit of love and cheerfulness, and never lose interest in people or the worthwhile things of life. In the large audience was one old man approaching his 96th birthday; also a Batesville lady, in whose home the pastor spent his first night, when he arrived as presiding elder of the Batesville District, 41 years ago.

A potluck dinner was served in the basement. The long tables were loaded down with good things. Fellowship and goodwill pervaded in fine order. An informal program after noon, consisted mostly of short talks and the singing of old-time favorite songs. All in all, it was a great red letter day with us, and one long to be remembered.—Re-

FELLOWSHIP ON ROSEBUD CIRCUIT

Center Hill Church on Rosebud Circuit was the meeting place, the evening of November 20th, for the annual Thanksgiving fellowship dinner and worship service for members of churches on the charge. Harmony, Smyrna, and Center Hill churches were well represented, as well as nearby Mt. Pisgah, whose members had received special invitation to share the season of Thanksgiving with neighbor churches. The district superintendent, Rev. Coy Whitten, and lay team workers, Joe Pierce, Sue Christian, and Wilma Fulbright, were present.

It was fitting that for this time set aside for giving thanks to God for the good things given throughout the year, that the group should be guided by the forceful message of Rev. J. Albert Gatlin of Conway. Brother Gatlin promoted the launching of the lay team work upon this circuit three years ago, during his ministry at Searcy, and, through his untiring efforts for the improvement of the rural churches of this conference, continues to give inspiration.

Under the leadership of the pastor, Rev. Harold Brent, and with the assistance of lay team workers, led by Joe Pierce, and guided by the program of the Town and Country Commission, members of these churches can point with pride to much visible improvement. A better financial system, increased attendance, improvement of buildings in the churches of Smyrna and Harmony and complete redecoration and modernization of heating and lighting systems at Center Hill church have all been accomplished. Two active organizations of the Woman's Society of Christian Service carry out a full program of missionary work. Each church on the circuit has its name marker. As a part of the additional worship services led by the lay team and as a result of

FORREST CITY DISTRICT MEN'S MEETING

In spite of the weather, more than one hundred men of the Forrest City District gathered at the Pekin Wood Cafeteria in West Helena on Tuesday, November 13, for the evening meal, business meeting and inspirational address.

After the delicious meal was eaten, the meeting was called to order by its chairman, Mr. Homer Townes of Forrest City. Rev. J. J. Decker, pastor of the West Helena Methodist Church, and host pastor, extended the welcome. Several other West Helena members also greeted the group.

The official count recorded 32 members of the West Helena church present. The host church had the largest attendance. Elaine was second with 14 present, and Forrest City third with 13 there.

Clay Bumpers reported on the physical progress of work on the Camp Project at Bear Creek Lake. He reported the roadbed about complete and ready for gravel and that just as soon as it is gravelled work will be ready to start on the well.

C. L. Harris, chairman of the Finance Committee, urged all churches to hasten collection of money for the Project so that actual work may go ahead and the camp be in readiness for next summer.

Rev. Ethan W. Dodgen, District

the revival services held on the charge, a number of people have dedicated themselves to Christian living. Youth Fellowship teams from Searcy have shared with the youth of the circuit some of the inspiration of Assembly and of Aldersgate experiences.

The three years in which this experiment has been carried out has indeed been full of rich and sweet fellowship as workers sought together to bring Christ's message to more people of the countryside.—Reporter

LITTLE ROCK CONFERENCE CALENDAR 1951-52

Adopted By Interboard Council,
L. R. Conference

DECEMBER

- 16-23 Methodist Children's Home Week
- 27 Little Rock District Evangelism Retreat
- 28 Pine Bluff District Evangelism Retreat
- 30 Arkadelphia District Evangelism Retreat
- 30 Student Recognition Day
- 30-Jan. 6 Arkansas Methodist Circulation Campaign
- 31 Watchnight Services

JANUARY, 1952

- 18-27 Area "B" Evangelism Mission (Little Rock, Arkadelphia, Pine Bluff Districts, and the North Arkansas Conference.)

FEBRUARY

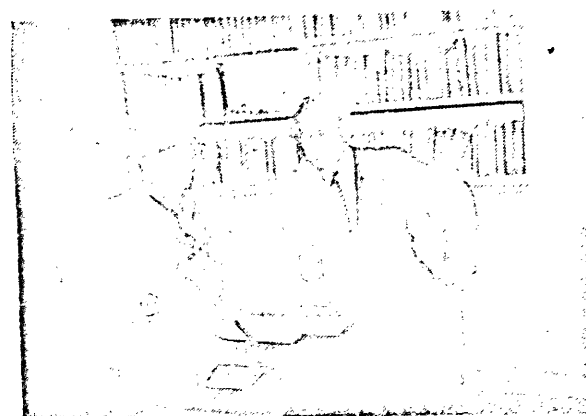
- 4-7 Ministers' Week at Southern Methodist University
- 10 Race Relations Day
- 10-15 District Missionary Rallies
- 10—Pine Bluff District
- 11—Little Rock District
- 12—Monticello District
- 13—Arkadelphia District
- 14—Camden District
- 15—Hope District
- 18 Board of Ministerial Training meets in Little Rock
- 24 Laymen's Day
- Special Emphasis on Evangelism in the Church School February 21 to Easter Sunday.

Superintendent, made several statements relative to the work of the camp and also about the coming United Evangelistic Mission and District Conference.

Following the introduction of guests and announcements, Rev. Raymond Franks, pastor at Forrest City, introduced the speaker, Rev. James R. Shelton, now pastor of Wesley Methodist Church in Conway. Brother Shelton's subject was "Being Salesmen for Christ". The speaker, who was for several years a sales manager with the Frigidaire Division of General Motors drew upon his excellent experience in the business world for numerous very practical suggestions to those who would sell their Christian faith and practice to the world.

The West Helena men and their pastor did a splendid job of entertaining their guests. Everyone seemed to think the evening had been well spent.—Reporter

SEEN AT THE OPEN HOUSE AT FIRST CHURCH, LITTLE ROCK



Upper left: Mrs. Raney, widow of T. J. Raney, the first chairman of the Building Committee of First Church, stops for a visit with Dr. Aubrey G. Walton, pastor, in his office in the new educational building.

Lower right: Dr. C. M. Reves, Conway District superintendent and former pastor of First Church, greets Rev. Edwin Keith, associate pastor, in the dining room. Mrs. H. W. Jefferies is seen at the punch bowl.

Below: Mrs. Earl, wife of C. H. Earl, chairman of the Open House Committee, and E. J. Rauschkelb greet guests at the top of the circular stairs in the educational building as they arrive for the open house.



"Along A Country Road" The Town and Country Commission

The Methodist Church

The North Arkansas Conference
Hendrix Station, Conway, Arkansas

Paul E. Martin, Bishop
Rev. Floyd G. Villines,
President

Mr. Lester Hutchins,
Vice-President
Rev. N. Lee Cate,
Secretary

Rev. J. Albert Gatlin, Executive Secretary

ADDED ATTRACTION FOR RURAL CHURCHES

In September of this year, a plan was outlined which has come to reality in a wonderful way. It was a plan which would add to the training of those ministerial students, who are pastoring charges, as well as add to the worship services of the churches which they serve. This plan concerned bulletins.

At the same time that our ministerial students are in training we must remember that many of them are serving charges. And, along with the formal education and help which they are getting in school, they need some practical knowledge and experience which each of them will inevitably use sooner or later in their ministry. A very good example of this type of knowledge and experience is the printing of the church bulletin. Yet, each church can profit by this addition to their worship service. The town and city church would not think about being without a bulletin, and the need of the rural church for such an aid in worship is just as great.

Also, this plan had a third motive. These bulletins are a means by which the Methodist Order of Worship can be presented to every congregation in the conference. Their use, not as a crutch, but as a guide to worship would enable any wor-

shipper to find a very similar order in all the Methodist Churches.

The procedure in which this plan has developed began when the use of a mimeograph machine was given to the Town and Country Commission Office by Hendrix College. This machine has been set up in the office and is being used by several of the student pastors. A second-hand typewriter with a special carriage for this purpose has been made available to them. Also, stencils are purchased in large quantities through the office in order to give the student a cheaper rate. Therefore, the student pastor can come to the office, cut the stencil, and mimeograph the bulletin with the most efficiency and economy.

Those participating in this program are as follows: James Beal, Oppelo; Paul Davis, Gravelly Circuit; J. G. Greening, Ward-Wilburn; Fred Mooring, Salem; Roy Moyers, McRae; Stanley Reed, Quitman Circuit; Travis Williams, Van Buren Circuit No. 3.

It is hoped that this program may develop further to the charges of all the student pastors and that all of us may profit by its effect. This may be a step toward the goal of a worship service every Sunday in every church.—J. Albert Gatlin

designed by Frank H. Govan to utilize the auditorium's extensive stage equipment.—Guy Shannon.

Take a piece of wax, a piece of meat, some sand, some clay and some shavings and put them on the fire. Each is being acted upon by the same agent, yet the wax melts, the meat fries, and the sand dries up, the clay hardens and the shavings blaze. Just so, under identical influence of circumstances and environment, one man becomes stronger, another weaker, and another withers away.—Lion's Tale, Samson, Ala.

DEDICATIONS AT SWIFTON

On December 16, at 11:00 a special service of dedication of several gifts being made to the Swifton Methodist Church will be conducted by Bishop Martin. Rev. J. E. Linam is the pastor. Among the gifts an organ by George Kell, communion table and pulpit furniture by Elmer Taylor, lighted cross and maghoney handmade collection plates, by Ben Brann, and Communion trays and plates by the Ray Hughes family. Other gifts to be announced later will be dedicated at the same service.



"Peace on earth,
good will to men
From Heaven's all-
gracious King—"

E. H. Sears: Christmas Carol

The m.m. Cohn company
LITTLE ROCK

HENDRIX COLLEGE NEWS

Alumni Officers, Board Members Chosen

Newly elected president of the Hendrix Alumni Association is Dr. W. Henry Goodloe, '24, district superintendent of the Ft. Smith District of the Methodist Church. He succeeds R. T. Steel of Conway. Charles A. Stuck, Sr., '21, of Jonesboro, is the new vice-president of the association. Re-elected as recording secretary of the alumni is Mrs. Margaret Henig Blackburn, '26, North Little Rock.

Alumni officers and three new members of the Hendrix Board of Governors were elected by mail ballots, according to Miss Elizabeth Poole, alumni coordinator.

Football Lettermen Announced

Walter Hodges of Conway and Hugh Mixon of Marianna, co-captains of the 1951 Hendrix football team, head the list of Warrior lettermen as announced by Coach Ivan H. Grove. Six seniors, including Hodges and Mixon, placed on the list.

Other seniors on the roll of 19 who won their black-and-orange "H" are Clint Bursleson of Gurdon, Sherman Peterson of Kensett, Jim Thwing of Conway, and Bennie Dial Wilson of Beebe.

Lettermen who may return to the Warriors for the 1952 season are Joe Bates, Little Rock; Jim Christian, Searcy; Eddie Coffman, Ft. Smith; John Coleman, Conway; Phil Dixon, Little Rock; Bill Helms, North Little Rock; David Lee, Marion, Ohio; Bill Lefler, Clinton;

Joe McDaniel, Paragould; Ed Moore, Dallas, Tex.; Bobby Sharpe, Greensboro, N. C.; Leonard White, Little Rock, and Bob Wilson, Greenbrier.

Chapel Choir Makes Fall Tour

The Hendrix Chapel Choir presented seven high school and church concerts the first of this week on the annual fall tour. Directed by V. Earle Copes, the group opened the trip Sunday night in the Pulaski Heights Methodist Church, Little Rock. Other programs were given in Forrest City, West Memphis, Marked Tree, Jonesboro, Wynne, and Searcy. The trip closed Wednesday night.

The fall tour is one of three major trips customarily scheduled by the 31-voice choir. In addition to two tours in the spring, the group makes a number of individual appearances throughout central Arkansas during the year, Mr. Copes said.

Major Production Presented

The first dramatics program in Hendrix's new auditorium was the major fall production, "Family Portrait," last Wednesday and Thursday nights.

The drama, directed by Mrs. Paul Howerton of the speech department, tells of the family of Jesus during and after the years of his ministry. Written by Lorene Coffee and William Joyce Cowen, the play was presented in early American costume to indicate the timeless and dateless spirit of the theme.

Starring George Hartje, Jr., of Conway and Patsy Bennett of North Little Rock, the play was well-received. Special stage settings were

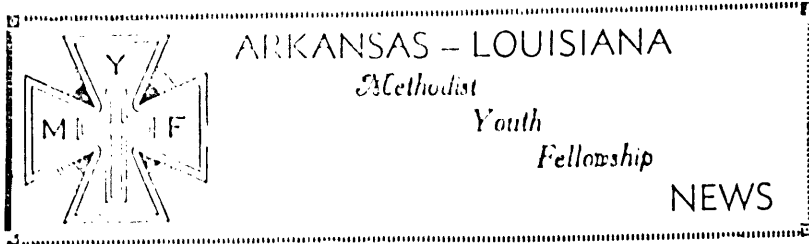
HUNDREDS OF FINE GIFTS

Selected with care by men who know what other men like best! And the Bauman name on the package insures his complete satisfaction!

This Year — Bauman's Gift Certificates

Can Ease Your Shopping Worries:
Later He Can Use It For Anything He Wants.

BAUMAN'S
MEN'S SHOP 302 MAIN ST.



MEETING OF RICEBELT INTERMEDIATE SUB-DISTRICT

The Ricebelt Intermediate Sub-District meeting at Lodges Corner on Tuesday evening, November 27, was highlighted by a very impressive film, "My Name is Pablo". The picture brought out the help and missionary work done in Mexico which led to encouragement of one Mexican boy to becoming a missionary.

Vice-president Dixie Hillman, of Lodges Corner, presided over the business meeting. It was voted to send \$10 to the Methodist Children's Home for their use at Christmas.

Sue Perryman and Sherry Kennedy, of the host church, read the scripture, and Mrs. B. E. Jessup accompanied at the piano for group singing.

Mrs. Bill Hargrove directed the recreation.

Units represented were: DeWitt; First Church, Stuttgart; Grand Avenue, Stuttgart, and Lodges Corner.

Councilors, ministers and guests presents were: Rev. Palmer Garner, Mrs. Jessup, Mrs. Hargrove, Mrs. H. Kennedy, Mrs. J. S. Berryman, Mrs. C. E. Hillman, from Lodges Corner; Rev. Mark Vaught, Mrs. A. R. Bonner, Mrs. Davis from First Church, Stuttgart; Rev. A. J. Christie, Mrs. Christie, Mrs. Paul Wergels, from Grand Avenue, Stuttgart; Mrs. Erna Johnson, DeWitt.

The January meeting will be at Humphrey.—Georgene Sorrels, Reporter.

THE POINSETT SUB-DISTRICT M. Y. F.

The Poinsett Sub-District M. Y. F. met at Tyrone on November 8 with 73 present. A very interesting program on "Thanksgiving" was presented by the Tyrone M. Y. F.

The president, Bob Rowlett, presided over the business meeting. A project, that of concreting the swimming pool at Wayland Springs Camp, is being considered.

A recreation period was held and refreshments served.—Reporter.

ALFRED WASSON SUB-DISTRICT

The Alfred Wasson Sub-District met November 19 for the monthly meeting at Gentry with Springtown serving as hosts. Neal Ward, president, presided.

The theme of the program was the M. Y. F. Fund. The group decided to set the evening offering aside for this special fund. The announcement was also made of the District Youth Rally on January 19 which will be held at Fayetteville, Central.

There were 13 churches represented. Refreshments were served by the host church.

The next meeting will be at Lincoln on December 17.—Mary Della Hennigh, Secretary.

YOUTH COUNSELORS SPEAK AT THORNTON

Frank Wynne and Robert Gray, counselors of the Methodist Youth Fellowship at Fordyce, had charge of both morning and evening services at the Thornton Methodist Church December 2nd. Mr. Gray gave a challenging message in the morning service on "How Great is Your Faith?". Mr. Wynne also gave a splendid message on "The Christian Has Wings". They were accompanied to Thornton by a 40-voice youth choir from Fordyce.

These two laymen are doing some fine work with the youth at Fordyce.

PELOUBET'S
SELECT NOTES for
1952
The world's leading commentary on the International Bible lessons.
by Wilbur M. Smith
\$2.75 AT ALL BOOK STORES

RUSSELLVILLE SUB-DISTRICT

The following churches, Atkins, Dardanelle, Dover, Pottsville, Pisgah, Russellville, and London, were represented at the Russellville Sub-District meeting December 3, at Pottsville.

Since the theme of this month is on the Evangelistic Mission, Martha Eoff, Twilla Baker, Billy Baker, and Julia Jones spoke on "I Will Uphold My Church With My Prayers, Presence, Gifts, and Service." Wesley Martin was the leader.

Vivian Hilliard, president, presided over the business meeting. She urged all youth to attend the District Youth Rally, January 19, at Conway.

The group adopted as a December project to send a gift of \$25 to the Methodist Children's Home in Little Rock.

The next meeting will be held at Dover, January 7.—Reporter.

dyce. Two of their members have entered the ministry and are going to school at Hendrix College. These two boys, Charles Hunter and George Tanner, had charge of the services at Fordyce Sunday in the absence of Bro. Averitt.—Reporter

Don't look for a ship to come in if you haven't sent one out. — Construction Digest.

M. S. M. PLANS CONVENTION

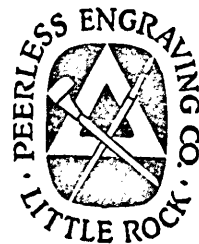
Plans for the annual three-day conference of the Arkansas Methodist Student movement to be held next spring in Fayetteville were made at a meeting of delegates from the Methodist student groups at the various Arkansas colleges in Conway Saturday afternoon, December 1. The conference will be held April 18-20 with the University of Arkansas' Wesley Foundation as host.

Dr. N. C. McPherson, pastor of St. John's Methodist Church, Memphis, Tenn., has accepted an invitation to be platform speaker at the Fayetteville conference, according to Bill Henderson, University of Arkansas, state MSM president. Dr. McPherson will make three addresses.

"The Christian and the Campus Community" was selected as the general theme of the conference. In addition to the platform speaker, the conference will feature workshops, panel discussions, devotionals and a banquet.

The delegates decided to hold one session of the conference at the Methodist assembly grounds on Mt. Sequoyah in Fayetteville. A tour of the University campus is also planned.

You do not test the resources of God until you try the impossible.—F. B. Meyer, Christian Herald



Peerless Engravers

PRINTING PLATES FOR EVERY PURPOSE

In Black and White and Color

Artists — Designers — Photo Engravers

Phone 5-8266

203 1/2 W. 4th

Little Rock, Ark.

GUS BLASS CO.

A Gift Shop
7 Stories High

Where Every Customer Must
Be Completely Satisfied

Again Blass is ready with Arkansas' Largest and Best Assortments of usual and unusual gifts. Everything for everybody at prices that will fit every budget whether limited or limitless.

★
Since 1880
THE FINEST GIFTS
OF DIAMONDS,
JEWELRY, SILVER AND WATCHES
HAVE COME FROM STIFFT'S

★
Stifft's

JEWELERS

★ 511 MAIN ST.

Pfeifers

The Sunday School Lesson

By REV. H. O. BOLIN

Lesson based on "International Sunday School Lessons; the International Bible Lessons for Christian Teaching," copyrighted 1951 by the Division of Christian Education, National Council of the Churches of Christ in the U.S.A.



WHAT IS OUR PROMISE IN JESUS CHRIST? LESSON FOR DECEMBER 23, 1951

READ THE ENTIRE LESSON FROM YOUR BIBLE:
Luke, chapters 1 and 2. Printed text: Luke 1:46-55, 2:1-7.

GOLDEN TEXT: All the promises of God find their Yes in him. That is why we utter the Amen through him, to the glory of God. (II Corinthians 1:20)

We have now come to our annual Christmas lesson. This study has been made over and over again, but it is one theme that never grows old. Christmas and Easter are the two greatest events on the church calendar.

It is wonderful to note how the Christmas spirit has continued from generation to generation down through the years. Christmas stands for goodwill, unselfish giving, service to others, and love to all. These great qualities predominate in the lives of millions of people during the Christmas season. Many scholars feel that if the Christmas spirit could continue throughout the year as it does through the Christmas season it would lead to a complete transformation of the world. The trouble is far too many people, after the season is over, drop back into the same old rut of selfishness and self-seeking, hatred, prejudice, and misunderstanding.

A Look At The Scriptures

In order to fully understand this lesson the student should read the entire assignment — the first two chapters of Luke.

Luke was one of the greatest writers of the New Testament. He began his book by calling attention to the fact that he had made every possible effort to get the truth, the whole truth, and nothing but the truth. He had access to certain written documents, and then too, he consulted many eye witnesses and obtained oral reports from them.

The Forerunner of Christ

Luke next tells of the birth of John the Baptist. His father was a priest by the name of Zacharias. Both of his parents were very old when John was born. He, like Jesus, was a child of promise. The angel Gabriel told Zacharias that John would be born. This annunciation happened in the Temple at Jerusalem while Zacharias was offering sacrifices.

John was the last of the great Hebrew prophets. Jesus said he was greater than a prophet. The Lord insisted that no greater man had ever been born than John. From his birth, John was filled with the Holy Spirit. He was a preacher of matchless power. No one has even denounced sin with greater zeal than he. His preaching stirred the whole nation.

John is spoken of as the forerunner of Christ. It is equally true that all the great prophets were forerunners of Christ. They were all preparing the way for him. It is said that in the fullness of time the Lord came. That fullness of time or creation of proper conditions and attitudes was brought about by the work of these great men. Beginning with Genesis 3:15 there are about 50 of these Old Testament prophecies concerning Christ that are quoted

in the four Gospels. Matthew who wrote chiefly for the Jews, quoted more of these than did the other writers. Space will permit us to note just a few of these, and they will be the ones that deal with the coming of Christ into the world: He was to be of the family of David, II Sam. 7:16, Psalm 89:3-4, 110:1, 132:11, Isaiah 9:6-7, 11:1; the Messiah was to be born of a virgin, Isaiah 7:14; He was to be born in Bethlehem, Micah 5:2; He would live for a time in Egypt, Hosea 11:1; He would live in Galilee, Isaiah 9:1-2; that an Elijah-like prophet would announce his coming, Isaiah 40:3-5, Malachi 3:1, 4:5; Massacre of infants at Bethlehem, Genesis 35:19-20, 48:7; Jeremiah 31:15 (compare these with Matthew 2:19). These are just a few of the many prophecies concerning the coming of the Lord into the world. A whole lesson could be taken up with these prophecies alone. Sometimes we wonder how the Jews came to have such fixed ideas of the Messiah. They got them from the prophecies in the Old Testament. They were better students of the Old Testament than we are. It is a fact, however, that they misinterpreted much that the prophets had said about the coming Messiah and thus came to reject Jesus.

Announcement of The Lord's Birth

Luke next tells of the visit of the angel Gabriel to a virgin by the name of Mary who lived in the town of Nazareth. He informed her that she was to become a mother. Since she was a virgin, she was surprised at such information. Gabriel went on to tell her that the child was to be born without a human father; that he was to be conceived by the Holy Spirit; that he was to be the Son of God.

Some stumble at the idea of the virgin birth. For the most part, these are people who are trying to take all the supernatural out of religion. This same group deny all the other miracles. Surely, all will agree that we have come upon a time when nothing less than a supernatural religion will do the job. Certainly, the natural laws are God's laws. He is in them and as far as possible works through them to attain his purposes in this world, but he is not imprisoned by them; he is not a slave to them. He is also above them and when necessary can work above them and independent of them.

Vital religion, supernatural religion is like a great rainbow, an arch. The two ends of the arch rest upon solid foundations. One is the manner of Christ's coming into the world; his virgin birth. The other is his manner of his departure; his bodily resurrection. Remove these foundations and the arch of supernatural religion falls. You have left some great teachings; a great code

of ethics, a form of godliness, but the power is gone.

So far as miracles are concerned many of us have seen miracles even in our day. The transformation of a hard sinner is a miracle of the first order. We have often heard the old saying, "Human nature remains the same" and aside from a miracle that is certainly true, but the miracle of regeneration can take place in the life of the hardest sinner. He can be made to hate the things he once loved and love the things he once hated. He is then on a new road; the straight and narrow path that leads to life everlasting.

Mary Visits Elizabeth

After the annunciation, Mary visited Elizabeth who lived some 90 miles distance from Nazareth. The meeting of these two women was one of the most glorious occasions recorded in the Bible. At the salutation of Mary, Elizabeth began to speak under inspiration. "And she spake out with a loud voice, and said, Blessed art thou among women, and blessed is the fruit of thy womb. And whence is this to me, that the mother of my Lord should come to me?" Mary responded to this with the most beautiful song of praise in all literature. This hymn of praise makes up the greater portion of our printed lesson. Note its wonderful beginning: "My soul magnifies the Lord, and my spirit rejoices in God my Saviour, for he has regarded the low estate of his handmaiden." She went on to note the fact that future generations would call her blessed. She stands out as the peerless mother of the world today. Many branches of the Church do not worship her, but all regard her with highest esteem. It has been said that God waited at least 4000 years for a woman good enough and pure enough to become the mother of his Son. Mary will always stand out as the greatest and best woman of the human race.

In many respects this great hymn of praise is also of prophecy. Note the statement: "He has put down the mighty from their thrones, and exalted those of low degree." If

there is any doubt of the fulfillment of this prophecy simply call the roll of the nations. Note the mighty dictators of yesteryears. They walked like giants across the pages of history, but what of it? They all came to naught. Where is Hitler? Where is Mussolini? Today, Stalin sits more unsteadily on his throne than we may think. He will either change his course of action or both he and his regime will go the same way as all others like him in other years. When too late, Napoleon the Great noted the mistake that he and other men like him had made down through the years. He called attention to the fact that he, Charlemagne, Caesar, and Alexander had built great empires on force. These empires had all come to naught. He noted the fact that Christ established his Kingdom on love and that his Kingdom alone would continue through the ages.

A Trip To Bethlehem

The second chapter of Luke, and the latter part of the printed text tells of a trip which Joseph and Mary made to Bethlehem. They went to register for the purpose of paying taxes. We are told that this was the time when Quirinius was governor of Syria. This man was governor from 6 to 5 B. C. This means that our calendar is a bit wrong. Year "one" was supposed to have been the date of his birth, but he was really born on 5 B. C. The makers of the calendar intended, however, that it should coincide exactly with his birth.

Birth of Christ

We have now come to the greatest event in all history—the birth of Christ. History notes this fact. It is the watershed of history. All history is divided into so many years before Christ and so many years after Christ.

We are told that the Lord was born in a stable and cradled in a manger. We look upon this with horror and harshly condemn those whom we think were responsible for it. It might help us a bit to note (Continued on page 15)

"Since 1881"
Dedicated to Rendering A
Sympathetic and Understanding
Service . . . We Care!

We have built our reputation "Since 1881" on experience and service. Our tactful handling of funeral services and our sincerity to the bereaved assures us of the people's complete faith in our institution.

Burial Protection For All The Family

Call 4-0251 for the
"Blue" Ambulance!

DRUMMOND & CO.

FUNERAL DIRECTORS

• Robert H. Green, President

★ ★ 1014 MAIN STREET

