

Will The Legislature Dare Defy Vote Of People?

At the recent general election Act Number 2, a liquor measure initiated by liquor supporters was defeated by the vote of the people. Forty-nine of the seventy-five counties returned a majority against the measure which provided as its main feature that elections on the liquor question could be held only at the time of general elections every two years. In defeating Act Number 2 the citizenship of Arkansas deliberately reserved for itself the right, under the present law, to decide when local option elections should be held. This was a surprising and bitter defeat for the wets but they asked for it.

Now, before the echoes of the election have hardly had time to die away, a Senator from a wet county that felt the sting of that defeat has introduced in the Senate a bill that proposes to do by legislative action the thing that the voters rejected at the polls. That would be democracy in reverse gear. This bill introduced would limit elections on the liquor question to the time of general elections; the thing that the voters have just finished saying they do not want.

It is ridiculous for any elected representative of the people to seriously propose legislation that would reverse the will of the people so recently expressed by their ballot. It comes in even worse grace and form when proposed by a county that was on the losing side in the recent election on the question. There were only twenty-nine counties that voted for Act Number 2.

In common parliamentary procedure, under Roberts Rules of Order, it is out of order for one who has voted on the losing side of the question to make a motion to reconsider. It is just as definitely "out of order" for one voting with the losing side in the recent election to attempt, so soon, to accomplish by other methods an objective which the voters of the state have rejected by their ballots. Such a procedure would be a brazen and even a defiant disregard of the expressed will of a majority of the people.

The one reason given for introducing the bill was that it would eliminate the expense of special local option elections. That matter was argued "profusely" before the recent election and that idea also was rejected by the people. There are no essentially new factors in the proposition and it is unthinkable that it would receive the approval either of the Legislature or the Governor.

The February Special

By order of our two Annual Conferences February 20-27 has been selected as the date to promote the February Special for Hendrix College and Ministerial Education.

Our people have become familiar with this work and recognize that we are giving support to two vital interests as we promote this Special. Hendrix College will need the active financial support of the Methodist Church in Arkansas for an indefinite period. One of the most effective ways we have for supporting the work at Hendrix is in the February Special. Dr. Matt L. Ellis, president of the college, states that the support given the college in this manner is equivalent to the interest that might be expected annually from an endowment of \$400,000.

There is no question about the value of the offering in the February Special in the training of ministerial students. This work will receive the support of our people in Arkansas.

Methodist Publications Present Advance Program

In this issue of *The Arkansas Methodist* we give special emphasis to *THE ADVANCE FOR CHRIST AND HIS CHURCH*. This is in keeping with a church-wide plan by which all of our Methodist church papers, general and local, are to give special emphasis to the Advance Program in the issue of February 17th.

It is quite proper that *THE CHRISTIAN ADVOCATE*, Methodism's official church-wide publication, should take the leadership in this Advance emphasis. It is through the courtesy of *THE CHRISTIAN ADVOCATE* and the office of Advance program that all of the conference papers have received proof sheets of the



entire issue of *THE CHRISTIAN ADVOCATE* to be published February 17th, with permission to use any part of the Advance material without giving credit.

Our readers will be interested to know something of the magnitude of this special issue of *THE CHRISTIAN ADVOCATE*. It is to have fifty-two pages printed in colors. There will be two million copies of the issue distributed to Methodist homes across the world. It required twelve freight cars to haul the two hundred seventy-five tons of paper used in this special issue. In the printing of it the presses used seven thousand, five hundred pounds of ink.

This special issue of *THE CHRISTIAN ADVOCATE* will carry such a complete presentation of the Advance program, as written by the appointed leaders of the movement and other church leaders, that it should be preserved and used as an Advance Handbook on this quadrennial program. It will be very attractive as well as useful and authoritative.

Because of limited space it is possible for the Arkansas Methodist to carry only a part of this wealth of material about the Advance program in the issue of the 17th. However, for the benefit of many of our readers who may not receive a copy of the special issue of *THE CHRISTIAN ADVOCATE*, we plan to publish in succeeding issues of the Methodist the major portion of the Advance materials carried in this special Advance issue of our general organ. We plan to do this in order that Methodism in Arkansas may be thoroughly informed regarding the general plan and purpose of this providential program of our church.

Gujarat Conference Chosen

Several alternatives faced the Advance Committees of the Little Rock and North Arkansas Conferences when they met in joint session in Little Rock, January 25, in the matter of selecting "Advance Specials" in the field of foreign missions in the Advance program. Either any local church could be free to select any "special" available in any of the missions fields throughout the world, or each conference could select a particular mission conference or area and direct its efforts in support of that field, or both conferences could select the same mission conference or project and jointly undertake to assist that area with any help that might be needed. The two Arkansas Conferences chose the latter course and by unanimous vote of the members of the two Advance Committees, and upon the recommendation of Dr. Ralph E. Diffendorfer of the Division of Foreign Missions who was present for the meeting, the Gujarat Annual Conference of India was selected.

In due course of time an adequate number of "specials" from the Gujarat Annual Conference will be made known to Methodists in Arkansas, and the local churches, groups of individuals, and individuals will be given the opportunity of selecting a special or specials to support. It is our opinion that the Advance Committees made a wise choice in selecting one particular field to receive the attention of Arkansas Methodists during this quadrennium. The advantages of this choice will become all the more apparent as the Advance Program moves along.

Martyrs In Our Time

The arrest, trial, conviction, and subsequent sentence to life imprisonment of Cardinal Mindszenty, Roman Catholic prelate in Communist-dominated Hungary, has been rightly denounced by practically all of the world's peoples outside the Russian iron curtain. Seldom in recent times has the world's opinion focused upon any single incident of this nature. This denunciation comes not only from religious leaders of all faiths throughout the world, but it has been bitterly assailed by governmental leaders as well. Now comes word, unofficially but from reliable sources, that the two handwriting experts who identified the Cardinal's handwriting of his purported confession on which the conviction was based, have fled Hungary, and have announced that their testimony was false. They further revealed that the confession was obtained from the Cardinal while he was under the influence of drugs administered by his captors. Ironically the trial was conducted in a "People's Court."

Last week it was announced that Bishop Paul N. Garber, Methodist Bishop of 13 European countries, has been indicted with fourteen other men, including several church officials, for engaging in spying activities in Bulgaria for countries outside the iron curtain. These indictments have served to arouse further the indignation of all liberty loving people.

These occurrences fit into the pattern of atheistic Communism which seems bent on crushing religion at every opportunity. Communism as it seeks to engulf the world finds its strongest opposition where organized Christendom is at work. Although the church is stronger elsewhere than in Bulgaria and Hungary, Communist leaders are probably finding that any religious activities hinder their attempts to completely dominate these countries. The persecu-

(Continued on Page 4)

There Had To Be An Advance

By BISHOP WILLIAM C. MARTIN, General Chairman,
The Advance for Christ and His Church

AN Advance in The Methodist Church was inevitable. With more than a half million new members who had been brought into the fellowship of a crusading church, with newly discovered resources, personnel and material, and with the call of the world's need loud in our ears, it was inconceivable that The Methodist Church should settle back into the routine of holding the line.

There must have been a large element of providential direction in the decision of the leaders of the church and of the General Conference that the new quadrennial plan should begin with the central emphasis upon Our Faith. Arnold Toynbee has written somewhere, "It is now obvious that for a number of generations we have been attempting to hold on to Christian practices without possessing Christian beliefs. But Christian behavior, which is not supported by Christian faith, is a wasting asset, as we have discovered to our great dismay." A nation can live for a time upon the stored-up spiritual capital of the past, but the fact has been repeatedly demonstrated that the repudiation of Christian theology is always followed by the rejection of Christian ethics.

A magazine editorial a few months ago described the Methodists as being "long on good works but short on theology." If that statement was intended to be a compliment, it missed the mark and to whatever extent it may be true we ought to be ashamed of it rather than proud of it. Not that we discount the value of good works; we need more of them. But good works which are not the logical outcome of a stalwart faith are not dependable. The only worthy living which can be counted on in all circumstances is that which comes from great believing. There is a growing conviction that the years ahead will be unusually difficult for those who have no faith.

With our faith renewed and deepened, it will be logical, and indeed inevitable, that we shall move into a more intelligent and devoted loyalty to Our Church, a more compelling conception of Our Ministry, and a more enthusiastic

commitment to Our Mission.

For Such A Day As This

A renewed faith which does not express itself in some form of activity that is seeking to put the will of God into operation would be spurious and lifeless. This outreach of con-



BISHOP W. C. MARTIN

cern is more spontaneous and natural when it relates to people with whom we have direct acquaintance than when it flows through institutional channels.

This fact is the central feature of the plan by which every local congregation of Methodists will be given an opportunity to make its own choice as to where it will take hold of this urgent business of giving to everybody the good news of the Christian gospel. The establishing

of this kind of close relationship between those who send and those who receive is an undertaking of enormous proportions in a church as large as ours. But we believe it is in line with sound Christian logic, and worth whatever effort it may require.

It ought to be fully understood that the missionary phase of the Advance will not be content with maintaining the level of giving which was reached during the preceding quadrennium; it seeks to do nothing less than to inaugurate on a wider scale than we have ever known a thoroughly personalized method of missionary support. The dawning of a new day of real peril and of unprecedented opportunity must be matched by a spirit of hope and unselfish daring.

Every Congregation Answers For Itself

A prominent and important factor in the program of the Advance is the large provision which it makes for voluntary initiative on the part of the local church. This movement is not a cast-iron pattern which seeks to force every congregation into the same mold. It is, rather, a lofty goal in terms of inner development and of outward expression which is set before each church in the belief that the pastor and his members can be relied upon to discover the best ways the resources in their keeping can be mobilized and put to work in the establishing of the kingdom of Christ.

One of the distinctive features of Pentecost—the birthday of the church—was the fact that it was the fulfillment of the prophecy that a day would come when the Spirit of God would be given to all the citizens of the new Kingdom in such a measure that "the young men shall see visions and the old men shall dream dreams", and that every Christian would have his own sure word of testimony to declare. This spirit of individual responsibility has been the genius of Christianity at its best. What has been can be again.

This is the faith, and this the purpose of the Advance for Christ and His Church.

Symbols Of The Advance

By E. HAROLD MOHN, Executive Director, The Advance for Christ and His Church

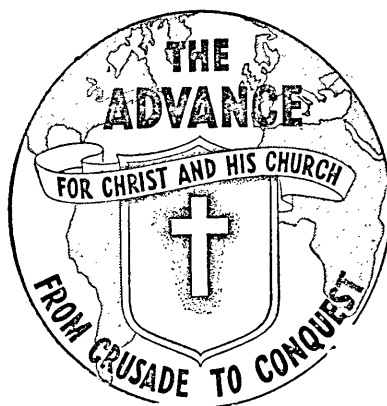
EVERY important movement is symbolic. Its symbols represent deep and driving currents that stream from human character. Mankind faces a crisis or a call to adventure and instinctively, or providentially, he is impelled to stretch toward frontiers hitherto undreamed of. Immediately there spring up, as if by magic, signposts and other markings that chart his new course.

The phrase, "The Second Mile," describes both the spirit and the fact of Methodism's second quadrennial program. The first was "The Crusade," the second is "The Advance." We now go the second mile—not to make Methodism greater but to prove our conviction that Christ's redeeming love is sufficient to capture the heart and mind of the world. We dare take this second step—not because of what we are, but because of what Christ is and can become to everyone in God's world. We do it—not because we are Methodists but because we are Christian and it is "the love of Christ that constrains us." The same redeeming love that impelled us to go the first mile now compels us to go the second.

As this phrase, "The Second Mile," describes the spirit and fact about the Advance, so "From Crusade to Conquest" tells how we move forward from something splendid which Methodism has done to something ever greater which ought to and can be done. The direction is not difficult, the urgency for increased tempo and the quality of our surrender and service must be improved. Always we are crusaders, but now we are content with nothing less than a complete conquest for Christ and His Church.

Then, there is the insignia of the Advance

as shown in the illustration.. It portrays the history and aim of Methodism's place in God's design for the redemption of the world. First is the globe, the object of God's love in sending Christ. Superimposed upon the continents of this earth is the crusader's shield, emblem of historic Christian faith and devotion, which was



the symbol of our Crusade for Christ. And now, across that shield, with its empty cross, is flung the banner of "For Christ and His Church." Above it all, in grand lettering, is the call of this hour—"The Advance."

The purpose and plan of this Advance are described just below the shield in the phrase, "From Crusade to Conquest."

This sublime history of the Christian movement and its prophecy for the future are committed to the church. And there she stands in background outline, with the redemptive love of God in her heart and his purpose for the

world in her vision. There is the Body of Christ, ever present and strong, alive and active, because his followers live in him and do his will.

This insignia will be available soon, in all sizes, for use by church papers, bulletins and other forms of publicity for which it may serve in promoting the Advance. It may be necessary to make a small charge to cover the cost of manufacturing these cuts. As soon as they are available, information about them will be supplied in The Christian Advocate and other publications.

Another bit of symbolism provides a plaque, bearing the insignia described above, with a special title at the top, "This is an Advance church." Such a plaque will be available for churches which have accepted the 33 1/3 per cent increase for World Service and, in addition, selected specials or initiated projects under the Advance program.

One other example of inspiration that moves across the church today is the new hymn composed by Rev. Garland Evans Hopkins and entitled "Advance, O Church of God" (see page 3). Inspired by the idea of the Advance for Christ and His Church, when the program was presented at Buck Hill Falls, Pa., and before it was adopted by General Conference, Dr. Hopkins wrote the words which later were set to music by R. Deane Shure.

The Advance for Christ and His Church already provides for us such directives in the form of symbolic phrases and slogans. These symbols reveal the character of Methodist people who hear and heed God's call to undertake a new world task.

THE DEVOTIONAL PAGE

REV. H. O. BOLIN, Editor

CHRIST LIVED DANGEROUSLY

"Live dangerously," was Mussolini's motto. And other dictators and usurpers have followed the rule. Attack the tiger though you know that he may rend you. The meaning is, Be audacious for your self-interest. Opposite is "safety first," which is a good rule for quiet-living people as to the affairs of this life.

But there is a Christian "live dangerously." Jesus said, "He that findeth his life shall lose it: and he that loseth his life for My sake shall find it."

Jesus lived dangerously. He drove the buyers and sellers out of the temple. He rebuked the hypocrites and the long prayers of the Pharisees. He did work of mercy on the Sabbath day contrary to tradition. He went to Jerusalem, well knowing that there His enemies were waiting to take Him.

He "became obedient unto death, even the death" upon the cross. This for our sakes and for our salvation. His cause was worthy. His love was unbounded. He died victoriously.—Free Methodist.

THE REAL DANGER

I am not afraid of atheism . . . What most I fear for Christianity today is that others will steal its ethical thunder; that in an apocalyptic generation when great things are afoot, when Christ is waiting to come again and a new world order cries out in travail to be born, even the communists will see it, by whatever name they call it, and plain men everywhere, unable to endure for themselves and their children the hell of this world's present evil, will see it, while organized Christianity, once more blind to its great occasions, will play a negative part and let others steal its game. That is the worst thing that could happen to Christianity now. Against all the lethargy of tiredness and the lure of custom and normalcy, let the church proclaim its historic message, that the future belongs to Christ.—Harry Emerson Fosdick, In The Union Signal.

HELPFUL DISCIPLINE

A loose wire gives out no musical note, but fasten the ends, and the piano, the harp or the violin is born.

Free steam drives no machine, but hamper and confine it with piston and turbine, and you have the great world of machinery made possible. The unhampered river drives no dynamos, but dam it up and you get power sufficient to light a great city.

So our lives must be disciplined, and our thoughts be kept under control if we are to be of any real service in the world.—War Cry.

A PRAYER

Grant unto all parents, O God, holy combination of wisdom, patience, firmness, and affection to rear for Thee the precious lives Thou hast given them. May their own example of trust and obedience help make their children's lives strong, happy, and useful. In Jesus' name we pray. Amen.—Evangelical Messenger.

ADVANCE, O CHURCH OF GOD

By Garland Evans Hopkins

*Advance, O Church of God, advance!
Your banner be unfurled;
A higher sovereignty unites
The Kingdoms of this world.*

*Advance, O Church of God, advance!
One World can never be
Until mankind, in search for truth,
Learns only love sets free.*

*Advance, O Church of God, advance!
We dare not longer wait
To share our Christ with all the world.
It is already late!*

*The times in which our lives are lived
Are as a chastening rod.
The world, confused and changing,
calls;
Advance, O Church of God!*

MAKING AND KEEPING COVENANTS

We have come now to the last item on the January Covenant Card. It reads as follows: "I covenant with myself and with Him to advance for Christ and His Church by taking some active part in the program of the church as directed by my pastor."

This is one of the most important items in the covenant. It is very necessary, through faith, prayer, meditation, public worship, the reading of the Bible and other good literature, to keep in close harmonious contact with God, but this is not enough. All self-development must find its way out through service to others, otherwise it becomes un-Christian and self-centered. No one can reach the point of deepest consecration unless he works as well as studies and prays. In fact the most vital faith and the most effective prayer are created by and expressed in works. Jesus called attention to the fact that there is more than one degree in prayer. He said, "Ask, and you shall receive; seek, and you shall find; knock, and it shall be opened unto you." Most church members live and die without ever getting above the first degree of prayer. Things begin to happen when an individual asks until he finds himself in harmonious contact with God and then goes out to use the power thus generated to get the job done. A man greatly desired the salvation of his neighbor. He prayed for him for years. One day in his prayer he said, "O God, touch him with thy finger." Immediately there came back the inward impression, "Thou art the finger of God." He then went out, as the finger of God, to touch his friend and the man was saved. He had simply added works to his faith; he had put feet and hands to his prayer.

James, the brother of our Lord, made some strong statements along this line. It was he who said, "What doth it profit, my brethren, though a man say he hath faith, and have not works? Can faith save him? If a brother or sister be naked, and

destitute of daily food, and one say unto them, Depart in peace, be ye warmed and filled; notwithstanding he gave them not those things which are needful to the body; what doth it profit? Even so faith, if it hath not works, is dead, being alone. Yea a man may say, Thou hast faith, and I have works: shew me thy faith without thy works, and I will shew thee my faith by my works."

So, this item of the covenant pledges the individual to take an active part in the program of the church. He who faithfully does this, as well as practicing the other means of grace, will find himself in a state of deepest consecration. Several years ago the writer had a different view as to the matter of consecration. He was taking a course on visitation revival or personal evangelism under the late Dr. Kernehan. The teacher was emphasizing the matter of sending people out to visit and win others to Christ. The writer raised this question, "Would you send them out before they were thoroughly consecrated?" The teacher's reply was, "How are you going to get them thoroughly consecrated?" The reply was at first a bit of a shock, but the writer has learned through years of experience that Dr. Kernehan is right. No one can possibly reach a state of deepest consecration without works. Christ said, "My Father worketh hitherto, and I work," and again, "I must work the works of him who sent me while it is day; for the night cometh when no man can work." If Christ is at work and consecration means to keep in close harmonious contact with him, then, we will realize his presence out where the needs are great and the labor is in progress. Some years ago a great book was written, entitled, "With Christ After the Lost." If we are really going to be with Christ, we must be after the lost.

The pledge is that each individual will assist in carrying on the program of the church. There are many

things to be done in carrying on the program of the church in addition to personal evangelism. People with good voices and musical ability are needed to sing in the choir. No church can ever do its best without a good choir. The singing of the gospel is one of the most beautiful and effective ways of getting it across to the public. If you have a talent along this line, don't bury it in a napkin. God will call you to account if you do. There are sins of omission as well as commission and one type is as damning as the other.

Another special task in the church is that of teaching. The greatest unpaid group of Christian workers in the world are the Church School teachers. Nicodemus said to Christ, "We know that thou art a teacher come from God." Christ thought of himself and his task more in terms of teaching than anything else. Teachers are dealing with immortal forces; they are building for eternity. The work they do in the way of building right character will live to bless them millions of years hence. The opportunities in this field are so great that angels might well covet the privileges that are extended to Church School teachers. People are short-sighted indeed who have to be persuaded and pressed to take a task like this. The wonder is that every church doesn't have a long list waiting of people anxious to render service in this great field of endeavor.

Then, in addition to these special tasks there are many other things to be done in and through the church. In fact these tasks are so varied that every person can find something to do in keeping with his talent. The sick are to be visited; the despondent encouraged; the weak made strong; and the faithful given more faith. All members should be ambassadors of goodwill for their church in the community. People have to be sold on the church just as they do everything else. All should be great boosters for the church. The church is the greatest business institution on earth. It carries on the Lord's business. The best advertisement for any business is a satisfied customer. Are you happy over what your church has done for you and your family? Then, radiate that spirit to others. Don't neglect the so-called little things. They count for much. Enough little bricks properly stacked together will build a great cathedral. Find your place in the church. Cooperate with your pastor in carrying on the program and the joy bells of heaven will ring in your heart and at the end of the way you will hear the commendation: "Well done good and faithful servant."—H. O. B.

The possibilities of Christian education stagger the imagination. In 1948, the year just past, 38,150 Methodist church schools reported a total enrollment of 5,655,423. If we could get all the people of the Methodist church schools together in a few places they would take up all the housing in Chicago, and Wausau, Wisconsin. It took 481,846 persons to be officers and teachers in these schools in 1948, a company not quite so large as the population of New Orleans.

The Arkansas Methodist

PUBLISHED EVERY THURSDAY
Except the Weeks of July 4 and December 25

SUBSCRIPTION PRICE, \$1.50 PER ANNUM
Retired Ministers and Wives of Deceased Ministers
of the Little Rock and North Arkansas Conferences
Complimentary

Office of Publication, 1136 Donaghey Building
LITTLE ROCK, ARKANSAS

E. T. WAYLAND } Editors and Business Managers
EWING T. WAYLAND } Assistant to Editors
ANNIE WINBURNE }

CONTRIBUTING EDITORS { H. O. Bolin Mrs. Sue M. Wayland
O. E. Goddard Forney Hutchinson

OWNED, MANAGED AND PUBLISHED BY THE
METHODIST CHURCH OF ARKANSAS

COMMISSIONERS
Little Rock Conference—J. S. M. Cannon, J. L. Hoover,
O. C. Landers, Fred W. Schwendemann, Arthur Terry,
Aubrey G. Walton, Burney Wilson.
North Arkansas Conference—John Bayliss, W. Glenn
Bruner, J. G. Moore, Joe Pearce, C. M. Reves, R. J.
Rice, J. W. Workman.

Entered as second-class matter, January 31, 1908,
at the Post Office at Little Rock, Ark., under the Act
of Congress of March 3, 1879. Acceptance for mailing
at special rate of postage provided for in section 1103,
Act of October 3, 1917, authorized September 12, 1918.



A WEEKLY MESSAGE

By FORNEY HUTCHINSON

"AUNT KIT LOCKE"

One of the saints I knew in my early ministry was "Aunt Kit Locke." "Aunt Kit" lived in Lockesburg, Arkansas, and ran a boarding house which accommodated the traveling men and others who passed that way.

When I was a young preacher, I went to Lockesburg to participate in a revival with Brother W. A. Steel. Lockesburg was Brother Steel's home. He knew everybody who lived there and they all knew and loved him.

One morning at an early service, he pledged the members of the church who were present to go apart sometime during the afternoon and pray for the meeting. It was a very innocent request and most everybody promised to accede to it. The next morning, when the service began, he called on each one for a report. When he got to "Aunt Kit," everybody was on the alert, for they knew she would be apt to recite a very interesting experience.

She said, "Willie, I 'went apart,' as you said, out in the orchard at the back of the boarding house, and knelt down to pray. I hadn't hardly got started until some devilish boys got after some hogs and ran them into the orchard. They ran through, knocked me flat on the ground and ran over me. Now, Willie, I want to do whatever you say, but I don't see why we couldn't pray in the house, and keep out of the way of the hogs and the dogs." My recollection is that most of the saints agreed with "Aunt Kit." At any rate, it was passed over with a good laugh and Brother Steel never made that request any more while I was with him.

Everybody, in and about Lockesburg, knew and loved "Aunt Kit Locke." She was the traveling man's friend. She has gone to heaven now and I'm sure she is enjoying it. She surely was one of God's children.

MARTYRS IN OUR TIME

(Continued from Page 1)

tion of these religious leaders probably will have the effect of solidifying various religious faiths in their common stand against the encroachments of Communism.

Is it not strange that while these church leaders abroad are being persecuted for righteousness sake, certain church leaders here in the States have been accused of aiding the cause of Communism?

NEWS AND NOTES ABOUT FACTS AND FOLKS

BORN to Mr. and Mrs. Lee Hummelstein of Jonesboro, a daughter, Lee Ann, on January 31. Mrs. Hummelstein is the former Miss Victoria Wiggins, daughter of Mrs. Wiggins and the late Rev. Sam B. Wiggins.

REV. FRED M. THOMPSON, pastor at Vilonia, writes: "Our first quarterly conference found us with three of our churches, Mt. Vernon, Bethlehem and Naylor paid out in full with their connectional claims including the one-third increase in Benevolences, and the other church, Oakland, had paid the Benevolences including the one-third increase. Bishop Paul E. Martin is to be at Naylor, May 22, to dedicate our new church building."

NEWS comes of the death on February 1 in Delhi of Bishop Brenton Thoburn Badley, retired head of the Delhi (India) Area of the Methodist Church, and for half a century one of America's leading authorities on Hinduism, Indian lore and history. Death came in the Delhi Hospital after a short illness due to a stroke. He was 72 years of age. Bishop Badley was born in Gonda, United Provinces, India, on May 29, 1876. He was the son of Dr. and Mrs. Brenton H. Badley, Ohioans who were pioneer American missionaries in India.

REV. FRED L. ARNOLD, Texarkana, writes: "On Monday, February 21, the city-wide Methodist Training School will begin in the First Methodist Church, 4th and State Line, at 7:00 p. m. All the Methodist Churches in the city are participating, and all others within reach are invited to attend. There will be five courses, one for teachers and workers with young children. Mrs. W. F. Bates is to be the instructor. Another course is for unmarried young people with Rev. W. Neill Hart as the instructor. A third course is for those who teach in the Church School with Rev. Glendell Jones instructor. Another course is for those who work or teach in the Adult Division with Miss Mary Sue Bethel instructor. A fifth course, Methodism Has a Message, will be taught by Dr. Gilbert T. Rowe."

THE Methodist Church has been asked to help in the resettlement of 5,000 displaced persons or approximately 2000 family units from Europe in about as many communities throughout the United States. They are part of the 205,000 D. P.'s who are to be brought to this country during the next two years. Responsibility for the Methodist share in this resettlement has been assumed by the Methodist Committee for Overseas Relief (150 Fifth Avenue, New York City), under the leadership of Bishop Titus Lowe and Dr. Gaither P. Warfield. Methodist ministers in some 40,000 communities have been asked to sponsor these persons: to find them homes, churches, schools, and jobs, and to help pay for their transportation from the port of entry to the place of settlement. The plan is to settle each family in a separate community and to have the local church make that family "at home" in the community.

JAPAN PROTESTANT CHURCH ADOPTS APOSTLES CREED

TOKYO—(RNS)—The Apostles' Creed was made the official creed of the United Church of Christ in Japan at its third General Assembly here attended by hundreds of delegates from all parts of the country.

Other highlights of the four-day sessions were declarations approving the Council of Cooperation for Christian Work in Japan, and the projected five-year evangelistic program to be undertaken by Christian missionaries in cooperation with the Foreign Missions Conference of North America.

Formally organized last February, the Council of Cooperation consists of eight representatives of the United Church, an equal number of representatives from the National Christian Education Association, and eight missionaries representing Christian groups working in Japan.

DEATH OF MRS. A. C. MILLAR

Mrs. Susie McKinnon Millar, wife of Dr. A. C. Millar, longtime Arkansas Methodist editor and former president of Hendrix College, passed away at a hospital in Dallas, Texas, on February 9.

Since Dr. Millar's death in 1940 Mrs. Millar had made her home in Mineral Springs, Arkansas, where funeral services were held on Thursday, February 11, by Rev. E. D. Galloway, district superintendent of the Prescott District, assisted by Rev. L. O. Lee, pastor of the Mineral Springs Church.

Mrs. Millar is survived by two sisters, Miss Henry McKinnon, Mineral Springs, and Mrs. Frances McKinnon Morton of San Marcos, Texas; a brother, Neal McKinnon of near Fayetteville, and several nieces and nephew. Miss Mary McSwain, missionary to Brazil, is a niece.

STUDY SHOWS RURAL PARSONAGES NEED IMPROVING

WASHINGTON, D. C.—(RNS)—Over 100,000 rural parsonages in this country need improvement, according to a study by Drew Theological Seminary, Madison, N. J.

The study, published here by the Department of Agriculture as a booklet, was based upon a detailed survey of 1,171 parsonages of 12 denominations in 47 states. It was made by Drew students with the cooperation of eight Extension Service specialists.

One fact brought out in the study is that only about one-half rural pastors have real privacy in their study. Another is that one-fourth of the parsonages need repairs, and two out of five need painting.

SEMINARY LAUNCHES TRAINING COURSE FOR MINISTERS' WIVES

ATLANTA, Ga.—(RNS)—While Emory University's prospective preachers baby-sit at home, their wives are going to school to learn to be better ministers' wives.

It's happening at the Candler School of Theology at Emory. They've launched a training course for the wives of students.

"Being the wife of a preacher is one of the world's most difficult assignments," said Dr. H. B. Trimble, Dean of the school. "And it's a full-time job."

Dr. Trimble said more than 70 per cent of the students are married. The course was initiated because the wives themselves realizing how much a preacher's wife can contribute to the effectiveness of his ministry, asked for it.

The wives study Methodism's organization of church women. They face personal problems in a course called "The Minister's Wife," led by wives of ministers from the Atlanta metropolitan area. To be very practical—as every minister's wife must be—they study such things as landscaping parsonage grounds and interior decoration on a limited budget.

Classes for the wives are held at night, so the husbands can take care of the children. That little chore in itself is good training for Papa, said Dean Trimble.

FROM CRUSADE TO CONQUEST

(Continued from Page 5)

reasonable position for a good start in the Advance for Christ and His Church.

If we do more than hold the line, if we stretch ourselves from the floor as we reach upward, we will meet the carefully surveyed missionary needs overseas and in America as follows:

Increase World Service remittances 33 1/3 per cent	\$32,000,000
Week of Dedication Offering (estimated)	6,000,000
Continue present World Service Specials	4,000,000
Total	\$42,000,000

From Crusade To Conquest

By E. HAROLD MOHN, Executive Director, The Advance for Christ and His Church

WE had to have a Crusade for Christ. Christian love and mercy required it. Now we have to have an Advance for Christ and His Church, because "Man's Disorder and God's Design" make that forward step imperative.

For every question there is an adequate answer. Those who have the answer are divinely called to give it. The Advance is Methodism's answer not only to the physical needs of humanity but to its hunger for righteousness in the midst of spiritual destitution.

"Nothing but a total Christianity will have any power to combat mass paganism and materialism," as reported at Amsterdam last summer. The "dark places among heathen races," to which we have so long referred, is now general because darkness encompasses the whole earth, including America and Europe.

The Advance is Methodism's part of God's design dealing with world-wide human disorder.

This is an advance not for numbers nor for power, not even primarily for money, but for Christ's conquest of the whole world in a day when nothing less can save it. The Advance is Methodism's acknowledgment of the fact that we are commissioned to help save the world we live in, the world that is ours, or to lose our lives trying.

More specifically, the Advance is Methodism's second-mile step from Crusade to Conquest. Inherent in the program are certain concepts that essentially are new in our church-wide strategy: "voluntary response and commitment" in terms of dedication and service; "personalized relationships" established between those ministered unto in mission fields and those who minister "not quotas but choices," "not apportionments but accepted opportunities"; and such phrases as "approved specials," "initiated projects," and "spontaneous stewardship."

In this program of Advance Methodism answers the urgency of world need with an urge of its own—the impelling spirit of Christ within us all.

This kind of Advance program is just what we have been praying for, and as Bishop Paul B. Kern puts it, "It is not handed down by any board or agency, but grows up out of the eager willingness of our Methodist people."

Evidence of that eagerness is to be found in the way we have been deluged with inquiries about the Advance. That interest has been expressed in offers of co-operation from every board and department of the church, as well as in requests for directives and in constructive suggestions. Pastors, laymen, church leaders, editors, Conference and local church groups have registered a wholesome impatience for assignments of missionary responsibility and opportunity to initiate projects.

Once again the spirit of Methodism is fanned into flame. Its warm heart is aglow with a new devotion to Christ and a new yearning for his world-field. Eagerly Methodism advances to minister more effectively than ever to its world-parish. And the joy and hope of the Lord is theirs as they fit into God's design today and for all days to come.

Somewhat in detail we present here an outline of the various phases of this second-mile effort toward conquest for Christ.

A Period of Preparation. Any successful effort requires preparation. Briefing for the Advance extends from Jan. 1 to June 30, 1949, and continues throughout the entire quadrennium.

1. Blue prints and specifications have been published in "The Second Mile" booklet, mailed last December to all pastors lay leaders, Woman's Society presidents and others. These statements constitute the foundation upon which we build. Here is the point of reference for Advance along every line.

2. "Man's Disorder and God's Design," together with the very important study guide, is the first textbook of the Advance. Pastors and laymen will find in it the preparation they need most. Its mastery may be difficult but to possess its wealth of subject matter and to be captured by its point of view is an indispensable "must" for all who would be effective in this

spiritual conquest.

This great book (four volumes in one), packed full of most comprehensive and prophetic statements about Christianity in our day, from spiritual and intellectual leaders of 151 denominations, costs Methodist pastors nothing in money.

So eager is the Advance to place this effective tool in the hands of all active pastors, that the Chicago office makes this \$5 treasure-house available to each pastor at no money cost to him. Only the investment of every pastor's mind and heart in study and prayer can justify an expenditure of such magnitude.

Here is seed for a great spiritual revival. If every one of our 21,000 pastors will cultivate the seed within his own soul, God will send the harvest. Under God's design and our dedication it may become the greatest religious awakening in history.

But that cannot happen unless and until we put all we are and have into such an advance. That price each one of us can pay. We must pay it if our crusade is to become conquest.

3. Now comes the Advance edition of The Christian Advocate. There may be found the full



DR. E. HAROLD MOHN

and complete story of Methodism's second mile effort. Its contents are designed to reach every family in the pew. This publication, made available to all laymen who choose to use it, should be kept for reference and guidance just as "The Second Mile" and the Amsterdam volume are preserved by pastors and church leaders.

Added to the regular subscription list of 400,000, Methodist pastors have requisitioned almost 2,000,000 copies for distribution on Sunday, February 27. This is Laymen's day, and the date set for opening the period of special preparation for the Week of Dedication, March 13-20. The Advance edition of The Christian Advocate may be regarded as the layman's special textbook. Let him read it, keep it, refer to it, and let the Holy Spirit use it for his help and guidance.

4. The Week of Dedication, March 13-20, primarily is spiritual preparation for personal dedication. As explained above, it begins actually on Feb. 27. Bishop Kern deals with this observance in a later issue, as Bishop Oxnam does in this issue with the subject of our teaching and preaching program.

We should note that all phases of the Advance are simultaneous and continuous. We do not pray today, worship tomorrow and work the day after. We do not move forward by a series of separate steps, but together. All phases of the Advance are concurrent and co-ordinated. All one body we use every power we possess for this Christian conquest.

5. The preaching mission, planned for next October, continues the preparation of the whole church and also finds Methodism on the march. In 70 selected cities of the United States, all of our bishops will co-operate to give pre-eminence to great mass meetings for Christ and his church. Following next Easter, this story will unfold. Plans have been made to hold two of these meetings in every area. Methodist pil-

grimage streaming into 70 cities, under the inspiration of the Holy Spirit and challenged by the preaching of bishops, pastors and laymen will quicken the whole church into action.

No idle gesture, this. It is not a "pep" meeting arranged for 70 cities. These preachers will be chosen for one single purpose, to find God's remedy for the sins of the world and to make available the redeeming power of Christ's love. The meetings are not for demonstration but for decision. They are not a crusade only but the more serious business of conquest for Christ.

6. Preparation is made complete through Bible study, prayer, worship and the fullest application of mind and heart to the program of Advance. For this purpose, in addition to "Man's Disorder and God's Design" with its guide book, there will be published 32 study booklets on the four subjects of mayor emphasis in this quadrennium.

These booklets are to be used by clergy and laity alike. During November, 1949, the entire church will study the booklet entitled, "Our Faith in God." The fact of an entire church simultaneously preaching, thinking and studying "Our Faith in God" is an event of prime spiritual significance. From November to June 1950, phases of that faith will engage Methodism.

The Program of Action. Preparation for what? If we are saved to serve, then expression must follow and grow out of impression. Information and inspiration must bear fruit in action. Works demonstrate the faith.

1. The first evidence of such works will express itself in lifting present standards. So we look to the World Service level along which we move and decide to lift it. The Methodist Church, by action of General Conference, calls upon us to increase regular World Service giving by 33 1/3 per cent over the record established during the last quadrennium. That is basic. It is the place to start if we have an honest and actual confession of our faith to make. Therefore, we begin by improving our works, by 33 1/3 per cent, to match the deepening of our faith in God, our faith in Christ, our faith in love, our faith in prayer, our faith in immortality, our faith in the Holy Spirit, and our faith in the kingdom of God.

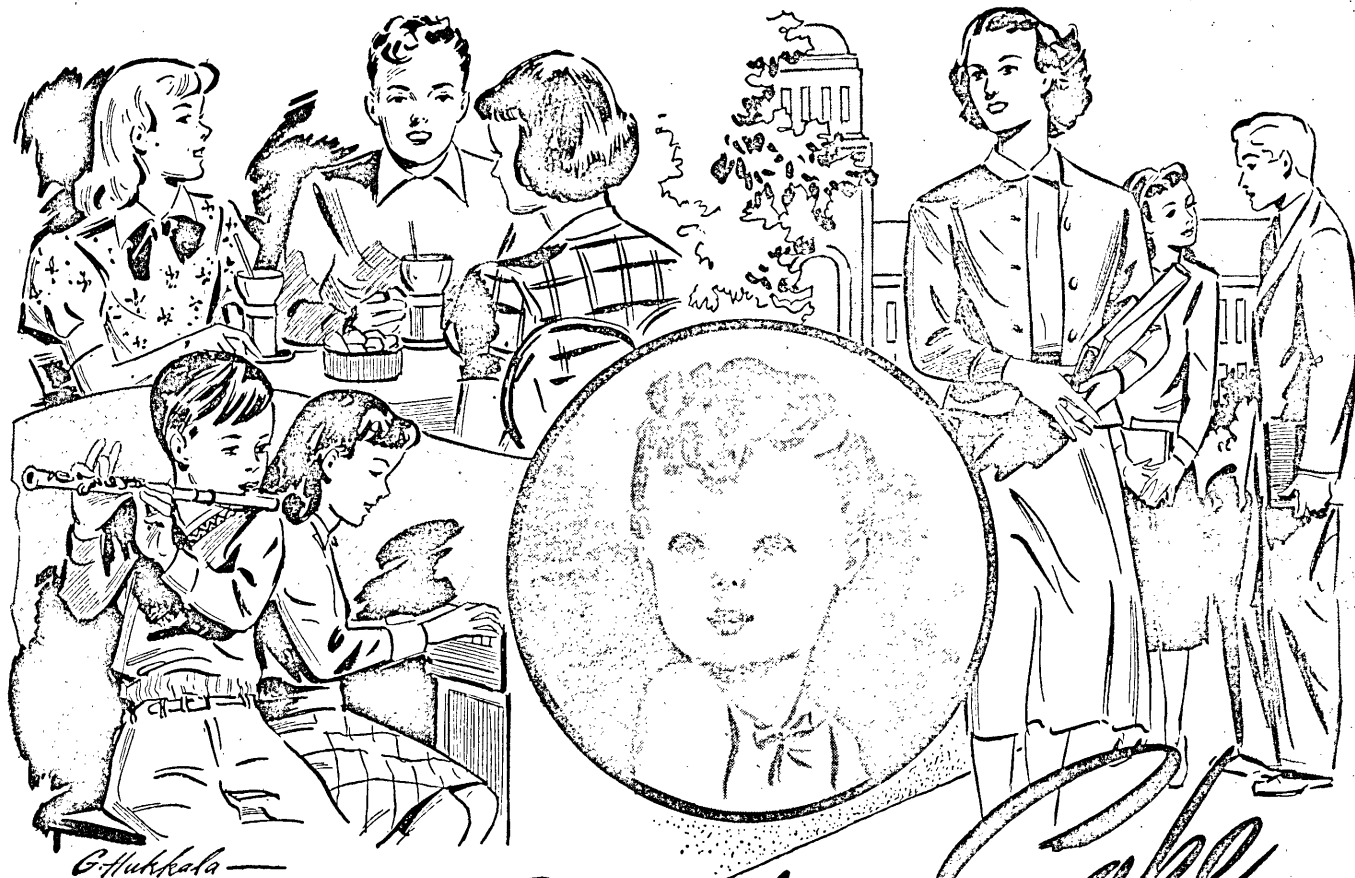
2. But an even more definite evidence of genuine faith is to be found in the voluntary offerings we bring, in the works we choose to do because of some spontaneous urge within us that proves how much we love Christ and his church.

Therefore, the action program of the Advance provides for "Specials," beyond increased World Service giving. These "Specials" we select; we have them approved and we support them out of the increasing love that has grown out of an informed mind and a dedicated spirit. This, too, is basic—basic in the sense that love supersedes law—it does more than is required.

The plan for "Specials" has been worked out carefully and consistently by Bishop Costen J. Harrell, Bishop Fred P. Corson and the committee Special projects, missionary in character, are now suggested by three participating agencies: The Division of Foreign Missions, The Division of Home Missions and Church Extension, The Methodist Committee for Overseas Relief. Here we look not at quotas but at world needs.

Of course, there can be no Advance unless we hold the line and move forward. During the last quadrennium we gave about \$50,000,000 to general benevolences, including Crusade for Christ gifts. If we hold that line, and make a reasonable advance in the field of Specials, we will do the following:

Increase World Service remittances 33 1/3 per cent	\$32,000,000
Week of Dedication Offering (estimated)	6,000,000
Continue present World Service Specials	4,000,000
Add New Advance Fund Specials	8,000,000
Total to match last quadrennium	\$50,000,000
This suggested goal is a "floor". It is a	
(Continued on Page 4)	



For their Sake

The Lord being our Helper, we commit ourselves to sobriety and a good example—

So that they, and all children and young people, may follow us, as

WE FOLLOW THE GOOD SHEPHERD

To the highlands of decency, goodness, and deep satisfactions.

COMMITMENT DAY • MARCH 6, 1949

FIRST SUNDAY IN LENT

Volunteer at once to help your pastor get ready. This is a church-wide observance mandated by the General Conference last May.

THE VALUES INVOLVED ARE TREMENDOUS

THE BOARD of TEMPERANCE

(with the cooperation of the Bishops and Boards of Methodism)

Part of THE ADVANCE—for Christ and His Church



Preaching And Teaching



By G. BROMLEY OXNAM, Bishop of New York Area

ASERMON, roughly outlined in a pastor's "study" on Saturday night, seldom strikes fire in the pulpit on Sunday morning.

No great movement, such as the preaching and teaching endeavor of the Advance for Christ and His Church, can succeed without preparation. Laymen will wish to give their ministers full co-operation during the Period of Preparation, Jan. 1 to June 30, 1949, as the minister makes himself ready for the spiritual task of "achieving a deeper understanding of and commitment to Our Faith, Our Church, Our Ministry, and Our Mission."

A 900-page book has been sent to every Methodist minister. Its title is "Man's Disorder and God's Design", and it contains the remarkable preliminary studies that formed the basis of discussion at the Assembly of the World Council of Churches, together with the Amsterdam reports and the message to the churches.

The big volume is somewhat forbidding. So is a mountain range. The book is worth reading, and the mountain worth climbing. There are far views at the summit, and the air is stimulating.

Years ago, on a New Year's day, I raced up Mount Wilson in California. The trip involved a nine-mile run and a severe climb. That is no way to profit by a mountain climb. It is better to take it more leisurely.

Some men think the shortest route to the summit is straight up the side. Experienced climbers follow the trails and listen to the guides. So guides have been found for this book; a study guide has been prepared by experienced mountaineers of the spirit.

Some theological writing is like the jungle. A machete is needed in addition to a guide. But I assure you our guides know the way to the summit, and that sunrise in the mountains will compensate for weary muscles and bated breath.

What is our faith? What is the message we are charged to carry into all the world? What is it we teach?

In an hour when dynamic ideologies struggle for the souls of men, the Christian must be able to answer such questions. Methodists have always stressed, as Jesus did, the experience of God's love, but John Wesley, who preached with such power was able to give a reason for the faith that was in him. Methodism does not wish to enter a period of theological debate, but it does desire such an understanding of and commitment to Our Faith, that it can be declared with heartchanging power.

A minister may rightly ask: What is the best use I can make of this big book and the study guide?

In this first place, the church has suggested a tough job. This book is a mountain. (I remember that some of the runners dropped out on that Mount Wilson climb years ago.) I would resolve to reach the top. I would not quit.

I think I would begin this way: I would read the second section first—that is, Volume II entitled "The Church's Witness to God's Design." This part deals with the evangelistic and missionary task of the church, and is more congenial to the Methodist mind than is Volume I which considers the nature of the church under the title "The Universal Church in God's Design."

Take up the study guide and turn to page 11. Read Prof. Georgia Harkness' description of the contents in Volume II. Then sit down and read the 218 pages of the volume, jotting down

such questions as arise in your mind. If you have trained yourself to read and retain such material at a page a minute, this means three hours and 38 minutes. Set aside five hours for the job of reading Dr. Harkness' Volume II and writing questions.

Following that, I would take up Volume I, III, and IV in that order and be guided by Prof. Clarence Tucker Craig, Dean Walter Muelder and Rev. Charles F. Boss. Thus a month will be required to go through "Man's Disorder and God's Design."

But that is just a beginning. Sub-district group should be organized, with eight meetings planned, two meetings for each volume; the first



BISHOP G. BROMLEY OXNAM

given to a presentation in 10-minute addresses of the essential thought of the writers, and the second to a critical but appreciative discussion.

After the first month, in which the minister has put in five mornings a week mastering the big book, I think he might well turn to the bibliography to make ready for the great emphases of Our Faith to begin in November with this schedule:

Nov.—Our Faith in God.
Dec.—Our Faith in Christ.
Jan.—Our Faith in the Bible.
Feb.—Our Faith in Love.
Mar.—Our Faith in Prayer.
April—Our Faith in Immortality.
May—Our Faith in the Holy Spirit.
June—Our Faith in the Kingdom of God.

Ten volumes are listed in the bibliography under each of these emphases. Eighty books! Assuming that the big volume is mastered by Mar. 1, that leaves 33 weeks before Nov. 1 when the emphasis on Our Faith in God will be made. Assuming that two volumes can be read a week that means 66 of the 80 can be covered.

Most men will have read not a few of these volumes in days gone by, certainly 14 of them. Thus the task is not impossible. Just as in mountain climbing there is a "second wind," so, too, in the intellectual climb. Experienced runners know there is always a brief period of agony before the "second wind" comes. It is at that very moment that a man can determine whether he has the stuff.

The General Conference listed two objec-

tives for the Advance. I am concerned here with Objective I: A Preaching and Teaching endeavor in which Methodists may achieve a deeper understanding of and commitment to Our Faith, Our Church, Our Ministry, and Our Mission.

When Gen. Dwight D. Eisenhower was appointed supreme allied commander, he received the following order: "You will enter the continent with the other Allied Nations, undertake operations aimed at the heart of Germany and the destruction of her armed forces." It was stated as simply as that. But how? And with what? That order had to be translated into action. It involved men, material, morale, and much more.

Our directive was stated simply too. It involves preparation, and much more.

In October, mass meetings will be held in 70 cities. They will be designed to acquaint our people with Objective I, and also affirm Our Faith. Full announcement concerning dates, speakers, subjects will be made. In some cities, the day will begin with the service of Holy Communion breakfast at which the bishop will speak on the meaning of the Incarnation. The program of the day will vary in different centers but will conclude with two great addresses in the evening on Our Faith.

So far this appears to be a minister's movement. Not at all. It will be significant only insofar as it becomes meaningful in the home and the heart. The faith must come alive in the family and in the individual.

Eight booklets are to be prepared. They will carry the titles of the emphases, beginning with our faith in God and concluding with our faith in the kingdom of God. In attractive format, large type, and interesting style, each booklet will present one of the major emphases. It is hoped that several million copies of each booklet will be published.

Every youth and adult in the church should own these booklets. They should be studied privately and in groups. Here is a chance for laymen and laywomen to meet in little groups in our homes to consider the great themes of our faith, but not for purposes of dedication. When upon the Sunday, the congregation declares, "I believe in God, the Almighty" it is believed that such affirmation will carry new meaning and evidence new conviction after the study planned for November.

The division of local church and the division of educational institutions of the Board of Education have offered full co-operation, and no doubt the emphasis of the church-school curriculum and our work in colleges and universities will strengthen the particular emphasis during each month of the study of Our Faith. All of the agencies of the church have promised similar co-operation. But basically, it is a matter of the individual giving himself to a careful study of the booklet, to discussion, but above all to personal commitment.

There is something dramatic in the thought of a world church simultaneously giving itself to a sincere study of its faith, something compelling in the realization that during November the youngest ladies in Isabella Thoburn college at Lucknow, the members of our churches in Africa, the millions in our church schools in the United States—Methodists everywhere—will study Our Faith in God, and in moments of private devotion commit themselves as did Jesus, "Not my will, but thine be done."

CHINESE BANQUET AT GRAND AVENUE CHURCH, STUTTGART

Grand Avenue Methodist Church, Stuttgart, was the scene of a gala Chinese banquet, Monday night, January 31. The banquet, which closed a five weeks' study of China and was planned in observance of National Youth Week, was attended by the youth of the church, their counsellors and their guests.

The speaker's table was centered with a large brilliantly colored

Chinese dragon, flanked on either side by low red bowls of giant jonquils. Running down the center of the banquet tables were red and yellow streamers. The programs were in the form of miniature Chinese lanterns and tiny tea bags were given as favors. Names on the place cards were written backwards, according to Chinese custom.

Miss Marilyn Beverly served as toastmaster. The invocation was by Mrs. R. J. Burkett; a solo was

sung by Miss Ovitta Sue Harris, accompanied by Mrs. Eunice McGraw. The scandal sheet was given by Miss Mary Ann Fletcher, and Nicky Hargrove and Edward Banasky, dressed in Chinese costumes, gave a clever interpretation of Chopsticks. Miss Patsy Jacobs led the group in the M. Y. F. benediction.

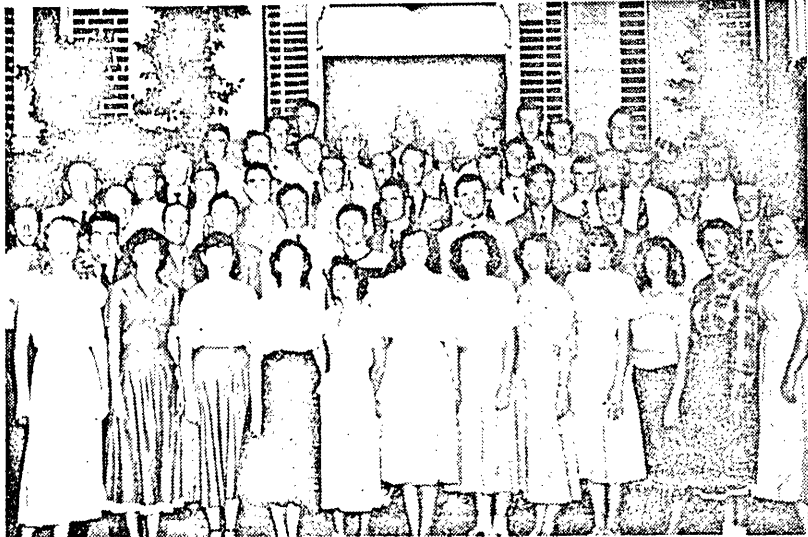
Circle No. 2 of the W. S. C. S., Mrs. Clarence Scroggins, Chairman, prepared and served the meal.—Reporter.

YOUTH FELLOWSHIP ORGANIZED

The young people of the Toler's Chapel Methodist Church of the Brush Creek community have organized a Methodist Youth Fellowship. The church is on the Leola Circuit and Rev. J. R. Diffie is pastor.

The following officers were elected: Billy Joe Orr, president; Mary Virginia Reeves, vice-president; Jasmine Higgan, secretary-treasurer; Mrs. Ruth Cunningham, adult counselor.—Reporter.

FEBRUARY SPECIAL D AND MINISTERIAL EDUA



Pre-Theolog Group at Hendrix College

FEBRUARY SPECIAL

Arkansas Methodism has labored through all the years of her history to give to her people a better ministry. This, for one thing, has caused the Methodists in Arkansas to build and maintain schools and colleges. Never was the conviction deeper than it is now that we must have a well educated ministry for the task to which the Church is called in these days.

PREPARING OUR MINISTERS

In 1936 we worked out a plan in Arkansas to help our young ministers who were finding it difficult to go to college because of lack of funds. This plan has made it possible for many young men to secure better training for the ministry.

While there were only a few ministerial students at the time the plan began, the number rose rapidly until the war came on. Now, again, Arkansas Methodism has between 75 and 100 young men in college or university preparing for the ministry. The indications are that the number will continue to increase, if we will provide the opportunity for them to secure training.

PROCEDURE FOR FEBRUARY SPECIAL

The plan for the February Special is for each district and each local church to carry out a cultivation program in the interest of Hendrix College and Ministerial Training.

The February Special is accomplishing three purposes: (1) raising funds to assist ministers in their preparation to do a better

job as ministers, (2) securing for the current budget of Hendrix College an annual amount of money to help the college meet its regular expenses, (3) bringing the college more and more into the minds of our people throughout the state.

February 20-27 has been set apart for the February Special cultivation work. The offering is to be made on Sunday, February 27, if the church has not made other plans for the offering.

This year churches will have an opportunity to carry forward the program which has so recently strengthened the future of Hendrix College. It will be necessary to continue and expand the February Special if Hendrix College is to make the contribution she ought to make toward developing a greater ministry for the two conferences in Arkansas.

HOW THE FUNDS ARE TO BE USED

The plan calls for each conference to raise a minimum of \$5,000 for Hendrix College. In addition the Little Rock Conference plans to raise a minimum of \$3,000 to use in helping ministerial students get a better education. The North Arkansas Conference plans this year to raise \$5,000 for this purpose.

The amount going to Ministerial Education is used in each conference to assist young men in college, to help men taking their conference courses of study, and to provide a scholarship by each annual conference at Southern Methodist University.

Into Methodist colleges go only 1% of the children from Methodist families, but out of Methodist colleges come more than 80% of our Methodist Ministers.

PUB

Two major goals characterize Hendrix College and Ministerial Education.

1. TO HELP ENLARGE RA the funds raised will be used for ministerial students, in what the Little Rock Conference has set this purpose. The North Arkansas Conference has set \$5,000.

2. TO HELP SUPPORT R tion of the funds raised will be used for Each Conference has set \$5,000 for this purpose.

LIBRARY

DR HENDRIX COLLEGE

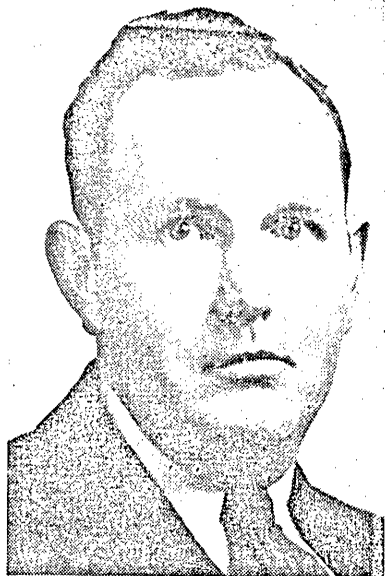
ATION. February 20 To 27

SES

he 1949 February Special for
cation:

AIN OUR MINISTRY. Part of
e direct aid to our Arkansas
lege or university they may be.
3,000 as its minimum goal for
s Conference this year has

X COLLEGE. The other por-
e current budget for Hendrix.
s its minimum goal for this



REV. J. S. UPTON
Professor of Religion



DR. MATT ELLIS
President

CHURCH NEEDS MORE MINISTERS

By Rev. J. S. Upton

The need for ministers in Arkansas Methodism is urgent. The Journals of the two conferences show that we do not have enough trained ministers for our churches. In order to supply our pulpits with pastors we are now using 153 supply ministers, and last fall at Annual Conference there were 15 charges with more than 40 churches that were left without a pastor. There are perhaps many other extension or abandoned Methodist churches also without pastors. Many supplies serve their churches at great sacrifice.

This shortage of ministers is not peculiar to Arkansas Methodism. It is a common problem of American Methodist and Protestant Christianity. The shortage of ministers can be met only as the ministers and laity of our state give serious thought, study, prayer and effort to the problems. Arkansas Methodists must and can produce an adequate ministry for our churches and for churches outside Arkansas as well.

Hendrix now has 60 ministerial students, and 35 others preparing for full time service to the church as Missionaries, Youth Workers and Directors of Religious Education. In order to meet the need of these Hendrix students five new courses were recently added to the curriculum.

Hendrix affirms anew its efforts to train for Arkansas Methodists the kind and quality of ministers that the church in Arkansas needs.

A SIGNIFICANT CONTRIBUTION

By Dr. Matt L. Ellis

Launched in 1941, the February Special has been a great experience for our church in Arkansas. Methodists have responded generously to the appeal for a larger group of trained ministers and for a stronger church college.

Ministers in Arkansas Methodism are in short supply. But that serious problem would be more serious today without the aid of the February Special, through which the church has ably assisted so many young men. More February Special funds will help a growing number of young men in preparing for their life service.

Since five-eighths of the February Special funds have come to the college, benefits to Hendrix have also been very great. A study of the record shows the significance of this cooperative statewide effort in our church.

During the years of the February Special Hendrix has benefitted by an average amount of \$12,060 per year. This is equivalent to interest and dividends at 3 per cent from an investment of more than \$400,000.

As a living endowment, the February Special is an essential part of Hendrix revenue, indispensable in our college program at Conway—a program which we are resolved to make richer, serving more effectively the young men and young women who represent the future leaders of church and state.

TREASURERS FOR FEBRUARY SPECIAL

The treasurer in each conference to whom all February Special collections should be sent is the treasurer of the Conference Board of Education.

Address your treasurer as follows:

Little Rock Conference: James H. Johnson, Worthen Bank & Trust Co, Little Rock.

North Arkansas Conference: E. W. Martin, Hendrix College, Conway.



COLLEGE

NORTH ARKANSAS CONFERENCE BOARD OF EDUCATION NOTES

By Ira A. Brumley

North Arkansas At S. M. U. Minister's Week

The North Arkansas Conference had the largest attendance of ministers attending the Minister's Week program at Southern Methodist University, February 7-10, ever to attend from the North Arkansas Conference. The following were there part or all the time, A. N. Storey, J. W. Moore, E. B. Williams, W. Henry Goodloe, Irl Bridenthal, Ethan Dodgen, H. M. Lewis, H. O. Eggensperger, G. A. Freeman, C. E. Whitten, Virgil Hanks, E. J. Holifield, R. E. Connell, Glenn F. Sanford, George Stewart, George Wayne Martin, Raymond L. Franks, Cecil R. Culver, Fred G. Roebuck, C. Wayne Banks, Robert Bearden, Jr., Martin A. Bierbaum, Elmo Thomason, E. H. Hook, James T. Randle, E. G. Kaetzl, E. C. Brown, J. William Watson, H. D. Womack, Alvin C. Murray, H. W. Jinske, Lee Cate, Kermit VanZant, San Yancey, R. O. McRae, D. L. Dykes, and Ira A. Brumley.

The response of a number of these men indicated that this was one of the best all round Minister's Week programs ever held at S. M. U. The three speakers: Dr. John Alexander Mackay of Princeton Theological Seminary; Dr. William Warren Sweet of the faculty and Bishop Gerald H. Kennedy of the Portland Area, all brought excellent messages.

Fort Smith Training School

The Fort Smith Training School is to be held March 7-11 with seven courses being offered as follows:

Understanding Children, Mrs. Waldo Wettengel; Activities for Children, Miss Mary Shipp Sanders; Christian Homemaking for Older Youth, Rev. Earle Cravens; Teaching Youth, Rev. James S. Upton; The Church Working with Young Adults, Rev. Robert Clemmons; The Book of Revelation, Dr. Wesley C. Davis; Christian Homemaking, Rev. Neill Hart.

Batesville District Training School

There is to be held a five-unit training school at First Church, Batesville, March 7-11. The following courses are to be offered:

Guiding Junior Children in Christian Growth Mrs. W. D. Murphy, Jr.; Guiding Seniors and Young People, Ira A. Brumley; Christian Beliefs (youth only), Rev. Joel Cooper; The Church Working with Young Adults, Rev. J. Clarence Wilcox; The Church Through the Centuries, Dr. W. Henry Goodloe.

Blytheville Area Training School

There is to be a four-unit training school for the Blytheville Area, March 21-25, with the following courses being offered:

Guiding Primary Children in Christian Growth Mrs. W. A. Wooten; Guiding Junior Children in Sanders; Personal Living (youth Christian Growth, Miss Mary Shipp Sanders; Personal Religious Living (youth only), Rev. George Stewart; Christian Education in the Local Church, Rev. Ethan Dodgen.

Fayetteville District Training School

Plans have been completed for a six-unit training school for the Fayetteville District to be held at Springdale, March 21-25, with the

BISHOP EDWIN H. HUGHES IN MEETING AT BENTON



BISHOP EDWIN HOLT HUGHES, nationally known churchman and gospel preacher is to be at The First Methodist Church in Benton for six days of services beginning next Sunday, February 20 and continuing through Friday evening, February 25th.

Bishop Hughes will come from Washington, D. C., and will begin the services at the 11:00 o'clock hour next Sunday. The evening services will begin at 7:30 p. m. each evening through Friday. A special service will be given the Youth of this Sub-district on Monday evening, February 21st. A cordial invitation is extended to people of neighboring churches to hear Bishop Hughes at any or all of these services.—A. J. Christie, Pastor.

following courses being offered:

Understanding Children, Mrs. Waldo Wettengel; Guiding Seniors and Young People, Rev. Paul Cardwell; Adult Work, Mrs. V. K. Chowning; Christian Education in the Local Church, Dr. B. L. Schubel; Recreational Leadership, Rev. C. Wayne Banks; Christian Beliefs, Rev. Alf A. Eason.

The Tuckerman church is carrying on a one-unit training school on Understanding Children, being taught by Mrs. Roy I. Bagley. This school is to extend over a number of weeks.

Reports coming in indicate that a good school was held at Newport, January 2 with a total of 43 credits.

We have received reports on two one-unit schools held in the Helena District: Brinkley with 13 credits and West Helena 14 credits.

Vacation Church School Clinics

Plans are being completed for a two-day Vacation School clinic for the North Arkansas Conference to be held at First Methodist Church Conway, March 4-5.

Each district has been invited to send a team of four workers to be instructed to carry back to the respective districts guidance for the four units to be used in Vacation Church Schools throughout the Conference this year. These units are as follows:

The World About Us (Kindergarten).

Outdoors in Palestine (Primary).

The People Who Lived in Jesus' Day (Junior).

O. Come Let Us Worship (Intermediate).

The churches of the Conference should feel free to select the Vacation School units they desire, but the four above listed units will be the ones emphasized this year in our Conference.

Copies of these books are now in the Board of Education office and can be had by any local church desiring them. It would be a good plan for a local church to secure the text material and get their workers to read the materials before the district or sub-district clinics are held. Any church ordering copies of these materials should send with their order a money order to cover the cost of the materials. Each of these books sell at 50 cents per copy. Any church that prefers may order these materials direct from the Methodist Publishing House, 810 Broadway, Nashville 2, Tennessee.

CHARLESTON M. Y. F. HAS PROGRAM ON CHINA

The Methodist Youth Fellowship of the Charleston Methodist Church met at 5:30 p. m. Sunday, January 30th, for the third in a series of five programs on China.

A very well arranged display of various handicrafts of China was shown to the group. In this display were vases, beautiful china dinner plates, teacups and saucers, relish dishes, teapots, tapestry, kimono, pajama sets, handkerchiefs, luncheon sets, and small samples of opal and jade and small figures of Chinese people.

Miss Lynn Carruth, who has been in charge of these programs, assisted by Miss Jackie Floyd, presented a most inspiring program.

After the program, the meeting was turned over to the president, Mary Belle Delaney. Discussions were held on a project for February's Community Service. A committee of two was appointed to work out the details.

Mrs. D. G. Hindman announced that the film, "Beyond Our Own," had been obtained and that it would be shown in the place of the regular 7:00 p. m. worship service Sunday. This film records much of the progress made in China by our missionaries.

The president urged all Intermediates to be sure and attend the Institute which is to be held here February 4th and 5th in the local Methodist Church.

Plans were revealed concerning the Chinese Style party which is to be held at the parsonage, February 13th, after Dr. Chu from Booneville has spoken to the church congregation at the 7:00 o'clock service on that date. A supper is to be served at 6:00 o'clock to the M. Y. F. members in the church basement.

The Christian Adventure Assembly was a great success. 47 Intermediates were present. Booneville 8, Paris 8, Branch 7, Cole's Chapel 3, Lavaca 4, Vesta 1 and Charleston 16. Rev. Earle Cravens taught a very interesting class on, "God in our World." Mrs. Hindman, "Beyond Our Church." Rev. Martin Bierbaum from Booneville led the recreations. The next Institute will be in May at Booneville.—Reporter.

METHODIST HOSPITAL AND BATH HOUSE

January 1949 starts off well. We had 147 admissions for a total of 1,280 days with an average daily census of 41.3 patients, babies born, 23; operations performed, 41; baths and massages totaled 704.

Our auditor's report for the year 1948 indicates our operating income and expense shows a net LOSS of \$4,089.30 as against \$8,313.83 for the previous year.

Although our operations show a loss (as was expected) it is gratifying to us at least that it was less than the previous year.

The Conference W. S. C. S. through their Division headquarters have sent \$20.00 for the Hospital Special Fund. The Willing Workers Class of Primrose Church sent a gift in memory of Louis Pellegrini; the Lila Ashby Class of Winfield Church, Little Rock, sent a gift in memory of Thomas Buzbee; Rev. and Mrs. R. E. Simpson sent a gift in memory of Mrs. H. King Wade's mother, Mrs. Phillips; Mr. H. Humphreys of Hot Springs sent a check for \$20.00 for the equipment fund; Mrs. Chester Marsh VanKleeck, a patient from Pittsburg, Penna., gave the hospital a check for \$100.00 for the Special Fund. She said, "I am on our Hospital Board at home and know something of your problems. I want to give you this check in appreciation of the attention and service I have received." To all these friends of the hospital we wish to express our sincere thanks for their thoughtfulness.—R. E. Simpson, Superintendent.

INSTITUTES ON MISSIONARY EDUCATION

Little Rock Conference

The Little Rock Planning Conference of Children's Workers meeting last September, set as one of its goals for the year, the holding of Missionary Education Institutes in each district during this conference year. Six of the seven districts have already held such institutes and they are proving to be very successful. The District Director of Children's Work and the District Secretary of Children's Work of the Woman's Society jointly planned and carried out these institutes. In each institute the general plan of Missionary Education of children was studied, then the groups were divided and specific help was given the Primary and Junior workers in their preparation for teaching the Missionary unit on China.

The following institutes have been held:

- Little Rock District, 4.
- Prescott District, 3.
- Arkadelphia District, 1.
- Camden District, 1.
- Monticello District, 1.

The districts having only one institute had that one on a district-wide basis so that most of the churches in the district were reached. The Pine Bluff District would have participated but Mrs. Russell Roth had to resign as District Director due to the serious illness of her mother, and at the time the institutes were being held, no one had been appointed to assume her place of leadership in the district, and Mrs. Rose Carithers, the assistant director was ill.

We feel that these institutes will prove of value in encouraging more churches to have additional sessions with their children, and to help the children's workers have a clearer insight into the plan for the Missionary Education of children.—Mrs. W. F. Bates.

WOMAN'S SOCIETY OF CHRISTIAN SERVICE

MRS. SUE M. WAYLAND, Editor

WOMAN'S TWOFOLD PLACE IN THE ADVANCE

By Eloise Woolover

FOR the Methodist woman the Advance for Christ and His Church means a twofold program. As a member of a local church, she will help loyally in the total church program, bearing upon her heart the responsibility of our faith, our church, our ministry, our mission. In addition, she will aid in carrying forward the advance program of the Woman's Division of Christian Service through its regular channels, strengthening the present work, bringing reinforcement for the depleted ranks, entering upon new enterprises in the interest of humanity.

The picture of opportunity at home and abroad is all-embracing enough to challenge every woman, whatever her special interest. In the home field the work is administered through six bureaus—educational, urban, medical, social welfare, town and country, and deaconess—meriting the undergirding interest and support of Christian people who take their responsibility seriously.

First of all, there is Christian training through education, requiring teachers who are well prepared and consecrated Christians. The course of study serves the needs of young people preparing for life. The schooling and training call for adequate buildings and better preparation.

Medical service in the United States, in Alaska and in Santo Domingo needs enlarging and requires more adequate housing under the Woman's Division. It needs nurses, and nurses' homes in which these young women may live while in training. For new work alone, the medical bureau is asking \$633,300.

Part of the aftermath of war is the increased number of people on the move who may become an asset or a liability in their new areas, depending on the adjustments they are able to make. Esther Halls, our homes for young girls in the cities, the Friendship Homes for Negro girls and young women in large metropolitan centers community work among families in industrial areas, co-operation with the interdenominational agencies looking after displaced persons—all these help newcomers become adjusted to their strange environments.

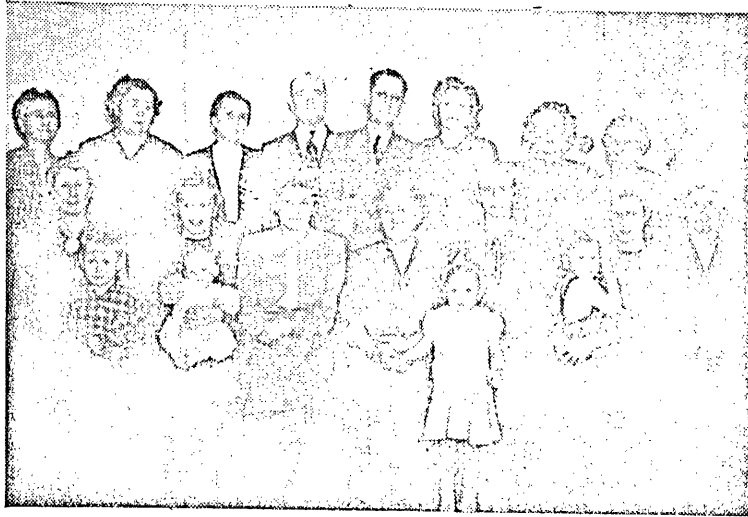
In the rural community as well as the crowded city, the church leads the way in enterprises for social betterment. And new workers are required. More than 500 commissioned workers are needed for the Advance program in the home field under the Woman's Division.

The work overseas is divided into ten fields—Africa, Burma, China, India, Japan, Korea, Malaysia, the Philippines, Europe and Latin America—and the Advance program there ranges from the primitive needs of women and children for a more abundant way of life, to the higher educational institutions which provide Christian leadership for their own lands, and touches all areas of life between.

When Dr. Frank C. Laubach, now teaching Siamese to read and write, visited mission fields in Africa, his method of teaching seemed nothing less than miraculous. Results were

(Continued to Col. 4)

Arkansas' Second Hundred Per Cent Society



A picture of the Westside Woman's Society of Christian Service, in the Camden District. This is the Second Society in the Camden District to reach the 100% goal in membership. There are only 13 women members in this small church, and there are 17 members in the society.

This picture includes (fourth in back row) the pastor, Rev. H. R. Nabors, and (fifth) the District Superintendent, Rev. Fred R. Harrison. The Camden District is making a record that should challenge our whole state in the work of the Woman's Society of Christian Service.

HIGHLIGHTS OF W. S. C. S. ANNUAL MEETING

The Annual meeting of the North Arkansas Conference Woman's Society of Christian Service will convene at the First Methodist Church in Fort Smith at 2:00 p. m., Tuesday, March 1st.

The opening session will feature the President's message, "Forward." Most of the afternoon will be spent in A Time Apart under the direction of Mrs. Oscar Evanson, Conference Secretary of Spiritual Life. The leader will be the Reverend Don Schooler of Oklahoma who has received national attention as organizer and director of the Chickasha Larger Parish and as a leader in spiritual life retreats.

The officers reports given throughout Wednesday will follow the program theme, "Forward Together." The Missionary message will be brought that morning by Miss Ling Wei-too, a Chinese student at Scarritt College. It is interesting to note that she is a former pupil of Miss Lucie Clark, a retired missionary to China, who will lead the afternoon meditation.

Wednesday evening has a youth emphasis. Miss Ling Wei-too from Scarritt College, Dr. Carpenter from National College for Christian Workers, Miss Sue Osment, a member of the Board of Missions and student at Hendrix College, and local youth groups from First Methodist Church and Goddard Memorial will present a great challenge.

Thursday morning, after hearing representatives from the Board of Christian Education, Board of Missions, Town and Country Commission, Methodist Children's Home, and The Arkansas Methodist, the meeting will conclude with the pledge and Dedication Services.—Mrs. W. F. Cooley, Chairman of the Program Committee.

"Give an account of thy stewardship."—Luke 16:2.

DR. RAKUO MATSUMOTO GUEST SPEAKER

The Reverend Rakuo Matsumoto, D. D., one of the hero-victims of the dropping of the first atomic bomb on the Japanese city of Hiroshima, will be the guest speaker at the Annual Meeting of the Woman's Society of Christian Service in Fort Smith on Tuesday evening, March 1st. Dr. Matsumoto is perhaps the leading Japanese brought to the attention of the world in John Hersey's book "Hiroshima", the graphic portrayal of what happened in that ill-fated city when the decision was made to drop the atomic missile.

Dr. Matsumoto was then, and still is, the principal of the famed Methodist Girls School in Hiroshima. That one bomb, the survey afterwards showed, killed outright 350 girls of the school, while other hundreds were maimed and injured; 149 girls lost their fathers, 144 lost their mothers, and many others lost brothers, sisters and other relatives. In the confusion that followed Mrs. Matsumoto was drowned. Dr. Matsumoto himself was madly burned, and suffered the after-effects of atomic rays. He was hospitalized for more than a year, his life despaired of for a time, but he has recovered much of his strength, and is already at work rebuilding the Methodist Girls School. In temporary buildings it houses 1600 girls and the rush for enrollment is an embarrassment to the school authorities.

Dr. Matsumoto was brought to the United States by the Methodist Church chiefly for recuperation. However he is also speaking in the interests of Christian education in Japan.

Dr. Matsumoto is a graduate of Ohio Wesleyan University, of Drew Theological Seminary, and a former fellow of Union Theological Seminary, New York City. For many years he was professor of New Testament at Aoyama Gakuin's

(Continued from Col. 1)

almost beyond belief, but now missionaries are needed to continue the teaching process.

In Rangoon, capital of Burma, there are 100,000 refugees untouched by Christian influence. Soochow Hospital in China serves as an area of 600,000 people. New developments in India and Pakistan show the increased need for highly qualified national leaders, motivated by a spirit of unselfish service.

In Japan, where in prewar days the missionary approach was mainly through institutions in large urban centers, the doors are wide open for Christian advance in the rural areas where 60 per cent of the people now live. It is imperative that more missionaries be sent at once to Korea, while the people are asking for them.

The organization and support of a deaconess movement may be the most important contribution American women can make to Poland, where lies probably the greatest opportunity for The Methodist Church in Europe. Latin America has no regular Christian college for the training of its young women leaders. All these look to the Advance for Christ and His Church.

In practical detail, the Advance program to be achieved by the local societies and guilds has four objectives:

1. Every Methodist woman a member of the Woman's Society of Christian Service which membership includes the Wesleyan Service Guild.
2. Every Methodist woman studying, giving, building, and praying for a world Christian community.
3. One thousand new missionaries, deaconesses and other full-time Christian workers to help meet the needs of the world.

4. For the first year, increased giving of 33½ per cent to the work of the Woman's Division of Christian Service for appropriations.

The specific objective for the quadrennium under the first goal means an increase of 1,000,000 members. This increased number, better informed through study of the recommended materials, more deeply consecrated to the task through the observance of the means of spiritual enrichment, should not find it too difficult to attain the last two goals.

An average of 10 new missionaries, deaconesses or other full-time Christian workers from each Conference through the quadrennium will provide the total 1,000 requested; and the increased financial giving is well within the reach of this larger membership.

theological department in Tokyo, Japan; later vice-president of Chosen Christian College, in Seoul, Korea; and more recently in Hiroshima. He is the author of many religious books, and the translator of many other Christian books from the English tongue. He is a minister of the Methodist Church of Japan.

"Finally, my brethren, be strong in the Lord, and in the power of His might."—Ephesians 6:10.

The heavens declare the glory of God, and the firmament sheweth his handywork.—Ps. 19:1.

Little Rock Conference Treasurer's Report

FOR THE PERIOD OF NOVEMBER 1st THROUGH FEBRUARY 8, 1949

Gen'l. Adm. & Juris. Conf.						Gen'l. Adm. & Juris. Conf.							
Charge	Church	Bishops Fund	Conference Claimants	Benevolences	World Service (4th Sun. Off.)	Exp. Fund	Charge	Church	Bishops Fund	Conference Claimants	Benevolences	World Service (4th Sun. Off.)	Exp. Fund
ARKADELPHIA DISTRICT													
ARKADELPHIA STATION		\$ 52.50	\$ 420.00	\$ 1218.75	\$	\$	Junction City		8.94	37.76	35.00	23.50	4.00
ARKADELPHIA CIRCUIT							KINGSLAND CIRCUIT						1.25
Hart's Chapel		1.50	5.00			3.00	Kingsland		6.49	41.50	37.50	43.00	
Hollywood		5.00	20.00	22.00		6.00	LOUANN CIRCUIT						1.00
Mt. Zion			5.00			1.00	Liberty		1.50	11.50	7.00		2.00
Smyrna		3.00	10.00			3.00	Silver Hill		2.00	15.00	14.00		2.00
Total		\$ 9.50	\$ 40.00	\$ 22.00	\$	\$ 13.00	Louann		5.50	31.50	21.00		3.00
BENTON STATION		\$ 21.00	\$ 169.00	\$ 536.00	\$	\$ 17.00	Total		\$ 9.00	\$ 58.00	\$ 42.00	\$	\$ 6.00
BENTON CIRCUIT							FIRST CHURCH, MAGNOLIA		\$ 65.63	\$ 525.00	\$ 1312.50	\$	\$ 71.87
Martindale					4.10		JACKSON STREET, MAGNOLIA		\$ 37.00	\$ 136.50	9.00	200.00	18.00
BISMARCK CIRCUIT							NORPHLET CIRCUIT						2.00
Bismark		4.50	20.00	14.50	2.00		Ebenezer		1.00	5.00	10.00		5.00
CARTHAGE-TULIP							Norphlet		10.00	62.00	55.00		3.00
Cypress		3.00			1.00		Quinn		1.00	7.00	15.00		10.00
Mt. Zion		1.00			10.00	1.00	Total		\$ 12.00	\$ 74.00	\$ 80.00	\$	\$ 10.00
Total		\$ 4.00	\$	\$	\$ 11.00	\$ 1.00	MARYSVILLE CIRCUIT						\$ 3.54
COUCHWOOD CIRCUIT							Bethel		\$ 3.15	\$ 11.43	\$	\$	\$ 10.00
Butterfield		\$ 2.00	\$ 11.00	\$ 17.00	\$	\$ 4.00	Friendship			5.00	20.00		10.00
Magnet Cove		3.00	17.00	9.00		5.00	Fredonia		9.00	5.00			10.00
Rockport		6.57	18.75	15.00		6.25	Marysville		9.00	25.00		16.00	23.54
Total		\$ 11.57	\$ 46.75	\$ 26.00	\$ 15.00	\$ 15.25	Total		\$ 21.15	\$ 46.43	\$ 20.00	\$ 16.00	
DALARK CIRCUIT							PARKERS' CHAPEL CT.						\$ 7.50
Bethlehem		\$ 3.30	\$ 21.00	\$ 46.00	\$	\$ 3.00	Parkers' Chapel		\$ 26.25	\$ 82.50	\$ 75.00	\$	\$ 12.50
Manchester		7.00	15.00		25.00	6.00	Pleasant Grove		9.00	34.50	75.00		20.00
Manning		2.00	10.00		10.00		Total		\$ 35.25	\$ 117.00	\$ 150.00	\$	\$ 15.00
Total		\$ 12.30	\$ 46.00	\$ 46.00	\$ 35.00	\$ 9.00	SMACKOVER		\$ 15.00	\$ 139.98	\$ 139.98	\$ 15.00	
FRIENDSHIP CIRCUIT							STRONG CIRCUIT						8.00
Friendship		\$ 1.50	\$ 6.50	\$	\$ 20.50	\$	Strong		13.00				5.00
L'Eau Frais		2.00	8.00	21.00			Rhodes Chapel		5.00	29.00	46.00		13.00
Midway		1.50	7.00		17.00		Union		4.00	10.00			
Social Hill		1.50	5.00		14.50		Total		\$ 22.00	\$ 39.00	\$ 46.00	\$	\$
Total		\$ 6.50	\$ 26.50	\$ 21.00	\$ 52.00	\$ 6.00	THORNTON CIRCUIT						\$ 2.00
HOLLY SPRINGS CIRCUIT		\$ 7.13	\$ 30.75	\$	\$ 42.00	\$ 6.00	Chambersville		\$ 1.50	\$ 12.50	\$ 12.50	\$	\$
HOT SPRINGS CIRCUIT							Stony Point		1.00	4.00		8.00	2.00
Bethlehem		\$ 2.00	\$ 5.00	\$	\$	\$ 4.00	Temperance Hill		1.50	12.50	12.50	2.50	2.00
HOT SPRINGS CHURCHES							Thornton		4.00	25.00	11.75	11.75	4.00
First Church		\$ 26.25	\$ 210.00	\$ 633.49	\$ 133.32	\$ 31.23	Total		\$ 8.00	\$ 54.00	\$ 36.75	\$ 22.25	\$
Grand Avenue		21.88		150.00		9.38	VILLAGE CT.						\$ 1.00
Oaklawn		33.00	225.00	272.00		16.00	Ebenezer		\$	\$ 12.50	\$ 10.00	\$	\$ 3.00
Pullman Heights		19.50	107.00	117.50		19.00	Village		17.50	110.00	40.00		
JONES MILLS-PINEY GROVE							Total		\$ 17.50	\$ 122.50	\$ 50.00	\$	\$ 4.00
Shorewood Community		2.10		10.00			WALDO CIRCUIT						24.98
Piney Grove		2.20	9.00	12.00		5.00	Waldo		29.85	202.50	287.48		
Total		\$ 4.30	\$ 9.00	\$ 22.00	\$	\$ 5.00	Williesville			39.90		12.16	
LEOLA CIRCUIT							Total		\$ 29.85	\$ 242.40	\$ 287.48	\$ 12.16	\$ 24.98
Hunters Chapel		\$ 2.00	\$ 3.00	\$ 10.00	\$	\$	District Totals		\$609.90	\$3596.64	\$ 5901.09	\$594.78	\$520.45
Leola			10.00	65.00			MINISTERIAL SUSTENTATION FUND, PASTOR—Bearden \$8.50, Fairview \$12.00, Vantrease \$10.00, Thornton Ct. \$6.00, First Church, Magnolia \$10.00—						\$ 46.50
Total		\$ 2.00	\$ 13.00	\$ 75.00	\$	\$ 37.50	Total						
FIRST CHURCH-MALVERN		\$ 54.70	\$ 437.50	\$ 1156.00	\$	\$ 15.00	MINISTERIAL SUSTENTATION FUND, CHURCH—Bearden \$8.50, First Church, Camden \$40.75, Fairview-Timothy \$7.50, Missouri \$1.00, Silver Springs \$1.56, Chidester \$12.00, First Church, El Dorado \$45.00, Dumas Memorial \$5.00, Calion \$2.19, Fordyce \$24.00, Hampton \$3.75, Harrell \$3.15, Buena Vista \$2.00, Harmony Grove \$2.25, Huttig \$11.00, Junction City \$6.56, Liberty \$1.00, Silver Hill \$2.00, Louann \$3.00, First Church, Magnolia \$37.50, Jackson Street \$10.50, Ebenezer \$1.50, Norphlet \$11.00, Quinn \$2.00, Bethel \$1.88, Fredonia \$5.00, Marysville \$5.00, Parker's Chapel \$15.00, Pleasant Grove \$10.00, Strong \$7.00, Union \$3.00, Stony Point \$1.00, Thornton \$5.00, Village \$10.00, Waldo \$16.88, Williesville \$5.00, Rhodes Chapel \$3.00—Total					\$332.47	
KEITH MEMORIAL-MALVERN		22.30	128.00	94.00			AREA FUND—Emerson \$3.00, Fredonia \$5.00, Parker's Chapel \$5.00, Village \$2.00—Total						\$ 15.00
PRINCETON CIRCUIT							WORLD COMMUNION OFFERING—Westside \$11.00—Total						\$ 11.00
Macedonia				17.25			GRAND DISTRICT TOTAL						\$11,627.83
Providence		1.00	6.00	1.00		2.00	LITTLE ROCK DISTRICT						
Waverly		1.00	6.00	18.50		2.00	AUSTIN CIRCUIT						
Zion		1.00	5.00	9.50		2.00	Austin		\$ 3.00	\$ 10.00	\$ 12.00	\$	\$
Princeton		3.00	13.00	18.00		4.00	Concord			9.00	14.00	25.00	4.00
Total		\$ 6.00	\$ 30.00	\$ 64.25	\$	\$ 10.00	Mt. Tabor		2.25	13.50		18.00	2.00
SPARKMAN-SARDIS							Symrna		1.00	3.00	5.00		1.00
Sardis		\$ 4.74	\$ 37.74	\$ 78.24	\$	\$	South Bend			23.00		5.00	
Sparkman		22.50	67.00	62.50		17.50	Total		\$ 15.25	\$ 63.50	\$ 42.00	\$ 23.00	\$ 7.00
Total		\$ 27.24	\$ 104.74	\$ 140.74	\$	\$ 17.50	BRYANT CIRCUIT						
TRASKWOOD CIRCUIT							Bryant		\$ 6.34	\$ 22.50	\$ 39.90	\$	\$ 5.42
Congo		\$ 2.00	\$ 11.00	\$	\$ 29.00	\$ 3.00	Mt. Carmel		5.00	27.00	45.00		3.00
Ebenezer		4.00			10.00	6.00	Salem		6.50	33.75	56.25		16.62
Point Cedar		2.00	6.00		13.00	2.00	Total		\$ 17.84	\$ 83.25	\$ 141.15	\$	\$ 25.04
Total		\$ 8.00	\$ 17.00	\$	\$ 52.00	\$ 11.00	CARLISLE STATION		\$ 16.41	\$ 112.50	\$ 185.00	\$ 49.50	\$ 6.25
District Totals		\$356.17	\$2185.24	\$ 4609.23	\$346.42	\$236.86	DES ARC-NEW BETHEL					23.90	
MINISTERIAL SUSTENTATION FUND, PASTOR—Benton \$12.00, First Church, Malvern \$16.25, Pullman Heights \$22.50, Tigert Memorial \$10.00, Sparkman-Sardis \$5.25—Total						\$ 66.00	Des Arc						
MINISTERIAL SUSTENTATION FUND, CHURCH—Arkadelphia Station \$30.00, Benton \$12.00, Cypress \$2.00, Tulip \$2.00, Bethlehem \$2.00, Manchester \$4.15, Manning \$3.00, Holly Springs Ct. \$6.25, First Church, Hot Springs \$15.00, Grand Avenue \$12.50, Oaklawn \$19.00, Pullman Heights \$11.50, Piney Grove \$2.00, First Church, Malvern \$31.25, Keith Memorial \$12.80, Sardis \$3.24, Sparkman \$12.50—Total						\$181.19	DeValls Bluff-P. Lake					3.00	1.25
AREA FUND—Arkadelphia Station \$15.00, Benton \$4.00, Grand Avenue \$4.37, Pullman Heights \$7.00, Piney Grove \$1.00, First Church, Malvern \$9.38, Keith Memorial \$2.00—Total						\$ 42.75	DeValls Bluff		1.75	8.25	12.50		
WORLD COMMUNION OFFERING—Benton Station						\$ 31.00	DOUGLASSVILLE		7.68	54.00	50.00		
OVERSEAS RELIEF—Grand Avenue \$25.00, Oaklawn \$31.00—Total						\$ 56.00	ENGLAND		19.38	157.50	312.50		31.25
GRAND DISTRICT TOTAL						\$8110.86	GEYER SPRINGS		13.57	82.50	125.00		6.25
CAMDEN DISTRICT													
BEARDEN		\$ 15.00	\$ 101.50	\$	\$ 67.50	\$ 9.00	HICKORY PLAINS CT.					5.00	
FIRST CHURCH-CAMDEN		71.25	568.75	2000.00		96.75	Hickory Plains						
Fairview		8.80	60.00		66.68	4.80	KEO-TOMBERLIN-HUMNOKE						
Timothy		4.50	23.50	31.50		3.00	Humnoke			38.00	40.00		
Total		\$ 13.30	\$ 83.50	\$ 31.50	\$ 66.68	\$ 7.80	Keo		5.00	30.00	48.75		
CHIDESTER CIRCUIT							Total		\$ 5.00	\$ 68.00	\$ 88.75	\$	\$
Missouri		\$ 2.00	\$	\$	\$	\$ 2.00	LITTLE ROCK CHURCHES						\$ 62.50
Silver Springs		2.50	18.75			2.00	ASBURY						
Rushing Memorial		21.00	73.00			9.00	FIRST CHURCH		\$ 65.63	\$ 140.00	\$	\$	
Total		\$ 25.50	\$ 91.75	\$	\$	\$ 13.00	FOREST PARK			446.25	1800.00		
CENTENNIAL MEMORIAL CT.							HENDERSON		38.00	105.00	161.00		22.00
Centennial		\$	\$	\$	\$ 7.66	\$	HUNTER MEMORIAL		10.00	78.75	203.13	31.25	5.50
DUMAS MEMORIAL-CALION							OAK FOREST		36.09	75.00		62.50	3.12
Calion		3.83	17.50	21.25		5.88	PULASKI HEIGHTS		26.25	210.00	750.00		24.99
Dumas Memorial		8.76	30.00	24.38		6.62	SCOTT STREET				300.00		
Total		\$ 12.59	\$ 47.50	\$ 45.63	\$	\$ 12.50	28th STREET		8.00	100.00			5.00
FIRST CHURCH, EL DORADO		\$ 78.75	\$ 630.00	\$ 1000.00	\$	\$ 96.88	WINFIELD MEMORIAL		72.20	176.00	2812.50		43.75
VANTREASE MEMORIAL CT.							LONOKE-EAGLE						
Bethel				11.00			Eagle		5.00	33.00	50.00		5.00
Vantrease		12.00	118.98	102.75			Lonoke		34.40	60.00	68.75		23.00
Wesley Chapel			14.00	16.00			Total		\$ 39.40	\$ 93.00	\$ 118.75	\$	\$ 28.00
Total		\$ 12.00	\$ 132.98	\$ 129.75	\$	\$	MABELVALE		\$ 11.72	\$ 57.30	\$ 72.92	\$	\$
EMERSON CIRCUIT							MOUNTAIN VIEW		5.00				
Atlanta		\$ 3.00	\$ 4.00	\$	\$ 9.00	\$ 2.00	PRIMROSE CHAPEL						1.00
Christie Chapel		3.00	4.50		5.00	2.00	Bethel		1.50	3.50			7.75
Emerson		3.00		2.00		4.00	Primrose Chapel		15.00	101.00	126.50	\$	\$ 8.75
Ware's Chapel		2.00	3.00			2.00	Total		\$ 16.50	\$ 104.50	\$ 126.50	\$	\$
Total		\$ 11.00	\$ 11.50	\$ 2.00	\$ 14.00	\$ 10.00	District Totals		\$425.67	\$2215.30	\$ 7301.70	\$248.15	\$280.65
FORDYCE		\$ 42.00	\$ 126.00	\$ 300.00	\$	\$ 43.28	MINISTERIAL SUSTENTATION FUND, PASTOR—England \$11.50, Oak Forest \$20.63—Total						\$ 32.13
HAMPTON-HARRELL CT.							MINISTERIAL SUSTENTATION FUND, CHURCH—Bryant \$2.58, Mt. Carmel \$3.00, Salem \$3.75, Carlisle \$9.38, England \$11.50, Geyer Springs \$7.50, Keo \$3.00, Asbury \$37.50, Henderson \$24.00, Hunter Memorial \$5.50, Oak Forest \$20.63, Pulaski Heights \$15.00, 28th Street \$9.00, Winfield \$22.00, Eagle \$3.00, Lonoke \$20.00, Bethel \$1.00, Primrose Chapel \$7.75—Total						\$208.09
Hampton		6.50	41.25		9.14	6.25	PHILANDER SMITH COLLEGE—First Church, Little Rock \$212.58, Winfield \$18.53—Total						\$ 34.22
Harrell		5.95	14.85	20.00		5.85	METHODIST STUDENT DAY—Winfield Memorial \$34.22—Total						\$10,975.02
Total		\$ 12.45	\$ 56.10	\$ 20.00	\$ 9.14	\$ 12.10	GRAND DISTRICT TOTAL						
HARMONY GROVE CT.							(Continued on Page 13)						
Buena Vista		\$ 3.00	\$ 14.00	\$	\$ 20.00	\$ 2.00							
Harmony Grove		3.75	16.50	21.00		2.50							
Lakeside		1.50	5.50		11.00	2.00							

LITTLE ROCK CONFERENCE TREASURER'S REPORT

(Continued from Page 12)

LITTLE ROCK CONFERENCE TREASURER'S REPORT							Gen'l. Adm. & Juris. Conf. Fund				
(Continued from Page 12)											
Charge	Church	Bishops Fund	Conference Claimants	Benevo- lences	World Service (4th Sun. Off.)	Gen'l. Adm. & Juris. Conf. Fund	Bishops Fund	Conference Claimants	Benevo- lences	World Service (4th Sun. Off.)	Gen'l. Adm. & Juris. Conf. Fund
MONTICELLO DISTRICT											
CROSSETT			\$ 394.00	\$							
DERMOTT		13.20	90.00								
DREW CIRCUIT											
Green Hill		1.00									
Lacey		1.50	5.50	10.00							
Prairie Chapel		3.00	13.00								
Valley		1.00									
Total		6.50	18.50	10.00							
DUMAS		22.33	175.00	375.00							
EUDORA		9.60	71.50								
FOUNTAIN HILL CIRCUIT											
Extra		1.60	8.28	8.28							
Fountain Hill		.34	7.09	10.00							
Hickory Grove		1.00	4.00	6.00							
Pine Hill				2.00							
Waller's Chapel		3.00	15.06	20.53							
Zion			2.50	3.34							
Total		5.94	36.93	50.15							
HAMBURG-SNYDER											
Hamburg		44.00	350.00	500.00							
Snyder				14.67							
Total		44.00	350.00	514.67							
HERMITAGE CT.											
Hermitage		5.00	20.00		25.00	2.00					
Ingalls		1.00	10.00		10.00	1.00					
Jersey		4.00	10.00		12.00	1.00					
Martins Chapel		2.00	10.00		10.00	2.00					
Palestine		2.00	10.00	10.00		1.00					
Sardis			5.00		5.00						
Total		14.00	65.00	10.00	62.00	7.00					
LAKE VILLAGE		11.68	93.34	133.34		6.68					
MT. TABOR		2.00	9.00	9.00	12.50						
McGEHEE		39.00	157.50		375.00	34.00					
MONTICELLO		18.74	157.50	400.00		21.25					
NEW EDINBURG CT.											
Good Hope		3.00	4.00		22.00	1.00					
Hebron		2.00	9.00		14.00						
New Edinburg		8.00	24.00		24.00	1.00					
Total		13.00	37.00		60.00	2.00					
PARKDALE		3.47	88.00		135.00	3.00					
PORTLAND-MONTROSE											
Montrose		7.00	45.00	38.79	10.21	8.00					
Portland		10.00	68.00	100.00		7.00					
Total		17.00	113.00	138.79	10.21	15.00					
TILLAR-WINCHESTER											
Newton's Chapel		2.16	14.92	33.08		2.16					
Selma		1.60	10.12	12.24		1.60					
Tillar		5.00	28.00	25.00		5.00					
Winchester		2.16	14.92	33.08		2.16					
Total		10.92	67.96	103.40		10.92					
WARREN		18.42	147.21	400.02		21.21					
WATSON-KELSO											
Kelso		4.00	18.00		28.80	1.50					
WILMAR CT.											
Wilmar		7.00	41.00		28.75	2.00					
WILMOT-MILLERS CHAPEL											
Millers Chapel		.75	3.25		7.75						
District Totals		\$261.55	\$2133.69	\$2144.37	\$720.01	\$176.59					
MINISTERIAL SUSTENTATION FUND, PASTOR—Curtis Williams (1948) \$40.00, Ft. Hill \$5.00, Hamburg \$25.00, Ingalls \$1.00, Palestine \$1.00, Sardis \$1.00, McGehee \$9.00, Monticello \$15.00, Parkdale \$8.00, Portland \$9.00, Wilmar \$4.00, Millers Chapel .50c—Total \$118.50											
MINISTERIAL SUSTENTATION FUND, CHURCH—Dumas \$12.45, Extra \$8.00, Ft. Hill \$2.85, Hickory Grove .50c, Wallers Chapel \$2.00, Hamburg \$25.00, Hermitage \$2.00, Ingalls \$1.00, Jersey \$2.00, Martin's Chapel \$4.00, Palestine \$1.00, Sardis \$1.00, Lake Village \$6.68, McGehee \$22.50, Good Hope \$2.00, New Edinburg \$4.00, Parkdale \$8.00, Montrose \$4.00, Portland \$9.00, Newton's Chapel \$1.60, Selma \$1.08, Tillar \$4.00, Winchester \$1.60, Warren \$20.82, Wilmar \$4.00, Millers Chapel .50c, Monticello \$11.55—Total \$155.93											
GRAND DISTRICT TOTAL \$5,710.64											
PINE BLUFF DISTRICT											
ALMYRA		19.00	112.00	125.00		20.00					
ALTHEIMER-WABBASEKA											
Altheimer		14.76	43.38	11.25	88.50						
Wabbaseka		5.90	40.50	62.50		2.75					
Total		20.66	83.88	73.75	88.50	2.75					
BAYOU METO CT.											
Bayou Meto			49.00	51.00		6.00					
Lodges Corner			49.00		51.00	6.00					
Total			98.00	51.00	51.00	12.00					
DEWITT		24.61	196.87	293.75	25.00	37.50					
GOOD FAITH		10.00	57.00		23.20						
GRADY-GOULD											
Gould		8.00	25.00	30.00	8.00	4.00					
Grady		14.00	50.00	100.00		8.00					
Total		22.00	75.00	130.00	8.00	12.00					
HUMPHREY											
Prairie Union		2.50	20.00	20.00	7.25	3.15					
PINE BLUFF CHURCHES											
CARR MEMORIAL			100.00		150.00						
FIRST CHURCH		36.09	88.75	1109.36		51.56					
HAWLEY MEMORIAL			89.00								
LAKESIDE					429.15						
PINE BLUFF CIRCUIT											
Faith		1.25	3.44	6.38		.74					
Mt. Carmel		4.00			20.00	1.00					
Sulphur Springs		2.00	12.00	10.00							
Total		7.25	15.44	16.38	20.00	1.74					
PLAINVIEW COMMUNITY CHURCH											
RISON		13.00	82.50								
ROE CIRCUIT											
Hunter's Chapel		1.52	9.66	4.80							
Roe		3.09	19.68								
Shiloh		1.08	7.00	15.00							
Ulm		1.87	10.73		7.46						
Total		7.56	47.07	19.80	7.46						
ROWELL CT.											
Union					1.00						
SHERIDAN-NEW HOPE											
New Hope		2.00	15.00			1.00					
SHERRILL-TUCKER											
Sherrill		16.00	45.00	102.00		12.00					
STAR CITY CT.											
Cornersville		3.00	10.00	10.00		5.00					
Star City		28.75	197.00	166.00		12.00					
Total		31.75	207.00	176.00		17.00					
FIRST CHURCH, STUTTGART		24.59	196.87	359.37		18.75					
GRAND AVENUE, STUTTGART		49.00	200.00	750.00		50.00					
SWAN LAKE		5.25	30.00		12.86	10.00					
WHITE-HALL & REDFIELD											
Redfield					3.00						
District Totals		\$292.46	\$1767.38	\$3226.41	\$864.65	\$249.45					
MINISTERIAL SUSTENTATION FUND, PASTOR—Almyra \$11.00, Altheimer \$9.00, Good Faith \$6.00, New Hope \$1.00, Cornersville \$2.00, Swan Lake \$3.00—Total \$32.00											
MINISTERIAL SUSTENTATION FUND, CHURCH—Almyra \$11.00, Altheimer \$8.44, Wabbaseka \$6.75, Bayou Meto \$5.00, Lodges Corner \$5.00, DeWitt \$28.12,											
CHARGE CHURCH											
Gould \$5.00, Grady \$9.00, New Hope \$1.00, Cornersville \$2.00, Star City \$18.75, First Church, Stuttgart \$14.06, Grand Avenue, Stuttgart \$28.00, Swan Lake \$3.00, First Church, Pine Bluff \$20.62—Total \$165.74											
AREA FUND—Almyra \$2.00, Altheimer \$2.00, Bayou Meto \$1.00, Lodges Corner \$1.00, DeWitt \$5.00, Gould \$1.00, Prairie Union .65c, Cornersville \$2.00, Star City \$2.50, First Church, Stuttgart \$2.50, Grand Avenue, Stuttgart \$3.00, Swan Lake \$3.00, First Church, Pine Bluff \$5.62, Faith .64c—Total \$34.91											
WORLD COMMUNION OFFERING—Good Faith \$3.91, First Church, Stuttgart \$26.55—Total \$30.46											
GRAND DISTRICT TOTAL \$3,334.46											
PRESOTT DISTRICT											
BINGEN CT.											
Avery Chapel		1.25	5.50		10.00	10.50					
Biggs Chapel				5.00							
Bingen		2.00	10.00	35.00							
Doyle					7.00						
Friendship					4.00						
Pump Springs				5.00							
Sweet Home			5.00	5.00	15.00						
Total		3.25	20.50	50.00	36.00	10.50					
CENTER POINT CT.											
Center Point						1.00					
BLEVINS CT.											
Blevins		15.00		281.00							
CADDO CIRCUIT											
Caddo Gap		1.00	1.00	4.00		1.00					
County Line		1.00	1.00	4.00		1.00					
Grant's Chapel		1.00	2.00	4.00		1.00					
Norman		2.00	6.00	15.00		3.00					
Total		5.00	10.00								

CURRENT NEWS IN ARKANSAS METHODISM

YOUTH DIVISION OF SOUTH FORT SMITH CHURCH

The Youth Division of the South Fort Smith Church had a joint study on "China" during the month of January, under the direction of our capable pastor, Rev. J. T. Willcoxson. We had our sessions on each of the Sunday nights; four of them being study and discussion, while the fifth night was given to a picture, "Beyond Our Own", which the entire church enjoyed. We are grateful to the First Methodist Church of Fort Smith for loaning us their machine and operator for this picture.

Plans are not complete for our offering of approximately \$15.00 towards a China project, but we are contemplating sending it to the "Association for the Chinese Blind."

In concluding this study, the recreation committees entertained Friday night, February 4th, at the home of Mrs. Hubert Gill, Senior Counselor. Thirty-three were present including our pastor and his wife. Popcorn balls and cold drinks were served at the refreshment hour.—Mattie Robison.

PANGBURN CHARGE AND THE ADVANCE

At our District Conference on February 3 my charge was given a quota of \$400.00 for the Advance for Christ and His Church, \$200.00 for Pangburn Church, \$100.00 for Oak Grove Church and \$100.00 for Mt. Pisgah Church. O. N. Scrozier, church treasurer, explained to the church that the \$100.00 which was Mt. Pisgah's quota could be paid \$25.00 now and \$25.00 a year for the next three years. His statement gave me a starting point and as pastor I said, "Yes, I believe Mt. Pisgah Church will do her part. Your pastor will give \$10.00 if the church will pay off the \$100.00 now." A good layman, Manley Williams, said, "Let us get that \$100.00 today" and in three minutes' time the \$100.00 was raised. The pastor was given a \$100.00 check in full for the four years.

Our prayer is that the other churches will do as Mt. Pisgah has done. The pastor will give one-tenth to each church that pays out by March 20, the date of our next quarterly conference.

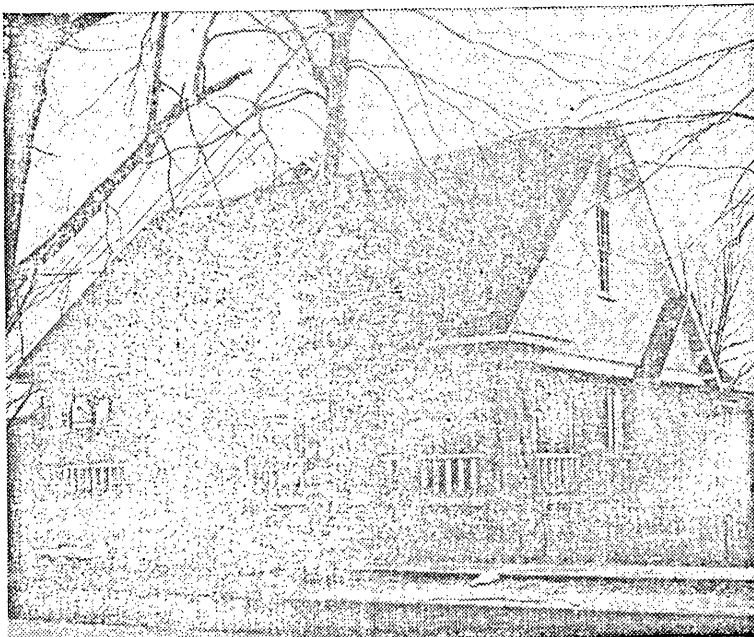
The pastor and wife are very proud of the charge. The pastor's salary and claimants are paid up to date. The Benevolences are paid in full for the year.—James G. Smith, Pastor.

MEETING OF PINE BLUFF SUB-DISTRICT

The Pine Bluff Sub-district M. Y. F. met at the Hawley Memorial Church on January 17. The president, "Bo" Brewer, of the Good Faith Church was in charge of the business meeting. The Sub-district has a project each month. This month the project was gathering used eye glasses for the people in India. They are being sent to Rev. Halsey E. Dewey, missionary in Pakaur, Bihar State, India. Eighty pairs were brought to the meeting.

Miss Patsy Helvie, chairman of the Commission on Recreation, was in charge of the devotional meeting, after which the Hawley M. Y. F. entertained with games and refreshments.—Reporter.

THE PARSONAGE AT FORDYCE



For nearly twenty-five year Fordyce Methodism had been without a minister's residence. Early last fall the building pictured above was purchased by the congregation. It is a commodious, nine room house of brick veneer construction, conveniently located near the church. The grounds unusually large and ringed by large oaks, set within by pecan and fruit trees and ample shrubbery and flowers, make a beautiful and comfortable setting. After complete reconditioning within and without and elegantly furnished by the combined efforts of the special parsonage committee and the W. S.

C. S. the home was ready for the pastor and his family in October.

On January 2 the W. S. C. S. assisted the pastor's wife in holding "open house" which was attended by a large number of the members and friends. Tables were beautifully decorated with camellias brought from "the deep south" for the occasion. Mrs. L. Weems Trussell, president of the W. S. C. S., and Mrs. Harry Nutt president elect, presided at the table from which coffee, cake and nuts (grown on the premises) were served. The expression of delight and satisfaction with the new property was unanimous.

CHRISTIAN ADVENTURE INSTITUTE AT CHARLESTON

A Christian Adventure Institute was held at Charleston on Feb. 4-5. The institute began with registration on Friday afternoon at 5:00 o'clock and closed at 2:30 o'clock on Saturday. Forty-seven intermediates from six of the churches of the Mt. Magazine Sub-district area were in attendance. Earle Cravens served as dean of the Institute. Rev. Martin A. Bierbaum directed the recreation.

Two courses were offered. Mrs. D. G. Hindman taught Beyond Our Church Doors (1032-A) Earle Cravens taught the course, God and the World Today (1001-A). The First Methodist Church at Charleston was host church and entertained in a delightful way. The meals were served at the Church and the guests were entertained in the homes. Another area institute is being planned for May 7-8 to be held at Booneville.—Earle Cravens.

NEWS FROM PULASKI HEIGHTS CHURCH

The largest attendance in the history of the church was present when the Pulaski Heights Church, Little Rock, held its first service in the Prospect Theater building Sunday morning, January 23, according to Rev. Kenneth Shamblin, pastor. The record attendance was attained despite dreary, inclement weather with intermittent showers.

Attendance more than filled the theater with several being unable to obtain seats. Capacity of the

theater is 610 which is more than 200 greater than the largest attendance at the present church sanctuary.

The move to the theater building for Sunday morning worship services was necessitated because of the small seating capacity of the church sanctuary and to give more space for an expanded Church School attendance. The church will continue to use the Prospect Theater building for morning worship services until the new sanctuary is completed. The use of the theater is furnished by courtesy of Robb and Rowley, operators of the Prospect. Evening worship services will continue to be held in the present sanctuary.

The move of worship services to the theater building enabled shifting of space assignments in the Children's and Youth Divisions of the Church School to permit larger attendance. The Youth Division was moved to the balcony and second floor of the church and the Junior Department was transferred from the basement to the main auditorium. Sections beneath the balcony have been divided into classrooms and the central section of the sanctuary will be used as an assembly room for the Juniors.

The Primary Department has been moved to the space formerly occupied by the Junior Department in the banquet room in the basement. A portion of the Beginners Department was moved to the space vacated by the Primary group which in turn allowed more room for the Nursery Department.

Despite weather conditions, at-

THE SPIRITUAL STATE OF THE CHURCH

(The following is the report of the Committee on the Spiritual State of the Church to the Prescott District Conference.)

We your Committee on the Spiritual State of the Church beg to make the following report:

We rejoice with you this day in the inspiring reports of the churches to the Conference. Our hearts are made glad. We thank God and take courage. Nevertheless, it is grievous for us to report our convictions, that the spiritual state of the Church is below par. All too many nominal Christians are at "ease in Zion". Keeping up a form of religion, they make religion a farce, having nothing to do with religion as a force. Our shallow complacency must perish. We are now facing the march upon us of tremendous days. We must face the mystery of the unknown future with holy zeal unafraid by "waiting upon the Lord" and "Looking unto Jesus".

Things need not be as bad as they appear, for to know our need is our salvation. They who think they are in perfect health sense not the need of the physician. It is stated in a proverb, "Pride goeth before destruction and a haughty spirit before a fall", as the Apostle Paul warned, "Let him that thinketh he standeth, take heed lest he fall".

The most expensive thing about the Church is the empty pew. The seats of the Church may be empty, but not the seats of the scornful. Let us therefore, "not forsake the assembling of ourselves together, as the manner of some is", since there is no substitute for the public worship of God.

The fire flickers low on the altar of the Church because we have failed to keep alive the sacred flame on the altar of our souls. Let us give ourselves anew to meditation and prayer, to the study of the Holy Scriptures and the use of devotional aids, such as the Upper Room and the church paper, and attendance upon the services of the Church. Families that pray and worship together live and stay together both in this world and in the world to come.

As we ponder on the spiritual state of the Church, we are prone to pray in the language of the Psalmist, "Keep back thy servants from presumptuous sins, O Lord. Search us and know our hearts: try us and know our thoughts. Return unto us, the joy of thy salvation. Then will we teach transgressors thy ways and sinners shall be converted unto Thee. And, God, lead Thou us in the Way Everlasting."—Robert Beasley, Chairman.

tendance at Church School Sunday was 667. Average attendance to date this year is 580. E. W. Copeland is Church School superintendent and Mrs. V. B. Story is Director of Religious Education.

Bro. Shamblin announced Sunday that the plans for the new church sanctuary to be located at Monroe and Woodlawn have been placed in the hands of contractors for bids. Bids will be opened by the building committee in a month and construction is expected to get under way shortly thereafter.—Reporter.

Supplemental Report Of Circulation Campaign

This report carries only subscriptions received since last report, together with present charge totals of charges reporting additional subscriptions. It carries also present district totals.

Charge and Pastor

New Renewal Total Present

Charge and Pastor

Present New Renewal Total

Charge and Pastor

New Renewal Total Present

ARKADELPHIA DISTRICT

Present District Total 1166

Fountain Lake	1	10
Hot Springs:		
First Church, F. A. Buddin	4	63
Pullman Heights, H. R. Holland	1	35
Malvern First Church, Dan R. Robinson	1	155**
Princeton Ct., H. A. F. Ault	1	30**

CAMDEN DISTRICT

Present District Total 1664**

Emerson Ct., Elbert Jean	2	14
Fordyce, R. A. Teeter	3	68
Magnolia:		
First Church, John M. McCormack	5	137
Waldo, J. Wayne Mann	1	53**

LITTLE ROCK DISTRICT

Present District Total 1776

Austin Ct., G. B. Pixley	6	37
England, Fred Schwendemann	1	65**
Hickory Plains, R. V. VanLandingham	2	13
Little Rock:		
Oak Forest, D. Mouzon Mann	3	10 13
Pulaski Heights, J. Kenneth Shamblin	7	188**
Winfield, Paul V. Galloway	2	160
Mountain View, Omma L. Daniel	3	4 23*4

MONTICELLO DISTRICT

Present District Total 1058**

Fountain Hill Ct., J. C. Van Horn	1	48
Lake Village, J. Ralph Clayton	1	24*
Warren, H. H. Pinnell	2	106*
Wilmar Ct., Harold Scott	3	18

PINE BLUFF DISTRICT

Present District Total 1179

Grady-Gould, A. W. Hamilton	1	1 62*2
Pine Bluff:		
First Church, Kenneth L. Spore	4	104
Hawley Memorial, C. D. Cade	1	40
Lakeside, Otto W. Teague	9	108
Rison, Bryan Stephens	1	42**
Sheridan Ct., W. F. House	4	6 10
Sherill-Tucker, A. E. Jacobs	5	27**
Swan Lake, Claude R. Roy	2	13**
Whitehall-Redfield, Ed Hollenbeck	1	2

PRESCOTT DISTRICT

Present District Total 874

Center Point Ct.	1	1 2
Glenwood, Robert S. Beasley	5	15 21
Hope, J. E. Cooper	3	104
Nashville, George G. Meyer	6	59 71
Springhill Ct., S. L. Durham	3	3 26
Washington Ct., W. C. Lewis	1	1 28

TEXARKANA DISTRICT

Present District Total 1169**

Cherry Hill Ct.	1	21**
DeQueen, Doyle T. Rowe	1	73**
Horatio Ct., E. T. Miller	1	42**
Texarkana:		
College Hill, R. H. Cannon	1	1 52**
First Church, Edward W. Harris	1	230**
Texarkana Ct., C. H. Gilliam	1	2 31

BATESVILLE DISTRICT

Present District Total 1069**

Cave City-Sidney, Vann Hooker	1	2 40*2
Mountain Home Parish, Joel A. Cooper	1	1 66**
Salem, B. L. Wilford	1	41**

CONWAY DISTRICT

Present District Total 1572**

Morrilton:		
Circuit No. 1, Norris Steele	1	1 3
Circuit No. 2, Paul Dean Davis	8	4 12
North Little Rock:		
Gardner Memorial, V. E. Chalfant	4	4 72
Washington Ave., I. L. Claud	2	107**

FAYETTEVILLE DISTRICT

Present District Total 1378**

Alpena, Woodrow Woods	1	35**
Eureka Springs, Wm. A. Stewart, Jr.	1	37**

FORT SMITH DISTRICT

Present District Total 1763**

Alix Ct., J. F. Owen	1	24
Bethel-Dyer, William Stegall	2	16 18**
Fort Smith, First Church, Fred G. Roebuck	2	1 223
Fifth Street, Bates Sturdy	1	33*2
Greenwood, J. J. Clark	1	63**
Hartman, Paul Kelley	1	64**

HELENA DISTRICT

Present District Total 1416**

Colt	3	8 25
Forrest City, Horace M. Lewis	5	1 175**
Helena, Golder Lawrence	16	37 56

JONESBORO DISTRICT

Present District Total 1587**

Blytheville, Lake Street, Theron McKisson	7	39 46**
Jonesboro, 1st Church, W. Henry Goodloe	5	183
Lake City, B. W. Stallcup	5	2 46**
Leachville, C. C. Burton	1	29
Yarbro-Promised Land, LeRoy Henry	1	3 46**
Lorado Ct., William Odom	1	2 19

PARAGOULD DISTRICT

Present District Total 1062

Hardy-Williford, G. A. Freeman	1	33**
Paragould Circuit, Robert Montgomery	4	29
Piggott, W. O. Scroggin	1	88*3

SEARCY DISTRICT

Present District Total 1184**

Augusta, W. V. Womack	1	71**
Bald Knob-Bradford, W. W. Allbright	1	4 48**
Beebe, Virgil Hanks	1	72**
Friendship, R. A. Bevis	1	5
Harrison, E. J. Holifield	2	108**
McCrary, John W. Glover	2	64**
Pangburn, James Smith	1	39
Quitman, R. B. Howerton	4	11 42
Van Buren County, No. 1 Bennie Jordan	1	54**

LITTLE ROCK CONFERENCE TREASURER'S REPORT

(Continued from Page 13)

Charge	Church	Bishops Fund	Conference Claimants	Benevo- lences	World Service (4th Sun. Off.)	Gen'l. Adm. & Juris. Conf. Fund
Total		\$ 3.00	\$ 51.00	\$ 121.00	\$ 11.00	\$ 5.00
WINTHROP		\$ 2.00	\$ 3.00	\$ 9.00	\$ 3.00	\$ 3.00
District Totals		\$209.32	\$1565.62	\$4890.25	\$368.51	\$148.11
MINISTERIAL SUSTENTATION FUND, PASTOR — Ashdown \$18.00, Stamps \$22.50, College Hill \$12.50, First Church, Texarkana \$40.62, Few Memorial \$2.00—Total						
MINISTERIAL SUSTENTATION FUND, CHURCH—Ashdown \$18.00, DeQueen \$9.00, Lewisville \$10.00, Mena \$11.25, Taylor \$6.00, Welcome \$3.00, Fairview, Texarkana \$9.37, First Church, Texarkana \$40.62, Few Memorial \$2.00, Bradley \$4.00—Total						
OVERSEAS RELIEF—First Church, Texarkana						
WORLD COMMUNION OFFERING—Harmony Church						
GRAND DISTRICT TOTAL						

Receipts from Little Rock Conference of the Period Nov. 1-Feb. 8 1949

RECAPITULATION

District	Bishop's Fund	Conference Claimants	Benevo- lences	World Ser- vice (4th Sun. Off.)	Gen. Adm. & Jur. Conf. Exp. Fd.
ARKADELPHIA	\$ 356.17	\$ 2185.24	\$ 4609.23	\$ 346.42	\$ 236.86
CAMDEN	609.90	3596.64	5901.09	594.78	520.45
LITTLE ROCK	425.67	2215.30	7301.70	248.15	280.65
MONTICELLO	261.55	2133.69	2144.37	720.01	176.59
PINE BLUFF	292.46	1767.38	3226.41	864.65	249.45
PRESCOTT	176.23	920.13	2566.26	93.28	103.78
TEXARKANA	209.32	1565.62	4890.25	368.51	148.11
TOTAL	\$2331.30	\$14384.00	\$30639.31	\$3235.80	\$1715.89
World Communion Offering					
ARKADELPHIA	\$31.00	\$ 56.00	\$ 66.00	\$ 66.00	\$ 181.19
CAMDEN	11.00		46.50	332.47	332.47
LITTLE ROCK		231.11	34.22	32.13	206.09
MONTICELLO				118.50	155.93
PINE BLUFF	30.46			32.00	165.74
PRESCOTT		14.00		25.91	45.91
TEXARKANA	5.00	75.00		95.62	113.24
TOTAL	\$77.46	\$145.00	\$231.11	\$34.22	\$1200.57
District Area Fund					
ARKADELPHIA			\$ 42.75		
CAMDEN			15.00		
PINE BLUFF			34.91		
PRESCOTT			8.40		
TOTAL			\$101.06		

Grand Total Received for period beginning of 1948-1949 through February 8th, 1949

C. E. HAYES, Treasurer.

"Keep your temper, nobody wants it."—Cobbers, Australia.

GOWNS
Pulpit and Choir
Headquarters for
RELIGIOUS SUPPLIES
Church Furniture - Stoles
Embroideries - Vestments
Hangings - Communion
Sets - Altar Brass Goods
National

ELECTROLUX
Cleaners and Air Purifiers
New Cleaner \$69.75
Complete with Attachments
Supplies and Parts
Call or Write
Jno. B. Garrison, Service Man
1614 Louisiana St.
Little Rock, Ark.
Phone 4-9237

BRENAU COLLEGE
GAINESVILLE, GEORGIA
1878-1949—Non-Denominational,
Christian, Accredited
Member-Southern Association of Colleges
and American Council on Education
Liberal Arts College for Women
Special Career Courses for Women
JOSIAH CRUDUP, President
For Information, Address Box 100A

ACOUSTICON'S

Revolutionary New Hearing Development!

NOTHING TO WEAR

NO CORDS!

NO RECEIVERS IN THE EAR!

E. Grant Gibbons, who has been helping the hard of hearing in Arkansas for the past 17 years will give free demonstrations and examinations at the following times and places.

Mr. Gibbons is also a distributor of Acousticon Group Hearing Systems for Churches and other auditoriums. Over 2500 churches guarantee good attendance of the congregation by means of Acousticon Church Systems.

CLINICS

Date	City	Location
Tues. Feb. 15	Clarksville	Arlington
Wed. Feb. 16	Fort Smith	Goldman
Thurs. Feb. 17	Fayetteville	Mountain Inn
Fri. Feb. 18	Rogers	Harris
Tues. Feb. 22	Hot Springs	Como
Wed. Feb. 23	Malvern	Barlow
Thurs. Feb. 24	Camden	Ouachita
Fri. Feb. 25	El Dorado	Garrett
Tues. Mar. 1	Pine Bluff	Pines
Wed. Mar. 2	McGehee	Garland
Thurs. Mar. 3	Warren	Southerland
Fri. Mar. 4	Fordyce	Kilgore
Tues. Mar. 8	Morrilton	Lane
Wed. Mar. 9	Ozark	Bristow
Thurs. Mar. 10	Paris	Commercial
Fri. Mar. 11	Booneville	Armstrong
Tues. Mar. 15	Conway	Bachelor
Wed. Mar. 16	Heber Springs	Parkview
Thurs. Mar. 17	Batesville	Marvin
Fri. Mar. 18	Searcy	Mayfair

Clinic Hours: 1:00 P. M. to 5:00 P. M.

Demonstrations by appointments after Clinic Hours
Will spend night at each Clinic location.
Available following morning.

ACOUSTICON OF LITTLE ROCK

E. GRANT GIBBONS, Distributor
1418 Donaghey Bldg., Little Rock.
18th Year of Dependable Service

The Sunday School Lesson

By DR. O. E. GODDARD



THE STANDARDS OF THE KINGDOM

LESSON FOR FEBRUARY 27, 1949

SCRIPTURE TEXT: Matthew 5:7.

GOLDEN TEXT: Seek first his kingdom and his righteousness. Matthew 6:33.

The Sermon on the Mount has not been studied adequately by the Christian world. It is not a theological treatise. Hence the argumentative theologians have not found it a green pasture. It says nothing about ritual, so the ritualists have passed it by on the other side. It says nothing about church government. Therefore those unduly concerned about church government have no deep interest in it. It has to do with Christian ethics. It teaches how to live the Christian life. It is the largest and finest reservoir of ethical truths in the world's literature.

I have dipped lightly into literature of the moral philosophers of the world and read a little of what American and English philosophers teach. I am not entirely unfamiliar with the teaching of Greek philosophers. I read with intriguing interest the teaching of Confucius, the great Chinese philosopher. During my life time, the Hammurabi Code, discovered in 1902, gave some beautiful moral concepts. In all these are found some worthwhile moral lessons. But as compared with the Sermon on the Mount, they are inadequate and immature. I hope it does not sound irreverent for me to say that Jesus seemed to put his best effort in the Sermon on the Mount. It ought to be read, re-read, and then read again by every follower of the Great Teacher. Do take this suggestion, every one of my readers of these lessons: Read the entire Sermon on the Mount once daily for a week. This requires only fifteen minutes daily for an average reader. Please begin today, February 20, 1949, and on February 28, I want every one to write me a card indicating the help you have gotten from this systematic Bible reading.

It is regrettable that the International Committee did not allow more time for the study of the Sermon on the Mount.

How To Be Happy

Every one of us wants to be happy. Very few of us attain happiness. Some think that plenty of money would make them happy. Some believe that exalted position and great influence would bring happiness to them. Many suffering people think release from pain would make them happy, but happiness never comes on these conditions.

Jesus has something to say on this subject. Jesus said, "Happy are the poor in spirit." That is: those whose spiritual attainments are so far below their ideals that they call themselves poor in spirit. Jesus says such a man is happy. He says again, "Blessed are they that mourn, blessed are the meek, blessed are they that hunger and thirst after righteousness." (Matthew 5:4-12). According to what Jesus listed in this category, a man is happy be he rich or poor, sick or well, known or unknown, bond or free.

Encouragements For Prayer

Jesus said, "Ask and ye shall receive." Could anything be any more encouraging than this? Jesus is more eager to confer favors upon us than are our earthly parents.

The Universal Prayer

After this manner therefore pray ye: Our Father which art in heaven Hallowed be thy name. Thy kingdom come. Thy will be done in earth, as it is in heaven. And forgive us our debts, as we forgive our debtors. And lead us not into temptation, but deliver us from evil: For thine is the kingdom, and the power and the glory, for ever. Amen." (Matthew 6:9-13). This prayer is recited (I wish I might say prayed) by millions of people, every Sunday throughout the Christian world. This prayer, brief as it is, if fully answered would supply every Christian need.

"Our Father." This implies that all the world can call God our Father. It also implies that all men and women are our brothers and sisters. What more would be needed if these implications were realized? "Hallowed be thy name." If we revered God as we should, we would reverence his book, the Bible, his institution, the church, and his day, Sunday. What a vast change this would make in human relations if this were answered.

"Thy will be done in earth as it is in heaven." Thy kingdom come is an extensive petition praying for the establishment of the kingdom in all the nations of the earth. "Thy will be done in earth." This also is an extensive petition, praying that every individual may do the will of God as obediently as the celestial throng in heaven do his will. What more could we ask if these two petitions were answered, and who could pray them but people with the missionary spirit?

"Forgive us our debts as we for-

give our debtors." Herein lies the implication that if we expect God to forgive us of our sins we must maintain a forgiving attitude toward all who have sinned against us. To make this prayer while we have an unforgiving spirit toward any one virtually is asking God not to forgive us.

The Golden Rule

All philosophers of all ages seem to feel that there is some obligation upon all people to treat all other people as they would like to be treated. The great Roman, Persian, Hindu, and Chinese philosophers all tried to express this thought but they all failed. The Chinese made the best effort. Confucius said, "Do not treat any one else as you would be displeased to have them treat you." This, as you see was in the negative. Jesus expressed it perfectly in the affirmative form. "Therefore all things whatsoever ye would that men should do to you, do ye even so to them: for this is the law and the prophets." Matthew 7:12).

More wisdom is compacted in this short statement than can be found in any other literature in the world. This law is perfectly fair to all men everywhere. If you do not want a man to lie about you, do not lie about anybody else. If you do not want to be cheated, do not cheat any one. If you do not want false rumors circulated about you, do not circulate false rumors about anyone else. This applies to every wrong that could be done to anyone. Confucius could go that far, however. But Jesus requires us to do every good to every person that everybody could do to us. We want to be loved, cooperated with, aided in all laudible undertakings, ministered to in our misfortunes and distressed, helped in times of need, and comforted in our sorrows. All this we must do to all men everywhere. I have observed that with what measure you mete, it shall be measured to you again. What an admirable, happy, satisfying relationship would exist between and among all men were all men "Golden Ruleites." If we applied this rule to international relationships, and it should be applied there, we would have one world of peace, far better than Wendell Willkie's "One World"

All of our troubles, individually, in families, in the business world, in the political world, and in the international world, stem from our ignoring the ethical requirements

laid down by the Lord Jesus in the Sermon on the Mount.

Perfection

"Be ye therefore perfect, even as your Father which is in heaven is perfect." There are some great words of which some people are afraid; Perfection, holiness, sanctification, perfect love, and sinlessness. These are very good words when rightly used.

When Jesus said we should be perfect even as his Father in heaven is perfect, he did not mean we should be perfect as is God, but perfect as a man. God never expected us to be perfect in our judgment; if he had he would have given us more grey matter. Some holiness people seem to think that perfect love makes any one perfect in his judgement. I have seen some holiness people who assumed that they could not make a mistake. God does not expect us to be all wise, neither does he expect us to be omnipotent. Sanctified though we be, we still have our human limitations.

What Is Human Perfection?

In brief it is meeting the design of the designer. God has a specific work for every human being to do. If he does that work just as God designed he should do it, then he is a perfect man. If a machine does perfectly the work the inventor designed it to do, it is a perfect machine. Likewise, if we do what God designed for us to do, we are perfect human beings. This does not mean that we will not be imperfect and limited in matters not germane to the divine purpose in our lives. A reaper may not be a good cotton picker, but that would not destroy his merit as a reaper. A cotton picker would fail without doubt as a reaper, for he was not designed for a reaper.

Whatever limitations we have and whatever mistakes we make, will not prevent the Master (If we have achieved that for which he designed us) from saying, "Well done." Therefore everyone of us should strive to be perfect.

I am sorry to close this lesson with such brief discussion on the Sermon on the Mount. I deeply covet the opportunity to give twelve more lessons on this study.

Be sure to read the entire Sermon on the Mount during this week and report to me at the end of the week which will make you eligible to membership in my star pupil class.

Little Rock's ONLY Combined Department Store and Variety Store



You'll LIKE
Sterling's Goods
and Service!

Sterling
Department Store

★ CAPITOL AVENUE AT CENTER ★

LITTLE ROCK, ARKANSAS

Religion

come for the meeting of the
tion of The National As-
hodist Hospitals and Homes
bruary 16-17. Superinten-
tators of Methodist hospitals
rs of the General Board
Homes, representatives of
Boards of Hospitals and
other invited guests attend-
which followed a one day
al Board on February 15th.
d, Rev. R. E. Simpson, Rev.
C. Norman Guice, and the
conference from Arkansas.
ing leaders including Bishop
y L. Smith, Bishop W. T.
rald H. Kennedy, Bishop
and Karl P. Meister partici-
n. In various group meet-
d to the administration of
s were discussed. At the
session Bishop Watkins, as
rd of Hospitals and Homes,
hips in the Methodist Hall
ropy" to several Methodist
de unusually large gifts to
s serving in this field.
ecretary's report indicated
developing a great ministry
ring for the unfortunate.
eventy hospitals and cared
ion patients last year. Our
en children's homes which
or five thousand nine hun-
e children. There are now
agencies and homes which
ree thousand five hundred
ersons who were beyond
ge. The church also oper-
or youth and deaconesses.
board represents one area
is prompted by the Chris-
religion in action.

Of Arkansas It Again

ulation Campaign practical-
we feel that it is in order
s final editorial comment,
self is a report. We are
our second supplementary
tion Campaign. Those in-
find, by adding the district
had 20,191 subscriptions
his is twelve hundred more
than we had received through pastors' reports
through February last year.

Our readers will understand that The Ar-
kansas Methodist has from one thousand to fif-
teen hundred subscribers that do not show up in
the reports of pastors. They came from thirty-
seven states and the District of Columbia besides
our Arkansas subscribers. We have several sub-
scriptions going to foreign countries. They come
also from some individuals within the state who,
for reasons best known to themselves, prefer to
send their subscriptions direct to our office with-
out naming their church relationship.

At the present time our subscription list is
about twenty-one and a half thousand. It will
likely reach twenty-two thousand when every-
thing is in. This will be two thousand six hun-
dred thirty-eight more than the total of the
quotas assigned to the fifteen districts of the
(Continued on Page 4)

THE ADVANCE

FROM CRUSADE TO CONQUEST



LAST week the Southwestern Advocate, pub-
lished in Dallas, Texas, carried the an-
nouncement that the publication of the
Southwestern Advocate, as an independent
church paper will be discontinued. In its place
there will be a Southwestern Advocate section of
four pages carried weekly in The Christian
Advocate, which is published in Chicago.

In the plan, as announced, there will be a
full-time editor, located in Dallas, to furnish
materials for the four pages to be published in
The Christian Advocate.

The Southwestern Advocate had been serv-
ing the church for ninety years. We regret very
much to see it discontinued as an independent
publication. When it discontinues, The Arkan-
sas Methodist will then be the only Methodist
weekly publication of its character west of the
Mississippi River.

licensed preachers to fill his pulpits. With
the growing shortage of ministers today
we again need them in our pulpits. Also
we are learning anew the effectiveness of
lay preachers in promoting the work of
the church.

For use on Laymen's Day, this year,
the Board of Lay Activities has published
a pamphlet written by Dr. Frank D. Slutz
of Dayton, Ohio. It contains a program
for the day and a very suggestive dis-
cussion of the theme of the day—"I Am
A Methodist." In preparing this discussion
the writer has kept in mind The Advance
for Christ and His Church. This force-
ful discussion leads us to a better under-
standing of the meaning of membership
in The Methodist Church.

The Sun

By



T

SCI

GO

righteous

The Sermon on the Mount has not been studied adequately in the Christian world. It is not a logical treatise. Hence the great theologians have not found a green pasture. It says nothing about ritual, so the ritualists passed it by on the other side. It says nothing about church government. Therefore those who are concerned about church government have no deep interest in it. It has to do with Christian ethics. It shows how to live the Christian life. It is the largest and finest collection of ethical truths in the world.

I have dipped lightly into the literature of the moral philosophy of the world and read a little of the American and English moralists. I am not entirely satisfied with the teaching of the philosophers. I read with interest the teaching of Confucius. In my life time, the Han Dynasty discovered in 1902, gave us beautiful moral concepts. In the Sermon on the Mount, I found some worthwhile lessons. But as compared with the Sermon on the Mount, the Han Dynasty does not sound irreverent. I say that Jesus seemed to make the best effort in the Sermon on the Mount. It ought to be read and then read again by every member of the Great Teacher. This suggestion, every reader of these lessons should read the entire Sermon on the Mount daily for a week. This will take fifteen minutes daily for every age reader. Please begin on February 20, 1949, and on February 28, I want every one to have a card indicating the he has gotten from this system of reading.

It is regrettable that the national Committee did not have more time for the study of the man on the Mount.

How To Be Happy

Every one of us wants to be happy. Very few of us know how to be happy. Some think that money would make them happy. Some believe that exaltation and great influence would make them happy. Many people think release from their troubles would make them happy, but happiness never comes on these conditions.

Jesus has something to say on this subject. Jesus said, "Happy are the poor in spirit." That is: those whose spiritual attainments are so far below their ideals that they call themselves poor in spirit. Jesus says such a man is happy. He says again, "Blessed are they that mourn, blessed are the meek, blessed are they that hunger and thirst after righteousness." (Matthew 5:4-12). According to what Jesus listed in this category, a man is happy whether he is rich or poor, sick or well, known or unknown, bond or free.

Meet THE METHODIST HORSEMAN!



THIS IS THE CIRCUIT RIDER . . . symbol of The Methodist Publishing House, established in 1789 by The Methodist Church to carry on its publishing interests and to spread the message of Methodism throughout the world. The Publishing House grew with the Church, spanned the continent, and today, 160 years later, serves millions.

The Methodist Publishing House belongs to you laymen. You can buy any book in print from us, all kinds of church and church school supplies . . . in fact, you can completely furnish your church from The Methodist Publishing House. You get the best possible price on our merchandise and you help the Church every time you order from us.

You see, every order you send us means that we can give greater service to the Church. Besides, each year the surplus produce of the Publishing House is turned over to the fund supporting retired ministers and their dependents. So every time you buy from us, Methodism gets a boost . . . reason enough to shop The Methodist Publishing House way.

If you are not receiving our attractive catalogs, how about filling in the coupon below so we can put your name on our mailing list?

Please add my name to your mailing list. I am interested in the items I have checked below:

- ☐ Books ☐ Audio-Visual Aids ☐ Church School Literature
☐ Church Furniture, Equipment ☐ Church and Church School Supplies

Name _____

Address _____

City _____ () State _____

Mail this coupon to the House serving you listed below

THE METHODIST PUBLISHING HOUSE

Cincinnati 2 Chicago 11 Nashville 2 San Francisco 2
Kansas City 6 Portland 5 New York 11 Pittsburgh 30
Richmond 16 Dallas 1 Baltimore 3 Boston 16 Detroit 1



You'll LIKE
Sterling's Goods
and Service!

Sterling

Department Store

★ CAPITOL AVENUE AT CENTER ★
LITTLE ROCK, ARKANSAS