

# Arkansas Methodist

*Serving One Hundred and Sixty Thousand Methodists in Arkansas*

"The World is My Parish" — John Wesley

"Go ye into a

world—" — Mark 16:15

VOL. LXIV

LITTLE ROCK, ARKANSAS, JAN. 25, 1945

NO. 4

## The "Key Man" In The Crusade For Christ

IN the preliminary plans for the Crusade for Christ there was some difference of opinion as to just who would be the "key man" in putting over the program. Some placed the responsibility on the Bishop of an area. One who gives thought to it would know that the Bishop's relation to the movement must of necessity be too general to be the determining factor for the success or failure of the movement in the hundreds of pastoral charges in his episcopal area.

In the District Superintendents Conference in St. Louis there seemed to be a tendency to look on the district superintendent as the "key man" in the movement. The fact of the business is that every leader of Methodism has a definite responsibility in this great movement. Bishops, general and conference secretaries, editors of religious press, district superintendents, leaders of our various organizations whether they be national, conference, district or local all, unquestionably, have responsibilities that they must carry well if the high goal set in the Crusade for Christ is to be reached.

Having said that, there is no pastor, who reads these words, but who knows that the sweep, the power, the vision, the spirit that will give success to this movement in his local charge must be channelled largely through his own heart and soul. There should and will be many forces contributing to the momentum of this movement. The fact remains, however, that the most important personage throughout the church, in the Crusade for Christ, is the pastor.

## That Russian Drive

THE fortunes of battle ebb and flow. The spirit of optimism and expectancy in the United Nations rises and falls with the tides of battle. With the armies of Russia appearing all but dormant on the eastern front and the British and American armies in Belgium fighting, but recently, to prevent a great German victory, the spirits of our people reached the lowest level recently since D-Day. When the worst that the Germans could do in their drive was not enough to reach their goals and their armies were slowly driven back we breathed easier.

Now that long expected, long hoped for Russian drive is under way. War commentators declare it to be the most powerful attack in military history. The long-prepared German defenses have crumbled before it as if they were make-believe defenses built by children. The blitz war of Germany in Poland and France in the beginning of the war is not to be compared with this Russian drive.

Hitler has called on his "people's army" to hold the Russian attack until the main German army can fall back to a stronger line. If the main German army is as helpless as it seems to have been in the face of this drive, the "people's army" can do little more than clutter up the roads over which the Russians want to travel. Such an army can offer no real resistance to the present Russian army.

The leaders of Germany have properly interpreted the present assault as a bid for a final decision. With the armies of Britain and the United States pressing the battle on the western front and the Russians loose in the east almost anything might happen.

## Problems Religion Will Solve

LAST week, under the caption of this article, we discussed world peace as one of the important world problems that religion alone can solve. Very closely related to the problem of world peace are the political problems facing mankind. ONLY RELIGION CAN SOLVE OUR POLITICAL PROBLEMS.

There was once, quite prevalent in the world's life the theory of "the divine right of kings." Rulers professed to govern by the will and plan of God. Since these rulers were not answerable to the people for their conduct or their administration, all kinds of injustices prevailed.

The struggle of the masses, for the past two thousand years, has been a slow, determined battle for political freedom. Jesus taught us that the most valuable, the most important treasure in the world is human life, human personality. Anything and everything else is valuable only as it ministers to man, the crowning creation of God.

I say that the real and permanent grandeur of these states must be their religion.—Queen Victoria.

The Fascist philosophy that the state is supreme and that man exists only to serve the state is in direct contrast to Christ's teaching regarding the infinite value of man. No political government or political theory that treats human personality as of secondary importance can permanently succeed.

Perfect government, if we ever attain it, will exist for the good of its subjects rather than that they exist for the good of the state. This can and will come about only when the selfishness, the greed, and the personal ambitions of our rulers give place to a genuine Christian spirit.

There is not a political problem, national or international that could not be solved or put on a down-hill pathway toward solution by a sincere application, by all parties concerned, of the Golden Rule. At the present time, there is no other solution in sight. We can patch up our difficulties, we can postpone our crises, we can hope, despite our tragic experiences of the past, that a man-made way can be found to solve our political problems. We need not be optimistic, however, about the solution of such problems so long as the most important figure—Christ—is left out of the equation.

## Nation-Wide Religious Programs Still Beg Money

FOR quite a while the National and Columbia Broadcasting Systems have refused to accept contracts for broadcasting religious services in which there is an appeal for money to pay for the broadcast. The Mutual Broadcasting System continued to carry such programs until a few months ago. At that time they permanently discontinued religious programs of that character.

There are some of these nation-wide programs that apparently were so remunerative that, by indirect methods, they are still heard in a larger part of the nation. The present plan is to make a transcription of the program and send it out to local stations to be carried on their local programs. By selecting their stations, it is quite possible that these "begging" religious broadcasts reach about as many people as formerly on their chain programs.

The amount of money some of these nation-wide programs were reported to have received from their listeners reached an amazing figure. Despite the profitable business they gave to the large chain broadcasting systems, these companies finally barred them from their programs because, apparently, they did not consider such programs fair to their listeners.

Unfortunately the producers of some of these programs have "by-passed" the chain systems and are using local stations to continue a kind of a "black market" appeal for funds to "carry on their program." But for reports that seem to be reliable, one would hardly believe that some religiously inclined people would be so gullible as to support in such a large way financially these unauthorized, self-initiated appeals for money. Many good, religious, trusting people are deceived by these self-appointed world-evangelists and send them funds without having any knowledge of the real use made of their contribution.

We believe that at least one safe course to follow would be to refuse to help pay for the broadcasting of a religious program that is of such a character that our greatest broadcasting companies of America will not carry it for pay.

## Batesville District First To Reach Quota

BATESVILLE District, with a quota of eight hundred eighty-one subscribers for the Arkansas Methodist, has exceeded its quota to date by eighty-five subscriptions. The unusual reports from the city of Batesville helped to make this possible.

Batesville 1st Church, of which Rev. H. L. Wade is pastor, with a quota of one hundred eighteen, reported a total of two hundred nineteen subscribers. This is the largest list received from any church of the state. Central Avenue, Batesville, of which Rev. Ewing T. Wayland is pastor, with a quota of seventy-five reported one hundred fifty-six subscriptions.

This gives Batesville a total of three hundred and seventy-two subscribers, which is more than forty-two per cent of the district's quota. This is the largest number of Arkansas Methodists going to any town in the state outside of Little Rock. The paper is now going into every Methodist home in Batesville.

# A World In Agony

By DR. ROBERT W. SEARLES

Executive Security, Council of Churches for Metropolitan New York

(This is the first of two addresses given by Dr. Searles at the National Christian Education Conference at Nashville, December 29-January 3. The second, *JESUS THE SPECIFIC AND THE SPECIFIC OF JESUS*, will be carried in next week's issue.)

YOU and I live in a desperately sick world. You and I are inescapably concerned with this sick world because it is our world. We will spend the rest of our lives in it. Our children live in it and their children after them will live in it. All that the future holds of welfare, of happiness or of peace for our immediate generation is bound up in the issue of the world's sickness.

The first thing that we must do is to become aroused, shocked or terrified, if necessary, into an alert concern. This world is not going to heal itself. Its sickness will not be cured unless you and I and other people like us are raised to the alert, take our posts for action and carry through to the end with the duty which falls to our lot.

Not long ago I talked one evening over the dinner table with the distinguished dean of one of our leading universities and a third man, a person of note in the economic, the educational and the publishing fields. In the course of the conversation this third man turned to the dean and asked: "What is your picture of the years immediately ahead?" After a moment's thought the startling answer came back—"After the war I see in America an unprecedented scramble for profit followed within twenty years by civil war."

About that time there was published by the economist and adviser to industry, a book entitled "The Rest of Your Life." Orville Prescott in the New York Times said of it that it presented a terrifying picture of the future.

A few years ago the deeply religious poet-prophet, Alfred Noyes, issued a stern warning in his book, "The Edge of the Abyss," and the great philosopher, Dean of the Department of Sociology at Harvard University, Pitirim Sorokin, concluded his book, "The Crisis of Our Age," with this vibrant challenge:

"The more unteachable we are and the less freely and willingly we choose the sole course of salvation open to us, the more inexorable will be the coercion, the more pitiless the ordeal, the more terrible the *dies irae* of the transition."

Let us hope that the grace of understanding may be vouchsafed us and that we may choose, before it is too late, the right road—the road that leads not to death but to the further realization of man's unique creative mission on this planet!

"Blessed is he who cometh in the name of the Lord."

Our first duty is to realize to the depths of our being that this world is critically sick.

Our second duty is to subject this sick world to thorough objective study in order to diagnose its sickness.

Let us for this purpose imagine ourselves to be in an operating theatre with the world the focus of our attention. Then let us enumerate the major symptoms of sickness that are observable.

The first symptom is the most obvious, the central fact that dominates the life of humanity today. It is the fact—the symptom—of global war—the second and more terrible recurrence in our life time of the conflict of nations with its appalling slaughter of youth, its devastating agony of suffering in body, mind and soul and its whole train of misery and sorrow and destruction.

That one symptom alone should be enough to cause us to devote the rest of life at any sacrifice to finding the cure. But—and it needs to be said again and again—this is not the only symptom. It is but the most evident phase of a vast cataclysm that is shaking all of humanity.

Second only in importance and in some ways more terrible in portent is the unparalleled

friction between races. There are twice as many colored peoples in the world as there are—to be consistent—colorless peoples. On a world scale the white races have sought to keep the darker peoples in their places even as the white majority has sought to do in our nation. Until recently we excluded the people of whom Madame Chiang Kai-shek is one on the ground of racial inferiority. It is the white man's arrogant superiority that aggravates almost beyond solution the problems of India, China, Africa and the colonial areas.

Here in America we have had and will have race riots. Certain peoples who have more coloring in their skins than the other peoples are expected to endure the hardships and make the sacrifices required by our national emergency but to consider themselves an exception to the basic tenet of American democracy that "all men are created equal and endowed by their Creator with certain unalienable rights."

The second symptom of world-wide sickness is racial friction.

The third symptom, which has two manifestations, is to be found within the economic



realm. Today the body of humanity is rent asunder by passionate loyalties and ensuant conflict in the realm of economic theory. Capitalist—"Socialist"—"Communist"—these are impassioned fighting words to all too many hate motivated people. Industry is divided into two armed camps, one under the banner of management and the other that of labor. Emotions of bitterness are being built up on both sides and to an honest eye it seems all too clear that labor is being subjected to a very bad press that magnifies its faults and minimizes its virtues. If this goes on unchecked we can expect unprecedented bloody economic strife.

The fourth symptom, which is most acute in America—is crime. In a recent year there were more crimes committed by white men in the State of Virginia than in all of England, Scotland and Wales combined. In 1920 the daily average prison population of New York state was approximately 7,000. By 1940 it had risen to more than 16,000. A few years ago Courtney Riley Cooper estimated that there was in the United States an army of more than 3,000,000 criminals. At the same time a Commission of the United States Senate asserted that the cost of crime was \$18,000,000,000 annually. Crime, which represents the war-

fare of the individual against society is a serious symptom of the sickness of the world.

But the end is not yet. In the United States today the collapse of family life through divorce affects one out of every six marriages. The rate has doubled since 1914. It has tripled since 1900. It is estimated that at the present rate of increase it will occur in one out of every two marriages within fifty years.

Now divorce is not just a matter of a separation between husband and wife. Where children are involved social statistics show that deep emotional injury is practically inevitable. A case study of three thousand boys who had been imprisoned at one of our great military establishments revealed that 46 per cent of them came from broken homes. Any children's court in the country will substantiate this evidence. The capacity of divorce to inflict life-long suffering on children is a commonplace among sociologists.

The disintegration of family life is the fifth in our list of major symptoms of world sickness.

We come at length to the individual himself and we discover that individual life itself shares in this widespread illness. I have space for but two manifestations of this. The first is the alarming increase of mental and emotional collapse throughout the nation. Hundreds of thousands of men and women can't live with themselves, let alone live with someone else. The second is the increase in alcoholism—as distinguished from hard drinking. The alcoholic drinks to escape a conflict hidden or recognized. Drunkenness has been called a form of temporary suicide and it should be obvious that to cure the alcoholic it is necessary to grapple with the underlying causes.

We who meet here are churchmen. I ask you to look once more upon the world—to see as objectively as you can the church within the world. And lo—religious organization—so-called Christian organization—bear witness to the same disintegrating influence. In 1928 there were 213 denominations in the United States. In 1936 there were 256 and the end is not yet. Added to the fragmentation that is sectionarism, there is the compounding of division into parochialism. Sometimes, and too often, the most intense and unhealthy rivalry exists between churches of a given denomination in the same community and it is all too common for clergymen and parish church members to betray a feeling of ill will against a neighboring church. In addition to these factions peculiar to the church itself, it is undeniable that nationalism, race, economic viewpoint, political allegiance and social status exert divisive influences upon the church.

The church whose mission it is to save the world manifests the very symptoms which are destroying the world.

Here are symptoms enough. Now let us scrutinize them in order to see if collectively they have anything to tell us of the disease which they indicate.

At once a common factor is apparent. In every one of these areas of life it is evident that anarchy exists—that disintegration is present. Nations recognize no law above their own official decisions. Race—has not the white race arrogated to itself a superiority, unsupported by science, and the right and power to organize the life of the world in its own interest? In the divided house of industry is not the greatest problem the conflict of its human elements? We have spoken of crime as the warfare of the individual against society. What breaks homes, but unresolved conflicts growing out of the desires of the members of families? And finally the collapse of individual personality is the result of internal conflict.

So the disease itself is anarchy.

But let us look deeper and seek the center of infection—the source of the infection—the germ which produces the infection.

(Continued on page 15)

# THE DEVOTIONAL PAGE

ROY BAGLEY, Editor

## FROM THE BOOKSHELF

(Quotations from a Faith For Today by Rall).

The heart of religion is spiritual and ethical: an inner attitude of reverence, faith, and devotion, and a way of life; . . .

What God has been able to say to men and for men has depended upon the human response.

Christianity means Jesus — that is its briefest definition.

The center of Christianity is not the man Jesus but the God who speaks to us through him, who comes to us in him.

Through Christ we learn, and dare to believe, that God is redemptive good will.

God does not save men by commandment or might or wisdom, but by his forgiving love that wins them, and by that same love as a transforming force in their hearts.

The emphasis of the New Testament is upon the inner spirit in religion.

But the important fact is this; God is not distant power but living Presence; religion is no mere human effort, it is God's gift.

There are more sure of God than of life itself; God, indeed, is their life.

The things that count most in life are not proved, they are experienced.

No man can have God except by an act of faith.

Our real danger is not credulity but lack of courage. Religion needs reflection, but its greatest demand is high adventure.

## MINDFUL OF HIS OWN

"What is man, that thou art mindful of him? and the son of man, that thou visitest him?" Psalm 8:4.

How insignificant we are when we behold the greatness of God's universe! Surely God cannot give any thought and time to me, says the man of the world. When trouble and disappointment meet us in life, we Christians often feel the same. How can God be bothered about my aches and worries, when millions of people are on this earth and tens of millions of stars must be kept in their appointed courses.

Yet that is the blessed assurance which comes to me out of the Word. God is mindful of my needs and guides me with His eye. I can depend upon Him. His faithfulness is firmer than Gibraltar. The falling sparrow and the shooting star are not outside His notice. He knows them, and they move at His will.

When discouragement and sorrow come into my life, when everything goes to pieces, when I realize that I have not made a go of life, I have this assurance that God lives. Kings die, governments

## POEM FOR THE WEEK

A Prayer

My Lord, I pray that through today  
I may walk patiently,  
Forgetting not that Thy dear hand  
Is leading me.

I know not what Thy wisdom, Lord,  
May choose for me today;  
What the long hours may hold for me  
I cannot say.

I only know that I may go  
Unquestioningly with Thee,  
Remembering that what Thou wilt  
Is best for me.

For Thou, O Lord, canst see the end,  
While I but see the way—  
Help me to walk it patiently  
Throughout today. —Grace Noll Crowell.

## THE ACCEPTED TIME

"Boast not thyself of tomorrow;  
for thou knowest not what a day  
may bring forth." Proverbs 27:1.

A man who had passed through three tragic experiences one day said to his minister, "If someone had told me that all this could happen to me in a day I would not have believed it." It happened and all in one day. More tragic experiences than that can come into human life in a short span of time. True, experiences of great joy and happiness can come to people unexpectedly. There is an urgency in the "todays" of life. The old proverb, "Do not put off until tomorrow what you can do today," has truth that must not be overlooked.

The Bible urges upon us the immediate demands of present opportunities. The great eternal stands to impress upon us the importance of today. Jesus leaves this direction for us, "I must work the works of him that sent me, while it is day: the night cometh, when no man can work." (John 9:4). James warns of the imperative of the present, "Go to now, ye that say,

tomorrow we will go into such a city, and continue there a year, and buy and sell, and get gain; whereas ye know not what shall be on the morrow. (James 4:13,14).

Can I be certain of that? Yes, for God has visited the world in Christ and redeemed me, a lost and condemned creature. I am more precious to Him than ten thousand stars, for Christ died for me.

As long as I believe this, I am confident that all is well. The redemption in Christ links me to God Almighty. We are only frail, lost, worthless, until we are in Christ. Then we are more important than all the stars.

But why is God mindful of me? Does my worthiness merit this? No, never! God's love has redeemed me. God's love makes me precious in His sight.

Divine Lord, remember me day after day, and keep me in Thy grace, through Jesus Christ, my Savior. Amen.—from Candles of the Lord.

today or tomorrow we will go into such a city, and continue there a year, and buy and sell, and get gain; whereas ye know not what shall be on the morrow. (James 4:13,14).

Opportunities for doing good present themselves every day. They pass away too frequently before we take them. The opportunity for speaking a word of appreciation and praise to someone who has been loyal to a task presents itself today. A word of sincere appreciation not only inspires the worker to greater tasks but enriches and welds bonds of friendship which are like chains of gold.

Today is the day to work in the Church. It is well to look forward to special seasons and efforts in your church but every day has its responsibilities in the work of the Kingdom. It is this constant day by day loyalty to the Church that carries on the work that must be done. Perhaps there is a neighbor who has recently moved near you and a word from you will help win them to the Church. People are lost to the Church because we wait for another time.

Opportunities to lead a lost person to Christ pass away. Many backsliders in the church could be reclaimed if each loyal member made it his responsibility to speak a word in season to the cold and indifferent members. People who never have made a commitment of their lives could be encouraged to repent of their sins and trust in Christ if the evangelistic fires burned in the hearts of Christians day by day.

Each day that one continues in sin he is passing by opportunities, precious opportunities that may not come again. Each rejection of Christ brings a hardness to human hearts that sooner or later brings damnation. The frailty of human life adds to the importance of a decision for Christ today. James calls life "a vapour, that appeareth for a little time, then vanisheth away." The privilege of influencing another to come to Christ is passing.

There are uncertainties of the tomorrows so far as things of

## MINISTERS

May I by right of age, venture for a moment to say that your preaching will do no good if it is not, so to say, saturated with compassion. It is pity that finds the heart. I must have in my preacher a man who understands my life, who can lower his voice into a healing whisper, and yet who can denounce unrighteousness as with the voice of a whirlwind; I must feel that he is speaking to me. He never saw me, yet he speaks to me. This is the mystery of the ministry of Jesus Christ.

He who preaches to broken hearts preaches to the times. That is the lesson I would venture to give to my juniors; not the man who is answering something that nobody in the congregation has ever read, but the man who says, "I know you are weary and darkened and burdened, and crushed and heavy-laden, and I give you through the power of Christ the rest for which you pine." That is grand preaching, it is full of tears, and yet they are the tears of a strong man. There is a difference in tears. There are tears that may be merely sentimental weakness; but I know when a giant cries, I know by the grip of his hand that he is strong enough not to be afraid to shed tears when he is talking to broken hearts and blighted lives.

What, then, did Jesus Christ say? He said, they are "as sheep having no shepherd." That is a new idea of human life and human society. We must have shepherds, we must have leaders; the question is not whether we shall have clergy and bishops and ministers and all the clerical order; we cannot help it. How is that? Because we need guidance, we are in perplexity, we want this entanglement to be unraveled, and we say, Is there no prophet in Israel? Is there no one, at least some poor dead Samuel, who could be brought back in some form? We will go into superstition if we do not rise unto faith: take your choice. We must have teachers, men who have the golden key, men who know the right word and know how to speak it. The world, since Biblical history began, has ever wanted such men; they have always been there, they are God's creation, they are intellectual and spiritual miracles. — Joseph Parker.

secondary importance are concern-our hearts cry out for the Eternal, the abiding and through faith we find the answer to this transitory life. Men of faith are able to rise above the shifting things of life and put their hand in the hand of God who changeth not. Assurance comes in the daily dedication and consecration of life to the things of first importance—"Seek ye the kingdom of God, and his righteousness; and all these things shall be added unto you."—R. B.

To obtain success, the heart must be fired with a noble purpose, the thought must be stimulated by the constant presence of a high ideal.—Earl Riney.



# The Arkansas Methodist

PUBLISHED EVERY THURSDAY  
Except the Weeks of July 4 and December 25

SUBSCRIPTION PRICE, \$1.25 PER ANNUM  
Retired Ministers and Wives of Deceased Ministers  
Complimentary

Office of Publication, 1346 Donaghey Building  
LITTLE ROCK, ARKANSAS

E. T. WAYLAND ..... Editor and Business Manager  
ANNIE WINBURNE ..... Assistant Editor

ASSOCIATE EDITORS { Roy Bagley Mrs Sue M. Wayland  
W. P. Whaley Forney Hutchinson

OWNED, MANAGED AND PUBLISHED BY THE  
METHODIST CHURCH IN ARKANSAS  
COMMISSIONERS

Little Rock Conference—J. S. M. Cannon, O. D. Campbell,  
J. L. Hoover, O. C. Landers, C. M. Reves, Aubrey  
Walton, Bernie Wilson.

North Arkansas Conference—Martin Bierbaum, R. L.  
McLester, H. M. Lewis, C. D. Metcalf, J. G. Moore,  
A. D. Stewart.

Entered as second-class matter, January 31, 1908,  
at the Post Office at Little Rock, Ark., under the Act  
of Congress of March 3, 1879. Acceptance for mailing  
at special rate of postage provided for in section 1103,  
Act of October 3, 1917. authorized September 12, 1918.



## A WEEKLY MESSAGE

By FORNEY HUTCHINSON

### THE NESTOR OF ARKANSAS METHODISM

When I was a boy growing up on a farm in Southwest Arkansas, the name of Dr. Andrew Hunter was a household word in all well-informed Methodist homes. He was born in County Cork in old Ireland, and was brought to this country by his parents while he was still a lad. Early in life he was thoroughly converted, joined the Methodist Church and soon entered her ministry. From every viewpoint, he was a great and good man and Arkansas Methodism was proud of him.

In 1901, at the Little Rock Conference which met at Hope, I, with a number of others, was admitted in full connection into the Conference. In those days the Bishops took time to have the brethren of the Conference shake hands with the new men and welcome them into their fellowship. On this occasion, among those who came, was Dr. Andrew Hunter. He was then retired and was very venerable in his appearance. When he got to me, he paused for a moment, put his arm around my shoulders, and with much feeling said, "God bless you Forney. I throw my mantle succession on you. That is the only apostolic succession I have ever known, and was all that I ever desired."

Hunter Memorial, a suburban church on the east side of Little Rock, to which I was returned for my second year at the Conference mentioned, was named for Dr. Hunter. He frequently visited our services and sometimes spoke in our pulpit. It was always a great event with us when he came our way. During the year we paid the church out of debt and he preached the dedicatory sermon. He sat while he spoke and his text was Genesis 5-24: "And Enoch walked with God: and he was not; for God took him." It was a good and helpful sermon. A little later he passed away and as a young preacher I participated in the funeral services at First Church, Little Rock.

When I was sent to First Church some years later, his daughter, Mrs. W. P. Field, was one of our most capable and active members, and it was my privilege while there to receive his son, Andrew, into the fellowship of the church.

In 1930 I was appointed as pastor to Mount Vernon Place Church in Washington, D. C. I found the auditorium rich in its artistic memorial windows. At the rear of the church, and to the right of the pulpit, stands one "Dedicated to the memory of Arkansas' Grand Old Man, Dr. Andrew Hunter." This beautiful memorial

## NEWS AND NOTES ABOUT FACTS AND FOLKS

NEXT week will be the last complete report of the Circulation Campaign. Thereafter, report will show new lists received and will be reported by districts.

REV. GUY MURPHY, treasurer of the North Arkansas Conference, writes: "First quarter report on Benevolences by charges will include receipts through February 6."

FIRST Methodist Church, Hot Springs, has signed a year's contract with radio station KWFC, 1300 kilocycles, Hot Springs, for the broadcast of its Sunday morning, 11:00-12:00 services. Dr. W. B. Slack is pastor.

MRS. W. W. PETERSON, wife of our pastor at Alix-Altus, submitted to an operation at the City Hospital in Magnolia, January 1. She is recovering nicely and expects to be able to return home in February.

REV. J. W. MOORE, pastor at Joiner, would like copies of the 1940 and 1941 Doran's Ministers Manual. Anyone having copies of these for sale write Brother Moore, addressing him at Joiner.

REV. W. R. BURKS, pastor at Smackover, writes: "Chaplain Mouzon Mann who has just returned from the Aleutians preached in the Smackover Church to a large congregation January 21. Chaplain Mann is now a senior lieutenant in the navy. His sermon and his experiences in the navy were greatly appreciated by the congregation."

CHAPLAIN WILLIAM L. ARNOLD writes: "I spent sometime in England and now I am in France. We have a hard job ahead of us but our men have a good sense of humor, and for the most part are very much interested in religion. Please let this little notice have space in the paper so my friends may know my address which is as follows: 198 Gen. Hosp., APO 17130, New York, N. Y. I would deeply appreciate a letter from anyone who wishes to write."

DR. PAUL D. WOMELDORF, executive secretary of the South Central Jurisdiction, makes the following announcement: "Because of travel restrictions the Convention of the Jurisdictional Boards of the South Central Jurisdiction, scheduled for Dallas on February 6, 7 and 8, has been cancelled. This announcement does not apply to Ministers' Week. Dr. E. B. Hawk will make announcement about that meeting later."

REV. J. M. HARRISON, our pastor at Waldron, writes: "We are getting along well as we begin our fourth year with the good people at Waldron. We almost doubled our offering to the Orphanage over what we paid last year. We have gone considerably over our quota for the Arkansas Methodist. We have our local council for the Crusade for Christ organized and have Sunday, January 28, set as our day for the big rally. Dr. A. W. Martin will be our speaker on that day."

THE Methodist Committee for Overseas Relief is one of a number of Protestant service agencies in the United States that are responding to General Eisenhower's appeal for one million blankets to be shipped immediately to Holland for civilian use. The United States government will provide the ships for these blankets needed to replace the stocks taken from Holland by the Germans as they withdrew recently. New or good-conditioned used blankets should be sent at once to the

was a gift of a Mr. Hunter, of Shreveport, La., who was a close friend, but as I understand it, in no way related to Dr. Hunter.

For me it became a sort of a wayside shrine, where I often paused to rest and pray. It served to make me feel at home during my stay in Southern Methodism's representative church in the capital of our nation.

Queen Wilhemina Fund, 465 Fifth Avenue, New York, N. Y., the authorized shipper.

REV. SAM M. YANCEY, superintendent of the Western Methodist Assembly, is doubly bereaved in the death of his brother, John Yancey, of Memphis, Tenn., whose funeral was held on January 12 and in the death of his sister, Mrs. Sallie Vaughan of Des Arc, whose funeral was held on January 13. Brother Yancey writes: "Brother John was 89 years old and Sister Sallie was 86. Both had large families. Brother John was an elder in the Presbyterian Church for over fifty years and Sister was a member of the Methodist Church since childhood." The sympathy of friends goes out to Brother Yancey and members of the family.

SELECTED by 1,288 Protestant laymen and lay women of the United States and Canada, Mrs. Clifford S. Heinz, prominent member of a Pittsburgh family, has been chosen as the 1945 winner of the national Russell Colgate Distinguished Service Citation for her "outstanding contributions to the advancement of Christian education through personal leadership and influence," according to an announcement by Dr. Roy G. Ross, general secretary of the International Council of Religious Education. Presentation will be made to Mrs. Heinz at a luncheon February 7, during the 23rd annual meeting of the Council at Columbus, Ohio.

BISHOP ARTHUR J. MOORE, of Atlanta, Ga., recently told an assemblage of Methodist ministers: "It is not more prosperity or more political sagacity that we need, but more fundamental spiritual conviction and a deeper insight into the will of God and His eternal righteousness. These alone can give us vitality and security. Every civilization in the past has believed that it was secure and eternal. All of them have been wrong. It is increasingly apparent that most of our distress is the result of putting our faith in material power. History is littered with the debris of civilizations which lost their souls. No civilization that is not built upon a spiritual foundation can long endure."

### DEATH OF REV. AND MRS. S. C. DUGGER

A double funeral service was held in the Methodist Church at Watson, Arkansas at 11:00 a. m., Friday, January 19, for Rev. S. C. Dugger, pastor of the church, who died of heart attack January 15; and for his wife who died in the Dumas hospital January 17. Mrs. Dugger was not advised of her husband's passing. Howard, the youngest son, stationed at Camp Robinson after 18 months in Alaska, was with his father when the latter was stricken. Harold, the older son was informed of his father's death but could not secure a release to return home. He knew of his mother's critical condition, but probably will not know of her death for some weeks after reaching foreign soil.

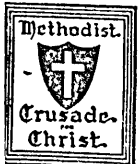
Brother Dugger was beginning his third year at Watson. Both he and Mrs. Dugger were universally loved and appreciated by the people of the Watson-Kelso Charge. The unusual progress of the charge, recorded in the Conference Journal, will bear a lasting testimony to the effectiveness of the ministry of this good man and his wife, coming into the full time ministry after they had both passed the age of fifty.—Arthur Terry, District Superintendent.

### JURISDICTIONAL MEETING POSTPONED

A telegram just received announces that the meeting of the Jurisdictional Conference of the Woman's Society of Christian Service of the South Central Jurisdiction has been indefinitely postponed because of the new government ruling covering such meetings. This meeting was to have been held in Little Rock at the First Methodist Church, February 13-16.



# News About The Crusade For Christ



## EMMETT RAISES CRUSADE QUOTA OF \$1100.00

Rev. G. L. Cagle, in a long distance call, reports that his charge, Emmett, "went over the top" Sunday in the Crusade for Christ Campaign, raising their quota of \$1100. This fine charge is to be congratulated on this accomplishment.

## CRUSADE RALLY

More than 800 people from the churches of the Monticello District attended the District Crusade Rally at Monticello Sunday afternoon, January 14. Between 150 and 200 persons stood around the walls and in the three vestibules of the church. Ushers reported that not more than 15 or 20 of those who got inside the church left the meeting before it was over. The crowd alone was an inspiration of great value.

It is reported that throughout the series of rallies Bishop Martin and Dr. Warfield thrilled their audiences and brought messages of inestimable worth to the Crusade. They could not have been more effective anywhere than they were in Monticello. Reports from all the pastors of the district describe the zeal with which the delegates from their charges received the messages.

The Crusade Rally at Monticello has brought a great deal of encouragement to pastors and people. The opinion is generally expressed that the success of the rally is indicative of the success to come to all phases of the Crusade for Christ. —Arthur Terry, District Superintendent.

## KEISER - GARDEN POINT EXCEEDS QUOTA IN CRUSADE DRIVE

I am happy to report that this charge has paid in full, and over, its quota in the Crusade for Christ. Our people responded to the call very nicely. But why shouldn't they when they know for what the money will be spent? Our district superintendent tells us we are the third in the district to reach our quota. For this we are thankful.

Both churches seem to be doing fine considering the weather we have had thus far.

We have raised almost enough money to add four new Sunday School rooms to Garden Point Church and to do quite a lot of other work in side.

Our training schools are planned. The first one is to begin Feb. 11th at Keiser. Rev. Earle Cravens, pastor of Osceola Church, will be with us during that time.

Both churches showered the pastor and family during the holidays, with many gifts. Among the many worthwhile things given there were two turkeys and three pounds of precious rationed breakfast bacon. Several changes were made in this conference last November, but I seriously doubt if any minister was sent to a much better place or received a warmer reception than we have here.

We expect to close out this year's work with much success and many

## RECTOR FIRST CHURCH LEADS PARAGOULD DISTRICT

Rector First Church paid its Crusade for Christ quota of \$1300.00 in full on Tuesday afternoon, January 9. By the time of the Paragould District Rally \$1313.13 had been paid with more to come later.

This church was the first church in the Paragould District to pay its quota in full by the time of the District Rally.

## CRUSADE FOR INCREASE IN CHURCH SCHOOL ENROLLMENT AND ATTENDANCE

### SIGNS OF PROGRESS

#### Michigan

*Saginaw Bay District*—During the last week of September seven conferences were held in the interest of Church School advance, with 950 persons participating. Some schools promised to double their attendance, and an average increase of 31 per cent was set as the goal of the entire district. Teachers and officers, it is said, "are solidly behind the program."

*Oak Park Church, Flint, Michigan*, has been conducting an active attendance campaign, reports an increase from a recent low of 93 to well over 200, and expects soon to reach 300. The superintendent, a busy bank executive, gives a great deal of attention to the school, and is loyally supported by officers and teachers, and "by many laymen who are taking the program seriously and giving time and talent to its promotion."

In the *Marquette District* twelve meetings were held in September, bringing together 3,000 people to plan for Church School promotion. Keen interest was manifested and advance goals were eagerly accepted. In some cases increases as high as 100 per cent were pledged.

*Pinconning Church* has several teams at work making a community survey and reports already an increase of 30 per cent in Church School attendance.

#### North Carolina

At a meeting of the *Waynesville District*, on October 9, "many pastors reported increases in Sunday School enrolment," says Secretary Miles A. McLean.

*Ward Street Church, High Point*, reports, "We have a growing Sunday School."

souls won for Christ. God being our helper.

There are some on this charge who have not come to any of our services. This date marks about one quarter down and three to go during the conference year. How about coming in and helping us? We need you. We are missing you. You need the church.—Linley E. Vowell, pastor.

The Christian is one who sees other people's rights as clearly as his own.—Roy L. Smith.

Character is what a man is in the dark.—Moody.

#### Georgia

Gains in enrollment are reported from 23 charges in the *Columbia District*, and by all but four charges in the *Macon District*. Five new Sunday Schools have been organized.

*Thomasville District*—An increase of 345 in Sunday School enrollment was reported at a district rally held a few days ago.

"That Sunday School attendance be increased by a varied and more attractive program" is one of the five objectives announced by the *North Georgia Conference* Board of Lay Activities, Dr. Hubert Quillian, Conference Lay leader.

#### Here and There

The pastors and Church School superintendents of the *Jackson, Mississippi, District* spent three hours together on the evening of September 29, making plans to increase Church School enrollment. Slides were shown and a number of superintendents made brief addresses.

The *Lynchburg District, Virginia* Conference, out for an increase of 1,000 in 1944, has had gains already of 974 and expects soon to exceed its goal. *Gretna Charge* (Rev. L. P. Bland, pastor) leads with a net increase of 126, and *Board Street Church, Altavista*, (Rev. R. H. Forrester, pastor), is second with 102.

From *Marmaduke, Arkansas*, comes word that the Church School "is larger than it has been in ten years" and that 85 per cent of the enrollment are in average attendance.

L. W. Stringfellow, Superintendent of the *Southern District, New Hampshire Conference*, sends this report: "By means of an intensive program carried on last year, our decline in attendance has been reversed and turned into a slight gain, with 25 churches making gains against 16 that had losses."

"A sharp upswing in average attendance and more interest on the part of parents" are reported as the result of special efforts to interest parents in certain *Southern California-Arizona* communities.

Six new Sunday Schools have been organized in the *Huntsville District, North Alabama Conference*.

On October 1, *Roberts Avenue Church, Beaumont, Texas*, reported its Church School attendance already 20 per cent above the goal set for the year.

Rev. John H. Lewis, appointed to home mission work in the *Kentucky Mountains*, has organized two Sunday Schools, with enrollment of more than a hundred. He writes: "I enjoy my work very much as I carry the gospel to those who otherwise would have no religious service at all."

★ ★ ★ ★ ★

The world has become a neighborhood  
We Must Make It a Brotherhood

## RACE RELATIONS SUNDAY

February 11, 1945



For suggested program and other helps write

BOARD OF EDUCATION—THE METHODIST CHURCH

810 Broadway

Nashville 2, Tennessee

★ ★ ★ ★ ★



# THE CHILDREN'S PAGE

ANNIE WINBURNE, Editor



## IN STORYLAND

### WHEN THEY COME HOME

By Betram M. Van Ness

Two little boys sat on the fence and watched the big moving van back up to the porch. They saw the big movers lift heavy trunks on their strong backs. They were two unhappy little boys, for all they could say was, "I don't like."

"I don't like this street," grumbled Bobby.

"I don't like this house," grumbled Jack.

Father came up the walk with a load of books from the car, and he heard what Jack said. "Of course, it doesn't look like home. It isn't home yet."

Both boys looked up in surprise. "It takes a lot of work to make a home. Home is where people who love each other and play together. Everybody helps at home. Want to help carry books?" he asked.

So the two little boys walked behind the big moving man, and they carried their loads just as willingly.

"But it really isn't like home. There aren't any neighbors," Jack said sadly when father stopped a minute to rest.

Father looked up and down the street. He saw the pretty white cottage next door, and the red brick house across the street, where two tricycles waited on the porch.

"I am quite sure there are neighbors. Sometimes you have to be a neighbor first, you know."

Bobby and Jack looked up and down the lonesome street. No one was in sight. Then the screen door of the little white cottage opened slowly. They watched to see what would happen, for it seemed to be opening by itself. They saw why when a little brown dog dashed out the door dragging his leash after him, and then an excited lady came running out shouting and shaking her hands.

"Quick, Jack! You head him off, and I'll catch him," shouted Bobby.

Of course, two nimble-footed little boys were too smart for the little brown dog, and in no time at all they were carrying him back to his home.

"Thank you, thank you," she cried. "I wouldn't have had him run away for anything, for my little granddaughter loves him so. You are moving into the brown house, aren't you? Please tell your mother I'm coming over to see her when she is ready for company."

Eagerly the two boys ran home to report the news.

"She talked just like Mrs. West next door at the old home," Jack explained when he had told the story.

"It is a little bit like home," Jack said slowly.

"Of course," mother laughed gayly. "Now help me with these blankets, and you'll each have a bed to sleep in tonight."

So they went to work willingly, for it was fun to be making a home.

When the long day was over, and



### MY GRANDPA

When Grandpa comes he always tells  
Tales we all enjoy  
Of things that happened long ago  
When he was just a boy.

Of how the school he went to  
Was not a bit like ours  
And how he walked all of the way  
Through sun and wind and showers.

Of happy times by streams and wood,  
Of work at home each day,  
And then of happy hours spent  
In joyful, carefree play.

My Grandpa is just lots of fun,  
I always love him so,  
And except my Daddy  
He is the finest man I know.—A. E. W.

the movers had carried in the last load of boxes, mother sat down wearily.

"We'll get the supper," offered father. "Come on, boys, we can make toast."

Bobby pointed out the window excitedly. Across the way the lady in the white cottage was carrying something smoking hot in a big kettle.

Jack ran to open the door.

"I knew you must be tired," she said, "and I brought over some soup for your supper. No, I'll not stay to talk now. I'll be back tomorrow. Let me know if I can help," and off she went, leaving the delicious smelling soup on the table.

Father found the dishes while the boys hunted spoons. They sat down at their old places at the old table in the new dining room. They heard the old clock ticking outside in the new hall.

"Just a minute," said mother. And from a packing box she brought the party candlesticks and gay red candles.

Father lighted them. Then he bowed his head while he gave thanks to the Heavenly Father in the old familiar words the boys knew so well.

Jack looked across the table after the amen. "It's just like home," he said to his brother.

Bobby listened to the ticking

## JUST FOR FUN

A mother entered the room and saw her small son putting a bandage around his finger.

"You poor mite!" she said tenderly. "How did you come to hurt your finger?"

"I hit it just now with the hammer," said the child.

His mother was surprised.

"You brave boy," she said. "I didn't hear you cry."

"No," replied the boy blandly. "I thought you were out."—Clipped.

\* \* \*

Man in Water: "Quick! Throw me a life belt!"

Rescuer (a tailor): "Yes, sir! What size around the waist, sir?"

\* \* \*

"Please, Doctor, come to our house quickly."

"Why, who's ill?"

"Everybody but me. I was naughty and they wouldn't let me have any of the mushrooms father brought home from the woods."

clock. He watched the candlelight on his mother's face.

"It is home," he said happily. "I'm so glad we came."—The Story Hour Leader and The Biblical Recorder.

## WE SHARE EXPERIENCES

Bayou Meto, Ark.  
January 20, 1945

Dear Boys and Girls:

I am a little boy 10 years old. I have a little sister two years old.

My daddy is a Methodist minister. We take the Arkansas Methodist. I like to read the Children's Page.

My Sunday School teacher is Mrs. B. Parker.—Your friend, Kenneth Richert.

### A WALK IN WINTER

By Edith Dunn Bolar

Mother and Lucy and Dot and I  
Took a walk through the fields  
one day  
When the paths were frozen beneath our feet  
And the hills under white snow lay.

Crisscross, crisscross on the glistening snow  
Were the marks of many feet,  
Where the wild little things of the fields and woods  
Had searched for some food to eat.

We took from our pocket a goodly store  
Of crumbs and nuts and seeds,  
And scattered them there by the frozen path,  
Enough for the wild things' needs.

And I am sure when the squirrels and birds  
Found their feast we had laid that day,  
They must have been glad some kindly folks  
Had chosen to walk that way.

—Evangelical Messenger.

### LITTLE MR. BY-AND-BY

Little Mr. By-and-By,  
You will mark him by his cry,  
And the way he loiters when  
Called again and yet again.  
Glum if he must leave his play,  
Though all time be holiday.

Little Mr. By-and-By,  
Eyes cast down and mouth awry!  
In the mountains of the moon  
He is known as Pretty Soon;  
And he's cousin to Don't Care,  
As, no doubt, you're well aware.

Little Mr. By-and-By  
Always has a fretful "Why"  
When he's asked to come or go;  
Like his sister, Susan Slow.  
Hope we'll never—you nor I—  
Be like Mr. Bye-and-Bye.

—Selected.

Office Boy: "Please, sir, I think you are wanted on the phone."

Mike: "What makes you say 'you think'?"

Office Boy: "Well, someone at the other end said: 'Is that you, you old goat?'"—Boys' Industrial School Journal.



# Methodist Orphanage Report

## ANNUAL OFFERINGS RECEIVED TO DATE

We give below a report by charges and districts of the annual offerings received through January 18. We are very happy to not that substantial gains have been made over last year. At the top of the list we publish the larger contributions, including those charges sending in from \$200 up. We are deeply grateful for your fine cooperation and wish for each of you a happy and prosperous New Year.

—J. S. M. Cannon, Superintendent.

### LARGER CONTRIBUTIONS

Little Rock, First Church	\$1281.52
Texarkana, First Church	1200.00
Little Rock, Winfield	1056.00
Stuttgart, Grand Avenue	674.45
Pine Bluff, First Church	629.47
El Dorado, First Church	562.50
Ft. Smith, First Church	553.00
Camden, First Church	450.00
Sherrill	442.30
Conway	434.40
Benton	425.26
Pine Bluff, Lakeside	425.00
Cove	398.50
Little Rock, Pulaski Heights	369.28
Little Rock, Asbury	345.71
Warren	343.00
Clarksville	338.50
Malvern	320.00
Paragould, First Church	310.00
England	310.00
Pine Bluff, Carr Memorial	304.66
DeQueen	300.00
Stuttgart, First Church	300.00
Forrest City	285.00
Hope	278.95
Jonesboro, First Church	250.00
Carlisle	220.24
Fordyce	215.39
Hot Springs, First Church	211.00
Springdale	207.50
Lewisville Charge	204.15
DeWitt	200.00

### MEMORIALS

The following contributions were given by the second named person in memory of the first named persons:

James Tyler Gregg, Mrs. J. A. Gregg, mother	\$ 25.00
Mrs. Mary J. Fulkerson, Wesleyan Guild, Earle	5.00
J. A. Choate, Wesleyan Guild, Earle	5.00
Leonard Krumpen, Mrs. L. Krumpen, wife	100.00
Leonard Krumpen, Jr., Mrs. L. Krumpen, mother	100.00
Mary Mayo, Mrs. P. C. Mayo, mother	5.00
Mrs. Sarah Cole Harton, Mrs. Eric Heubner	3.00

### WAR BONDS

(Issue price of War Bond has been credited to the total offering of the various churches.)

Routh Furniture Co., North Little Rock (Credited to First Church, N. L. R., Conway Dist.)	\$ 25.00
Parker's Chapel, Camden District	100.00
Winchester Church, Monticello District	25.00
Weidemeier S. S. Class, Winfield, Little Rock District	25.00
Mrs. Lee Quattlebaum, Pine Bluff (Credited to Sherrill Church, Pine Bluff District)	500.00
Rev. and Mrs. Roy Fawcett, Little Rock, (Credited to Asbury Church, Little Rock District)	25.00
Kelsie Skinner, Cove, (Credited to Cove Church, Texarkana District)	500.00
Alma Church, Ft. Smith District (2 \$25.00 Bonds)	50.00
Des Arc Church, Little Rock District (2 \$25.00 Bonds)	50.00
Gillham S. School, Texarkana District	25.00
Clarksville Church, Ft. Smith District	25.00
Mena Church, Texarkana District (2 \$100.00 Bonds)	200.00
Waterloo Church, Prescott District	25.00
Cove Church, Texarkana District	25.00
Carr Memorial, Pine Bluff District (2 \$25.00 Bonds)	50.00

### INDIVIDUAL GIFTS

Mrs. R. H. Wolfe, Tillar	\$ 12.50
W. V. Howell, Clarksville	20.00
Mrs. R. W. Cole, Charleston	15.00
Sybil Farrish, Perry	45.00
A Friend	50.00
E. P. Blankenship, Warren	10.00
Mrs. O. T. Pitts, Cherry Valley	2.00
A Friend, Haynes	5.00
Mrs. Daisy D. Wepfer, Hot Springs	15.00
Henry Elliott, Board Camp	1.00
G. M. Barton, Buntyn, Tenn.	25.00
Chas. C. Anderson, Texarkana	5.00
Mrs. J. T. Word, Confederate Home	5.00
H. W. Trigg, Little Rock	5.00
O. D. Hadfield, Little Rock	5.00

Mrs. D. L. McKelvey, RFD, Paragould	1.00
Mrs. Luster Pratt, RFD, Paragould	2.00
Miss Ella Anderson, Ozark	5.00
Mrs. Rosa L. Canada, Little Rock	5.10
Chris H. Meyer, Pine Bluff	25.00
Mr. and Mrs. J. M. Barker, Sr., Atkins	10.00
B. P. O. E. Lodge, Little Rock	25.00
Arch Hall, Heber Springs	25.00
Mr. and Mrs. F. B. Chidester, Camden	20.00
A Friend, Little Rock	10.00
Francis Justice Miller, El Dorado	50.00
Mrs. A. G. Craver, Paragould	10.00
Mrs. Millie L. Eicher, Springdale	50.00
Sybil Johns Estate	50.00
Jack Dante, Dumas	5.00
Wesleyan Class, Stuttgart	5.00
Frances Turrentine, Little Rock	25.00
Mr. and Mrs. L. C. Owen, Cabot	50.00

### GIFTS FROM THE WOMAN'S SOCIETY OF CHRISTIAN SERVICE

(Amounts credited to individual churches)	
Calion Church	\$ 10.00
Whitten Church	9.00
Crossett Church	29.21
Cotter Church	10.00
First Church, N. Little Rock	15.00
Central Church, Fayetteville	5.00
Harrisburg Church	5.60
Chidester Church	15.00
Huttig Church	20.00
College Hill, Tex., Wesleyan Service Guild	5.00
Carlisle Wesleyan Service Guild	16.50
Earle Wesleyan Service Guild	10.00

### LITTLE ROCK CONFERENCE

#### ARKADELPHIA DISTRICT

Arkadelphia	\$120.00
Arkadelphia Circuit	28.96
Benton	425.26
Benton Circuit	38.70
Carthage-Tulip	38.00
Couchwood Circuit	20.50
Dalark	5.00
Friendship Circuit	17.50
Holly Springs	10.00
Hot Springs Churches:	
First Church	211.00
Grand Avenue	40.00
Oaklawn	72.00
Pullman Heights	50.00
Tigert Memorial	5.00
Fountain Lake Mission	5.00
Hot Springs Circuit	54.18
Keith Memorial	35.00
Leola Circuit	22.63
Malvern	320.00
Pearcy Circuit	10.07
Princeton Circuit	29.15
Sparkman-Sardis	135.00
Traskwood Circuit	57.00
Total	\$1749.95

#### CAMDEN DISTRICT

Bearden	\$ 49.50
Camden Churches:	
Fairview	52.00
First Church	450.00
Chidester Circuit	50.00
Ebenezer Circuit, Bethel Church	7.50
El Dorado Churches:	
First Church	562.50
Vantrease Memorial	50.00
Bethel	7.00
Wesley Chapel	23.15
Centennial Circuit	52.46
Emerson Circuit	44.25
Fordyce	215.39
Hampton Circuit	46.68
Harmony Grove Circuit	28.50
Huttig	45.00
Junction City Circuit	42.10
Kingsland Circuit, Kingsland Ch.	40.00
Louann Circuit	25.00
Magnolia Churches:	
First Church	179.00
Jackson Street Charge	108.25
Norphlet-Quinn	48.72
Parker's Chapel	74.00
Fredonia	130.88
Smackover	100.00
Stephens Circuit	146.40
Strong Circuit	66.00
Thornton Circuit	38.50
Waldo	30.00
Total	\$2712.78

#### LITTLE ROCK DISTRICT

Austin Circuit	\$141.49
Bauxite-Sardis	85.00
Bryant Circuit	70.50
Carlisle	220.24
Carlisle Circuit	27.67
Des Arc-New Bethel	57.00
DeValls Bluff	15.00
Douglasville-Geyer Springs	61.50
England	310.00
Hazen	67.81
Hickory Plains Circuit	14.00
Keo Tomberlin	63.00
Little Rock Churches:	
Asbury	345.71
Capitol View	100.00
First Church	1281.52
Forest Park	37.57
Henderson	80.00
Highland	141.87
Hunter	57.00
Oak Forest	15.00

Pulaski Heights	369.28
Scott Street	62.00
Twenty-Eighth Street	52.00
Winfield	1056.00
St. Marks	5.00
Lonoke	79.90
Mablevale	106.00
Primrose	164.57
Total	\$5076.63

#### MONTICELLO DISTRICT

Arkansas City	\$ 68.00
Crossett	129.21
Waller's Chapel	6.75
Dermott	86.96
Drew Circuit	19.58
Dumas	106.00
Eudora	81.00
Fountain Hill Circuit	16.50
Hamburg	88.00
Hermitage Circuit	56.65
Lake Village	71.25
McGehee	165.00
Halley Church	7.55
Monticello	176.00
Montrose-Snyder	50.00
New Edinburg Circuit	17.25
Portland-Parkdale	92.55
Tillar-Winchester	148.00
Warren	343.00
Watson-Kelso	95.00
Wilmar Circuit	17.05
Willmot	63.75
Total	\$1905.05

#### PINE BLUFF DISTRICT

Almyra	\$ 15.00
Alzheimer-Wabbaseka	46.00
Bayou Meto Circuit	82.00
Bethel-Redfield, Redfield Church	15.00
DeWitt	200.00
Gillett	115.00
Good Faith	15.00
Grady-Gould	141.00
Humphrey-Sunshine	75.00
Little Prairie Circuit	46.26
Pine Bluff Churches:	
Carr Memorial	304.66
First Church	629.47
Hawley Memorial	72.00
Lakeside	425.00
Pine Bluff Circuit	10.00
Rison	56.00
Roe Circuit	50.40
Rowell Circuit	27.00
Sheridan	75.00
New Hope	4.00
Sheridan Circuit	13.00
Sherrill-Tucker	466.00
St. Charles Circuit	35.00
Star City	72.18
Stuttgart Churches:	
First Church	300.00
Grand Avenue	674.45
Swan Lake	27.00
White Hall	18.80
Total	\$4010.22

#### PRESCOTT DISTRICT

Antoine Circuit	\$ 46.89
Amity	24.00
Point Cedar	2.00
Bingen Circuit	33.20
Blevins Circuit	15.00
Center Point Circuit	9.60
Dierks Circuit	52.16
Forester	26.00
Gurdon	132.00
Whelen Springs	11.00
Glenwood	18.50
Hope	278.95
Langley-New Hope	6.36
Mineral Springs Circuit	41.00
Mt. Ida	15.00
Murfreesboro-Delight	70.00
Nashville	100.00
Okolona Circuit	70.55
Prescott	148.75
Prescott Circuit	72.15
Springhill Circuit	54.00
Washington Circuit	61.85
Total	\$1288.96

#### TEXARKANA DISTRICT

Buckner Circuit	\$ 22.25
Cherry Hill Circuit	17.50
De Queen	300.00
Doddridge Circuit	34.75
Foreman	27.50
Fouke Circuit, Silverino Church	10.00
Hatfield Circuit	423.78
Horatio Circuit	84.00
Lewisville-Bradley	204.15
Lockesburg Circuit	54.72
Mena	148.00
Richmond Circuit	66.45
Sardis-Shiloh	15.00
Stamps	100.29
Taylor Circuit	90.65
Texarkana Churches:	
College Hill	38.82
Fairview	119.37
First Church	1200.00
Texarkana Circuit	52.00
Winthrop Circuit	20.00
Total	\$3029.23
Total for Little Rock Conference	\$19,709.82

#### NORTH ARKANSAS CONFERENCE

##### BATESVILLE DISTRICT

Ash Flat	\$ 7.80
Batesville Churches:	
Central Avenue	43.26
First Church	100.00
Bethesda-Cushman, Bethesda Ch.	5.00

Calico Rock	11.00
Cave City-Powell's Chapel	20.00
Cave City Circuit	3.00
Cotter-Gassville	29.85
Evening Shade Circuit	15.00
Melbourne Circuit	18.75
Moorefield-Sulphur Rock	5.00
Mountain Home	32.00
Mountain View	17.29
Newark	10.00
Newport Churches:	
First Church	20.00
Umsted Memorial	10.00
Salem	31.56
Tuckerman	75.00
Viola Circuit	10.00
Weldon Circuit	58.00
Yellville	25.00
Total	\$547.51

#### CONWAY DISTRICT

Atkins	\$ 51.55
Belleville-Havana	30.00
Bethel-Cato	28.00
Conway, First Church	434.40
Conway Circuit	33.63
Danville	7.79
Dardangle	25.00
Greenbrier Charge	11.65
Lamar-Knoxville	17.20
Levy	40.00
Morrilton	100.00
Morrilton Circuit No. 2	4.00
North Little Rock Churches:	
First Church	193.65
Gardner Memorial	40.00
Washington Avenue	64.50
Ola Circuit	26.00
Oppelo	14.00
Perry-Perryville	84.40
Plainview Circuit	20.00
Plumerville	4.00
Pottsville	36.40
Russellville	50.00
Total	\$1316.18

#### FAYETTEVILLE DISTRICT

Bentonville	\$ 28.42
Berryville	25.00
Centerton Circuit	16.00
Cincinnati Circuit, Morrow Church	4.60
Elm Springs-Harmon	52.94
Farmington Circuit	25.00
Fayetteville Churches:	
Central	155.00
Bethel	20.00
Gentry	86.00
Gravette	8.00
Green Forest	15.51
Lincoln	12.44
Pea Ridge Circuit, Avoca Church	16.00
Prairie Grove	60.55
Rogers	26.35
Siloam Springs	40.00
Springdale	207.50
Springtown Circuit	15.00
Sulphur Springs	15.50
Viney Grove Circuit	11.50
Winslow	15.00
Total	\$806.31

#### FT. SMITH DISTRICT

Alma	\$167.00
Booneville	139.00
Branch Circuit	
Branch	13.94
Lowes Creek	8.95
Ratcliff	6.64
Cecil	1.50
Charleston Circuit	23.35
Clarksville	338.50
Ft. Smith Churches:	
First Church	553.00
Goddard Memorial	159.60
Grand Avenue	15.50
Midland Heights	40.83
Pine Street	17.35
Second Church	70.00
South Ft. Smith	12.00
Greenwood	37.80
Hackett Charge	22.00
Hartford	30.00
Hartman Circuit	42.31
Huntington	11.53
Kibler-City Heights	23.50
Lavaca	20.00
Magazine Circuit	13.50
Mansfield	16.00
Mulberry	22.00
Ozark	35.00
Paris	133.70
Prairie View-Scranton	21.15
Van Buren	83.46
East Van Buren-New Hope	56.00
Waldron	23.64
Waldron Circuit	12.22
Total	\$2170.97

#### HELENA DISTRICT

Aubrey Circuit	\$ 30.62
Colt Circuit	27.00
Cotton Plant	12.30
Crawfordsville	10.00
Earle	42.20
Elaine Circuit, Mellwood Church	3.00
Forrest City	285.00
Helena	80.00
Holly Grove	63.00
Hughes	15.00
Hulbert-Blackfish Lake	40.00
Marianna	70.00
Marion	100.00
Marvel	23.50
Vandale Circuit	44.20
West Memphis	100.00
Wheatley Charge	73.00

(Continued on page 16)

# The Arkansas Methodist Circulation Campaign

REPORT NO. 2—THROUGH SATURDAY, JANUARY 20

ARCADELPHIA DISTRICT—Quota 1211				
Charge and Pastor	New	Ren.	Not Due	Total
Arkadelphia, Bob Pool	9	74	3	86**
Benton, J. W. Hamilton	2	2	2	6
Benton Ct., J. B. Stanfield	14	31	2	45*
Carthage-Tulip, J. R. Martin	4	10	1	14
Holly Springs, W. E. West	7	25	2	32
Hot Springs:				
1st Church, W. B. Slack	28	36	2	66
Grand Avenue, J. D. Baker	10	31	1	41
Oaklawn, J. E. Dunlap	20	24	1	44**
Pullman Heights, Curtis Williams	1	1	1	3
Hot Springs Circuit, Chas. Baughman	16	70	12	98
Keith Memorial, C. R. Roy	11	25	1	36**
Malvern, J. L. Hoover	13	44	1	58**
Princeton Ct., J. C. Van Horn	9	15	1	24
Sparkman-Sardis, J. A. Newell				
Traskwood, J. W. Nethercutt				

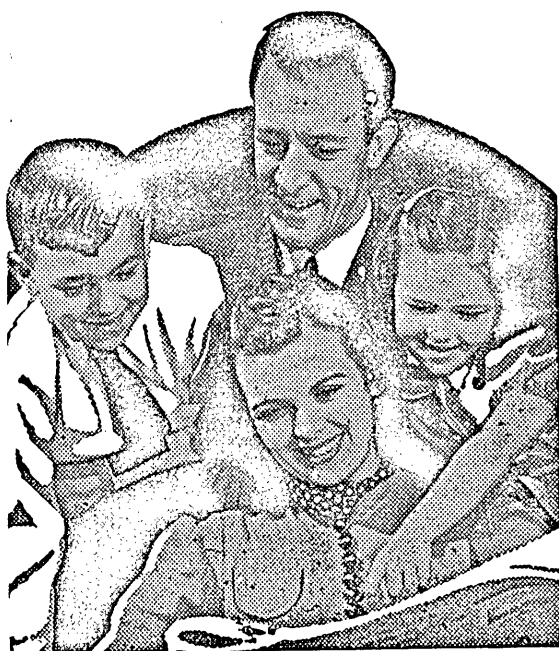
CAMDEN DISTRICT—Quota 1611				
Charge and Pastor	New	Ren.	Not Due	Total
Bearden, J. A. Henderson	15	17	1	33
Chidester, Kirvin Hale	17	56	2	73**
Ebenezer				
El Dorado 1st Ch., A. H. Freeman	46	111	1	157
Vantrease, C. H. Geissen	21	50	1	72**
Emerson Ct., W. M. Calloway		10		10
Hampton Ct., W. O. Tisdale	1	10		11
Huttig, G. W. Warren	9	21		30**
Junction City Ct., S. B. Mann	20	42		62**
Kingsland, R. S. Beasley	9	27		36**
Louann Ct., W. I. Small	6	16	20	42**
Magnolia, L. M. Starkey	15	63		78
Jackson Street, L. C. Gatlin	9	53		62**
Marysville, O. L. Daniels	10	3		13*
Norphet Ct., A. E. Jacobs	5	13		18
Parker's Chapel-Fredonia, T. D. Spruce	16	40		56**
Smackover, W. R. Burks	8	31		39
Stephens, H. E. Holland	14	55		69**
Strong Ct., C. C. Vanzant	21	37	1	59**
Thornton Ct., L. R. Sparks	8	29		37**
Waldo Ct., O. C. Birdwell	10	37		47**

LITTLE ROCK DISTRICT—Quota 2410				
Charge and Pastor	New	Ren.	Not Due	Total
Austin Ct., K. K. Carithers	17	13		30
Bauxite-Sardis, George E. Ruetz	7	12		19
Bryant Ct., J. T. Thompson	10	21	7	38
Carlisle, M. W. Miller	8	36	1	45
Carlisle Ct., C. H. Gilliam	1	4		5
Des Arc, New Bethel, O. L. Thompson		11		11
Douglasville-Geyer Springs, B. F. Fitzhugh	8	19		27
England, M. S. Monk	2	32		34
Hazen, W. R. Boyd	11	26	2	39*
Hickory Plains Ct., Wendell Hoover	5	12		17
Little Rock 1st Church, Aubrey Walton	48	32		80
Asbury, Neill Hart	70	74		144
Capitol View, H. O. Bolin	30	67		97**
Forest Park, L. E. N. Hundley	3	11		14
Henderson, Alfred Doss	12	45		57
Highland, O. E. Holmes	16	56		72
Hunter Mem., W. C. Watson	12	21	1	34
Oak Forest, A. H. Dulaney	8	8		16*3
Pulaski Heights, E. D. Gallo-way	20	62	5	87
Scott St., John McCormack	26	14		40
28th Street, C. H. Farmer	18	35		53**
Winfield Mem., Kenneth Spore	80	16	4	100
Winfield, J. D. Montgomery	4	32	1	37
Lonoke, J. D. Montgomery	5	13		18*
Mabelvale, Alfred de Black				

MONTICELLO DISTRICT—Quota 995				
Charge and Pastor	New	Ren.	Not Due	Total
Arkansas City, J. H. Cummins	4	15		19*3
Crossett, R. E. Simpson	24	21	7	52
Dermott, W. D. Golden	2	43	1	46
Drew Ct.	5	11		16
Dumas, R. F. Sorrells	10	61		71*2
Eudora, I. A. Love	6	29	2	37**
Fountain Hill Ct., A. R. Wingfield	10	10		20
Hamburg, J. L. Tucker	9	44		53*
Hermitage Ct., A. J. Bearden	15	19	1	35**
McGehee, R. A. Teeter	4	43	6	53
Monticello, C. E. Whitten	14	62		76**
Montrose-Snyder, W. T. Bone	8	13		21**
New Edinburg, A. N. Stonecipher	3	33		36*
Palestine-Sumpter, C. B. Davis	2	2		4
Portland-Parkdale, R. H. Cannon	4	27	1	32**
Tillar-Winchester, J. E. Majors	10	65	3	78**
Warren, D. R. Robinson	13	146		159**
Wilmar Ct., Roy Bevans	12	5		17
Winnet-Miller's Ch., Bob McCammon	8	22		30**

PINE BLUFF DISTRICT—Quota 1346				
Charge and Pastor	New	Ren.	Not Due	Total
Almyra, Welton Meeks	3	10		13**
Altheimer-Wabbaseka, Fred Schwendemann	36	68		104*4
Bayou Meto Ct., Herschel Richert	6	31		37**
DeWitt, H. H. Pinnell	18	70		88
Gillett, H. D. Ginther	7	36		43**
Grady-Gould, C. B. Wyatt	6	40		46**
Little Prairie Ct., R. L. Diffee	3	27		30**
Pine Bluff, 1st Church, W. E. Brown	16	55		71
Carr Mem., Virgil D. Keeley	23	69		92**
Hawley Mem., C. D. Cade	23	38		61**
Lakeside, T. T. McNeal	55	65		120*
Pine Bluff Ct., G. P. Fikes	1	1		2
Rison, Geo. W. Robertson	13	35	2	50**
Roe Ct., C. R. Andrews	2	18	2	22
Rowell Ct., J. R. Diffee	17	60		77**

\* Indicates that charge has reached quota.  
 \*\* Indicates that charge has exceeded quota.  
 \*2 Indicates charge doubled quota.  
 \*3 Indicates charge trebled quota.  
 \*4 Indicates charge quadrupled quota.



Charge and Pastor	New	Ren.	Not Due	Total
Sheridan-New Hope, J. A. Simpson	14	34		48**
Sherrell-Tucker, A. W. Hamilton	7	18		25**
St. Charles Ct., J. W. Rushing	16	11		27
Star City, Noel Cross	17	24	13	54
Stuttgart 1st Church, Otto Teague	9	40		49
Stuttgart Grand Ave., John B. Hefley	5	50		55
Swan Lake, R. L. Riggins	11	16		27*4
Whitehall, W. B. Lockhart	8	5		13**

PRESCOTT DISTRICT—Quota 1102				
Charge and Pastor	New	Ren.	Not Due	Total
Amity, E. T. Miller	6	24		30**
Bingen Ct., R. R. Coley	5	19	1	25
Blevins Ct., T. M. Armstrong	5	34		39
Center Point Ct., E. B. Adcock	12	13		25
Dierks, Joe Robinson	3	41	2	46
Emmett Ct., Geo. L. Cagle	4	14		18**
Forrester, R. C. Walsh	11	45	2	58**
Gordon, S. T. Baugh	20	84	1	105**
Hope, R. B. Moore	1	6		7
Langley-New Hope, George Townsend	9	46	4	59
Mineral Springs Ct., W. C. Lewis	8	36		44**
Mt. Ida Ct., W. S. Cazorl	11	51		62**
Murfreesboro-Delight, Eldred Blakeley	6	31		37
Nashville, J. W. Mann	13	27		40
Okolona Ct., A. C. Rogers	2	7	4	13
Prescott Ct., C. D. Meux	35	41		76*
Springhill Ct., Osbourne White	5	27	3	35**
Washington Ct., D. L. McCauley				

TEXARKANA DISTRICT—Quota 1039				
Charge and Pastor	New	Ren.	Not Due	Total
Ashdown, J. E. Walker	17	45		62**
Buckner Ct., R. M. Crain	8	23		31**
Cherry Hill Ct., G. C. Bailey	5	4	2	11
DeQueen, H. D. Sadler	6	46		52**
Doddridge Ct., G. B. Pixley	3	19		22
Fouke Ct., R. D. McSwain	6	13		19
Hatfield Ct., S. W. Moaty	9	14	1	24
Horatio Ct., W. B. Savage	14	20	1	35
Lewisville-Bradley, M. E. Scott	22	58		80*
Lockesburg Ct., L. G. Wilson	15	31		46
Mena, B. F. Roebuck	6	69	2	77**
Richmond Ct., W. C. Onstead	11	28		39**
Sardis-Shiloh, W. W. Fincher	12	5		17**
Stamps, J. A. Wade	5	35	3	43**
Taylor Ct., E. H. Martin	2	10		12
Texarkana First Church, C. M. Reeves	16	152		168
College Hill, C. T. Parsons	18	20		38*
Texarkana Fairview, F. L. Arnold	19	31		50
Texarkana Circuit, E. T. McAfee	6	14	6	26
Winthrop Ct., O. C. Robison	5	13	1	19**

BATESVILLE DISTRICT—Quota 881				
Charge and Pastor	New	Ren.	Not Due	Total
Ash Flat	3	6		9
Batesville 1st Church, H. L. Wade	59	160		219**
Batesville Central Ave., Ewing T. Wayland	88	68		156*2
Bethesda-Cushman, Grover Sutherland	10	21		31
Calico Rock, J. C. Wilcoxon	5	20	7	32
Cave City, C. L. Fry	12	29		41**
Cave City Ct., R. M. Porter	5	13		18**
Cotter-Gassville, C. E. Patton	6	18	1	25**
Desha Ct., T. O. Love	1	21		22
Elmo-Oil Trough, J. B. Stewart	7	11		18*
Evening Shade Ct., W. T. Watson	3	15		18
Melbourne Ct., R. E. Lee	8	31		39**
Moorefield-S. Rock, Woodrow Woods	4	31		35**
Mountain Home, J. J. Clark	6	24	3	33**
Mountain View, Thurston Masters	6	13		19**
Newark-Pleasant Hill, J. M. Hughes	3	28		31*
Newport 1st Ch., Jefferson Sherman	6	34	1	41
Umsted Mem., J. W. Howard	7	30		37
Pleasant Plains, Uriah Smith	6	21		27**

Charge and Pastor	New	Ren.	Not Due	Total
Salem	3	13	1	17
Swift-Alicia, H. C. Minnis	6	29		35**
Tuckerman, H. H. Blevins	4	32		36**
Weldon Ct.	2	15		17*
Yellville Ct., Faris McDonal	6	5	2	13*

CONWAY DISTRICT—Quota 1356				
Charge and Pastor	New	Ren.	Not Due	Total
Atkins, R. A. Dorman	2	27	2	31
Belleville-H., B. A. McKnight	5	23	3	31*
Bethel-Cato, W. M. Womack	1	8		9
Conway 1st Church, E. W. Harris		1		1
Jardanelle, E. W. Faulkner	4	27		31
Danville, H. J. Couchman	2	21		23
Dover-London, B. E. Robertson	4	16		20
Gravelly Ct., A. W. O'Bryant	3	20		23**
Greenbrier Ct., Byron McSpadden	7	9	2	18
Lamar-Knoxville, J. F. Weatherford	4	9	2	15
Levy, T. C. Chambliss	12	20		32**
Morrilton 1st Church, W. J. Spicer	6	84		90**
Morrilton Circuit No. 1, M. B. Short	17	14		31
Morrilton Ct. 2, Thomas Kinslow	1	1		2
Naylor Ct., William Wilder	19	78	6	103
North Little Rock, 1st Church, A. D. Stewart	48	78		126**
Gardner Memorial, G. C. Taylor	20	31	1	52**
Washington Ave., E. J. Holifield	5	7		12
Ola Ct., J. L. Leonard	4	11		15*
Oppelo, C. E. Crozier	6	21	2	29**
Perryville-Perry, George Stewart	12	24	3	39**
Plainview, W. L. Russell	1	9		10
Plumerville Ct., Jack Long	23	13		36
Pottsville, J. E. Linam	32	75		107**
Russellville, E. B. Williams	2	11		13
Vilonia Ct., L. H. Peck				

FAYETTEVILLE DISTRICT—Quota 910				
Charge and Pastor	New	Ren.	Not Due	Total
Bentonville, L. M. Conyers		1		1
Berryville, J. L. Johnson	14	12		26**
Centerton		4		4
Cincinnati Ct., Walter Pennel	11	12	1	24**
Elm Springs Ct., David P. Conyers	3	43		46**
Eureka Springs, J. W. Coonts	8	11	1	20**
Farmington Ct., Arnold Simpson	6	1		7
Fayetteville Central, P. V. Galloway	7	53		60
Fayetteville, Bethel, E. D. Lewis	5	10		15*2
Gentry, Geo. Q. Fenn	3	20		23
Gravette-Decatur, J. E. Thomas	8	21		29
Green Forest, O. R. Findley	9	20		29**
Lincoln, W. W. Warrington	10	16		26**
Madison County	4	8		12
Monte Ne, Harold Johnson	1	3		4
Pea Ridge, M. L. Edgington	2	7		9
Prairie Grove, Alf Eason	11	50		61*2
Rogers, J. T. Randle	25	26	1	52
Springdale, V. E. Chalfant	16	55	1	72
Springur Springs, J. C. Gibbons	7	12		19**
Siloam Spgs., J. T. Byrd	20	21		41
Springtown Ct., Ervin R. Wilson	1	14		15*
Viney Grove Ct., O. E. Houser	11	15	1	27**
Winslow, William Sherman	4	4		8

FORT SMITH DISTRICT—Quota 1577				
Altus-Alix, W. W. Peterson .....	6	10	.....	1
Alma, A. L. Riggs .....	4	23	.....	2
Bonanza, Chas. Pachl .....	2	5	.....	7
Booneville, I. L. Claud .....	5	64	3	72
Branch Ct., James Smith .....	12	27	.....	39
Charleston Ct., J. R. Chandler ....	7	20	.....	27
Ft. Smith 1st Ch., F. G. Roebuck .....	24	32	.....	56
Goddard Memorial, E. H. Hook .....	54	67	3	124
Midland Heights, W. A. Downum .....	1	38	3	42
Pine St., .....	2	10	.....	12
Second Ch., John Bayliss .....	6	18	1	25
South Ft. Smith, Lester Weaver, .....	2	23	1	26
Greenwood, O. D. Peters .....	13	40	.....	53
Hackett, J. C. Cofer .....	1	1	.....	2
Hartford, F. G. Villines Sr. ....	8	16	1	25
Hartman, Frank Shell .....	8	30	.....	38
Huntington Ct., Clarence Weinand .....	9	8	.....	17
Kibler-City Heights, Theron McKisson .....	3	10	.....	13
Lavaca, C. R. Nance .....	21	23	.....	44
Magazine Ct., L. R. Ruble .....	5	10	.....	15
Mansfield, Chas. Wages .....	6	17	.....	23
Mulberry, W. J. Faust .....	3	14	.....	17
Ozark, J. M. Barnett .....	17	38	.....	55
Paris, J. H. Hoggard .....	18	31	1	50
Prairie View-Scranton, J. F. Glover .....	4	20	.....	24
East Van Buren, V. F. Harris....	8	15	.....	23
Waldron, J. M. Harrison .....	7	33	3	43
Waldron Ct., C. L. Martin .....	13	20	1	34





# They Shared A Pair Of Scissors



By S. E. EVANS

"If, in sharing a paint brush or a pair of scissors, a child learns that another benefits from its use, our program has not been in vain," affirms the Rev. Giles C. Brown, Methodist pastor on John's Island, South Carolina, evaluating the vacation school program conducted during the summer months of the church's ministry as "an adventure in service."

"In the warp and woof of missionary activity is closely interwoven the idea of sharing," continues the pastor. Pastor Brown describes the program in terms of the limited educational background of the rural child, especially the Negro child, on John's Island, the child who has to most only a few months of school, some

illiterate, but as yet comparatively "uncontaminated" by the "vices" of modern civilization. The island whose land is fertile but low, is about five miles long and two miles wide.

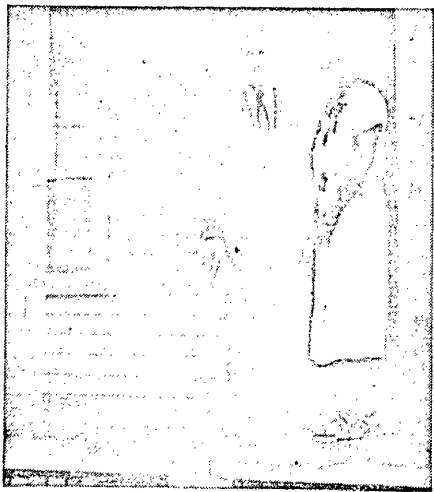
Teaching by example has proved the most convincing method. The parsonage, neatly painted and surrounded by flowers, the garden, chickens, ducks, and the pastor's wife's pantry, well-stocked with fruits and vegetables she has canned, challenge the people to "go and do likewise." A number have done so. New homes have been built after the parsonage pattern. Many lessons remain to be learned, however. The women need instruction in canning (in which they would be more interested if cans or jars were available), in pre-natal care, meal planning, sewing, mending and home beautification. Men need to study improved methods of farming, carpentry, and the care of livestock.

Progress is being made in health education. To thwart a possible epidemic at the time of the 1939 tornado, typhoid inoculation was suggested. Afraid of the idea, the people rebelled until the pastor subjected his arm to the needle. Then they complied without protest.

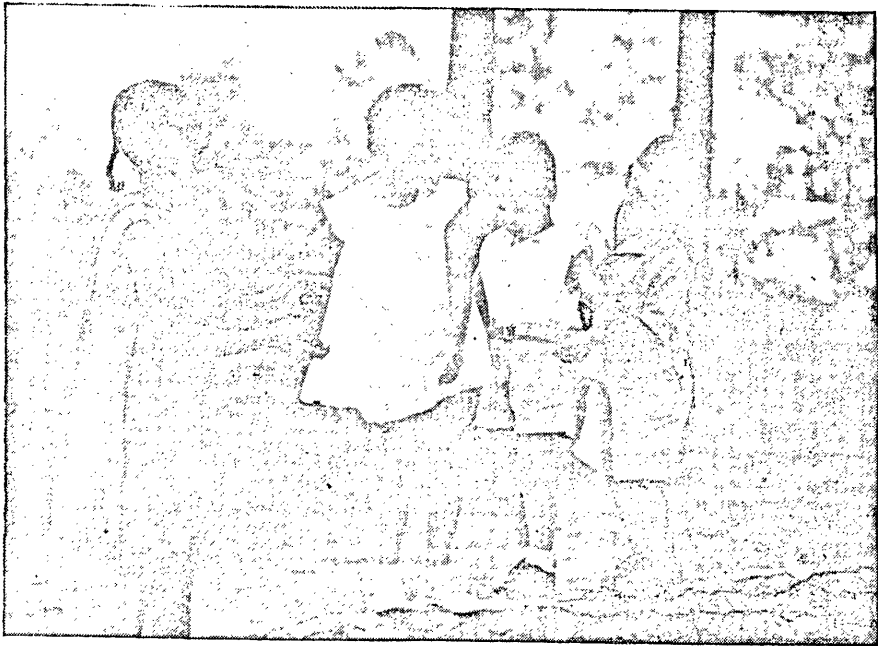
number being served; the St. James Church once a month is opened for a mid-wife clinic. Each of these is in charge of a county health nurse. Wesley Church is being used for lectures, motion pictures on better farm living and pictures on health, also for forum discussion when the farmers meet with the county farm agents. All of the meetings are being well attended. Much more effective work could be accomplished if the community building, included in the funds to be raised by the Crusade for Christ, were already erected.

The needs today are too great for the Browns to meet alone. Also included in the enlarged program are plans for a trained agriculturist with some knowledge of recreation; a woman worker, trained in home economics who can visit in the homes of these people and help them with their problems. Suitable living quarters for these workers should be included in the center, also an automobile for them to use in their work.

Good roads and rural electrification are opening this cheap land to newcomers from the mainland. What the church does must be done quickly to strengthen and fortify already well established faith of these people in things



The Rev. Giles C. Brown and wife, St. John's Island, South Carolina



Children at play, St. John's Island, South Carolina

of which are winter months, and is further handicapped by bad roads, inadequate clothing and no transportation facilities.

"Our vacation school touched the lives of seventy-nine children with some influence that pointed to God. We cannot evaluate in tangible terms the merits of the project. Our very great need is that of a trained leadership. Those who will accept this great challenge as a real opportunity for a particularly neglected group."

During the seven years since the Browns first went to John's Island as the first pastor and his wife to make their home among the people of the island, they have built a parsonage and two of the island's three churches have been repaired and remodeled. They have won the confidence and love of the people among whom they serve devotedly. Almost the entire population of the island is Negro. The people are descendants of a cargo of slaves cast ashore there because they could not be landed on the mainland. They are backward, neglected and

Because there is no community hall churches are used increasingly for all types of gatherings. The Bethlehem Church is used as a clinic for children once a month with a large

that really count and will endure. It must help people to help themselves, to improve their standards of living and to share with one another.

## THE ARKANSAS METHODIST CIRCULATION CAMPAIGN

(Continued from page 8)

Charge and Pastor	New	Ren.	Not Due	Total
Hulbert-Black Fish, C. H.				
Harvison	3	10		13*
Marianna, S. G. Watson	9	46		55
Marion, A. N. Storey	8	35		43**
Marvel Ct., J. W. Glass	4	18		22**
Parkin, A. W. Harris	9	17		26
West Helena, J. W. Watson	16	31		47**
West Memphis, Kenneth Shamblin	11	36		47*
Wheatley, R. L. McLester	22	41		63**
Widener-Round Pond, G. E. Patchell	7	42		49**
Wynne, J. O. Whitworth	48	77		125**
JONESBORO DISTRICT—Quota 1151				
Black Oak, W. B. Yount	7	26	5	38**
Lake Street, Bates Sturdy	13	36	13	62**
Eono Ct., Elvis Wright	40	24	1	65**
Brookland, Winfred Diggs	1			1
Dell Ct., L. K. Wilson	1	12		13
Dyess, R. W. Minton	2	9		11
Gosnell, R. L. Hanks	6	19		25**
Harrisburg, W. A. Lindsey	5	24		29
Joiner, J. W. Moore	8	14		22**
Jonesboro 1st Church, C. R. Culver	39	75	1	115
Fisher St., G. L. McGhehey	1	18		19**
Huntington Ave., E. E. Stevenson			1	1
Jonesboro Ct., W. T. Lingo				
Keiser L. E. Vowell	11	16		27**
Lake City, S. N. Adams	9	26		35
Luxora, C. W. Lewis	5	11		16
Marked Tree, J. A. Womack	8	36	3	47**

Nonette, J. L. Shelby	8	16		24*
Nettleton-Bay, Gaither McKelvey	10	29		39**
Osceola, Earl Cravens	1			1
Truman, O. L. Cole	13	18	1	32**
Turrell, A. C. Stark	7	5		12
Tyronza, L. F. LaFever	20	23		43**
Weiner Ct., Porter Weaver	9	75		24
PARAGOULD DISTRICT—Quota 1030				
Beech Grove, E. C. Hance	7	8		15
Biggers, J. M. Williams	1	18		19**
Corning, B. C. Few	26	35	2	63**
Gainsville, Alfred Gibbs		8		8
Hardy, Miss Fern Cook	17	7		24**
Hoxie, C. C. Burton		15	1	16
Knobel, P. W. Emrah		9		9
Leonard Ct., J. H. Holt	11	33		44**
Mammoth Spring-Black Rock, B. W. Stallcup	1	1		2
Marmaduke, Harold Spence	5	23	2	30**
Marmaduke Ct., Gus Evans	3	8		11
Maynard Ct., W. G. Conner	5	2	5	12
Paragould 1st Church, Guy Ames	26	101		127**
Paragould, Griffin Memorial, R. E. Wilson	2	29		31
Paragould Ct., R. B. Howerton	2	8		10
Piggott, C. W. Good	5	23	1	29**
Pocahontas, H. E. Pearce	12	27		39
Rector Ct., L. L. Langston	2	5		7
St. Francis Ct., C. A. Brannon	16	26		42**
Stranger's Home, Henry Trotter	9	18		27**
Walnut Ridge, R. E. L. Bear-den Jr.	13	44	2	59
SEARCY DISTRICT—Quota 1039				
Antioch, M. L. Kaylor	11	28		39*
Augusta, S. O. Patty	6	42	2	50*
Bald-Knob, H. D. Womack	1	23		24
Cabot, Roy Bagley	12	29		41**

Clinton, Virgil Hanks	6	40		46**
Damascus, Hoy M. Lewis	2			2
Griffithville, J. W. Harger	5	7		12
Harrison, W. F. Cooley	15	53		68
Heber Springs, 1st Ch., W. W. Allbright	1	42		43**
Central, J. H. Smith	9	18		27*2
Hunter Ct., Linza Harrison	6	13	1	20
Jacksonville, W. H. Harrison	4	10		14
Judsonia, F. A. Lark	3	8		11
Kensett, H. A. Stroup		17		17
Leslie, E. J. Reaves	8	26		34**
McCrary, Ralph Hillis	3	32		35
McRae Ct., J. M. Talkington		10		10
Newton County, T. C. Huff	1	5	1	7*
Pangburn, C. J. Wade	12	9	1	22
Quitman, C. E. Gray		26		26
Rose Bud, W. C. Smith	15	26		41*2
Searcy, C. N. Guice	9	75	3	87
Valley Springs, T. R. Whiddon	10	20		30**
SUMMARY OF DISTRICTS				
Charge and Pastor	New	Ren.	Not Due	Total
Pine Bluff	317	822	17	1156
Little Rock	421	672	21	1114
Camden	260	723	23	1006
Helena	266	731	3	1000
Batesville	266	685	15	966**
Ft. Smith	269	663	17	949
Conway	252	640	21	913
Monticello	163	672	21	856
Texarkana	193	645	16	854
Prescott	156	550	17	723
Searcy	139	559	8	706
Jonesboro	224	454	24	702
Fayetteville	186	439	5	630
Paragould	163	448	13	624
Arkadelphia	142	408	18	568
TOTALS	3417	9111	239	12767



## The Church... and the Countryside

By GLENN F. SANFORD

### DEVELOPMENT OF THE TOWN AND COUNTRY CHURCH

(This is the first in a series of articles setting forth the general principles of the Group Ministry work which is part of the rural program.)

Arkansas, like most other states, was churchd by an ever expanding circuit system. You will recall how Methodism spread over the state. Among the very first Methodist preachers to enter Arkansas was Eli Lindsey. He had a circuit in 1816 ranging from the Missouri line to a point on Little River near the present town of Judsonia. In that same year Philip Davis and William Stephenson were assigned to Arkansas. The former was assigned to the Spring River Circuit and the latter to the Hot Springs Circuit. These two circuits embraced all of Arkansas, separated by the Arkansas River. As new preaching points were established new circuits were formed and new preachers were assigned. This plan was followed until most every frontier settlement in Arkansas had a Methodist church. These brave men gave to us our Arkansas Methodism.

The early centers grew into villages and towns. The churches at these centers became larger and stronger. The pastor often lived at the village because it was easier to serve the surrounding area from this central location. The open country churches, or "outposts" as they were sometimes called, were still attached to the village church and under the care of the same minister. There were no "station" churches at that stage of development.

In the early years of the twentieth century the churches in the villages, towns, and cities increasingly sought independence from their country brothers and demanded the full time service of a minister. The open country churches were then left on a circuit wholly independent of the station charge. This gave great strength to the localizing of their religious interests and zeal at the expense of a true mission spirit. If there were not enough country churches close enough to form a circuit they were left without pastoral supervision and many of them were soon forgotten. The churches forming a circuit were often so widely scattered that it was impossible to develop a charge unity. Close pastoral supervision was not possible. Under this system the churches on the circuit have not developed as they should.

The trend toward the establishing of "Station" charges was the direct result of the national economic system at that time. Monopolies developed out of the belief that any person, or group of persons, had a full right to anything for which they could pay, regardless of the

welfare of others. Thus, in the church, a group of people, regardless of how few or how many, had the right to demand the full time of a pastor if they could pay the necessary salary regardless of what happened to the weaker churches on the charge. This same spirit prevails in some sections of the church today. For the greatest spiritual welfare of the people no church should have more than six or seven hundred members. New churches should be established to take care of communities with a larger church constituency. This is not a criticism of those who hold to that policy for it has come to us in the normal way. The government passed the "Sherman Act" to prevent economic monopolies. We hope the church as a whole will soon follow again the pattern of the economic world along this line. When a church acquires all it can for itself with no responsibility for the immediate surrounding area it has lost its home mission spirit and has little regard for the future of Methodism.

The shift of church membership from the rural to the urban centers, along with the decrease in rural population, has so weakened the circuit churches that it is now difficult to maintain a pastor. One can clearly see what the future holds if the present system continues. There is a way to strengthen the work of the church in rural areas. Our conference must discover the necessary adjustments and move as a unit on this common interest.

### EVANGELISM AND CHURCH SCHOOL GAINS ARE VITAL PART OF CRUSADE PROGRAM

DECATUR, ILL.—District Superintendent Donald H. Gibbs has written as follows to Bishop J. Ralph Magee, Crusade director:

"I think that the churches are entering into the other aspects of the Crusade in an enthusiastic way also. It is very gratifying the number that are reporting much larger Church School attendance. Also, there are some very fine reports of new members received. Among the small churches there are these that report a fine growth in membership already this year:

"Elwin, Rev. Kenneth Plummer, 12 new members; Marshall, Rev. Eugene Wisely, 19; Martinsville, Rev. A. E. C. Pentland, 16; Newman, Rev. Richard Atherton, 21, and Tuscola, Rev. J. W. Armstrong, 20. All of these will receive many more during the Lenten season."

We never fully believe the salesman who does not use his own merchandise.—Roy L. White.

### ACTION ON PEACETIME CONSCRIPTION

Taken by

The Methodist Conference on Christian Education

The Methodist Conference on Christian Education in full session at Nashville, Tennessee, January 1, 1945 went on record as follows:

As a national Conference on Christian Education we wish to register most vigorous opposition to the proposed action by Congress for universal military conscription of American youth in peacetime.

Further, we instruct the president and secretary of this conference to send a copy of this action to the President of the United States, and to the chairman of the Military Affairs Committees of the Senate and of the House of Representatives.

Further, we instruct that copies of this action be sent to the Methodist press.

In support of this resolution we would urge all members of this conference to act promptly in securing similar action from all possible churches, groups, and individuals, requesting them to register their opposition with the President, the above-mentioned chairmen, and the senators and representatives of their own constituency.

We would urge co-operation with other groups and organizations in education and action on this issue.

We earnestly appeal to the bishops of The Methodist Church to lead the church in united expression of opposition to this threat to our democratic and Christian way of life.

### RICH TREASURES

The Bible contains rich treasures for the soul. It is a mine of wealth to the one who explores its sacred pages. And yet few know its great value.

"A man in the State of New Jersey fell heir to a large family Bible in the year 1874. His aunt, who died, left this instrument in her will: 'To my beloved nephew I will and bequeath my family Bible and all it contains, with the residue of my estate after the funeral expenses and just lawful debts are paid.'

"The estate amounted to only a few hundred dollars, which soon vanished and the Bible was laid upon a shelf, where it lay for thirty-five years, unappreciated, unopened. The gentleman became poverty-stricken, and in his old age decided to go to his son's home.

"In packing his trunk for the journey, he had occasion to get down the family Bible. As he leafed through it, he found hidden among its leaves five thousand dollars in bank notes. All these thirty-five years they had lain hidden between its covers, and he had lived in want and distress!

"There may not be bank notes hidden away in our Bibles, but there are treasures within the covers which money can not buy. Shall we live in spiritual feebleness and want, and then, at the end of life's journey or in old age, find that we had vast treasures at our command which have laid unused and neglected?"—Selected.

Translate your resolutions into definite deeds, or else you will forget them.

### LITTLE ROCK CONFERENCE TRAINING PROGRAM

Believing that the training of the leadership has a central place in the building of a more effective Church School program, we are planning schools and classes over the Little Rock Conference, where at all possible and practical. Since it will be impossible to get into every situation personally, we ask that interested pastors and Church school superintendents please contact our office and we shall be glad to cooperate in arranging for whatever type of work may be most needed.

#### At Foreman and Ashdown

Beginning last Sunday, I spent the first part of this week with Rev. C. A. Simpson and his people at Foreman, leading the study, "How to Improve the Church School." The last half of the week, I have been with Rev. Frank Walker and his workers at Ashdown, leading in the same series of discussions.

#### At El Dorado

With the chairman of our Conference Board, Rev. Alfred H. Freeman, as host pastor, a three-unit school will begin at El Dorado, next Sunday, the 28th. Dr. Robert W. Goodloe, of Southern Methodist University, will teach the course, "Christian Beliefs," Rev. Rufus F. Sorrels of Dumas will direct the study of "Recreation" and Mrs. Roy Scales, Director of Children's Work for the Louisiana Conference, will lead the children's workers in "Teaching Children." This school is not only for First Church but for other churches that may find it possible to have representation.

#### Bible Conference at Stuttgart

Following the El Dorado school, Dr. Goodloe will go to Stuttgart for a three-day Bible Conference, Feb. 3-5, sponsored by Grand Avenue and First Church. The host pastors, Revs. John Hefley and Otto Teague, cordially invite interested workers from nearby churches to take advantage of this unusual opportunity.—Roy E. Fawcett.

### TWO MORE DISTRICTS GO OVER TOP IN CRUSADE APPEAL

CHICAGO—On January 2, Rev. J. Edgar Purdy, superintendent of the Salem, Ore., District, wired Bishop J. Ralph Magee, Crusade for Christ director, that churches of the district had reported pledges and cash of \$51,000, which was more than the quota. According to reports received in the Crusade headquarters office here, this is the first district in the Western Jurisdiction to report success.

The Shreveport-Monroe District, Louisiana Conference, Central Jurisdiction, had pledges to cover its quota of \$9,000 by December 11, reports Rev. Jesse D. David, superintendent. Here's how Dr. David did it, in his own words: "I selected four men, three ministers and one layman, and took them in my auto to make personal contacts in out-of-the-way places. Each man would discuss a different phase of the Crusade program, and the results were marvelous. Nothing beats personal contact with people."

Everyone ought to go to church to get closer to folks.

# WOMAN'S SOCIETY OF CHRISTIAN SERVICE

MRS. SUE M. WAYLAND, Editor

## LITTLE ROCK TO ENTERTAIN JURISDICTIONAL CONFERENCE

The South Central Jurisdiction of which our two Conferences are a part, will be entertained in Little Rock at the First Methodist Church, Feb. 13-16.

This Jurisdiction consists of the following states: Nebraska, Kansas, Oklahoma, Missouri, Arkansas, Louisiana, Texas, and New Mexico. The body of the conference will consist of delegates from these states, and a large number of members from the General Division. Mrs. George S. Sexton Jr. of Shreveport, La., is president of this Jurisdiction and will preside over the conference sessions.

Mrs. J. D. Bragg, of St. Louis, Mo. President of the Woman's Society of Christian Service of The Woman's Division of our Church will be present. Also a number of the leaders of the different departments of the Woman's Division will be present and take part on the program.

Arkansas has three of the Jurisdictional officers living in the state: Mrs. H. King Wade, of Hot Springs, Secretary of Cultivation and Promotion; Mrs. E. W. Potter, of Jonesboro, Recording Secretary and Mrs. Peter Kittel of Forrest City, Secretary of Missionary Education.

This Conference affords rare opportunity for the women of our state and I am sure all who can will attend.—Sue M. Wayland.

## COTTON PLANT ELECTS OFFICERS

The first meeting of the new year of the Cotton Plant Society met at the church. Mrs. J. D. McGregor, retiring president led in prayer and introduced the new president, Mrs. Norman Houston, who took charge of the meeting. Mrs. E. F. Leighton, local treasurer, gave a detailed report of expenditures for the past year and reported a nice balance in the treasury. Offering was made by members to the Flower Fund.

Miss Mildred Hamilton reported having sent a \$25.00 War bond to Scarrett College, at Nashville, Tenn.

A Committee composed of Mesdames W. A. Arthurs, J. D. McGregor, and Will Ringer were appointed to meet with a committee from the other churches to make the programs for the World Day of Prayer to be held in February.

Mrs. Will Bengel presented a very inspiring program after which the following officers were elected for next year: president, Mrs. N. E. Houston, vice-president, Mrs. W. I. Booe; recording secretary, Miss Mildred Hamilton, treasurer, Mrs. W. L. Bengel; corresponding secretary, Mrs. Frank Angelo; local treasurer, Mrs. E. F. Leighton; secretary of Missionary Education, Mrs. A. L. Crittenden, Jr.; secretary of Christian Social Relations and Local Church Work, Mrs. W. A. Arthurs; secretary of Student Work, Mrs. A. L. Crittenden, Sr.; secretary of Young Women and Girls Work, Mrs. Jack Keith; secretary of Children's Work, Mrs. R. McFarland; secretary of Literature and

## SOUTH CENTRAL JURISDICTION

The South Central Jurisdiction Woman's Society of Christian Service will meet in First Methodist Church, Little Rock, Arkansas, February 13-16, 1945.

Open sessions will be held Wednesday, Thursday, and Friday, closing at noon. Bishop Paul Martin will lead the worship services each day. A Workers' Conference and meetings of standing committees are scheduled for Tuesday. Dr. Paul Womeldorf, executive secretary for the jurisdiction, will speak at a council dinner Tuesday evening.

Missionary speakers from war-devastated areas will be Miss Catherine Liu of China and Miss Ruth Lawrence, who has recently returned from Poland. Other missionaries of the jurisdiction who are home on furlough and workers from institutions and stations in the Southwest will also present the work of their fields.

Guests and speakers from the Woman's Division will include Mrs. J. D. Bragg, Miss Henrietta Gibson, Mrs. Eloise A. Woolever, Miss Marian Conrow, Mrs. Helen Bourne, Miss Noreen Dunn, Miss Mary Lou Barnwell, Miss Grace Steiner. Miss Winnie Buckels of Jackson, Mississippi, will be a special guest speaker.

The Lafayette Hotel has been designated headquarters.—Mrs. George S. Sexton, Jr., President.

## ASBURY INSTALLS OFFICERS

The officers of the Woman's Society of Christian Service for the Asbury Church were installed at the evening service Sunday, Jan 7th at 7:30, at which time the pastor, Rev. W. Neill Hart, preached on the subject "Modern Women and Religion."

The officers installed are as follows:

President, Mrs. C. J. Clark; vice-president, Mrs. N. W. Marshall; corresponding secretary, Mrs. M. M. Couch; recording secretary, Mrs. J. Paul Faulkner; treasurer, Mrs. James Allen; secretary of Missionary Education, Mrs. Richard Nelson; of Student Work, Mrs. Neill Hart; of Youth Work, Mrs. H. E. Peckham; of Children's Work, Mrs. Wade Davis; of Spiritual Life, Mrs. Grady Adkins; of Christian Social Relations, Mrs. Robert Glass; of Literature and Publications, Mrs. Isa Stockton and of Supplies, Mrs. B. J. Wilcox. The different chairmen are as follows: Status of Women, Mrs. C. M. Bennett; of Publicity, Mrs. Royce Nottage; of Membership, Mrs. E. P. Ingram. Circle chairmen: 1, Mrs. H. L. Bond; 2, Mrs. Robert Ghent; 3, Mrs. Ed Jones; 4, Mrs. Roy Sanders; 5, Mrs. Fred Strickland; 6, Mrs. J. T. Reveley. President of Wesleyan Guild, Mrs. E. E. Ashbaugh.—Reporter.

Publications, Mrs. Joe McGregor; secretary of Supplies, Mrs. Warren Fraser.—Reporter.

The learned preachers who declare that the world is losing faith should consider the number of hair restorers on the market.—Boston Shoe and Leather Reporter.

House rent is so high now, it is odd that people don't stay at home to get their money's worth.—Sumter Daily Item.

## GEYER SPRINGS W. S. C. S.

1944 was a year of worth while achievements for the Geyer Springs W. S. C. S. under the faithful leadership of Mrs. Roy Huffstutlar as president.

We are beginning a new year full of enthusiasm, courage and faith. We have adopted, as a theme song, the China-born song: "I Will Trust and Not Be Afraid."

Our January devotional was from 2 Tim. 2:3. Each member of the Society adopted a New Year's resolution to be a "Good soldier of Jesus Christ" in 1945.

We are deeply interested in "The Crusade for Christ" and are indeed grateful for the privilege of having a part in this great movement.

Our pastor, Bro. Fitzhugh, had charge of the installation service which was very impressive. The following officers were installed:

President, Mrs. Roy Huffstutlar; vice-president, Mrs. S. E. Whitwell; treasurer, Mrs. Horace Wilson; recording secretary, Mrs. Willis Wilson; corresponding secretary, Mrs. J. L. Jaynes, secretary of Christian Social Relations and Local Church Activities, Mrs. E. C. Meyer; secretary of Missionary Education, Mrs. A. C. Fisher; secretary of Supplies, Mrs. H. C. Rowland; Spiritual Life chairman, Mrs. E. S. Stevenson; Membership chairman, Mrs. B. F. Fitzhugh; Fellowship chairman, Mrs. J. D. Jones; secretary of Children's Work, Mrs. Willis Wilson; secretary of Literature and Publication, Mrs. H. C. Rowland; secretary of Publicity, Mrs. E. S. Stevenson.—Reporter.

Making light of troubles will help you to see the way clear.—Cleveland Press.

No feeling of satisfaction quite equals that of having done a difficult job extremely well.—Ex.

## SHERIDAN INSTALLS OFFICERS

The Woman's Society of Christian Service met at the Methodist church on January 8. Mrs. J. A. McCoy was leader for the worship hour. The subject was "Behold I Have Set Before You An Open Door." Mrs. Sorrells led the prayer. Our pastor, Rev. James A. Simpson, had charge of the installation service.

A program was beautifully rendered as a number of our members took part.

The members elected for the New Year are as follows:

Mrs. Lester Sorrells, president; Mrs. J. H. Williams, vice president; Mrs. Jack Williams, recording secretary; Mrs. Manson Jordan, corresponding secretary; Mrs. J. A. McCoy, treasurer; Mrs. Adrian Johnson, secretary of missionary education and service; Mrs. O. R. Williams, secretary of Christian Relations and local church activities; Mrs. Mack Williams, secretary of children's work; Mrs. Ben Arnold, sec. of literature and publications; Mrs. Lee Williams, sec. of supplies; Mrs. Fred Jordan, sec. of young women's and girls work; Mrs. Ralph Springer, sec. of students work; Mrs. M. K. Rogers, sec. of spiritual life.

The business session followed the installation service. Our efficient president, Mrs. Lester Sorrells, presided. Pledges were made for the new year to carry on the work. Bro. Simpson left us with many helpful thoughts and remarks.

The social hour was enjoyed by all.—Reporter.

## FAIRVIEW - TEXARKANA INSTALLS NEW OFFICERS

All Circles of the Fairview Methodist Church met Monday afternoon at 2:30 p. m. at the church for the first meeting of the year. Mrs. C. I. Parsons gave the devotional which was taken from Revelations 3:8. Mrs. R. L. Roper sang a solo, "Standing at the Portal of Another Year."

Mrs. Earl Miller was leader of the program, "Behold, I have set before Thee an Open Door," and gave a talk on the doors of progress for 1945. Mrs. K. L. McCain also talked of the progress through the open door, which was enlarged on by the recordings of women through whom the work that has been accomplished there.

During the impressive pledge service led by Mrs. L. J. Thompson candles were lighted by the officers of the society and all members brought their pledges to the altar. At the close of the pledge service Rev. Arnold presented a Life Membership from the society to Mrs. C. I. Parsons, retiring president, for her devoted services throughout the years.

At the social hour, refreshments were served by the Circle chairmen, Mrs. Joe Birts, Mrs. Raymond Nichols, and Mrs. K. L. McCain. Thirty-five members were present.—Mrs. W. A. McMannis.

You can overcome timidity by forgetting yourself.



# CURRENT NEWS IN THE RELIGIOUS WORLD

## RELIGIOUS GROUPS URGED BY ODT TO CANCEL MEETINGS

WASHINGTON, D. C. (RNS)—Religious organizations "definitely" are included among those who "will have to show how the war effort would suffer if the meetings were not held" after February 1, a spokesman for the Office of Defense Transportation asserted here. The statement followed an announcement by Col. J. Monroe Johnson, chairman of the War Committee on Conventions, drastically banning all group meetings after that date.

The committee, composed of five high-ranking military and government leaders approved an application form required of organizations planning group meetings to be attended by more than 50 persons. Questions asked by the committee include:

Is the planned meeting a convention, conference, trade show, or government meeting? What are the dates and location of the proposed meeting and what hotels or other facilities will be used? What attendance is expected? How frequently were meetings held previously?

Application forms will be available at all ODT regional and district offices, at most hotels, convention bureaus and from the national ODT office in Washington. Applications must be filed not later than 30 days before the proposed conference, convention, or group meeting, but not more than six months in advance.

Even issuance of a special permit does not guarantee transportation or hotel facilities or imply priorities for their use, the committee stated, adding that even groups of less than 50 persons should not meet unless absolutely essential.

## UNITED CHRISTIAN COUNCIL FOR DEMOCRACY APPROVES DUMBARTON OAKS' PROPOSALS

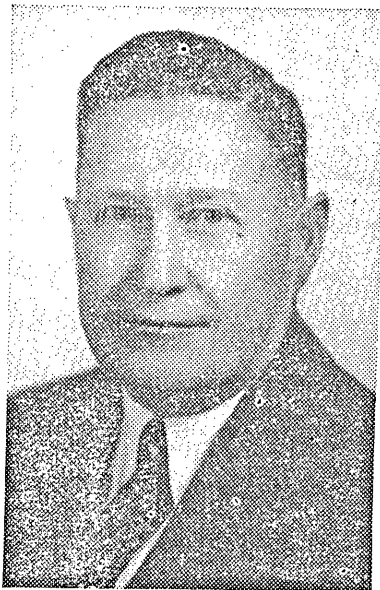
NEW YORK (RNS) — Approval of the security proposals made at Dumbarton Oaks was announced here by the United Christian Council for Democracy, composed of six unofficial denominational social action groups, but the Council urged several specific modifications, amendments, and additions in the final charter.

The State Department was called upon "for prompt action in opening the proposals, with all suggestions for their amending and completion, to full discussion by the United Nations, convened in early conference if that be at all practicable."

"We believe the Organization should be established immediately," the Council said.

Cooperating organizations in the Council are Evangelical and Reformed Council for Social Reconstruction, Presbyterian Fellowship for Social Action, Unitarian Fellowship for Social Justice, Church League for Industrial Democracy (Episcopal), Methodist Federation for Social Service, and Rauschenbusch Fellowship of Baptists.

## NEW ASSOCIATE MISSION TREASURER



Dr. Albert Edward Beebe, superintendent of the Brooklyn North District of the New York East Conference, and resident of Brooklyn, N. Y., was elected associate treasurer of the Division of Foreign Missions of the Board of Missions and Church Extension, and as associate treasurer of the entire Board, at the annual meeting of that body at Buck Hill Falls, Pa. Dr. Beebe will take over the new post at the completion of his term as superintendent in April next. Born in Liberty, N. Y. Dr. Beebe was educated at Pennington Seminary, Wesleyan University, Yale Divinity School, and took post-graduate studies at New York University and Drew Theological Seminary. Hamline University and Wesleyan University have both honored him with degrees of Doctor of Divinity.

## CATHOLICS OPEN CANTEEN IN CAIRO FOR NEGRO TROOPS

LONDON (By Wireless) — The Catholic Women's League here has announced the opening of a canteen in Cairo, Egypt, for Negro troops in that area. The canteen is expected to remain open for the duration of the war, although several other canteens have closed since the end of African and Near East campaigns.

## SENATE HEARS CHURCH RESOLUTION PROTESTING COMPULSORY MILITARY TRAINING

WASHINGTON, D. C. (RNS)—A resolution protesting against the enactment of legislation to provide compulsory military training, passed by the Christian Citizens Committee of Wilmington, Del., was laid before the Senate by Vice-President Henry A. Wallace. The resolution was referred to the Committee on the Judiciary.

## MEMBER OF MAORI RACE ORDAINED AS PRIEST

WELLINGTON, New Zealand (By Wireless) (RNS)—The first member of the Maori race to become a priest has been ordained at St. Patrick's Church at Napier, Hawke Bay, by the Most Rev. Thomas O'Shea, Roman Catholic Archbishop of Wellington. He is 30-year-old Father Wirimu To Awhitu, who has been carrying on missionary work among his own people for the past two years.

## THREE FAITHS GREET DE GAULLE

PARIS (By Wireless) (RNS)—Leaders of the Protestant, Roman Catholic, and Jewish faiths brought greetings to General Charles de Gaulle at a New Year audience here. The callers were Emmanuel Celestine Cardinal Suhard, Archbishop of Paris; Pastor Marc Boegner, head of the French Reformed Church; and Dr. Julien Weill, Chief Rabbi of Paris.

## ARKANSAS LEGISLATURE GETS MARRIAGE REFORM BILL

LITTLE ROCK, Ark. (RNS) — A marriage reform law, asked by the Little Rock Ministerial Alliance and by Methodist and Baptist state conventions, was the first bill introduced in the House of Representatives when Arkansas' 55th General Assembly convened.

The bill would require a three-day waiting period before issuance of marriage licenses, and a medical examination of both contracting parties.

## CLERGYMAN OPENS FLYING SCHOOL FOR MISSIONARIES

WINONA LAKE, Ind. (RNS)—A school to train missionaries, ministers, and other religious workers to pilot airplanes has been opened near here by the Rev. Paul C. Hartford, formerly of Pontiac, Mich., and known as "The Flying Preacher."

First enterprise of its kind, the school will be located a short distance from the Winona Lake religious conference grounds. It will be known as "Victory Sky Pilots, Inc."

Arriving here recently in a plane equipped with skis as landing gear, Mr. Hartford has begun to construct dormitories for out-of-town students. Missionaries will be taught to fly in what the school head calls "grasshopper ships."

Mr. Hartford's venture follows closely on predictions of religious leaders that the airplane will revolutionize post-war missionary activities in isolated territories. Plans for extensive use of planes were revealed here last summer by the Christian and Missionary Alliance. Several other church groups have also started to use planes in Northern missions, and many more seem likely to follow suit when mission activities are expanded after the war.

When one speaks without thinking, he is apt to say what he is thinking.—Printopics.

## NEW SOCIAL PROJECTS TO BE LAUNCHED BY METHODIST WOMEN IN MEXICO

MEXICO CITY (RNS)—Two new social projects will be inaugurated this year for women and children by the Federation of Methodist Women's Missionary Societies, it was announced at the Federation's annual assembly here. One project will be concentrated in the rural district, and the other in Mexico City, to assist working mothers in the care of their children.

With the president Rebecca M. de Perez presiding, delegates, including four women pastors, reported on missionary work among the poor Meztizos, and Indians of eight states, including Guanajuata, scene of recent Catholic-Protestant clashes, Puebla, Hidalgo, Vera Cruz, Tlaxcala, Mexico, and Morelos.

In addition to religious teaching, missionaries taught women and children to cook, sew, and care for babies, and dispensed social and medical care to the poor. Methodist missionaries, a spokesman said, have been teaching the Indians to read and write for almost 70 years, before the Government announced its national "Alfabetismo" campaign to teach the illiterate. Now, it was said, teachings will be intensified.

Contributions to the Federation reached 5,600 pesos in 1944, raised in Mexico. With the exception of four or five missionaries from the United States, all workers in the women's group are Mexicans.

## BISHOP MCCONNELL ASKS NEW SOCIAL OUTLOOK

ATLANTIC CITY, N. J. (RNS)—A social system which produces "a few men at the top" at the expense of 100,000,000 others violates the rights of man as a citizen of society, Bishop Francis J. McConnell, of New York, told the National Conference on the Ministry of the Church to Shifting War Workers.

The Methodist bishop shared the platform with Emil Rieve, president of the Textile Workers Union and vice-president of the CIO, representing labor, and Morse Dell Plain, president of the Welsbach Engineering company, of Philadelphia, representing industry, in a discussion of full employment after the war.

Bishop McConnell said that a policy of every-man-for-himself is not a statesmanlike approach to the post-war concern of 11,000,000 service men.

Stating that the church must justify its results in human terms, Bishop McConnell said,

"One of the glories of Christianity has been that it has always attempted the impossible. We must do the best we can in trying to reach an impossible goal. There is no possibility of arranging things so that every man will be contented, but we can and must aim at the impossible and refuse to allow the impossibility of the ideal of perfection to make us complacent."

A true friend is the ively—the greater the ruin, the closer it clings.—E. W. Griffith.

# CURRENT NEWS IN ARKANSAS METHODISM

## THE HENDERSON MINISTERIAL FELLOWSHIP ORGANIZES

The ministerial students of Henderson State Teachers College, Arkadelphia, have organized "The Henderson Ministerial Fellowship." We have a fine organization composed of the following: Miss Helen Martin, Joe Hunter, Forney Harvey, Mrs. K. K. Carithers, Charles Baughman, David Hankins, Osborne White, Clyde Swift and Wesley Reutz.

We are very fortunate to have the splendid cooperation of Rev. J. E. Cooper, district superintendent, and Rev. Bob L. Pool, pastor of the First Methodist Church of Arkadelphia.

Dr. Matt Ellis has very graciously given of his time to the above students in teaching a course in the New Testament.

We earnestly covet the prayers of all.

The Ministerial Association, the M. C. A., the Y. W. C. A., and the faculty have bought four religious paintings to be hung in the dining hall. This movement was started by the ministerial students on our campus.

The paintings are by the artist, Asman, and they are sometimes called the "Pictures You Can't Forget." They are 20½ x 24½ inches and will be hung between the windows on the north side of the dining hall. The four paintings are "Head of Christ," "Gethsemane," "Christ at Heart's Door" and "The Lord is My Shepherd." These pictures will be dedicated in assembly sometime soon.—David Hankins, Jr.

## MOOREFIELD-SULPHUR ROCK CHARGE

We are very glad to be back on the Moorefield - Sulphur Rock charge for the second year. We have been graciously received and have been given a nice pounding at each place. We also received several Christmas gifts from Moorefield.

The work has started off fine. Our finances are up to date. We have increased our Benevolences thirty-three and one-third per cent last two years and have them out seventy-five per cent paid this year.

At our first Quarterly Conference Sulphur Rock Church paid the following funds in full: Bishop, General Administration, Jurisdictional District Work.

The apportionment for the bishop's residence was \$10.00 and that has been paid. Our offering for Children's Home was \$19.00.

We have received our apportionment for the Crusade for Christ and we feel sure it will be paid.

On January 13 we had a very impressive service at Moorefield when another joined the church and had her baby baptized. Her husband is serving with the Armed Forces overseas.

We have exceeded our quota for Arkansas Methodist and it has been sent in.

We feel like with God's help we have a great year in the Mas-Kingdom.—Woodrow Woods, pastor.

## HELENA DISTRICT ITEMS

The Crusade for Christ Rally of the Helena District held in the First Methodist Church in Forest City January 10th, was a great occasion. Mrs. R. E. Connell, conference president of the W. S. C. S. and E. Wainwright Martin, conference director of Lay Activities, spoke in the afternoon and each did a splendid job.

The women of the Forrest City church served dinner to 125 persons who attended the afternoon meeting.

At 7:30 o'clock the church was filled to capacity to hear Dr. Gaither Warfield and Bishop Paul E. Martin. Each was at his best.

The Colt Charge has raised in cash more than its quota. At least eight other charges have guaranteed their quotas and there seems to be no doubt that the district quota, and more, will be raised.

Reports indicate that the quota for the Arkansas Methodist will be met. Several charges have exceeded their quotas.

The Quarterly Conference accepted more than \$2,000.00 in excess of the apportionment on World Service and Conference Benevolences.

Plans are now definitely under way to increase our Church School attendance and to prepare our leadership for better service.

The pastors are doing a fine work and the people are following their leadership.

The new Methodist Church in West Memphis will be opened Easter Sunday.—District Reporter.

## "GOD GIVE US YOUTH!"

"We need Christian workers throughout the world desperately; not all of them missionaries: some in the expanding outposts of the Government, some serving through humanitarian organizations, some as representatives of American industry, but all giving evidence of profound Christian faith and experience," says the Rev. James E. McElDowney, Methodist missionary on the staff of Leonard Theological College, Jubbulpore, India. "How much better for Christian youth to fill these responsible positions than those whose actions might reflect on not only Christianity in general but also on the good name of our nation. And we need clean, wholesome youth pouring through our churches as missionaries. The need is desperate. Yes, we need money, but we need American flesh and blood as a more unmistakable proof that we Christians are in earnest and willing to live as well as die for what we believe is eternally right. God give us youth!"

## PRAYER FOR THE WEEK

Gracious Savior, who hast asked all the weary and heavy-laden to come to Thee with all their anxious thoughts and troubled hearts, we come to Thee for strength, courage, and faith. Graciously receive us, unworthy though we be. Forgive us all our sins, and fill our souls with peace, and put our minds at ease as we trust in Thee, who are our Lord, our Friend, and our Redeemer. Amen.

## OAK FOREST PASTOR AND WIFE REMEMBERED

On Wednesday evening before Christmas the congregation of the Oak Forest Methodist Church gave to their pastor and wife, Rev. and Mrs. A. H. DuLaney, a great and happy surprise, a beautiful Christmas tree and an old fashioned pounding. At the close of the mid-week prayer service, the Church School superintendent, E. E. Harrison, requested all present to retire to the Children's Department. As the door swung open we beheld one of the most beautifully decorated and lighted trees we had ever seen and round about it all kinds of good things for the parsonage pantry. But to make the occasion more impressive, Rev. H. E. Wheeler, one of our members and teacher of the Adult Class, with well chosen words, welcomed the new pastor and wife, assuring them the whole-hearted cooperation of the church and predicted for them the greatest year in their ministry. The pastor responded with restrained emotion, expressing very great appreciation both for the gifts and the givers, and pledging his prayers and greatest efforts that the highest ambitions of all Christians might be realized in the growth and development of the new church in the extension of the Kingdom into a field white unto harvest.

The occasion was one of inspiration, good fellowship, and goodwill. After all gifts had been loaded in the pastor's car which filled it to the brim, all departed feeling that it had been good to be there and wishing each for the other the happiest Christmas ever experienced.

The pastor and wife desire to express their gratitude and appreciation to all who have so graciously welcomed them to the city of Little Rock and to the Little Rock Conference.—A. H. DuLaney.

## SHARE YOUR RELIGION

Nearly every real blessing of our lives may be increased by sharing it with others. Even such prosaic things as food and shelter mean more to our happiness when there are loved ones to enjoy them with us. A walk in the park or an automobile ride are more enjoyable if we have pleasant companionship, and our daily toil would become mere drudgery if it were for ourselves alone. So it is with our religious experience. "Go . . . tell," said Jesus to one and another of those whom he had blessed. Our faith means less to us if kept locked up in our breasts than if we help others to find the same joy that we know in him. "Whenever I think of the heavenly treasure," says Dr. F. W. Boreham, "I pity two men. I pity the man who fails to possess it; and I pity the man who, possessing it, fails to pass it on."—Christian Observer.

## THE CHURCH TODAY

Outwardly splendid as of old—  
Inwardly sparkless, void and cold—  
Her force and fire all spent and gone—  
Like the dead moon she still shines on. — William Watson.

## HENDRIX COLLEGE NEWS

### Dr. Goddard Speaks For Crusade

The Crusade for Christ now being conducted by the Methodist Church promises to be one of the most far-reaching movements ever undertaken by any religious group, Dr. O. E. Goddard of Conway said this past week in an address at Hendrix. The spontaneous response of people to the financial program even before an organized appeal has been made is unlike anything in his experience of more than fifty years of fund-raising, he said.

### Crusade Funds For Rural Economics

Fifteen thousand dollars from funds now being raised through the Methodist Crusade for Christ have been tentatively assigned for rural rehabilitation work in Arkansas, with the work to be administered through Hendrix College, it was recently announced. A department of rural social economics was instituted at Hendrix last fall by Dr. A. C. Ellis and the rehabilitation work will presumably be administered through this department, it was said.

Of the \$25,000,000 Crusade goal a little more than \$200,000 is at present assigned for special services by colleges to "assist the church in more effectively performing and fulfilling its mission." Hendrix is one of 12 institutions selected for such service, others including Birmingham Southern in Alabama, and Millsaps in Mississippi.

The program is wholly tentative at present, it was said, and no doubt subject to change if goals of the Crusade change. Hendrix, it was said, is ready to serve the Church in the rural program if called on and has already indicated its feeling such work holds great value by having instituted the rural life department last fall.

### Books Added to Library

Five hundred and twenty titles have been cataloged for use by the Hendrix library since September 1944, Dr. H. W. Kamp, director of the library, recently announced. The library now consists of over 47,000 titles.

Among the new books accessioned since the first of the year are many of the latest novels, most popular autobiographies, and a number of books by Arkansas authors.

### De La Fuente-Owen Recital

James de la Fuente, violinist, and Mrs. Benjamin Owen, pianist, both music instructors at Hendrix, were presented by the musical department in a public recital of sonatas for violin and piano January 15.

The program, representative of the classic and romantic periods in music, included Beethoven's sonata in F major, op. 24; sonata in E flat major by Mozart, and Sonata in A major by Brahms.—Russ.

No greater harm can come to religion than to be divorced from the common economic life of man, and no greater harm can come to the economic life of man than to be divorced from religion.—Samuel M. Shoemaker.

## NORTH ARKANSAS CONFERENCE EDUCATION NOTES.

By Ira A. Brumley

## Regional Conferences

The North Arkansas Conference is being represented in the Regional Conference on Summer Agencies and Recreation, Oklahoma City, January 22-27, by the following persons; Rev. and Mrs. T. C. Huff, Thomas R. Whiddon, James T. Randle, J. T. Byrd, David Conyers, Martin A. Bierbaum, J. M. Barnett, Raymond A. Dorman, Roy Bagley, H. O. Eggensperger, Ivan H. Grove, Charles McDonald, Glenn F. Sanford, James S. Upton, and Ira A. Brumley.

Six of these regional conferences are being conducted by the General Board of Education for the purpose of preparing district and conference leadership for camps and assemblies; and local church recreational leadership.

## North Arkansas Church School Superintendents' Conference

A Church School Superintendent's Conference for Church School superintendents of the North Arkansas Conference is to be conducted at Conway, Hendrix College, February 12-13.

Bishop Paul E. Martin will give the opening address following a devotional led by Rev. H. M. Lewis, district superintendent of the Conway District. The Conference will open at 2:00 p. m. on Monday, February 12th.

Dr. J. Q. Schisler of the General Board of Education, will be the Discussion Group leader.

Other speakers on the program will be Dr. Fred Stone, one of the Publishing Agents of the Methodist Church; Dr. Paul O. Womeldorf, Executive Secretary of the South Central Jurisdiction; and Mr. M. E. Lee, a Church School Superintendent of Dallas, Texas.

The reports to date concerning attendance are very encouraging. Twelve Church School superintendents from each District are being invited to attend. Any Church School superintendent of the North Arkansas Conference, interested in attending, but not having yet being invited should write to Board of Education, Hendrix Station, indicating his or her interest in attending the Conference.

Since space is limited, persons should make reservations for rooms early.

The purpose of this Conference is to help our Church School superintendents to a better understanding of their work and the task of the Church School in the "Crusade for Christ" period.

## Helena District Church School Institutes

Under the leadership of the district superintendent, Rev. Grover C. Johnson, a series of Church School Institutes have been planned for January 29-February 2, as follows: Brinkley, January 29; Holly Grove, January 30; West Helena, January 31; Marianna, February 1; and Earle, February 2.

All the churches in the territory near these centers are being invited to share in these Institute programs.

## March Membership Month

The State Crusade Council, representing Little Rock and North Arkansas Conferences, in session in Little Rock, November 21st,

voted to set the month of March as a special time for giving emphasis to increasing Church School membership and attendance. There is to be some emphasis throughout the four years of the "Crusade for Christ," in the interest of Church School membership and attendance. But such periods as March of this year will be designated as times for special emphasis. No one should wait until March to begin this work, but should make the most of the month of March.

The Church Schools of the North Arkansas Conference have a better record as to Church enrollment and attendance than many of the conferences of Methodism, but our Conference is falling far short of meeting its responsibility in providing Christian teaching for people for whom the Methodist Church in North Arkansas is responsible. We must do a greater job.

There are thousands of members of our local Methodist churches not attending the Church School. Will you check your church rolls against your Church School rolls and make a list of those not now being reached by your Church School? Those who cannot attend should be enrolled in the Adult Home Department. Then there are families in our churches which have members belonging to no church, but who should be enrolled in your Church School. Then there are many in your community who prefer the Methodist Church but are not in your Church School. Most of our communities provide enough material for a good prospect list for the Methodist Church or Churches of the community. Why not plan now to increase the Church School enrollment and attendance?

## PASTORS LEAD WAY WITH PLEDGES OF LARGE FUNDS

Chicago — Several reports of groups of pastors making large individual pledges to the Crusade for Christ relief and reconstruction fund have come to the headquarters office.

Eight members of the Roanoke, Va., District, including two superintendents, pledged \$500 each at a recent meeting.

District Superintendent Albert H. Marion of the New Haven, Conn., District, asked the pastors to sign covenant and pledge cards at the altar of the Bristol, Conn., church, recently. Forty-two responded, and signed pledges totaling \$2,153. "Considering that a number of the pastors were students with very small incomes, this was a very significant expression of interest in the Crusade," Dr. Marion wrote. "If churches of the New Haven District were to give in proportion to its ministers, the total offering would be well over \$1,000,000. Our quota is only \$86,000."

In the North Arkansas Conference, pledging for the Crusade for Christ began in the Annual Conference session last November when Bishop Paul E. Martin and the eight district superintendents pledged one month's salary each.

There is a sound social reason for the church and there is an equally sound demand that a church be given the support of every person interested in the moral welfare of the community.

## CRUSADE NEWS PARAGRAPHS

In one day, recently, Epworth Church, Huntsville, Ala., where Rev. Olen Cornelius is pastor, oversubscribed its Crusade for Christ quota by \$245 in ten minutes; placed \$860 on the altar to apply on the church debt of \$1,200; voted to wipe out the balance of the debt on Christmas Sunday, and received into membership on confession of faith a young woman who had pledged \$25 to the Crusade, and who said: "I want to give myself along with my offering."

Before the organization of the new John Wesley Church, across the Ashley River from Charleston, S. C., was officially named, a Quarterly Conference held, or any officers elected, its 107 members laid \$107 on the altar for the Crusade for Christ relief and reconstruction fund. It was the first contribution in the South Carolina Conference.

The highest oversubscription on a Crusade quota in the New York Area was made by the newly-organized Negro congregation of Trinity Church, Morrisania, Bronx, N. Y., where Rev. William James is the pastor. Because the church started only last summer with not a single member transferred to it as a nucleus, District Superintendent John M. Pearson gave it only at token quota of \$64.00. When the acceptance report came back, \$428 was written in as the quota, because the folks were dissatisfied with the lower asking. The \$428 has now been subscribed—670 per cent over the quota.

Tithing of their "whole income" is enabling the members of the Handsboro, Miss., church to pay their Crusade quota of \$1,250, reports Rev. D. R. O'Connor, pastor.

Four churches of the Williamsport, Pa., District, Central Pennsylvania Conference, began their Crusade for Christ effort before the official Conference opening date of December 26—and all oversubscribed! District Superintendent E. C. Meyers reports: Newberry Church, Williamsport, pledged \$4,193, \$1,500 over; Pine Street Church, Williamsport, pledged \$8,300, \$1,900 over; Montoursville, Pa., Church pledged \$3,000, \$500 over; and Woolrich, Pa., Church pledged \$3,929, \$1,407 over.

After \$1,312 had been pledged to the Crusade, on a quota of \$1,039, at a recent morning service, 11 teams went calling on persons who did not attend the Dayton, Iowa, Church that day and secured pledges for \$500 more. Additional pledges brought the total to \$2,163 by December 28, reports Pastor M. E. Dorr.

On the serviceman's mailing list of a Harvey, Ill., Methodist Church is the name of a Naval lieutenant (j. g.) who is a Roman Catholic, but that fact was not known to the pastor until he received a letter which enclosed a check for \$25.00 for the Crusade relief and reconstruction fund. The letter stated: "Your enumerated five great enterprises of the Crusade for Christ state the problems with which Americans are faced, concisely and adequately. The solution and realization of these principles can give us the lasting peace for which we fight. I wish you every success, locally and nationally. Your success will be the success of America."

## FIERY CHARIOTS

*Fiery chariots compass round,  
The servants of the Lord;  
Lo, they stand on sacred ground,  
Supported by his word.*

*When surrounded by the foe,  
God's servants stand and wait,  
His salvation they shall know,  
And enter heaven's gate.*

*Mortal eye hath never seen,  
These legions of the sky,  
Yet how oft they intervene,  
And to our rescue fly.*

*Light eternal then doth break,  
Upon our vision fair;  
Then the shining way we take,  
Forever free from care.*

*God of grace, let us behold,  
Thy mighty arm of power;  
In thy strength we shall be bold,  
Each passing day and hour.*

—G. N. Cannon, Stephens, Ark.

## 2,500 BRITISH METHODIST BUILDINGS DAMAGED BY BOMBS

LONDON (By Wireless) (RNS)—Over 2,500 Methodist buildings in Great Britain have been severely damaged by bombing, it was announced at a meeting of the Methodist War Damage Committee at Birmingham. Recent reports showed that 300 of the denomination's buildings were hit by robot bombs in Southern England alone.

The meeting urged church trustees to request licenses from local authorities for repairs to buildings, even though current shortages of materials may prevent any work being done. This would avoid liability for weather damage when final assessments of war damages are made.

Having attained the financial goal of its "Crusade por Cristo," west Mexican Conference, held at the Southern District of the Southworkers and leaders conference at Rio Grande City, Texas, December 18-24, to plan for a great "Cruzada de Evangelismo" — the evangelistic phase of the Crusade.

As pledges were made to the Crusade for Christ relief and reconstruction fund by the members of the Newberry Church, Williamsport, Pa., candles were lighted as tributes to the 115 young men and women in the armed forces. Two gold candles, in memory of two members who were killed in action, were the last to be illuminated.

Pennies, dimes and quarters in a sugar sack comprised the first Crusade for Christ offering in the Decatur-Oxford, Ga., District. The \$20 gift was made by 50 "youngsters" of the Junior Church at East End Church, Decatur, Ga., led by Rev. Fred E. Still, associate pastor, and his assistant, Mrs. Louis Musser, at the morning service, December 3. Rev. N. O. L. Powell is the pastor.

The church is the only institution which shoulders as a continuing obligation that religious instruction which upholds an ideal of righteousness based upon the highest examples and upon responsibility to God.—Ex.

It is a rare gift to be able to say witty things without a sting.—Ex.



## A WORLD IN AGONY

(Continued from page 2)

Again when we see the whole body of humanity a common infective agent is manifest. Call it pride if you will or selfishness if you please—that one virus is present in every ailing member of the body of humanity.

The pride of nationalism or of racism, what are these but the projection of the individual into national or racial entity? The warfare of economic theory or of industrial friction, is it any other than the clash of self interest? And what does break the homes? Is it not the intrusion of selfishness or of egotism? The individual for whom everything about the home is "my" and nothing is "our," the individual

whose selfish desires must find satisfaction irrespective of the effect on other members of the family—is not such a one—rather the selfishness of such a one—the agent of the tragedy?

Selfishness in the form of pride, ambition, the will to power, slavery, to desire, aspiration for responsibility beyond capacity, these and their kindred are the hidden causative factors in individual breakdown.

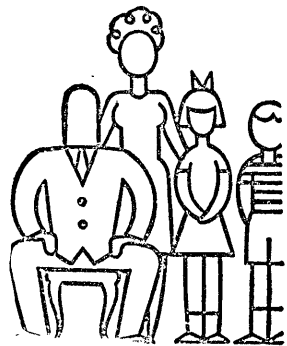
So then this world of ours is sick in all its members—sick with the disease of disintegration or of anarchy arising from that pride, that selfishness, that egotism which recognizes only self as the final authority?

And once again what shall we say of the church? Is the cause of fragmentation any different? There are legitimate variants in

value among our denominations—but surely none great enough to justify exclusiveness, to cause churches to refuse to work together wholeheartedly for the salvation of humanity. And what of the arrogance of human beings who, confronting the infinity which is God's—Jesus—worship—life—dares to say we have "the truth, the whole truth and nothing but the truth—we, and we alone."

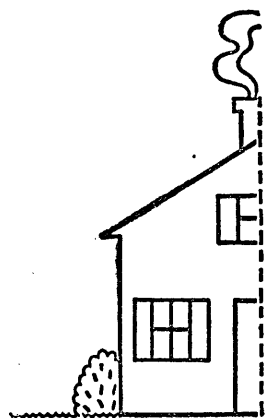
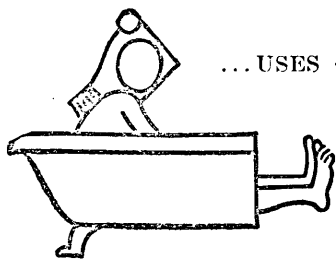
Let me come back again to the beginning. We are not dealing with mere matters of convenience. We are dealing with matters of necessity—of imperative necessity. This world—this humanity in which all of our fortunes are bound together—is mortally sick. We must find the specific and we must courageously apply it.

## IF YOURS IS AN



...INCLUDES 3 1/2 PERSONS

## Average American Family

...OWNS HALF  
OF A HOUSE

...USES 1/3 OF A BATH TUB

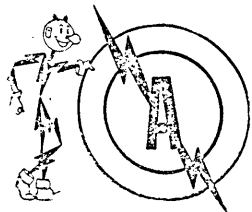
AND — GETS ABOUT TWICE AS MUCH ELECTRICITY FOR ITS  
MONEY AS IT DID 15

YEARS AGO!



That makes it just about the biggest bargain in your wartime budget! For this you can credit the electric companies, manned and managed by practical business people, under public regulation. Their hard work has made electric service dependable and cheap.

*Cheap Electricity  
Powers Postwar Progress!*



ARKANSAS POWER AND LIGHT CO.

HELPING BUILD ARKANSAS

# The Sunday School Lesson

By DR. W. P. WHALEY



## LIVING IN THE KINGDOM OF HEAVEN, THE CHURCH

LESSON FOR JANUARY 28, 1945

SCRIPTURE TEXT: Matthew 6:19-34, and Matthew 7:1-29.

GOLDEN TEXT: "Seek ye first the Kingdom of God, and His righteousness; and all these things shall be added unto you." Matt. 6:33.

In this lesson we are continuing the study of Jesus' Sermon on the Mount, which we studied in part last week. In the first part of His sermon, Jesus was trying to show the Jews the KINGDOM OF HEAVEN is a spiritual kingdom, and not a kingdom of the world; and that the laws of the Kingdom, which had been incorporated in the Jewish Church, were not to be destroyed, but clarified and purified and filled with a spiritual content. Jesus christianized these standards for HIS CHURCH, which is the KINGDOM OF HEAVEN, or the KINGDOM OF GOD.

In today's lesson, Jesus is telling us how to live in THE KINGDOM OF HEAVEN, or THE CHURCH. The local churches in which we hold membership are units of THE CHRISTIAN CHURCH, or THE KINGDOM OF HEAVEN.

### I. The Attainment of the Best (Matt. 6:19-23)

Paul said (Col. 3:1, 2) "If ye then be risen with Christ, seek those things which are above, where Christ sitteth on the right hand of God. Set your affection on things above, not on things on the earth." Conversion means change. A new convert should be directed to these words of Paul. A man has not been really converted if his interests, his efforts, his aims, his goals have not been changed. Being IN the church instead of OUT is not a sufficient change. A church man's chief purpose must not be the amassing material things, the winning earthly place and honor, or feathering an earthly nest. He must have an appreciation for "those things which are above," and "covet earnestly the best gifts."

"Treasures in heaven." We shall need a feathered nest up there. We shall need something to live on in that world. The material things we gather here cannot be carried to that country, nor used there. In this world people who have money are the heirs of the world: they can buy what they want. James says (2:5) the "rich in faith" are "heirs of the kingdom." Faith here includes the Christian virtues of a moral and a spiritual life. Those who "lay up treasures in heaven" will have something to live on when they get there.

### II. Loyalty to the Kingdom, and Confidence in the King (Matt. 6:24-34)

Jesus said for us to put the church "first" in our Christian life. Jesus did that himself. He gave himself for the church. No other organization should come ahead of the church with us. If the church comes first with us, we love it and enjoy it. Christ's Church is the greatest Kingdom on earth: in pop-

ulation, in wealth, in territory, in art, in science, in literature, in ideals, in program for this world, and in assurances for the world to come. It is said men become great by identifying themselves with a great enterprise. Nothing does so much for a man as thoroughly identifying himself with the church.

"All these things shall be added unto you." An intelligent, moral, and spiritual church life is the best equipment for earthly success. The wealth of the world is in the hands of Christian nations, as unchristian as they are. If the Bible chart for earthly success were really followed, the things we strive for and fail to get would be "added" unto us. God, and His laws and powers have so much to do in our affairs.

"If God so clothe the grass of the field." Jesus was pleading that we have confidence in the KING of the Kingdom. "Unbelief is sin." Our anxiety, distrust, worry, and fear amount to "unbelief," and that is a wrong attitude toward God.

Of course we are to eat our bread in the sweat of our face; but, while we are doing our part, let us remember that God is on the job with us. It has been estimated that man, by his sweat and toil, makes five per cent of his living; while God, by his earth and air and sun and rain and other natural influences, makes ninety-five per cent for him. He does not leave the field when the farmer does. He does not sleep when we do.

### III. The Golden Rule (Matt. 7:1-13)

About 550 B. C., the great Chinese philosopher, Confucius, said: "What you would not want done to yourself, do not do to others." About 460 B. C., a Greek philosopher, Socrates, said: "What stirs to anger when done to you by others, that do not to others." About 380 B. C., another Greek philosopher, Aristotle, said: "We should bear ourselves toward others as we would desire that they should bear themselves toward us." About 60 B. C., the great president of the Jewish Sanhedrin, Hillel, said: "Do not to thy neighbor what is hateful to thyself." About A. D. 32, Jesus said: "Whatsoever ye would that men should do unto you, even so do ye also to them." Notice that the old philosophers stated the Golden Rule negatively, but Jesus stated it positively. We must not only refrain from doing evil to others, we must do good to them.

A member of Christ's Church, a citizen of the Kingdom of Heaven, must have a Christian attitude toward his fellowmen. Uncharitable thinking and judging are forbidden. Jabbing at the little faults of others, when we should be tugging at our

own big faults, is unchristian. We must be cautious about displaying our precious spiritual experiences before people who will only sneer and mock; for there are people who have no more appreciation of spiritual things than "dogs" and "swine."

### IV. Careful Driving (Matt. 7-13, 14)

In apostolic times, Christianity was called "THE WAY." Perhaps Isaiah's prophecy of the "highway" (35:8) suggested this name. Christianity is a great "HIGHWAY;" but we must drive carefully on it. The great highways of this world are full of crashes and tragedies. Simply because the road is good, we dare not be careless in our driving. Safety depends as much upon the man at the steering wheel as upon the engineers who built the highway.

### V. We Must Be Careful About the Preachers Who Come (Matt. 7:15-21)

The church in Old Testament times was harrassed and disturbed by "false prophets." Christ said in another place (Mark 13:22) "For false Christs and false prophets shall rise, and shall shew signs and wonders, to seduce, if it were possible, even the elect." Christians are called "sheep;" and sheep are the best bait in the world for wolves. In John 4:1, we are warned: "Beloved, believe not every spirit, but try the spirits whether they are of God: because many false prophets are gone out into the world." A Christian should be so "rooted and grounded in the truth" that he cannot be torn up and swept away by any "wind of doctrine."

### VI. Mere Observance of the Forms and Ritual Not Enough (Matt. 7:21-24)

This paragraph contains the most solemn warning Christ could give us. Read those verses again. In another place (Luke 13:23-30) Jesus said that in the judgement there would be many who had been regular church attendants, had heard the gospel, and had taken the sacrament; and were trusting to that for admission into the eternal habitation of the blessed; but the JUDGE did not know them! We must know Christ, and let Christ know us.

### VII. Building Character and Eternal Life (Matt. 7:24-29)

There is no excuse for a Christian to be flimsy and unstable. All that God has is put at his use, and a man can be a substantial character based on a firm foundation. Eternal life must be built in us while we are in this world. Paul said we "must put on immortality." Through the summer days, the waving corn in the fields is taking from earth, air, rain, and sun precious materials to pack into solid grains endowed with life that can spring into a resurrection in next year's fields. If the corn does not appropriate these god-given materials, it is not fit for grinding or for planting.

"We then, as workers together with Him, beseech you also that ye receive not the grace of God in vain." (2 Cor. 6:1).

I believe in enthusiasm—an enthusiasm that has backbone to it, an enthusiasm that has life in it, an enthusiasm that has weight and power in it, and an enthusiasm that has usefulness in it.—Earl Riney.

## METHODIST ORPHANAGE REPORT

(Continued from page 7)

Widener-Round Pond	48.10
Wynne	80.00
Smith's Chapel	4.15
Total	\$1151.07

### JONESBORO DISTRICT

Black Oak	\$ 10.00
Blytheville, First Church	100.00
Blytheville, Lake Street	50.00
Bono-Trinity	33.00
Dell	30.00
Dyess-Whitten, Whitten Church	9.00
Harrisburg	48.60
Joiner	10.00
Jonesboro Churches:	
First Church	250.00
Huntington Avenue	50.00
Kaiser-Garden Point	30.00
Lake City	34.00
Luxora	4.50
Manila	20.00
Marked Tree	71.00
Monette	12.00
Nettleton-Bay	25.00
Osceola	15.00
Truman	25.00
Turrell	5.00
Tyronza	50.00
Wilson	40.00
Yarbro-Promised Land	34.43
Total	\$956.63

### PARAGOULD DISTRICT

Beech Grove-Camp Ground	\$ 9.00
Gainesville Circuit	16.00
Hardy Charge	15.00
Hoxie	26.13
Imboden	7.50
Knobel Circuit	6.89
Leonard Circuit	20.00
Lorado Circuit	7.50
Marinaduke	15.00
Morning Star	3.00
Paragould, First Church	310.00
Paragould Circuit	53.15
Rector, First Church	30.00
Rector Circuit	14.80
Smithville Circuit	16.68
St. Francis Circuit	13.40
Walnut Ridge Circuit	5.00
Walnut Ridge Church	25.00
Total	\$594.05

### SEARCY DISTRICT

Antioch	\$ 54.70
Augusta	40.00
Bald Knob-Bradford	32.50
Beebe	10.00
Cabot	150.00
Clinton	61.12
DeView	5.00
Griffithville	7.00
Harrison	50.00
Heber Springs Churches:	
First Church	75.00
Central Church	31.00
Hunter	42.80
Judsonia	5.00
Kensett Circuit	30.00
Leslie	20.00
McCrory	25.00
McRae Circuit	29.00
Newton County, Basin Church	3.61
Quitman	3.15
Rosebud Circuit	10.00
Valley Springs Circuit	26.00
Total	\$710.88
Total for North Arkansas Conference	\$ 2853.60
Total for Little Rock Conference	1977.32
Individual Gifts not credited to any church	128.10
Grand Total	\$28,091.52
North Arkansas Conference total last year	\$ 6,138.55
Little Rock Conference	14,032.56
Grand Total last year	\$20,171.11

## DANISH PRIMATE URGES FORMATION OF SCANDINAVIAN CHURCH COUNCIL

STOCKHOLM (By Wireless) (RNS) — Bishop Hans Fuglsang Damgaard, primate of the Danish Lutheran Church, has suggested organization of a Scandinavian Church Council, according to the Danish Press Service.

Members of the Council would be elected by the highest ecclesiastical church authorities in consultation with their bishops. The Council's task would be to work for ecclesiastical unity in the various countries by adopting and developing already proved forms of cooperation.

Presumably, the Council would embrace Denmark, Norway, Sweden, Finland, and Iceland.

Face your difficulties and acknowledge them; but do not let them master you.—Helen Keller.