

*Twentieth Annual  
Session of the*

GENERAL COMMISSION ON ARCHIVES & HIST  
THE UNITED METHODIST CHURCH

*Arkansas Valley  
Conference*

*United  
Brethren in  
Christ.*

1900.

**MINUTES**  
**OF THE**  
**TWENTIETH ANNUAL SESSION**  
**OF THE**  
***Arkansas Valley Conference,***  
**CHURCH OF THE**  
**UNITED BRETHREN IN CHRIST.**

**ASSEMBLED AT**  
*Wichita, Kansas, February 28,--March 3, 1900.*

---

*Published by Order of the Conference.*

---

Attica, Kansas,  
GOSPEL PRESS PRINT.  
C. E. FARNEY.

## Conference Officers and Committes.

---

Chairman,  
BISHOP J. S. MILLS, D. D., Ph. D.  
Denver, Colorado.

---

Recording and Statistical Secretary,  
H. H. ZEIGLER, Haven, Reno. County, Kansas.

---

Presiding Elders.  
F. P. SMITH AND C. E. FARNEY.

---

Missionary Treasurer—S. W. Foulk.  
Missionary Secretary—J. R. Harner,  
Church Erection Secretary and Treasurer—E. A. Powell.  
Preachers' Aid Treasurer—J. R. Harner,  
Sabbath School Secretary and Treasurer—H. S. Riegel.  
Corresponding Member of Historical Society—S. Garrigus.

---

### TRUSTEES OF LANE UNIVERSITY.

G. W. Morgan, term expires 1901.  
J. R. Harner, term expires 1902.  
F. P. Smith, term expires 1903.

---

### STANDING COMMITTEES.

Missions—Chas. E. Farney.  
Church Erection—J. R. Harner.  
Publishing Interests—E. A. Powell.  
Education—Chas. A. Hendershot.  
Sabbath Schools—J. E. Wilson.  
Y. P. C. U., H. H. Zeigler.  
Resolutions—J. G. Rogers.

### READING COMMITTEES.

First Year—E. R. Myers, J. N. Edwards and A. S. Bacon.  
Second Year—W. L. Hinshaw, J. Morrison and G. W. Morgan.  
Third Year—Chas. E. Farney, J. R. Harner and F. P. Smith.

## Conference Officers and Committees.

---

Chairman,  
BISHOP J. S. MILLS, D. D., Ph. D.  
Denver, Colorado.

---

Recording and Statistical Secretary,  
H. H. ZEIGLER, Haven, Reno. County, Kansas.

---

Presiding Elders.  
F. P. SMITH AND C. E. FARNEY.

---

Missionary Treasurer—S. W. Foulk.  
Missionary Secretary—J. R. Harner,  
Church Erection Secretary and Treasurer—E. A. Powell.  
Preachers' Aid Treasurer—J. R. Harner,  
Sabbath School Secretary and Treasurer—H. S. Riegel.  
Corresponding Member of Historical Society—S. Garrigus.

---

### TRUSTEES OF LANE UNIVERSITY.

G. W. Morgan, term expires 1901.

J. R. Harner, term expires 1902.

F. P. Smith, term expires 1903.

---

### STANDING COMMITTEES.

Missions—Chas. E. Farney.  
Church Erection—J. R. Harner.  
Publishing Interests—E. A. Powell.  
Education—Chas. A. Hendershot.  
Sabbath Schools—J. E. Wilson.  
Y. P. C. U., H. H. Zeigler.  
Resolutions—J. G. Rogers.

### READING COMMITTEES.

First Year—E. R. Myers, J. N. Edwards and A. S. Bacon.  
Second Year—W. L. Hinshaw, J. Morrison and G. W. Morgan.  
Third Year—Chas. E. Farney, J. R. Harner and F. P. Smith.

# Conference Roll.

## ACTIVE ITINERANTS, ORDAINED.

Beltz, Geo. M.	Enterprise, Kansas
Blinn, P. H.	Attica, Kansas
Edwards, J. N.	Turon, Kansas
Farney, Chas. E.	Attica, Kansas
Foulk, S. W.	Greensburg, Kansas
Garrigus, S.	Mc Pherson, Kansas
Harner, J. R.	Mulvane, Kansas
Hinshaw W. L.	Sterling, Kansas
Maxey, J. J.	Danville, Kansas
Milligan, P.	Eatonville, Kansas
Morgan, G. W.	Hutchinson, Kansas
Morrison, John	Cimarron, Kansas
Powell, E. A.	Maize, Kansas
Riegel H. S.	Stafford, Kansas
Rogers, J. G.	Corbin, Kansas
Sanders, J. A.	Hackney, Kansas
Smith, F. P.	Mulvane, Kansas

## ACTIVE ITINERANTS, LICENTIATE.

Burrill, A., 3rd year.	Burns, Kansas
Cunningham, T. S., 3rd year.	Pawnee, Oklahoma
Garman, L. G., 3rd year.	Greensburg, Kansas
Harrison, Jas. F., 3rd year.	
Hendershot, Chas. A., 3rd year.	Winfield, Kansas
Hinshaw, H. L. Mrs., 2nd year.	Sterling, Kansas
Horner, L. M. Mrs., 2nd year.	Maize, Kansas
Murphy, Chas. E., 3rd year.	Kingman, Kansas
Porter, W. H., 2nd year.	Fellsburg, Kansas
Tuttle, G. W., 1st. year.	Sedgwick, Kansas
Tuttle, M. E. Mrs., 1st. year.	Sedgwick, Kansas
Williams, D. A., 3rd year.	Lerado, Kansas
Wilson, J. E., 2nd. year.	Wichita, Kansas
Zeigler, H. H., 3rd. year.	Haven, Kansas

## ITINERANTS SUPERNUMERARY.

Bacon, A. S.	Sylvia, Kansas
Burket, J. W.	Lecompton, Kansas
Corley, Joel	Sterling, "
Heisel, Chas. E.	1628 west 1st. street, Dayton, Ohio
Hill, E.	Nickerson, Kansas
Myers, E. R.	Hudson, "
Snyder, W. T.	Lecompton, "

## ITINERANTS SUPERANNUATED.

Gay, George.....	Greenwich, Kansas
Henninger, D. S.....	Sedgwick Kansas
Koons, I. A.....	Wichita, Kansas
Parks, R. W.....	Toronto, Kansas
Shull, Jacob.....	Mulvane, Kansas

## LOCAL.

Blake, John A., 2nd year.....	St. John, Kansas
Leitner, G. W.....	St. John, Kansas
Mordy, S. B., 1st. year.....	Mulvane, Kansas
Myers, O. P., 2nd. year.....	Kingman, Kansas
Rose, W. L., ordained.....	Wichita, Kansas
Shull, U. H.....	Mulvane, Kansas

## LAY DELEGATES—WINFIELD DISTRICT.

Carter, A. M.....	Mulvane Charge
Baker, Henry.....	New Eden Charge
Daniel, J. B.....	Eatonville Charge
Easterly, I. S.....	Danville Charge
Guyer, W. C.....	Hackney Charge
Kettering, C.....	Corbin Charge
King, J. W.....	Fellsburg Charge
Light, J. H.....	Kingman Charge
Short, Mary.....	Attica harge
Smith, Geo.....	Sego Charge
Yeager, J. W.....	Winfield Charge
Sherer, J.....	Greensburg Charge

## LAY DELEGATES—HUTCHINSON DISTRICT.

Bertholf, A. L.....	Sedgwick Charge
Horner, W. F.....	Maize Charge
Johnston, H. R.....	Wichita Charge
Kelly, Nannie.....	Sterling Charge
Morrison, L. Mrs.....	Cimarron Charge
Myers, John.....	Pleasant Grove Charge
Prescott, C. W.....	Leon Charge
Price, Chas. S.....	Turon Charge
Tuttle, Isaiah.....	Burns Charge

## DAILY PROCEEDINGS.

---

The Arkansas Valley Conference convened in its Twentieth annual session in the U. B. Church of Wichita, Kansas, at 9 a. m. February 28th, 1900, Bishop J. S. Mills presiding.

Opening devotional service consisted of singing and the offering of three voluntary prayers.

The Bishop then favored the conference with a highly appreciated Bible reading, of one hour, on the subject, In Christ. These morning Bible readings conducted by the Bishop were continued throughout the session, and they proved a fruitful source of Biblical instruction and religious inspiration to all.

At 10 a. m. the business of the conference was taken up.

The roll of ministers and lay delegates was called.

On motion, the first five rows of seats from the pulpit were made to constitute the bar of the conference.

H. H. Zeigler was re-elected recording and statistical secretary.

The hour for opening the daily sessions was fixed at 8:30 a. m. and 2 p. m., and adjourn on motion.

On motion the name of Mrs. Hattie L. Hinshaw was referred to the Committee on Applicants.

The Bishop announced the following committees:—

On Devotion, F. P. Smith, J. G. Rogers and H. R. Johnston.

On Candidates for the Ministry, P. H. Blinn, S. W. Foulk and J. R. Harner.

On Elders Orders, S. Garrigus, W. L. Hinshaw and J. J. Maxey.

On Boundaries and Finance, F. P. Smith, C. E. Farney, C. A. Hendershot, G. W. Morgan, Chas. Price and Henry Baker.

Special treasurers were announced by the Bishop as follows:—

Conference collection, John Morrison.

Educational Beneficiary, J. N. Edwards.

Biblical Seminary, John Myers.

General S. S. Funds, H. S. Riegel.

College Funds, H. R. Johnston.

On motion it was voted to include the Branch Y. P. C. U. minutes as a part of the printed Conference minutes.

Rev. Bro. Hessel, Pastor of the German M. E. Church, Wichita, was introduced to the conference.

Adjourned on motion. Benediction by the Bishop.

### WEDNESDAY AFTERNOON.

Session opened promptly at 2 o'clock.

Devotional services were conducted by John Morrison.

F. P. Smith, Presiding Elder of the Hutchinson District, read an extended and encouraging report of the year's work on his district. Elder Smith's report and character were favorably passed upon.

Chas. E. Farney, Presiding Elder of the Winfield District, submitted a well arranged and hopeful report of the year's work on his district. Report and character were favorably passed upon.

Pastoral reports were submitted and characters passed as follows:—G. W. Morgan, Hutchinson Mission; E. R. Myers, Hudson Circuit; Garden City Station, no pastor; W. L. Hinshaw, Salem Circuit; H. S. Riegel, Abbyville Circuit; Mrs. H. L. Hinshaw, Sterling Mission; E. A. Powell, Maize Circuit; H. H. Zeigler, Pleasant Grove Circuit; Cimarron Circuit, no pastor; A. Burrill, Burns Circuit; J. F. Harrison, Mc Pherson Mission; L. G. Garman, New Eden and Fellsburg Circuits; J. G. Rogers, Wichita Circuit; C. A. Hendershot, Winfield Station; J. E. Wilson, Eatonville Circuit; J. A. Sanders, Hackney Circuit; P. H. Blinn, Attica Circuit; J. N. Edwards, Kingman Mission.



On motion, it was voted that a Sabbath School Anniversary service be held in the U. B. Church, Sunday afternoon, conducted by H. S. Riegel.

Adjourned on motion. Benediction by S. Garrigus.

### THURSDAY MORNING.

Conference was opened at 8:30 o'clock. After singing "Rock of Ages," voluntary prayers were offered by C. E. Murphy, J. R. Harner, and the Bishop. The Bishop again favored us with a highly instructive and religiously helpful Bible reading of one hour.

Business of the conference was resumed by the secretary calling the roll of ministers and lay delegates. The minutes of yesterday's sessions were read and approved.

On motion Rev. W. R. Funk, D. D., Agent for our Publishing House, at Dayton, Ohio, was admitted to an advisory seat in the conference. Dr. Funk favored the conference with a brief fraternal and instructive address on the publishing interests of the denomination.

Fraternal letters from Chas. E. Heisel, Dayton, Ohio, and Joseph Barricklow, Ingalls, Oklahoma, were read by the secretary.

The Committee on Applicants submitted a report on applicants for membership, and the same was approved.

In the absence of S. B. Mordy, H. S. Riegel was appointed to prepare and submit a report on Sabbath Schools.

Pastoral reports were submitted and characters passed as follows: Sego Circuit, Chas. E. Murphy; Sedgwick Circuit, G. W. and M. E. Tuttle; Corbin Circuit, S. Garrigus; Turon, Station, A. S. Bacon; Mulvane Circuit, J. R. Harner; Danville Circuit, D. A. Williams; Greensburg Circuit, no pastor.

The Committee on Second year of the Course of Reading submitted report, and the same was approved.

On motion it was voted that in as much as the Hutchinson Mission did not receive, according to the action of last conference, the fifty dollars voted from the Sunday's collection, that this fifty dollars be paid out of the treasury from the first money received.

The Committee on Boundary submitted report, and the same was adopted.

The publishing Agent made a certain statement and proposition respecting accounts due the Publishing House from some of the older brethren of the conference. On motion the Bishop appointed John Morrison, S. Garrigus and J. R. Harner a committee to investigate the matter of this indebtedness, in connection with the Publishing Agent's proposition.

Requests from J. Barricklow, E. J. Williams and W. R. Livingston for ministerial transfers, were referred to the Committee on Credentials.

Adjourned on motion. Benediction, F. P. Smith.

#### THURSDAY AFTERNOON.

Devotional exercises were conducted by L. G. Garman.

On motion it was voted that we comply with the photographer's request for a sitting of the conference.

Rev. Julian, of the M. E. Church, was introduced to the conference.

Two committees, one from each of the two districts, met in joint session and submitted to the conference a report favorable to one Conference Institute for the coming year. This report was adopted.

The committee on First Year of the Course of Reading submitted a report and this report was adopted.

John Morrison, Committee on Y. P. C. U., read his report, and after some discussion the report was approved as amended.

It was voted that the next annual session be held in Sterling, Kansas.

J. R. Harner, committee on Publishing Interests, submitted his report. After a practical, instructive and encouraging address from our esteemed Publishing Agent, the report was adopted.

An open conference on general interests of the church, conducted by the Bishop, proved highly instructive and helpful.

Pastoral reports from Geuda Springs and Leon circuits were examined and passed upon.

Adjourned on motion. Benediction, D. A. Williams.

---

### FRIDAY MORNING.

Devotional service consisting of song and three voluntary prayers was followed with a Bible reading of one hour, conducted by the Bishop.

The roll was called, and the minutes of yesterday's sessions were read and approved.

On motion President C. M. Brooke, of Lane University, Le-compton, Kansas, was voted an advisory seat in the conference.

On motion it was voted that the Presiding Elders make provision for the deficit on Bishop's salary.

The roll of unemployed ministers was called and their characters passed upon.

On motion the following resolution was adopted:—"Resolved that we recognize in Rev. J. H. Manning an efficient evangelist and soul winner, and commend him to the confidence of the people everywhere."

Rev. W. M. Bell, General Missionary Secretary, Dayton, Ohio, was voted an advisory seat in the conference.

The committee on Third Year of the Course of Reading submitted its report, and the same was approved.

On motion the conference voted its thanks to Dr. Funk for the appreciated stereoptican entertainment of Thursday night.

John Morrison submitted his report as conference evangelist,

and the same was approved.

The special committee appointed to investigate the indebtedness of some of our ministers to the Publishing House, made report. After some discussions it was proposed that we now raise enough money to cancel the accounts due the Publishing House from Fathers I. A. Koons and D. S. Henninger, two superannuated brethren. C. A. Hendershot led out in this proposed effort with the result that \$40.00 was thus raised, which with the liberal discount made by our Publishing Agent, cancelled the debt. After the names of Fathers Koons and Henninger had been stricken from the report, the report was adopted as read.

On motion it was voted that this special action of the conference favorable to these two superannuated brethren be not regarded as a precedent for the future.

Rev. Dr. Slutz, of the M. E. Church, was introduced to the conference.

Adjourned on motion. Benediction, Dr. W. R. Funk.

#### FRIDAY AFTERNOON.

Devotional service consisting of song, prayer and Scripture reading was conducted by S. W. Foulk.

On motion J. W. Yeager and H. R. Johnston were appointed a committee to audit the Branch Missionary Treasurer's books.

The following collections were reported:

John Morrison, on Bishop's salary,.....	\$113.65
J. N. Edwards, on Beneficiary Education,.....	13.42
John Myers for Union Biblical Seminary,.....	16.00
H. S. Riegel, for S. S. General Fund,.....	16.00
H. R. Johnston, for Lane University,.....	39.50
E. A. Powell, for Church Erection,.....	44.00
J. R. Harner, for Preacher's Aid,.....	58.58

J. N. Edwards, committee on Education, submitted his report. After earnest and practical discussion by C. A. Hendershot, E.

A. Powell, President Brooke, and the Bishop, the report was adopted as read.

On motion Geo. M. Beltz's request for evangelistic relation during the coming year was referred to the stationing committee

On first ballot F. P. Smith and C. E. Farney were re-elected the Presiding Elders.

The following brethren were elected to station the presiding elders: Hutchinson District, W. L. Hinshaw and E. A. Powell. Winfield District, C. A. Hendershot and J. R. Harner.

The lay delegates met in separate session on Thursday, and chose as candidates for election as lay delegates to the next General Conference, Chas. S. Price, W. C. Guyer and A. Herbert.

The following ministerial brethren were chosen as candidates for election as delegates to the next General Conference.—W. L. Hinshaw, F. P. Smith, C. E. Farney, J. R. Harner, S. Garigus and G. W. Morgan.

On motion the name of Leon circuit was changed to Beaumont circuit.

An open conference on general church work, conducted by the Bishop, was of practical helpfulness.

On motion Dr. Bell was asked to lecture in the church tonight on Porto Rico and our mission there.

Adjourned on motion. Benediction, J. R. Harner.

---

## SATURDAY MORNING.

Devotional services of song and three voluntary prayers was followed with the Bible reading of one hour by the Bishop.

The roll was called and the minutes of yesterday's sessions were read and approved.

On motion Rev. W. M. Weekley, General Church Election Secretary, Dayton, Ohio, was voted an advisory seat in the conference. Rev. Weekley favored the conference with a hopeful

address on church erection interests.

Rev. Burns of the M. E. church, was introduced to the conference.

C. A. Hendershot, committee on Missions, read his report and after very practical and highly instructive remarks from Dr. Bell, the report was adopted.

Mrs. C. A. Hendershot read to the conference a report of yesterday's annual session of the Branch Woman's Missionary Association, and it was voted to incorporate this report in our printed conference minutes.

Rev. Parker of the M. E. church, was introduced to the conference.

On motion F. P. Smith was re-elected trustee of Lane University.

E. A. Powell was elected Branch Church Erection Secretary and Treasurer.

J. R. Harner was re-elected Preachers' Aid Treasurer.

On motion J. R. Harner, S. Garrigus and C. E. Farney were appointed a committee to distribute the preachers' aid fund.

H. S. Riegel was elected Sabbath School Secretary and Treasurer.

On motion W. E. Seaman, of Udall, Kansas, and E. Shull and Ed. Swanson, of Mulvane, Kansas, were constituted the tellers to count the ballots cast for delegates to the next General Conference.

On motion the conference secretary was constituted the committee on publication of the conference minutes.

A collection was taken for the secretary amounting to \$11.21.  
Adjourned on motion. Benediction, Rev. Parker.

---

### SATURDAY AFTERNOON.

Devotional service conducted by G. W. Morgan.

J. A. Sanders, Branch Missionary Treasurer, submitted his re-

report, with the approval of the Auditing Committee, and the report was adopted.

S. W. Foulk was elected Branch Missionary Treasurer.

J. R. Harner was elected Branch Missionary Secretary.

On motion F. P. Smith, C. E. Farney, E. A. Powell, H. R. Johnston and J. W. Yeager were constituted the Conference Church Erection Board.

The Bishop advised that the Conference Board of Church Erection loan its funds for a definite period of time to needy churches, and thus keep this money sacred for this use.

Chas. E. Heisel, committee on Church Erection, submitted his report through the secretary, and after instructive remarks and helpful suggestions from Rev. Weekley, the report was approved.

The committee on Credentials made a report; and same was adopted.

H. S. Riegel, committee on Sabbath Schools, submitted his report, and same was adopted.

The committee on Finance submitted a report, and same was approved.

On motion it was voted that we raise our Home Missionary assessment and pay it over to the Branch Missionary Treasurer by October 1st. 1900.

The committee on distribution of preachers' aid fund submitted its report, and same was adopted.

E. A. Powell, committee on Resolutions, submitted his report, and same was adopted item by item.

The Bishop announced the standing committees for the coming year.

---

### EVENING SERVICES.

TUESDAY NIGHT. Song and prayer service conducted by H. S. Riegel. Preaching by J. R. Harner. Text, Luke 9:48.

WEDNESDAY NIGHT. Devotional service conducted by J. N. Edwards. Sermon by J. E. Wilson. Text, John 14:6.

THURSDAY NIGHT. Devotional service of song and prayer conducted by C. E. Farney. Dr. Funk then favored the audience with more than one hundred magic lantern views of our Publishing House, the city of Dayton, Ohio, leading men and women of the denomination, and places of historical interest.

FRIDAY NIGHT. Opening song service conducted by Dr. Bell. Dr. Bell then gave the audience a spirited lecture on Porto Rico, and our mission there. Several pledges to the Branch Y. P. C. U. Mission Fund, of certain amounts to be paid yearly for a period of five years, were taken, amounting to forty dollars annually.

SATURDAY NIGHT. Song and prayer service conducted by E. A. Powell. Sermon by Pres. C. M. Brooke. Text, John 6:28.

---

### SUNDAY SERVICES.

U. B. CHURCH. At 10 a. m. a prayer and praise service was begun, conducted by John Morrison, and lasting one hour

Bishop Mills then read a scripture lesson, from Isaiah 53:1-12 and Luke 24:13-27, after which he offered prayer. The Bishop preached from Luke 24:26 a sermon that inspired greater love to God, and a longing desire to realize the exalted ideal that is for us in Christ. His subject was, The Suffering, Triumphant, Ideal God-man. Notwithstanding the unfavorable weather, the house was crowded with attentive hearers. Elder Farney asked the congregation for twelve dollars to make up the deficit in Bishop's salary, and the congregation responded with an offering of \$15.89. After filling the Bishop's claim the balance of \$3.89 was given to the secretary. After offering a few appropriate remarks, the Bishop read the stationing committee's report.

The Sabbath School anniversary was observed with a suitable



service at 3 p. m., conducted by H. S. Riegel.

Prayer and praise service, Sunday night, was conducted by Geo. M. Beltz. Rev. Weekley read the 84th, Psalm as a Scripture lesson, and offered prayer. He then preached an excellent and helpful discourse from Ps. 122:1.

Dr. Bell, Pres. Brooke, J. A. Sanders, S. Garrigus, J. N. Edwards and A. Burrill filled pulpits in different parts of the city.

During the session fraternal communications were read from G. W. Leitner, St. John, Kansas, and Wm. Strobe, Toronto, Ks.

J. R. Harner, E. A. Powell, C. A. Hendershot and J. E. Wilson were appointed by the presiding elders a committee to arrange for a conference Institute.

## CONFERENCE REPORTS.

### PRESIDING ELDER'S REPORTS.

#### HUTCHINSON DISTRICT.

*To the Bishop and Members of the Arkansas Valley Conference, Greeting:—*  
With thanksgiving to God for the unmerited favors and mercies of another year, I submit to you my report. The District is composed of fifteen fields of labor, of which I wish to speak separately.

Hutchinson Mission. G. W. Morgan, pastor. Bro. Morgan has been faithful, giving both his time and means to make the work a success. The debt has been removed, the church strengthened, and we now have a better footing and brighter outlook in this city than ever before.

Abbyville Circuit. H. S. Riegel, pastor. Bro. Riegel has proven himself a careful toiler. General interests looked after. Revivals with revival spirit and progress.

Burns Circuit. A. Burrill, pastor. The pastor has done a good work. The parsonage and both church houses have been repainted and a \$75. bell procured for the Burns church. All improvements paid for. Bro. Burrill merits the substantial co-operation he has received from his people.

Sterling Mission Station. A good year's work accomplished by Mrs. H. E. Hinshaw, pastor in charge. The church debt has been removed and the church house repainted. All interests cared for, and assessments all full. So far as my knowledge reaches, this is the only church house in the conference lighted by electricity.

Leon Circuit. W. H. Porter, pastor. This field covers a large portion of rather rough country, but is blessed with a generous hearted people, with whom the pastor has done a good work. G. M. Beltz rendered valuable assistance in protracted meetings.

Cimarron Circuit. This field was assigned to John Morrison, who resigned it immediately after adjournment of conference. For various reasons this field was not supplied. Bro. Morrison lives within the bounds of this charge, and has looked after its general interests. The membership is widely scattered with no church property.

Hudson Circuit. E. R. Myers pastor. This is a large and difficult field to travel. The pastor has toiled faithfully, and received only a meager support. A splendid church house was built this year and dedicated Dec 31, 1899. This house stands a monument to careful church financing, and an honor to God and his people.

Turon Station. This charge was assigned to J. W. Burket, who resigned it Sept 5th., to enter Lane University. A. S. Bacon was appointed to the charge, and completed the year to the satisfaction of all concerned. The church debt has been considerably reduced, and the house repapered and painted.

Wichita Circuit. J. G. Rogers pastor. Bro. Rogers has closed his fifth year of progressive work on this field. Early in the year the brethren wisely provided themselves with a parsonage, second to none in the conference, and conveniently located. Satisfactory progress has been made. Of the quarterly conference members on this charge, ten are preachers.

Maize Circuit. E. A. Powell in charge. A good year for both pastor and people. Meetings held with a good revival interest manifest. The parsonage has been improved, and two lots added to the real estate. Assessments all full.

Pleasant Grove Circuit. This field was assigned to Chas. E. Heisel, who served one half the year, and resigned to enter Union Biblical Seminary. H. H. Zeigler was appointed to the charge, and completed the year with good results. Bro. Zeigler is careful and systematic in all his work.

Salem Circuit. W. L. Hinshaw pastor. The pastor has been much afflicted, yet a good year's work has been done. A pulpit recess was added to Salem church, the church papered and repainted, at a cost of some \$150.00, which money was provided by the Ladies' Aid Society.

Garden City Station. No pastor. During the year I visited this charge and found a comfortable parsonage clear of debt and in good repair, and a church house in rather bad repair with a debt of \$187.50. There is practically no organization, and the future outlook is not promising.

Mc Pherson Mission. This charge was assigned to E. J. Williams, who served five weeks and then resigned. J. F. Harrison was appointed to this field, and has done a faithful work. All church interests have been carefully considered, but the crowning effort of the year was the providing of funds for the cancelation of the old church debt. The outlook on this field is hopeful.

Sedgwick Circuit. G. W. and M. E. Tuttle in charge. The pastors have been untiring in their zeal and labor. Bro. and Sister Tuttle had to confront a parsonage debt of \$210.00, all of which has been paid. Old Otterbein church, in which this conference was organized, has been repainted, and now presents a new appearance. The future outlook is more hopeful than for years past.

I have not given the number of conversions and accessions, but on every field in charge of a regular pastor, revivals have been held and an earnest effort put forth. The circulation of our church literature, and especially of the Religious Telescope and Watchword, is much better than a year ago. Of course this means a more churchly people. On every field we have one or more Sabbath schools, all of which, I think, are using United Brethren literature. New life and inspiration has taken possession of our young people's societies, and the work is assuming heretofore unexpected possibilities. With higher aspirations and broader views they are pressing forward, and with no uncertain sound are responding to the Macedonian cry for substantial missionary aid. The interests of Lane University have not been overlooked, and several of our young people are now in that institution preparing for future usefulness. Pastoral salaries, as a rule, have been paid in full as agreed upon. But in nearly every instance the salary received has been too meager to answer as a sufficient means of support. I am sure the time is at hand when we must have a better supported ministry. One young man of more than ordinary promise was licensed to preach. Pastors' reports will show chart assessments full on nearly every field of labor. I have endeavored to carry on, as best I could, the work of the district. My brethren have kindly assisted me, which help has been highly appreciated. I wish to thank both the ministry and the laity for the kindness shown me.

Quarterlies held 56; sermons preached 197; miles traveled 7598; salary assessed \$528.00; received \$490.70; Paid for hired help, traveling expenses etc., \$134.52.

Respectfully submitted,

F. P. SMITH, P. E.

WINFIELD DISTRICT.

*DEAR BISHOP AND BRETHREN:-*

It is with a thankful heart that I am permitted to make this annual report. The blessing of our kind Heavenly Father has been upon myself and family in health and com-

forts, both material and spiritual.

When I was elected a year ago I had nine weeks of school yet to teach, the Board was kind enough to let me off with five weeks. Because of this I was delayed in the beginning of the year, and found it necessary to double up some of the quarterlies. Notwithstanding this the ministry and laity have received me kindly and co-operated heroically for the upbuilding of the master's kingdom.

The district as assigned to me consisted of fifteen fields of labor, but these were early reduced to thirteen. The Sheridan work was in a community already occupied by a sister church, with an organization and church house. There was no room for another church and the pastor wisely resigned, and the work was discontinued. Early in the year Wellington charge was resigned. There being only twenty-four members divided between two organizations, and an appropriation of only fifty dollars, and no place to hold services in the city, I did not think it wise to prolong its dying agonies, but just let it die. There is one appointment on this charge that should be re-attached to Corbin circuit, for the coming year. To the remaining thirteen works I have given my time and effort throughout the year.

**RESIGNATIONS** Before leaving the conference J. Barricklow resigned Fellsburg circuit. L. G. Garman was then given the charge and traveled it in connection with New Eden circuit. Simon B. Mordy resigned Wellington. P. Milligan resigned Sheridan. Failing to agree with his people on salary, T. R. Sprague resigned Geuda Springs circuit immediately after conference. W. R. Livingston was appointed and served the charge until about Nov. 1st., when he resigned. P. Milligan has served the charge from that date and will report it. H. H. Zeigler resigned Corbin and Simon B. Mordy was appointed. On account of failing health Brother Mordy had to give up the work at the first quarterly meeting. S. Garrigus was then appointed and will report the work. T. S. Cunningham resigned Greensburg circuit at the second quarterly meeting, and being unable to suitably supply it, the charge has been without a pastor the last half of the year. Notwithstanding this the work is in good condition.

**ORGANIZED MEMBERSHIP** There are thirty-nine organizations with a membership of 1408. The revival season was greatly interrupted with bad roads and sickness, yet a good revival spirit obtained over the entire district. Conversions and reclamations 240; accessions 249; increase 88. The Sunday-schools, as a rule, are well organized and equipped with our literature, and second to none, most all running twelve months in

the year. We have some splendid young people's societies on the district, well managed and making good progress, but there is still room for many more organizations. I am impressed that the greatest need of the Church on the entire district, is a better comprehension and reception of the Holy Spirit, as an equipment for divine service.

FINANCIAL INTERESTS. I think that the ministerial support promised was above that of a year ago, and I have done what I could to get a full settlement on each charge. Many of the churches have paid in full to my knowledge but the charge to which they belong may be behind. Some of the pastors will report salary in full, while others will fall short. The chart assessments have been looked after, and I think will be well represented in the main, considering the lack of system on nearly every charge with nearly every member touching this important part of work. I would favor a per capita assessment of each chart interest, each member paying as a means of divine grace and not as a drudge, or using catch penny devices to save his own purse. Some indebtedness has been canceled. The Attica debt has been reduced from \$750 to \$500; the \$130 indebtedness on the Corbin parsonage was collected by Sister Garigus, and paid. One church house has been provided, and improvements made on several charges. Let all who are in debt pay a part each year, and it will soon be paid. We have eighteen church houses and seven parsonages, with twenty-one homeless churches and six homeless pastors.

PERSONAL. Quarterlies held 50. Missing rail-way connection, I failed to reach Eatonville the first meeting. Bro. J. Barricklow was present and was elected chairman. He conducted the services very satisfactory. The first quarterly on the Geuda Springs work was not held because the pastor had not reached the field. Sermons preached 175; Baptisms 14; miles traveled 6000; salary assessed, exclusive of the two works dropped, \$476; salary received \$480; traveling expenses and house rent \$130

Respectfully submitted,

CHAS. E. FARNEY, P. E

---

## Reports on Course of Reading.

---

### COMMITTEE ON FIRST YEAR.

We, your committee, would report as follows: The following members of the class appeared before us, and were examined per Discipline,

making the following grades: Mrs. H. L. Hinshaw—Fleming 100; Sell 99; Weaver 99; Etter 100; Kephart 100; Pierson 100; Berger 100. We recommend that she pass to the second year.

Mrs. M. E. Tuttle—Kephart 74; Etter 85; Weaver 83; Life of Otterbein instead of U. B. Church History, 98. We recommend that she pass upon the above named books. J. E. Wilson—Weaver, 96; Sell, 70. He having passed on all the other books heretofore, we recommend that he pass to the second year. G. W. Tuttle—Etter, 85; Weaver, 84; Kephart, 83; Life of Otterbein, 85. We recommend he be excused from further examination on the above books. S. B. Mordy and W. R. Livingston failed to appear. We recommend they be retained another year in the first year.

A. S. Bacon.

J. N. Edwards.

#### COMMITTEE ON SECOND YEAR.

We, your committee, report as follows: The following persons appeared before us, and were examined, receiving the grades as attached:—J. F. Harrison passed on Fisher, Hill, and Exegetical Studies, receiving an average grade of 79. Mrs. L. M. Horner passed on Fisher, Etter, Sell, and Berger, making an average grade of 84. D. A. Williams passed on all the books, making an average grade of 75. J. E. Wilson passed on Fisher, Etter, and Sell, making an average grade of 85. T. S. Cunningham passed on Fisher, Etter, Hill, Miley, and Exegetical Studies, making an average grade of 76. We recommend that Bros. Williams, Harrison and Cunningham pass to the third year, they having completed the books in second year. We recommend that Sister Horner and Bro. Wilson pass on the books read.

W. L. Hinshaw.

J. Morrison.

G. W. Morgan.

#### COMMITTEE ON THIRD YEAR.

We, your committee, submit the following report: Bros. Zeigler, Murphy, Hendershot, Burrill and Cunningham appeared before us, and made the following grades: H. H. Zeigler—Miley, 95; Shedd, 95; Exodus, 90; Hebrews, 90; Hilprect, 98; Butler, 100; Ethics, 98. C. E. Murphy—Fisher, 87; Miley, 85; Shedd, 74; Exodus, 99; Hebrews, 90; Hilprect, 90; Butler, 93. C. A. Hendershot—Fisher, 80; Miley, 84; Psychology, 80; Butler, 74; Ethics, 80. A. Burrill—Fisher, 41; Miley, 70; Psychology, 62; Shedd, 84; Exodus, 78; Hebrews, 55; Hilprect, 54; Butler, 15;

Ethics, 38. T. S. Cunningham—Shedd 78. We recommend that Bro. Zeigler pass on Milty, Shedd, Exodus, Hebrews, Hilprect, Butler and Ethics, but be retained in Fisher and Psychology. That Bro. Murphy pass on Fisher, Miley, Shedd, Exodus, Hebrews, Hilprect and Butler, but be retained in Psychology and Ethics. That Bro. Hendershot pass on Fisher, Psychology, Miley, Butler and Ethics, but be retained in Shedd, Exodus, Hebrews and Hilprect. That Bro. Burrill pass on Miley, Shedd, and Exodus, but be retained in Fisher, Psychology, Hebrews, Hilprect and Butler. That S. Cunningham pass on Shedd, but be retained in the remaining books of the year. L. G. Garman asked to be excused from examination this year, and we so recommend.

F. P. Smith.

J. R. Harner.

C. E. Farney.

## Reports on Ministerial Relations.

### COMMITTEE ON APPLICANTS.

We, your committee, report as follows: Mrs. H. E. Hinshaw appeared before us, and we found her clear on Bible doctrine, and in possession of a rich personal experience. We recommend that she be received into the conference. We would report on transfers as follows: We recommend that J. Barricklow, E. J. Williams and W. R. Livingston, each be granted a transfer as per their request, but that Bro. Livingston's transfer be retained by the secretary until settlement of an old account is made with C. E. Farney.

P. H. Blinn.

J. R. HARNER,

S. W. Foulk.

### COMMITTEE ON ACCOUNTS.

Your committee to whom was referred the names of those in arrears with the Publishing House reports as follows: The names of J. J. Maxey, P. Milligan, W. T. Snyder and O. P. Myers were referred to us, and we find their accounts have not been well looked after. We recommend that the conference declare these accounts must be paid during this conference year.

J. Morrison.

J. R. Harner.

S. Garrigus.



## Business Reports.

### COMMITTEE ON BOUNDARY.

The committee on boundary met Wednesday morning after adjournment of the forenoon session, and organized with F. P. Smith as chairman, and C. S. Price as secretary. After adjournment of conference in the afternoon the committee met at 423 south Washington Ave., and proceeded as follows: Considering the great task before, and realizing the great need of the guidance of God, prayers were offered in this behalf by Bros. Morgan, Hendershot and Farney, after which a verse of "Nearer my God to Thee" was sung. The committee then proceeded with the following results: Fields remaining unchanged, Hutchinson, Hudson, Wichita, Maize, Pleasant Grove, Sedgwick, Burns, Leon, Winfield, McPherson, Eatonville, Mulvane, Danville, Attica, Kingman, Sego, Fellsburg and Greensburg. Changes were made as follows: Garden City and Cimarron to be united and called Garden City Mission. Detach Liberty Chapel from Salem circuit and attach to Sterling, to be called Sterling Mission. Detach Fairview and Glendale from Abbyville Circuit, and attach to Turon to constitute Turon circuit. Detach Salem from Salem charge, and attach to Abbyville circuit. Geuda Springs and Hackney to be united and called Hackney circuit. Detach Concord from Wellington Mission, and attach to Corbin circuit Wellington Mission to be discontinued. We recommend that the conference be divided into two districts, to be known as the Hutchinson and Winfield districts. The Hutchinson District to consist of the following fields of labor: Hutchinson Mission, Hudson Circuit, Garden City Mission, Abbyville Circuit, Sterling Mission, Wichita Circuit, Maize Circuit, Turon Circuit, Pleasant Grove Circuit, Sedgwick Circuit, Burns Circuit, Leon Circuit, McPherson Mission. Winfield District to consist of the following: Winfield Station, Eatonville Circuit, Hackney Circuit, Mulvane Circuit, Corbin Circuit, Danville Circuit, Attica Circuit, Kingman Mission, Sego Circuit, New Eden Mission, Fellsburg Mission and Greensburg Circuit.

F. P. Smith.

C. E. Farney.

C. A. Hendershot.

G. W. Morgan.

C. S. Price.

## FINANCE COMMITTEE.

FIELD OF LABOR	<i>Presiding Elder.</i>	<i>Missions.</i>	<i>Home Missions.</i>	<i>S. S. General.</i>	<i>U. B. Seminary</i>	<i>Preachers' Aid.</i>	<i>Bishop's Salary.</i>	<i>Ben. Education.</i>	<i>Lane University.</i>	<i>Church Erection.</i>	<i>Appropriation.</i>
<b>HUTCHINSON DISTRICT.</b>											
Hutchinson.....	\$30	\$ 9	\$23	\$1	\$1	\$2	\$4	\$1	\$ 9	\$1	\$200
Hudson.....	50	10	25	1	1	2	5	1	10	3	
Gardeu City.....	30	6	15	1	1	2	3	1	6	4	100
Abbyville.....	44	10	25	1	1	4	5	1	10	3	
Sterling.....	40	10	25	1	1	3	5	1	11	4	50
Wichita.....	60	13	30	1	1	6	7	1	14	4	
Maize.....	50	15	40	1	1	5	8	1	19	4	
Turon.....	50	13	30	1	1	4	7	1	15	3	
Pleasant Grove.....	50	15	40	1	1	6	8	1	19	4	
Sedgwick.....	40	8	20	1	1	5	4	1	8	2	
Burns.....	40	8	20	1	1	2	4	1	7	2	
Beaumont.....	40	10	25	1	1	3	6	1	13	3	
Mc Pherson.....	36	9	23	1	1	2	4	1	10	4	100
<b>WINFIELD DISTRICT.</b>											
Winfield.....	60	15	40	1	1	6	8	1	20	5	
Eatonville.....	40	13	30	1	1	3	5	1	13	2	
Hackney.....	60	15	40	1	1	6	8	1	15	5	
Mulvane.....	50	13	30	1	1	5	6	1	13	4	
Corbin.....	40	10	25	1	1	3	4	1	9	3	
Danville.....	40	10	25	1	1	3	6	1	13	3	
Attica.....	50	13	30	1	1	4	5	1	12	4	
Kingman.....	40	10	25	1	1	2	4	1	9	3	100
Sego.....	40	13	30	1	1	3	6	1	14	3	
New Eden.....	30	8	20	1	1	2	3	1	6	2	75
Fellsburg.....	40	8	20	1	1	2	4	1	8	2	75
Greensburg.....	40	8	20	1	1	2	7	1	17	3	

## CHURCH ERECTION TREASURER'S REPORT.

Received on assessments, \$44.00 Paid to W. M. Weekley for the Parent Board, \$22.00. Balance in the treasury, \$22.00.

E. A. POWELL, Treasurer.

## MISSIONARY TREASURER'S REPORT.

Received on general missions.....	\$302.01
Received on Mission debt.....	517.57
Total receipts.....	\$819.58
Paid on orders.....	\$534.79
Paid to Parent Board $\frac{1}{2}$ collection for missions general	151.00
Total paid out.....	\$685.79

Balance in the treasury \$133.79 J. A. SANDERS, Branch Treas.

## BOARD OF PREACHERS' AID.

We submit the following report: We recommend an equal division of \$58.00 between Bros. Geo. Gay, R. W. Parks, I. A. Koons and D. S. Henninger and Sister Hahn.

J. R. Harner.

S. Garrigus.

C. E. Farney.

## Standing Committees' Reports.

## EDUCATION.

Every thing that renders man more successful in his efforts to help fellow man, merits our sympathy and support. One of the effective agencies in accomplishing this end is Christian education. The rich blessings now enjoyed by the people of this country, and the great service we are rendering the less fortunate children of men in other lands, is stimulated and made possible largely through the blessings of God upon Christian education. We are thankful to God for Lane University and for the prominent part she bears in the educational work of the state.

Hence, be it Resolved: 1st., That we note with pleasure the reduction of the debt on Lane University, and the raising of more than \$22,000 in notes, cash and real estate during the past year. 2nd., That we approve the action of the General Board of Education of our church in recommending that each institution of learning raise a twentieth century fund, and that we pledge our best efforts and co-operation in securing a twentieth century fund for Lane University. 3rd., That the pastors of this conference raise and remit the Lane assessment for the ensuing year, not later than May 10th., 1900. to Prof. E. S. Andis, Le-compton, Kansas. And that the finance committee be authorized to ap-

portion \$300, as the amount of the Lane assessment for this conference the coming year. 4th, That we, as preachers and interested members in the laity, will send the names and post office addresses of prospective students to the President of Lane University, Leocompton, Kansas. 5th. That we regard the Divinity School at Lane University as a splendid opportunity for preachers old and young. Bishop Mills will conduct this school, assisted by Prof. J. P. Landis, of Union Biblical Seminary, May 15-25, 1900. Special teachers are provided for all the studies in the Course of Reading, and we urge all licentiates to attend this school, and pass examinations here, as grades received here will be accepted in all conferences of the church. 6th, That we urge all our young ministers to attend Union Biblical Seminary, that they may be better fitted for the work of the Master.

Respectfully,

J. N. EDWARDS.

### SABBATH SCHOOLS.

No department is of greater importance than the Sabbath schools; therefore, the efforts that are put fourth for the advancement and improvement of the rising generation is indeed a very encouraging feature of Christian work, yet we believe there is room for improvement. The Sabbath School should be a place of rest to man, but service to God. Is it not true that too many of our schools lack freshness and life, not for the want of worldly wisdom, but of the wisdom that comes from above, which is first pure, then peaceable, easily entreated and full of good work. If we would succeed in years to come, we must plant the church of Christ into the hearts of the children. Christ said to Peter, feed my lambs. Therefore be it resolved that we redouble our diligence in bringing the little ones to the truth and use every legitimate means to encourage the youth of our land to attend the Sabbath school; that we, as co-workers will pray for the baptism of special preparation of heart and spirit for the work. Resolved that we recommend our Sabbath Schools be well supplied with our literature, which is second to none, and the very best for us and our children. Sensible of the necessity of better teaching in our Sunday Schools, we recommend the formation of normal classes wherever practicable and that Sabbath School institutes or conventions be held in each Presiding Elder's district.

Respectfully,

H. S. REIGEL.

Y. P. C. U.

The latent power that slumbered so long is waking up at last. But

this power is only partially awake as yet. When fully aroused, and its noble abilities utilized, it will move the church and world for God. It used to be said that young people should listen and be still, but we now say, listen and act. Put all your mind, heart and soul into that channel which makes men and women more wise and good. "The open door," and "The white man's burden," are familiar expressions of the present day. God has opened to us many doors of opportunity in the last two years, and he wants these fields cultivated and sown with Gospel seed. Millions of people for whom Christ died are sitting in the shadows of moral and intellectual death. What can, should, will we do? When God commanded Moses to build the tabernacle, Moses asked the people to give with willing hearts unto the Lord. The money poured in untill the preacher said, stop, withhold, we have more than enough. How shall all these people hear the Gospel tidings without preachers? And how shall preachers go to these people, except they be sent? Who will send them? If the Young People's Christian Union are given a fair chance, they will respond. Therefore, be it Resolved: 1st, That we heartily endorse the worthy purpose of our Conference Branch, to raise \$250.00 by the date of its next annual convention, toward the support of Rev. and Mrs. N. H. Huffman, our Kansas Missionaries in Porto Rico. 2nd, That pastors organize when and wherever practicable the Y. P. C. U., and thus utilize our young people for Christ and the church. 3rd, That we now and here extend a hearty and pressing invitation to all who can to attend the Branch Convention in Winfield, Kansas, in May, 1900.

Respectfully,  
JOHN MORRISON.

#### MISSIONS.

This is preeminently the age of missions. No church can advance to-day unless deeply interested in missions. The missionary spirit is that which has prompted all great reforms. It was a missionary spirit that caused Christ to leave the loyal hosts of heaven and dwell among rebels. It was this same spirit that filled Paul when the king cried out, "Paul thou art beside thyself" It was a missionary spirit that actuated Luther when he exclaimed "I will go to the Diet of Worms if there are as many devils there as there are tiles on the houses." It was the missionary spirit that moved Wycliffe in the reformation. It was this same spirit that caused Otterbein to cross the stormy sea for America, to plant the seed which was destined to develop into one of the mighty branches of God's vineyard. And if we follow the advance of our church, we

see that the years of our most brilliant success were when our church was most powerfully stirred with missionary zeal and activity. The success which has attended our efforts in home missions only opens wider fields of usefulness, and teaches us what CAN be done. And what CAN be done, should be done. Our success in foreign fields assures us of God's presence, and of his willingness to lead us forward to victory. And tho we deplore the sad fate of our missionaries in Africa, yet we are told in God's word that all things work together for good to those that love God. Then it can be the pessimist only, who will not look forward to time to reveal to us the fact that, by our having suffered this loss, greater good has come to God's kingdom than could have come in any other way. Then, as our missionaries are going so fearlessly to the work, let us who stay by the camp and watch the stuff try to cultivate a larger missionary spirit among our people. Since Neosho conference sends two of her bright workers to Africa, let us be more interested in Africa. And inasmuch as Kansas conference has furnished two missionaries for Porto Rico we ought to be intensely interested in that country. Porto Rico is one of our best mission fields; one that will yield us greater results than almost any other field. We believe that all our foreign fields should be made self supporting, as far as is possible, by the sending of mechanics and machinery to these fields, and the teaching of different arts to the natives. We believe that if our mission board would spend more money in this way, greater success would attend our efforts. Our people in this conference are not giving largely enough to missions. I note from last year's minutes that we paid only 21.1 cent per member for missions. This means for all missionary purposes. Only 12.9 cents per member was paid for chart missions, on y one half of which goes out of the conference, to the parent board. Winfield charge paid last year 51.4 cents per member for missions, while another charge that paid its pastor four hundred dollars, paid only 12.5 cents per member for missions. There must be a wrong division somewhere, when a charge raises eight hundred and fifty dollars and pays only twenty dollars for missions; while another charge raises seven hundred and ten dollars and pays seventy-two dollars for missions. I think we ought to raise one dollar per member for missions. If we did this I believe our conference would gain one thousand members in one year. God will bless a missionary church, and one that is dead to this all important subject, need not look for a great outpouring of God's Spirit. Therefore be it resolved: 1st. That as pastors, we preach more upon missions, and thus educate our people to greater giving for this cause. 2nd, That on our charges we try to raise \$1.00 per member for missions. 3rd, That

as a conference we support the mission in Porto Rico.

Respectfully, C. A. HENDERSHOT.

#### CHURCH ERECTION.

To the brethren of Arkansas Valley conference in session assembled, we your committee on Church Erection interests beg leave to report as follows: It is a gratifying fact that we have come to a point in the history of the United Brethren church when Church Erection is considered indispensable. None who are awake to present day needs in the church are heard to question the necessity of, or doubt the already successful work the Church Erection Society has accomplished. The question before the church and her ministry at present is not, what is the need? but, what is and shall be our attitude toward this important interest? Shall it be intelligent, zealous activity, or passive indifference. Our esteemed General Secretary recently said, in substance, the strength of the church in its several branches of co-operative work is measured by the strength and permanency of its INDIVIDUAL LOCAL churches. It is equally true that the strength and permanency of the local church is largely dependent upon a suitable and convenient house of worship. The church house is the only security for stability and growth. What has Church Erection done for us as a denomination? The BEST answer to this question is the living testimony of hundreds of now thrifty congregations who attribute their life and efficiency to the helpful agency of Church Erection. In its financial interests the results of the last few years have been very gratifying. The Society has now a fund of nearly \$60,000. The appeal for the Bishop Weaver fund of \$5,000 has been answered to the amount of \$4,100. More churches are being helped, and more opportunities for good investments are being taken advantage of than ever before. What Church Erection would like to do can be best answered by the list of needy applicants for aid, who must be turned away for want of money in the treasury. Church Erection has a heart; and its pulsations ought and must be quickened by the co-operation of its constituents, if it be able to flow out blessing to the church. Much has been done and many hearts rejoice because of it. Much more can be accomplished by united effort. As an earnest of our purpose to co-operate yet more largely in this work we recommend: 1st, That we commend the untiring zeal of our Rev. Bro. Weekly. And that we show our appreciation of his efforts, both by personal contact and through the weekly column of the Telescope, by a hearty co-operation. 2nd, That we make our church erection assessment as high as those of other

interests, of equal importance; and then make an earnest, concientious effort to collect the full amount. 3rd, That we will endeavor to arouse interest, and encourage personal bequests in behalf of Church Election.

Respectfully,

CHAS. E. HEISEL.

#### PUBLISHING INTERESTS.

In this age of widely disseminated information, when the common people and all the people are reading more widely than ever before, and an effort is made to supply a literature that is cheap, great responsibility is on the Agent of the Publishing House—on the pastors in the conference—they should redouble their diligence to supply the homes of our people with wholesome literature.

Therefore, be it Resolved: 1st, That we express our appreciation of the work of the Publishing House, and our approval of the present management. 2nd, Believing the Telescope to be growing ever better, we will do our part to increase its circulation on every field in the conference. 3rd, We will bring the Watchword to the attention of our young people, and encourage them to read it, so as to get a broader view of the young people's work, and be encouraged thereby. 4th, That we will circulate the Search Light and Woman's Evangel among our people, and thus bring them into touch with the missionary work of the church. 5th, That we will bring to the notice of our people the Quarterly Review, which periodical occupies a field in literature that should be supplied, and we will give the Review the attention which its importance demands. 6th, We will seek to supply all our Sunday Schools, that are not so supplied, with our own literature. 7th, We most cordially recommend to our people in Kansas and Oklahoma the Gospel Press, published by C. E. Farney, Attica, Kansas, and we will make a strenuous effort to increase its circulation. Respectfully, J. R. HARNER.

#### RESOLUTIONS.

Resolved, That we return thanks to God for the preservation of the lives of all the members of this conference through another year.

Whereas, to succeed in the ministry to-day requires all the energy, brain and heart there is in a man or woman, therefore be it Resolved, that we study, pray and visit more, and preach better.

Whereas, we believe there are no fields in this conference but that will do the right thing by their pastor, therefore Resolved, that we forever set our seal of disapproval to pastors resigning their charges without reasons that will justify them in the eyes of God and man.

Resolved, That we regard total abstinence not only as a habit of life



whereby a man protects himself, but also as a means by which he may aid in protecting others; and amid the trying conditions of the present day we believe total abstinence to be patriotic, as well as a Christian duty. We advocate the use of unfermented wine in the observance of the Lord's supper; and we call upon our Christian brothers everywhere to use their power as citizens to keep the legalized saloon out of Kansas, and toward making it an outlaw in the nation.

Be it Resolved, That we sincerely pray President Mc Kinley to exercise his prerogative in banishing the liquor canteen from our army. And that we ask him to allow the Roman Catholic church no rights of property, nor exercise of power in the Phillipine Islands, which would be out of harmony with the ecclesiastical policy of the Government in the states, and which would render establishment of Protestant Christianity in those islands exceedingly difficult, if not impossible.

Whereas, The members of this conference session have been so royally entertained and provided for by the pastor and people of Wichita; therefore, be it Resolved, that by a rising vote we express our sincere appreciation of their hospitality.

Be it Resolved, That we express our sincere thanks to Bishop Mills for the able manner in which he has presided over this conference, and for the very instructive Bible lessons given during this session.

Submitted,

E. A. POWELL.

#### CONFERENCE INSTITUTE.

The joint committee in session assembled recommends a Conference Institute, and that the presiding elders elect be authorized to appoint a committee, composed of two members from each district, to arrange program, time and place of meeting.

G. W. Morgan.

J. F. Harrison.

C. E. Farney.

J. E. Wilson.

E. A. Powell.

#### EVANGELIST'S REPORT.

I have preached during the year 95 regular and 10 funeral discourses. Received several persons into the church. Congregations good. Presents received to the value of \$35.00. Had some pressing invitations to hold meetings, but my health at the time would not permit. All is peace and harmony.

JOHN MORRISON.

## Stationing Committee's Report.

### WINFIELD DISTRICT, CHAS. E. FARNEY P. E.

Attica.....	P. H. Blinn
Corbin.....	J. G. Rogers
Danville.....	J. J. Maxey
Eatonville.....	P. Milligan
Fellsburg.....	W. H. Porter
Greensburg.....	S. W. Foulk
Hackney.....	J. A. Sanders
Kingman.....	Chas. E. Murphy
Mulvane.....	J. R. Harner
New Eden.....	to be supplied
Sego.....	D. A. Williams
Winfield.....	C. A. Hendershot

### HUTCHINSON DISTRICT, F. P. SMITH, P. E.

Abbyville.....	A. M. Scoville
Burns.....	A. Burrill
Beaumont.....	J. F. Harrison
Garden City.....	to be supplied
Hudson.....	H. S. Riegel
Hutchinson.....	G. W. Morgan
Maize.....	E. A. Powell
Pleasant Grove.....	H. H. Zeigler
Sedgwick.....	G. W. and M. E. Tuttle
Sterling.....	W. L. and H. E. Hinshaw
Mc Pherson.....	S. Garrigus
Turon.....	J. N. Edwards
Wichita.....	J. E. Wilson

J. W. Burket, Evangelist.

G. M. Beltz, Evangelist at large.

J. Morrison, Soldiers' Home, at Dodge City.

## Minutes of the Branch W. M. A.

The Woman's Missionary Association of the Arkansas Valley Conference Branch met in annual session at the home of Mrs. Morris, Wichita, Kansas, March 2, 1900.

Devotional exercises were conducted by the President, Mrs. J. R. Harner, who made some very interesting remarks.

Reports were read as follows:

Amount collected from dues.....	\$15 00
From Mulvane local society .....	8 73
From Mrs. Ewbanks of Cimarron.....	5 00
Total.....	\$28 73

Number Woman's Evangels, fifteen.

A new society has lately been organized at Danville, by Mrs. Williams. Branch was re-organized with twenty-six regular members, and three honorary members.

Officers for the ensuing year were elected as follows:

President, Mrs. L. M. Harner, Mulvane, Kansas.

Vice President, Mrs. Garrigus, Mc Pherson, Kansas.

Secretary, Mrs. C. A. Hendershot, Winfield, Kansas.

Treasurer, Mrs. P. H. Blinn, Attica, Kansas.

Solicitors for the Evangel, Sisters—Morrison, Burrill and Edwards.

Mrs. C. A. HENDERSHOT,  
Secretary.

## Arkansas Valley Branch Y. P. C. U.

The Seventh Annual Convention of the Arkansas Valley Branch Y. P. C. U. convened in Turon, Kansas, May 11-14, 1899.

The convention was an enthusiastic one, and the attendance was good. The following were some of the topics discussed: "The Relation and Duty of the Pastor to the Local Union," Rev. C. A. Hendershot. "Necessity of Secret Prayer and Religious Meditation to the developement of Christian Character," Miss Polly Collins. "The Value to Young People of Right Thinking and Right Living," Rev. C. E. Heisel. "The Need of Uncompromising Christian Sentiment," Rev. Hattie Hinshaw. "Qualities we like to see in our Local President," J. M. Burket. "Why are Christians under Greater Obligations to Tithe their Incomes than were the Jews," Rev. C. A. Hendershot. "The Methods and Need of Young People Helping their Pastor," O. W. Price. "What can and should the Y. P. C. U. do to Aid Lane University," Pres. C. M. Brooke. "What may we expect from Jesus as our Constant Companion," Bishop Mills.

The convention was honored with the presence of Bishop J. S. Mills, D. D., who lectured Saturday morning and evening, and delivered sermon Sunday morning. President C. M. Brooke also addressed the convention Saturday morning and Sunday evening. During the convention excellent sermons were preached by Revs. J. R. Harner and C. A. Hendershot.

The number of societies reported was 19, with a total membership of 718, of which 544 are active members and 174 associate members. Number of Watchwords taken 114. Number of Junior societies reported was 6, with a total membership of 359.

The convention voted to sustain a misionary in some foreign field. Pledges to the amount of some \$125, were secured, \$21.50

of which was to pay the remainder due on the Los Angeles pledge. A committee composed of Revs. H. H. Zeigler, J. W. Burket and C. E. Heisel was elected to formulate a plan or system for carrying out this proposed mission work.

Reorganization of the Branch resulted as follows:—Pres. Rev. H. H. Zeigler, Haven, Reno, Co., Kans. Vice Presidents the Presiding Elders. Corresponding Secretary, Rev. C. E. Heisel, Haven, Kansas. Recording Secretary, Miss Grace Alexander, Winfield, Kansas. Treasurer, Chas. S. Price, Turon, Reno, Co., Kansas.

Rev. H. H. Zeigler was elected the delegate to the next Biennial Convention, to convene in Lebanon, Pa., June 21-24, 1900, and Rev. C. E. Heisel was chosen the alternate.

GRACE ALEXANDER, Rec. Sec.

The mission committee adopted the following plan: That we endeavor, as a Conference Branch, to contribute the sum of \$250 to missions, the same to go toward the support of Rev. and Mrs. N. H. Huffman, our beloved and faithful Kansas missionaries at Ponce, Porto Rico. Persons contributing \$1.00 or more to this Mission Fund will receive a fine photo of Rev. and Mrs. Huffman. Local Unions and societies contributing as much as \$10.00 to this Fund will receive a beautiful and suitable memento, the exact character of which is not yet decided upon. And persons contributing as much as \$5.00 or more will receive a finely illustrated and very instructive pamphlet on Porto Rico. Such contributions to be received on or before the date of our Winfield convention. All contributions will be acknowledged by postal card and through the Gospel Press. We do not ask you, dear reader, to neglect or deny other church interests, but that you do for this Branch Mission Enterprise that which the Holy Spirit and the goodness of your heart may lead you to do.

We humbly request that all locals still owing their pledge of \$1.00 or \$2.00 to the Los Angeles Fund, will make remittance of same to the Branch Treasurer before the date of the Winfield convention. Also, that all local unions and societies connected with our church in the bounds of this conference, and which have not remitted their annual due of \$1.00 since the Turon convention, will please do this by the date of the next convention, and thus greatly aid the Branch in its work.

By reference to the Conference Minutes of last year and the report of our Recording Secretary, I note that only about one half the number of

locals in the conference made report to the Turon convention. Not having in our possession the names and post office addresses of the several local presidents, we will send blank reports to the different pastors, with the request that every local senior and junior union or society on all the charges be faithfully reported to the Winfield convention. A program for the Winfield convention will be printed and distributed over the conference by about April 1st. Pastor Hendershot and his good people are preparing to do a faithful part toward making the coming convention the best in the history of the Branch. We are hoping that every local in the conference will send one or more delegates to this convention. And all, both young and aged, are cordially invited to attend the convention, and enjoy the spiritual and intellectual feast of good things.

Prof. J. P. Landis, D. D., of union Biblical Seminary, Dayton, Ohio, and president of the general Y. P. C. U., has consented to be with us in our convention this year,

The next annual convention will meet in the U. B. church in Winfield, Kansas, May 10-13, 1900.

H. H. ZEIGLER, Branch President.

## STATISTICAL CHART.

FIELD OF LABOR.	NAME OF PREACHER	Chu'hs		Members.						
		Appointments.	Organizations.	At beginning of Year.	Received.	Deaths.	All Other Losses.	Members at End of Year.	Increase.	Decrease.
Attica .....	P. H. Blinn .....	3	3	89	22	..	7	104	15	...
Corbin .....	S. Garrigus .....	3	3	78	10	..	11	77	...	1
Danville .....	D. A. Williams .....	4	4	89	40	1	4	123	34	...
Eatonville .....	J. E. Wilson .....	4	4	129	3	1	14	117	...	12
Fellsburg .....	L. G. Garman .....	4	4	72	16	2	15	71	...	1
Greensburg .....	T. S. Cunningham .....	3	3	146	3	1	...	148	2	...
Geuda Springs .....	P. Milligan .....	2	2	45	..	1	10	34	...	11
Hackney .....	J. A. Sanders .....	2	2	132	12	1	29	114	...	18
Kingman .....	J. N. Edwards .....	3	3	96	15	2	17	77	...	19
Mulvane .....	J. R. Harner .....	4	4	101	42	..	22	121	20	...
New Eden .....	L. G. Garman .....	3	3	53	4	..	3	54	1	...
Sego .....	C. E. Murphy .....	4	4	126	15	..	14	127	1	...
Winfield .....	C. A. Hendershot .....	1	1	140	83	2	15	206	66	...
Abbyville .....	H. S. Riegel .....	4	4	143	3	2	21	123	...	20
Burns .....	A. Burrill .....	2	2	76	..	2	10	64	...	12
Cimarron .....	.....	1	1	45	..	..	..	25	...	20
Garden City .....	.....	1	1	40	..	..	..	30	...	10
Hutchinson .....	G. W. Morgan .....	1	1	89	18	2	16	89	...	...
Hudson .....	E. R. Myers .....	4	4	113	12	1	29	95	...	30
Leon .....	W. H. Porter .....	4	4	150	10	3	25	122	...	18
Maize .....	E. A. Powell .....	4	4	178	31	..	15	194	16	...
McPherson .....	J. F. Harrison .....	2	2	105	2	1	19	87	...	18
Pleasant Grove .....	H. H. Zeigler .....	4	4	135	31	..	13	153	18	...
Salem .....	W. L. Hinshaw .....	2	2	94	8	..	3	99	5	...
Sterling .....	Mrs H. Hinshaw .....	1	1	39	5	..	2	42	3	...
Sedgwick .....	G. W. and M. E. Tuttle .....	2	2	82	11	1	17	75	...	7
Turon .....	A. S. Bacon .....	1	1	83	..	..	38	45	...	38
Wichita .....	J. G. Rogers .....	2	2	144	12	3	26	127	...	17
Total .....		74	75	2814	408	26	395	2758	181	237

## STATISTICAL CHART.

	Y. P. C. U.				Sabbath-Schools.				Literature.				
FIELD OF LABOR.	No. of Young People's Societies.	No. of Members.	Junior Societies.	No. of Members.	No. of Sabbath Schools	No. Scholars Enrolled.	No. Teachers and Officers.	No. of Libraries.	No. of Volumes.	Religious Telescope	Quarterly Reviews.	Watchwords.	Our Bible Teachers
Attica .....	2	...	...	...	2½	175	30	1	100	8	...	3	5
Corbin .....	...	...	...	...	2	91	20	1	100	13	...	5	...
Danville .....	...	...	...	...	3	180	21	...	...	10	...	...	6
Eatonville .....	1	...	...	...	4	205	30	...	...	12	...	...	4
Fellsburg .....	...	...	...	...	3	110	20	...	...	6	...	...	6
Greensburg .....	1	20	...	...	3	130	20	...	...	6	...	...	6
Geuda Springs .....	1	10	...	...	2	75	12	...	...	16	...	...	...
Hackney .....	2	101	...	...	2	160	25	...	...	18	...	17	12
Kingman .....	1	20	1	17	3	120	30	...	...	10	1	5	5
Mulvane .....	2	40	...	...	3	180	29	...	...	8	1	16	6
New Eden .....	...	...	...	...	3	100	25	...	...	1	...	...	4
Sego .....	2	62	...	...	4	200	33	1	25	10	...	2	...
Winfield .....	1	73	1	45	1	280	21	...	...	26	1	30	...
Abbyville .....	2	62	...	...	3½	195	32	...	...	12	...	22	6
Burns .....	...	...	1	15	2	130	20	...	...	7	1	...	1
Cimarron .....	...	...	...	...	...	...	...	...	...	4	...	2	...
Garden City .....	...	...	...	...	...	...	...	...	...	2	...	...	...
Hutchinson .....	1	56	1	30	1	62	16	...	...	3	...	20	...
Hudson .....	...	...	...	...	3	130	24	...	...	6	...	20	7
Leon .....	1	30	...	...	4	120	25	...	...	6	...	6	...
Maize .....	1	62	...	...	3½	214	33	...	...	16	...	1	6
McPherson .....	2	30	...	...	2	60	17	1	30	2	1	1	...
Pleasant Grove .....	2	50	2	52	3	155	38	...	...	16	...	21	...
Salem .....	1	...	...	...	2	120	22	...	...	12	...	2	10
Sterling .....	...	...	1	25	1	35	9	1	36	2	...	2	5
Sedgwick .....	...	...	...	...	2	75	20	...	...	9	...	...	...
Turon .....	1	68	1	35	1	100	15	...	...	5	...	25	4
Wichita .....	1	22	...	...	2	115	21	1	...	15	...	2	...
Total .....	25	706	8	219	65½	3517	608	6	291	261	5	196	87



## STATISTICAL CHART.

Literature.										Finance.				
<i>Lesson Quarterlies.</i>	<i>Children's F. tends.</i>	<i>Children's Visitors.</i>	<i>Lessons for Little Ones.</i>	<i>Woman's Evangel.</i>	<i>Search Lights.</i>	<i>Pastor's Salary.</i>	<i>Presiding Elder's Salary.</i>	<i>Collected for Chh., Parsonage and Local Current Expenses.</i>	<i>New Churches.</i>	<i>New Parsonages.</i>	<i>Collected for Local Sabbath-School Purposes.</i>			
100	...	30	...	...	...	\$490 00	\$40 00	\$183 85	\$	...	40 00			
80	10	22	2	...	...	220 00	30 00	308 49	...	...	30 04			
40	25	10	...	...	...	218 04	38 00	25 00	450 00	...	30 00			
175	...	45	...	...	...	440 13	40 00	65 00	...	...	34 16			
110	...	20	...	...	...	185 75	30 00	...	...	...	...			
40	30	20	...	...	...	179 61	40 00	45 00	...	...	23 00			
...	30	16	...	...	...	107 10	22 40	65 00	...	...	20 00			
125	...	35	1	...	...	391 17	40 00	75 20	...	...	50 00			
77	10	35	1	...	...	364 90	30 00	100 66	...	...	30 00			
175	60	50	15	2	...	493 18	40 00	150 00	...	...	35 00			
100	...	25	...	...	...	139 00	36 00	6 00	...	...	31 00			
150	25	50	1	...	...	272 36	40 00	60 65	...	...	40 96			
270	70	30	1	1	...	610 80	40 00	507 40	...	...	75 69			
160	30	50	...	1	...	309 55	40 00	151 13	...	...	45 80			
100	30	35	...	1	...	385 05	36 00	171 35	...	...	43 76			
...	...	...	2	2	...	...	...	...	...	...	...			
...	...	...	...	...	...	...	...	...	...	...	...			
60	20	20	...	...	...	195 00	36 00	246 73	...	...	47 00			
85	30	25	2	...	...	286 00	40 00	9 00	967 65	...	60 00			
...	...	10	10	...	...	215 30	40 00	...	...	...	6 00			
175	30	65	...	...	...	469 75	40 00	97 01	...	...	46 50			
30	15	15	2	...	...	229 62	36 00	286 00	...	...	20 00			
160	30	50	1	1	...	496 87	40 00	102 42	...	...	53 97			
100	15	40	...	...	...	380 70	40 00	128 00	...	...	24 00			
40	20	20	...	...	...	238 00	24 00	284 85	...	...	14 75			
50	...	15	1	...	...	275 58	36 00	95 00	...	...	14 25			
120	...	35	1	1	...	208 25	32 00	59 53	...	...	38 00			
115	30	50	2	...	...	577 72	50 00	163 00	...	\$100 00	37 50			
2637	510	490	808	42	19	8379 49	956 40	3386 18	1417 65	100 00	904 38			

## STATISTICAL CHART.

NAME OF CHARGE.	Finance.							Church Erection Assessment.
	General Collection for Missions.	Thank-Offering for Missions	Special for Mis- sions.	Woman's Mission- ary Association.	Sabbath Schools for Missions.	Y. P. C. U. for Missions.	Total for missions.	
Attica .....	\$15 00	\$.....	\$.....	\$.....	\$.....	\$.....	\$15 00	\$ 1 50
Corbin .....	20 00	.....	7 00	.....	.....	.....	47 00	2 00
Danville .....	.....	.....	.....	.....	.....	.....	8 20	.....
Eatonville .....	20 00	15 21	.....	.....	.....	.....	55 21	2 00
Fellsburg .....	.....	.....	.....	.....	.....	.....	3 91	1 00
Greensburg .....	.....	.....	.....	.....	.....	.....	8 00	.....
Geuda Springs .....	.....	.....	.....	.....	.....	.....	.....	.....
Hackney .....	10 00	.....	32 50	.....	.....	.....	42 50	2 00
Kingman .....	15 00	.....	5 00	.....	.....	6 51	41 51	2 00
Mulvane .....	10 00	.....	10 00	8 63	.....	.....	38 73	3 00
New Eden .....	.....	.....	.....	.....	.....	.....	3 70	1 00
Sego .....	5 00	5 80	.....	.....	3 00	10 00	33 80	1 50
Winfield .....	50 00	8 30	36 00	2 00	.....	7 00	107 30	4 00
Abbyville .....	26 55	.....	.....	.....	.....	.....	51 55	3 00
Burns .....	14 46	3 00	20 00	.....	14 44	.....	51 90	2 00
Cimarron .....	.....	.....	3 00	5 00	.....	.....	8 00	.....
Garden City .....	.....	.....	.....	.....	.....	.....	.....	.....
Hutchinson .....	15 00	3 50	.....	.....	.....	.....	20 00	1 00
Hudson .....	15 00	.....	.....	.....	.....	.....	35 00	2 00
Leon .....	10 00	6 35	.....	.....	.....	.....	36 35	1 00
Maize .....	20 00	.....	.....	1 00	.....	.....	46 00	4 00
McPherson .....	15 00	.....	.....	.....	.....	.....	21 82	.....
Pleasant Grove .....	25 00	.....	.....	.....	.....	39 46	89 46	3 00
Salem .....	20 00	.....	.....	.....	.....	.....	40 00	3 00
Sterling .....	10 00	.....	.....	.....	.....	.....	20 00	1 00
Sedgwick .....	3 00	.....	.....	.....	.....	.....	18 00	1 00
Turon .....	4 00	.....	.....	.....	.....	18 00	37 00	1 00
Wichita .....	25 00	.....	.....	.....	26 81	.....	76 81	2 00
To tal .....	333 01	42 16	113 50	16 73	44 25	80 97	952 75	44 00

## STATISTICAL CHART.

## Finance.

<i>Church Erection, Special.</i>	<i>Sabbath-School General Fund.</i>	<i>Children's Day Collection.</i>	<i>Bishop's Salary.</i>	<i>Preacher's Aid.</i>	<i>Beneficiary Education.</i>	<i>Contributions to College, Academies and Seminary.</i>	<i>U. B. Seminary.</i>	<i>Lane University Assessment.</i>	<i>For Mission Debt.</i>
\$.....	\$.....	\$.....	\$ 6 00	\$ 1 00	\$.....	\$.....	\$.....	\$ 1 50	\$15 00
.....	1 00	.....	4 00	3 01	1 00	3 00	.....	3 00	20 00
.....	.....	.....	4 00	.....	.....	.....	.....	.....	8 20
.....	1 00	2 00	4 00	3 00	1 00	.....	1 00	2 00	20 00
.....	.....	.....	3 00	.....	.....	.....	.....	.....	3 91
.....	1 00	.....	4 00	.....	.....	.....	.....	.....	8 00
.....	.....	.....	.....	.....	.....	.....	.....	.....	.....
.....	.....	3 50	5 00	.....	1 00	.....	1 00	3 00	.....
.....	1 00	2 00	3 00	1 00	1 00	.....	1 00	2 00	15 00
.....	.....	6 90	5 00	5 00	.....	.....	.....	3 00	10 00
.....	1 00	.....	4 00	1 00	.....	.....	1 00	.....	3 70
2 00	1 00	30	4 00	2 00	42	.....	1 00	1 00	10 00
10 00	1 00	.....	6 00	5 00	1 00	43 00	1 00	3 00	.....
.....	1 00	.....	6 00	5 00	1 00	.....	1 00	3 00	25 00
.....	1 00	4 48	4 00	2 00	1 00	.....	1 00	2 00	.....
.....	.....	.....	3 00	.....	.....	.....	.....	.....	.....
.....	.....	1 50	3 00	1 00	.....	.....	1 00	1 00	1 50
.....	1 00	1 81	4 00	2 00	1 00	.....	1 00	1 00	20 00
.....	1 00	.....	4 00	3 00	.....	.....	1 00	1 00	20 00
.....	1 00	.....	6 00	5 00	1 00	.....	1 00	3 00	25 00
.....	.....	.....	2 00	1 00	.....	.....	.....	.....	6 82
25 00	1 00	.....	6 00	5 00	1 00	.....	1 00	3 00	25 00
45 00	1 00	2 00	6 00	5 00	1 00	.....	1 00	3 00	20 00
.....	1 00	.....	2 00	1 00	1 00	.....	1 00	1 00	10 00
.....	.....	2 40	3 00	1 00	.....	.....	.....	1 00	15 00
4 50	.....	.....	2 00	1 58	.....	.....	.....	.....	15 00
.....	1 00	.....	6 00	5 00	1 00	.....	1 00	2 00	25 00
86 50	16 00	26 89	109 50	58 58	13 42	46 00	16 00	39 50	322 13

## STATISTICAL CHART.

NAME OF CHARGE.	Finance.			Property and Miscellaneous						
	Evangelistic Aid.	Total for all Purposes.	No. Churches.	New Churches	Value of Church Houses and Grounds.	Debt on Churches.	No. of Parsonages.	Value of Parsonages.	Debt on parsonages.	Months Employed
Attica .....	\$	778 85	2	..	\$1750	\$500	1	\$500	\$	12
Corbin .....		649 47	2	..	2000		1	300		9
Danville .....		773 74	1	..	450		1			12
Eatonville .....		650 50	1	1	450		1	500		12
Fellsburg .....		223 66	..	..						12
Greensburg .....		308 61	1	..	500					6
Geuda Springs .....		214 50	2	..	1535					12
Hackney .....		617 37	2	..	3000		1	700		12
Kingman .....		580 07	1	..	1000	155				12
Mulvane .....		724 41	3	..	3500	700	1	600		12
New Eden .....		223 70	..	..						12
Sego .....		460 99	2	..	1150					12
Winfield .....	8 00	1410 69	1	..	4200		1	830		12
Abbyville .....		618 03	3	..	3000					12
Burns .....		705 54	2	..	2300		1	425		12
Cimarron .....		11 00	..	..						12
Garden City .....			1	..	800		1	500		12
Hutchinson .....		553 23	1	..	850					12
Hudson .....		1411 46	2	1	1660					12
Leon .....		301 65	..	..						12
Maize .....		720 26	2	..	1800		2	500		12
McPherson .....		596 44	1	..	800		1	350		12
Pleasant Grove .....	20 00	847 72	1	..	1200		1	500		12
Salem .....		679 70	2	..	1800					12
Sterling .....		589 60	1	..	1700					12
Sedgwick .....		451 23	2	..	1700		1	350		12
Turon .....		382 86	1	..	1075					10
Wichita .....		1023 03	2	..	3000		1	500	400	12
Total ....	28 00	16454 71	39	2	41460	1355	15	6555	400	253

# THE MARTIN NURSERIES,

Adjoining Winfield on the South,

Offers to the SPRING TRADE a full line of NURSERY STOCK of their own raising, viz:

Apple, Peach, Pear, Cherry,  
Apricot and Plum trees;

Grape Vines, Straw-berries, Rasp-berries,  
Black-berries, Gooseberries and Rhubarb.

A fine stock of hardy out door grown ROSES, with flowering Shrubs and etc. Also a fine stock of EVERGREENS, viz: Austrian and Scotch Pine, Northern Cedar, Arboritea, Silbrian compacta and Pyramidalis; Irish Juniper, also the Savin Sabins, the finest dwarf evergreen for hedging home ground and cemetery lots. Nothing will add so much permanent and increasing beauty for these purposes.

We have also several thousands soft Maples, from six to fourteen feet. Send your order, or call and examine stock and prices.

SEND FOR DESCRIPTIVE CATALOGUE AND FRUIT MANUAL FREE.

Direct to the MARTIN NURSERIES,

Lock Box 54, WINFIELD, KANSAS.

---

## W. G. EAST

Successor to East Brothers.

## GENERAL MERCHANDISE,

HAVEN, - - -

KANSAS.

---

*John E. Merritt.*

*Geo. D. Merritt.*

## HAVEN LUMBER COMPANY,

.....DEALERS IN ALL KINDS OF.....

Lumber, Brick, Lime, Stone, Cement, Plaster,  
Furniture and Builder's Hardware.

Come and see us, and we will not be undersold.

HAVEN, - - -

KANSAS.

W. O. VAN ARSDALE, J. W. SHIVE, J. T. SHIVE,  
Vice President. President. Cashier.

## BURRTON STATE BANK,

—BURRTON, KANSAS.—

Paid Up Capital \$10,000.00.

General Banking and Real Estate Business Transacted.

---

OTHERS MAY MAKE YOU LOW PRICES ON

*Lumber and Building Material,*

But if you will examine our stock, which  
is always kept under cover, you will easily  
see that ours is the cheapest place to buy.

THE EDWARDS & WESTMACOTT LUMBER CO., P. WESTMACOTT,  
Burrtton and Bentley, Kansas. Mgr.

---

*The Palace Drug Store,*

W. H. WILSON, DRUGGIST,

—HEADQUARTERS FOR—

School Books, Stationery, Drugs,  
Patent Medicines, Paint,

Oil, Glass and Etc, Etc.

We appreciate your valued patronage, and solicit a continuance  
of the same.

BURRTON, KANSAS.

---

C. W. STROH,

DRUGS.

PRESCRIPTIONS A SPECIALITY.

BURRTON,

KANSAS.

---

## HOTEL BROWN.

A. T. BROWN, MGR.

Newly Furnished. Central Location.

—Rates \$2.00 per Day—

BURRTON,

KANSAS.

---


**Sells Building Material**  
**At Right Prices**  
***The Belle Plaine Lumber Yard,***  
BELLE PLAINE KANSAS.

---

**Crist & Andrews,**

—Dealers In—

*Moline, Eagle, Sattley, Buford*  
*and George makes of*     =     =     =     ***Implements.***

 We also carry Buggies, Harness. Pumps, and Windmills.

**BELLE PLAINE, KANSAS.**

---

**Stillwell & Carpenter,**

*Real Estate and Immigration Agents.*

*Buy and Sell Real Estate.*

**WELLINGTON, KANSAS.**

---

**A. HUFBAUER,**

BUYER AND SHIPPER OF

**LIVESTOCK.**

Pays Highest Market Prices at all times. See him.

**MILVANE, KANSAS.**

---

# A. G. SHOLBERG MERCANTILE CO.,

*Dealers in Dry Goods, Boots and Shoes, Hats and Caps.*

We always carry a full line of Rugs, Carpets, Staple and Fancy Groceries.  
When in the city call and get our prices.

*McPherson, Kansas.*

---

Scofield & Co.,

**=Drugs=**

McPherson, Ks.

---

I. A. Zug & Co.,

**"The Busy Corner,"**

*Dry Goods, Shoes, Groceries, Hardware, Tinware*      *McPherson, Ks.*

---

*McPherson Marble and Granite Works.*

*J. C. Moon, Proprietor.*

Importer and Dealer In Foreign and Domestic Marbles and Granites.  
McPherson, Kansas.

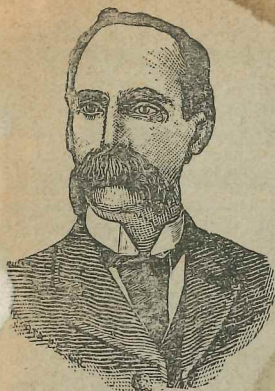
---

**Journey Lumber Company,**

**LUMBER LIME AND COAL.**

Wire Fence and Roofing Paper, Oak and Cypress bridge Lumber.  
Yards one block north of court house.      McPherson, Kansas.





*Do you want a Piano, Organ,  
Sewing Machine or Bicycle?*

My store is headquarters for anything in this line.

I have the largest stock in the west.



**Cash or Easy Payments.**  
Call or write

**THOMAS SHAW, Wichita, Kas.**

CHAPMAN & WALKER, Agents.

## **The First Sign of Spring**

Quickens the pulse and arouses the spirit of all creation.  
It makes lively times here too. Signs of spring are plentiful  
in this store; they multiply in every yard of our New Spring  
Fabrics—New Dress Goods, Wash Goods and Dress Trimmings  
Wraps, Ladies Suits, Underwear

*39 North Main Street.*

*WICHITA, KS.*

## **Lon Williams, Jeweler,**

331 E. Douglas. Opposite the Manhattan.

WICHITA, KANSAS.

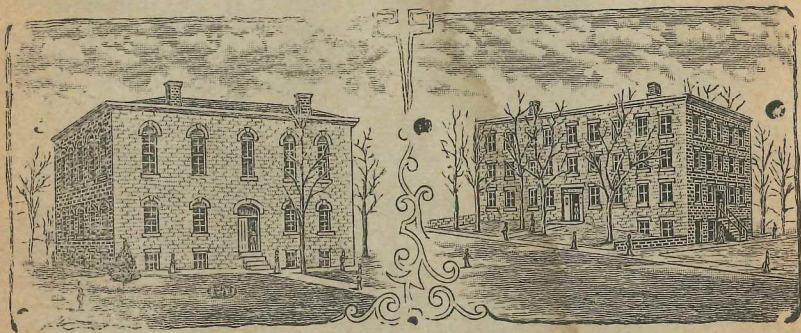
## **J. E. Throckmorton,**

Dealer in Produce, Staple and Fancy Groceries.

MULVANE, KAS.,

# Lane University

LECOMPTON, KANSAS,



*Offers College Advantage at Home Expenses.*

Classical, Scientific, Literary and Normal Courses of Study are Maintained. Our Normal Course leads to a State Certificate.

**TUITION:** One term, \$10; two terms, \$19; three terms, \$27. Incidentals \$1 per term. Ministers' and ministers' children at one-half tuition rates.

**BOARDING HALL** conducted on the cooperative plan, and costs \$1.30 to \$1.50 per week. Rooms partly furnished, 25c per week; rooms completely furnished, 50c per week.

**LANE UNIVERSITY** has a good School of Music, a good Commercial School, affording excellent advantages to all who desire a musical or a commercial education.

**A DIVINITY SCHOOL** conducted by Bishop Mills assisted by Dr. J. P. Landis and others will be in session from May 15th to May 25th, 1900. Tuition, \$2.00. All expenses to those attending not exceed \$8.00.

**LANE UNIVERSITY** is an accredited college under Kansas laws. Send for a catalogue before deciding to go elsewhere to college. Address

**C. M. BROOKE, President,**  
**Lecompton, Kansas**