

JOURNAL

Little Rock Annual Conference
The Methodist Church

Ninety-third Session

(EIGHTH SESSION OF UNITED CHURCH)

OCTOBER 30 — NOVEMBER 3

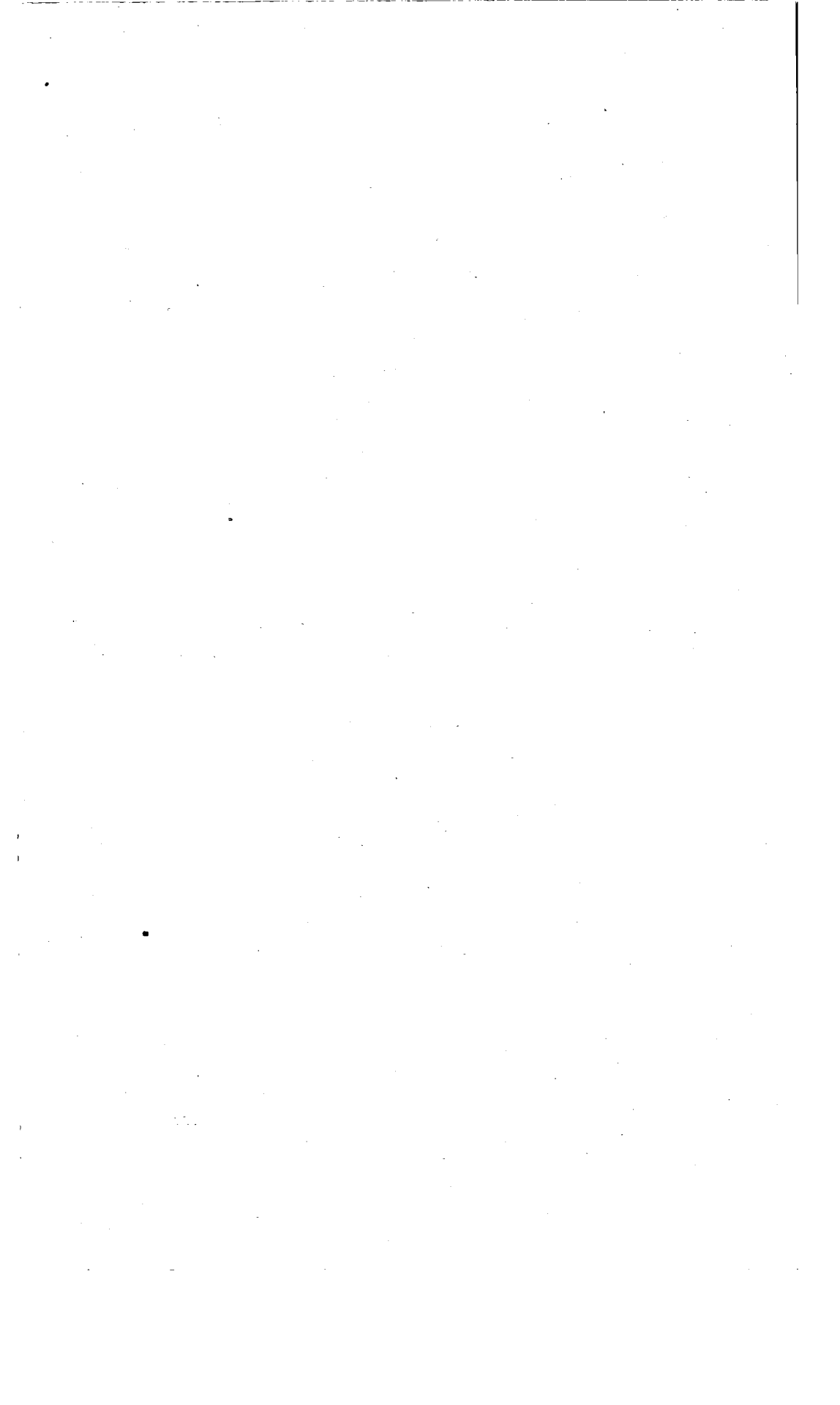
1946

FIRST METHODIST CHURCH

HOT SPRINGS, ARKANSAS

PRICE 50 CENTS

BISHOP PAUL E. MARTIN	President
FRED R. HARRISON	Secretary
C. E. WHITTEN	Statistician
S. T. BAUGH	Editor Journal
C. E. HAYES	Treasurer





BISHOP PAUL E. MARTIN

Resident Bishop of the Arkansas-Louisiana Area
South Central Jurisdiction

OFFICERS OF ANNUAL CONFERENCE

- President—Bishop Paul E. Martin, 723 Center, Little Rock, Ark.
 Secretary—Fred R. Harrison, 120 W. Harding, Pine Bluff, Ark.
 Statistician—Coy E. Whitten, De Witt, Ark.
 Journal Clerk—Robert B. Moore, Arkadelphia, Ark.
 Editor Minutes—Stanley T. Baugh, Hot Springs, Ark.
 Conference Treasurer—C. E. Hayes, 417 Donaghey Bldg., Little Rock, Ark.
 Executive Secretary, Board of Education—Roy E. Fawcett, 326 Exchange Building, Little Rock, Ark.
 Missionary Secretary—W. B. Slack, 820 Prospect, Hot Springs, Ark.
 Conference Secretary of Evangelism—John M. McCormack, Magnolia, Ark.
 President W. S. C. S.—Mrs. E. D. Galloway, 601 N. Palm, Little Rock, Ark.
 Conference Director Youth Work—C. Ray Hozendorf, Prescott, Ark.
 Conference Lay Leader and Director of Adult Work—T. W. McCoy, Benton, Ark.

JURISDICTIONAL ORGANIZATION

- Executive Secretary:—Dr. Paul D. Womeldorf, The South Central Jurisdiction, 804 Colcord Building, Oklahoma City 2, Okla.

CONFERENCE TREASURERS

1. Commission on World Service and Finance—C. E. Hayes, 417 Donaghey Building, Little Rock, Ark.
 Bonded in Aetna Casualty & Surety Co., \$10,000.00.
 Frank L. Eaton & Co., C.P.A., Auditors.
2. Board of Education—J. S. M. Cannon, 1610 Elm, Little Rock, Ark.
 Bonded in U. S. Fidelity & Guaranty Co., \$5,000.00.
 Frank L. Eaton & Co., C.P.A., Auditors.
3. Board of Lay Activities—Miss Virginia Guffey, Exchange Building, Little Rock, Ark.
 Bonded in Fidelity & Guaranty Co., \$3,000.00.
 Frank L. Eaton & Co., C.P.A., Auditors.
4. Arkansas Methodist Children's Home—J. S. M. Cannon, 1610 Elm, Little Rock, Ark.
 Bonded in Aetna Casualty & Surety Co., \$3,000.00.
 R. G. McDaniel, C.P.A., Auditor.
5. Board of Conference Claimants—Otto W. Teague, Pine Bluff, Ark.
 Bonded by Tilson Clark & Co., \$7,500.00.
 Walter F. Theis, C.P.A., Auditor.
6. Board of Missions and Church Extension—Carl Hollis, Warren, Ark.
 Bonded in National Surety Corp., New York, \$5,000.00.
 F. M. Holt, Auditor.
7. Conference Board of Evangelism—John L. Tucker, Little Rock, Ark.
 Bonded in Aetna Casualty & Surety Co., \$500.00.
 Leslie J. Serritt, Auditor.
8. Board of Hospitals and Homes—L. C. Elliott, Little Rock, Ark.
 Bonded in Aetna Casualty & Surety Co., \$500.00.
 Frank L. Eaton & Co., C.P.A., Auditors.

BOARDS, COMMISSIONS AND COMMITTEES

QUADRENNIAL

Bible Board

C. D. Meux, R. C. Walsh, C. H. Farmer, W. T. Bone, Noel Cross, L. O. Lee, S. W. Mooty.

Board of Conference Claimants

One Year: J. A. Newell, Roy Nipper, Orrie L. Thompson, Felix Pugh, J. M. Spicer, Harold D. Sadler, Vice-Chairman.

Two Years: Stanley T. Baugh, Chairman; John W. Rushing, I. A. Love, C. L. Cabe, Louis Cabe.

Three Years: Alton B. Raney, Otto W. Teague, Treasurer; James E. Major, J. D. Reynolds, Wallace Kauffman.

Board of Education

Clerical Members: Aubrey G. Walton, Chairman; W. Neill Hart, Vice Chairman, J. E. Cooper, C. Ray Hozendorf, Edward W. Harris, R. E. Simpson, J. M. Hamilton.

Lay Members: J. S. M. Cannon, Treasurer; Mrs. H. King Wade, T. A. Barton, T. A. Prewitt, Jerry L. Patterson, Albert Graves, Fred Gantt, C. E. Hayes, Miss Beryl Henry.

Youth Representatives: William Elder, Pres. Conf. MYF; Ashley Ross, Sue Plummer.

Executive Secretary: Roy E. Fawcett.

Board of Evangelism

Clerical Members: Kenneth L. Spore, Chairman; Virgil D. Keeley, Vice-Chairman; John L. Tucker, Recording Secretary-Treasurer; John M. McCormack, Conference Secretary; J. D. Baker, Wm. E. Brown, Dan Robinson, H. O. Bolin, Clem Baker, E. T. Miller, C. B. Wyatt, L. C. Gatlin, Clinton Atchley, L. E. Wilson.

Lay Members: C. B. Murry, Don W. Harrell, A. D. May, Edwin Bird, B. S. Hundley, O. A. Graves, C. I. Parsons.

All members of the Cabinet.

Board of Hospitals and Homes

Clerical: Hal H. Pinnell, W. R. Boyd, C. D. Cade, secretary.

Lay: B. T. Fooks, Chairman; Luther Elliott, Dr. T. E. Fuller, Frank Haltom.

Board of Ministerial Training (Appointed by Bishop Martin)

Chairman, Aubrey G. Walton; Secretary, George G. Meyer; Registrar, Charles H. Giessen; Kenneth L. Spore, Edward W. Harris, L. W. Averitt, Fred W. Schwendimann, C. Ray Hozendorf, Roy E. Fawcett, Mark Vaught.

Board of Missions and Church Extension

Clerical: J. Wayne Mann, J. A. Wade, E. D. Galloway, Roland E. Darrow, D. T. Rowe.

Lay: Carl Hollis, Roland Shelton, Mrs. T. H. McLean, Ben Laney, C. L. McNutt, J. S. M. Cannon.

Members at Large: J. L. Dedman, C. E. Whitten, J. Edward Dunlap, Homer M. Adkins (Juris. Conf. Board), Ralph Sewell, W. B. Slack.

Officers of Board of Missions: Chairman, J. L. Dedman; Vice-Chairman, J. Wayne Mann; Treasurer, Carl Hollis; J. E. Dunlap.

Officers of Board of Church Extension: Chairman: D. T. Rowe; Sec-

retary, J. A. Wade (To whom applications are to be sent); Treasurer, Roland E. Darrow.

Ex-Officio Members: Two young men and two young women to be elected by Conference Youth Work; W. B. Slack, Conference Missionary Secretary; T. W. McCoy, Conference Lay Leader; Mrs. Eulis DeWitt Galloway, President, Little Rock Conference W.S.C.S.

Board of Temperance

Clerical: A. E. Jacobs, Chairman; Vice-Chairman, James A. Simpson; Secretary, W. D. Golden; B. F. Fitzhugh, Louis W. Averitt, T. D. Spruce.

Lay: Mrs. George Downing, J. O. Hutchinson, H. R. Coffman, C. E. Dunlap, J. T. McAlister, Buren Hardin, Judge A. P. Steel.

Members at Large: Mrs. Floyd Crouse, A. C. Rogers, William Elder and Wayne Banks.

Committee on Accepted Supply Pastors

Chairman, R. E. Simpson; Vice-Chairman, J. D. Montgomery; Charles H. Giessen; J. M. Hamilton, John L. Tucker, John B. Hefley, R. B. Moore, Clinton Atchley, Ralph Clayton, Secretary.

Committee of Conference Relations and Ministerial Qualifications

One Year: J. D. Montgomery, Vice-Chairman; S. B. Mann, R. E. Simpson, A. W. Hamilton, T. M. Armstrong, Fred L. Arnold.

Two Years: Chairman, H. O. Bolin; O. C. Birdwell, M. W. Miller, Secretary; O. E. Holmes, Alfred Doss, C. B. Wyatt.

Three Years: Charles H. Giessen, Chairman; John B. Hefley, R. B. Moore, George E. Reutz, J. Wayne Mann, A. C. Carraway.

Commission on Christian Literature

Clerical, Chairman, M. E. Scott; Secretary, B. F. Fitzhugh; O. C. Birdwell, Clinton Atchley, I. A. Love, George W. Robertson, W. S. Cazort.

Lay: R. L. Keith Mrs. O. E. Westfall, Roland Shelton, Roy McKinney, Leslie Helvie, W. R. Hambricht, Seth C. Reynolds.

Commission on Ministerial Sustentation

Clerical: Chairman, R. H. Cannon; Secretary, Rufus F. Sorrells, John A. Newell, L. C. Gatlin, George W. Warren, Herman D. Ginther, W. C. Lewis.

Lay: Horace Fisher, J. D. Reynolds, J. T. Thompson, W. W. Taylor, G. A. Brown, Dr. Hubert Shull, R. R. Woolard.

Commission on World Service and Finance

Clerical: Chairman, John L. Hoover; Secretary, R. A. Teeter; John B. Hefley, O. E. Holmes, W. R. Burks.

Lay: C. A. Overstreet, J. T. Thompson, Fay Joyner, W. W. Taylor, Syd McMath, W. R. Boney, H. R. Coffman.

Town and Country Commission

Bishop Paul E. Martin; Chairman, W. B. Slack, Conference Missionary Secretary; Vice-Chairman, J. A. Newell; Secretary, Robert W. Core; Treasurer, T. A. Prewitt, Board of Education; Mrs. Eulis DeWitt Galloway, President, Little Rock Conference W.S.C.S.; J. L. Dedman, Board of Missions and Church Extension; Mrs. H. King Wade, Representative W.S.C.S.; Kenneth L. Spore, Board of Evangelism; T. W. McCoy, Conference Lay Leader; T. T. McNeal, Representative of the Cabinet. Other clerical members: George W. Warren, L. O. Lee, John W. Rushing, W. B. Savage; Laymen: Horace Taylor, H. G. Williamson, Francis Wallis, Ira Wilson, Clyde Standridge, J. L. Messamore; Rev. Roy E. Fawcett, Executive Secretary, Board of Education.

General and Jurisdictional Conference Board Members

General Boards: Missions and Church Extension, J. T. Thompson; The Committee of Two Hundred of the Crusade for Christ, Connor Morehead.

Jurisdictional Boards: Education, Roy E. Fawcett; Youth, Dorothy Bowers; Evangelism, Mrs. T. H. McLean; Missions, Homer M. Atkins; Member of Committee on Arrangements and Expenses for the Jurisdictional Conference of 1948, Connor Morehead.

Trustees Southern Methodist University

Clerical: E. Clifton Rule.

Lay: J. D. Reynolds.

ANNUAL BOARDS AND COMMITTEES**Committee on Courtesies**

Mark Vaught, W. B. Slack, J. M. Hamilton.

Committee on Conference Journal

C. Ray Hozendorf, Alfred I. Doss, John B. Hefley.

Board of Trustees, Methodist Children's Home

Connor Morehead, Chairman; George Burden, Dr. T. E. Fuller, Harold D. Sadler, J. L. Dedman.

Board of Trustees, Hendrix College

Alton B. Raney, Chairman; Aubrey G. Walton, C. E. Hayes, Wallace Townsend, Connor Morehead, W. P. Gulley, E. C. Rule, J. L. Longino, George Pike, Fred R. Harrison, Albert O. Graves, Mrs. W. P. McDermott, Ed McCuiston, Dr. J. Shelton Rushing, Henry F. Trotter, Lewis P. Mann.

Board of Trustees, Little Rock Annual Conference

One Year: Thomas S. Busbee, R. H. Cannon, Burney Wilson.

Two Years: Judge D. L. Purkins, George W. Robertson, Clair Cargile.

Three Years: J. E. Cooper, J. A. Henderson, Sam J. Wilson.

Board of Trustees, Methodist Hospital of Arkansas, Inc.

B. T. Fooks, Chairman; Homer M. Adkins, E. Clifton Rule, Aubrey G. Walton, Carl Hollis, Don Harrell, Connor Morehead, Kenneth L. Spore, E. M. Sharp, Dr. J. M. Proctor, Ernest Powledge, Tom W. Stone, Mrs. H. King Wade, J. L. Dedman, Henry F. Trotter, Bishop Paul E. Martin.

Little Rock Conference Historical Society

Harold D. Sadler, Chairman; Stanley T. Baugh, Secretary; Kenneth L. Spore, Custodian of Records; Mrs. F. M. Williams, R. B. Moore, J. A. Wade, Fred R. Harrison, J. M. Workman, J. S. M. Cannon, Miss Henry McKinnon.

Board of Managers, Pastor's School

Aubrey G. Walton, R. B. Moore, J. L. Dedman, Mrs. T. S. Lovett, W. Neill Hart, Roy E. Fawcett, C. Ray Hozendorf. Cabinet Representative, Arthur Terry.

Arkansas Methodist Commission

John L. Hoover, Burney Wilson, J. S. M. Cannon, A. G. Walton, Dr. O. D. Campbell, O. C. Landers.

Board of Directors Arkansas Anti-Saloon League

J. Elmo Young, Dr. J. Shelton Rushing, R. E. Fawcett, J. P. Johnson, J. E. Townsend, Judge H. M. Stephens, C. L. Cabe.

Board of Lay Activities

District Lay Leaders and Associates:

Arkadelphia District—Lay Leader: Lyman Cook, Benton; Associates: R. L. Keith, Hot Springs; Horace Taylor, Sparkman; Horace Fisher, Malvern; B. Murry, Arkadelphia.

Camden District—Lay Leader: R. H. Launius, Bearden; Associates: J. W. Boyd, Smackover; Roy Kilgore, Fordyce; M. E. Peace, Magnolia; E. C. Powledge, El Dorado.

Little Rock District—Lay Leader: Roland Shelton, Little Rock; Associates: J. S. M. Cannon, Little Rock; Clarence Richey, Lonoke; George Jensen, Hazen; Alton B. Raney, Little Rock.

Monticello District—Lay Leader: T. A. Prewitt, Tillar; Associates: M. H. Russell, Lake Village; Fay Joyner, McGehee; L. T. Barnes, Hamburg; Carl Hollis, Warren.

Pine Bluff District—Lay Leader: Sidney Good, Pine Bluff; Associates: Coates Mitchell, Sheridan; Jerry L. Patterson, Pine Bluff; C. L. McNutt, Stuttgart; B. S. Hundley, Star City.

Prescott District—Lay Leader: H. M. Stephens, Blevins; Associates: D. C. Humphrey, Delight; Marvin Boyd, Emmett; Chase Stephens, Gurdon; Boyd Tackett, Nashville.

Texarkana District—Lay Leader: Fred Gantt, Foreman; Associates: K. H. Skinner, Mena; H. L. Evans, Ashdown; L. J. Thompson, Texarkana; J. R. Meaders, Lewisville.

Committee On District Conference Journals

Hal H. Pinnell, R. C. Walsh, Curtis Williams, I. A. Love, C. R. Andrews, Eldred Blakeley, C. B. Pixley.

Committee on Investigation (Appointed by Bishop Martin)

Kenneth L. Spore, J. L. Hoover, W. Neill Hart, T. M. Armstrong, Doyle T. Rowe.

Committee on Memoirs

K. L. Spore, Chairman; J. L. Hoover, Vice-Chairman; John W. McCormack, Secretary; R. A. Teeter, Otto W. Teague, C. C. Vanzant, J. A. Wade.

Committee on Public Worship

W. B. Slack, J. D. Baker, Curtis Williams, J. E. Dunlap, S. K. Burnett, David Hankins, Dewell Jackson, J. E. Cooper.

Committee on Resolutions

George W. Warren, C. D. Cade, R. O. Beck, Richard T. Perry.

District Committees on Church Location and Building

Arkadelphia: John B. Hefley, Curtis Williams, C. B. Murry, Horace Fisher, Tom Stone.

Camden: O. C. Birdwell, W. R. Burks, T. D. Spruce, J. D. Reynolds.

Little Rock: Clinton Atchley, L. C. Gatlin, E. D. Galloway, J. S. M. Cannon, Luther Elliott, Jess C. Conner.

Monticello: C. E. Whitten, Edwin Bird, Louis W. Ederington, J. C. Nichols.

Pine Bluff: B. S. Hundley, Fred Moore, C. L. McNutt, I. A. Love, R. H. Cannon.

Prescott: O. A. Graves, J. C. Woodul, R. A. Teeter, Odell Garrett, C. Ray Hozendorf.

Texarkana: M. E. Scott, Herbert Evans, S. P. Norwood, C. I. Parsons, J. Wayne Mann, Fred Arnold.

Press Representative—R. E. Simpson.

Conference Representative to Attend Board of Temperance Meeting in Chicago, Jan. 29-30, 1947—Rufus F. Sorrells.

Committee on Unpaid Balance of Crusade for Christ

Connor Morehead, Edward W. Harris, J. M. Hamilton.

Episcopal Residence Committee

Joe T. Thompson, E. C. Rule, Mrs. H. King Wade.

THE METHODIST CHURCH

9

CONFERENCE DIRECTORY, 1946 - 1947

Name	Post Office	Appointment
1. Alston, P. D.	817 Rock Island St., El Dorado, Ark.	Centennial
2. Andrews, C. R.	Roe, Arkansas	Roe Circuit
3. Armstrong, T. M.	Sheridan, Arkansas	Sheridan
4. Arnold, Fred L.	204 East 16th St., Texarkana, Ark.	Fairview
5. Arnold, Wm. L.		
6. Atchley, C. M.	Ashdown, Arkansas	Ashdown
7. Ault, H. A. F. (Re.)	Princeton, Arkansas	Princeton Circuit
8. Averitt, Louis W.	2314 Park Ave., Little Rock, Ark.	Assoc., Winfield
9. Bailey, G. C.	R 3, Ashdown, Arkansas	Richmond Circuit
10. Baker, Clem	Portland, Arkansas	Portland-Parkdale
11. Baker, J. D. (Re.)	1400 Central Ave., Hot Springs, Ark.	Retired
12. Banks, Wayne	S.M.U., Dallas, Texas	Perkins School of Theology
13. Barnett, M. O. (Re.)	Gould, Arkansas	Retired
14. Barth, George J.	R 1, Altheimer, Arkansas	Swann Lake
15. Baugh, S. T.	408 Prospect Ave., Hot Springs, Ark.	Grand Ave.
16. Baughman, Charles W.	S.M.U., Dallas, Texas	Perkins School of Theology
17. Bearden, A. J.	Hermitage, Arkansas	Hermitage Circuit
18. Beasley, Robert S.	Carthage, Arkansas	Carthage-Tulip
19. Beck, Robert Owen	Eudora, Arkansas	Eudora
20. Bell, Virgil C.	Hendrix College, Conway, Ark.	Carlisle Circuit
21. Birdwell, O. C.	R 1, El Dorado, Arkansas	Parker's Chapel
22. Blakeley, G. E.	Foreman, Arkansas	Foreman
23. Bolin, H. O.	Stuttgart, Arkansas	Grand Avenue
24. Bone, W. T.	Watson, Arkansas	Watson
25. Boyd, W. R.	Hazen, Arkansas	Hazen
26. Brown, Wm. E.	Sixth & Pine, Pine Bluff, Ark.	First Church
27. Bryant, S. B.	Dalark, Arkansas	Dalark Circuit
28. Burks, W. R.	Smackover, Arkansas	Smackover
29. Burnett, S. K. (Re.)	615 Ward Ave., Hot Springs, Ark.	Retired
30. Burroughs, Albert	R 1, Hot Springs, Arkansas	Couchwood Circuit
31. Cade, C. D.	1904 W. 11th, Pine Bluff, Ark.	Hawley Memorial
32. Cagle, George L.	Humphrey, Arkansas	Humphrey-Sunshine
33. Calloway, Wallace	Hospital, U. S. Army	
34. Campbell, W. F. (Re.)	812 W. 15th, Arkadelphia, Ark.	Retired
35. Cannon, R. H.	Fredericksburg, Va.	Retired
36. Cannon, R. H.	Altheimer, Arkansas	Altheimer-Wabbaseka
37. Caraway, A. C.	207 Barton St., Little Rock, Ark.	Capitol View
38. Carithers, K. K.	Glenwood, Arkansas	Glenwood Circuit
39. Carithers, Mrs. K. K.	Glenwood, Ark.	Assoc. Pastor, Glenwood Circuit
40. Cazort, W. S.	Mt. Ida, Arkansas	Mt. Ida Circuit
41. Chambers, W. H.	Pearcy, Arkansas	Pearcy Circuit
42. Christie, A. J.	2202 N. Beech St., Texarkana, Ark.	Texarkana Dist.
43. Christie, Francis	S.M.U., Dallas, Texas	Perkins School of Theology
44. Christie, James Edward	S.M.U., Dallas, Texas	Perkins School of Theology
45. Clark, T. P. (Re.)	Conway, Arkansas	Retired
46. Clayton, J. Ralph	Lake Village, Arkansas	Lake Village
47. Cooper, J. E.	Hope, Arkansas	Hope
48. Core, Robert W.	Blevins, Arkansas	Blevins Circuit
49. Crain, R. M.	Hatfield, Arkansas	Hatfield Circuit
50. Criswell, J. L. (Re.)	1459 High St., Paris, Ky.	Retired
51. Cross, Noel	Murfreesboro, Arkansas	Murfreesboro
52. Daniels, O. L.	Junction City, Arkansas	Junction City
53. Darrow, Roland E.	Monticello, Arkansas	Monticello
54. Davis, C. B. (Re.)	Bokchito, Okla.	Retired
55. Davis, Jeff	Arkansas City, Arkansas	Arkansas City-Kelso
56. Dean, Gerald C.	S.M.U., Dallas, Texas	Perkins School of Theology
57. DeBlack, Alfred	Mabelvale, Arkansas	Mabelvale
58. Dedman, J. L.	305 Greening, Camden, Arkansas	First Church
59. Diffie, J. R.	Traskwood, Arkansas	Traskwood Circuit
60. Diffie, Rayford L.	Friendship, Ark.	Friendship, Circuit
61. Doak, F. P. (Re.)	Nashville, Arkansas	Retired
62. Doss, Alfred	2408 Mable St., Little Rock, Ark.	Henderson
63. Dunlap, J. Edward	Lonoke, Arkansas	Lonoke
64. Dunn, J. D. (Re.)	R 3, El Dorado, Arkansas	Retired
65. Durham, S. L. (Re.)	Sheridan, Arkansas	Sheridan Circuit
66. Elder, William	Hendrix College, Conway, Ark.	DeValls Blf-Chen.
67. Evans, L. W. (Re.)	715 Plum Street, Pine Bluff, Arkansas	Retired
68. Fair, Cagle	S.M.U., Dallas, Texas	Perkins School of Theology
69. Farmer, C. H.	2997 Summit St., Little Rock, Ark.	28th Street
70. Farr, Roy E. (Re.)	211 Morrison Ave., Hot Springs, Ark.	Retired
71. Fawcett, Roy E.	326 Exchg. Bldg. Little Rock, Ark.	Ex. Secy. Bd. Ed.
72. Fikes, G. P. (Re.)	2107 Chestnut St., Pine Bluff, Ark.	Retired
73. Fincher, W. W. (Re.)	Stamps, Arkansas	Sardis-Shiloh
74. Fitzhugh, B. F.	Bauxite, Arkansas	Bauxite-Sardis
75. Fulkerson, J. F.	221 East 22nd St., Little Rock, Ark.	Scott Street
76. Galloway, Eulis Dewitt	601 N. Palm St., Little Rock, Ark.	Pulaski Heights

LITTLE ROCK CONFERENCE

Name	Post Office	Appointment
77. Gatlin, L. C.	R 3, Little Rock, Ark.	Douglasville-Geyer Spgs.
78. Giessen, Chas. H.	1209 S. Washington St. Little Rock, Ark.	Vantrease
79. Gilliam, C. H.	Mt. Valley Rt., Hot Spdngs, Ark.	Tigert-Ftn. Lake
80. Ginther, H. D.	Monticello, Arkansas	District Rural Worker
81. Ginnings, J. A. (Re.)	Foulke, Arkansas	Retired
82. Golden, W. D.	Dermott, Arkansas	Dermott
83. Hale, Kirvin A.	Waldo, Arkansas	Waldo
84. Hall, C. O.	Village, Arkansas	Village-Dumas
85. Hamilton, A. W.	Sherrill, Ark.	Sherrill-Tucker
86. Hamilton, J. M.	Benton, Arkansas	Benton
87. Hammons, John W.	Chaplain, U. S. Navy	First Ch. Q. C., Little Rock
88. Hankins, David	Arkadelphia, Arkansas	Arkadelphia Circuit
89. Hanna, E. D. (Re.)	112 Summer St., Hot Springs, Ark.	Retired
90. Harrell, Van W.	Prescott, Arkansas	Prescott District
91. Harris, Edward W.	Sixth & Laurel Sts., Texarkana, Ark.	First Church
92. Harrison, Fred R.	120 W. Harding Ave., Pine Bluff, Ark.	P.B. District
93. Hart, W. Neill	1209 Schiller St., Little Rock, Ark.	Asbury
94. Harvey, Forney	Keo, Arkansas	Keo-Tomberlin-Humnoke
95. Hefley, John B.	Arkadelphia, Arkansas	First Church
96. Henderson, J. A. (Re.)	1419 15th St., Arkadelphia, Ark.	Retired
97. Holland, Herston R.	Stephens, Arkansas	Stephens
98. Holmes, O. E.	Crossett, Arkansas	Crossett
99. Hoover, John L.	610 Dakota St., Pine Bluff, Ark.	Carr Memorial
100. Hoover, Wendell	Wilmar, Arkansas	Wilmar Circuit
101. Hopkins, W. T. (Re.)	4600 W. 12th St., Little Rock, Ark.	Retired
102. Hozendorf, C. Ray	Prescott, Arkansas	First Church
103. Hundley, L. E. N. (Re.)	520 W. 26th St., Pine Bluff, Ark.	Retired
104. Hunter, Joseph W.	Hampton, Arkansas	Hampton-Harrell
105. Jacobs, A. E.	Norphlett, Arkansas	Norphlett
106. Keeley, Virgil D.	Stuttgart, Arkansas	First Church
107. Kerr, George	401 Kirby Street, Texarkana, Ark.	College Hill
108. Keith, J. Edwin	S.M.U., Dallas, Texas	Perkins School of Theology
109. Lawrence, C. E.	Cherry Hill, Arkansas	Cherry Hill Circuit
110. Lee, L. O.	R 1, Cabot, Arkansas	Austin Circuit
111. Leonard, J. L. (Re.)	2123 S. Valmar St., Little Rock, Ark.	Retired
112. Lewis, Earl	Chaplain, U. S. Navy	Lonoke Q. C.
113. Lewis, W. C.	Mineral Springs, Ark.	Mineral Springs Circuit
114. Love, Ira A.	Gillett, Arkansas	Gillett
115. McAfee, E. T.	Forester, Ark.	Forester Circuit
116. McCammon, Donald J.	S.M.U., Dallas, Texas	Perkins School of Theology
117. McCammon, Robert	Wilmot, Arkansas	Wilmot
118. McCauley, Dewey	R 1, Texarkana, Arkansas	Texarkana Circuit
119. McCormack, John M.	Magnolia, Arkansas	First Church
120. McNeal, T. T.	Monticello, Arkansas	Monticello District
121. McSwain, R. D.	Washington, Ark.	Washington Circuit
122. Major, James E.	1011 McAlmont St., Little Rock, Ark.	Hunter Mem.
123. Mann, D. Mouzon	1610 Elm Street, Little Rock, Ark.	Oak Forest
124. Mann, J. Wayne	Stamps, Arkansas	Stamps
125. Mann, S. B.	Huttig, Arkansas	Huttig
126. Marsh, Roland	Chaplain, U. S. Navy	First Church Pine Bluff, Q.C.
127. Martin, J. R.	R 2, Magnolia, Arkansas	Marysville
128. Meeks, Welton	Chaplain Asst. U. S. Navy	First Ch., Pine Bluff, Q.C.
129. Meux, C. D.	Amity, Arkansas	Amity Circuit
130. Meyer, George G.	Fordyce, Arkansas	Fordyce
131. Miller, E. T.	Taylor, Arkansas	Taylor Circuit
132. Miller, M. W.	McGehee, Arkansas	McGehee
133. Montgomery, J. D.	222 Woodlawn, Hot Springs, Ark.	Oaklawn
134. Moore, Robert B.	1060 Caddo St., Arkadelphia, Ark.	Arkadelphia Dist.
135. Mooty, S. W.	Wilton, Arkansas	Wilton Circuit
136. Mooty, Mrs. S. W.	Wilton, Arkansas	Assoc. Pastor, Wilton Circuit
137. Morehead, Connor	El Dorado, Arkansas	First Church
138. Nabors, H. R.	Chidester, Arkansas	Harmony Grove
139. Nethercutt, J. W. (Re.)	Traskwood, Ark.	Retired
140. Newell, J. A.	Sparkman, Ark.	Sparkman-Sardis
141. Nunn, T. E. (Re.)	R 3, Box 34-A, Tulsa, Okla.	Retired
142. Oliver, Albert	Hickory Plains, Ark.	Hickory Plains Circuit
143. Onstead, W. C.	S.M.U., Dallas, Texas	Perkins School of Theology
144. Parsons, Clyde T.	Carlisle, Arkansas	Carlisle
145. Perry, Richard T.	R 5, El Dorado, Ark.	Retired
146. Pickering, J. B. (Re.)	Warren, Arkansas	Warren
147. Pinnell, Hal H.	Doddridge, Arkansas	Doddridge Circuit
148. Pixley, G. B.	Almyra, Arkansas	Retired
149. Rail, R. J. (Re.)	Mountain Pine, Ark.	Hot Springs Circuit
150. Reutz, Fred W.	Gurdon, Arkansas	Gurdon
151. Reutz, George E.	723 Center St., Little Rock	Assoc. Pastor First Ch.
152. Richards, C. W.	R 1, Pine Bluff, Arkansas	Good Faith
153. Richert, Hursel	Wilmar, Arkansas	Wilmar Circuit
154. Riggin, Robt. L.	Emory University, Ga.	Professor, Emory University
155. Rhodes, R. C.		

Name	Post Office	Appointment
156. Robertson, George W.	Rison, Arkansas	Rison
157. Robinson, Dan R.	Malvern, Arkansas	Malvern
158. Robinson, Joe H.	Emmett, Arkansas	Emmett Circuit
159. Rodgers, J. T. (Re.)	St. Charles, Arkansas	Retired
160. Rogers, A. C.	Star City, Arkansas	Star City Circuit
161. Rogers, Coy	Leola, Arkansas	Leola Circuit
162. Rogers, J. D. (Re.)	335 Stoner, Shreveport, La.	Retired
163. Rose, M. T. (Re.)	Arkinda, Arkansas Rt. 1	Retired
164. Roe, Joe B.	Tillar, Arkansas	Tillar-Winchester
165. Rowe, Doyle T.	De Queen, Arkansas	De Queen
166. Roy, Claude R.	Lockesburg, Arkansas	Lockesburg Circuit
167. Rule, E. Clifton	1301 Schiller St., Little Rock	Little Rock Dist.
168. Rushing, John W.	Dierks, Arkansas	Dierks Circuit
169. Sadler, Harold D.	Rison, Arkansas	Supernumerary
170. Savage, W. Braska	Horatio, Arkansas	Horatio Circuit
171. Schwendimann, Fred W.	England, Arkansas	England
172. Scott, Harould	A.&M. College, Monticello, Ark.	P. E. Martin Chpl.
173. Scott, M. E.	R 1, Camden, Arkansas	Fairview
174. Sewell, James R.	1715 N. Pierce St., Little Rock, Ark.	Forest Park
175. Simpson, James A.	Lewisville, Ark.	Lewisville
176. Simpson, J. Logan	R 1, Mena, Arkansas	Shady Grove
177. Simpson, John A. (Re.)	R 2, Mena, Arkansas	Retired
178. Simpson, R. E.	100 Olive St., Hot Springs	Supt. Methodist Hosp.
179. Sims, J. B. (Re.)	Box 56, Niland, Cal.	Retired
180. Slack, Wm. B.	820 Prospect Ave., Hot Springs, Ark.	First Church
181. Small, W. I.	Holly Springs, Arkansas	Holly Springs Circuit
182. Sorrells, Rufus F.	Dumas, Ark.	Dumas
183. Sparks, L. R. (Re.)	Louann, Arkansas	Louann Circuit
184. Spore, Kenneth L.	1601 Louisiana St., Little Rock	Winfield Memorial
185. Spruce, T. D.	Bearden, Arkansas	Bearden
186. Stephens, Bryan	Almyra, Arkansas	Almyra
187. Stonecipher, A. N.	Magnolia, Ark.	Columbia Circuit
188. Swain, James B.	1208 W. 16th, Pine Bluff, Ark.	Rowell Circuit
189. Swift, Clyde T.	Strong, Arkansas	Strong Circuit
190. Teague, Otto W.	1406 Pine St., Pine Bluff, Ark.	Lakeside
191. Teefer, R. A.	Nashville, Arkansas	Nashville
192. Terry, Arthur	101 Cleveland Ave., Camden, Ark.	Camden Dist.
193. Thomas, J. W. (Re.)	Portland, Ark.	Retired
194. Thompson, C. M. (Re.)	Sparkman, Ark.	Retired
195. Thompson, Orrie L.	Des Arc, Arkansas	Des Arc-New Bethel
196. Tucker, John L.	4000 W. 13th, Little Rock, Ark.	Highland
197. Townsend, George	R.F.D., Dierks, Ark.	Langley-New Hope
198. Van Horn, J. C.	Fountain Hill, Ark.	Fountain Hill Circuit
199. Vanzant, C. C.	Thornton, Arkansas	Thornton Circuit
200. Vaught, Mark	Mena, Arkansas	Mena
201. Vinson, Everett M.	S.M.U., Dallas, Texas	Perkins School of Theology
202. Wade, J. A.	Magnolia, Arkansas	Jackson Street
203. Walsh, R. C.	Okolona, Arkansas	Okolona Circuit
204. Walton, Aubrey G.	723 Center St., Little Rock, Ark.	First Church
205. Walthall, W. V.	Bayou Meto, Arkansas	Bayou Meto Circuit
206. Warren, George W.	Chidester, Arkansas	Chidester
207. Weems, D. A.	Suite 1617, 71 W. 23rd St., New York, N. Y.	Service Men's Council
208. West, W. E.	c/o West Grocery, Bearden, Ark.	Pine Bluff Circuit
209. White, Osborne	Delight, Arkansas	Delight Circuit
210. Whitten, C. E.	De Witt, Arkansas	De Witt
211. Wilcox D. L. (Re.)	Malvern, Arkansas	Retired
212. Williams, Curtis W.	No. 5 Westbrook, Hot Springs	Pullman Heights
213. Williams, Howard	Bryant, Arkansas	Bryant Circuit
214. Wilson, L. Gray	Malvern, Arkansas	Keith Memorial
215. Wilson, L. E.	R 4, Dixon Rd., Little Rock, Ark.	Primrose
216. Workman, J. M. (Re.)	Conway, Arkansas	Retired
217. Wyatt, C. B.	Grady, Arkansas	Grady-Gould
218. Youngblood, A. N.	Bingen, Arkansas	Bingen Circuit

LOCAL PREACHERS AND ADDRESSES BY DISTRICTS

Arkadelphia District

E. H. Eckler, L. E.	Hot Springs, Ark.
W. H. Chambers, L. E.	Bonnerdale Rd., Hot Springs, Ark.
H. A. Brooks, L. D.	Malvern, Ark.
K. S. L. Cooke, L. D.	Malvern, Ark.
W. M. Warren, L. D.	Hot Springs, Ark.
R. L. Burroughs, L. D.	Bismarck, Ark.
W. M. Anthony, L. P.	Bismarck, Ark.
Harvey Moore, L. D.	Arkadelphia, Ark.
H. H. Rogers, L. P.	Arkadelphia, Ark.
J. F. Walker, L. P.	Holly Springs, Ark.
Joe Warren, L. P.	Hot Springs, Ark.
T. W. Phillips, L. P.	Hot Springs, Ark.
William Brady, L. P.	Malvern, Ark.
C. A. Meyers, L. P.	Bismarck, Ark.
Wm. B. Slack, Jr., L. P.	Hot Springs, Ark.
C. C. Martin, L. P.	Hot Springs, Ark.

CAMDEN DISTRICT

G. N. Cannon, L. E.	Stephens, Ark.
S. R. Twitty, L. E.	Fordyce, Ark.
J. W. Gathright, L. D.	Bolding, Ark.
H. C. George, L. D.	Magnolia, Ark.
J. H. Ross, L. D.	Fordyce, Ark.
C. B. Harris, L. P.	El Dorado, Ark.
I. W. Mellard, L. P.	Rt. 3, El Dorado, Ark.
Chas. Williard Edwards, L. P.	Mt. Holly, Ark.
Scott Thomas Christie, L. P.	Junction City, Ark.

LITTLE ROCK DISTRICT

Jeff Smith, L. E.	Little Rock, Ark.
J. A. Wallace, L. E.	Little Rock, Ark.
Leonard Bowden, L. D.	Little Rock, Ark.
Eugene Haun, L. P.	Little Rock, Ark.
Charles Hegarty, L. P.	Little Rock, Ark.
A. A. Kidd, L. P.	Little Rock, Ark.
Charles Parker, L. P.	Carlisle, Ark.
K. V. Probst, L. P.	Little Rock, Ark.
James Ricks, L. P.	Little Rock, Ark.
J. B. Withee, L. P.	Little Rock, Ark.
Eugene Gilliam	Carlisle, Ark., R.F.D.
Alfred Johannes	Little Rock, Ark.

MONTICELLO DISTRICT

Roy W. Bevan, L. P.	S.M.U., Dallas, Texas
J. E. Griner, L. P.	Warren, Ark.
Sanford Fong, L. P.	S.M.U., Dallas, Texas
R. L. Tipton,	Hamburg, Ark.
Donald Smith, L. P.	U. S. Army
A. C. White, L. P.	Rt. 1, Fountain Hill, Ark.

PINE BLUFF DISTRICT

Billy Comer, L. P.	Jacksonville, Texas
Barry Bailey, L. P.	Sheridan, Ark.
Charles Mattmiller, L. P.	Gillett, Ark.
Wallace Steffey, L. P.	Pine Bluff, Ark.
Claude Clark, L. P.	De Witt, Ark.
James B. Swain, L. P.	1208 W. 16th, Pine Bluff, Ark.

PRESCOTT DISTRICT

C. E. Hughes, L. E.	Nashville, Ark.
J. O. Gold, L. E.	Washington, Ark.

Zane A. Williams, L. P. ----- Nashville, Ark.
 Mrs. K. K. Carithers, L. P. ----- Glenwood, Ark.
 David Williams, L. P. ----- Nashville, Ark.

TEXARKANA DISTRICT

John N. Simpson, L. E. ----- Rt. 2, Mena, Ark.
 R. P. Geyer, L. E. ----- Mena, Ark.
 M. T. Rose, L. D. ----- Rt. 1, Arkinda, Ark.

BOARD OF MINISTERIAL TRAINING**Report No. 1**

Undergraduates including those who are on trial and those who are members in full connection showing the number () of unexcused years since beginning course of study. "S" means attended school last year.

First Year

Alfred DeBlack (1)
 David Hankins (1)
 Clyde Swift (1)
 Osborne White (1)
 Donald James McCammon (1)
 Everett M. Vinson (1)
 Wallace Calloway (2)
 Roland Marsh (2)

Second Year

Gerald Clyde Dean (1) S
 O. L. Daniel (3)
 Clyde Parsons (2) S
 Joseph Wiley Hunter (2)
 Charles W. Baughman (1) S
 Francis Christie (2), S

James Ed Christie (1) S
 Wayne Banks (1) S
 J. Edwin Keith (1) S

Third Years

Joe B. Roe (2) S
 Kirvin A. Hale (3)
 Herston R. Holland (3)
 W. B. Savage (3)

Fourth Year

K. K. Carrithers (4)

*** Graduate Course Fifth Year**

Orrie L. Thompson (5)
 W. D. Golden (7)

*** Graduate Course Sixth Year**

Joe H. Robinson (5)

* Two Graduate courses required of those Admitted on Trial under the $\frac{3}{4}$ rule.

EDWARD HARRIS, Chairman
 CHAS. H. GIESSEN, Registrar

Report No. 2

The following are the Accepted Supply Pastors in the course of study showing in () the number of unexcused years since the beginning of the course of study. "S" means attended school last year.

Admission on Trial

William Elder (1) S
 O. W. Hoover (1) S
 Forney Harvey (5)
 Fred W. Reutz (1) S
 Coy A. Rogers (1) S
 Albert Oliver (1) S
 Williard B. Lockhart (2)
 Baxton Bryant (1)
 O. W. Barbaree (1)
 Virgil Bell (1)
 Mac Becksted (1)
 Harold Scott (1)
 Jeff Davis (1)
 Cagle E. Fair (1)
 R. R. Coley (1)
 W. C. Onstead (1)
 C. E. Lawrence (1)
 S. M. Stollard (1)
 J. L. Simpson (1)

First Year

J. C. VanHorn (5)
 Robert L. Riggins (2) S
 Howard Williams (1) S

Second Year

A. H. Burroughs (6)
 W. E. West (5)

Third Year

R. M. Crain (4)
 D. L. McCauley (6)
 Rayford L. Diffie (4) S
 L. Gray Wilson (5) S
 C. A. Simpson (1)

Fourth Year

J. R. Martin (7)
 E. T. McAfee (7)
 R. H. Richert (7)

EDWARD HARRIS, Chairman
 CHAS. H. GIESSEN, Registrar

COMMITTEE ON CONFERENCE RELATIONS AND MINISTERIAL QUALIFICATIONS

Report No. 1

MINISTERS ON TRIAL

First Year	Second Year
Clyde N. Swift (1)	Gerald C. Dean (4) D. E.
Osborne E. White (1)	Clyde T. Parsons (3)
David M. Hankins, Jr. (1)	Omma L. Daniel (3)
Donald James McCammon (1)	Wayne Banks (2)
Everett M. Vinson (1)	Charles W. Baughman (2)
Alfred C. DeBlack (1)	Joseph W. Hunter (2)
Wallace M. Calloway (2)	Francis Christie (2)
Roland Marsh (3) D. E.	James E. Christie (2)
	Bryan Stephens (2)
	Richard McSain (2)
	J. Edwin Keith (2)

The number in parenthesis indicates the number of years on trial.

J. Edwin Wade and Yong Hak Park having failed to pass the Board of Ministerial Training were discontinued.

Ministers Admitted into Full Connection

Charles Robert McCammon	Kirvin A. Hale
D. Mouzon Mann	Wm. B. Savage
Herston R. Holland	Joe B. Roe

Ministers Elected to Deacon's Orders

Raz M. Crain	Joseph B. Roe
Dewey L. McCauley	Wm. B. Savage
Kirvin A. Hale	J. Edwin Keith
Herston R. Holland	

Ministers Elected to Elder's Orders

Philip D. Alston	Joseph H. Robinson
Orrie L. Thompson	Charles R. McCammon

Ministers Retired in 1946

J. D. Baker	W. W. Fincher	L. E. N. Hundley
-------------	---------------	------------------

Harold D. Sadler was given the supernumerary relation for 1946-47.

Alton J. Shirey was given honorable location at his request.

All the above cases were passed by the Committee on Conference Relations and Ministerial Qualifications according to the law of the Church.

The following officers were elected to serve during 1946-47: Chairman, H. O. Bolin; Vice-Chairman, J. D. Montgomery; Secretary, Marion W. Miller.

CHAS. H. GIESSEN, Chairman
JOHN B. HEFLEY, Secretary

COMMITTEE ON ACCEPTED SUPPLY PASTORS

Report No. 1

We your Committee on Accepted Supply Pastors submit the names of the following men to serve as Accepted Supply Pastors for the ensuing year:

Arkadelphia District—Albert Burroughs, J. B. Standfield, S. B. Bryant, Coy Rogers, J. C. Van Horn, Wesley Reutz, Rayford Diffie, L. Gray Wilson.

Camden District—P. D. Alston, J. R. Martin, O. W. Barbaree, H. R. Nabors, W. I. Small.

Little Rock District—William Charles McAmmond Becksted, Albert Oliver, Wm. Elder, Howard Williams, Forney Harvey, Virgil Bell.

Monticello District—A. J. Bearden, O. W. Hoover, Robert L. Riffin, Harould Scott, Jeff Davis.

Pine Bluff District—Willard B. Lockhart, Hursel Richert, W. E. West.

Prescott District—R. R. Coley, Cagle E. Fair, W. C. Onstead, George Townsend, A. N. Youngblood.

Texarkana District—R. M. Crain, C. O. Hall, D. L. McCauley, C. A. Simpson, C. E. Lawrence, E. T. McAfee, Logan Simpson, S. M. Stallard.

Retired Supply Pastors—J. A. Ginnings, M. T. Rose, John N. Simpson, O. C. Robison

Respectfully submitted,

R. E. SIMPSON, Chairman

J. RALPH CLAYTON, Secretary

RETIRED MINISTERS

Ault, H. A. F.
Baker, J. D.
Barnett, M. O.
Burnett, S. K.
Campbell, Wm. F.
Cannon, F. C.
Clark, Thomas P.
Criswell, J. L.
Davis, C. B.
Doak, F. P.
Dunn, J. D.

Durham, S. L.
Evans, L. W.
Farr, R. E.
Fincher, W. W.
Hanna, E. D.
Henderson, J. A.
Hopkins, W. T.
Hundley, L. E. N.
Leonard, J. L.
Nethercutt, J. W.
Nunn, T. W.

Pickering, J. B.
Rail, R. J.
Rodgers, John T.
Rogers, J. D.
Sims, J. B.
Sparks, L. R.
Thomas, J. W.
Thompson, C. M.
Wilcox, D. L.
Workman, J. M.

LAY MEMBERS

Arkadelphia District

Church or Charge

Arkadelphia Sta.
Arkadelphia Ct.
Benton Sta.
Benton Ct.
Carthage-Tulip
Couchwood Ct.
Dalark Ct.
Friendship Ct.
Holly Springs Ct.
Hot Springs Churches:
First Church
Grand Ave.
Oak Lawn
Pullman Heights
Fountain Lake
Tigert-Jones Mills
Hot Springs Ct.
Keith Memorial
Leola Ct.
Malvern Sta.
Princeton Ct.
Sparkman-Sardis
Traskwood Ct.
Percy Ct.

Principal

D. D. McBrien
Mrs. Jim Clark
*Henry Finkbiner
H. H. Goodwin,
Guy Starks
Harvey Lawrence
*C. N. McCaskill
*Jess Ledbetter
Alvin Hood
*Mrs. H. King Wade
*R. L. Keith
Doyle Shirley
Mrs. J. A. Holbrook
Mrs. C. L. Harlin
*Mrs. J. B. Freeze
H. S. Smith
Lillian Van Dusen
W. L. Harrison
*Roy Chamberlain
*Frank Barner
P. H. Taylor
*S. T. Sanders
Miles Traywick

Reserve

P. W. Turrentine
Horace Tull
*Wallace Kauffman
H. W. Raney
Mrs. C. C. Cox
L. May
Harry Fite
R. L. Burroughs
Jack Walker
C. G. Felton
W. E. Mowery
*Mrs. M. E. Wall
H. D. Bennett
Mrs. Ewell Johnson
Mrs. Stella Chisholm
H. A. Rowe
Horton Lawrence
Duke Cooper
H. G. Toler
Dean Harris
Mrs. E. H. Fohrell
E. B. Horton
L. L. Rogers

Camden District**Charge**

Bearden
Camden Churches:
Fairview
First Church
Chidester
El Dorado Churches:
Centennial
First Church
Vantrease
Emerson
Fordyce
Hampton-Harrell
Harmony Grove
Huttig
Junction City
Kingsland
Louann
Magnolia Churches:
First Church
Jackson Street
Marysville
Norphet
Parkers Chpl-Fredonia
Smackover
Stephens
Strong
Thornton
Waldo

Principal

Fred Dial
*A. N. Fogle
*J. D. Reynolds
J. T. Walker, Jr.
J. R. Launius
*G. P. Gammill
Joe Sanders
*Mrs. Robert Blackwell
*Ed Murry
Mrs. S. V. Parker
W. A. Graves
Mrs. H. F. Mayfield
*Mrs. Charles Rogers
H. J. Cook
Mrs. Harold Bratton
E. E. Graham
Roy Nipper
*M. O. Hughes
*Milton Cheairs
*N. F. Sewell
J. W. Byrd
H. H. Medlock
*J. F. Rushing
R. H. Parkham
J. E. O'Daniel

Reserve

Mrs. T. D. Spruce
A. C. Hale
*B. T. Fooks
Mrs. T. H. Benton
Calvin Fudge
E. G. Powledge
*Ralph Mann
Melvin Chambers
Horace Everett
W. H. Dunn
Whit Wilson
Mrs. Frank Duvall
Jess Bishop
J. E. McCoy
Miss Clara Umstead
*Wm. Owen
*P. J. Trammill
C. E. Smith
*Mrs. A. E. Jacobs
H. G. Williamson
*L. E. Tennyson, Jr.
Chas. T. Reveley
Mrs. J. E. Cooper
Roy Wise
E. E. Franke

Little Rock District**Charge**

Austin Circuit
Bauxite-Sardis
Bryant Circuit
Carlisle
Carlisle Circuit
Des Arc—N. Bethel
DeValls Blf-Chenault
Douglassville-G. Spgs.
England
Hazen
Hickory Plains Circuit
Keo-Tom.-Humnoke
Little Rock Churches:
Asbury
Capitol View
First Church
Forest Park
Henderson
Highland
Hunter
Oak Forest
Pulaski Heights
St. Marks
Scott Street
Twenty-Eighth St.
Winfield
Lonoke
Mabelvale
Primrose
Roland

Principal

*F. H. Martineau
A. C. Miller
Hubert Couch
C. C. Rowland
*L. N. Skipper
J. Nelson Crum
Mrs. Guy Chennault
Mrs. Paul Mayer
*George Biernes
R. H. Hammond
Charles Hayes
W. N. Morris
Oliver Harper
*Joe Thompson
*E. R. Morehart
*Clyde McAlister
*J. D. Boen
James H. Johnson
*E. E. Harrison
*Herbert Smith
Mrs. Lee Crowe
W. R. Smith
*Mrs. Pierce Osborne
*J. S. M. Cannon
*H. E. Maxwell
Charlie Meyer
R. L. James

Reserve

W. S. Sheets
Mrs. A. C. Miller
Mrs. L. L. Bowie
Mrs. L. L. Buffalo
Charles Parker
C. J. Rister
Mrs. W. F. Cleveland
Mrs. Roy Huffstutler
W. S. Cunning
Louis Reid
Emmett Richey
Dr. J. G. Wilson
T. O. Sparks
E. F. McCuiston
Stanley Cick
Mrs. Elizabeth Duke
L. C. Elliott
*L. D. Patton
*Mrs. E. E. Snapp
A. D. May
Estelle Beal
*W. B. Woodsmall
W. S. Perry
Price Shofner
*Mrs. R. A. Lingo
C. W. McDaniel
Ray Vinson

Monticello District**Charge**

Arkansas City
 Crossett
 Dermott
 Drew Ct.
 Dumas
 Eudora
 Fountain Hill Ct.
 Hamburg
 Hermitage Circuit
 Lake Village
 McGehee
 Monticello
 Montrose-Snyder
 New Edinburg Ct.
 Portland-Parkdale
 Tillar-Winchester
 Warren
 Watson-Kelso
 Wilmar Ct.
 Wilmot-Miller's Ct.

Principal

Leslie Johnston
 G. W. Utter
 R. D. Harrison
 *Arthur White
 *W. I. Fish
 *Clyde Derrick
 Curtis Evans
 *Fred Blanks
 *J. P. Johnson
 Herran Peacock
 *Fay Joyner
 V. J. Trotter, Jr.
 *B. B. Horton
 Mrs. E. T. Atwood
 Mrs. H. M. Machen
 *T. A. Prewitt
 *Carl Hollis
 *Mrs. J. C. Stroud
 *J. C. Nichols
 *R. C. Wells

Reserve

*Mrs. Doris Williams
 Mrs. G. W. Utter
 *Mrs. J. C. Hoffman
 *Virgil White
 Merle Peterson
 *Mrs. Clyde Derrick
 *Mrs. Geo. Hamcock
 *L. T. Barnes
 T. F. Craig
 M. H. Russell
 Dick Pearson
 Fay Brann
 *Mrs. W. T. Bone
 Jack Davis
 *Mrs. Clem Baker
 J. P. Herrington, Jr.
 J. E. Stewart
 Mrs. W. H. Loyd
 Albert Groce
 M. D. Hughes

Pine Bluff District**Charge**

Almyra
 Altheimer-Wabbaseka
 Bayou Meto Ct.
 De Witt
 Gillett
 Good Faith
 Grady-Gould
 Humphrey
 Little Prairie Ct.
 Pine Bluff Churches:
 Carr Memorial
 First
 Hawley Memorial
 Lakeside
 Pine Bluff Ct.
 Rison
 Roe Ct.
 Rowell Ct.
 Sheridan-New Hope
 Sheridan Ct.
 Sherrill-Tucker
 St. Charles Ct.
 Star City Ct.
 Stuttgart-First
 Stuttgart-Grand Ave.
 Swan Lake
 Whitehall-Redfield

Principal

Harry Neukam
 George Clement
 E. B. Frownfelter
 *J. W. Shackelford
 J. G. Place
 *Mrs. L. T. Rogers
 *J. D. Hawley
 *W. W. Crum
 *Sibley Jones
 Fred Moore
 *W. W. Taylor
 *R. C. Patton
 *Leslie Helvie
 Homer Koonce
 *Geo. H. Holmes
 *Reece Keller
 *Ira Wilson
 A. A. Ledbetter
 E. B. Hixon
 *Mrs. Lee Quattlebaum
 Walter Browning
 *B. S. Hundley
 *Mrs. R. E. John
 *Erick Jensen
 Mrs. Ty Cobb
 H. A. Cooper

Reserve

Albert Kestnor
 R. E. Jeter
 *C. M. Hillman
 *J. D. McGuire
 *Mrs. Frank Mull
 N. H. Wilson
 W. C. Shepherd
 *R. E. Newton
 *Earl Fox
 R. C. Cutrell
 Carl Welch
 Mrs. V. O. Owen
 W. A. Baker
 Lon Hamilton
 Guy Sadler
 Holliday Cattlett
 W. J. Thomasson
 O. F. Martin
 Homer Dortch
 Mrs. L. A. Pack
 John Boyd
 *C. W. Ferguson
 Ralph Wilson
 Fred Hoskyns
 J. F. Wahl
 Mrs. Jim Brown

Prescott District**Charge**

Amity Ct.
 Antoine Ct.
 Bingen Ct.
 Blevins Ct.
 Centerpoint Ct.
 Dierks Ct.
 Emmett Ct.
 Forester Ct.

Principal

Dr. J. P. Bremer
 Mary Alice Stover
 *Mrs. J. M. Jackson
 *Dr. J. E. Gentry
 H. T. Smith
 Mrs. H. L. Simpson
 *Frank G. Haltom, Jr.
 *W. A. McKeown

Reserve

Jim Pate
 Mrs. E. F. Carroll
 W. E. Flaherty
 J. J. Bruce
 Irene Graves
 Claude Graves
 A. E. Magness
 W. B. Sage

Glenwood Ct.
Gurdon
Hope
Mt. Ida
Mineral Springs
Murfreesboro-Delight
Nashville
Okolona
Prescott
Prescott Ct.
Springhill Ct.
Washington Ct.

*W. H. Watson
*Earl Frizzell
*R. T. White
*C. H. Herndon
Mrs. Albert Corbell
H. V. Tull
*T. A. Hutchinson
*Luther Osburn
*John Eagle
*Chas. Grimes
Bracy Smith
O. T. Beck

J. A. Andes
*Louis Cabe
*Syd McMath
A. Standridge
*George Schaal
*W. E. Ligon
Mrs. J. L. Hill
Paul Dickerson
*Martin Guthrie
Mrs. Sid Ward
T. L. Brint
W. B. Nelson

Texarkana District

Charge

Ashdown
Buckner Circuit
Cherry Hill Ct.
DeQueen
Doddridge Ct.
Foreman
Fouke Ct.
Hatfield Ct.
Horatio Ct.
Lewisville-Bradley
Lockesburg Ct.
Mena
Richmond Ct.
Sardis-Shiloh
Shady Grove
Stamps
Taylor Ct.
Texarkana:
College Hill
Fairview
First Church

Texarkana Ct.
Wilton Ct.
Winthrop Ct.

Principal

*Herbert L. Evans
J. H. Nabors
Odis Philpot
*J. T. Manning
Victor Bigby
*Fred Gantt
W. B. Branch
Harry Pryor
E. W. Boatman
*C. W. Jackson
Mrs. W. C. Grady
*K. H. Skinner
Claude Cobb
W. E. Reynolds
*C. F. Ferguson
*W. R. Boney
L. A. King

A. D. Sullivan
L. J. Thompson
*Dr. T. E. Fuller

R. R. Woolard
*J. L. Messamore
Mrs. R. S. Sharp

Reserve

C. L. Briant
J. B. Aldridge
Miss Georgia Barber
George B. Stiers
E. E. Adcock
W. H. Atkinson
W. B. Bryant
Thomas Davis
Mrs. E. W. Boatman
G. M. Mason
W. C. Grady
L. B. Cartwright
Miss Ila Rea Spears
C. D. May
Hollis Simpson
W. E. Perkins
Guyton Kieth

Jewel Evers
Mrs. Fred Arnold
C. L. Cabe or
H. R. Moore, Jr.
*Wheeler Deyer
Bates Furlow
Mrs. Ida Pendergast

(Asterisk (*) denotes present).

PROCEEDINGS

WEDNESDAY MORNING, 10 O'CLOCK

Conference Opened—The ninety-third session of the Little Rock Conference of the Methodist Church (which was the eighth session of the United Church) was called to order at the First Methodist Church, Hot Springs, Ark., at 10 o'clock, Wednesday morning, October 30. Bishop Paul E. Martin called the Conference to order and Hymn No. 402, "Are We Yet Alive" was sung. Rev. A. C. Carraway, a returned Chaplain, now pastor of Capitol View Methodist Church in Little Rock, led in prayer. Rev. Fred R. Harrison, Secretary of the last session, called the roll. Rev. Harrison asked the congregation to sign slips which were passed to them in order that an accurate check of the roll could be made and to save time. He appointed Bryan Stephens, Joe Hunter, George Meyer, Herman Ginther, M. W. Miller, and Claude Roy to assist in taking the roll.

Rev. Fred R. Harrison was elected secretary and asked the Conference to elect the following assistants: C. E. Whitten, statistical secretary, with Lewis Averitt and A. W. Hamilton as his assistants, R. B. Moore, Journal Clerk, with Fred W. Schwendimann assistant, S. T. Baugh, Journal Editor.

Bishop Martin introduced Bishop Fred P. Corson of the Philadelphia Area and announced that Bishop Corson would be the Conference preacher.

Rev. W. B. Slack, Conference host, was presented and announced the bar of the Conference and moved that the printed program which was distributed through the congregation, become the order of business of the Conference.

Bishop Martin spoke briefly of the outstanding year's work in the Methodist Church in receiving the largest number of new members received by any Church in a single year in history.

Board and Committee Nominations—Rev. J. E. Cooper, Secretary of the Cabinet, read the nominations and corrections submitted by the Cabinet for Committees, Commissions, and Boards. These were adopted.

Chaplains and Visitors—The following former Chaplains returning to the Conference, were presented: James Sewell, Richard Perry, Roland Darrow, Mark Vaught, Mouzon Mann, R. O. Beck, and Ralph Clayton. Also the following visitors: Rev. E. H. Hooks, District Superintendent of the Fayetteville District of the North Arkansas Conference, Dr. E. T. Wayland, Editor of the Arkansas Methodist, and Chaplain James R. Thompson of the Army and Navy Hospital, Hot Springs.

District Superintendent's characters passed—The names of all District Superintendents were called and their characters passed.

District superintendent's reports—Each district superintendent presented a report of the year's work for his district as follows: Arkadelphia, J. E. Cooper; Camden, Arthur Terry; Little Rock, E. C. Rule; Monticello, T. T. McNeal; Pine Bluff, Fred R. Harrison; Prescott, Van W. Harrell; Texarkana, A. J. Christie.

Gift presented to J. E. Cooper—The preachers of the Arkadelphia District, represented by Rev. Curtis Williams, presented to Bro. Cooper an electrically lighted World Globe. Bro. and Mrs. Cooper were presented to the Conference and expressions of love and affection were made concerning the splendid leadership and lovable spirit of the retiring district superintendent.

Chaplain John William Hammons—Rev. E. C. Rule, District Superintendent of the Little Rock District, read a report of the work of

Chaplain John William Hammons, Lt. Commander in the United States Navy.

Announcements—The time and place were announced for the meetings of the various Boards and Committees for the afternoon.

Members Excused—Rev. W. E. West and Rev. M. E. Scott were excused to conduct a funeral.

Service of Commemoration—Bishop Martin announced that the hour had arrived for service of Commemoration. The service was conducted by Bishop Martin, assisted by Rev. John L. Hoover, Rev. W. B. Slack, Rev. Kenneth L. Spore, with Rev. Fred R. Harrison reading the names of those memorialized. Bishop Fred P. Corson delivered the commemoration message. After the singing of the Doxology the Sacrament of the Lord's Supper was administered by Bishops Martin and Corson, assisted by the district Superintendents and the host pastor. The benediction was pronounced by Bishop Martin.

THURSDAY MORNING, 8:30 O'CLOCK

Conference opened—Bishop Paul E. Martin called the conference to order at 8:30 o'clock. The Worship Service "A Service of Dedication to the Cause of Rural Life" by Edward Krusen Ziegler, was conducted by Bishop Martin. The Crusade quartet, composed of John McCormack, Curtis Williams, Alfred Doss and Fred Schwendimann sang, with Miss Virginia Guffey as accompanist. After which Bishop Martin brought a meditation on the Rural Church and closed with the Hymn "Where Winds The Road."

Committee on Minutes—Rev. John Hefley, Rev. C. R. Hozendorf, Rev. Alfred Doss, were appointed by the conference as a committee to read and approve the minutes of the sessions.

Replacements on Committees—Rev. J. E. Cooper, secretary of the Cabinet, read corrections and replacements on committees made by the Cabinet. The Conference accepted the nominations.

Greetings—Greetings were brought to the Conference by Rev. Arthur Terry from Rev. J. A. Wade, who was unable to attend Conference because of sickness. The Conference ordered the secretary to send a telegram of love and affection to Bro. Wade; Rev. A. J. Christie brought greetings from Rev. W. W. Fincher, who is ill and a message was ordered by the Conference to be sent to Bro. Fincher; Rev. Van W. Harrell announced that Rev. Joe H. Robinson took sick during the night and is now in the Methodist Hospital receiving treatment. Telegrams expressing greetings to the Conference were read from Dr. Paul D. Womeldorf, Executive Secretary of the South Central Jurisdiction, Dr. J. M. Workman, Conway, Ark., and Dr. Van Cura, of Checkoslovakia.

Methodist Publishing House—Mr. Robert S. Tate representing the Methodist Publishing House presented a check to the Conference Claimants Board and spoke concerning the book display in the basement. Bishop Martin urged the ministers to visit the bookroom and purchase and read the books.

Board of Evangelism—Rev. Kenneth L. Spore, chairman of the Board of Evangelism was recognized. He presented Rev. J. L. Tucker, secretary, who read Report No. 1 of the Board of Evangelism. Rev. John McCormack, Executive Secretary of the Board, brought an interesting report of his work for the year. After a further statement by Bro. Spore, the report was adopted. After which Bro. Spore asked for the privilege of filing Report No. 2 of the Board of Evangelism without bringing it before the Conference. The Conference concurred.

Board of Education, Report No. 1—Dr. Aubrey Walton, chairman of the Board of Education, was recognized. He presented Rev. R. B. Moore, secretary, who read Report No. 1 of the Board of Education. Rev. Roy E. Fawcett, Executive Secretary of the Board, spoke to the report, and gave an excellent statement of the work of the Board during

the year just past. He stated that the reports indicate 5000 increase in Church School enrollment which is more than 10%. Mrs. W. F. Bates, Director of Children's Work, spoke briefly of her work. Dr. Boyd McKeown, representative of the General Board of Education, spoke to the report, commending the Conference on the splendid work being done by and for Hendrix College and Philander Smith College, the Wesley Foundation Work, and also stressed the importance of Student Recognition Day.

Report No. 2, Board of Education—Rev. R. B. Moore brought Report No. 2 of the Board of Education, which was related to Hendrix College, the \$1,000,000 campaign and the election of trustees for the Hendrix College Board.

Dr. Matt L. Ellis, president of Hendrix College, made an interesting speech on the conditions prevailing at the college and the fine spirit of all working in and with the institution. He presented Glen Pinnell, son of Rev. and Mrs. Hal Pinnell, our pastor at De Witt, who sang. He was accompanied by Glendale Watkins of Kensett, both are students in the Department of Music at Hendrix College.

Dr. C. M. Reves, chairman of the \$1,000,000 campaign, conducted a "testimonial service" relating to Hendrix College, beginning with Bishop Paul E. Martin, followed by each of the district superintendents. Rev. J. M. Hamilton, pastor at Benton, presented Dr. Matt L. Ellis a check in the amount of \$8,300 which was raised by his Church and which exceeded their quota for the campaign. Dr. E. C. Rule presented Mr. J. T. Thompson, director of the campaign for the Little Rock District, who made an inspiring speech revealing the fine attitude of our splendid laymen. Rev. H. M. Lewis, Superintendent of the Conway District, North Arkansas Conference, was introduced and spoke of the work in his district. Mr. Percy Goynes, a layman from Conway, reported that the Chamber of Commerce of the city of Conway, accepted the responsibility for raising \$50,000 for the college.

Conference Claimants—Rev. S. T. Baugh, chairman of the Board of Conference Claimants was presented. He called upon Mr. Alton B. Raney, secretary, to read Report No. 1 of the Board, after which Mr. J. D. Reynolds of Camden spoke briefly in favor of the report. It was adopted.

A resolution which was presented by Rev. S. T. Baugh, concerning the campaign for our Conference Claimants was held over to a later time, after Rev. J. L. Hoover, chairman of the Board of World Service and Finance, reminded the Conference a resolution should clear before his Board.

Visitors—The following visitors were introduced to the Conference by Rev. Mark Vaught, chairman of the Courtesies Committee. Rev. Virgil Morris, superintendent of the Baton Rouge District of the Louisiana Conference, Rev. H. M. Lewis, Conway District Superintendent, North Arkansas Conference, Rev. Charles W. Richards, whom the Bishop announced as transferred into this conference from the Tennessee Conference, Rev. Ira Brumley, Executive Secretary of the Board of Education of the North Arkansas Conference, Rev. Garland C. Taylor, pastor at Morrilton, Rev. Olin Cole, pastor at Beebe, Rev. Forest Dudley, member of the Texas Conference, Rev. Ewing Wayland, associate editor of the Arkansas Methodist, Rev. Fred Roebuck, pastor of First Church, Fort Smith, and Dr. Van Vura of Czechoslovakia. Also, two laymen were introduced, Mr. Percy Goynes of Conway and Mr. E. W. Martin, Business Manager of Hendrix College.

Board of Lay Activities—Bishop Martin introduced Mr. T. W. McCoy the Conference Lay Leader who spoke on the work of the Board of Lay Activities during the past year, and read the report of the Board of Lay Activities. It was adopted.

Bishop Fred P. Corson was presented and spoke on the subject "Christian Stewardship."

Announcements—Announcements concerning further meetings of Boards and Committees were made. Messages of greetings to the Conference were read from Rev. J. A. Wade and Chaplain William L. Arnold.

Campsite Committee—Rev. Kenneth L. Spore brought a report of the Campsite Committee stating the progress of that committee in securing an adequate and acceptable Campsite for the Conference. The report was adopted, after which the Doxology was sung.

The benediction was pronounced by Rev. Virgil Morris, Superintendent of the Baton Rouge District, Louisiana Conference.

THURSDAY AFTERNOON, 2:00 O'CLOCK

Conference opened—Conference session was opened at 2 o'clock with Bishop Paul E. Martin presiding after Hymn No. 256, "Faith of Our Fathers" was sung, Rev. Garland C. Taylor, pastor at Morrilton, led in prayer.

Board of Temperance—Rev. W. D. Golden, secretary of the Board of Temperance, brought the report of that Board which was adopted. An offering was taken for the Arkansas Anti-Saloon League in the amount of \$54.62.

Changes in the Conference Standing Rules—Rev. S. T. Baugh presented to the Conference certain proposed changes in the Conference standing rules. The recommendations were laid on the table for 24 hours as is required by the standing rule.

Commission of Christian Literature—Rev. B. F. Fitzhugh, secretary, brought the report for the Commission on Christian Literature which was adopted.

Arkansas Methodist—Mr. J. S. M. Cannon offered a resolution concerning the Arkansas Methodist. The resolution was adopted.

Mr. J. S. M. Cannon submitted the report of the Joint Commission of the Arkansas Methodist.

Dr. E. T. Wayland, Editor of the Arkansas Methodist, spoke to the report. Rev. Ewing T. Wayland, Associate Editor of the Arkansas Methodist, was introduced and spoke of his work. The report was adopted.

Commission on Ministerial Sustentation—Rev. Rufus Sorrells, secretary, brought the report of the Commission on Ministerial Sustentation. Rev. R. H. Cannon, chairman called attention to the report with particular emphasis upon the fact that the Commission had raised the minimum salary from \$1,000 to \$1200.00.

Bible Board—Rev. C. D. Meux presented the report of the Bible Board to which report the Bishop spoke briefly. The report was adopted.

Western Methodist Assembly—Rev. E. H. Hook, superintendent of the Fayetteville District and a member of the Board of Trustees of the Western Methodist Assembly at Mt. Sequoyah was introduced to the Conference. Bro. Hook stated that he was asked to speak on the work at Mt. Sequoyah in the place of superintendent Sam Yancey who was unable to be present.

Board of Church Extension—Rev. D. T. Rowe, chairman of the Board of Church Extension stated that since the former chairman, Rev. Frank Roebuck has passed away, and the secretary, Rev. J. A. Wade, was not able to attend the Conference because of sickness, it was necessary that all applications for aid from the Board be held for a time until the new Board could meet immediately after the Conference session.

Superintendent of the Arkansas Anti-Saloon League—Mr. C. C. Coulter, superintendent of the Arkansas Anti-Saloon League, was presented and spoke to the Conference concerning the work of the Anti-Saloon League in Arkansas.

Announcements—Announcements of further services of the day and Board, Commission, and Committee Meetings were made.

Adjournment—The session was adjourned by the benediction pronounced by Rev. Dan Robinson.

FRIDAY MORNING, 8:30 O'CLOCK

Conference opened—The Conference was called to order at 8:30 o'clock with Bishop Paul E. Martin presiding. Hymn No. 12, "Joyful, Joyful, We Adore Thee" was sung. Rev. Richard Perry, a returned Chaplain, led in prayer. The Crusade Quartet sang two groups of Spirituals.

Bishop Martin brought a meditation upon the profound messages of folk songs and the value of great hymns.

Memorial Flowers—A beautiful basket of Chrysanthemums were placed upon the altar by Mrs. Ed Graves and Mrs. Willella Baughman of Arkadelphia, in honor of their father, Rev. W. M. Crowson, a former member of this Conference.

Minutes. Approved—The minutes of the preceeding session were reported to have been read and found to be correct. Committee, C. R. Hozendorf, John B. Hefley, and Alfred Doss.

Board of Conference Claimants—Rev. Otto W. Teague was recognized and brought Report No. 2 of the Board of Conference Claimants and spoke to the report. It was adopted.

Dr. B. L. Schubel—Dr. B. L. Schubel, associate secretary of the Board of Pensions, and representative of the Board of Secretaries, was introduced and spoke of the work of the Board of Pensions.

Committee on Conference Relations—Report No. 1 of the Committee on Conference Relations and Ministerial Qualifications was brought before the Conference.

Rev. Edward Harris, chairman of the Board of Ministerial Training, spoke of the careful work and deep interest of the Board in each person appearing before that board, commending the excellent work of Rev. Charles Giessen and Rev. John B. Hefley. The Conference joined heartily in this commendation.

Admission on Trial—The names of the members of the class for admission on trial were called, reported upon, introduced, and were admitted.

Undergraduate Classes—The names of the Undergraduates were called and reported upon and advanced.

Admission into Full Connection—The class for admission into full connection was received. Each member of the class was presented a leather bound copy of the discipline and the Book of Worship by Mr. T. W. McCoy, Conference Lay Leader.

Accepted Supplies—Rev. Ralph Clayton, secretary of the Committee on Accepted Supplies, brought the report of that Committee. It was adopted.

A Motion—Dr. Clem Baker made a motion which was seconded by S. T. Baugh, that payments to Rev. O. C. Robison, by the Board of Conference Claimants be continued. The motion was passed.

Ministers Character passed—Names of all members of the Conference were called and their characters passed.

Transferred Out—Bishop Martin announced that Rev. William J. Reid had been transferred to the Louisiana Conference.

Ministers Retired—The following members of the conference were retired: Rev. L. E. N. Hundley, Rev. J. D. Baker, Rev. W. W. Fincher.

Honorable Location—Rev. Alton J. Shirey and Rev. Bob L. Poole were granted honorable locations by the Conference.

Supernumerary—Rev. Harold D. Sadler was granted a supernumerary relation.

Recess—Conference recessed for 15 minutes.

Conference Re-Opened—Hymn No. 238, "Blessed Assurance" was sung.

Rev. C. C. Neal—Rev. C. C. Neal, president of Haygood College, of the C.M.E. Church, at Pine Bluff, was introduced and addressed the Conference.

Episcopal Residence—Dr. E. C. Rule brought a report on the Episcopal Residence which was filed with the minutes.

Resolution—Rev. K. L. Spore brought a resolution concerning the State Hospital for Nervous Diseases and the enlistment of the interest of members of the Conference in a better understanding of and participation in efforts to minister to our mentally sick. The resolution was adopted.

Committee on Courtesies—Rev. Mark Vaught introduced the following visitors: Rev. and Mrs. Cecil B. Culver of the Fort Smith District, Rev. and Mrs. Earl Cravens our pastor at Russellville, and Rev. G. P. Comer, general Evangelist.

Gift to Hendrix College—Mr. T. W. McCoy announced that the Board of Lay Activities had given a bond of \$1,000 to Hendrix College. Dr. Matt Ellis, president of the College, thanked the Board for the gift.

Lay Leaders Nominated—Rev. J. E. Cooper, secretary of the Cabinet, nominated the District Lay Leaders and Associate Lay Leaders and the Conference elected them.

Conference Standing Rules—Rev. S. T. Baugh brought the proposed changes in the Conference standing rules, which were presented yesterday and remained on the table according to the Conference rules, explaining the proposed changes. They were adopted by the Conference.

A Motion—Dr. E. C. Rule moved that under the action of the last conference authorizing the district superintendents to make such adjustments in World Service and Conference Benevolence Quotas to the districts as would enable each district to pay in full, that the Conference Statistician be authorized to use such adjusted quotas in his records. The motion was seconded and passed.

Commission on World Service and Finance—Rev. R. A. Teeter brought the report of the Commission on World Service and Finance. With the addition of the amendment as printed in the Journal of 1945 as a part of the new report, it was adopted.

Resolution Withdrawn—Rev. S. T. Baugh withdrew the resolution presented by the Board of Conference Claimants, Thursday morning. The resolution had been held for further study.

Board of Hospitals and Homes—Rev. Hal H. Pinnell, secretary, read Report No. 1 for the Board of Hospitals and Homes.

Methodist Children's Home—Mr. J. S. M. Cannon, Superintendent of the Children's Home, brought Report No. 2 of the Board of Hospitals and Homes, and spoke to the report.

Golden Cross—Rev. J. L. Dedman, Director of the Golden Cross, gave a report of that work for the year.

Methodist Hospital—Mr. B. T. Fooks, brought Report No. 3 which was a report of the Methodist Hospital.

Rev. R. E. Simpson was introduced to the Conference as the new Superintendent of the Methodist Hospital. Bro. Simpson spoke briefly pledging himself to give his best efforts to this new responsibility.

Motion of Appreciation—Dr. E. C. Rule moved that the reports of the Board of Homes and Hospitals be adopted and that a vote of thanks be given to Mr. B. T. Fooks for his excellent work in our Hospital program. The motion was seconded and passed.

President of W.S.C.S.—Mrs. E. D. Galloway, Conference President of the Woman's Society of Christian Service, was presented. Mrs. Galloway made an excellent presentation of the work of the Women for the year, and spoke of the plans for the new year. Mr. Galloway present-

ed Miss Ary Schough, a Deaconess who will work this year in the Prescott District and Miss Margaret Marshall, Deaconess of the Little Rock District.

Report No. 3 of the Board of Education—Dr. A. G. Walton, chairman of the Board of Education, presented Report No. 3 of that Board. It was adopted.

Board of Church Extension—Rev. D. T. Rowe announced that the section of the Board of Missions dealing with Church Extension would meet at Hot Springs, Thursday, November 14, at 1:00 o'clock.

Greetings—Rev. James Major made a motion that greetings be sent to the Southwest Conference of the Central Jurisdiction meeting in Muskogee, Okla. The motion was seconded and passed.

Announcements—Rev. Curtis Williams announced the ministers and churches in which they would preach Sunday morning as follows:

Methodist: First, Bishop Paul E. Martin; Grand Avenue, Rev. H. O. Bolin; Pullman Heights, Rev. Hal Pinnell; Oaklawn, Rev. Otto Teague.

Baptist: Central, Bishop Fred P. Corson.

Christian: First, Rev. D. Douzon Mann.

Presbyterian: First, Rev. Edward Harris; Orange St., Rev. A. C. Carraway.

Church of God: First, Robert Beasley.

The further services of the day were announced.

Adjourned—After the singing of the Doxology, Rev. S. K. Burnett pronounced the benediction.

FRIDAY NIGHT, NOVEMBER 1

Ordinations—The ordination service for Deacons and Elders orders was conducted Friday evening, November 1st, Bishop Paul E. Martin presiding. Hymns No. 20 and 279 were sung, after which Dr. W. B. Slack, pastor of First Methodist Church, Hot Springs, let in prayer.

Bishop Fred P. Corson delivered the address: "Take Thou Authority."

Those ordained Deacons were: W. B. Savage, Joe B. Roe, Kirvin A. Hale, Herston R. Holland, R. M. Crain, Dewey McCauley, and J. Edwin Keith.

Those ordained Elders were: Robert McCammon, Orrie L. Thompson, Joe H. Robinson, and P. D. Alston.

SATURDAY MORNING, 8:30 O'CLOCK

Conference Opened—After singing Hymn No. 302, "Sweet Hour of Prayer," Rev. J. Ralph Sewell led in prayer.

Committee on Minutes—Rev. John B. Hefley reported that the Minutes of the preceeding session had been read and found to be correct.

A motion was passed giving authority to the Committee on Minutes to read and approve minutes of the further sessions without reporting to Conference.

Retired Ministers Characters passed—The names of the retired ministers were called and their characters were passed. Those who were retiring at this time, were extended the privilege of the floor. Rev. J. D. Baker spoke gracious words of parting and of his joy in service. Rev. L. E. N. Hundley and Rev. W. W. Fincher were unable to attend the Conference.

Philander Smith College—President M. L. Harris of Philander Smith College at Little Rock, was introduced to the Conference. President Harris brought a group of singers from the College who sang two numbers at this time, after which President Harris addressed the Conference.

Bishop Martin asked that individuals of the Conference give scholarships to Philander Smith College in the amount of \$150 each. Within a few minutes, twenty-one scholarships were given, and a cash offering

of \$218.82 was received for this cause. The Philander Smith Singers sang three additional numbers. President Harris thanked the Conference for their kindness and generosity.

The following individuals and Churches pledged \$150 each to Philander Smith: Rev. J. M. Hamilton, Rev. R. E. Darrow, Mr. T. W. McCoy, Dr. A. G. Walton, Rev. H. O. Bolin, Rev. J. B. Hefley, Rev. J. L. Dedman, Dr. Connor Morehead, Mr. O. A. Graves, Mrs. R. M. Briant, Rev. Hal H. Pinnell, Mr. William Owen, Magnolia, Rev. B. F. Fitzhugh, Rev. K. L. Spore, Dr. W. B. Slack, Rev. C. H. Gilliam, First Methodist Church, Smackover, Dr. W. E. Brown, Rev. James Majors, Rev. J. Ralph Sewell, Dr. Clem Baker, also, Mr. N. F. Sewell pledged \$25.

Special Appointments—Bishop Martin asked the Conference to give him authority to appoint David A. Weems Secretary of the Service Men's Council, New York, N. Y., also Wallace M. Calloway to a government hospital as a patient. Granted.

Conference Trustees—Rev. R. H. Cannon presented the report of the Conference Trustees. Dr. E. C. Rule made a motion, seconded by R. H. Cannon, that the funds derived from the sale of abandoned church property be held by the Conference Trustees to be used in accordance with the disciplinary request and for use within the district in which the property is located, and for use within the community, if to the best interests of the Church in the district. The motion was incorporated in the report. The report was adopted.

Conference Treasurer's Report—Mr. C. E. Hayes, Conference Treasurer, read for the information and inspiration of the Conference the report of the Treasurer revealing considerable progress.

Town and Country Commission—Rev. J. A. Newell presented the report of the Town and Country Commission which was adopted.

Certificates of Honor to District Superintendents—In recognition of the fact that the Conference and the Charges of the Conference had paid the full askings on World Service, Bishop Martin awarded certificates of honor to the district superintendents.

District Conference Journal—Rev. Curtis Williams presented the report of the Committee on Conference Journal. The report was adopted.

Next Session of Annual Conference—Question No. 47 in the business of the Annual Conference, where shall the next session of the Conference be held? By unanimous consent the question was answered First Methodist Church, Hot Springs, Ark.

Committee on Courtesies—Rev. H. H. Griffin, superintendent of the Searcy District and Mrs. Griffin were introduced to the Conference.

Greetings—Messages of greetings were received from Rev. J. B. Sims a retired member, and from Dean E. B. Hawk of the Perkins School of Theology, Southern Methodist University. The Conference ordered the secretary to return the greetings.

Conference Recesses.

Hymn No. 315, "How Firm a Foundation" was sung.

Committee on Courtesies—Rev. J. M. Hamilton introduced to the Conference former governor Homer M. Adkins and Mrs. Adkins and Rev. Grant from Oklahoma.

Bishop Martin presented Mr. C. L. Cabe of Texarkana, stating that Mr. Cabe had not missed a meeting of the annual Conference in forty years. It was also stated that Mr. D. B. Niven of Pine Bluff, J. M. Shackelford, De Witt, and several of the retired ministers were presented, some of whom have been in every session for more than 50 years.

Board of Missions and Church Extensions—Rev. Ed Dunlap brought the report No. 1 of the Board of Missions and Church Extensions. Rev. R. H. Cannon spoke to the report. It was adopted.

Statistical Report—Rev. C. E. Whitten, Statistical Secretary, brought a statistical report for the year. It was adopted.

Introduction—Rev. W. B. Slack presented Dr. James W. Workman, formerly with the General Board of Lay Activities, and now pastor of First Methodist Church, North Little Rock. Mrs. Workman was also introduced.

Excused—Rev. Otto Teague was excused to conduct a funeral.

Church Extension—Rev. D. T. Rowe, Chairman of the section of Church Extension of the Board of Missions and Church Extension, announced that that Board would meet at Arkadelphia, Nov. 11, at 10 o'clock, and would file with the secretary their report as soon as their work was concluded. This announcement superceeds the former announcement of the place and meeting of that Board.

American Bible Society—Dr. Frank W. Langham of the American Bible Society was introduced and addressed the Conference on the work of the American Bible Society.

The Christian Advocate—Dr. Otto Noll, managing editor of the Christian Advocate, was introduced and addressed the Conference. Rev. W. T. Bone, Rev. D. Mouzon Mann, Dr. Connor Morehead were presented for special commendation for their work in securing subscriptions to the Christian Advocate.

Announcements—Dr. Slack announced a luncheon for Ministers wives and the open house at the Methodist Hospital, and other services for the day and for Sunday. Mrs. W. C. Watson, wife of the late Dr. W. C. Watson, urged the young preachers of the Conference to accept books remaining in the library of Dr. Watson. Rev. George Cagle was excused to conduct a funeral.

Adjournment—After the singing of the Doxology, the benediction was pronounced by Dr. James W. Workman.

SUNDAY AFTERNOON, 2:00 O'CLOCK

Conference Opened—Bishop Paul E. Martin called the Conference to order by singing Hymn No. 226, "O Jesus I Have Promised." Rev. T. T. McNeal led in prayer.

Bishop Martin presented Bishop Fred P. Corson of the Philadelphia Area and asked him to preside during the session.

Credentials Surrendered—Rev. A. J. Christie was recognized and stated that Rev. J. Frank Walker, because of disability, requested the Conference to accept the surrender of his credentials. The Conference granted the request.

Announcements—After announcements relative to the closing of the session, Bishop Corson made a most gracious statement of his gratitude for the kindnesses received during this Conference, and of his joy in being of service during these days. He returned the chair to Bishop Martin.

Committee on Resolutions—Rev. C. D. Cade brought the report of the Committee on Resolutions. It was adopted.

Appointments—Bishop Martin spoke of the deep feeling and understanding with which he and his cabinet studied and made the appointments for the new year. The appointments were read. Hymn No. 287, "A Charge To Keep I Have" was sung, after which the benediction was pronounced by Bishop Corson.

BUSINESS OF THE ANNUAL CONFERENCE

The Minutes of the Little Rock Annual Conference of The Methodist Church, held in Hot Springs, Arkansas from October 30, to November 3, 1946, Bishop Paul E. Martin, Presiding.

Part I. Organization and General Business

1. Who are elected: Secretary, Fred R. Harrison, 120 Harding, Pine Bluff, Arkansas; Treasurer: C. E. Hayes, 417 Donaghey Bldg., Little Rock, Arkansas; Statistician: C. E. Whitten, De Witt, Arkansas.
2. Is the Annual Conference incorporated? No.
3. (a) What officers handling funds of the conference have been bonded and in what amounts? World Service and Finance, C. E. Hayes, \$10,000.00; Education, J. S. M. Cannon, \$5000.00; Lay Activities, J. S. M. Cannon, \$1,000.00; Methodist Children's Home, Inc., J. S. M. Cannon, \$3,000.00; Conference Claimants, Otto W. Teague, \$7,500.00; Missions and Church Extension, Carl Hollis, \$5,000.00; Evangelism, John L. Tucker, \$500.00; Hospitals and Homes, L. C. Elliott, \$500.00. (b) Have the books of said officers or persons been audited? Yes.
4. Have the boards, commissions, or committees been appointed or elected: (a) Board of Ministerial Training? Yes. (b) Committee on Conference Relations and Ministerial Qualifications? Yes. (c) Committee on Accepted Supply Pastors? Yes. (d) Committee of Investigation? Yes. (e) District Boards of Location and Building? Yes. (f) Board of Trustees of the Annual Conference? Yes. (g) Annual Conference Commission on World Service and Finance? Yes. (h) Town and Country Commission? Yes. (i) Annual Conference Deaconess Board? No. (j) Annual Conference Board of Missions and Church Extension? Yes. (k) Annual Conference Board of Education? Yes. (l) Annual Conference Board of Temperance? Yes. (m) Annual Conference Board of Lay Activities? Yes. (n) Annual Conference Board of Hospitals and Homes? Yes. (o) Annual Conference Board of Evangelism? Yes. (p) Distributing Committee? No. (q) Annual Conference Board of Conference Claimants? Yes. (r) Committee on Proportional Payment of Ministerial Support? No. (s) Other committees, commissions, or boards? Yes.
5. Have the secretaries, treasurers, and statisticians kept their respective records upon and according to the forms prescribed by The Methodist Church? Yes.
6. What are the reports of the district superintendents as to the status of the work within their districts? See statistical tables.
7. What is the schedule for minimum support for pastors? \$1200.00.
8. What is the plan and what are the approved claims for the support of the district superintendents for the ensuing year? The District Stewards approve the salary based on a percentage of the Pastor's.
9. What amount has been apportioned to the pastoral charges within the conference to be raised for the support of conference claimants? The amount is gained through a graduated percentage of Pastor's salaries, beginning with 7% and extending to 14% in the higher salary brackets.
10. What are the apportionments transmitted by the General Commission on World Service and finance to this conference: (a) For World Service? \$42,166.00. (b) For Episcopal Fund? .175% pastor's salary for current year. (c) For General Administration Fund? \$1,386.00.

Introduction—Rev. W. B. Slack presented Dr. James W. Workman, formerly with the General Board of Lay Activities, and now pastor of First Methodist Church, North Little Rock. Mrs. Workman was also introduced.

Excused—Rev. Otto Teague was excused to conduct a funeral.

Church Extension—Rev. D. T. Rowe, Chairman of the section of Church Extension of the Board of Missions and Church Extension, announced that that Board would meet at Arkadelphia, Nov. 11, at 10 o'clock, and would file with the secretary their report as soon as their work was concluded. This announcement supercedes the former announcement of the place and meeting of that Board.

American Bible Society—Dr. Frank W. Langham of the American Bible Society was introduced and addressed the Conference on the work of the American Bible Society.

The Christian Advocate—Dr. Otto Noll, managing editor of the Christian Advocate, was introduced and addressed the Conference. Rev. W. T. Bone, Rev. D. Mouzon Mann, Dr. Connor Morehead were presented for special commendation for their work in securing subscriptions to the Christian Advocate.

Announcements—Dr. Slack announced a luncheon for Ministers wives and the open house at the Methodist Hospital, and other services for the day and for Sunday. Mrs. W. C. Watson, wife of the late Dr. W. C. Watson, urged the young preachers of the Conference to accept books remaining in the library of Dr. Watson. Rev. George Cagle was excused to conduct a funeral.

Adjournment—After the singing of the Doxology, the benediction was pronounced by Dr. James W. Workman.

SUNDAY AFTERNOON, 2:00 O'CLOCK

Conference Opened—Bishop Paul E. Martin called the Conference to order by singing Hymn No. 226, "O Jesus I Have Promised." Rev. T. T. McNeal led in prayer.

Bishop Martin presented Bishop Fred P. Corson of the Philadelphia Area and asked him to preside during the session.

Credentials Surrendered—Rev. A. J. Christie was recognized and stated that Rev. J. Frank Walker, because of disability, requested the Conference to accept the surrender of his credentials. The Conference granted the request.

Announcements—After announcements relative to the closing of the session, Bishop Corson made a most gracious statement of his gratitude for the kindnesses received during this Conference, and of his joy in being of service during these days. He returned the chair to Bishop Martin.

Committee on Resolutions—Rev. C. D. Cade brought the report of the Committee on Resolutions. It was adopted.

Appointments—Bishop Martin spoke of the deep feeling and understanding with which he and his cabinet studied and made the appointments for the new year. The appointments were read. Hymn No. 287, "A Charge To Keep I Have" was sung, after which the benediction was pronounced by Bishop Corson.

BUSINESS OF THE ANNUAL CONFERENCE

The Minutes of the Little Rock Annual Conference of The Methodist Church, held in Hot Springs, Arkansas from October 30, to November 3, 1946, Bishop Paul E. Martin, Presiding.

Part I. Organization and General Business

1. Who are elected: Secretary, Fred R. Harrison, 120 Harding, Pine Bluff, Arkansas; Treasurer: C. E. Hayes, 417 Donaghey Bldg., Little Rock, Arkansas; Statistician: C. E. Whitten, De Witt, Arkansas.

2. Is the Annual Conference incorporated? No.

3. (a) What officers handling funds of the conference have been bonded and in what amounts? World Service and Finance, C. E. Hayes, \$10,000.00; Education, J. S. M. Cannon, \$5000.00; Lay Activities, J. S. M. Cannon, \$1,000.00; Methodist Children's Home, Inc., J. S. M. Cannon, \$3,000.00; Conference Claimants, Otto W. Teague, \$7,500.00; Missions and Church Extension, Carl Hollis, \$5,000.00; Evangelism, John L. Tucker, \$500.00; Hospitals and Homes, L. C. Elliott, \$500.00. (b) Have the books of said officers or persons been audited? Yes.

4. Have the boards, commissions, or committees been appointed or elected: (a) Board of Ministerial Training? Yes. (b) Committee on Conference Relations and Ministerial Qualifications? Yes. (c) Committee on Accepted Supply Pastors? Yes. (d) Committee of Investigation? Yes. (e) District Boards of Location and Building? Yes. (f) Board of Trustees of the Annual Conference? Yes. (g) Annual Conference Commission on World Service and Finance? Yes. (h) Town and Country Commission? Yes. (i) Annual Conference Deaconess Board? No. (j) Annual Conference Board of Missions and Church Extension? Yes. (k) Annual Conference Board of Education? Yes. (l) Annual Conference Board of Temperance? Yes. (m) Annual Conference Board of Lay Activities? Yes. (n) Annual Conference Board of Hospitals and Homes? Yes. (o) Annual Conference Board of Evangelism? Yes. (p) Distributing Committee? No. (q) Annual Conference Board of Conference Claimants? Yes. (r) Committee on Proportional Payment of Ministerial Support? No. (s) Other committees, commissions, or boards? Yes.

5. Have the secretaries, treasurers, and statisticians kept their respective records upon and according to the forms prescribed by The Methodist Church? Yes.

6. What are the reports of the district superintendents as to the status of the work within their districts? See statistical tables.

7. What is the schedule for minimum support for pastors? \$1200.00.

8. What is the plan and what are the approved claims for the support of the district superintendents for the ensuing year? The District Stewards approve the salary based on a percentage of the Pastor's.

9. What amount has been apportioned to the pastoral charges within the conference to be raised for the support of conference claimants? The amount is gained through a graduated percentage of Pastor's salaries, beginning with 7% and extending to 14% in the higher salary brackets.

10. What are the apportionments transmitted by the General Commission on World Service and finance to this conference: (a) For World Service? \$42,166.00. (b) For Episcopal Fund? .175% pastor's salary for current year. (c) For General Administration Fund? \$1,386.00.

THE METHODIST CHURCH

11. What amount is apportioned to this conference for the Jurisdictional Administration Fund? \$1,530.00.

12. What are the reports, recommendations, and plans of the boards of conference: (a) What is the report of the Board of Conference Claimants, and what appropriations for conference claimants are reported and approved? See Journal. (b) What is the report of the Conference Board of Missions and Church Extension of disbursements of missionary aid within the conference? See Journal. (c) What is the report of the Commission on World Service and Finance? See Journal. (d) What are the other reports? See Journal.

13. What date is determined for Golden Cross enrollment? May 11, 1947.

14. (a) Who is elected conference lay leader? T. W. McCoy. (b) What is his report? See Journal. (c) Who are elected district lay leaders? See List of Boards.

Part II. Pertaining to Ministerial Relations

15. Who constitute the Conference Committee of Investigation? Kenneth L. Spore, W. Neill Hart, Doyle T. Rowe, John L. Hoover, T. M. Armstrong.

16. Are there formulated complaints against any ministerial member of the conference? No.

17. Who are the accepted supply pastors? Arkadelphia District: Albert Burroughs, J. B. Stanfield, S. B. Bryant, Coy Rogers, J. C. Van Horn, Wesley Reutz, Rayford Diffie, L. Gray Wilson. Camden District: P. D. Alston, J. R. Martin, O. W. Barbaree, H. R. Nabors, W. I. Small. Little Rock District: Wm. Chas. Becksted, Albert Oliver, Wm. Elder, Howard Williams, Forney Harvey, Virgil Bell. Monticello District: A. J. Bearden, O. W. Hoover, Robt. L. Riffin, Harould Scott, Jeff Davis. Pine Bluff District: W. B. Lockhart, Hursel Richert, W. E. West. Prescott District: R. R. Coley, Cagle E. Fair, W. C. Onstead, George Townsend, A. N. Youngblood. Texarkana District: R. M. Crain, C. O. Hall, D. L. McCauley, C. A. Simpson, C. E. Lawrence, E. T. McAfee, Logan Simpson, S. M. Stallard.

18. What accepted supply pastors now under full-time appointment are taking the conference course of study: (a) In the first year? J. C. Van Horn, Howard Williams, Robert L. Riffin. (b) In the second year? A. H. Burroughs, W. E. West. (c) In the third year? R. M. Crain, D. L. McCauley, C. A. Simpson, L. Gray Wilson, Rayford L. Diffie. (d) In the fourth year? J. R. Martin, E. T. McAfee, R. H. Richert.

19. Who are received on trial: (a) In studies of the first year? Alfred DeBlack, David Hankins, Clyde Swift, Osborne White, Donald James McCammon, Everett Vinson. (b) In studies of the third year under the seminary rule? None. (c) Exempt from course of study under the seminary rule? None.

20. Who remain on trial: (a) Continued in studies of the first year? Wallace Calloway, Roland March. (b) Advanced to studies of the second year? Gerald Clyde Dean, O. L. Daniel, Clyde Parsons, Joseph Wiley Hunter, Charles W. Baughman, Francis Christie, James Edward Christie, Wayne Banks, J. Edwin Keith, Bryan Stephens, Richard McSwain. (c) Continued in studies of the second year? None.

21. Who on trial are discontinued? Yonk Hak Park, J. Edwin Wade.

22. Who are admitted into full connection? D. Mouzon Mann, Joe B. Roe, Kirvin A. Hale, Herston R. Holland, Charles Robert McCammon.

LITTLE ROCK CONFERENCE

23. What full members are in studies: (a) Of the third year? Joe B. Roe, W. B. Savage, Kirvin A. Hale, Herston R. Holland. (b) Of the fourth year? K. K. Carithers.

24. What full members have failed to complete the studies: (a) Of the third year? None. (b) Of the fourth year? None.

25. What full members have completed the studies of the fourth year? Orrie L. Thompson.

26. Who have been elected deacons: (a) As local preachers? R. M. Crain, D. L. McCauley. (b) As members on trial in the course of study? Kirvin A. Hale, Herston R. Holland, Joe B. Roe, W. B. Savage. (c) Under the seminary rule? J. Edwin Keith. (d) Under the missionary rule? None.

27. Who have been ordained deacons? Raz M. Crain, Dewey L. McCauley, Kirvin A. Hale, Herston R. Holland, Joseph B. Roe, W. B. Savage, J. Edwin Keith.

28. Who have been elected elders: (a) As local preachers? P. D. Alston. (b) As local deacons who have been received on trial? None. (c) As conference members in the course of study? Joe H. Robinson, Orrie L. Thompson. (d) Under the seminary rule? Charles Robert McCammon. (e) Under the missionary rule? None.

29. Who have been ordained elders? Philip D. Alston, Orrie L. Thompson, Joseph H. Robinson, Charles R. McCammon.

30. Relative to accommodation transfers for ordination and reception: (t) Who are transferred in, and from what conferences, for purposes of ordination only, such ordination to be voted by this conference? None.

31. Who are readmitted: (a) Deacons? None. (b) Elders? None.

32. What preachers, coming from other churches, have had their orders recognized: (a) As local deacons? None. (b) As local elders? None.

33. Who have been received from other churches as traveling preachers: (a) As ordained deacons? None. (b) As ordained elders? None. (c) As members on trial? None. (d) As members in full connection? None.

34. Who have been received by transfer? C. W. Richards, Tennessee Conference, Nov. 2, 1946; J. F. Fulkerson, St. Louis Conference, Nov. 2, 1946.

35. Who have been transferred out? L. M. Starkey, St. Louis Conference, Nov. 2, 1946; Wm. J. Reid, Louisiana Conference, Nov. 2, 1946.

36. Who have had their conference membership terminated: (a) By voluntary location? A. J. Shirey, Bob L. Pool. (b) By involuntary location? None. (c) By withdrawal? J. Frank Walker. (d) By judicial procedure (expelled)? None.

37. What ministerial members have died during the year? J. H. Cummins, H. B. Vaught, B. Frank Roebuck, M. K. Irvin, J. C. Williams.

38. Who are the supernumerary ministers, and for what number of years consecutively has each held this relation? Harold D. Sadler, one year.

39. Who are granted sabbatical leave? None.

40. What ministers have been retired (a) This year? J. D. Baker, W. W. Fincher, L. E. N. Hundley. (b) Previously? H. A. F. Ault, M. O. Barnett, S. K. Burnett, Wm. F. Campbell, F. C. Cannon, Thomas P.

Clark, J. L. Criswell, C. B. Davis, F. P. Doak, J. D. Dunn, S. L. Durham, L. W. Evans, R. E. Farr, E. D. Hanna, J. A. Henderson, W. T. Hopkins, J. L. Leonard, J. W. Nethercutt, T. W. Nunn, J. B. Pickering, R. J. Rail, John T. Rodgers, J. D. Rogers, J. B. Sims, L. R. Sparks, J. W. Thomas, C. M. Thompson, D. L. Wilcox, J. M. Workman.

41. Who are left without appointment to attend school? All the following to Perkins School of Theology: Wayne Banks, First, Texarkana; Charles Baughman, Arkadelphia; Francis Christie; Jas. Edward Christie, First, Texarkana; Gerald C. Dean, Mabelvale; Cagle Fair; Edwin J. Keith, Malvern; Clyde T. Parsons, College Hill; Donald James McCammon, First, Pine Bluff; Everett M. Vinson, Good Faith.

42. What is the number of (a) Pastoral charges? 170; accepted supply pastors? 41; transfers in? 2; transfers out? 2; received from other churches? None; deceased 5. (b) Ministers—(1) On trial (a) As pastors? 4; (b) Under special appointment? 2; (c) Left without appointment to attend school? 10. (2)—In full connection (a) As pastors and district superintendents? 125; (b) Under special appointment? 5; (c) Left without appointment to attend school? None; (d) On sabbatical leave? None. (3) Retired? 32; (4) Supernumerary? 1; (c) Total of all ministers? 179.

43. What other personal notation should be made? None.

Part III. Concluding Business

44. What is the report of the conference treasurer? See Report elsewhere in Journal.

45. What is the report of the conference statistician? See Report elsewhere in Journal.

46. What are the detailed objectives of this conference for the coming year? Given in Board Reports.

47. Where shall the next session of the conference be held? Hot Springs, Arkansas.

48. Is there any other business? Rev. A. J. Christie, Superintendent of the Texarkana District presented the following: "Due to a disability which we hope will not be of a long duration, Rev. J. Frank Walker is surrendering his Ministerial Office in The Methodist Church in keeping with the provision in Paragraph 380 in the 1944 Discipline, and is requesting this Conference to grant his desire." The Conference voted to grant this relationship.

49. What changes have been made in appointments since last Annual Conference session? Little Rock District: Ralph Sewell, returned chaplain, was appointed to Hickory Plains Ct. Monticello District: Ralph Clayton, returned chaplain, was appointed to Lake Village, succeeding Lewis W. Averitt, who became associate Pastor of Winfield Church in Little Rock. Pine Bluff District: Roland E. Darrow, returned chaplain, was appointed to Carr Memorial in Pine Bluff, succeeding Virgil D. Keeley, who was appointed to First Church, Stuttgart to succeed Bob L. Pool, who requested release to enter Church Building promotion work. Texarkana District: Mark Vaught, returned chaplain, was appointed to Mena, to succeed B. Frank Roebuck, deceased.

50. Where are the preachers stationed for the ensuing year? (See list of Appointments)

APPOINTMENTS

ARKADELPHIA DISTRICT

R. B. Moore, District Superintendent (1)

Arkadelphia	J. B. Hefley	(2)
Arkadelphia Circuit	(David Hankins)	(2)
Benton	J. M. Hamilton	(6)
Benton Circuit	To Be Supplied	
Carthage-Tulip	Robert S. Beasley	(1)
Couchwood Circuit	(Albert Burroughs)	(5)
Dalark Circuit	(S. B. Bryant)	(2)
Friendship Circuit	(Rayford L. Diffie)	(2)
Holly Springs Circuit	(W. I. Small)	(1)
Hot Springs Churches:		
First Church	W. B. Slack	(3)
Grand Avenue	S. T. Baugh	(1)
Oaklawn	J. D. Montgomery	(1)
Pullman Heights	Curtis Williams	(3)
Tigert-Fountain Lake	C. H. Gilliam	(1)
Hot Springs Circuit	(Wesley Reutz)	(2)
Leola Circuit	(Coy Rogers)	(1)
Malvern Churches:		
First Church	Dan R. Robinson	(1)
Keith Memorial	(L. Gray Wilson)	(3)
Pearcy Circuit	(W. H. Chambers)	(2)
Princeton Circuit	(H. A. F. Ault)	(1)
Sparkman-Sardis	J. A. Newell	(4)
Traskwood Circuit	J. R. Diffie	(2)
District Missionary Secretary	J. B. Hefley	
Director of Arkansas Methodist	Curtis Williams	
Director of Evangelism	S. T. Baugh	
Professor Emory University	Robert Rhodes	
Students in Perkins School of Theology:	Edwin Keith, Charles Baugh-	
man.		

CAMDEN DISTRICT

Arthur Terry, District Superintendent (2)

Bearden	T. D. Spruce	(2)
Camden Churches:		
Fairview	M. E. Scott	(1)
First Church	J. L. Dedman	(3)
Chidester	George W. Warren	(2)
El Dorado Churches:		
Centennial	(P. D. Alston)	(11)
First Church	Connor Morehead	(2)
Vantrease Memorial	Charles H. Giessen	(4)
Emerson Circuit	To Be Supplied	
Fordyce	George G. Meyer	(3)
Hampton	Joe W. Hunter	(2)
Harmony Grove	(H. R. Nabors)	(3)
Huttig	S. B. Mann	(2)
Junction City	O. L. Daniel	(2)
Kingsland	(Wm. C. Beckstead)	(1)
Louann	(L. R. Sparks)	(2)
Magnolia Churches:		
First Church	John M. McCormack	(1)
Jackson Street	J. A. Wade	(2)

Magnolia Circuit	To Be Supplied	
Marysville	(J. R. Martin)	(2)
Norphlet	A. E. Jacobs	(3)
Parker's Chapel-Fredonia	O. C. Birdwell	(2)
Smackover	W. R. Burks	(4)
Stephens	W. R. Holland	(4)
Strong Circuit	Clyde Swift	(1)
Thornton Circuit	C. C. Vanzant	(1)
Village-Dumas	(Claude O. Hall)	(1)
Waldo	Kirvin A. Hale	(2)
District Missionary Secretary	George G. Meyer	
Director of Evangelism	H. R. Holland	
Director of Arkansas Methodist	T. D. Spruce	
Student Perkins School of Theology	Francis Christie	
Secretary Service Men's Council, New York, N. Y.	David A. Weems	
U. S. Army Hospital	Wallace M. Callaway	
Chaplain U. S. Army	W. L. Arnold	

LITTLE ROCK DISTRICT

E. C. Rule, District Superintendent (3)

Austin Circuit	L. O. Lee	(2)
Beuxite-Sardis	B. F. Fitzhugh	(1)
Bryant Circuit	(Howard Williams)	(2)
Carlisle	Richard T. Perry	(1)
Carlisle Circuit	(Virgil C. Bell)	(1)
Des Arc-New Bethel	Orrie L. Thompson	(5)
DeVall's Bluff	(William Elder)	(4)
Douglassville-Geyer Springs	L. C. Gatlin	(1)
England	Fred Schwendimann	(2)
Hazen	W. R. Boyd	(3)
Hickory Plains Circuit	(Albert Oliver)	(2)
Keo-Tomberlin-Humnoke	Forney Harvey	(2)
Little Rock Churches:		
Asbury	W. Neill Hart	(3)
Capitol View	A. C. Carraway	(2)
First Church	Aubrey G. Walton	(3)
Associate Pastor	Charles W. Richards	(1)
Forest Park	Ralph Sewell	(1)
Henderson	Alfred Doss	(5)
Highland	John L. Tucker	(1)
Hunter	James E. Major	(3)
Oak Forest	D. Mouzon Mann	(2)
Pulaski Heights	E. D. Galloway	(3)
St. Marks Circuit	(S. L. Durham)	(1)
Scott Street	J. F. Fulkerson	(1)
28th Street	C. H. Farmer	(4)
Winfield	Kenneth L. Spore	(3)
Associate Pastor	Louis W. Averitt	(2)
Lonoke	J. E. Dunlap	(1)
Mabelvale	Alfred deBlack	(4)
Primrose	L. E. Wilson	(1)
Roland Circuit	(To Be Supplied)	
District Missionary Secretary	A. C. Carraway	
Director of Evangelism	J. L. Tucker	
Director Arkansas Methodist	Fred Schwendimann	
Deaconess	Miss Margaret Marshall, City Missions	
Chaplain, Veterans Administration	Earl R. Lewis, Lonoke Q.C.	
Chaplain, U. S. Navy	John W. Hammons, First Church, Little Rock, Q.C.	
Student Perkins School of Theology	Gerald C. Dean	

LITTLE ROCK CONFERENCE

MONTICELLO DISTRICT

T. T. McNeal, District Superintendent (2)

Arkansas City-Kelso	(Jeff Davis)	(2)
Crossett	O. E. Holmes	(1)
Dermott	W. D. Golden	(3)
Drew Circuit	(Robert L. Riggins)	(2)
Dumas	R. F. Sorrells	(5)
Eudora	R. O. Beck	(1)
Fountain Hill Circuit	(J. C. Van Horn)	(1)
Hamburg	Robert L. Long	(1)
Hermitage Circuit	(A. J. Bearden)	(3)
Lake Village	J. Ralph Clayton	(2)
McGehee	M. W. Miller	(2)
Monticello	Roland E. Darrow	(1)
Montrose-Snyder	To Be Supplied	
New Edinburg Circuit	To Be Supplied	
Portland-Parkdale	Clem Baker	(2)
Tillar-Winchester	Joe B. Roe	(1)
Warren	Hal H. Pinnell	(1)
Watson	W. T. Bone	(1)
Wilmar Circuit	(O. W. Hoover)	(2)
Wilmot	Robert McCammon	(3)
Paul E. Martin Chapel	(Harould Scott)	(1)
District Missionary Secretary	Rowland E. Darrow	
Director of Evangelism	O. E. Holmes	
Director Arkansas Methodist	Hal. H. Pinnell	
District Rural Worker	H. D. Ginther	(1)

PINE BLUFF DISTRICT

Fred R. Harrison, District Superintendent (3)

Almyra	Bryan Stephens	(3)
Alzheimer-Wabbaseka	R. H. Cannon	(2)
Bayou-Meto Circuit	(W. V. Walthall)	(1)
De Witt	C. E. Whitten	(1)
Gillett	I. A. Love	(2)
Good Faith	(Hursel Richert)	(1)
Grady-Gould	C. B. Wyatt	(5)
Humphrey-Sunshine	George L. Cagle	(2)
Little Prairie Circuit	To Be Supplied	
Pine Bluff Churches:		
Carr Memorial	John L. Hoover	(1)
First Church	William E. Brown	(3)
Hawley Memorial	C. D. Cade	(3)
Lakeside	Otto W. Teague	(2)
Pine Bluff Circuit	(W. E. West)	(2)
Rison	George W. Robertson	(3)
Roe Circuit	C. R. Andrews	(4)
Rowell Circuit	(James B. Swain)	(1)
Sheridan	T. M. Armstrong	(3)
Sheridan Circuit	(S. L. Durham)	(1)
Sherrill-Tucker	A. W. Hamilton	(3)
St. Charles Circuit	To Be Supplied	
Star City Circuit	Alva C. Rogers	(1)
Stuttgart Churches:		
First Church	Virgil D. Keeley	(2)
Grand Avenue	H. O. Bolin	(2)
Swan Lake	(George J. Barth)	(1)
Whitehall-Redfield	To Be Supplied	
Director of Evangelism	V. D. Keeley	
District Missionary Secretary	Otto W. Teague	

THE METHODIST CHURCH

Director Arkansas Methodist _____ H. O. Bolin
 Chaplain, U. S. Navy _____ Roland W. Marsh, First Church, Pine Bluff Q.C.
 Chaplain, U. S. Navy _____ Welton Meeks, First Church, Pine Bluff Q.C.
 Students Perkins School of Theology: Donald James McCammon, Everett M. Vinson

PRESCOTT DISTRICT

Van W. Harrell, District Superintendent (5)

Amity Circuit	_____	C. D. Meux (1)
Bingen Circuit	_____	(A. N. Youngblood) (1)
Blevins Circuit	_____	Robert W. Core (2)
Center Point Circuit	_____	To Be Supplied
Delight Circuit	_____	Osborne White (1)
Dierks Circuit	_____	John W. Rushing (1)
Emmett Circuit	_____	Joe H. Robinson (1)
Forester Circuit	_____	(E. T. McAfee) (1)
Glenwood Circuit	_____	K. K. Carithers (2)
Associate Pastor	_____	Mrs. K. K. Carithers (2)
Gurdon	_____	George E. Reutz (1)
Hope	_____	J. E. Cooper (1)
Langley Mission	_____	(George Townsend) (7)
Mineral Springs Circuit	_____	W. C. Lewis (5)
Mt. Ida	_____	Will S. Cazort (7)
Murfreesboro	_____	Noel Cross (1)
Nashville	_____	R. A. Teeter (2)
Okolona Circuit	_____	R. C. Walsh (1)
Prescott	_____	C. Ray Hozendorf (3)
Prescott Circuit	_____	To Be Supplied
Springhill Circuit	_____	(W. C. Onstead) (1)
Washington Circuit	_____	R. D. McSwain (2)
District Missionary Secretary	_____	C. R. Hozendorf
Director of Evangelism	_____	J. E. Cooper
Director Arkansas Methodist	_____	R. A. Teeter
Student Perkins School of Theology	_____	Cagle Fair
Deaconess	_____	Miss Ary Shough

TEXARKANA DISTRICT

A. J. Christie, District Superintendent (6)

Ashdown	_____	Clinton Atchley (1)
Buckner Circuit	_____	To Be Supplied
Cherry Hill Circuit	_____	(C. E. Lawrence) (2)
Columbia Circuit	_____	A. N. Stonecipher (1)
DeQueen	_____	Doyle T. Rowe (2)
Doddridge Circuit	_____	G. B. Pixley (4)
Foreman	_____	Eldred Blakeley (1)
Fouke Circuit	_____	(James E. Christie) (1)
Hatfield Circuit	_____	(R. M. Crain) (1)
Horatio	_____	W. Braska Savage (3)
Lewisville	_____	James A. Simpson (1)
Lockesburg	_____	Claude R. Roy (2)
Mena	_____	Mark F. Vaught (1)
Richmond Circuit	_____	George C. Bailey (2)
Sardis-Shiloh	_____	(W. W. Fincher) (4)
Shady Grove	_____	(J. Logan Simpson) (1)
Stamps	_____	J. W. Mann (2)
Taylor Circuit	_____	E. T. Miller (1)
Texarkana Churches:	_____	George Kerr (2)
College Hill	_____	Fred L. Arnold (4)
Fairview	_____	Edward W. Harris (2)
First Church	_____	

LITTLE ROCK CONFERENCE

Texarkana Circuit ----- (Dewey L. McCauley) (2)
 Wilton Circuit ----- S. W. Mooty (2)
 Associate Pastor ----- Mrs. S. W. Mooty (2)
 Winthrop Circuit ----- (G. L. Glasgow) (1)
 District Missionary Secretary ----- Edward W. Harris
 Director of Evangelism ----- Clinton Atchley
 Director of Arkansas Methodist ----- Doyle T. Rowe
 Students Perkins School of Theology: James Edward Christie, Wayne
 Banks, Clyde T. Parsons.

SPECIAL CONFERENCE APPOINTMENTS

Executive Secretary Board of Education ----- Roy E. Fawcett
 Conference Missionary Secretary ----- W. B. Slack
 Conference Secretary Evangelism ----- John McCormack
 Conference Director Youth Work ----- C. Ray Hozendorf
 Conference Director Golden Cross ----- E. D. Galloway
 Superintendent Methodist Hospital ----- R. E. Simpson
 Professor Emory University ----- R. C. Rhodes
 Supernumerary ----- Harold D. Sadler

TRANSFERRED IN

C. W. Richards, Elder, from Tennessee Conference
 J. F. Fulkerson, Elder, from St. Louis Conference

TRANSFERRED OUT

L. M. Starkey, Elder, to St. Louis Conference
 Wm. J. Reid, Elder, to Louisiana Conference

REPORTS OF BOARDS, COMMITTEES AND COMMISSIONS

JOINT COMMISSION OF THE ARKANSAS METHODIST

The Arkansas Methodist Commission, comprising equal membership in the Little Rock and North Arkansas Conferences, submits the following report and makes the following recommendations for the ensuing year, in accordance with decisions reached in the annual meeting of the Joint Commission on August 2, 1946:

1. That we again record our sincere thanks to Dr. E. T. Wayland for his services as Editor and Business Manager and to the helpful staff of assistants with him.

2. That E. T. Wayland be appointed Editor and Business Manager of the Arkansas Methodist.

3. That Ewing T. Wayland be appointed Associate Editor and Assistant Business Manager of the Arkansas Methodist.

4. That there be allowed for the Arkansas Methodist, by the Commission on World Service and Finance, the same apportionments for the ensuing year as were granted by the Conference during the year now closing.

5. That the subscription goal for the Arkansas Methodist for this Conference year be fixed at 20,000 as a minimum. Because of the special campaign for Hendrix College, because of the church-wide Stewardship Campaign this year, and because of the general religious information and inspiration the Arkansas Methodist carries and all Methodists of Arkansas need, we believe that it is vitally important that at least twenty thousand of the forty-five thousand Methodist homes in Arkansas receive the Arkansas Methodist.

6. That the Annual Conference adopt as their plan for the annual circulation campaign for the Arkansas Methodist the same general plan that has been followed for the past five years, as recorded in the Conference Journals, and that January 5th through January 12th be fixed as the date for the annual circulation campaign for this Conference year.

7. That despite the unusually large increase in the cost of paper and printing, the subscription price of the paper be \$1.25, the same as for the past four years.

Respectfully submitted,

A. G. WALTON, Chairman

J. S. M. CANNON, Secretary

BIBLE BOARD

Report No. 1

The American Bible Society is to be commended for its distribution of the Bible and portions of Scriptures among the people's of the world. Whereas,

The Bible brings to people the faith that leads to freedom, so the Church must urge the practice of the teachings of the Scriptures, Be It Resolved,

That the Little Rock Conference pay its usual amount to the American Bible Society,

That all our people be urged to take part in the National Bible Reading plan to be carried on from Thanksgiving Day to Christmas,

That each Church be urged to observe Bible Sunday.

W. T. BONE, Chairman

C. D. MEUX, Secretary

BOARD OF CONFERENCE CLAIMANTS

Report No. 1

This Conference has responded splendidly to the needs of our Claimants during the last few years. This has enabled your Board to provide a more liberal annuity for all our Claimants. However, we need to remember that the rise in the cost of living has wiped out much of the gain.

Last session of the Conference authorized your Board to raise additional funds by Living Endowment. It became necessary to postpone this plan. However a small amount came in from this source.

This year your Board is paying \$20.00 per service year to retired ministers. This is a small increase over last year and has been made possible by the increase in salaries. Since there has been no increase in percentages since 1943, and the income is insufficient to meet the needs of our Claimants, your Board most respectfully requests an increase of one (1) percent in each bracket.

For pastoral charges paying the pastor:

	to \$ 500.	an amount equal to 7% of pastor's salary
501.	to 1000.	an amount equal to 8% of pastor's salary
1001.	to 1500.	an amount equal to 9% of pastor's salary
1501.	to 2000.	an amount equal to 10% of pastor's salary
2001.	to 2500.	an amount equal to 11% of pastor's salary
2501.	to 3000.	an amount equal to 12% of pastor's salary
3001.	to 3500.	an amount equal to 13% of pastor's salary
3501.	and up	an amount equal to 14% of pastor's salary

A Resolution will be presented to this Conference asking for authority to make further provision for our Claimants, which we trust will be adopted.

Four of our Claimants, with long years of valiant service, died during the year. They are John C. Cummins, Milton K. Irvin, Herbert B. Vaught and J. C. Williams.

Your Board attempts to keep in touch with all our Claimants and in several instances we have provided needed medical assistance out of the emergency fund.

In compliance with Par. 1613 (10) of the 1944 Discipline, this Conference two years ago authorized your Board to set aside an amount equal to 5% of our Conference income as a reserve fund "in order to stabilize the annuity rate payable in the Conference." This has been done and will continue until we have accumulated a reserve fund equivalent to 25% of the average annual income for the past five years.

This Conference also authorized your Board to set aside an amount equal to one-half of one percent ($\frac{1}{2}$ of 1%) of the cash salary paid the pastors to be paid to the General Board of Pensions for a stabilizing fund to become operative at the next General Conference. This has been done and will continue throughout the Quadrennium.

These two special funds and our emergency fund are deposited in the Simmons National Bank, Pine Bluff. Regular funds are deposited in W. B. Worthen Co., Bankers, Little Rock.

Respectfully Submitted,

S. T. BAUGH, Chairman

ALTON B. RANEY, Secretary

BOARD OF CONFERENCE CLAIMANTS

Report No. 2

(Apportionments)

We submit the Claimant Roll, including superannuated preachers, widows of preachers and dependents of deceased ministers, showing the amount allocated to each claimant.

The apportionments are made on an equity basis being determined by the years of service rendered. Apportionments to widows being on a basis of 70% of that which their husbands would receive per year of service, for the actual time of service rendered while she was his wife.

Dependent children's claim is determined by multiplying the father's approved years of service by one-fourth of the annuity rate, provided that in no case the total annuity claim of the children exceeds the annuity claim of the deceased father.

Your Board of Claimants is pleased to report that due to effectiveness of the graduated scale of percentages by which the charges pay to this fund, and to the 100% giving of all Churches, our income has been stabilized and we are able to announce another \$2.00 per year of service increase in our allocations.

This year we are in a position to pay \$20.00 per year of service to retired Ministers and \$14.00 to claimant widows, whereas we paid \$18.00 and \$12.00 respectively last year.

We indicate below years of service, amount paid to claimant by the General Board and the amount distributed by this Board.

The Conference Board of Claimants has authorized the Treasurer, Otto W. Teague, to distribute the Conference Funds to claimants, November 1, 1946 and April 10, 1947, paying half of the allocation at each time.

Our Claimant Preachers

NAME AND ADDRESS	Years Of Service	Genl. Board Amt.	Conf. Board Amt.
1. Ault, Rev. H. A. F., Rowell, Arkansas	11	\$14.63	\$220.00
2. Baker, Rev. J. D., Hot Springs, Ark.	35	New	700.00
3. Barnett, Rev. M. O., Dumas, Arkansas	42	55.86	840.00
4. Burnett, Rev. S. K., 615 Ward, Hot Springs	40	53.20	800.00
5. Campbell, Rev. W. F., 812 S. 15th, Arkadelphia	30	39.90	600.00
6. Cannon, Rev. F. C., Rt. 2, Waynesboro, Va.	35	46.55	700.00
7. Clark Rev. T. P., 2019 Weems, Conway, Ark.	33	42.56	660.00
8. Criswell, Rev. J. L., 402 Dudley Rd., Lexington, Ky.	10	13.30	200.00
9. Davis, Rev. C. B., Box 563, Haworth, Okla.	13	17.29	260.00
10. Doak, Rev. F. P., Nashville, Arkansas	46	61.18	920.00
11. Dunn, Rev. J. D., Rt. 5, Box 105 El Dorado	31	41.23	620.00
12. Durham Rev. S. L., Sheridan, Ark.	9	11.97	180.00
13. Evans, Rev. L. W., 1416 W. 6th Ave., Pine Bluff	21	27.93	420.00
14. Farr, Rev. Roy E., 211 Morrison, Hot Springs	9	11.97	180.00
15. Hanna, Rev. E. D., 112 Summer, Hot Springs	11	14.63	220.00
16. Henderson, Rev. J. A., 15th St., Arkadelphia	52	69.16	1040.00
17. Hopkins, Rev. W. T., 4706 W 12th, Little Rock	16	21.28	320.00
18. Hundley, Rev. L. E. N., Pine Bluff, Ark.	38	new	760.00
19. Rev. J. L. Leonard, 2123 S. Valmar, Little Rock	36	47.88	720.00
20. Nethercutt, Rev. J. W., 14328 Gilmore, Van Nuys, California	20	26.60	400.00
21. Nunn, Rev. T. W., Rt. 3, Box 34-A, Tulsa, Okla.	39	19.95	780.00
22. Pickering, Rev. J. B., Rt. 5, El Dorado	15	19.95	300.00
23. Rail, Rev. R. J., c/o D. B. Boyd, Rt. 2, De Witt	23	37.24	460.00
24. Rodgers, Rev. J. T., St. Charles, Ark.	28	37.24	560.00
25. Rogers, Rev. J. D., 335 Stoner Ave., Shreveport, La.	14	18.62	280.00

LITTLE ROCK CONFERENCE

26. Sims, Rev. J. B.	31	41.23	620.00
27. Sparks, Rev. L. R., Louann, Arkansas	23	30.59	460.00
28. Thomas, Rev. J. W., Portland, Arkansas	41	54.53	820.00
29. Thompson, Rev. C. M., Box 101, Sparkman, Ark.	28	37.24	560.00
30. Wilcox, Rev. Doyle L., Rt. 5, Box 19, Malvern	6	7.98	120.00
31. Workman, Rev. J. M., 1704 Duncan St., Conway	44	58.52	880.00

Total ----- \$16,600.00

Claimant Widows

1. Anderson, Mrs. Stonewall, 619 Center St., Conway, Ark.	35	32.32	490.00
2. Berry, Mrs. J. W., Gurdon, Ark.	31	28.83	434.00
3. Bolls, Mrs. David A., 1103 E. Main, Wynne, Ark.	14	13.02	196.00
4. Burleson, Mrs. J. Z., 307 Kollman Court, Camden, Ark.	10	9.30	140.00
5. Cabe, Mrs. R. L., 420 Watson, St., Benton	7	6.28	98.00
6. Canfield, Mrs. F. R., Chidester, Ark.	10	8.84	140.00
7. Cannon, Mrs. J. L., Foreman, Ark.	36	33.48	504.00
8. Cannon, Mrs. J. M., 1006 E. Lincoln, Decatur, Ill.	19	17.67	266.00
9. Chambers, Mrs. G. C., Rt. 5, Box 94, Magnolia	18	.93	252.00
10. Christie, Mrs. W. W., Rt. 5, Magnolia	45	41.39	630.00
11. Colson, Mrs. J. J., Hermitage, Ark.	25	23.25	350.00
12. Crowson, Mrs. W. M., Arkadelphia, Ark.	29	26.97	406.00
13. Cummins, Mrs. J. H., Box 304, McGehee, Ark.	48	new	672.00
14. Dean, Mrs. S. C., c/o Tom Hundley, Unit 2, Box 677, Plainview, Pine Bluff, Ark.	35	32.55	490.00
15. Dickerson, Mrs. J. R., 420 E. 12th, Texarkana, Ark.	31	28.37	434.00
16. Evans, Mrs. A. O., 1231 Evans Ave., Arkadelphia, Ark.	16	14.65	224.00
17. Fitzgerald, Mrs. W. A., Amity, Ark.	20		280.00
18. Galloway, Mrs. Jesse, Delight, Ark.	7	6.05	98.00
19. Glass, Mrs. J. H., Box 469, Conway, Ark.	48	42.32	672.00
20. Greene, Mrs. C. J., 1221 Clifton, Conway, Aark.	21	19.53	294.00
21. Hammons, Mrs. J. D., 2824 Gaines St., Little Rock, Ark.	33	30.69	462.00
22. Jackson, Mrs. M. C., Route 2, c/o Mrs. Cora Hughes, Camden, Ark.	38	.93	532.00
23. James, Mrs. R. P., Holding Institute, Laredo, Texas	19	17.21	266.00
24. Kelly, Mrs. E. R., 726 Manzanita Ave., Pasadena, Calif.	14		196.00
25. Manney, Mrs. Anna C., Box 188, Greenville, Tenn.	12		168.00
26. Marshall, Mrs. Mattie (J. H.), Rt. 2, Siloam Springs, Ark.	3		42.00
27. McClintock, Mrs. R. A., Box 4, Wilmar, Ark.	8	7.21	112.00
28. McGuyre, Mrs. H. H., 107 S. Palm St., N. Little Rock, Ark.	33	29.99	462.00
29. Messer, Mrs. C. F., Rt. 1, Box 62, Riverview Rd., Hot Springs, Ark.	13	12.09	182.00
30. Millar, Mrs. A. C., Mineral Springs, Ark.	15	13.95	210.00
31. Monk, Mrs. Marion S., 1523 Cumberland, Little Rock, Ark.	34	30.69	476.00
32. Musser, Mrs. B. F., 722 E. 52nd, Savannah, Ga.	22	20.46	308.00
33. Nelson, Mrs. W. W., 1301 Scott, Little Rock	24	23.32	336.00
34. Owen, Mrs. T. O., 1824 N. Polk St., Little Rock, Ark.	34	31.16	476.00
35. Parker, Mrs. J. A., 311 S. Avenue, Hot Springs, Ark.	10	9.07	140.00

THE METHODIST CHURCH

41

36. Rainey, Mrs. S. W., 9819-16 S. W., Seattle 6, Wash.	24	22.32	336.00
37. Roebuck, Mrs. B. Frank, 642 Whittington Ave., Hot Springs, Ark.	30	new	420.00
38. Rodgers, Mrs. W. J., 1013 New York St., Memphis, Tenn.	24	22.32	336.00
39. Rogers, Mrs. L. T., Rt. 1, Pine Bluff, Ark.	22	19.76	308.00
40. Rogers, Mrs. M. K., Sheridan, Ark.	39	36.27	546.00
41. Rorie, Mrs. T. O., 103 Alpine, Hot Springs	15	13.49	210.00
42. Sage, Mrs. J. A., 219 W. 6th, Pine Bluff	44	40.69	616.00
43. Scott, Mrs. B. F., 403 S. Hamilton St., Camden, Ark.	41	31.13	574.00
44. Seay, Mrs. Edgar 2224 Alice St., Dallas 4, Texas	4	3.72	56.00
45. Simmons, Mrs. J. F., 208 Rosetta, Little Rock	25	22.55	350.00
46. Simpson, Mrs. H. L., Box 492, Eudora, Ark.	25	22.79	350.00
47. Steel, Mrs. E. R., 4000 Shenandoah, Dallas, Texas	30	27.90	420.00
48. Stephenson, Mrs. J. M., Monticello, Ark.	45	.93	630.00
49. Taylor, Mrs. J. F., 611 E. Page St., Malvern	28	26.27	392.00
50. Thomas, Mrs. James, 1907 Broadway, Little Rock, Ark.	19	17.67	266.00
51. Thompson, Mrs. J. T., 4410 Cowan St., Dallas 9, Texas	22	20.46	308.00
52. Toombs, Mrs. W. C., 1303 Franklin, N. Little Rock, Ark.	21	19.30	294.00
53. Ursery, Mrs. I. J., Prescott, Ark.	8	.93	112.00
54. Vaught, Mrs. H. B., Conway, Ark.	35	new	490.00
55. Waddell, Mrs. J. E., c/o T. A. Waddell, St. Charles, Ark.	24	22.32	336.00
56. Watson, Mrs. W. C., 704 Whittington Ave., Hot Springs, Ark.	43	39.99	602.00
57. Mrs. H. H. Watson, 1608 Beect St., Texarkana	13	11.86	182.00
58. Wilson, Mrs. R. F., Rt. 1, Box 263, Camden	16	14.88	224.00
59. Wozencraft, Mrs. R. L., 404 N. Agee, Camden	7	5.81	98.00
60. Wright, Mrs. Barnett, 1406 Second Ave., Alexandria, La.	2	1.40	28.00
TOTAL			\$19,922.00

Claimant Dependent Children

	(Age)	
1. James, Lucy Lu, Holding Institute, Laredo, Texas	15	63.75
2. James, Enoch Marvin, Holding Institute, Laredo, Texas	11	63.75
3. McGuyre, Mary, 107 S. Palm St., N. Little Rock, Ark.	18	123.75
TOTAL		\$251.25

Supplementary

Wherease: It is not within the power of the Board of Conference Claimants to allocate money from the regular Conference Funds to special claimants without sanction of the Conference, and

Whereas: The following are accepted supply pastors having reached the age of retirement and recommended by the committee on Conference Relations,

Be it resolved: That the treasurer pay them an annuity out of the

regular income for Conference Claimants as per paragraph 1633 of the 1944 Discipline.

1. Fincher, Rev. W. W., Stamps, Ark.	33	new	259.05
2. Ginnings, Rev. J. A., 1105 Cleveland, Texarkana	20		157.00
3. Rose, Rev. M. T., Rt. 1, Arkinda, Ark.	9		149.15
4. Simpson, Rev. John N., Rt. 2, Mena, Ark.	22		172.70
5. Robison, Rev. O. C., Oklahoma City, Okla.	19		149.15

COMMITTEE ON DISTRICT CONFERENCE JOURNALS

Your committee on District Conference Journals, have examined the Journals of the following Districts: Arkadelphia, Camden, Little Rock, Monticello, Pine Bluff, Prescott, Texarkana, and found them in excellent condition. The District Superintendents and their Secretaries are to be commended for the fine way in which these records are kept.

HAL H. PINNELL, Chairman
CURTIS WILLIAMS, Secretary

BOARD OF EDUCATION

Report No. 1

Promotional Work

The Crusade for Christ—We continue to give the Crusade for Christ the central place in our planning for the year ahead. Even though encouraged by the gains of the past year, we recognize the urgency of a well-planned program of Evangelism and the necessity of reaching more people with better Christian teachings. Toward the attaining of these over-all objectives, we, therefore, offer the following recommendations:

1. That we give careful attention to the conservation of those whom we have won to Christ and the Church by enrolling them in the Church School and otherwise encouraging them to be faithful to their membership vows.

2. That we continue to set definite goals for enrollment, for additional workers, and for additions to the Church, these goals to be set in the light of the opportunities that each situation presents.

3. That wherever practical, we re-organize abandoned schools, and establish new schools in unchurched areas.

4. That we cooperate whole-heartedly with the other agencies of the church in the promotion of stewardship, through—

a. A well planned program of general cultivation and leadership training.

b. Encouraging the practical expression of the Stewardship principle in Christian Service.

c. A sustained program of enlistment for full-time Christian service.

d. A more generous sharing of material means for Kingdom extension at home and abroad.

Leadership Training—We believe that we should give renewed attention to the discovery, the enlisting, and developing of local church leadership, if we are to turn the Crusade for Christ into a great movement for the coming of the Kingdom of God. Where possible, we recommend regular units of training, and in situations where groups cannot be brought together in formal classes, we commend the Fellowship of Study and such other types of informal training as make for a more skilled and effective leadership.

We call attention to the leadership possibilities at Mt. Sequoyah, and recommend increased attendance by Conference, District and Local Church workers.

Fourth Sunday Missionary Emphasis—We believe that the Fourth

THE METHODIST CHURCH

Sunday Missionary program and offering should have a wider observance, especially by churches that do not have an effective program of missionary education and of systematic offerings to World Service.

Work of the Church School Divisions—We shall seek a plan and promote the best possible program for each age group, the details of the programs to be worked out in the light of the opportunities presented and the leadership available.

Southern Methodist University—We remind the conference of the great work being done by Southern Methodist University, and advise that our young ministers take their seminary training there in the Perkins School of Theology. We recommend the continuation of the \$400 cash scholarship to be made available to one of our Conference men in the School of Theology, said amount to be taken from the Ministerial Education Fund.

Policy on Ministerial Training—We request that the statement of the policy on Ministerial Training be reprinted from the 1945 Journal as Report No. 4 of the Board of Education for the current year.

Arkansas Pastors School—We nominate the following to serve on the Board of Managers: A. G. Walton, R. B. Moore, J. L. Dedman, Mrs. T. S. Lovett, W. Neill Hart, C. Ray Hozendorf, and Roy E. Fawcett. Cabinet member, Arthur Terry.

Philander Smith College—We commend the work that is being done by Philander Smith College for negroes. We believe that its administration is worthy of the confidence and support of those interested in a better understanding between the races.

Church School Day—We request that Sunday, April 20th, be named as Church School Day, and that the goal for the offering be the same as in past years, \$3600.00.

Conference Staff—We have elected Roy E. Fawcett Executive Secretary and request the Bishop to appoint him to this office. We nominate Mrs. W. F. Bates, Conference Director of Children's Work and C. Ray Hozendorf, Conference Director of Youth Work.

Camp Committee—We recommend the continuation of the Conference Camp Committee and that the chairman and Executive Secretary be the representatives of the Board.

Additional Board Member—We nominate and request the conference to elect Rev. J. E. Cooper as a member at large of the Board of Education.

Student Recognition Day—We recommend the observance of Student Recognition Day, where the number of students justify and where otherwise practical.

Apportionments—We request of the World Service Commission the same apportionments as last year.

Respectfully Submitted,
A. G. WALTON, Chairman
R. B. MOORE, Secretary

BOARD OF EDUCATION

Report No. 2

We rejoice in the encouraging reports of progress in the financial program of Hendrix College. Assurances on every side that Methodists of Arkansas and other friends of the institution will now strengthen the physical resources of our college for larger service in Christian education, should inspire us to bend every effort toward complete success in the \$1,000,000 campaign. Acknowledging with appreciation the further recognition of Hendrix and endorsement of her program by the General Education Board of New York, as expressed by the grant of \$200,000, conditioned upon the remaining \$800,000 being raised by other Hendrix friends, we recommend and strongly urge that campaign com-

LITTLE ROCK CONFERENCE

mittees in all districts emphasize the importance of completing the work as soon as possible. While February 1947 is the month of general solicitation when every Methodist will have an opportunity to participate in this united effort in support of our common cause, it is believed that many districts will have reached their quotas before that time.

Trustees—We recommend the election of these Hendrix trustees:

A. G. Walton to succeed himself, term to expire in 1952

C. E. Hayes to succeed himself, term to expire in 1952

Arthur Terry to succeed C. M. Reeves, unexpired term to expire in 1951.

Trustee at Large—

Connor Morehead to succeed himself, term to expire in 1952.

Alumni Trustee—

Albert Graves to succeed himself, term to expire in 1952.

A. G. WALTON, Chairman

R. B. MOORE, Secretary

BOARD OF EDUCATION

Report No. 3

Wesley Foundation Work

Part I

We recommend that the Little Rock Conference make available the sum of \$1500 provided the North Arkansas Conference and the Central Methodist Church of Fayetteville each provides a like amount, to be used for the ministry to the returned veterans who are Methodist, or Methodist constituents, attending the University of Arkansas.

We recommend that this money be appropriated from the fund set up for chaplains in this Conference.

We recommend further that a committee to direct the use of these funds be composed of the District Superintendent of the Fayetteville District, the pastors of the Central and Wiggins Memorial Methodist Churches in Fayetteville, the Director of the Wesley Foundation of the Central Methodist Church, and the treasurer of the Central Methodist Church.

Part II

We recommend that each local church within the Conference be requested to contribute \$5 for each constituent of that church attending a college or a University in the State of Arkansas; that this money be forwarded directly to the Methodist Church where the student is attending school; that this money be used by the Church receiving it for a student program of spiritual ministry to college youth; and that the Church receiving the funds, report annually to the Conference Board of Education, stating the amount received for this purpose, the source of the contributions, and the manner in which the money has been expended.

Part III

We recommended that the balance left in the Chaplains Fund, after the amount of \$1500 referred to above has been set aside, be turned over to the Town and Country Commission to be used by that body for operation this year.

A. G. WALTON, Chairman

R. B. MOORE, Secretary

BOARD OF EDUCATION**Report No. 4****Ministerial Training**

In cooperation with the Board of Ministerial Training, we recommend the following joint policy for the program of Ministerial Education.

1. To qualify for a loan or work under the Ministerial Education Program of the Little Rock Conference, a ministerial student shall have been licensed to preach and duly recommended to the Committee in writing by a District Superintendent.

2. A ministerial student who qualifies may borrow from the Ministerial Education Fund according to his needs, an amount not to exceed \$300 in any one year.

3. In repaying his indebtedness to the Fund, a student may be allowed to render service during the vacation season under the direction of the Committee, for which he shall receive credit at the rate of \$25 per week for a maximum of twelve weeks. If he owes only a part of the maximum amount and if he desires to work and his services are needed, he may work the entire twelve week period, and the amount earned above his indebtedness shall be credited against assistance for future training.

4. A joint committee of six, consisting of the Chairman of the Board of Education, the Executive Secretary of the Board of Education, the Treasurer of the Board of Education, the Secretary of the Board of Education, the Chairman of the Board of Ministerial Training, and the Registrar of the Board of Ministerial Training, shall allocate all funds according to the need, upon recommendation of the District Superintendents. The ministerial students repaying loans through service during the vacation period shall be assigned by the joint committee together with the District Superintendents.

5. A note shall be executed for all loans made and such notes shall be credited and marked paid when sufficient satisfactory service has been rendered during the vacation period under the direction of the joint committee and the District Superintendents.

6. The joint committee shall be charged with the responsibility of keeping informed concerning the progress made by the ministerial student participating in this program, both in his school work and in his work during the vacation period. For continuance in this program the student must maintain a reasonable standard of academic work as well as a high standard of Christian conduct.

A. G. WALTON, Chairman

R. B. MOORE, Secretary

BOARD OF EVANGELISM**Report No. 1**

We rejoice to report that the great success which has attended the labors of the Church in the Crusade Year of Evangelism has been participated in by the Little Rock Conference, with practically every District and Church reaching their quota, with many Churches gaining far beyond the quota.

Reference is made to report No. 2 of this Board for the figures on goals and achievements by Districts. The record by Conference year, will be seen in the statistical reports of this Conference.

Attention is called to the fact that one of the principal goals of the Crusade Year of Sewardship is the continuation of the Evangelistic emphasis. All our Churches should perfect and maintain their set-up for visitation and other forms of evangelism, and we urge that each District and each charge and Church adopt goals for their evangelistic work in the coming year.

We have elected John M. McCormack Conference Secretary of Evangelism and respectfully request the Bishop to appoint him to that office. We are hoping that the day is not far distant when finances will permit our Board to place in the field a full time Secretary of Evangelism to direct visitation, and other forms of Evangelism on a full time scale.

The Board pledges cooperation with the Bishop, the Cabinet, and other Boards and agencies in promoting the Crusade Year of Stewardship in which we are now engaged. We also pledge our support of the million dollar campaign for Hendrix College.

Kenneth L. Spore has been elected to continue on the Committee to procure a campsite for the Little Rock Conference and John L. Tucker has been elected to represent the Board of Evangelism on the Commission on Town and Country Life.

John L. Tucker is Treasurer of the Board and he is duly bonded. We have elected J. D. Baker to remain on the board as a member at large.

The Board of Evangelism has sponsored the "Methodist Crusaders," Broadcast now for two years over KARK, Little Rock. A few weeks back the station gave a new and better hour following the News Broadcast, heard now from 9 to 9:30 A. M., each Saturday. The speakers are brought in from over the Conference and fine messages have been delivered. The male quartet composed of Rev. Fred Schwendimann, Alfred Doss, Curtis Williams and John McCormack have been giving their time and services each Saturday. Miss Virginia Guffey is the accompanist for the quartet. This has been a real sacrifice for Bro. Schwendimann and Williams, since they have to drive back and forth on Saturday. This ministry has reached out all over the state and brought the gospel to thousands of people. The hundreds of comments received have been favorable and encouraging. It is the plan of your Board to continue this service.

Through the Superintendents and District Secretaries of Evangelism a part or all of the appropriations for the respective districts was used to help finance the program of evangelism throughout the year. In some cases it was used in the expenses of revival meetings in communities where there was no regular pastor. In other cases it was used to pay expenses of those who assisted in visitation evangelistic efforts. An honorarium was presented to Dr. Dawson C. Bryan of Houston, Texas, for his splendid services during our Little Rock School of Evangelism in January. Traveling expenses of our pastors who live out of Little Rock, who took part in the Little Rock School in January was also paid. Some 75 copies of Dr. Dawson Bryan's book "A Workable Plan of Evangelism" was sent by the treasurer of your board of evangelism to pastors throughout the conference immediately after the Annual Conference to try to stimulate a vision and the inspiration in launching our year of evangelism program. We forwarded a check in the amount of \$500 to our Little Rock Conference treasurer, Mr. C. E. Hayes, as our part of appropriations set aside by our last Annual Conference for our returning Chaplains during the interim period. Certainly we all feel that our weekly broadcast over KARK is worth every dollar of expenses which goes into making it possible. This great year of evangelism has been the success it has in large measure because your board of evangelism had the money with which to encourage and help finance it. We request that our appropriations be the same for the year that is before us that we might help to continue what we believe to be the most vital task of our great church, the evangelization of the world. We also request that our fiscal year be from October 15 to October 15, that your treasurer might close his books and make out his report in full before leaving for the annual conference. Our financial statement is attached and may be read in the Conference minutes.

Respectfully submitted,

KENNETH L. SPORE, Chairman
JOHN L. TUCKER, Secretary

BOARD OF EVANGELISM**Report No. 2**

The reports of the Districts as given by the Superintendents, on additions in the year of Evangelism of the Crusade for Christ, which ended October 6, 1946, is as follows:

	Confession Goal	Rec'd. Certificate on Conf.	Goal	Rec'd. on Cert.	Total Goal	Total Rec'd.
Arkadelphia	715	574	615	520	1330	1094
Camden	1037	846	690	1017	1727	1863
Little Rock	1545	1448	1367	1624	2912	3072
Monticello	644	661	443	551	1087	1212
Pine Bluff	866	747	691	684	1557	1431
Prescott	700	551	474	486	1174	1037
Texarkana	666	636	345	643	1011	1279
TOTAL	6173	5463	4625	5525	10,798	10,988

Respectfully Submitted,

KENNETH L. SPORE, Chairman
JOHN L. TUCKER, Secretary

BOARD OF HOSPITALS AND HOMES**Report No. 1**

This Board is glad to report that this has been a satisfactory year with the Methodist Hospital at Hot Springs and the Methodist Home in Little Rock. They have made gratifying progress under the capable leadership of Mr. B. T. Fooks and Mr. J. S. M. Cannon and their respective Boards of Trustees.

It is the feeling of this Board that there is a growing interest in the Golden Cross Program since we have a hospital belonging to our Conference.

This Conference has always enthusiastically supported the Arkansas Methodist Children's Home (better known as the Orphanage) because it has been with us so long that it has become a part of the thinking of every local congregation in this Conference. We are glad that it is so and will remain so.

However, our people have not become so well acquainted with our new hospital, and the mercy and help program carried on through the Golden Cross funds. We hope that this year there will be a still larger interest in the Golden Cross Sunday, and the work of our hospital.

Dr. J. E. Gentry, M. D., of Blevins, came before the Board seeking to find some aid in the establishment of a home for aged people, which might be held under the supervision of the Methodist Church.

The Board consented to take the matter under serious consideration during the year, and endeavor to work out some practical plan before the meeting of the next Annual Conference. If at all possible, an experiment will be made in that direction in order to determine the possibilities in that field. There are at least 25 homes for the aged in the Methodist Church, and there is a specific need for one in our section of the Church.

We recommend that the following be nominated to fill vacancies in the Board of Trustees of the Methodist Children's Home:

Dr. Connor Morehead to succeed himself, and Rev. T. T. McNeal to succeed Dr. C. M. Reves; these to serve for a period of three years. We also recommend that Mr. Horace G. Cabe be appointed to succeed Mr. E. M. Sharp, deceased, as a member of the Board of Trustees of the hospital, and that Rev. Kenneth L. Spore, Rev. Connor Morehead, Mr.

LITTLE ROCK CONFERENCE

Ernest Powledge, and Mr. B. T. Fooks be re-appointed to the same board.

We further recommend that Mr. Tom Stone, Hot Springs, be appointed Treasurer of the Golden Cross Fund of the Conference, and that Rev. E. D. Galloway be made Director of the Golden Cross for the year 1946-47.

Again we wish to commend Mr. J. S. M. Cannon and Mr. B. T. Fooks, and the Boards of Trustees for the fine job that has been done thus far.

Respectfully submitted,

B. T. FOOKS, Chairman

C. D. CADE, Secretary

METHODIST HOSPITAL OF ARKANSAS, INC.

Report No. 1

The Board of Trustees of the Methodist Hospital of Arkansas, Inc., submit the following report to the Board of Hospitals and Homes.

We are pleased with the progress made during the first full year of operation. The building has been thoroughly renovated, all rooms refurnished and decorated, and equipment throughout the hospital is new.

It is also gratifying that the hospital has operated about 90% of its capacity throughout the year and we believe that the quality of service given has been entirely satisfactory.

We wish to express our appreciation to Bishop Martin, District Superintendents, pastors and laymen, for their cooperation in raising the designated Golden Cross Fund.

A total amount of \$28,816.01 was raised within the Conference, listed as follows, by district:

Arkadelphia District	\$4,081.41
Camden District	7,412.67
Little Rock District	6,124.79
Monticello District	3,177.05
Pine Bluff District	2,943.85
Prescott District	2,785.39
Texarkana District	2,029.32

The Board of Trustees feel that the success of this campaign was due to the untiring effort of Rev. J. L. Dedman, Conference Golden Cross Director, and our appreciation is extended to him.

Bishop Paul E. Martin and his cabinet have endorsed for your consideration, the following program:

That a minimum of \$30,000 be raised during the ensuing year by the Golden Cross Campaign, designating May 11 (Mother's Day) for this project.

That the district superintendents prorate to each district and to each charge, the amount to be requested from them.

Permission has been requested of the Board of World Service and Finance to inaugurate through a campaign, beginning in October 1947, to raise a sum sufficient to enlarge the hospital to 150 rooms.

We believe that the future of the hospital is dependent upon an immediate expansion program so that it might not only become self-sustaining, but provide funds for greater expansion in the future. The present size of the hospital, because of necessary overhead, will not allow a profit for such expansion.

We wish to express our appreciation for the fine services rendered the hospital by Miss Harriett Poe, Hospital Superintendent, who has

tendered her resignation so that she may enter a different field of hospital operation. Our best wishes go with her in her future work.

The Board of Trustees has approved the selection of Rev. R. E. Simpson to succeed Miss Poe as Superintendent of the Hospital and respectfully request that Bishop Martin make this appointment.

We wish to express our sorrow at the passing of E. M. Sharp of Prescott, an honored member of the Board of Trustees. His interest in the hospital from its beginning was unusual and its success due largely to his efforts.

It is hoped that all members and visitors to the Conference will take the opportunity of visiting the hospital during the week.

We believe that the interest of the Conference in its hospital will increase as the hospital grows in service and the constructive criticism of the Conference at any time will be appreciated by its Board of Trustees.

B. T. FOOKS, Chairman

CONNOR MOREHEAD, Secretary

METHODIST CHILDREN'S HOME, INCORPORATED

The Methodist Children's Home reports a good year in all lines of work. In the beginning of the year, we made some preparation looking forward to the early construction of some units of our new plant. The building sites were cleared and some grading done. In all, about 20 acres or more of the land were partially cleared. Plans were drawn by the architects for some units of the new institution.

We found, however, upon investigation, that it would be practically impossible for us to begin construction work this year. To this date, the situation has not changed for the better. The crowded condition of our present Home has made it necessary for us to turn away many applicants. Your Board of Trustees will authorize the beginning of new construction at the earliest possible date which may be deemed advisable.

Our printed report to the Conference has gone to all pastors and District Superintendents. A copy of the auditor's report has been placed in the hands of the Chairmen of the Board of Hospitals and Homes and the World Service Commission.

We attach hereto an abbreviated outline of receipts and disbursements as shown by the auditor's report. We are grateful for your interest and support and trust that our Christmas offering for this year may reflect a continuation of that interest and support which has been so generously given through the past Conference year.

Respectfully submitted,

J. S. M. Cannon, Superintendent

BOARD OF MISSIONS AND CHURCH EXTENSION

The Division of Church Extension

The Board is vitally interested in extending the work of the church in our Conference and has carefully considered all applications for aid that have been presented.

The following applications for loans and donations were presented to the board and acted upon.

1. A donation of \$500 from the Conference Board and \$500 from the General Board for the Paul E. Martin Chapel, near Warren, was recommended.

2. The application of the Okolona Church for a \$500 donation from the Conference Board and a \$500 donation and \$3000 loan from the General Board was recommended.

3. The application of Bethel Church, near Blevins, for a \$300 donation from the Conference Board was recommended.

4. The application of Pisgah Church, near Delight, for \$250 was recommended for a \$150 donation from the Conference Board.

5. The application for aid in remodeling a parsonage at Richmond for the amounts of \$100 donation and \$100 loan from the Conference Board was recommended.

6. The application of Watson Church for \$250 donation and \$500 loan from the Conference Board was recommended.

7. The application of Mount Tabor Church for a \$300 donation from the Conference Board was recommended.

8. The application of Good Faith Church for \$500 donation and \$500 loan from the Conference Board was recommended.

The applications of Brewer, and St. Mark's Chapel were continued for further study.

The Board unanimously adopted the following resolution, "We recommend for the future consideration of this Board to grant whatever aid may be possible for the completion of the Oak Forrest Methodist Church."

Respectfully submitted,

DOYLE T. ROWE, Chairman

J. E. DUNLAP, Acting Secretary

COMMISSION ON CHRISTIAN LITERATURE

We, your Commission on Christian Literature, respectfully submit the following report:

The large number of subscribers to our Church publications, and the great number of religious books sold to our people by the Methodist Publishing House, show that the membership of our church, in the large, are making an effort to be informed on matters relating to our church and the Christian Religion.

A word of commendation should be spoken to our ministers because of their fruitful labors in securing subscribers to our church periodicals. Results show that Methodist preachers are working at the task of keeping their members well informed.

It is our opinion that our own Arkansas Methodist is one of the most readable, helpful, desirable Church papers to be found. We are very proud of this great publication; our fine editor is a man of talent, energy and devotion to his work.

We would like to recommend that every Methodist minister preach at least one sermon each year on Religious Literature.

Our people should be urged to subscribe for and to read World Outlook, an excellent Religious magazine; Upper Room, a great help to Bible reading; New Life Magazine, inspirational and helpful; The Christian Advocate, one of the great religious periodicals of America; and, most important of all, our January campaign for subscribers to our own great Arkansas Methodist, should be prosecuted more vigorously than ever before. Dr. Wayland is furnishing us a most excellent paper.

Respectfully submitted,

M. E. SCOTT, Chairman

BEN F. FITZHUGH, Secretary

BOARD OF LAY ACTIVITIES

Report No. 1

From verbal expressions and reports of Laymen and Ministers, it is evident that Laymen of the Little Rock Conference have continued their interest, enthusiasm and active support in the over-all program of the Methodist Church. Reports show all of our church's financial goals have easily been reached even though higher budgets were universal. We rejoice that the evangelistic goals have been reached, thus completing successfully the first three phases of the Crusade program, and we pledge our support in carrying forward to a successful conclusion every program of our Church. This year of "Stewardship" the **culmination** of the Crusade for Christ program **will**, and **should**, mean much to Minister and Laymen.

We recommend—

1. That Laymen give active support to the Hendrix College Million Dollar Campaign.
2. That the Pastor and Laymen of every Church have a working "Stewardship" Committee as provided in the Discipline—and **needed**, if the "Stewardship" Crusade Program is to be successfully consummated.
3. That Pastors' sermons be on Christian Stewardship for the first twelve weeks of 1947 as suggested in the Stewardship Program.
4. That Sunday, February 23, 1947, be observed as Laymen's Day and that each pulpit be occupied by Laymen of the Local church rather than outside speakers.
5. That, wherever possible, an organization of Methodist men be started in each church.
6. That District Meetings of laymen, pastors and district superintendents be held in which ministers, lay leaders, and laymen may study together the full program of our church.
7. That the emphasis on circulation of our church papers, magazines, pamphlets and other Christian literature and books be continued by Charge Lay Leaders and pastors.

T. W. McCoy was nominated for Conference Lay Leader. T. A. Prewitt was elected Vice Chairman, Fred Gantt, Secretary, and J. S. M. Cannon, treasurer of the Board of Lay Activities.

T. W. McCOY, Chairman
FRED GANTT, Secretary

CONFERENCE CAMP COMMITTEE

At the call of Bishop Martin, the Committee met at First Church, Dec. 11, 1945, and organized by electing Kenneth L. Spore as Chairman, T. W. McCoy Vice Chairman, and Mrs. T. S. Lovett as Secretary.

We did not realize a year ago how difficult it would be to find a location that would meet the requirements for a permanent institution of the type we hope to build and make available for Conference use. Regard must be had not only for the availability of any prospective site, but its location with reference to the constituency to be served, its accessibility, health and sanitary conditions and general moral surroundings and influences. To find all these essentials centering in an available location is by no means an easy task.

Even though we are unable to report progress, the Committee has been by no means idle during the year. We have checked numerous suggested locations, calling in at different times a National Park Supervisor, a sanitation engineer, a Boy Scout Executive, and a representative from the General Staff at Nashville. From these skilled sources we have learned things we need to know before reaching a final decision as to a possible location.

We have been encouraged by the general interest in the enterprise

LITTLE ROCK CONFERENCE

as expressed by a felt need for some such institution as an aid to the promotion of our Conference Program. Once a good location has been found, we feel that we shall be ready to move forward in the achievement of these important objectives and we believe that there is such a location somewhere within the bounds of the Little Rock Conference. We hope to find it and to make a more favorable report a year hence.

We request that the same Committee be continued with the same powers and duties as given by the Act of the Conference of 1945 (see Page 120, 1945 Journal), and that the Bishop and his cabinet be empowered to act for the Conference in granting the permission referred to in paragraph 4 of said act.

Respectfully submitted,

KENNETH L. SPORE, Chairman
T. S. LOVETT, Secretary

COMMISSION ON MINISTERIAL SUSTENTATION

Report No. 1

We, your Commission on Ministerial Sustentation, submit the following as the amended plan for the incoming year.

I. Commission

1. On nomination of the Superintendent of each of the several districts, the Annual Conference shall elect quadrennially one lay member from his district and one preacher to serve on this Commission. The District Superintendents shall be ex-officio members.

2. The Commission shall elect its own chairman and such other officers as its needs may require.

3. The Commission shall meet annually at least one month before Conference at the call of the chairman, and at such other times and places as needs may require.

II. Beneficiaries

1. Beneficiaries under this plan shall be those ministers serving charges under the appointment of the Bishop, including those on trial, in full connection, and supply preachers who meet disciplinary requirements for supplies.

2. The minimum salary fixed for these shall be \$1200.00. The Commission will match dollar for dollar as far as its funds permit, any increase paid by any charge over and above the average paid by such charge for the three fiscal years ended in '41, '42, '43.

III. Raising Funds

1. For the purpose of meeting the requirements set forth in the preceeding paragraph, an apportionment of 1 per cent shall be made on all preachers salaries of \$1200.00, or more, upon the whole salary and upon all charges paying such salaries.

2. The Treasurer elected by the Commission shall be the one to receive and disburse funds accruing from this source, provided, funds shall be paid only on certification of the District Superintendent of the beneficiary.

3. District Superintendents shall report to the Commission the names of beneficiaries and the amount of aid given. The Treasurer shall keep an itemized account of the benefits paid out and report same to the chairman of this commission as soon as possible.

4. Any part of this plan may be amended at any session of the Conference on recommendation of the Commission, or on motion from the floor of the Conference.

R. H. CANNON, Chairman
R. F. SORRELLS, Secretary

BOARD OF MINISTERIAL TRAINING**Special Case**

We, the Board of Ministerial Training, of the Little Rock Annual Conference, in session at Hot Springs, Arkansas, October 31st, 1946, recommend the Rev. David M. Hankins, of the Arkadelphia District, for admission on trial by the three-fourths vote, as an exceptional case. His Superintendent, the Rev. J. E. Cooper, and the Ad Interim Committee of the Arkadelphia District, have stated in writing their opinion concerning the particulars in this case.

It is the sense of this Board that the case of David Hankins is an exceptional case in the following particulars: He has proven his exceptional ability as pastor, preacher, administrator; he has unusual gifts for the works of the ministry; his family obligations are extremely heavy and impose a burden upon his educational program; he has finished sufficient work in college to qualify him for this special vote; he is uncertain that he will be able to complete his A.B. degree, but assures the Board that he will attempt to do so, if his appointments can be arranged so that he can carry his study program and work at the same time; his age makes it uncertain that he could complete his work until he is far advanced in years. In our opinion, he constitutes an exceptional case, and merits the vote of the Conference.

EDWARD W. HARRIS, Chairman
CHAS. H. GIESSEN, Registrar

BOARD OF MISSIONS AND CHURCH EXTENSION**Report No. 1**

We rejoice in the increased support of World Service, and pray for an awakening throughout the Church to the needs at home and around the globe. Our home base needs to be stirred by the responsibilities devolving upon the Christian Church, one which we cannot ignore, but must accept. While our giving has increased markedly, still more and more must be done until the brotherhood of Christianity is felt around the world.

The Board is vitally interested in unoccupied territory, and the extremely weak spots within our own conference. So many people have moved from their former homes that the local church in some instances have been made weaker, while other localities are filled with dislocated people. We need to supply these new communities with the gospel, and re-inforce the weaker charges. We urge the stronger charges to cooperate with the District Superintendents in supplementing the appropriations of your Board. We would suggest that the District Superintendents and pastors give special emphasis to the problems within their several districts.

The following appropriations were approved by the Board for the year ahead. These include grants for special projects and support for the weaker charges.

Arkadelphia District	\$1720
Camden District	1500
Little Rock District	1400
Monticello District	1520
Pine Bluff District	1400
Prescott District	660
Texarkana District	704

TOTAL\$8,904

\$200 was approved for the work of the Little Rock City Mission.

\$500 was approved for the continuing of the work at Booneville.

A copy of the treasurer's report is attached and will appear in the Conference Journal.

The following recommendations are made:

LITTLE ROCK CONFERENCE

1. We request that District Superintendents, aided by the District staff, and pastors make a thorough survey of the several districts to discover places where some kind of Methodist work should be done and that this information be furnished the Chairman of the Board of Missions.

2. Each station pastor seriously endeavor to establish an extra preaching place.

3. Church Schools be organized in public school buildings where possible and where the work of a church school is not being done.

4. That laymen and lay women be used in the program of extending the work.

5. That Local Preachers and Superannuates not now doing preaching and teaching work be encouraged to assist.

6. That each preacher devise some suitable method of getting the information and inspiration of Dr. Ralph W. Sockman's book "The Fine Art of Using" to every possible member of his constituency.

The Board has re-elected Dr. W. B. Slack as Conference Missionary Secretary and recommend that the Bishop and Cabinet appoint him as such.

Respectfully submitted,

J. L. DEDMAN, Chairman

J. E. DUNLAP, Secretary

BOARD OF TEMPERANCE

Report No. 1

We, the Board of Temperance, wish to commend the Anti-Saloon League, and its director, C. C. Coulter, for the splendid work that has been done during the year. We also wish to commend those pastors, and laymen, who have helped in the local option campaigns of the past.

We wish to make the following recommendations:

1. That our pastors cooperate in local option campaigns in their towns and counties, and that such elections be held wherever possible.

2. That Sunday, October 26, 1947, be observed as Temperance Sunday, and a sermon on alcohol be preached in every church, and an offering be taken for the Anti-Saloon League on that date.

3. That, wherever possible, courses be taught about alcohol and its effect. Especially do we recommend that courses be taught in our summer assemblies to our youth, and in the Church Schools.

4. That we work for the passage of an inclusive bill to prohibit all liquor advertising in newspapers, magazines, or bill boards, and over the air. That public hearings be held in every community around or near January 16, to arouse an interest in the Anti liquor advertising campaign.

We have elected Rev. B. F. Fitzhugh to represent this board on the Conference Planning Committee.

Respectfully submitted,

A. E. JACOBS, Chairman

W. D. GOLDEN, Secretary

REPORT ON TOWN AND COUNTRY WORK

In order to continue the magnificent work of our great Church, following the ongoing results of the Crusade for Christ, your Commission on Town and Country Work makes the following recommendations, and requests:

1. That each Conference Board set up a special committee within the Board to make a serious study of the work of that Board as it is related to the work of this Commission.

2. That the money left in the Chaplain's Fund, the amount of which is \$987.53, after subtracting the amount to support the University of Arkansas Project, be given to the Commission on Town and Country Work.

3. That each participating Board name one person to attend the National Conference on Rural Work, July 20-31, 1947, at Lincoln, Neb.

4. That the Executive Committee as set up in the organization meeting, be the Executive Committee on Town and Country Work.

5. That full Cooperative effort of all Boards be given to carry the Church and Church School to un-churched areas.

6. That laymen, and laywomen, local preachers, and superannuates, where possible, be encouraged to assist in establishing Church Schools in public school houses, where no Church building is accessible.

7. That a survey be made in every district by the District Staff, which is composed of the District Missionary Secretary, District Director of Evangelism, District President of the W.S.C.S., District Director of Youth Work, and District Director of Children's Work, and at least one Rural Minister to be named with other persons, by the District Superintendent, and information from such survey to be presented to the Commission.

8. That these persons named in paragraph No: 7 constitute a District Committee on Town and Country Work.

9. That every station pastor endeavor to have an extra preaching place in some unchurched area.

10. That some plan be devised in every Church to make full use of the Book "The Fine Art of Using" by Dr. Ralph Sockman, and other such helpful material as may be needed by Rural Church Workers.

Respectfully submitted,

W. B. SLACK, Chairman
ROBERT CORE, Secretary

LITTLE ROCK CONFERENCE BOARD OF TRUSTEES

Report No. 1

We, your Board of Trustees, report as follows:

We had before us a request from Superintendent of the Little Rock District, Dr. E. C. Rule, for authorization by this Board to sell Taylor's Chapel on the old Roland Circuit; also, for authorization to sell the building of Brown's Chapel and to return the deed to the land on which said building stands to the original donor; also, for authorization to sell Alexander Church Building and lots.

We recommend that these requests be granted.

We also had before us request from Rev. T. T. McNeal, Superintendent of the Monticello District, for authorization to sell timber from old Bethel Church land near Snyder, Arkansas; also to sell timber from the old Keener Camp Ground Tract, funds from such sale to be used for the purpose of rebuilding the Church at Snyder and for building a camp site on the Keener Camp Ground.

We recommend that this authorization be granted.

During the year the Board of Trustees have severally approved the sale of the old Liberty Camp Ground near Texarkana for \$310.00; also, a small lot in the village of Genoa for \$10.00, proceeds of these sales are on deposit in Simmons National Bank, Pine Bluff, earmarked for use on the Texarkana District Parsonage. We ask that the Conference approve this action.

By Conference action, the policy has been established that future sales of Church properties that have been abandoned, or for other reason put up for sale, the proceeds shall be reserved for use in the the District where such property was situated.

Respectfully submitted,

J. E. COOPER, Chairman
R. H. CANNON, Secretary

LITTLE ROCK CONFERENCE

PROPOSED CHANGES IN CONFERENCE RULES

No. 2 to read: **Conference Program.** A Program for the session of the Annual Conference shall be arranged by the following Planning Committee not less than 30 days before the Conference convenes: The resident Bishop, the District Superintendents, the pastor-host, the Conference Lay Leader, the Conference President of the W.S.C.S., Chairman of the major Boards, Committees and Commissions, the Executive Secretary of the Board of Education, the Conference Missionary Secretary, and the Conference Secretary of Evangelism. Early in the Conference year the Committee may request the resident Bishop to select a Conference preacher, and arrange for all preaching, inspirational and anniversary services. This Conference program shall be published in advance of the convening of the Annual Conference. The program made by this Committee shall be subject to revision as the exigencies of any situation may require or the Conference direct.

No. 8 to read: **Reports and Resolutions.** All reports, resolutions and other papers intended for publication in the Conference Journal shall be typewritten in triplicate on special forms furnished by the Conference Secretary.

No. 9 to read: **Historical Society.** There shall be a Conference Historical Society, composed of the members of the old History Commission, and new members added, as of 1943. The Secretary of the Conference shall be a member of the Society. Any vacancies occurring, other than the shifting of a Conference Secretary, shall be filled as provided in Rule 1. It shall be the duty of the Society to collect and preserve biographical data of clerical members of the Conference, and other material that promises to be of historical value and interest. Such material to be deposited in the vault of Hendrix College, Conway, Arkansas. All District Conference Journals and records shall be deposited in fire-proof vaults in the city where the District Superintendent resides. This Society shall make a quadrennial report to the session of the Conference next following the General Conference.

No. 13. Change the last sentence of No. 13 to read: Any member of any Board, Committee, or Commission failing to attend at least one meeting of said Board, Committee, or Commission in a period of twelve calendar months may be continued as a member only upon special request from such Board, Committee, or Commission. Vacancies shall be filled as provided in Rule 1.

No. 15 to read: **Audit.** The audit account of all funds as provided for in paragraph 722 of the 1944 Discipline shall be done by certified public accountants sufficiently in advance to have its report published in the Conference Journal.

Signed,

S. T. Baugh
Kenneth L. Spore
John M. McCormack
Fred R. Harrison

RESOLUTION

Whereas, the North Arkansas Conference and the Little Rock Conference have authorized the incorporation of the Arkansas Methodist Commission, or the Arkansas Methodist, the paper published by the said Commission, and,

Whereas, such incorporation is in process and is to be completed within a few days under the name, Arkansas Methodist, Incorporated.

Therefore, be it resolved that the members of the Arkansas Methodist Commission representing this conference, be and they are hereby instructed to vote for and to cooperate in taking the necessary steps to transfer and convey to **ARKANSAS METHODIST, INCORPORATED** all assets and property of the said Arkansas Methodist Commission, when and if like instructions are given by the North Arkansas Conference to its representatives on the said Arkansas Methodist Commission.

RESOLUTION

Resolved by the Little Rock Conference of the Methodist Church assembled at Hot Springs, this 1st day of November, 1946:

1. That we urge our preachers and lay people to familiarize themselves with the conditions at our State Hospital for Nervous Diseases.

2. That we should do whatever we can to change the attitude of people toward the mentally ill.

3. That we should urge our legislature to provide better financial support of the institution.

4. That we urge the Board of Control to employ a competent psychiatrist as Superintendent of the Hospital.

5. That copies of this Resolution be given to the Gazette, Democrat and Sentinel-Record, the Commercial Appeal, the Arkansas Methodist, the Governor, the Lieutenant Governor, the Speaker Designate of the House of Representatives, the Acting Superintendent of the Hospital, and the Acting Chairman of the Board of Control.

Respectfully submitted,

KENNETH L. SPORE
A. G. WALTON

RESOLUTION OF THANKS

We are glad to have this privilege, as your committee, to express, on behalf of the conference our thanks;

To the Methodist churches and Pastors of Hot Springs for their courteous generous hospitality.

To Dr. W. B. Slack and his workers for their thoughtfulness and helpfulness to us at all times.

We want to express our deep appreciation of Bishop Fred P. Corson for his inspiring and heart-warming messages.

To Bishop Paul E. Martin for his great leadership and unfailing brotherliness throughout the session.

To the Choir of First Church, and others who, through music have given enrichment to the conference program.

To the Methodist Publishing House representatives for their contributions to the interest of the conference.

And to the Local and State press for their interest and painstaking reporting of this session of the Little Rock Conference.

Respectfully submitted,

GEO W. WARREN, Chairman
C. D. CADE, Secretary

LITTLE ROCK CONFERENCE

CALENDAR FOR THE CONFERENCE YEAR 1946-1947

November, 1946

- 11-19th, District Set-Up Meetings:
 11th Arkadelphia District.
 12th Prescott District.
 13th Texarkana District.
 14th Camden District.
 15th Pine Bluff District.
 17th Monticello District.
 19th Little Rock District.

December

- 22nd Arkansas Methodist Children's Home Sunday.
 25th Christmas Day.
 29th Student Recognition Day.
 31st Watch Night Service.

January, 1947

- Intensive Stewardship Promotion:
 January through Easter Sunday.
 5-12th "Arkansas Methodist" Week.

February

- Hendrix College Month
 3-6th Minister's Week at S.M.U.
 9th Race Relations Sunday.
 19th Ash Wednesday
 (Lent Begins)
 23rd Laymen's Day.
 Close of Hendrix College Million-Dollar Campaign.

March

- 4-6th Convocation of Jurisdictional Boards and Jurisdictional W.S.C.S., Wichita, Kansas.
 3-14 Vacation Church School Training Period.
 25-27 Little Rock Conference of W.S.C.S., Camden, Ark.
 30th Palm Sunday

April

- 6th Easter Sunday.
 11-13 Arkansas State Student Conference, Fayetteville.
 20th Church School Day.
 21-30 District Conferences W.S.C.S.

May

- 11th Mother's Day and Golden Cross Sunday.
 12-23 Period of District Conferences.
 26th through June, Vacation Church Schools.

June

- 9-20 Pastor's School.
 23-27 Youth Assembly (First).
 27-29 Arkansas Conference for Children's Workers.
 30th Through July 4th, Second Youth Assembly.

July

- 12-24 Mt. Sequoyah Leadership School.
 29-31 National Methodist Rural Life Conference, Lincoln, Neb.

August

- Sometime: Conference School of Missions of W.S.C.S.

September

- 10th Meeting of Annual Conference Planning Commission.
 28th Promotion Sunday in Church School.

October

- 5th New Church School Year Begins.
 World Communion Sunday.
 12th Veterans Sunday (Retired Ministers).
 26th World Temperance Sunday.

Statistical Report

STATISTICAL TABLE NO. 1—MEMBERSHIP, CHURCH SCHOOL STATISTICS, WOMAN'S WORK, AND CHURCH PROPERTY
ARCADELPHIA DISTRICT

CHARGE AND CHURCH		MEMBERSHIP													CHURCH SCHOOL STATISTICS									
Infants Presented for Baptism by Parents or Guar.	All Others	Youth, Adults	Baptized Children Now on Prepara-tory Roll	Total Full Member-ship Reported Last Yr-Active, Inactive	Rec'd from Prep. Membership and Profess. of Faith	Received by Transfer and Reinstated	Removed by Death	Removed by Otherwise	Total Full Members—Active	Total Full Members—Inactive	Total Full Members—Active and Inactive	Total Local Preachers	Number of Church Schools on Charge	Officers and Teachers	Enrolled in Nursery Dept. Birth to 3 Years	Enrolled in Children's Division 4-11 Years	Youth Division—12-13 Years	Enrolled in Adult Division Excl. of Home Dept.	Enrolled in Home Department	Total Enrollment				
1	2	3	4	5	6	7	8	9	10	11	12	13	14	15	16	17	18	19	20					
Arkadelphia	15	16	931	38	69	11	142	695	190	885	2	1	39	20	67	100	268	18	512					
Arkadelphia Ct., Hollywood	4	7	134	7	7	2	1	146	46	146		1	6		20	67	36	50	512					
Mt. Zion	4	1	86	1				46		46		1	6		20	67	36	50	512					
Hart's Chapel			84					85		85		1	5		25	15	12	25	112					
Mt. Pisgah			22					23		23		1	5		10	10	15	47	57					
New Hope			21									1	5		10	10	15	15	40					
Smyrna			105	11				115		115		1	6		15	15	25		61					
Total	4	19	412	19	10	4	1	436	135	436		5	27		75	85	130		317					
Benton	13	31	780	31	22	1	46	661		786		1	35	25	139	97	111		407					
Benton Ct., Pleasant Hill		1	46	1				47		47		1	6	4	16	15	12		53					
Oak Hill			48					48		48														
Paron			30					30		30														
Smyrna			20					20		20														
Total	1	7	144	1				145		145		1	6	3	19	14	15		50					
Carthage-Tulip: Carthage	7	7	174	6				174		145		1	12	7	28	29	27		103					
Mt. Zion			16					16		174		1	9		19	30	20							
Tulip			110	13	2	2		123		16								2						
Willow			23	1				24		123														
Total	1	17	317	20	2	2		337	28	337		1	6	8	8	25	10		51					
Couchwood Ct., Butterfield	17	7	64	7				43	37	337		1	5	8	26	72	49		105					
Magnet Cove	1	1	68	1				62	30	68		1	20	8	53	17	79		236					
Morning Star	1	1	97	6				102	37	97		1	6		18	20	40		84					
Rockport	4	6	87	6				86	34	87		1	5		20	50	40		116					
Total	4	14	316	14	5	1		328	103	316		1	22		50	50	40		116					
Dalark Ct., Bethlehem	4	4	87	16				187	139	86		1	5		20	20	40		116					
Dalark			87	16				187	139	86		1	5		20	20	40		116					
Manchester	7	17	117	1	4	1		75	28	113		1	6		20	50	40		116					
Manning	3	5	102	1	4	1		60	59	103		1	7	10	82	118	115		337					
Rock Springs	3	2	91	5	6			85	35	109		1	9	6	7	10	25		86					
Total	10	41	387	20	22	3	2	255	12	32		1	5	5	15	26	35		87					
Fountain Lake	7	7	60	2	3			63	38	63		1	5	5	3	5	12		30					
Friendship Ct., Bismarck	4	4	30	7	3			40	172	437		5	35	34	44	78	110		31					
Christian Home	3	3	40	5	2	1		27	40	40		1	8	3	18	34	16		301					
Friendship	2	2	43	6	2			15	17	44		1	8	4	12	14	20		78					
Leau Fraix	3	3	85	5	2			38	24	49		1	3	3	8	5	14		58					
Midway	5	5	60	5	1	1		31	30	51		1	5	3	10	8	25		33					
	1	1	52	1	1	1		18	34	64		1	6	3	19	30	10		48					
										52		1	6		19	14	10		68					
																			39					

	1	2	3	4	5	6	7	8	9	10	11	12	13	14	15	16	17	18	19	20
Social Hill																				
Total	18	24	1	30	22	8	4	8	11	19	30	2	1	6	2	12	10	10	10	40
Holly Springs Ct., Holly Springs				310	143				185		328			34	12	70	81	89		286
Mt. Carmel	1	6	1	211	32	5	1	2	234	11	245			6	7	16	25	17	17	71
Mt. Olivet				100	6	3		1	108		108			5	4	12	11	35		51
Total	1	6		133	4				136		136			5	6	16	19	35		81
Hot Springs: First Church				444	42	8		4	478	11	489			15	17	47	55	69		203
Grand Ave.	31	38	46	1515	86	118	21	102	1996		1996	2	1	39	30	141	150	319	10	689
Oak Lawn	6	13	16	681	17	36	8	24	392	82	702			29	22	76	81	156	10	374
Pullman Hts.	10	9	15	472	21	23	3	12	392	108	500	2	1	15	5	82	51	115	5	273
Tigert-Jones Mills	6	13	13	363	13	29	3	20	282	100	382			15	10	94	40	112	10	381
Jones Mill				101	13	7			121		121			1	15	30	30	25		107
Total	6	15	2	114	15	11			140		140			12	25	45	50	50		182
Hot Springs Ct., Bethlehem				48	1	1	1		29	20	49			1	4	2	14	17	18	57
Gum Springs				39	1				20	20	40			1	5	11	15	11		36
Mt. Valley				24		1			12	13	25			1	6	8	10	16	20	60
Mt. Pine				87		10		2	59	36	95			1	10	30	32	67		149
New Salem				100		6	1		60	46	106			1	7	4	20	12	20	63
Total	2	8	2	267	3	22	2		180	135	315	1	1	33	29	85	82	136		385
Keith Memorial				167	8	9			124	67	191			1	10	30	40	60	4	184
Leola Ct., Clear Creek				49	1	2		1	66	35	49			1	4	15	15	15		49
Hunter's Chapel				98	5	2		3	151	27	178			1	5	15	18	30		68
Leola				20	1	4	1	8	15	7	51			1	4	6	12	12		34
Rolla				49	2	2		2	44	84	400			3	13	36	45	57		151
Toler's Chapel				394	14	8	3	13	316		400			1	28	101	110	345		649
Total	11	15	36	1045	30	31	4	22	830	250	1080	3	1	28	30	101	110	345	35	
Lonsdale				32					32		32			1	7	8	12	20		49
Malvern				34					34		34			1	7	2				
Martindale				17					17		17									
Pearcy Ct., Friendship				27					28		28			1	6	4	7	22		51
Piney Grove				78	1	1			79		79			2	13	6	15	24	22	100
Total	2			71	2			9	64	8	64			1	5	8	8	25		45
Princeton Ct., Macedonia				40				4	56	13	36			1	5	8	6	8		27
Princeton				40				4	54	25	79			1	3	3	3	8		20
Providence	1			82		1	2	2	62	24	86			1	4	12	10	12		38
Waverly	4	11		49	11		1	14	35	15	35			4	4	4	2	4		14
Zion				77					20		20			1	4					
Total	5	13		319	13	3	3	32	215	85	300			5	21	35	31	57	6	144
Sparkman-Sardis: Sparkman				238	15	20	2	9	184	78	262			1	6	3	12	8	57	117
Sardis				4	165	5	9	7	122	50	172			1	10	3	14	25	14	74
Total	8	8	9	403	20	29	2	16	306	128	434			2	16	9	42	82	20	191
Traskwood Ct.: Congo				101	7			1	88	15	103			1	6	15	9	15	30	75
Ebenezer				123				1	121	22	121			1	5	6	4	10	20	45
New Hope				121	1	4	1		103	22	125			1	6	21	24	51	44	146
Point View				30					31		31			1	5	7	9	18		39
Traskwood				122	8				127		127			1	7	11	22	22		68
Total	12	4		497	17	4	1	7	470	37	507			5	28	49	55	107	134	373
Total (or Carried Forward)	124	348	142	10891	493	476	81	470	9411	1898	11309	13	61	519	370	1470	1582	2679	116	8736
Total Last Year	76	249	67	10522	313	332	61	139	9267	1646	10907	12	82	519	338	1416	1479	2228	140	6120
Increase	48	99	75	369	180	144	20	271	144	258	402	1	1			32	54	451	24	616
Decrease																				

STATISTICAL TABLE NO. 1 (Cont.)—MEMBERSHIP, CHURCH SCHOOL STATISTICS, WOMAN'S WORK, AND CHURCH PROPERTY
 ARKADELPHIA DISTRICT

CHARGE AND CHURCH	CHURCH SCHOOL STATISTICS (Continued)												W. S. OF C. S.					CHURCH PROPERTY				
	Average Attendance at Sunday School	Average Attendance Children	Average Attendance Additional Meets—	Average Attendance Youth Fellowship	Average Attendance Additional Meets—	Average Attendance Adults	Methodist Pupils in Vacation Schools	Methodist Pupils in Weekday Schools	Pupils Joining the Church on Prof. of Faith	No. Enrolled in Schools & Classes	Ch. Sch. Offering and World Services and Conf. Benev.	Total Amt. Raised for Ch. School for All Purposes	Number of Units of Organization	Membership, Woman's Society of Christian Service	Paid for Local Work	Membership, Wesleyan Service Guild	Number of Preaching Places	Estimated Value of Church Buildings, Equipment, Land	Estimated Value of Parsonages, Furniture, Land	Estimated Value of Other Property	Indebted, on Bldgs. Equip., Parson, & Current Expenses	
Arkadelphia	225								13	23			5	126	379	22	1	75000	10000			40
Arkadelphia Ct., Hollywood	60						85		7			80					1	1500	3000			
Mt. Zion	40								1			25					1	800				
Hart's Chapel	25											50	1	10			1	800				
Mt. Pisgah	20											30	1	8			1	600				
New Hope																						
Smyrna	30								11			50	1	12			1	800				
Total	175								19			235	3	30			5	4500	3000			
Benton	207						100		31			1000	1	94	99		1	50000	5000			
Benton Ct., Pleasant Hill	40								1			40					1	500				
Oak Hill																	1	500				
Paron																	1	500				
Smyrna	35																1	500				
Total	75								1			30					1	500				
Carthage-Tulip: Carthage	50						45		5			48	1	19			4	2000				
Mt. Zion																	1	1500	2000	350		
Tulip	30						8		9			25					1	2500				
Willow	85						15		1			22					1	500				
Total	165						35		15			98	1	19			4	4500	2000	350		
Couchwood Ct.: Butterfield	32																1	1500				
Magnet Cove	40																1	2000				
Morning Star	70																1	7500	5000			
Rockport	65																1	2000				
Total	207												1	15			4	8000				
Dalark Ct., Bethlehem	60																1	1500				
Dalark	32																1	2000				
Manchester	75																1	4500				
Manning	15																1	2000				
Rock Springs	15																1	6000	5000			
Total	197												1	15			5	7500				
Fountain Lake	40						42		3			100	4	35			1	2000	3000			
Friendship Ct., Bismarck	45											48					5	18500				
Christian Home	20						23		2			1545	1	18	1112		1	10000				
Friendship	30											75					1	1350				
Leau Frals	45						23					40	1	12	75		1	1000	1000			
Midway	25								4			40					1	600				
Social Hill	25										20	40					1	1000				
	25											40					1	800				

	21	22	23	24	25	26	27	29	30	31	32	33	34	35	36	37	38	39	40
Total	190				46		8		55	255	1	12	75		6	5700	1000		
Holly Springs Ct.: Holly Spgs.	66									70	1	17			1	2500	1000		
Mt. Carmel	48	25								65	1				1	1500			
Mt. Olivet	70									75					3	1500			
Total	183	25	25							210	1	17			1	5500	1000		
Hot Springs: First Church	395	30	20	50	71		15	32	200	4906	8	250	1225	39	1	150000	15000	8500	10000
Grand Ave.	137	20	20		32		13			236	2	68	923	16	1	45000	3500	6500	4050
Oak Lawn	137	20	20		43		4	4	4	274	2	31			1	20000	6000		350
Fullman Hts.	140	72			40		4	10		3497	2	44	308		1	30000	5000		
Tigert-Jones Mills	75				65		13			250	1	20	50		1	5500			
Jones Mills	50				72		2			65	1	20	50		2	5500			
Total	125				137		15			315					1	1200			
Hot Springs Ct., Bethlehem	30									35					1	1200			
Gun Springs	25									25					1				
Mt. Valley	25	10					1			20					1				
Mt. Pine	85	60								435	1	10			1	1500			
New Salem	35	15					1			170	1	15			5	3900		1000	
Total	200	55	55	15	65		6			683	2	25			1	5000	2500		
Keith Memorial	95	10								2972	1	26	174		1	800			
Leola Ct., Clear Creek	30						3			25	1	15			1	1250	1800		
Hunter's Chapel	35						3			30	1				1	3500			
Leola	22						2			400					1	1000			
Rolla	22						2			20	1	15			5	6950	1800		
Toller's Chapel	87						8			75									
Total	245	26			75		19	40	254	592	4	137		22	1	50000	3750	3000	
Lonsdale																			
Malvern	23																		
Martindale	40																		
Pearcy Ct., Friendship																			
Pearcy	40																		
Piney Grove	80																		
Total	12						2		22	46					3	2450	800		
Princeton Ct., Macedonia	15								10	45					1	2500			
Princeton	7									3					1	900	1700	3500	
Providence	15						9			11					1	1000			
Waverly	8									5					1	1200			
Zion	57						11		32	110					5	8100	1700	3500	
Total	66				38		3	26			1	29	165		1	10000	3600		
Sparkman-Sardis: Sparkman	38				19		1	11		80	1	12	21		1	6000			
Sardis	104	8	8		57		4	37		196	2	41	186		2	16000	3600		
Total	80						5			500					1	2000			
Traskwood Ct.: Congo	85									555					1	2000			
Ebenezer	85									65					1	800	1000		
New Hope	75									490					5	8800	1000		
Point View	80									1806									
Traskwood	385						5												
Total	3904	81	384	126	838		196	146	689	21110	42	1023	4532	99	67	535400	71650	22850	14400
Total (or Carried Forward)	3176	66	352	98	504	4	150	102	908	11690	19	850	3745	101	71	551000	63050	7100	4750
Total Last Year										9420	23	173	787				8600	15750	9650
Increase	728	15	32	28	334		16	44						2	4	15600			
Decrease						4			219										

STATISTICAL TABLE NO. 1—MEMBERSHIP, CHURCH SCHOOL STATISTICS, WOMAN'S WORK, AND CHURCH PROPERTY
CAMDEN DISTRICT

CHARGE AND CHURCH	MEMBERSHIP										CHURCH SCHOOL STATISTICS										
	Infants Presented for Baptism by Parents or Guar.	All Others Youth, Adults	Baptized Children Now on Prepara-tory Roll	Total Full Member-ship Reported Last Yr-Active, Inactive	Recd. from Prep. Membership and Inactive	Profession of Faith	Received by Transfer and Reinstated	Removed by Death	Removed by Transfer and Otherwise	Total Full Members—Active	Total Full Members—Inactive	Total Active and Inactive	Total Local Preachers	Number of Church Schools on Charge	Officers and Teachers	Enrolled in Nursery Dept. Birth to 3 Years	Enrolled in Children's Division 4-11 Years	Youth Enrolled in 12-23 Years	Enrolled in Adult Division Exc. of Home Dept.	Enrolled in Home Department	Total Enrollment
Bearden	1	20		275	20	30	15	177	130	307				1	12	10	98	50	62	12	20
Camden-Fairview: Fairview	3	29		411	29	43	12	416	54	470				1	16	27	120	75	98	26	244
Lester				28				28		28											362
Oak Grove				28				28		28											
Total	3	29		467	29	43	12	472	54	526				1	16	27	120	75	98	26	362
Camden: First Church	13	19		1414	49	114	9	101	218	1467				1	64	38	186	158	261	20	727
Two Bayou				17						17											
Chidester Ct.: Chidester	1			270	17	11	2	23	143	273				1	12	11	41	26	56		146
Missouri	3			107	2			1	42	107				1	6	9	13	18	22		68
Red Hill				75			3	25	46	71											
Silver Springs				109				55	57	112											
Total	4			581	29	30	4	295	301	596				3	24	30	64	65	96		279
Rock Hill				20	7	19	13	20	13	33				1	6	10	10	21	18		65
El Dorado Ct.: Centennial	4	27		179	27	6	9	149	53	202				1	7	20	18	18	61		279
Dumas	1	5		85	6	7		87	11	98						15	22	22	26		70
Hi Bank		1		36	1			30	6	36											
Lisbon		2		101				90	13	103				1	7		16	26	24		73
Total	5	37		401	36	12	9	356	83	439				3	21	51	66	66	66		204
El Dorado: First Church	23	15		2192	49	94	15	105	456	2145			1	110	110	102	269	226	586	29	1332
Vantrouse	6	5		417	20	23	6	207	155	434				1	11	24	44	24	94		197
Bethel				60	6	1	3	37	26	63				1	4	22	20	7	5		38
Wesley	1			61	4	24	8	40	24	64				1	4	19	28	20	6		49
Total	7	6		538	30	24	23	356	205	561				1	19	24	85	51	105		284
Emerson Ct.: Atlanta	1			92				64	31	95				1	6	12	17	17	13		35
Christie's Chapel	1			166	1	11	4	99	74	173				1	5	9	11	14	18		46
Emerson				56		7		57		57				1	4						
Ware's Chapel		6		161	6			100	67	167				1	4		6	8	9		35
Total	1	11		475	11	18	4	320	172	492				1	19	27	38	46	40		143
Fordyce	9	28		552	37	73	5	557	67	624			2	1	30	7	111	80	246		474
Hampton-Harrell: Calion				123		2		59	64	123				1	8		10	15	20		53
Faustina				92				59	36	95				1	5		8	15	15		43
Hampton				212	9	8		149	69	218				1	8		25	25	25		83
Harrell	1			148				71	71	147				1	6		10	12	25		53
Total	11	11		575	16	11	4	343	240	583				4	27	53	67	85	85		232
Harmony Grove Ct.: Buena Vista	1	11		100	16	2	1	91	26	117				1	6	12	15	15	21		54
Harmony Grove	1	9		134	15	13	2	100	60	160				1	7	28	32	32	23		90
Lakeside		5		79		1		47	39	86				1	5		12	6	10		32
Total	1	25		313	38	16	3	238	125	363				3	18	52	53	53	54		277
Huttig				190		2		93	91	184				1	12	4	51	18	31		177
Bolding				120		4		57	59	116				1	16		20	20	20		116
Total				310	4	15	2	150	150	300				2	18	4	71	38	51		66
Junction City Ct.: Beech Grove	2			91	2			92		92											182

	1	2	3	4	5	6	7	8	9	10	11	12	13	14	15	16	17	18	19	20
Blanchard				74				4	71		248	71	1							125
Junction City				248	8	14	3	13	4		68	231	1							126
Olive Branch				68			1	1	6		231	710	1							118
Pleasant Grove				200	27	11	6	23	710		710		2							269
Total		15	21	675	37	27				8		43								44
Kingsland Ct.: Camp Springs				44			1													
Cross Roads																				
Draughn				56	2		4	4	2	4		54								118
Grace				312	2	4	4	4	16	112	87	199								162
Kingsland				76	12		5			86	48	109								31
Total		5	5	119	3	12				135	49	135								55
Louann Ct.: Liberty				121	9					175	337	337								147
Louann				316	24	17			15	175	337	337								506
Silver Hill				941	44	83	8		20	162	110	1023								136
Total		3	11	201	17	17			37	913	58	272								65
Magnolia: First Church				115	4				14	214	114	194								299
Jackson St.				193	10				5	99	73	580								47
Lydesdale				509	31	69			10	121	114	194								72
Village				81	4	2			29	434	146	85								24
Total		22	31	244	4	2			4	246	44	246								65
Marysville Ct.: Bethel				43	1					44	161	161								208
Ebenezer				157	4				5	161	536	536								100
Friendship				525	11				5	536	574	574								45
Marysville				75					1	39	35	132								145
Total		9	9	282	10				1	36	288	288								44
Norphet				433	11				8	47	56	428								158
Total		3	10	479	11				35	69	101	350								202
Parker's Chapel				323	17				5	259	91	429								
Strong Ct.: Fredonia				402	18				5	323	101	429								
Parker's Chapel				60					30	325	520	845								354
Total		16	18	777	21				4	48	92	75								44
Barge Chapel				53	6				9	48	44	92								47
Smackover				94	23				17	47	141	388								173
Stephens Ct.: McNeal				367	37				2	243	310	388								264
Mt. Prospect				514	37				2	266	343	555								46
Stephens				106	1				8	10	40	136								92
Total		7	12	140	10				2	15	96	94								57
Strong Ct.: Rhodes Chapel				182	1				1	12	77	171								195
Strong				428	12				3	35	243	407								38
Union				64	4				2	65	28	28								
Total		9	9	26	6				4	28	74	74								35
Thornton Ct.: Chambersville				74					1	74	124	291								81
Stony Point				111	15				5	124	291	291								10
Temperance Hill				375	26				11	398	398	398								154
Thornton				356	34				15	304	372	470								27
Total		6	19	73	20				8	33	39	470								279
Waldo				439	34				1	337	40	98								56
Kilgore				64					4	23	40	98								
Total		7	28	57	6				1	57	37	57								
Columbia Ct.: Green				63						20	34	63								56
New Era				184						29	34	63								
New Hope				338	420					41	98	15665								7870
Wingfield				142	14561	622				57	37	281								6993
Total		120	381	88	14830	682				20	34	14830								877
Total (or Carried Forward)		125	330	142	14561	622	539	14	223	613	222	835	2							52

STATISTICAL TABLE NO. 1 (Cont.)—MEMBERSHIP, CHURCH SCHOOL STATISTICS, WOMAN'S WORK, AND CHURCH PROPERTY
CAMDEN DISTRICT

CHARGE AND CHURCH	CHURCH SCHOOL STATISTICS (Continued)										W. S. OF C. S.					CHURCH PROPERTY				
	Average Attendance at Sunday School	Average Attend. Additional Meets—Children	Average Attend. Youth Fellowship	Average Attend. Additional Meets—Adults	Methodist Pupils in Vacation Schools	Methodist Pupils in Weekday Schools	Pupils Joining the Church on Prof. of Faith	No. Enrolled in Accred. Leadership Schools & Classes	Ch. Schol. Offering and World Services and Conf. Benev.	Total Amt. Raised by Ch. School for All Purposes	Number of Units of Organization	Membership, Woman's Society of Christian Service	Paid for Local Work	Membership, Wesleyan Service Guild	Number of Preaching Places	Estimated Value of Church Buildings, Equipment, Land	Estimated Value of Parsonages, Furniture, Land	Estimated Value of Other Property	Indebted on Bldgs. Equip., Parson. & Other	
Bearden	75	10	15	10	75	12	14	27		79	2	48	503		1	25000	35000		40	
Camden-Fairview: Fairview	170	35			67						3	55	849		1	20000	6000		6500	
Lester															1	1000				
Oak Grove															1	1000				
Total	170	35			67						3	55	849		2	22000	6000		6500	
Camden: First Church	300				160						7	248	80		1	100000	5500			
Two Bayou															1	2000				
Chidester Ct.: Chidester	75	25			65						1	34	222		1	10000	3500			
Missouri	35														1	800				
Red Hill															1	1800				
Silver Springs															1	500				
Total	151	25			65						1	34	222		1	13900	3500			
Rock Hill	41														1	800				
El Dorado Ct.: Centennial	36	12	15	7											1	3000				
Dumas	62	10	14	6											1	7000				
Hi Bank															1	1000				
Lisbon	60	15	12	6											1	1000				
Total	158	37	41	19	175						11	278	1137		4	16000	10000	36478		
El Dorado: First Church	495		35	150	27						4	71	201		1	43000	4000			
Vantrease	82		7												1	2600				
Bethel	25														1	6000				
Wesley															1	2000				
Total	135	7			27						4	71	201		3	51600	4000			
Emerson Ct.: Atlanta	25	12													1	2000				
Christie's Chapel	25	8	7	15	18										1	1200				
Emerson	23	6			12						1				1	1200				
Ware's Chapel	25														1	1500				
Total	98	8	25	15	30						1				4	5900	8104			
Fordyce	262	17	10		61						1	75	300		4	100000				
Hampton-Harrell: Calton	30										1	10			1	4500				
Faustina	20														1	2000				
Hampton	50	10													1	4000				
Harrell	30														1	1000				
Total	130	20									1	15			1	3000	3000		175	
Harmony Grove Ct.: Buena Vista	45										3	37			1	1500				
Harmony Grove	65	25													1	4000				
Lakeside	30														1	1500				
Total	140	25													1	6500	3000		175	
Huttig	50	18													1	1000				
Bolding	40														1	1000				
Total	90	18									1	14	229		2	11500				
Junction City Ct.: Beech Grove															1	1000				

	21	22	23	24	25	26	27	28	29	30	31	32	33	34	35	36	37	38	39	40
Blanchard	52	10	11		28				1	15	52	564	1	17			1	400		
Junction City	15																10000	2500		
Olive Branch	55	12	20						14	8	65		1	20			1100			
Pleasant Grove	122	22	31		28				15	23	52	629	2	37			15000	2500		
Total																	800			
Kingsland Ct.: Camp Springs	24																1630			
Cross Roads																	500			
Draughn																	2000			
Grace	50		8		33				1	17	30		1	15	30		3500	1500		
Kingsland	74		8		33				3	17	30		1	15	30		8400	1500		
Total	20											24					1200			
Louann Ct.: Liberty	20											45	1	14			3000			
Louann	20											45	1	14			1000			
Silver Hill	64											149	1	14	305		5200	1200		
Total	275								7			803	5	132	424	16	45000	10000		
Magnolia: First Church	30	10	60		85				16	36		423	2	40	91	6	51000	5000		
Jackson St.	34	7	5		22				2	13		106					18000			
Lydesdale	51	13	20		38				4	38		290	1	18	22		35000		1800	
Village	155	50	38		124				14	71		819	3	58	113	6	56300	5000	1800	
Total	28				10				1			31	1	29			3000			
Marysville Ct.: Bethel	30		15						1			46	1	17			3000	3000		
Ebenezer	12								1			24	1	20			3000	3000		
Friendship	35		25		22				3	2		101	3	66			3000	3000		
Marysville	105		40		32												1200	6000		
Total																	1500			
Norpiet Ct.: Ebenezer	55				55				9				1	18	30		17000			
Norpiet	30								1				1	18	30		1500			
Quinn	85				55				10			294	1	18	30		10000	2500		
Total	32				11							584	1	12	16		5000	6000		
Parker's Chapel: Fredonia	78		41						24								10000			
Parker's Chapel	110		41		11				24								10000			
Total																				
Barge Chapel	167	18	20		84				14	30	60	382	4	106	358		30000	6000	1000	
Smackover	22				23				5			90	1	11			3000			
Stephens Ct.: McNeal	22								1			60					3000			
Mt. Prospect	103	6	14						9			3000	1	75			25000	7000	2000	
Stephens	147	6	14		23				15			3150	2	86			30000	7000	2000	
Total	32											600					2500			
Strong Ct.: Rhodes Chapel	50		15						8		24	700	1	22	70		3000	3000	100	
Strong	30		15						1			200	1	12	25		1000			
Union	112		30						10		24	1200	2	34	95		13500	3000	100	
Total	28								3			24					2000			
Thornton Ct.: Chambersville																	1			
Stony Point	22								1			23					1000			
Temperance Hill	52				35				9			53	1	12			2500	2000		
Thornton	102				35				13			100	1	12			6300	2000		
Total	120		12	75	53				19	26		1040	2	58	500		25000	4500		
Waldo	18				12				12			28					1500			
Kilgore	138								19	26		1066	2	58	500		26500	4500		
Total					65												800			
Columbia Ct.: Green									6			12					1200			
New Era	42																1200			
New Hope																	1200			
Wingfield																	1200			
Total	42								6			12				4	4400			
Total (or Carried Forward)	3902	161	557	351	1235	30	362	283	595	15334		65	1508	5554	148	72	780200	132304	41378	6675
Total Last Year	3293	175	572	254	1081	136	306	285	1381	18189		35	1469	6472	156	74	690150	79500	40400	
Increase	609											30	39				90050	52804	978	6675
Decrease		14	15			106	56	48	786	2855						2				

STATISTICAL TABLE NO. 1—MEMBERSHIP, CHURCH SCHOOL STATISTICS, WOMAN'S WORK, AND CHURCH PROPERTY
LITTLE ROCK DISTRICT

CHARGE AND CHURCH	MEMBERSHIP										CHURCH SCHOOL STATISTICS									
	Infants Presented for Baptism by Parents or Guar.	Baptized Children Now on Prepara-tory Roll	Total Full Member-ship Reported Last Yr-Active, Inactive	Rec'd from Prep. Membership and Profession of Faith	Received by Transfer and Reinstated	Removed by Death	Removed by Transfer and Otherwise	Total Full Members—Active	Total Full Members—Inactive	Total Full Members—Active and Inactive	Total Local Preachers	Number of Church Schools on Charge	Officers and Teachers	Enrolled in Nursery Dept. Birth to 3 Years	Children's Division 4-11 Years	Youth Division—12-23 Years	Enrolled in Adult Division Excc. of Home Dept.	Enrolled in Home Department	Total Enrollment	
Austin Ct.:Concord	10	3	4	5	6	7	8	9	10	11	12	13	14	15	16	17	18	19	20	
Mt. Tabor			268	19	1	3	6	179	100	279		1	7	12	37	54	35	12	157	
Mt. Zion	6		95	6	2		7	53	43	96		1	6	1	22	15	44		94	
Old Austin	4		31	4		1	22	22	42	137		1	6	1	12	24	35	2	94	
Smyrna	2		95	2			2	61	34	95		1	4	3	9	17			33	
South Bend	15		81	23			1	77	26	103		1	4		15	18			49	
Total	37		699	55	3	4	19	477	257	734		6	34	22	112	130	180	14	502	
Bauxite	3	14	370	24	18	2	10	285	115	400		1	20	20	30	30	66	7	250	
Sardis	3	3	267	6	4	1	6	219	51	270		1	12	20	33	30	66	7	168	
Total	6	17	637	30	22	3	16	504	166	670		2	32	50	123	60	146	4	418	
Bryant Ct., Bryant	2	4	147	5	2	1	2	147	4	151		1	9	3	43	57	52	4	188	
Mt. Carmel			73		4	2	2	73		73		1	8	3	11	33	37	2	93	
Salem		1	171	1	4		1	166	9	175		1	9	3	45	43	47	5	152	
Total	2	5	391	6	10	3	5	386	13	399		3	26	8	59	133	136	11	413	
Carlisle	6	19	521	34	36	5	40	434	112	546		1	19	20	53	82	155	35	364	
Carlisle Ct. Hamilton	2	5	169	7	8	1	24	102	57	159	1	1	6	3	11	21	7		45	
Rodger's Chapel		1	141	2			57	66	20	86		1	3		6				21	
Shiloh		2	55	3	26		4	38	42	80		1	5		6	7	5		21	
Walter's Chapel	6	2	84	6		3	6	51	24	75		1	5		6	11	6		28	
Zion		6	89	7		3	42	50	4	54		3	14		23	39	18		94	
Total	8	14	538	19	34	4	133	307	147	454	1	3	13	11	36	40	30		130	
Des Arc-New Bethel: Des Arc			327	4	7		4	291	43	334		1	13							
Abington		2	327	4				38	38	38										
New Bethel		5																		
Total	1	3	87	3	3		4	77	16	93			6	5	12	15	12		50	
DeValls Blf—Chenault: Chen.	1	5	452	7	10		4	406	59	465		1	19	16	48	55	42		180	
Pepper's Lake			22				12	10	10	10		2	4	3	14	14	7		38	
DeValls Bluff								28	10	28		1	4	6	5	10	16		25	
Total	2	3	109		28	1	1	110	110	110		3	14	6	21	18	10		62	
Douglasville		2	131		31	1	13	148	148	148		1	7	6	40	42	33		135	
Geyer Springs	3	9	189	40	16	2	70	118	55	173		1	18	18	60	85	42	10	233	
Total	2	10	332	56	26	2	72	230	130	360		2	28	26	80	115	88		114	
England	5	19	352	33	33		250	291	51	342		2	24	22	45	37	68	10	347	
Hazen	8	9	367	16	20	3	4	345	51	396		1	15	10	38	42	55	11	237	
Hickory Plains Ct., Bethlehem	4	16	203	6	3	1	4	202	5	207		1	7	10	15	23	35		171	
Cross Roads		4	85	4	2		3	85	3	88		1	6	2	12	30	25		90	